



PROGRAM BOOK WINTER 2016

1 3 7 T H S E A S O N

150



UNIVERSITY OF MICHIGAN | ANN ARBOR



U M S . O R G

U M S L O B B Y . O R G

U M S R E W I N D . O R G

U M S L O B B Y



Did you like it? Did it move you? Did it change you?
Did it disappoint? Tell us what you think at umslobby.org
or any of our social media spaces.

Be Present

UMS unleashes the power of the performing arts in order to engage, educate, transform, and connect individuals with uncommon experiences. The Winter 2016 season is full of exceptional, world-class, and truly inspiring performances.

Welcome to the UMS experience. We're glad you're present.
Enjoy the performance.





When you attend a UMS performance,
you're part of a larger equation:

nonprofit **ARTS**
+ **CULTURE**
= **ECONOMIC**
PROSPERITY
in the greater Ann Arbor Area
\$100 million annually

Together, we invest in our local community's vibrancy.



Ann Arbor Area
Community Foundation

aaacf.org



Welcome to this UMS performance. We're delighted that you're joining us in our 137th season, one of the most exciting, diverse, and engaging in our history. In addition to what you'll see on stage, UMS has a robust education program serving people of all ages and also oversees the 175-voice Grammy Award-winning UMS Choral Union. We invite you to learn more about all of our programs at ums.org and to become engaged with UMS, whether it's by making a gift to our campaign, joining us at the Ann Arbor Y for a community dance class with a visiting dance company, or buying a ticket to a performance. We're always eager to hear from you, too! Join the conversation and share your thoughts after a performance at umslobby.org. If you have any comments, questions, or concerns, please be in touch with UMS President Ken Fischer at 734.647.1174 or at kenfisch@umich.edu. We hope to see you again soon.



**MARK
SCHLISSSEL**

*President,
University of Michigan*



**KENNETH C.
FISCHER**

UMS President



**STEPHEN R.
FORREST**

*Chair,
UMS Board of Directors*

For those who leave Michigan, but for whom Michigan never leaves.



This is where you belong. Join today at umalumni.com



To reveal the age
you feel,
stay on
your toes.

Table of Contents

7	Winter 2016 Season Calendar
8	Education
11	History
12	Leadership Donors
14	Corporate Champions
20	Foundation, Government, & University Support
23	People
31	Generous Donors
40	Ad Index



CENTER FOR PLASTIC &
RECONSTRUCTIVE SURGERY

face ♣ body ♣ breast ♣ skin

Paul Izenberg, MD | David Hing, MD

Richard Beil, MD | Daniel Sherick, MD

Rachel Streu, MD

Art and medicine
performing in concert

www.cprs-aa.com | 734.712.2323

Reinhart

ReinhartRealtors.com

Proudly Supports
The University
Musical Society

734-747-7888

Charles Reinhart Company Realtors 

The real estate leader in Ann Arbor for over 40 years



THE ORIGINAL
Cottage Inn

Ann Arbor's Original Pizza Spot. Stop in
after the show with your ticket stub to
receive a free cheesecake appetizer!

512 E. William Ann Arbor MI 48104



Dentistry as a Fine Art

Unparalleled Attention to Detail
We blend creativity and expertise to
create beautiful, natural-looking smiles.

Photography © Kirk Donaldson

Sedation | Implants | Cosmetics | Complex Restoration | Sleep Apnea

 **DONALDSON
& GUENTHER**

734.971.3450

dgdent.com

3100 Eisenhower, Ann Arbor MI 48108

Winter 2016 Season Calendar

JANUARY

1/8

What's in a Song?

A song recital evening
curated by Martin Katz

1/10

Jamie Barton,
mezzo-soprano

1/11

Royal Philharmonic
Orchestra
Pinchas Zukerman,
conductor and violin

1/17

NT Live: Shakespeare's
Hamlet

1/20

Jazz at Lincoln Center
Orchestra with
Wynton Marsalis

1/21-23

Young Jean Lee's
Theater Company
*Untitled Feminist Show &
Straight White Men*

1/22

Chamber Music Society
of Lincoln Center

1/24

NT Live: Charlotte
Brontë's *Jane Eyre*

1/27

Ms. Lisa Fischer and
Grand Baton

FEBRUARY

2/2

Tanya Tagaq in concert
with *Nanook of the North*

2/5

Taylor Mac
*A 24-Decade History
of Popular Music:
1960s-1980s*

2/6

Igor Levit, piano

2/13

Camille A. Brown &
Dancers

2/14

UMS Choral Union and
Organ
Love is Strong as Death
Scott Hanoian, conductor

2/16-20

Sir András Schiff, piano
*The Last Sonatas
of Haydn, Mozart,
Beethoven, and Schubert*

2/19

The Triplets of Belleville
Benoit Charest,
composer-conductor

2/24

NT Live: Christopher
Hampton's *Les Liaisons
Dangereuses*

MARCH

3/5

The Chieftains

3/11-12

Nufonia Must Fall
Kid Koala, DJ, producer,
and graphic novelist

3/15

Apollo's Fire & Apollo's
Singers
Bach's St. John Passion

3/19

Montreal Symphony
Kent Nagano, conductor
Daniil Trifonov, piano

3/26

Gil Shaham, violin
with original films by
David Michalek
Bach Six Solos

3/31-4/3

American Ballet Theatre
The Sleeping Beauty

APRIL

4/1

Mariachi Vargas de
Tecalitlán

4/3

NT Live: Shakespeare's
As You Like It

4/8

Jerusalem String Quartet

4/14

Mnozil Brass

4/15

*Zafir: Musical Winds
from North Africa to
Andalucía*
Simon Shaheen, music
director

4/16

Bavarian Radio Orchestra
Mariss Jansons, conductor
Leonidas Kavakos, violin

4/23

The Bad Plus
Joshua Redman

Education

EDUCATIONAL
EXPERIENCES
FOR
EVERYONE



At UMS, our mission goes beyond performance. We want you to create, to explore, and to experience extraordinary new things. That is why we offer a fascinating lineup of artist Q&As, conversations, workshops, and interactive experiences, each designed to bring you closer to performance and creation, and to expand your comfort zone. If you want to experience something new, different, highly engaging, and eye-opening, we invite you to participate in events inside and outside of the theater.



[UMS.ORG/LEARN](https://ums.org/learn)

UMS Night School: Constructing Identity

Mondays 1/18–2/15, 7–8:30 pm

(U-M Alumni Center, 200 Fletcher St.)

In our ongoing Night School series, UMS explores the dynamic quality of how human and social identities are constructed and explored in this season's artistic program. How do artists' personal identities inform their work? Do audiences' own identities shape what they see on the stage? UMS Night School invites participants to discover the intersections of performance and identity in music, theater, and dance, and to meet others who share a similar interest. The Night School curriculum will include attendance at and discussion of Young Jean Lee's Theater Company's *Untitled Feminist Show & Straight White Men*, Tanya Tagaq, Taylor Mac, and Camille A. Brown & Dancers *Black Girl—Linguistic Play*. These 90-minute classes combine conversation, interactive exercises, and lectures with genre experts to draw you into the themes related to identity and performance. Drop in to just one session, or attend them all. Events are free, and no pre-registration is required.



Taylor Mac by Kevin Yatarola

Monday, 1/18

“Thinking about Identity and Performance”

(Young Jean Lee's Theater Company)

Monday, 1/25

“Acting and Dancing Identity”

(Young Jean Lee's Theater Company, Tanya Tagaq, Taylor Mac)

Monday, 2/1

“Constructing Identity Onstage: An Interview with Taylor Mac and Tanya Tagaq”

(Tanya Tagaq, Taylor Mac)

Monday, 2/8

“Constructing Identity Together: Artists and Audiences”

(Camille A. Brown & Dancers)

Monday, 2/15

“Reflection & Graduation”



Bravo!

The law firm of Dykema
applauds the University
Musical Society for bringing
the spirit of harmony to our
community with one sound
performance after another.

Delivering exceptional
service to individuals and
businesses since 1926.

DYKEMA

www.dykema.com



**See, touch and smell the
Green Earth difference.
Non-toxic**

An environmentally friendly new
way of dry cleaning.



2268 S. Main St.

Located by Busch's on the corner of
S. Main St. and Ann Arbor-Saline Rd.

734-998-1245

www.irisdrycleaners.com

Daniil Trifonov, 2014, Gilmore Keyboard Festival © Chris McGuire



Pedal to the metal.

GILMORE KEYBOARD FESTIVAL



APRIL 29 TO MAY 14, 2016
THEGILMORE.ORG

Tradition Builds the Future



In our 137th season, we continue to showcase traditional performances alongside contemporary artists for an offering that is unlike anything available in the Midwest. UMS grew from a group of local members of the University and townspeople in the 1870s who gathered together for the study of Handel's *Messiah*. Led by Professor Henry Simmons Frieze and conducted by Professor Calvin Cady, the group assumed the name The Choral Union. Many Choral Union members were also affiliated with the University, and the University Musical Society was established soon after in December 1880.

Since that first season, UMS has expanded greatly and now presents the very best from a wide spectrum of the performing arts: internationally renowned recitalists and orchestras, dance and chamber ensembles, jazz and global music performers, and contemporary stagework and classical theater. Through educational programming, the commissioning of new works, youth programs, artist residencies, and collaborative projects, we continue to strengthen our reputation for artistic distinction and innovation.

Photo: Hill Auditorium in 1928.

Leadership Donors

We recognize the donors who have made or completed multi-year campaign commitments of \$100,000 or more during the last year. In addition, we recognize the individuals who have committed \$50,000 or more in support of the 2015–16 season.



**BERTRAM ASKWITH (1911–2015)
PATTI ASKWITH KENNER**

“The arts have made a significant difference in my life and my daughter’s life. I want every U-M student to have the opportunity to experience the impact of the performing arts at UMS. This is why I am offering every first and second year student one free ticket – Bert’s Ticket – to introduce them to a cultural experience at Michigan.”



EMILY BANDERA

“One of the delights of living in Ann Arbor is the opportunity to attend the many and varied programs brought to us by UMS. We don’t need to travel world-wide to experience these ‘big city’ events. I feel honored to help make this possible.”



DALLAS AND SHARON DORT

“It could almost be said that we chose to move to Ann Arbor post-career because of UMS. Who wouldn’t want to live in a city that can attract such talent, and fill a 3,500-seat hall with so many enthusiastic audiences? Now, we enjoy each season all the more because, as donors, we’re an active part of UMS. What a privilege!”



STEVE AND ROS FORREST

“As students, we benefited from low-cost student tickets, fostering a lifelong love of the performing arts. Our donation will help to ensure that affordable tickets will be available to today’s students.”



ILENE FORSYTH

"I want to help chamber music flourish in Ann Arbor. My support for the series began with its inception in 1963 and I continue to believe that these concerts help nurture our intellectual life as they stimulate and refresh us."



MAXINE AND STUART FRANKEL

"We are delighted to partner with UMS for the fifth year of the Renegade Series. Supporting Renegade programming allows UMS to provide experiences for the curious, adventurous, and experimental audience member — allowing us to challenge our existing beliefs and push our own boundaries."



EUGENE AND EMILY GRANT

"We are proud to support UMS and the many programs they offer University students. It is great to know that students will have access to the greatest performing artists from around the world. The arts are an important part of a Michigan education."



RICHARD AND SUSAN GUTOW

"We enjoy classical and contemporary music, theater, and dance, and feel privileged to add our endowment to that of others to help ensure that UMS continues to present adventuresome performances to the university and Southeast Michigan communities."



PHIL AND KATHY POWER

"Thousands and thousands of lives have been made richer and more profoundly aware through the music, theater, and dance offerings of UMS. It's hard to imagine another institution that has had such an enormous impact on so many over such a long time. UMS's work is enormously valuable and deserves generous support from anybody who believes in the liberating power of the performing arts."

Corporate Champions

We thank the following businesses for their commitments of \$5,000 or more for the 2015–16 season.



ALICIA M. TORRES

Senior Vice President & Chief Financial Officer, Altarum Institute

“The Arts stimulate the mind and inspire creativity. Hence, we at Altarum are thrilled to support UMS and provide inspiring and enjoyable cultural opportunities for our team and our community. Altarum Institute serves the public good by solving complex systems problems to improve human health through objective research, technology, analysis, and consulting leadership skills.”



DOUGLASS R. FOX

President, Ann Arbor Automotive

“We at Ann Arbor Automotive are pleased to support the artistic variety and program excellence given to us by UMS.”



TIMOTHY G. MARSHALL

President and CEO, Bank of Ann Arbor

“We take seriously our role as a community bank. While there have been sizable cuts in arts funding over the years by both the private and public sectors, Bank of Ann Arbor is delighted to continue to sponsor UMS year after year. We are firm believers that the arts are vital to the vibrancy of our cities, both culturally and economically.”



LARRY BRYANT

Ann Arbor Region President, Comerica Bank

“As a company with a long-standing commitment to diversity and our community, Comerica is proud to continue its support of UMS. We salute UMS on its efforts to enrich our community by showcasing the talents of performing artists from around the world. Congratulations to the leader and best in the performing arts.”





CHRIS CONLIN

President, Conlin Travel, Inc.

“Conlin Travel has been a proud supporter of UMS for over 50 years. I will never forget attending one of my first UMS concerts in 1975, listening to Vladimir Horowitz perform Chopin, Rachmaninoff, Schumann, and others. UMS makes Ann Arbor the most vibrant cultural community in Michigan today.”



FAYE ALEXANDER NELSON

President, DTE Energy Foundation

“The DTE Energy Foundation is pleased to support exemplary organizations like UMS that inspire the soul, instruct the mind, and enrich the community.”



NANCY AND RANDALL FABER

Founders, Faber Piano Institute

“We are proud to support UMS in its tradition of program excellence and outreach that enriches our thoughts, our families, and our community.”



JAMES G. VELLA

President, Ford Motor Company Fund

“Experiencing the world through music and the arts makes us better as individuals while bringing us together as a community. We are proud to support UMS and the important role it plays in enriching our lives.”



Ford Motor Company Fund



DAVID N. PARSIGIAN

Ann Arbor Office Managing Partner, Honigman Miller Schwartz and Cohn LLP

“In our firm’s tradition of supporting major cultural institutions, Honigman has been a long-time supporter of UMS. Our Ann Arbor office is proud to carry on that tradition on behalf of all of our attorneys, especially those who work and live in the Ann Arbor area. We all view the exceptional cultural experiences that UMS provides as key to the success of our community and our firm.”





MOHAMAD ISSA

Director, Issa Foundation

“The Issa Foundation is sponsored by the Issa family, which has been established in Ann Arbor for the last 30 years, and is involved in local property management as well as area public schools. The Issa Foundation is devoted to the sharing and acceptance of culture in an effort to change stereotypes and promote peace. UMS has done an outstanding job bringing diverse and talented performers to Ann Arbor.”

ISSA FOUNDATION



KIRK ALBERT

Michigan Market President, KeyBank

“KeyBank remains a committed supporter of the performing arts in Ann Arbor and we commend UMS for bringing another season of great performances to the community. Thank you, UMS, for continuing the tradition.”

KeyBank



MICHAEL CONLIN

Director of Business Development, Level X Talent

“Level X Talent enjoys supporting UMS and its ongoing success bringing world-class artistic talent to the community. Please join us in congratulating UMS. As with the arts, consistently finding and attracting exceptional talent in Advanced Technology can be difficult. Level X Talent partners with our clients to meet that challenge.”

LEVELXTALENT



KEITH ALLMAN

President and Chief Executive Officer, Masco

“Masco is proud to support UMS and salutes its commitment to providing excellent and diverse programs that spark a lifelong passion for creativity. Thank you, UMS, for allowing all of us to experience the transformative power of the performing arts!”

MASCO



ALBERT M. BERRIZ

CEO, McKinley, Inc.

“The success of UMS is based on a commitment to present a diverse mix of quality cultural performances. McKinley is proud to support this tradition of excellence which enhances and strengthens our community.”

www.mckinley.com
LIVE.WORK.SHOP.PLAY.



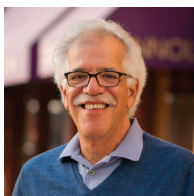
THOMAS B. MCMULLEN

President and CEO, McMullen Properties

“A Michigan–Ohio State football ticket is still the best ticket in all of sport. However, a UMS ticket always provides the best in educational and artistic entertainment.”



FOUR GENERATIONS IN ANN ARBOR REAL ESTATE



DENNIS SERRAS

Owner, Mainstreet Ventures, Inc.

“As restaurant and catering service owners, we consider ourselves fortunate that our business provides so many opportunities for supporting UMS and its continuing success in bringing internationally acclaimed talent to the Ann Arbor community.”



DISTINCTIVE CATERING



STEPHEN G. PALMS

Principal, Miller, Canfield, Paddock and Stone, P.L.C.

“Miller Canfield proudly supports UMS for enhancing our quality of life by bringing the unfiltered immediacy of live performing arts to our community.”



TODD CLARK

Regional President, Old National Bank

“At Old National Bank, we’re committed to community partnership. That’s why, last year alone, we funded over \$5 million in grants and sponsorships and our associates donated almost 100,000 volunteer hours. It’s also the reason we’re pleased to once again support UMS as a corporate sponsor for the 2015–16 season.”



RICHARD L. DEVORE

Detroit and Southeast Michigan Regional President, PNC Bank

“PNC Bank is proud to support the efforts of UMS and the Ann Arbor community.”





BROCK HASTIE

Managing Partner, Retirement Income Solutions, Inc.

“With strong roots in the community for more than 30 years, our team of investment advisors is proud to support UMS. We recognize and appreciate UMS’s successful history and applaud the organization’s ongoing commitment to presenting authentic, world-renowned artists to the Ann Arbor community.”



SAVA LELCAJ

Chief Executive Officer, Savco: Hospitality

“One of Ann Arbor’s greatest assets is UMS, which brings amazing, best-in-class performances to our city season after season. Savco Hospitality is honored to support UMS and its mission of engaging, educating, transforming, and connecting the arts to our community.”



JOE SESI

President, Sesi Lincoln Volvo Mazda

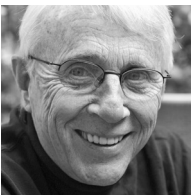
“UMS is an important cultural asset for our community. The Sesi Lincoln Volvo Mazda team is delighted to sponsor such a fine organization.”



JOHN W. STOUT

President, Stout Systems

“Supporting UMS is really a labor of love — love of music and the performing arts and love of arts advocacy and education. Everyone at Stout Systems knows we cannot truly be successful without helping to make our community a better place. It is an honor to be part of the UMS family.”



TOM THOMPSON

Owner, Tom Thompson Flowers

“Judy and I are enthusiastic participants in the UMS family. We appreciate how our lives have been elevated by this relationship.”





OSAMU "SIMON" NAGATA

President, Toyota Motor Engineering & Manufacturing North America, Inc.

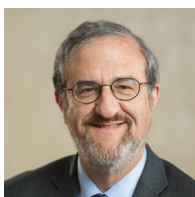
"Toyota Technical Center is proud to support UMS, an organization with a long and rich history of serving diverse audiences through a wide variety of arts programming."



TIFFANY FORD

President, University of Michigan Credit Union

"Thank you to UMS for enriching our lives. The University of Michigan Credit Union is proud to be a part of another great season of performing arts."



MARK SCHLISSEL

President, University of Michigan

"The University of Michigan is proud to support UMS as a natural extension of our academic enterprise. UMS's outstanding performances and educational programs add tremendous value for our students, faculty, alumni, and regional community."



MARSCHALL RUNGE

Executive Vice President for Medical Affairs, University of Michigan, and CEO, University of Michigan Health System

We are proud to partner with UMS for its 2015–16 season. Music improves the quality of life for all of us, and, increasingly, is recognized as an important ingredient for better health."



Foundation, Government, & University Support

UMS gratefully acknowledges the support of the following private foundations, government agencies, and University of Michigan units:

\$500,000 AND ABOVE

The Andrew W. Mellon Foundation



\$20,000 - \$499,000

Anonymous
Charles H. Gershenson Trust



\$5,000 - \$19,999

Benard L. Maas Foundation
The Seattle Foundation
University of Michigan Third Century Initiative



SUPPORTING THE ARTS

As a long-time patron of the arts,
Honigman and its Ann Arbor attorneys
are proud to support UMS.

Fernando Alberdi
Christopher A. Ballard
Maurice S. Binkow
Cynthia M. Bott
Anna M. Budde
Thomas W. Forster II
Carl W. Herstein
Richard D. Hoeg
Ann T. Hollenbeck
J. Michael Huget
Barbara A. Kaye

Tara E. Mahoney
Cyril Moscow
Leonard M. Niehoff
David N. Parsigian
Julie Kretschmer Reitz
Eric J. Sosenko
James E. Stewart
Bea Swedlow
Sara E. Waidelich
Bill Winsten

For more information, please contact
David Parsigian at 734.418.4250 or
DParsigian@honigman.com.

HONIGMAN[®]

WWW.HONIGMAN.COM

Some of the world's most creative minds suffer from one of the most devastating conditions...

Be a source of hope.
Help find a cure for **bipolar disorder**.

What makes a person bipolar, prone to manic highs and depressed lows? We are advancing research on the personalized treatment of this illness that affects close to 6 million Americans.

Make your donation at:
PrechterFund.org/help
1-877-UM-GENES

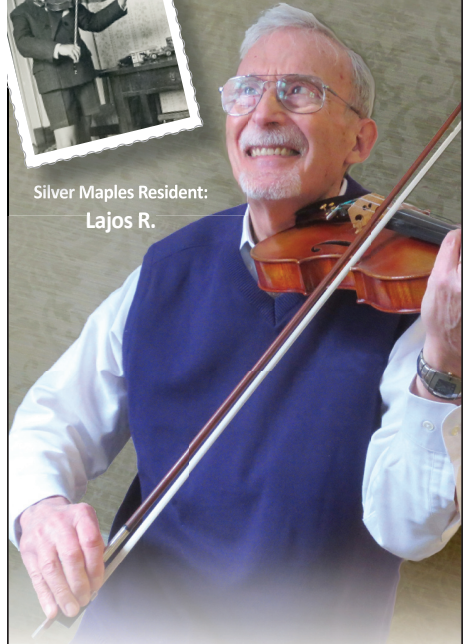


**HEINZ C. PRECHTER
BIPOLAR RESEARCH FUND**
UNIVERSITY OF MICHIGAN



Still Playing

Silver Maples Resident:
Lajos R.



Silver Maples is an active community of interesting and talented individuals, like Lajos, who started playing the violin at age 5 and still enjoys sharing his love of classical music.

Joining our neighborhood opens the door to a new phase of life. From the moment you move in, residents of Silver Maples become friends and family. Come by for a visit and join our VIP wait list.



SILVER MAPLES
of Chelsea

RETIREMENT NEIGHBORHOOD

734.475.4111
SilverMaples.org

Locally-Owned, Non-Profit Jointly Sponsored by
the Chelsea-Area Wellness Foundation and United Methodist
Retirement Communities, Inc.

People

*Those who
work to bring
you UMS
performances
each season*



UMS Board of Directors

The UMS Board of Directors is a group of elected volunteers devoted to the performing arts and to our community. Their hard work ensures that UMS is able to offer outstanding performances year after year.

Stephen R. Forrest
Chair

Sarah Nicoli
Vice Chair

Rachel Bendit
Secretary

Tim Petersen
Treasurer

A. Douglas Rothwell
Chair, Corporate Council

Stephen G. Palms
Past Board Chair

Bruce Tuchman
Chair, National Council

Janet Callaway
David Canter
Mark Clague
Lisa D. Cook
Julia Donovan Darlow
Monique Deschaine
Tiffany L. Ford
Katherine Goldberg
Richard F. Gutow
Stephen Henderson
Daniel Herwitz
Joel Howell
Frank Legacki
Donald L. Morelock
Agnes Moy-Sarns
David Parsigian
Sharon Rothwell
Linh Song
Rick Sperling
Victor J. Strecher
Karen Jones Stutz

EX-OFFICIO

Mark S. Schlissel
President, U-M

Martha E. Pollack
Provost, U-M

Aaron P. Dworkin
*Dean, U-M School of
Music, Theatre & Dance*

Jeanice Kerr Swift
*Ann Arbor Public Schools
Superintendent*

Louise Taylor
Chair, UMS Ambassadors

Photo: Shara Worden performs with My Brightest Diamond at the UMS Season Opening Celebration at Downtown Home & Garden in September; ©2015 MLive and *The Ann Arbor News*. All rights reserved. Used with permission of MLive and *The Ann Arbor News*.



The Triplets of Belleville

Benoît Charest / *Composer-Conductor, Guitar*

Sylvain Chomet / *Film Director*

Thierry Million / *Art Director*

featuring

Le Terrible Orchestre de Belleville

Daniel Thouin / *Keyboards*

Hans Bernhard / *Bass*

Alain Bastien / *Drums*

Bruno Lamarche / *Saxophones*

Aron Doyle / *Trumpet*

Gabriel Gagnon / *Trombone*

Michael Emeneau / *Percussion*

Friday Evening February 19, 2016 at 8:00

Michigan Theater

Ann Arbor

72nd Performance of the 137th Annual Season

22nd Annual Jazz Series

Tonight's performance is supported by the Altarum Institute and by Phyllis and David Herzig.

Endowed support provided by the JazzNet Endowment Fund.

Media partnership provided by Ann Arbor's 107one and WEMU 89.1 FM.

Special thanks to U-M Professor Tiffany Ng for coordinating the pre-concert music on the Charles Baird Carillon.

The Triplets of Belleville appears by arrangement with David Lieberman/Artists' Representatives, Newport Beach, CA.

PROGRAM

This evening's performance is approximately 80 minutes in duration and will be performed without intermission.

THE FILM

It has been more than a decade since the release of the Franco-Quebécois animated movie, *The Triplets of Belleville*. Many still remember this film for its resounding success and incredible soundtrack, which was acclaimed many times at the Oscars, the Genie Awards, and the French Césars.

This much beloved animated film is screened as composer Benoît Charest leads Le Terrible Orchestre de Belleville in the live performance of his original score for the film, including his Academy Award-nominated best song "Belleville rendez-vous." In the spirit of the film, Le Terrible Orchestre de Belleville immediately transports audiences to the exciting streets of 1920's Paris and Le Jazz Hot.

The musical ensemble is made up of eight musicians with wacky instruments, reminiscent of 1930's France. The terrific Belleville Orchestra blends live music and cinema, enticing audiences into their colorful Parisian period cabaret.

THE STORY

Adopted by his near-sighted grandmother, Madame Souza, Champion is a lonely little boy. Noticing that the lad is never happier than on a bicycle, Madame Souza puts him through a rigorous training process. Years go by and Champion becomes worthy of his name. Now he is ready to enter the world-famous cycling race, the Tour de France. However, during this cycling contest, two mysterious, square-shouldered henchmen in black kidnap Champion. Madame Souza and her faithful dog Bruno set out to rescue him.

Their quest takes them across the ocean to a giant megalopolis called Belleville, where a trio of eccentric jazz-era divas, the renowned "Triplets of Belleville," reside. The three music-hall stars decide to take Madame Souza and Bruno under their wing. The motley sleuths follow the clues to an underground speakeasy, where they entertain the crowd. Thanks to Bruno's brilliant sense of smell, the chase is on! But will they succeed in beating the devilish plans of the evil French mafia?

ARTISTS

Sylvain Chomet (*film director*) was born in 1963 in Maisons-Lafitte, France. In 1982, he graduated from high school specializing in art, and in 1987 received a diploma from the prestigious comic-strip studio at Angoulême in France. In 1986, he published his first book-length comic, *Secrets of the Dragonfly* (Futuropolis), and drew an adaptation of a Victor Hugo novel, *Bug-Jargal*, in collaboration with Nicolas de Crécy. Moving to London to work as an animator at the Richard Purdum studio, in 1988 he established a London-based freelance practice, working on commercials for clients such as Swissair, Principality, Swinton, and Renault.

In 1991, Mr. Chomet started work on his first animated film project, *The Old Lady and the Pigeons*, with backgrounds designed by Nicolas de Crécy. In 1992, he wrote the script for a comic entitled *The Bridge in Mud* (Glénat), a science-fiction and historical saga, now in its fourth episode. The following year, he wrote the story *Léon-la-Came*, drawn by Nicolas de Crécy and serialized in *A SUIVRE* magazine. The book version was published by Casterman in 1995. It won the René Goscinny Prize in January 1996.

Since 1993, Mr. Chomet has been based in Canada. He spent 1995 and 1996 finishing his short film *The Old Lady and the Pigeons*. This film won the Cartoon d'Or prize, the Grand Prize at the Annecy Festival, a BAFTA, the Audience Prize and the Jury Prize at the Angers Premiers Plans Festival, and received nominations for both the French Césars and for the Oscars.

In early 1997, Sylvain Chomet published *Ugly, poor and sick*, again with Nicolas de Crécy. The book version (Casterman) won the Alph-Art Best Comic Prize at the Angoulême Comic Strip Festival later that year.

Benoît Charest (*composer-conductor, guitar*), the Oscar-nominated composer from Montreal, has written over 20 film scores, including 2003's *The Triplets of Belleville*, which has earned him many awards. Mr. Charest studied at McGill and Montreal Universities before learning his trade touring as a sideman with various bands. A versatile composer and accomplished jazz guitarist, he regularly performed with some of Montreal's finest musicians, and in 1992 he wrote his first score for an NFB documentary. He is presently writing music for his jazz organ trio and touring with Le Terrible Orchestre de Belleville.

When he first sat behind the family organ **Daniel Thouin** (*keyboards*) was seven. Ten years later he was studying classical piano and soon thereafter he started flirting with jazz. He took an interest in electronica and pop music, collaborating with the likes of Mara Tremblay, Yann Perreau, and Marie-Jo Thério, and touring with Jason Bajada and Ghislain Poirier. In 2002, Mr. Thouin assembled the Large Ensemble, an all-star local group fusing jazz and rock. Informed by Miles Davis' late-'60's experiments, Mr. Thouin used the band to flex their improvisational muscles.

Hans Bernhard (*bass*) has a deep and sincere love for the music he plays, a passion which has brought him many rewarding opportunities: a full scholarship to study at the University of Southern California in Los Angeles, the experience of traveling worldwide to share his music, and the occasion to explore, compose, and perform a wide range of musical styles including jazz, rock, American, and Eastern European folk. He moved to Montreal from his home in Santa Cruz, CA to study Sound

Recording at McGill University where he received his master's degree in 2012. He currently resides in Montreal and works fulltime as a performing musician and recording engineer.

Born in Shawinigan (Canada, P.Q.), **Alain Bastien** (*drums*) was self-taught from the age of 15 and continued his musical studies at the Université de Montréal in jazz performance. For the last 20 years, he has been working in different musical contexts, ranging from R&B, funk, and Latin to popular music, although jazz music remains the vehicle within which he operates. Mr. Bastien has played in jazz festivals all around Canada, the US, France, Italy, Belgium, Germany, Spain, Greece, Switzerland, Mexico, and China. Jean Beaudet, Yves Léveillé, Yannick Rieu, Benoît Charest, Tézé Montcalm, Carl Naud, and Abraham Barrera are some of the artists he has collaborated with over the years.

Multi-instrumentalist **Bruno Lamarche** (*saxophone*) has been known in Canada and Europe for more than 20 years. He has had the honor of working with luminaries such as Buddhakick, Félix Stüssi, Ray Anderson, Bernard Primeau, Joel Miller, Ben Monder, Philip Catherine, Christine Duncan, Kurt Rosenwinkel, Don Thompson, and of course, Benoît Charest. His wide-ranging career has seen him perform with Altsys, Dixieband, ONJM, and Jazzlab. A recognized arranger, Mr. Lamarche earned a bachelor of jazz performance at McGill University where he also received the Marion Magor Memorial Scholarship and the James McGill Award.

Michael Emeneau (*percussion*) has worked professionally as a vibraphonist, producer, re-mixer, and arranger for 25 years, playing such diverse genres as, jazz, rock, drum & bass, salsa, techno, country, Hindustani, gospel, Baroque, and orchestral music. During this time he has produced 16 albums, recorded on another 150, composed music for eight films, toured internationally, and lived on three continents. As a solo recording artist he has released a series of highly acclaimed solo albums on independent record labels including Hearts of Space, Daikini, and Six Degree's records. Currently he is member of Benoît Charest's Le Terrible Orchestre de Belleville and Tur Malka, featuring Canadian jazz vocalist Karen Young.

A seasoned and versatile trumpeter, **Aron Doyle** (*trumpet*) has made Montreal home since 1991. Arriving from Vancouver and completing a jazz performance degree at McGill University in 1995, he has settled into a steady playing and teaching career. Amassing 100 plus recordings, multiple tours, and festivals throughout North America and Europe with a wide array of groups, Mr. Doyle also performs fulltime with many of Montreal's mainstay large and small ensembles, including Altsys Jazz Orchestra, Le Dixieband, Joe Sullivan Big Band, Lorraine Desmarais, Christine Jensen, DJ Ram, L'Orchestre National de Jazz de Montréal, and numerous Effendi artists.

Gabriel Gagnon (*trombone*) is an up-and-coming trombonist that is already performing regularly on the Montreal scene in Canada. He is a member of the jazz quartet JAGG and winner of the 2014 new talent contest Jazz en Rafale. Recently the young musician has performed in renowned ensembles such as the Joe

Sullivan Big Band, L'Orchestre National de Jazz de Montréal, and the Christine Jensen Orchestra. Mr. Gagnon obtained a bachelor's degree in jazz performance from McGill University in 2014.

Throughout the years, **David-Etienne Savoie** (*production manager*) has worked as a production manager and main controller on many international projects including Lhasa de Sela (180 concerts worldwide, with four in the US); Patrick Watson (400 concerts worldwide, three in

the US, and 15 with symphonic orchestra); Amadou & Mariam (300 concerts throughout the world, three in the US); AfroCubism (60 concerts around the world, two in the US); Omara Portuondo (20 concerts around the world); and 150 concerts with the wonderful Raul Paz.

UMS welcomes Benoît Charest and Le Terrible Orchestre de Belleville in their UMS debut this evening.

PRODUCTION CREDITS

The Triplets of Belleville is a film by Sylvain Chomet.

Rated PG-13 by the MPAA

© 2003 LES ARMATEURS, PRODUCTION CHAMPION, VIVI FILM, FRANCE 3 CINEMA, RGP FRANCE, AND SYLVAIN CHOMET. ALL RIGHTS RESERVED.

Licensed in the United States through Sony Pictures Classics.



ALTARUM INSTITUTE
SYSTEMS RESEARCH FOR BETTER HEALTH

The arts stimulate the mind and inspire creativity.

Altarum Institute is thrilled to support UMS and provide inspiring and enjoyable cultural opportunities for our team and our community.

Altarum serves the public good by solving complex systems problems to improve human health, integrating research, technology, analysis, and consulting skills.

Join our growing network of partners as we work together to build a healthier future.



www.altarum.org

TONIGHT'S VICTORS FOR UMS



Altarum Institute

—

Phyllis and David Herzig

—

JazzNet Endowment Fund

Supporters of this evening's performance of The Triplets of Belleville.

MAY WE ALSO RECOMMEND...

- 3/11-12 *Nufonia Must Fall*
3/19 Montreal Symphony Orchestra
3/26 Gil Shaham with original films by David Michalek: *Bach Six Solos*

Tickets available at www.ums.org.

ON THE EDUCATION HORIZON...

- 3/12 Panel: How Human-Robot Interaction is Changing the World
(U-M Alumni Center, 200 Fletcher St., 4 pm)

Educational events are free and open to the public unless otherwise noted.

UMS Senate

The UMS Senate is composed of former members of the Board of Directors who dedicate time and energy to UMS and our community. Their ongoing commitment and gracious support of UMS are greatly appreciated.

Wadad Abed
Michael C. Allemang
Carol L. Amster
Gail Davis-Barnes
Kathleen Benton
Lynda Berg
Richard S. Berger
Maurice S. Binkow
DJ Boehm
Lee C. Bollinger
Charles W. Borgsdorf
Janice Stevens-Botsford
Paul C. Boylan
William M. Broucek
Barbara Everitt Bryant
Robert Buckler
Letitia J. Byrd
Kathleen G. Charla
Mary Sue Coleman
Jill A. Corr
Peter B. Corr
Ronald M. Cresswell
Martha Darling
Hal Davis
Sally Stegeman DiCarlo
Robert F. DiRomualdo
Junia Doan
Al Dodds
James J. Duderstadt
David Featherman
David J. Flowers
George V. Fornero
Maxine J. Frankel
Patricia M. Garcia
Beverley B. Geltner
Christopher Genteel
Anne Glendon
Patricia Green
William S. Hann
Shelia M. Harden
Randy J. Harris
Walter L. Harrison
Norman G. Herbert

Deborah S. Herbert
Carl W. Herstein
David Herzig
Peter N. Heydon
Toni Hoover
Kay Hunt
Alice Davis Irani
Stuart A. Isaac
Thomas E. Kauper
Christopher Kendall
David B. Kennedy
Gloria James Kerry
Thomas C. Kinnear
S. Rani Kotha
Marvin Krislov
F. Bruce Kulp
Leo A. Legatski
Melvin A. Lester
Earl Lewis
Patrick B. Long
Helen B. Love
Cynthia MacDonald
Robert C. Macek
Jeffrey MacKie-Mason
Judythe H. Maugh
Rebecca McGowan
Barbara Meadows
Joetta Mial
Lester Monts
Alberto Nacif
Shirley C. Neuman
Jan Barney Newman
Roger Newton
Len Niehoff
Gilbert S. Omenn
Joe E. O'Neal
Randall Pittman
Phil Power
John D. Psarouthakis
Rossi Ray-Taylor
John W. Reed
Todd Roberts
Richard H. Rogel

Prudence L. Rosenthal
A. Douglas Rothwell
Judy Dow Rumelhart
Maya Savarino
Ann Schriber
Edward R. Schulak
John J.H. Schwarz
Erik H. Serr
Ellie Serras
Joseph A. Sesi
Harold T. Shapiro
George I. Shirley
John O. Simpson
Timothy P. Slottow
Anthony L. Smith
Carol Shalita Smokler
Jorge A. Solis
Cheryl Soper
Peter Sparling
James C. Stanley
Lois U. Stegeman
Edward D. Surovell
James L. Telfer
Susan B. Ullrich
Michael D. VanHermert
Eileen Lappin Weiser
B. Joseph White
Marina v.N. Whitman
Clayton E. Wilhite
Iva M. Wilson
Karen Wolff

UMS National Council

The UMS National Council is comprised of U-M alumni and performing arts enthusiasts across the country committed to supporting, promoting, and advocating for UMS with a focus on ensuring that the performing arts are an integral part of the student experience.

Bruce Tuchman <i>Chair</i>	Maxine Frankel Eugene Grant	Zarin Mehta Jordan Morgan
Andrew Bernstein Kathleen G. Charla Jacqueline Davis Marylene Delbourg- Delphis John and Betty Edman Janet Eilber Barbara Fleischman	Charles Hamlen Katherine D. Hein David Heleniak Patti Kenner Wallis C. Klein Jerry and Dale Kolins David Leichtman and Laura McGinn	Caroline Nussbaum James A. Read Herbert Ruben James and Nancy Stanley Christian Vesper Ann and Clayton Wilhite Stephen R. Forrest <i>Ex-Officio</i>

UMS Corporate Council

The UMS Corporate Council is a group of regional business leaders who serve as advocates and advisors to UMS as we seek to broaden our base of corporate support throughout southeastern Michigan.

A. Douglas Rothwell <i>Chair</i>	Richard L. DeVore Nolan Finley Stephen R. Forrest Michele Hodges Mary Kramer David Parsigian Vivian Pickard	Sharon Rothwell Frederick E. Shell Michael B. Staebler James G. Vella Stephen R. Forrest <i>Ex-Officio</i>
Albert Berriz Bruce Brownlee Robert Buckler Robert Casalou		

UMS Students

Students in our volunteer internship and work-study program gain valuable experience in all areas of arts management while contributing greatly to UMS's continued success.

Maryam Ahmed Andrew Bader Genan Bakri Madisen Bathish Meredith Bobber* Sophia Brichta Mysti Byrnes Abigail Choi Tahmid Chowdhury Catherine Cypert Kathryn DeBartolomeis Sophia Deery Taylor Fulton	Trevor Hoffman Annie Jacobson Olivia Johnson Garret Jones Ayantu Kebede Meredith Kelly Emily Kloska Caitlyn Koester Bridget Kojima Jakob Lenhardt Robert Luzynski Manami Maxted Christina Maxwell*	Shenell McCray Westley Montgomery Tsukumo Niwa* Katie Patrick Evan Saddler* Heather Shen Brice Smith Rachel Stopchinski Edward Sundra Joey Velez Justin Wong *21st Century Artist Interns
--	--	--

**Organic.
Holistic.
No Artificial Ingredients.**

Psychoanalysis helps—mind, body, and soul.

Ask one of our psychoanalysts how you, or someone you love, can work on achieving a fuller, richer life.

**Michigan
Psychoanalytic
INSTITUTE
&
SOCIETY**



*For change that lasts.
Learn more about us. www.mpi-mps.org*

Carol Barbour, PhD
Alex Barends, PhD
Ronald Benson, MD
Meryl Berlin, PhD
Robert Cohen, PhD
Susan Cutler, PhD
Sara Dumas, MD
Joshua Ehrlich, PhD
Harvey Falit, MD
Richard Hertel, PhD
Erika Homann, PhD
Howard Lerner, PhD
Barry Miller, MD
Christina Mueller, MD
Jack Novick, PhD
Kerry Kelly Novick
Jean-Paul Pegeron, MD
Dwarakanath Rao, MD
Ivan Sherick, PhD
Merton Shill, PhD
Michael Shulman, PhD
Michael Singer, PhD
Jonathan Sugar, MD
Dushyant Trivedi, MD
Jeffrey Urist, PhD
Gail van Langen, PhD
David Votruba, PhD
Margaret Walsh, PhD
Elisabeth Weinstein, MD
Mark Ziegler, PhD



**Celebrating
137 Successful Seasons**

Jaffe
JAFFE RAITT HEUER & WEISS
*A Professional Corporation
Attorneys & Counselors*

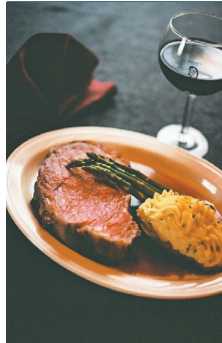
proud supporter of

ums
BE PRESENT

535 W. WILLIAM STREET, SUITE 400S • ANN ARBOR, MICHIGAN 48103
P: 734.222.4776 • F: 734.222.4769

www.jaffelaw.com

ANN ARBOR • SOUTHFIELD • DETROIT • NAPLES



Join us for
cocktails and
dinner at our
two Ann Arbor
restaurants for
a spectacular
meal after the
performance.



Serving steaks cut in our own market, Knight's famous prime rib, falling-off-the-bone ribs, burgers, seafood, salads, daily specials, "home-baked" bread and desserts.

Knight's Steakhouse

600 East Liberty • 734/887-6899

2324 Dexter Avenue • 734/665-8644

Open Daily 11 a.m. to Midnight - Liberty St.

Preferred Seating Available

www.Knightsrestaurants.com

UMS Faculty Insight Group

As part of the UMS Mellon Initiative on Arts/Academic Integration, this group advises UMS staff on opportunities to integrate our programming more deeply and systematically into the academic life of the University of Michigan.

Mark Clague	Linda Gregerson	Daniel Klionsky	Lester Monts
Clare Croft	Marjorie Horton	Lawrence	Melody Racine
Philip J. Deloria	Joel Howell	La Fountain-	Sidonie Smith
Gillian Eaton	Martha S. Jones	Stokes	Emily Wilcox

UMS K-12 Think Tank

Through an annual think tank, UMS brings together K-12 educators and administrators to help us stay aware of trends, changing resources, and new opportunities for learning in the K-12 classroom. The following individuals participated in May 2015:

Robin Bailey	Janet Callaway	Katie Mann	Terra Webster
Ann Marie Borders	Kathy Churchill	Naomi Norman	Amy Willacker
Deb Brzoska	Colleen Conway	Michelle Peet	
Jennifer Burton	Amy Deller	Yael Rothfeld	
Rose Marie Callahan	Tia Farrell	Sarena Shivers	
	Dayna Lang	Laura Wayne	

UMS Ambassadors

UMS Ambassadors advance the goals of UMS, champion the UMS mission through community engagement, provide and secure financial support, and assist in countless other ways.

Louise Taylor <i>Chair</i>	Judy Cohen	Michael Lee	Kathy Rich
William Shell <i>Vice Chair</i>	Jon Desenberg	Gloria Lewis	Nan Richter
Karen Bantel <i>Secretary</i>	Susan DiStefano	Laura Machida	Audrey Schwimmer
Wendy K. Zellers <i>Treasurer</i>	Annemarie Kilburn	Katie Malicke	Carol Senneff
Pat Bantle <i>Past Chair</i>	Dolan	Rita Malone	Arlene P. Shy
Sassa Akervall	Sharon Peterson	Valerie Roedenbeck	Elena Snyder
Arlene Barnes	Dort	Maloof	Ren Snyder
Astrid Beck	Gloria J. Edwards	Patti McCloud	Susan Snyder
Gail Bendit	Christina Ferris	Terry Meerkov	Linda Spector
Corry Berkooz	Zita Gillis	Barbara Mulay	Pam Tabbaa
Connie Rizzolo	Joan Grissing	Magda Munteanu	Elaine Tetreault
Brown	Stephanie Hale	Jane Nyman	Janet Torno
Richard Chang	Jane Holland	Marjorie Oliver	Martha Williams
	Allison Jordon	Betty Palms	Sarajane Winkelman
	Carol Kaplan	Karen Pancost	
	Nancy Karp	Ruth Petit	
	Barbara Kaye	Julie Picknell	
	Kendra Kerr	Susan Pollans	
	Freddi Kilburn	Anne Preston	
	Ye Na Kim	Jeff Reece	
	Russell Larson		



STATE SIDES

with Cynthia Canty

Conversations About What Matters In Michigan

Monday – Thursday at 3 p.m. & 10 p.m.



Your NPR news station **npr**

91.7 FM Ann Arbor/Detroit
104.1 FM West Michigan
91.1 FM Flint
michiganradio.org

MILLER CANFIELD APPLAUDS THE

UNIVERSITY MUSICAL SOCIETY

For Being an Instrumental Part
of Our Community

**MILLER
CANFIELD**
millercanfield.com

ANN ARBOR DETROIT GRAND RAPIDS KALAMAZOO LANSING TROY

OUR ANN ARBOR LAWYERS | 101 North Main St., 7th Floor, Ann Arbor, MI 48104 | 734.663.2445

Paul R. Dimond
Joseph M. Fazio
Samantha S. Galecki
Robert E. Gilbert

Caroline B. Giordano
Lisa C. Hagan
Joseph C. Huntzicker
M. Sheila Jeffrey
Jeffrey L. LaBine

Anthony J. Mavrinac
John W. McNair
Sonal Hope Mithani
John D. Moran
Kristin E. Nied

David D. O'Brien
Thomas C. O'Brien
Emily C. Palacios
Stephen G. Palms
Clarence L. Pozza, Jr.

Kimberly L. Scott
Erik H. Serr
Timothy D. Sochocki
Christopher M. Trebilcock

UMS Staff

The UMS Staff works hard to inspire individuals and enrich communities by connecting audiences and artists in uncommon and engaging experiences.

ADMINISTRATION & FINANCE

Kenneth C. Fischer
President

John B. Kennard, Jr.
Director of Administration

Kathy Brown
Executive Assistant

Jenny Graf
*Tessitura Systems
Administrator*

Patricia Hayes
Financial Manager

John Peckham
*Information Systems
Manager*

DEVELOPMENT

Marnie Reid
Director of Development

Esther Barrett
Development Coordinator

Susan Bozell Craig
*Associate Director of
Development, Corporate
Partnerships & Major Gifts*

Rachelle Lesko
Annual Fund Manager

Lisa Michiko Murray
*Associate Director of
Development, Foundation
& Government Relations*

Cindy Straub
*Manager of Volunteers &
Special Events*

Mary A. Walker
*Campaign Director and
Associate Director of
Development, Major Gifts*

EDUCATION & COMMUNITY ENGAGEMENT

James P. Leija
*Director of Education &
Community Engagement*

Shannon Fitzsimons
*Campus Engagement
Specialist*

Teresa C. Park
Education Coordinator

Mary Roeder
*Community Programs
Manager*

MARKETING & COMMUNICATIONS

Sara Billmann
*Director of Marketing &
Communications*

Jesse Meria
*Video Production
Specialist*

Annick Odom
Marketing Coordinator

Anna Prushinskaya
*Senior Manager of Digital
Media*

Mallory Schirr
*Marketing & Media
Relations Coordinator*

PROGRAMMING & PRODUCTION

Michael J. Kondziolka
Director of Programming

Jeffrey Beyersdorf
Production Director

Alex Gay
Production Coordinator

Anne Grove
Artist Services Manager

Mark Jacobson
*Senior Programming
Manager*

Saba Keramati
*Programming &
Production Assistant*

Liz Stover Rosenthal
Programming Manager

TICKET OFFICE

Christina Bellows
Ticket Services Manager

Megan Boczar
Ticket Office Assistant

Katherine McBride
*Group Sales &
Promotions Coordinator*

Ellen Miller
*Ticket Office/Front-of-
House Assistant*

Anné Renforth
*Ticket Services
Coordinator*

Anna Simmons
*Assistant Ticket Services
Manager*

Willie Sullivan
*Front-of-House
Coordinator*

Dennis Carter, Bruce
Oshaben, Brian Roddy
Head Ushers

UMS CHORAL UNION

Scott Hanoian
*Music Director &
Conductor*

Arienne Abela
Assistant Conductor

Kathleen Operhall
Chorus Manager

Nancy Heaton
Chorus Librarian

Jean Schneider
Accompanist

Scott VanOrnum
Accompanist

**Trusted financial advisors
to Ann Arbor and the
university community for
more than 30 years.**



Retirement Income Solutions

Helping to grow and preserve your wealth

Ann Arbor | 734-769-7727 | risadvisory.com

© 2015 Retirement Income Solutions is an Independent Investment Advisor

Volunteer for ums

UMS is recruiting new volunteers! If you are passionate about the arts and looking for ways to be an advocate for UMS, we hope you'll consider joining us.

To learn more, please contact Cindy Straub at
734.647.8009 or
straub@umich.edu.

STAY CLASSIC

Timeless. Contemporary.
Soothing. Inspiring.

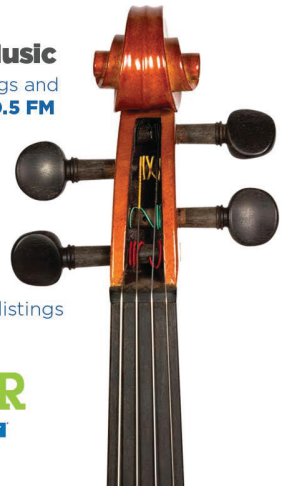
Classical Music

Daytime, evenings and
overnight on **90.5 FM**

FORTE

High school
performers in
pursuit of
excellence.

Check local **TV** listings



WKAR



Generous Donors

Campaign Gifts and Multi-Year Pledges

To help ensure the future of UMS, the following donors have made gifts to the Victors for Michigan campaign. We are grateful to these donors for their commitments.

CAMPAIGN CO-CHAIRS

Maxine Frankel and
James Stanley

\$500,000 OR MORE

Carl Cohen
Ilene H. Forsyth
Maxine and Stuart Frankel
Foundation
Eugene and Emily Grant
Family Foundation
The Andrew W. Mellon
Foundation
Candis J. and Helmut F. Stern
The Wallace Foundation

\$100,000–\$499,999

Anonymous
Bert Askwith and Patti
Askwith Kenner
Emily W. Bandera
Dennis Dahlmann
Sharon and Dallas Dort
Stephen and Rosamund
Forrest
Susan and Richard Gutow
Wallis Cherniack Klein
David Leichtman and Laura
A. McGinn
Norma and Dick Sarns
Ron and Eileen Weiser
Max Wicha and Sheila
Crowley
Ann and Clayton Wilhite

\$75,000–\$99,999

David and Phyllis Herzig
Nancy and James Stanley

\$50,000–\$74,999

Essel and Menacka Bailey
Daniel and Barbara Balbach
Penny and Ken Fischer
Beverley and Gerson Geltner
Mohamad Issa/Issa
Foundation
Miller, Canfield, Paddock
and Stone, P.L.C.
Mr. and Mrs. Donald L.
Morelock
Agnes Moy-Sarns and David
Sarns and the Sarns Family
Gil Omenn and Martha
Darling
Tim and Sally Petersen
Phil and Kathy Power
Sharon and Doug Rothwell
Linda Samuelson and Joel
Howell
Jane and Edward Schulak
Dennis and Ellie Serras
Glenn E. Watkins
Marina and Bob Whitman
Gerald B. Zelenock

\$25,000–\$49,999

Carol Amster
Cheryl Cassidy
Junia Doan
John R. Edman and Betty B.
Edman
Barbara H. Garavaglia
Charles H. Gershenson Trust
Anne and Paul Glendon
Norman and Debbie Herbert
Carl and Charlene Herstein
Jerry and Dale Kolins

Jeffrey MacKie-Mason and
Janet Netz
Martin Family Foundation
M. Haskell and Jan Barney
Newman
Dan and Sarah Nicoli
Lois Stegeman
Stout Systems
John W. and Gail Ferguson
Stout
Karen and David Stutz
Dody Viola

\$15,000–\$24,999

Michael and Suzan
Alexander
Linda and Ronald Benson
Valerie and David Canter
Sara and Michael Frank
Wendy and Ted Lawrence
Virginia and Gordon Nordby
Eleanor Pollack

\$5,000–\$14,999

Barbara Anderson and John
Romani
John and Lillian Back
Karen Bantel and Steve
Geiringer
Suzanne A. and Frederick J.
Beutler
Conlin Travel, Inc.
Tim and Robin Damschroder
Michele Derr
Ann Martin and Russ Larson
Steve and Betty Palms
Eric and Ines Storhok

Classical & Music & NPR News

Listen online at
www.wgte.org

*Listen on the
radio at*

WGTE FM 91.3 Toledo

WGLE 90.7 Lima

WGBE 90.9 Bryan

WGDE 91.9 Defiance



wgte
Public Media

**SMITH HAUGHEY AND
ITS ATTORNEYS PROUDLY
SUPPORT THE...**

UNIVERSITY MUSICAL SOCIETY

Our Ann Arbor Attorneys:

Cheryl Chandler
Gary Eller
Sharon Kelly
Veronique Liem

Edward Lynch
Gabe Marinaro
Michael Miller
Edward Stein

SH SMITH HAUGHEY
RICE & ROEGGE
ATTORNEYS AT LAW
734-213-8000 www.shrr.com
213 S. ASHLEY, STE. 400
ANN ARBOR, MI 48104



Contemporary Food
Classic Décor • Full Bar
Locally Owned

316 S. State Street
@ North University
734-994-4004

www.redhawkann Arbor.com

revive

soups • custom salads • classic sandwiches

replenish

essential groceries • beer & wine

619 East University @ Zaragon Place
734-332-3366 • www.revive-replenish.com

ZELL VISITING WRITERS SERIES

2016

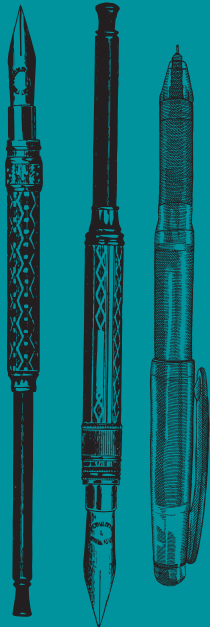
Bringing the world of literature to Ann Arbor



The Zell Visiting Writers Series offers regular readings by some of the finest global voices in contemporary literature.

Details at:
lsa.umich.edu/writers

All events are free and open to the public.



Endowed Funds

The success of UMS is secured in part by income from UMS endowment funds. You may contribute to an existing endowment fund or establish a named endowment with a minimum gift of \$25,000. We extend our deepest appreciation to the many donors who have established and/or contributed to the following funds:

H. Gardner and Bonnie Ackley Endowment Fund
Herbert S. and Carol Amster Endowment Fund
Catherine S. Arcure Endowment Fund
Carl and Isabelle Brauer Endowment Fund
Dahlmann Sigma Nu Endowment UMS Fund
Hal and Ann Davis Endowment Fund
Dallas and Sharon Dort Endowment Fund
Doris Duke Charitable Foundation Endowment Fund
John R. and Betty B. Edman Endowment Fund
Epstein Endowment Fund
Stephen and Rosamund Forrest Student Ticket Endowment Fund
Ilene H. Forsyth Endowment Funds for Choral Union, Chamber Arts, and Theater
James Garavaglia Theater Endowment Fund
Anne and Paul Glendon Endowment Fund
Susan and Richard Gutow Renegade Ventures Endowment Fund
George N. and Katharine C. Hall Endowment Fund
Norman and Debbie Herbert Endowment Fund
David and Phyllis Herzig Endowment Fund
JazzNet Endowment Fund
William R. Kinney Endowment Fund
Wallis Cherniack Klein Endowment for Student Experiences
Dr. and Mrs. Jerry Kolins Shakespearean Endowment Fund
Frances Mauney Lohr Choral Union Endowment Fund
Natalie Matovinović Endowment Fund
Medical Community Endowment Fund
Dr. Robert and Janet Miller Endowment Fund
NEA Matching Fund
Ottmar Eberbach Funds
Palmer Endowment Fund
Mary R. Romig-deYoung Music Appreciation Fund
Prudence and Amnon Rosenthal K-12 Education Endowment Fund
Charles A. Sink Endowment Fund
Herbert E. and Doris Sloan Endowment Fund
James and Nancy Stanley Endowment Fund
Susan B. Ullrich Endowment Fund
UMS Endowment Fund
The Wallace Endowment Fund
The Zelenock Family Endowment Fund

**15
16** SEASON

**BEETHOVEN FESTIVAL with
GARRICK OHLSSON**

September 19
Hill Auditorium



**ROMANTIC
TCHAIKOVSKY**

October 24
Michigan Theater



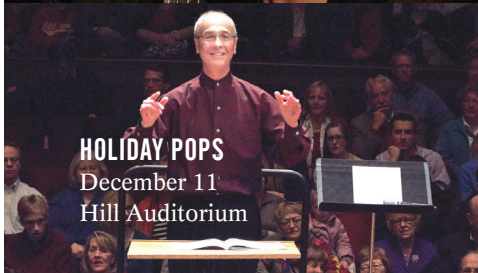
**MENDELSSOHN
"ITALIAN"**

November 7
Michigan Theater



HOLIDAY POPS

December 11
Hill Auditorium



**MOZART
BIRTHDAY BASH**

January 16
Michigan Theater



HARP MAGIC

March 12
Michigan Theater



THE PLANETS

April 9
Michigan Theater



Ann Arbor Symphony Orchestra

(734) 994-4801 • a2so.com

Planned Gifts/Bequests

We are grateful to the following donors for including UMS in their estate plans. These gifts will provide financial support to UMS for generations to come.

Anonymous
 Bernard and Raquel Agranoff
 Mike Allemang
 Carol and Herb Amster
 Neil P. Anderson
 Dr. and Mrs. David G. Anderson
 Catherine S. Arcue
 Barbara K. and Laurence R. Baker
 Rodney and Joan Bentz
 Kathy Benton and Robert Brown
 Linda and Maurice Binkow
 Elizabeth S. Bishop
 Mr. and Mrs. W. Howard Bond
 Mr. and Mrs. Pal E. Borondy
 Barbara Everitt Bryant
 Lou and Janet Callaway
 Pat and George Chatas
 Mr. and Mrs. John Alden Clark
 Carl Cohen
 Alan and Bette Cotzin
 Mary C. Crichton
 Dallas and Sharon Dort
 Penny and Ken Fischer
 Susan Ruth Fisher
 Meredith L. and Neal Foster
 Thomas and Barbara Gelehrter
 Beverley and Gerson Geltner
 Dr. Sid Gilman and Dr. Carol Barbour
 Anne and Paul Glendon
 Thea and Elliot Glicksman
 Debbie and Norman Herbert
 David and Phyllis Herzig
 Rita and Peter Heydon
 John and Martha Hicks

Gideon and Carol Hoffer
 Marilyn G. Jeffs
 Thomas C. and Constance M. Kinnear
 Diane Kirkpatrick
 Dr. and Mrs. Jerry Kolins
 Frank Legacki and Alicia Torres
 Leo and Kathy Legatski
 Richard LeSueur
 Robert and Pearson Macek
 Susan McClanahan
 Griff and Pat McDonald
 Joanna McNamara
 M. Haskell and Jan Barney Newman
 Len Niehoff
 Dr. and Mrs. Frederick O'Dell
 David Parsigian
 Irena Politano
 Eleanor Pollack
 Mr. and Mrs. Dennis M. Powers
 Mr. and Mrs. Michael Radock
 Mr. and Mrs. Jack Ricketts
 Prue and Ami Rosenthal
 Irma J. Sklenar
 Art and Elizabeth Solomon
 Richard W. Solt
 Hildreth Spencer
 Eric and Ines Storhok
 Louise Taylor
 Roy and JoAn Wetzell
 Ann and Clayton Wilhite
 Max Wicha and Sheila Crowley
 Marion Wirick
 Mr. and Mrs. Ronald G. Zollar

How to Make a Gift

UMS excites the imagination, sparks creativity, sharpens collaboration, inspires new ways of thinking, and connects us in ways that only the arts can. Your gift of any size will enable UMS to deliver world-class performances and create outstanding educational opportunities for our community.

Please send gift to:
 UMS Development
 881 N. University Ave
 Ann Arbor, MI 48109-1011

For more information, please call 734.764.8489 or visit ums.org/support.

UMS Support – July 1, 2014–December 15, 2015

The following list includes donors who made gifts to UMS between July 1, 2014 and December 15, 2015. Due to space restraints, we can only list in the UMS program book those who donated \$250 or more. Donors of \$1–\$249 will be included in the online list at ums.org.

PRODUCERS (\$500,000 OR MORE)

Ilene H. Forsyth #
Eugene and Emily Grant Family
Foundation
University of Michigan

DIRECTORS (\$100,000–\$499,999)

Anonymous
Carl and Isabelle Brauer Fund #
Ford Motor Company Fund and
Community Services
Maxine and Stuart Frankel
Foundation
Karl V. Hauser #
The Andrew W. Mellon Foundation
University of Michigan Health System
The Wallace Foundation

SOLOISTS (\$50,000–\$99,999)

Anonymous
Anonymous #
Bert Askwith and Patti Askwith
Kenner
Community Foundation for
Southeast Michigan
Dance/USA
Doris Duke Charitable Foundation
DTE Energy Foundation
Masco Corporation Foundation
National Endowment for the Arts
Linda and Stuart Nelson
in honor of Ken Fischer

MAESTROS (\$20,000–\$49,999)

Anonymous
Anonymous #
Emily W. Bandera, M.D.
Noreen and Kenneth Buckfire
Sharon and Dallas Dort #
Stephen and Rosamund Forrest #
Barbara H. Garavaglia #
in memory of Jim Garavaglia
Beverley and Gerson Geltner
Charles H. Gershenson Trust, Maurice
S. Binkow, Trustee
Susan and Richard Gutow #
KeyBank
Jeffrey MacKie–Mason and Janet Netz
Michigan Council for Arts and Cultural
Affairs
Philip and Kathy Power
Norma and Dick Sarns #
Sesi Lincoln
Toyota
Bruce G. Tuchman
U–M Third Century Initiative
Ron and Eileen Weiser

Max Wicha and Sheila Crowley
Ann and Clayton Wilhite

VIRTUOSOS (\$10,000–\$19,999)

Gerald and Gloria Abrams
*includes gift in honor of John M.
Nicklas*
Altarum Institute
Menakka and Essel Bailey #
Barbara and Daniel Balbach #
Bank of Ann Arbor
Joseph A. Bartush, LS&A, Class of '71
Bendit Foundation
Rachel Bendit and Mark Bernstein
Maurice and Linda Binkow
Carl Cohen
Jim and Patsy Donahey
Penny and Ken Fischer
Anne and Paul Glendon
David and Phyllis Herzig
Joel Howell and Linda Samuelson
The Japan Foundation
Frank Legacki and Alicia Torres
Natalie Matovinovic
in memory of Josip Matovinovic MD
McKinley Associates, Inc.
Thomas and Deborah McMullen
McMullen Properties
Ann R. Meredith
Miller, Canfield, Paddock and Stone
P.L.C.
Mr. and Mrs. Donald L. Morelock
New England Foundation for the Arts
Old National Bank
Gil Omenn and Martha Darling
Leslee and Michael Perstein
in honor of Margie McKinley
Tim and Sally Petersen #
PNC Foundation
James Read
Retirement Income Solutions
Sharon and Doug Rothwell
Agnes Moy–Sarns and David Sarns
Jane and Edward Schulak
Dennis and Ellie Serras
Gary and Diane Stahle
Nancy and James Stanley
University of Michigan Credit Union
Stanford and Sandra Warszawsky
Robert O. and Darragh H. Weisman
in honor of Jean and Sidney Silber
Robert and Marina Whitman
Fred and Judy Wilpon
Gerald B. (Jay) Zelenock #

CONCERTMASTERS (\$5,000–\$9,999)

Michael Allemang and Janis Bobrin
Carol Amster

Barbara A. Anderson
*includes gift in memory of John H.
Romani*

Ann Arbor Automotive
Anonymous
Linda and Ronald Benson
Andrew and Lisa Bernstein
Gary Boren
Edward and Mary Cady
Valerie and David Canter
Cheryl Cassidy
Comerica Bank
Anne and Howard Cooper
Junia Doan
Faber Piano Institute
Randall and Nancy Faber
David and Jo–Anna Featherman
Barbara G. Fleischman
George W. Ford
*includes gift in memory of Steffi
Reiss*
Katherine and Tom Goldberg
Lynn and Martin Halbfinger
Norman and Debbie Herbert #
Carl and Charlene Herstein
Honigman Miller Schwartz and Cohn
LLP
David and Sally Kennedy
*in memory of Elizabeth Earhart
Kennedy*
Jerry and Dale Kolins #
Samuel and Marilyn Krimm
Level X Talent
Richard and Carolyn Lineback
Benard L. Maas Foundation
Mardi Gras Fund
Martin Family Foundation #
Dan and Sarah Nicoli
THE MOSAIC FOUNDATION (of R. &
P. Heydon)
M. Haskell and Jan Barney Newman
Virginia and Gordon Nordby
Rob and Quincy Northrup
Eleanor Pollack
Frances Quarton
Corliss and Dr. Jerry Rosenberg
in honor of Ken Fischer
Prue and Ami Rosenthal
Lynne Rosenthal
RunSignUp
Savco Hospitality
Lois Stegeman
The Summer Fund of the Charlevoix
County Community Foundation
Stout Systems
John W. and Gail Ferguson Stout
Karen and David Stutz
*includes gift in honor of Donald
and Antoinette Morelock*
Dody Viola
Dr. Carl Winberg
in honor of Margie McKinley

LEADERS

(\$2,500–\$4,999)

Jim and Barbara Adams
 Michael and Suzan Alexander
 Anonymous
 Arts Midwest Touring Fund
 John and Lillian Back
 Karen Bantel and Steve Geiringer
 Dr. Carol Barbour and Dr. Sid Gilman
 Robert and Wanda Bartlett
 Bradford and Lydia Bates
 Kathy Benton and Robert Brown
 Suzanne A. and Frederick J. Beutler #
 DJ and Dieter Boehm
includes gift in honor of Sara Billmann
 Carolyn M. Carty and Thomas H. Haug
 Jean and Ken Casey
 Conlin Travel, Inc.
 Julia Donovan Darlow and John Corbett O'Meara
 Elena and Nicholas Delbanco
 Marylene Delbourg-Delphis
 Alice Dobson
 John Dryden and Diana Raimi
 Charles and Julia Eisendrath
 Joan and Emil Engel
 Sara and Michael Frank
 Prof. David M. Gates
 Thomas and Barbara Gelehrter
 Bill and Ruth Gilkey
 John Griffith
 Robert and Dannielle Hamilton
 Katherine D. Hein
 David W. Heleniak #
 Connie and Tom Kinnear
 Diane Kirkpatrick
 Philip and Kathryn Klintworth
 Ted and Wendy Lawrence
 Leo and Kathy Legatski
 Carolyn and Paul Lichter
 Lawrence and Rebecca Lohr #
 E. Daniel and Kay Long #
 Jean E. Long
 Ernest and Adèle McCarus
 Susan McClanahan and Bill Zimmerman
includes a gift in honor of Donald and Antoinette Morelock
 Estate of Michael G. McGuire
 Paul Morel and Linda Woodworth
 Anthony and Vivian Mosellie
 William Nolting and Donna Parmelee
 Steve and Betty Palms
 Elizabeth and David Parsigian
 Judith A. Pavitt
 Bertram and Elaine Pitt
 Rick and Mary Price
 Jim and Bonnie Reece
 John W. Reed
in honor of Ken Fischer
 Anthony L. Reffells
 Nathaniel and Melody Rowe
 Herbert and Ernestine Ruben
 Frankie and Scott Simonds
in honor of Candis and Helmut Stern

Victor Strecher and Jeri Rosenberg
 Ed and Natalie Surovell
 Judy and Lewis Tann
 Keturah Thunder Haab
 Jim Toy
includes gifts in honor of Ken Fischer and in memory of Jerry Fischer
 Elise Weisbach

PATRONS

(\$1,000–\$2,499)

Katherine Aldrich
 Richard and Mona Alonzo
 American Title Company of Washtenaw
 Christiane Anderson
 David G. and Joan M. Anderson #
 John Anderson and Lyn McHie
 Dave and Katie Andrea
 Anonymous
 Anonymous
in honor of Jean Campbell
 Dr. and Mrs. Rudi Ansbacher
 Harlene and Henry Appelman
 Dr. Frank J. Ascione
 Bob and Martha Ause
 Elizabeth R. Axelson and Donald H. Regan
 Jonathan Ayers and Teresa Gallagher
 Patricia Bard
 Lisa and Jim Baker
 Rosalyn, Joshua and Beth Barclay
in memory of Mel L. Barclay, M.D.
 John and Ginny Bareham
 David and Monika Barera
 Anne Beaubien and Phil Berry
 Cecilia Benner
in memory of David Lebenborn
 Dr. Rosemary R. Berardi and Dr. Carolyn R. Zaleon
 Sara Billmann and Jeffrey Kuras
 Joan Binkow
 John Blankley and Maureen Foley
 Blue Nile Restaurant
 Margaret and Howard Bond
 Rebecca S. Bonnell
 Charles and Linda Borgsdorf
 Laurence and Grace Boxer
 Dr. and Mrs. Ralph R. Bozell
 Dale E. and Nancy M. Briggs
 Bill Brinkerhoff and Kathy Sample
 David and Sharon Brooks
 Robert and Jeannine Buchanan
 Lawrence and Valerie Bullen
 Joan and Charley Burleigh
 Barbara and Al Cain
 Lou and Janet Callaway
 Dan Cameron Family Foundation
 Jean W. Campbell
 Sally Camper and Bob Lyons
 Thomas and Marilou Capov
 Anne Chase
 Patricia Chatas
 Myung Choi
 Brian and Cheryl Clarkson
 Ellen and Hubert Cohen
 Deborah Keller-Cohen and Evan Cohen
 Connie and Jim Cook
 Mac and Nita Cox
 Christopher Dahl and Ruth Rowse
in honor of Ken Fischer
 Timothy and Robin Damschroder
 Charles and Kathleen Davenport
 Michele Derr
in memory of Ellwood Derr
 Monique Deschaine
 Molly Dobson
 Jill and Doug Dunn
 Peter and Grace Duren
 Rosalie Edwards/Vibrant Ann Arbor Fund of the Ann Arbor Area Community Foundation
 Johanna Epstein and Steven Katz
 Harvey and Elly Falit
in honor of Carol and Norman Schnall
 Margaret and John Faulkner
 Esther Floyd
 Food Art
 Dan and Jill Francis
 Judy and Paul Freedman
 Leon and Marcia Friedman
 Bill and Boc Fulton
 Zita and Wayne Gillis
 Heather and Seth Gladstein
 Barbara and Fred Goldberg #
 Cozette T. Grabb
 Nicki Griffith
 Leslie and Mary Ellen Guinn
 Kenneth and Margaret Guire #
 Marlys Hamill
 Jeff Hannah and Nur Akcasu
 Randall L. and Nancy Caine Harbour #
 Clifford and Alice Hart
 Larry Hastie
 Daniel and Jane Hayes
 Sivana Heller
 Diane S. Hoff #
 Robert M. and Joan F. Howe
 Eileen and Saul Hyman
 IATSE Local 395
 Jean Jacobson
 Janet and Wallie Jeffries
 Timothy and Jo Wiese Johnson
 Liz Johnson
 Kent and Mary Johnson
in memory of Dr. Mel Barclay
 Mark and Madolyn Kaminski
 Richard and Sylvia Kaufman
in honor of Ken Fischer
 James A. Kelly and Mariam C. Noland
 Carolyn and Jim Knake
 Michael J. Kondziolka and Mathias-Philippe Badin
 Barbara and Michael Kratchman
 Donald and Jeanne Kunz
 Ann Martin and Russ Larson
 Jerry and Marion Lawrence
 John K. Lawrence and Jeanine A. DeLay
 David Leichtman and Laura A. McGinn
 Richard LeSueur
 Evie and Allen Lichter
 Fran Lyman
 John and Cheryl MacKrell
 Edwin and Cathy Marcus

Nancy and Philip Margolis
 Betsy Yvonne Mark
 W. Harry Marsden
 Howard L. Mason
 Mary M. Matthews
 Jerry A. and Deborah Orr May #
 W. Joseph McCune and Georgiana
 M. Sanders
 Griff and Pat McDonald
 James H. McIntosh and Elaine K.
 Gazda
 Margaret McKinley
 Michael and Terrie McLaughlan #
 Scott and Julie Merz
 Bert and Kathy Moberg
 Lester and Jeanne Monts
 Virginia Morgan
 Moscow Philanthropic Fund
 John and Ann Nicklas
 Susan and Mark Orringer #
 Elisa A. Ostafin
 Lisa and John Peterson
 Pfizer Foundation
 Juliet S. Pierson
 Susan Pollans and Alan Levy
 Stephen and Bettina Pollock
 Jeff Reece
 Marnie Reid
 Ray and Ginny Reilly
 Malverne Reinhart
 Richard and Susan Rogel
 Huda Karaman Rosen
 Craig and Jan Ruff
 Karem and Lena Sakallah
 Maya and Stephanie Savarino
 Erik and Carol Serr
 Janet Shatusky
 Alyce Sigler
 Carl Simon and Bobbi Low
 Nancy and Brooks Sitterley
 Michael Sivak and Enid Wasserman
 Barbara Furin Sloat
 Janet Kemink and Rodney Smith, MD
 Ren and Susan Snyder
 Linh and Dug Song
 Cheryl Soper
 Michael B. Staebler and Jennifer R.
 Poteat
 Ted St. Antoine
 Virginia E. Stein #
 Eric and Ines Storhok
 Dalia and Stan Strasius
 Charlotte Sundelson
 Louise Taylor
 Ted and Eileen Thacker
 Louise Townley
 Jeff and Lisa Tulin-Silver
 Susan B. Ullrich #
 Jack and Marilyn van der Velde
 Douglas and Andrea Van Houweling
 Joyce Watson and Marty Warshaw
 Harvey and Robin Wax
*includes a gift in honor of Penny
 Fischer*
 Lauren and Gareth Williams
 Max and Mary Wisgerhof
 Charles Witke and Aileen Gatten
 The Worsham Family Foundation
 Thomas and Karen Zelnik
 Thomas and Erin Zurbuchen #

BENEFACTORS (\$500 – \$999)

Tena Achen
 Roger Albin and Nili Tannenbaum
 Christine W. Alvey
 Neil P. Anderson
 Anonymous
 Sandy and Charlie Aquino
 Penny and Arthur Ashe
 Ralph and Barbara Babb
in memory of Jim Garavaglia
 Laurence R. and Barbara K. Baker
 Reg and Pat Baker
 Nancy Barbas and Jonathan Sugar
 Astrid B. Beck
 Gail M. Bendit
 Rodney and Joan Bentz
 James K. and Lynda W. Berg
 Peggy and Ramon Berguer
in honor of Jim and Nancy Stanley
 L. S. Berlin and Jean McPhail
 Raymond and Janet Bernreuter
 Dr. John E. Billi and Dr. Sheryl Hirsch
 William and Ilene Birge
 Jerry and Dody Blackstone #
 Ron and Mimi Bogdasarian
 R.M. Bradley and C.M. Mistretta
 Joel Bregman and Elaine Pomeranz
 Charles C. Bright and Susan Crowell
 Susan and Oliver Cameron
 Thomas and Colleen Carey
 Brent and Valerie Carey
 Jack and Susan Carlson
 Barbara Mattison Carr
 Andrew Caughey MD and
 Shelly Neitzel MD
 Tsun and Siu Ying Chang
 Samuel and Roberta Chappell
 John and Camilla Chiapuris
 Reginald and Beverly Ciokajilo
 Mark Clague and Laura Jackson
 Judy and Malcolm Cohen
 Jon Cohn and Daniela Wittmann
 Arnold and Susan Coran
 Paul Courant and Marta Manildi
 Katherine and Clifford Cox
 Clifford and Laura Craig #
 John and Mary Curtis
 Roderick and Mary Ann Daane
 Linda Davis and Bob Richter
in honor of Ken Fischer
 David Deromedi
in memory of Nancy Deromedi
 Andrzej and Cynthia Dlugosz
 Karen Yamada and Gary Dolce
 Ed and Mary Durfee
 James F. Eder
 John R. Edman
 Gloria Edwards
 Barbara and Tony Eichmuller
 Alan S. Eiser
 Phil and Phyllis Fellin
 Carol Finerman
 Susan Fisher
 Scott and Janet Fogler
 David Fox and Paula Bockenstedt
 Christopher Friese
in honor of Jerry Blackstone
 Carol Gagliardi and David Flesher
 Tom Gasloli
 Renate Gerulaitis

David and Maureen Ginsburg #
 Ken Gottschlich and Martha Pollack
 Christopher and Elaine Graham
 Martha and Larry Gray
 Dr. John and Renee M. Greden
 Drs. Patricia and Stephen Green
 Raymond Grew
 Werner H. Grik
in memory of Warren L. Hallock
 Steven and Sheila Hamp
 Alan Harnik and Prof Gillian Feeley-
 Harnik
 Martin D. and Connie D. Harris
 Dr. Don P. Haefner and Dr. Cynthia
 J. Stewart
 Helen C. Hall
 Stephen Henderson
 Kay Holsinger and Douglas C. Wood
 Jim and Colleen Hume
 Ann D. Hungerman
 Harold Ingram #
 Isciences, L.L.C.
 John and Gretchen Jackson
 Hank and Karen Jallo
 Mark and Linda Johnson
 Mattias Jonsson and Johanna
 Eriksson
 Don and Sue Kaul
 David H. and Gretchen Kennard
 John Kennard and Debbi Carmody
 Paul and Dana Kissner
 Jean and Arnold Kluge
 Barbara and Ronald Kramer
 Mary L. Kramer
in honor of Ken Fischer
 Gary and Barbara Krenz
 Jane Fryman Laird
 Joan and Melvyn Levitsky
 Jennifer Lewis and Marc Bernstein
 James and Jean Libs
 Marty and Marilyn Lindenauer
 Rod and Robin Little
 Joan Lowenstein and Jonathan Trobe
 Brigitte Maassen
 William and Jutta Malm
 Melvin and Jean Manis
 Susan Martin
 Judythe and Roger Maugh
 Martha Mayo and Irwin Goldstein
 Margaret and Harris McClamroch
 Jordan McClellan
 Bill and Ginny McKeachie
 Semyon and Terry Meerkov
 Bernice and Herman Merte
 Fei Fei and John Metzler
 Lee Meyer
 Dr. James M. Miller and Dr. Rebecca
 H. Lehto
 Lewis and Kara Morgenstern
 Lisa and Steve Morris
 Brian and Jacqueline Morton
 Drs. Louis and Julie Jaffee Nagel
 John and Ann Nicklas
 Marylen S. Oberman
 Elizabeth Ong
 M. Joseph and Zoe Pearson
 Jean and Jack Peirce
 Wesen and William Peterson
 Diana and Bill Pratt
 Wallace and Barbara Prince
 Cynthia and Cass Radecki

Peter Raitlon and Rebecca Scott
 Jessica C. Roberts, PhD #
 Doug and Nancy Roosa
 David Lampe and Susan Rosegrant
 Stephanie Rosenbaum
 Richard and Edie Rosenfeld
 Nancy Rugani
 Linda and Leonard Sahn
 Mariam Sandweiss
in memory of Leon Cohen
 Ashish and Norma Sarkar
 Christopher Kendall and Susan
 Schilperoort
 David Schmidt and Jane Myers
 Ann and Tom Schriber
 Matthew Shapiro and Susan Garetz
 Bruce M. Siegan
 Edward and Kathy Silver
 Sue and Don Sinta
 Cynthia Sorensen and Henry
 Rueter
 Linda Spector and Peter Jacobson
 Gretta Spier and Jonathan Rubin
 Leslie Stainton and Steven Whiting
 Allan and Marcia Stillwagon
 Sandy Talbott and Mark Lindley
 Stephanie Teasley and Thomas
 Finholt
 Doris H. Terwilliger
 Claire Turcotte
 Joyce Urba and David Kinsella
 Erika Nelson and David Wagener
 Elizabeth A. and David C. Walker
 Arthur and Renata Wasserman
 Richard and Madelon Weber #
 Deborah Webster and George
 Miller
 Edward and Colleen Weiss
 Lyndon Welch
in memory of Angela Welch
 James B. White and Mary F. White
 Kathy White #
 Iris and Fred Whitehouse
 Diane Widzinski
 Thomas K. Wilson
 Dr. Robert Winfield
 Lawrence and Mary Wise
 Dr. and Mrs. Robert Wolf
 Drs. Margo and Douglas Woll
 Mary Jean and John Yablonky
 Richard and Kathryn Yarmain

ASSOCIATES (\$250 – \$499)

Judith Abrams
 Jan and Sassa Akervall
 Gordon and Carol Allardyce
 James and Catherine Allen
 Catherine M. Andrea
 Ann Arbor Area Community
 Foundation
 Anonymous
 Bernard and Raquel Agranoff
 Dr. Diane M. Agresta
 Helen and David Aminoff
 Ralph and Elaine Anthony
 Lisa and Scott Armstrong
 Eric and Nancy Aupperle
 Rosemary and John Austgen
 Robert and Mary Baird
 Pat Bantle
 Barbara Barclay

Frank and Lindsay Tyas Bateman
 Kenneth and Eileen Behmer
 Christina Bellows and Joe Alberts
 Helen V. Berg
 Cory and Gahl Berkooz
 Dan Berland and Lisa Jevens
 Barbara and Sheldon Berry
 Maria Beye
 Mary E. Black
 Judy Bobrow and Jon Desenberg
 Mr. Mark D. Bomia
 Joel Bregman and Elaine Pomeranz
 Les and Bonnie Bricker
 Gloria D. Brooks
 Morton B. and Raya Brown
 Tom and Lori Buiteweg
 Jonathan and Trudy Bulkley
 Jim and Cyndi Burnstein
 Tony and Jane Burton
 Jenny and Jim Carpenter
 Margaret W. (Peggy) Carroll
 Dennis J. Carter
 Susan Carter
 Albert C. Cattell
 Samuel and Roberta Chappell
 Joan and Mark Chesler
 Laurence Cheung
 Hilary Cohen
 Wayne and Melinda Colquitt
 Dr. Lisa D. Cook
 Katharine Cosovich
 Margaret Cottrill and Jon Wolfson
 Susan Bozell Craig
 Jean Cunningham and Fawwaz
 Ulabay
 Marylee Dalton and Lynn
 Drickamer
 Connie D'Amato
 Sunil and Merial Das
 Art and Lyn Powrie Davidge #
*in memory of Gwen and
 Emerson Powrie*
 Ed and Ellie Davidson
 John Debbink
 David L. DeBruyn
 Margaret Delaney
 Kenneth Wisinski and Linda
 Dintenfass
 Paul and Annemarie Dolan
 Robert Donia
 Elizabeth Duell
 Don and Kathy Duquette
 Swati Dutta
 Richard and Myrna Edgar
 Morgan and Sally Edwards
 Charles and Julie Ellis
 Thomas Fabiszewski
 Kay Felt
 Jeff Fessler and Sue Cutler
 Herschel and Adrienne Fink
 Harold and Billie Fischer
 Martha Fischer and William Lutes
in honor of Kenneth C. Fischer
 Norman and Jeanne Fischer
in memory of Gerald B. Fischer
 Catherine Fischer
in memory of Gerald B. Fischer
 Frederick and Kathleen Fletcher
 Peter C. Flintoft
 Jessica Fogel and Lawrence Weiner
 Lucia and Doug Freeth

Susan Froelich and Richard Ingram
in memory of Eugene O. Ingram
 Philip and Renée Woodten Frost
 Enid Galler
 Charles and Janet Garvin
 Sandra Gast and Greg Kolecki
 Bob and Julie Gates
 Michael Gatti and Lisa Murray
 Prof. Beth Genne and Prof. Allan
 Gibbard
 Chris Genteel and Dara Moses
 J. Martin Gillespie and Tara Gillespie
 Thea and Elliot Glicksman
 Google Inc.
 Mr. and Mrs. Charles and Janet
 Goss #
 Marla Gousseff
 Michael L. Gowing
 Jenny Graf
 Jerry M. and Mary K. Gray
 Richard and Linda Greene
 Linda and Roger Grekin
 Carl Guldborg
 George and Mary Haddad
 Drs. Erik and Dina Hanby
 Susan R. Harris
 J. Lawrence Henkel and Jacqueline
 Stearns
 Therese and Alfred Hero
 Lorna and Mark Hildebrandt
 Perry Irish Hodgson
 Timothy Hofer and Valerie Kivelson
 Daniel Hoffman
 Jane and Thomas Holland
 James S. and Wendy Fisher House #
 Gaye Humphrey
 Elizabeth Jahn
 Joachim Janecke
 Mr. Lawrence and Mrs. Ruth Jones
 Janet and Jerry Joseph
 Don and Nancy Kaegi
 Monica and Fritz Kaenzig
 Angela Kane
 Mark and Carol Kaplan
 E. and M. Katz
 Fred and Susan Kellam
 Charles Kelly
 James and Patricia Kennedy
 Nancy Keppelman and Michael
 Smerza
 Dan and Freddi Kilburn
 Laurence King and Robyn Frey-
 King
 Web and Betty Kirksey
 Michael Koen
 Rosalie and Ron Koenig
 Joseph and Marilyn Kokoszka
 Dr. and Mrs. Melvyn Korobkin
 Bert and Geraldine Kruse
 Frank and Kim La Marca
 Donald John Lachowicz
 Tim and Kathy Laing
 Linda Langer
 Anne-Marie and Anthony La Rocca
 John and Theresa Lee
 James Leija and Aric Knuth
 Anne and Harvey Leo
 John Lesko and Suzanne
 Schluederberg
 Rachelle Lesko
 Gloria Kitto Lewis

Jacqueline Lewis
in honor of Ken Fischer
 Barbara Levine
 Michael and Debra Lisull
 Dr. Len and Betty Lofstrom
 Julie M. Loftin
 Barbara and Michael Lott
 Bruce Loughry
 Martin and Jane Maehr
 Susan C. Guszynski and Gregory F. Mazure
 Charles McCaghy
 Joanna McNamara and Mel Guyer
 Frances McSparran
 Marilyn Meeker
 Gerlinda S. Melchiori
 Warren and Hilda Merchant
 Dennis J. Merrick and Judith H. Mac
 Louise Miller
 Gene and Lois Miller
 Dr. and Mrs. Josef Miller
 John and Sally Mitani
 Candy Mitchell
 Arnold and Gail Morawa
 Trevor Mudge and Janet Van Valkenburg
 Gavin Eadie and Barbara Murphy
 Thomas J. Nelson
 Gayl and Kay Ness
 Marc Neuberger
 Richard and Susan Nisbett
 Eugene and Beth Nissen
 Laura Nitzberg
 Christer and Outi Nordman
 Arthur S. Nusbaum
 Constance Osler
 Mohammad and J. Elizabeth Othman
 Karen Pancost
 William and Hedda Panzer
 Donna D. Park
 Karen Park and John Beranek
 Lisa Payne
 Sumer Pek and Mickey Katz-Pek
 Melvin and Sharon Peters
 Margaret and Jack Petersen
in honor of Jerry Blackstone
 Sara Jane Peth
 Marianne Udow-Phillips and Bill Phillips

Donald and Evonne Plantinga
 Joyce Plummer
 Thomas S. Porter
 Nancy Powell
 Anne Preston #
 Karen and Berislav Primorac
 Quest Productions
 Floretta Reynolds
 Guy and Kathy Rich
 Douglas and Robin Richstone
 Dr. and Mrs. Jonathan Rodgers
 Dr. Stephen Rosenblum and Dr. Rosalyn Sarver
 Rosemarie Haag Rowney
 Carol Rugg and Richard Montmorency
 Jay and Sunny Sackett
 Eugene Saenger, Jr.
 Amy Saldinger and Robert Axelrod
 Irv and Trudy Salmeen
in honor of Pat Chapman
 Michael and Kimm Sarosi
 Albert J. and Jane L. Sayed
 Judith Scanlon
 Jochen and Helga Schacht
 Mark Schlisel
 Betina Schlossberg
 Regan Knapp and John Scudder
 Larry and Bev Seiford
 Suzanne Selig
 Ms. Harriet Selin
 Elvera Shappirio
 Laurence Shear
 William and Christina Shell
 Patrick and Carol Sherry
 George and Gladys Shirley
 Jean and Thomas Shope
 Andrew and Emily Shuman
 Nina Silbergleit
 Terry M. Silver
 Robert and Elaine Sims
 Scott and Joan Singer
 Loretta Skewes
 Carl and Jari Smith #
 Dr. and Mrs. Gregory Smith
 Robert W. Smith
 Greg Grieco and Sidonie Smith
 David and Renate Smith
 Hanna Song and Peter Toogood

Becki Spangler and Peyton Bland
 Doris and Larry Sperling
in memory of David Klein
 Jim Spevak
 Jeff Spindler
 Paul and Judith Spradlin
 Daniel and Susan Stepek
 James L. Stoddard
 Cynthia Straub
 Brian and Lee Talbot
 May Ling Tang
 Carolyn and Frank Tarzia
 Eva Taylor
 Stephan Taylor and Elizabeth Stumbo
 Denise Thal and David Scobey
 Nigel and Jane Thompson
 John G. Topliss
 Donald Tujaka
 Alvan and Katharine Uhle
 Karla and Hugo Vandersypen
 Michael Van Tassel
 James and Barbara Varani
 Virginia O. Vass
 Brad L. Vincent
 Jack Wagoner, M.D.
 Mary Walker and David Linden
 Charles R. and Barbara H. Wallgren #
 Bob and Liina Wallin
 Jo Ann Ward
 Alan and Jean Weamer
 MaryLinda and Larry Webster
 Mr. and Mrs. Richard Weiermiller
 Jack and Carol Weigel
 Lisa and Steve Weiss
 Mary Ann Whipple
 Nancy P. Williams
in honor of Katie Stebbins
 Robert J. and Anne Marie Willis
 John and Pat Wilson
 Beth and I. W. Winsten
 Stuart and Nancy Winston #
 Steven and Helen Woghlin
 Charlotte A. Wolfe
 Frances Wright #
 Gail and David Zuk

*Due to space restraints, tribute gifts of \$1-\$249 will be recognized in the online donor list at ums.org.

Ad Index

- | | | | |
|----|---|-----|---|
| 2 | Ann Arbor Area Community Foundation | 26 | Michigan Psychoanalytic Institute and Society |
| 34 | Ann Arbor Symphony Orchestra | 28 | Michigan Radio |
| 5 | Center for Plastic and Reconstructive Surgery | 28 | Miller, Canfield, Paddock and Stone, P.L.C. |
| 6 | Charles Reinhart Co. Realtors | 32 | Red Hawk and Revive + Replenish |
| 6 | Cottage Inn | 30 | Retirement Income Solutions |
| 6 | Donaldson & Guenther | 22 | Silver Maples |
| 10 | Dykema Gossett | 32 | Smith Haughey Rice & Roegge |
| 10 | Gilmore Keyboard Festival | 4 | U-M Alumni Association |
| 22 | Heinz C. Prechter Bipolar Research Fund | IBC | WEMU |
| 21 | Honigman Miller Schwartz and Cohn LLP | 32 | WGTE |
| 10 | Iris Dry Cleaners | 30 | WKAR |
| 26 | Jaffe, Raitt, Heuer & Weiss PC | 33 | Zell Visiting Writers Series |
| 26 | Knight's DOWNTOWN | | |

IBC = Inside back cover



VICTORS FOR
MICHIGAN

Be a victor for
excellence



Invest in the future of our community
by supporting UMS today.

Please send your gift to:
UMS Development
Burton Memorial Tower
881 North University Avenue
Ann Arbor, MI 48109-1011

or call 734.764.8489 or go to ums.org/support

National Public Radio mixed with local public knowledge.

|
—
89.1

Public radio from Eastern Michigan University

npr + jazz + blues + local news wemu.org

Jazz is alive. And this is its house number.

|
—
89.1

Public radio from Eastern Michigan University

npr + jazz + blues + local news wemu.org

What crosstown rivalry?

|
—
89.1

Proud to be UMS's media partner for the 2015-16 season

wemu.org