

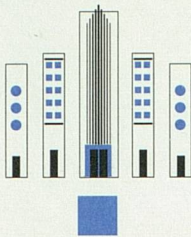
# PUTTIN' ON THE RITZ

NEW DIRECTIONS – NEW HEIGHTS



SUNDAY 24 SEPTEMBER 2000

UNIVERSITY MUSICAL SOCIETY



UNIVERSITY MUSICAL SOCIETY  
SEASON OPENING GALA DINNER

**SUNDAY 24 SEPTEMBER 2000**

6:30 PM

**DINNER**

THE MICHIGAN LEAGUE BALLROOM



7:30 PM

CABARET PERFORMANCE

**MARY CLEERE HARAN**



**MENU**

**APPETIZER**

VIDALIA ONION CONFIT

**ENTRÉE**

BAKED CHICKEN WITH CAPERBERRY GREMOLATA  
& GORGONZOLA POLENTA\*

**VEGETARIAN ENTRÉE**

SPINACH & ARTICHOKE PIE WITH TOMATO COULIS

**SALAD**

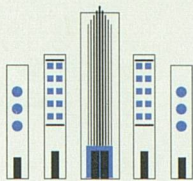
ASPARAGUS CITRUS SALAD\*

**DESSERT**

LEMON BUTTERMILK PUDDING CAKE  
WITH RASPBERRY COULIS

\* A recipe from the UMS cookbook *BRAVO!*





UNIVERSITY MUSICAL SOCIETY  
CABARET PERFORMANCE



Mary Cleere Haran, Cabaret Singer  
with Sir Richard Rodney Bennett, Piano  
Linc Milliman, Bass

THE MEMORY OF ALL THAT: GERSHWIN AND HIS SONGS

One of the most renowned singers of "The Great American Songbook," **Mary Cleere Haran** has garnered rave reviews from audiences and critics alike for her witty, sophisticated cabaret performances. The San Francisco native, who has been compared to Ella Fitzgerald, Peggy Lee, Doris Day and Rosemary Clooney, evokes the charm, style and wit of 1930s movie stars like Myrna Low, Irene Dunne, Jean Arthur and Carole Lombard. She has performed at some of the most prominent venues in the country, including Lincoln Center, Rainbow & Stars, Michael's Pub, The Ballroom, The Russian Tea Room, The Oak Room at New York's Algonquin Hotel, and The Cinegrille in Los Angeles.

Ms. Haran and acclaimed musical director Sir Richard Rodney Bennett appeared last year at Joe's Pub at New York's Public Theater as part of the Fred Astaire Centennial Celebration and joined forces once again in *Gershwin: The Memory of All That*, a dazzling salute to the legendary composer at the World Financial Center in New York, London's Pizza on the Park and at numerous venues throughout the US.

It was Haran's love affair with classic movies of the 1930s and 1940s, most notably the black and white Warner Bros. films bursting with brassy, sassy Gold Diggers, Jazz Age Gershwin music and spirited Harry Warren-Al Dubin tunes, that sparked her love affair with American popular song. She cites Judy Garland, Ella Fitzgerald and Peggy Lee as primary sources of inspiration, but Hollywood's Golden Age has made an indelible impression on Ms. Haran's singing. Given her affinity for these silver screen gems, it's no surprise that Stephen Holden of *The New York Times* declared that Ms. Haran "sounds like a mid-1940s Doris Day,

*continued on back panel*

The evening's entertainment is made possible through the generous support of



looks like Myrna Loy crossed with Rita Hayworth and writes her own brilliant patter in which she sounds like a warm-hearted contemporary version of Dorothy Parker."

Although Ms. Haran's first love is club singing, she also boasts an impressive list of theater credits. She made her Broadway debut in *The 1940s Radio Hour* and appeared off-Broadway in *Manhattan Music*, *Swingtime Canteen* and *Heebie-Jeebies*.

In addition to her illustrious performing career, Ms. Haran is a respected writer and researcher who has brought her talents to numerous PBS specials, including *Remembering Bing: Irving Berlin's America*; *When We Were Young: The Lives of Child Movie Stars*; *Satchmo*, a documentary about Louis Armstrong; and *Doris Day: A Sentimental Journey*. She was one of a select group asked to write on Sinatra's death in *The New York Times*. She is currently writing a show about the stars, screenwriters and directors of Hollywood's 1930s screwball comedies.

**Richard Rodney Bennett** is a composer and singer-pianist. His classical works include three symphonies, three full-length operas, and concertos for a full range of orchestral instruments. He has written the scores for over fifty films with the most recent being *Enchanted April* and *Four Weddings and a Funeral*.

As a pianist and arranger he has worked with Cleo Laine, Chris Connor, Mark Murphy, Ann Hampton Callaway, Mary Cleere Haran, Maria Ewing and Carol Sloane. As a solo jazz pianist and singer he has appeared frequently in American clubs and has given hundreds of concerts around the globe.

*Tonight's performance marks Mary Cleere Haran's, Sir Richard Rodney Bennett's, and Linc Milliman's debuts under UMS auspices.*



UNIVERSITY MUSICAL SOCIETY  
2000 ADVISORY COMMITTEE

Dody Viola, Chair  
Robert Morris, Vice-Chair  
Sara Frank, Secretary/Treasurer

Martha Ause  
Barbara Bach  
Lois Baru  
Kathleen Benton  
Victoria Buckler  
Barbara Busch\*  
Phil Cole  
Patrick Conlin  
Elly Rose Cooper  
Nita Cox  
Mary Ann Daane  
Norma Davis  
Sally Stegeman DiCarlo  
Lori Director  
Betty Edman  
Michael Endres  
Nancy Ferrario  
Penny Fischer  
Anne Glendon  
Maryanna Graves  
Linda Greene  
Karen Gundersen\*  
Jadon Hartsuff\*  
Nina E. Hauser  
Debbie Herbert

Mercy Kasle  
Steve Kasle  
Anne Kloack  
Maxine Larrouy  
Beth LaVoie  
Stephanie Lord  
Esther Martin  
Ingrid Merikoski  
Ernest Merlanti  
Jeanne Merlanti  
Candice Mitchell  
Nancy Niehoff  
Mary Pittman  
Ieva Rasmussen  
Penny Schreiber  
Sue Schroeder\*  
Meg Kennedy Shaw  
Morrine Silverman  
Maria Simonte  
Loretta Skewes  
Cynny Spencer  
Louise Townley  
Bryan Ungard  
Suzette Ungard  
Wendy Woods

\* Season Opening Dinner Committee Member