

UNIVERSITY MUSICAL SOCIETY

F. W. KELSEY, President

ALBERT LOCKWOOD, Acting Director of the University School of Music
EARL V. MOORE, Acting Director of the University Choral Union

CHORAL UNION SERIES, 1922-1923

FORTY-FOURTH SEASON

FIRST CONCERT

No. CCCLXXX COMPLETE SERIES

MISCHA ELMAN, Violinist

JOSEF BONIME, Accompanist

TUESDAY, OCTOBER 24, 1922, AT EIGHT O'CLOCK
HILL AUDITORIUM, ANN ARBOR, MICHIGAN

PROGRAM

SONATA, D MAJOR	<i>Haendel</i>
Adagio	
Allegro	
Larghetto	
Allegro	
SYMPHONIE ESPAGNOLE	<i>Lalo</i>
Allegro	
Andante	
Rondo	
SUITE, "VIEL LAERMEN UM NICHTS," Op. II	<i>Korngold</i>
Maid in Bridal Array	
Grotesque Funeral	
Garden Scene	
Hornpipe	
NOCTURNE	<i>Chopin-Wilhelmj</i>
JOTA	<i>Sarasate</i>

THE PIANO USED IS A STEINWAY

MANAGEMENT: S. HUOK, NEW YORK



OSSIP GABRILOWITSCH

— FOURTH ANNU

Extra Col

SERIES

FIVE STUPENDOUS PE

By World Famous Soloists and Michigan's Gr

THE DETROIT SYMPHON

OCT. 30—INA BOURSKAYA, Russian Soprano, Soloist with The Detroit Sym

NOV. 20—RAOUL VIDAS, French Violinist, Soloist with The Detroit
ing, in a program of popular works.

DEC. 4—ALFRED CORTOT, French Pianist "A Second Paderewski" in

JAN. 15—KATHRYN MEISLE, American Contralto, Soloist with The
Conducting, in a program of popular

FEB. 19—MAURICE DUMESNIL, French Pianist, Soloist with The Detroit Sy

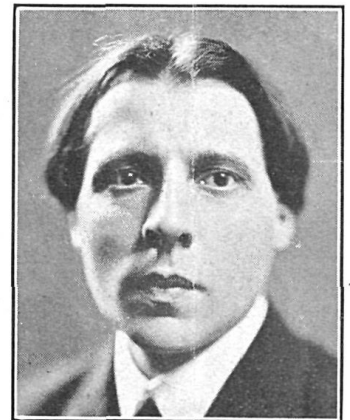
Good Season Tickets Still Available at \$2.00 - \$3.00 - \$4.00 - \$5



INA BOURSKAYA



RAOUL VIDAS



ALFRED CORTOT

FOURTH ANNUAL —

Concert

SERIES

DEPENDOUS PROGRAMS

and Michigan's Greatest Musical Organization

SYMPHONY ORCHESTRA



VICTOR KOLAR

Violin Soloist with The Detroit Symphony Orchestra, Ossip Gabrilowitsch, Conductor.

Piano Soloist with The Detroit Symphony Orchestra, Victor Kolar, Conductor.
Program of popular works.

"A Second Paderewski" in a Piano Recital.

Contralto Soloist with The Detroit Symphony Orchestra, Victor Kolar, Conductor.
Singing in a program of popular works.

Violinist Soloist with The Detroit Symphony Orchestra, Ossip Gabrilowitsch Conductor.

Tickets available at \$2.00 - \$3.00 - \$4.00 - \$5.00, at University School of Music

CHARLES A. SINK, Secretary



ALFRED CORTOT



MAURICE DUMESNIL



KATHRYN MEISLE

ANNOUNCEMENTS

MARY GARDEN will appear on TUESDAY, DECEMBER 5, instead of on the date otherwise announced. This change was necessitated by a delay in her return from Europe.

THE DETROIT SYMPHONY ORCHESTRA, OSSIP GABRILO-WITSCH, Conductor, INA BOURSKAYA, Russian Operatic Soprano, will open the EXTRA CONCERT SERIES, October 30.

SAMUEL P. LOCKWOOD will lecture on "Orchestral Instruments," under the auspices of the MATINEE MUSICAL, in Pattengill Auditorium, Thursday, October 26, at 4:15 o'clock. No admission charge.

THE FIRST FACULTY CONCERT will take place in Hill Auditorium, Sunday, November 5, at 4:15 o'clock. No admission charge.

TWILIGHT ORGAN RECITALS will take place regularly every Wednesday at 4:15 o'clock. They will be omitted on account of conflicts in dates on October 25 and November 22.

THE UNIVERSITY SCHOOL OF MUSIC offers instruction in all branches of music. For catalogue call at office, Maynard Street.

THE UNIVERSITY MUSICAL SOCIETY is organized under an Act of the State of Michigan providing for the incorporation of associations not for pecuniary profit. Its purpose is "to cultivate the public taste for music." All fees are placed at the lowest possible point compatible with sound business principles, the financial side serving but as a means to an educational and artistic end, a fact duly recognized by the Treasury Department of the United States by exempting from war tax admissions to concerts given under its auspices, and by the United States Postoffice Department in admitting its publications to second-class privileges.

TRAFFIC REGULATION.—By order of the Police Department, on the nights of Concerts vehicles of all kinds will be prohibited on North University Avenue between Thayer and Ingalls Streets; taxi-cabs must park on the west side of Thayer Street, facing south between North University Avenue and Washington Street; private autos may be parked on Ingalls and Washington Streets. Persons on foot are requested to refrain from leaving from the taxi-cab entrance at the Thayer Street side of the Auditorium.

LOST ARTICLES should be enquired for at the office of Shirley W. Smith, Secretary of the University, in University Hall, where articles found should be left.