

1 3 7 T H S E A S O N

# 15





U M S . O R G

U M S L O B B Y . O R G

U M S R E W I N D . O R G

# U M S L O B B Y



Did you like it? Did it move you? Did it change you?  
Did it disappoint? Tell us what you think at [umslobby.org](http://umslobby.org)  
or any of our social media spaces.

# Be Present

UMS unleashes the power of the performing arts in order to engage, educate, transform, and connect individuals with uncommon experiences. The Fall 2015 season is full of exceptional, world-class, and truly inspiring performances.

Welcome to the UMS experience. We're glad you're present.  
Enjoy the performance.





When you attend a UMS performance,  
you're part of a larger equation:

nonprofit **ARTS**  
**+** **CULTURE**  
**=** **ECONOMIC**  
**PROSPERITY**  
in the greater Ann Arbor Area  
**\$100 million annually**

Together, we invest in our local community's vibrancy.



**Ann Arbor Area**  
Community Foundation

[aaacf.org](http://aaacf.org)



**Welcome** to this UMS performance. We're delighted that you're joining us in our 137th season, one of the most exciting, diverse, and engaging in our history. In addition to what you'll see on stage, UMS has a robust education program serving people of all ages and also oversees the 175-voice Grammy Award-winning UMS Choral Union. We invite you to learn more about all of our programs at [ums.org](http://ums.org) and to become engaged with UMS, whether it's by making a gift to our campaign, joining us at the Ann Arbor Y for a community dance class with a visiting dance company, or buying a ticket to a performance. We're always eager to hear from you, too! Join the conversation and share your thoughts after a performance at [umslobby.org](http://umslobby.org). If you have any comments, questions, or concerns, please be in touch with UMS President Ken Fischer at 734.647.1174 or at [kenfisch@umich.edu](mailto:kenfisch@umich.edu). We hope to see you again soon.



A handwritten signature in black ink that reads "Mark Schlissel".

**MARK  
SCHLISSSEL**

*President,  
University of Michigan*



A handwritten signature in black ink that reads "Ken Fischer".

**KENNETH C.  
FISCHER**

*UMS President*



A handwritten signature in black ink that reads "Stephen Forrest".

**STEPHEN R.  
FORREST**

*Chair,  
UMS Board of Directors*

For those who leave Michigan, but for whom Michigan never leaves.



This is where you belong. Join today at [umalumni.com](http://umalumni.com)



To reveal the age  
you feel,  
stay on  
your toes.

# Table of Contents

6	2015-16 Season Calendar
9	Education
11	History
12	Leadership Donors
14	Corporate Champions
20	Foundation, Government, & University Support
23	People
31	Generous Donors
40	Ad Index



CENTER FOR PLASTIC &  
RECONSTRUCTIVE SURGERY

face ♣ body ♣ breast ♣ skin

Paul Izenberg, MD | David Hing, MD

Richard Beil, MD | Daniel Sherick, MD

Rachel Streu, MD

Art and medicine  
performing in concert

[www.cprs-aa.com](http://www.cprs-aa.com) | 734.712.2323

# 2015-16 Season Calendar

## AUGUST

8/30  
NT Live in HD:  
Arthur Miller's  
*A View from the Bridge*

## SEPTEMBER

9/11  
UMS Season Opener!  
My Brightest Diamond  
with the Detroit Party  
Marching Band and  
special guest Shigeto

9/16  
NT Live in HD: George  
Bernard Shaw's  
*Man and Superman*

9/17  
Audra McDonald

9/27  
Sphinx Virtuosi  
with the Catalyst Quartet  
and Gabriela Lena Frank,  
piano

## OCTOBER

10/3  
L-E-V

10/7  
The Gloaming

10/9-11  
New York Philharmonic  
Alan Gilbert, conductor

10/14-17  
*Antigone* by Sophokles  
Starring Juliette Binoche  
Directed by Ivo van Hove

10/18  
RSC Live in HD:  
Shakespeare's *Othello*

10/21  
Abdullah Ibrahim &  
Ekaya

10/23-24  
Sankai Juku

10/27  
Hubbard Street Dance  
Chicago

10/29  
Chicago Symphony  
Orchestra  
Riccardo Muti, conductor

10/30  
Tenebrae

## NOVEMBER

11/6  
Danish String Quartet

11/8  
Chucho Valdés:  
*Irakere 40*

11/14  
Yousouf N'Dour and  
Super Étoile de Dakar

11/15  
NT Live in HD:  
Shakespeare's *Hamlet*

11/20  
Leif Ove Andsnes, piano

## DECEMBER

12/2  
Takács Quartet

12/5-6  
*Handel's Messiah*  
UMS Choral Union  
Ann Arbor Symphony  
Scott Hanoian, conductor

12/13  
RSC Live in HD:  
Shakespeare's *Henry V*

12/17-1/3  
*A Christmas Carol*  
National Theatre of  
Scotland  
Directed by Graham  
McLaren

## JANUARY

1/8  
*What's in a Song?*  
A song recital evening  
curated by Martin Katz

1/10  
Jamie Barton,  
mezzo-soprano

1/11  
Royal Philharmonic  
Orchestra  
Pinchas Zukerman,  
conductor and violin

1/20  
Jazz at Lincoln Center  
Orchestra with  
Wynton Marsalis



1/21-23

Young Jean Lee's  
Theater Company  
*Untitled Feminist Show &  
Straight White Men*

1/22

Chamber Music Society  
of Lincoln Center

1/27

Ms. Lisa Fischer and  
Grand Baton

## FEBRUARY

2/2

Tanya Tagaq in concert  
with *Nanook of the North*

2/5

Taylor Mac  
*A 24-Decade History  
of Popular Music:  
1960s-1980s*

2/6

Igor Levit, piano

2/13

Camille A. Brown &  
Dancers

2/14

UMS Choral Union and  
Organ  
*Love is Strong as Death*  
Scott Hanoian, conductor

2/16-20

Sir András Schiff, piano  
*The Last Sonatas  
of Haydn, Mozart,  
Beethoven, and Schubert*

2/19

*The Triplets of Belleville*  
Benoit Charest,  
composer-conductor

## MARCH

3/5

*The Chieftains*

3/11-12

*Nufonia Must Fall*  
Kid Koala, DJ, producer,  
and graphic novelist

3/15

*Apollo's Fire & Apollo's  
Singers*  
*Bach's St. John Passion*

3/19

*Montreal Symphony*  
Kent Nagano, conductor  
Daniil Trifonov, piano

3/26

Gil Shaham, violin  
with original films by  
David Michalek  
*Bach Six Solos*

3/31-4/3

American Ballet Theatre  
*The Sleeping Beauty*

## APRIL

4/1

Mariachi Vargas de  
Tecalitlán

4/8

Jerusalem String Quartet

4/14

Mnozil Brass

4/15

*Zafir: Musical Winds  
from North Africa to  
Andalucía*  
Simon Shaheen, music  
director

4/16

Bavarian Radio Orchestra  
Mariss Jansons, conductor  
Leonidas Kavakos, violin

4/23

The Bad Plus  
Joshua Redman

# Reinhart

ReinhartRealtors.com

Proudly Supports  
The University  
Musical Society

734-747-7888

Charles Reinhart Company Realtors 

The real estate leader in Ann Arbor for over 40 years



THE ORIGINAL  
**Cottage Inn**

Ann Arbor's Original Pizza Spot. Stop in after the show with your ticket stub to receive a free cheesecake appetizer!

512 E. William Ann Arbor MI 48104



## Dentistry as a Fine Art

**Unparalleled Attention to Detail**  
We blend creativity and expertise to create beautiful, natural-looking smiles.

Photography © Kirk Donaldson

Sedation | Implants | Cosmetics | Complex Restoration | Sleep Apnea

 **DONALDSON  
& GUENTHER**

734.971.3450

[dgdent.com](http://dgdent.com)

3100 Eisenhower, Ann Arbor MI 48108

# Education

EDUCATIONAL  
EXPERIENCES  
FOR  
EVERYONE



At UMS, our mission goes beyond performance. We want you to create, to explore, and to experience extraordinary new things. That is why we offer a fascinating lineup of artist Q&As, conversations, workshops, and interactive experiences, each designed to bring you closer to performance and creation, and to expand your comfort zone. If you want to experience something new, different, highly engaging, and eye-opening, we invite you to participate in events inside and outside of the theater.



[UMS.ORG/LEARN](https://ums.org/learn)

Photo: You Can Dance with Abraham.in.Motion in March 2015. Photographer: Peter Smith Photography.



# Bravo!

The law firm of Dykema  
applauds the University  
Musical Society for bringing  
the spirit of harmony to our  
community with one sound  
performance after another.

Delivering exceptional  
service to individuals and  
businesses since 1926.

## DYKEMA

[www.dykema.com](http://www.dykema.com)



**See, touch and smell the  
Green Earth difference.  
Non-toxic**

An environmentally friendly new  
way of dry cleaning.



2268 S. Main St.

Located by Busch's on the corner of  
S. Main St. and Ann Arbor-Saline Rd.

734-998-1245

[www.irisdrycleaners.com](http://www.irisdrycleaners.com)

Daniil Trifonov, 2014, Gilmore Keyboard Festival © Chris McGuire



## Pedal to the metal.

# GILMORE KEYBOARD FESTIVAL



APRIL 29 TO MAY 14, 2016  
[THEGILMORE.ORG](http://THEGILMORE.ORG)

# Tradition Builds the Future



In our 137th season, we continue to showcase traditional performances alongside contemporary artists for an offering that is unlike anything available in the Midwest. UMS grew from a group of local members of the University and townspeople in the 1870s who gathered together for the study of Handel's *Messiah*. Led by Professor Henry Simmons Frieze and conducted by Professor Calvin Cady, the group assumed the name The Choral Union. Many Choral Union members were also affiliated with the University, and the University Musical Society was established soon after in December 1880.

Since that first season, UMS has expanded greatly and now presents the very best from a wide spectrum of the performing arts: internationally renowned recitalists and orchestras, dance and chamber ensembles, jazz and global music performers, and contemporary stagework and classical theater. Through educational programming, the commissioning of new works, youth programs, artist residencies, and collaborative projects, we continue to strengthen our reputation for artistic distinction and innovation.

Photo: Hill Auditorium in 1928.

# Leadership Donors

*We recognize the donors who have made or completed multi-year campaign commitments of \$100,000 or more during the last year. In addition, we recognize the individuals who have committed \$50,000 or more in support of the 2015–16 season.*



**BERTRAM ASKWITH (1911-2015)  
PATTI ASKWITH KENNER**

“The arts have made a significant difference in my life and my daughter’s life. I want every U-M student to have the opportunity to experience the impact of the performing arts at UMS. This is why I am offering every first and second year student one free ticket – Bert’s Ticket – to introduce them to a cultural experience at Michigan.”



**DALLAS AND SHARON DORT**

“It could almost be said that we chose to move to Ann Arbor post-career because of UMS. Who wouldn’t want to live in a city that can attract such talent, and fill a 3,500-seat hall with so many enthusiastic audiences? Now, we enjoy each season all the more because, as donors, we’re an active part of UMS. What a privilege!”



**STEVE AND ROS FORREST**

“As students, we benefited from low-cost student tickets, fostering a lifelong love of the performing arts. Our donation will help to ensure that affordable tickets will be available to today’s students.”



**ILENE FORSYTH**

“I want to help chamber music flourish in Ann Arbor. My support for the series began with its inception in 1963 and I continue to believe that these concerts help nurture our intellectual life as they stimulate and refresh us.”



### MAXINE AND STUART FRANKEL

"We are delighted to partner with UMS for the fifth year of the Renegade Series. Supporting Renegade programming allows UMS to provide experiences for the curious, adventurous, and experimental audience member — allowing us to challenge our existing beliefs and push our own boundaries."



### EUGENE AND EMILY GRANT

"We are proud to support UMS and the many programs they offer University students. It is great to know that students will have access to the greatest performing artists from around the world. The arts are an important part of a Michigan education."



### RICHARD AND SUSAN GUTOW

"We enjoy classical and contemporary music, theater, and dance, and feel privileged to add our endowment to that of others to help ensure that UMS continues to present adventuresome performances to the university and Southeast Michigan communities."



### PHIL AND KATHY POWER

"Thousands and thousands of lives have been made richer and more profoundly aware through the music, theater, and dance offerings of UMS. It's hard to imagine another institution that has had such an enormous impact on so many over such a long time. UMS's work is enormously valuable and deserves generous support from anybody who believes in the liberating power of the performing arts."

# Corporate Champions

We thank the following businesses for their commitments of \$5,000 or more for the 2015–16 season.



## **DOUGLASS R. FOX**

*President, Ann Arbor Automotive*

“We at Ann Arbor Automotive are pleased to support the artistic variety and program excellence given to us by UMS.”



## **TIMOTHY G. MARSHALL**

*President and CEO, Bank of Ann Arbor*

“We take seriously our role as a community bank. While there have been sizable cuts in arts funding over the years by both the private and public sectors, Bank of Ann Arbor is delighted to continue to sponsor UMS year after year. We are firm believers that the arts are vital to the vibrancy of our cities, both culturally and economically.”



## **LARRY BRYANT**

*Ann Arbor Region President, Comerica Bank*

“As a company with a long-standing commitment to diversity and our community, Comerica is proud to continue its support of UMS. We salute UMS on its efforts to enrich our community by showcasing the talents of performing artists from around the world. Congratulations to the leader and best in the performing arts.”



## **FAYE ALEXANDER NELSON**

*President, DTE Energy Foundation*

“The DTE Energy Foundation is pleased to support exemplary organizations like UMS that inspire the soul, instruct the mind, and enrich the community.”







### **NANCY AND RANDALL FABER**

*Founders, Faber Piano Institute*

“We are proud to support UMS in its tradition of program excellence and outreach that enriches our thoughts, our families, and our community.”



### **JAMES G. VELLA**

*President, Ford Motor Company Fund*

“Experiencing the world through music and the arts makes us better as individuals while bringing us together as a community. We are proud to support UMS and the important role it plays in enriching our lives.”



Ford Motor Company Fund



### **DAVID N. PARSIGIAN**

*Ann Arbor Office Managing Partner, Honigman Miller Schwartz and Cohn LLP*

“In our firm’s tradition of supporting major cultural institutions, Honigman has been a long-time supporter of UMS. Our Ann Arbor office is proud to carry on that tradition on behalf of all of our attorneys, especially those who work and live in the Ann Arbor area. We all view the exceptional cultural experiences that UMS provides as key to the success of our community and our firm.”

**HONIGMAN**



### **MOHAMAD ISSA**

*Director, Issa Foundation*

“The Issa Foundation is sponsored by the Issa family, which has been established in Ann Arbor for the last 30 years, and is involved in local property management as well as area public schools. The Issa Foundation is devoted to the sharing and acceptance of culture in an effort to change stereotypes and promote peace. UMS has done an outstanding job bringing diverse and talented performers to Ann Arbor.”

ISSA FOUNDATION



### **KIRK ALBERT**

*Michigan Market President, KeyBank*

“KeyBank remains a committed supporter of the performing arts in Ann Arbor and we commend UMS for bringing another season of great performances to the community. Thank you, UMS, for continuing the tradition.”

**KeyBank** 



**MICHAEL CONLIN**

*Director of Business Development, Level X Talent*

“Level X Talent enjoys supporting UMS and its ongoing success bringing world-class artistic talent to the community. Please join us in congratulating UMS. As with the arts, consistently finding and attracting exceptional talent in Advanced Technology can be difficult. Level X Talent partners with our clients to meet that challenge.”



**KEITH ALLMAN**

*President and Chief Executive Officer, Masco*

“Masco is proud to support UMS and salutes its commitment to providing excellent and diverse programs that spark a lifelong passion for creativity. Thank you, UMS, for allowing all of us to experience the transformative power of the performing arts!”



**ALBERT M. BERRIZ**

*CEO, McKinley, Inc.*

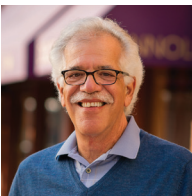
“The success of UMS is based on a commitment to present a diverse mix of quality cultural performances. McKinley is proud to support this tradition of excellence which enhances and strengthens our community.”



**THOMAS B. MCMULLEN**

*President and CEO, McMullen Properties*

“In the fifth grade, I began taking cornet lessons from Roger Jacobi, a young man right out of the U-M School of Music who years later would become President of the Interlochen Arts Academy. Roger gave me not only love of music, but also deep appreciation for what UMS does for school kids and adults alike.”



**DENNIS SERRAS**

*Owner, Mainstreet Ventures, Inc.*

“As restaurant and catering service owners, we consider ourselves fortunate that our business provides so many opportunities for supporting UMS and its continuing success in bringing internationally acclaimed talent to the Ann Arbor community.”





### STEPHEN G. PALMS

*Principal, Miller, Canfield, Paddock and Stone, P.L.C.*

“Miller Canfield proudly supports UMS for enhancing our quality of life by bringing the unfiltered immediacy of live performing arts to our community.”

MILLER  
CANFIELD



### TODD CLARK

*Regional President, Old National Bank*

“At Old National Bank, we’re committed to community partnership. That’s why, last year alone, we funded over \$5 million in grants and sponsorships and our associates donated almost 100,000 volunteer hours. It’s also the reason we’re pleased to once again support UMS as a corporate sponsor for the 2015–16 season.”



### RICHARD L. DEVORE

*Detroit and Southeast Michigan Regional President, PNC Bank*

“PNC Bank is proud to support the efforts of UMS and the Ann Arbor community.”



### BROCK HASTIE

*Managing Partner, Retirement Income Solutions, Inc.*

“With strong roots in the community for more than 30 years, our team of investment advisors is proud to support UMS. We recognize and appreciate UMS’s successful history and applaud the organization’s ongoing commitment to presenting authentic, world-renowned artists to the Ann Arbor community.”



### SAVA LELCA

*Chief Executive Officer, Savco: Hospitality*

“One of Ann Arbor’s greatest assets is UMS, which brings amazing, best-in-class performances to our city season after season. Savco Hospitality is honored to support UMS and its mission of engaging, educating, transforming, and connecting the arts to our community.”





**JOE SESI**

*President, Sesi Lincoln Volvo Mazda*

“UMS is an important cultural asset for our community. The Sesi Lincoln Volvo Mazda team is delighted to sponsor such a fine organization.”



**JOHN W. STOUT**

*President, Stout Systems*

“Supporting UMS is really a labor of love – love of music and the performing arts and love of arts advocacy and education. Everyone at Stout Systems knows we cannot truly be successful without helping to make our community a better place. It is an honor to be part of the UMS family.”



**TOM THOMPSON**

*Owner, Tom Thompson Flowers*

“Judy and I are enthusiastic participants in the UMS family. We appreciate how our lives have been elevated by this relationship.”



**OSAMU “SIMON” NAGATA**

*President, Toyota Motor Engineering & Manufacturing North America, Inc.*

“Toyota Technical Center is proud to support UMS, an organization with a long and rich history of serving diverse audiences through a wide variety of arts programming.”



**TIFFANY FORD**

*President, University of Michigan Credit Union*

“Thank you to UMS for enriching our lives. The University of Michigan Credit Union is proud to be a part of another great season of performing arts.”





### MARK SCHLISSEL

*President, University of Michigan*

“The University of Michigan is proud to support UMS as a natural extension of our academic enterprise. UMS’s outstanding performances and educational programs add tremendous value for our students, faculty, alumni, and regional community.”



### MARSCHALL RUNGE

*Executive Vice President for Medical Affairs, University of Michigan, and CEO, University of Michigan Health System*

We are proud to partner with UMS for its 2015–16 season. Music improves the quality of life for all of us, and, increasingly, is recognized as an important ingredient for better health.”



# Foundation, Government, & University Support

UMS gratefully acknowledges the support of the following private foundations, government agencies, and University of Michigan units:

---

## \$500,000 AND ABOVE

The Andrew W. Mellon Foundation



## \$20,000-\$499,000

Anonymous  
Charles H. Gershenson Trust



## \$5,000-\$19,999

Benard L. Maas Foundation  
The Seattle Foundation  
University of Michigan Third Century Initiative





# Youssou N'Dour and Super Étoile de Dakar

Youssou N'Dour / *Lead Vocals*  
Abdoulaye Lo / *Drums*  
Moustapha Gaye / *Guitar*  
Pape Oumar Ngom / *Guitar*  
Assane Thiam / *Tama*  
Babacar Faye / *Percussion*  
El Hadji Faye / *Percussion*  
Birame Dieng / *Backing Vocals*  
Pascale Kameni Camga / *Backing Vocals*  
Moustapha Faye / *Keyboards*  
Ibrahima Cisse / *Keyboards*  
Jean-Jacques Obam Edjoo / *Bass*  
Alain Oyono / *Saxophone*  
Pape Moussa Sonko / *Dance and Percussion*

Saturday Evening, November 14, 2015 at 8:00  
Hill Auditorium  
Ann Arbor

21st Performance of the 137th Annual Season  
Global Series

Tonight's performance is supported by the University of Michigan Health System.

Media partnership provided by WEMU 89.1 FM

Youssou N'Dour and Super Étoile de Dakar appear by arrangement with International Music Network.



## PROGRAM

*This evening's program will be announced from the stage by the artists and will be performed without intermission.*

On September 10, UMS received the **National Medal of Arts** from President Barack Obama at the White House. We are deeply honored to be the first university-based presenter to receive this recognition, which is the highest award given to artists and arts patrons by the US government. Please accept our sincerest thanks for your participation and generous patronage, all of which have played a critical role in UMS being recognized at the highest level. Artists tell us time and time again that "UMS audiences are the best" and we wholeheartedly agree. This medal belongs to all of us.

## THE “MICHAEL JACKSON OF AFRICA...”

Youssou N'Dour is the most influential African artist and performer of his generation. He has done for Senegalese music in our times what Leopold Senghor, former president of Senegal and founder of the Negritude movement, did for African literature a generation before. Drawing on the griot\* tradition of his mother and a dizzying array of influences from soul to Cuban *rumba* to hip-hop, Mr. N'Dour has introduced Senegalese and West African music to audiences in every corner of the earth. In doing so, he has made himself and his music accessible from the school auditorium in Dakar — where he performed often early in his career — to Carnegie Hall.

— *Dr. Lisa D. Cook, UMS Board member and Associate Professor, Economics and International Relations, Michigan State University*

\* griot: West African historian, storyteller, praise singer, poet, and/or musician. A repository of oral tradition.

## ARTISTS

Born in Dakar in 1959, **Youssou N'Dour** is a passionate singer, composer, bandleader, and producer whose powerfully expressive voice transformed both *mbalax* music of his native Senegal with influences from Cuban *rumba*, reggae, and Western hip-hop, jazz, and soul.

Mr. N'Dour is in the midst of a current US tour, with his band, the Super Étoile, who have recorded and toured the world together for nearly 30 years. With his traditional griot percussion, Wolof oral histories, and Afro-Cuban arrangements, Mr. N'Dour performs as a cultural ambassador for Senegal. Youssou N'Dour was named "African Artist of the Century" by the English publication *fRoots* and to the TIME 100— *Time Magazine's* annual list of "the 100 men and women whose power, talent, or moral example is transforming the world."

Mr. N'Dour's direct and powerful stage presence translates into a strong medium for the messages that have defined his career. His voice has launched Senegalese social movements (1994's "Set" as a rallying cry for urban youth activists). His songs have inspired international support in the fight against malaria (2009's "Fight Malaria") and for women's rights (1989's "Shaking the Tree," with Peter Gabriel). His work as a UNICEF ambassador and as a global pop star dubbed "the world's most famous singer" by *Rolling Stone* has marked his worldwide impact. Mr. N'Dour was the subject of the documentary *Youssou N'Dour: I Bring What I Love*, about Senegal's divided reaction to his

Grammy Award-winning album *Egypt*, a deeply spiritual album dedicated to a more tolerant view of Islam. In 2013, Mr. N'Dour was awarded Sweden's prestigious Polar Music Prize.

In 2012, Youssou N'Dour assumed the office of Senegal's Minister of Tourism and Culture under President Macky Sall.



Explore our Youssou N'Dour listening picks at [UMSLobby.org](http://UMSLobby.org).



# VICTORIES START HERE.

Kojo Elenitoba-Johnson, M.D., is developing new methods to diagnose blood cancers.



**HEALTH SYSTEM**  
UNIVERSITY OF MICHIGAN

## UMS ARCHIVES

This evening's performance marks **Yousou N'Dour**'s third UMS appearance, following his UMS debut in November 2005 presenting his project *Egypt* at Hill Auditorium.

This evening's performance marks **Super Étoile de Dakar**'s second UMS appearance, following its UMS debut with Mr. N'Dour in November 2007, also at Hill Auditorium.

TONIGHT'S VICTOR FOR UMS



# University of Michigan Health System

*Supporter of this evening's performance by Youssou N'Dour and  
Super Étoile de Dakar.*

## MAY WE ALSO RECOMMEND...

- 1/27 Ms. Lisa Fischer and Grand Baton
- 4/1 Mariachi Vargas de Tecalitlán (Global Series)
- 4/15 *Zafir: Musical Winds from North Africa to Andalucía*  
(Global Series)

*Tickets available at [www.ums.org](http://www.ums.org).*

## ON THE EDUCATION HORIZON...

- 12/1 Artist Interview: composer/pianist Timo Andres  
(McIntosh Theater, U-M Earl V. Moore Building, 100 Baits Dr.,  
7:30–9 pm)
- 1/18–2/22 UMS Night School: Constructing Identity  
(U-M Alumni Center, 200 Fletcher St., Mondays, 7–8:30 pm)

*Educational events are free and open to the public unless otherwise noted.*

# SUPPORTING THE ARTS

As a long-time patron of the arts,  
Honigman and its Ann Arbor attorneys  
are proud to support UMS.

Fernando Alberdi  
Christopher A. Ballard  
Maurice S. Binkow  
Cynthia M. Bott  
Anna M. Budde  
Thomas W. Forster II  
Carl W. Herstein  
Richard D. Hoeg  
Ann T. Hollenbeck  
J. Michael Huget  
Barbara A. Kaye

Tara E. Mahoney  
Cyril Moscow  
Leonard M. Niehoff  
David N. Parsigian  
Julie Kretschmer Reitz  
Eric J. Sosenko  
James E. Stewart  
Bea Swedlow  
Sara E. Waidelich  
Bill Winsten

For more information, please contact  
David Parsigian at 734.418.4250 or  
[DParsigian@honigman.com](mailto:DParsigian@honigman.com).

---

**HONIGMAN**<sup>®</sup>

---

[WWW.HONIGMAN.COM](http://WWW.HONIGMAN.COM)

Some of the world's most creative minds suffer from one of the most devastating conditions...

Be a source of hope.  
Help find a cure for **bipolar disorder**.

What makes a person bipolar, prone to manic highs and depressed lows? We are advancing research on the personalized treatment of this illness that affects close to 6 million Americans.

Make your donation at:  
[PrechterFund.org/help](http://PrechterFund.org/help)  
1-877-UM-GENES

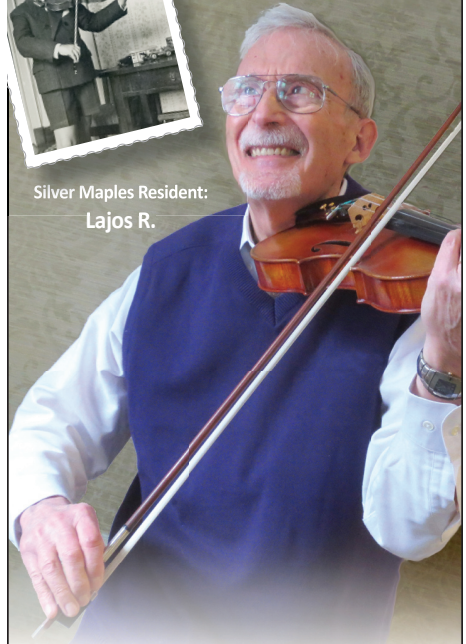


**HEINZ C. PRECHTER  
BIPOLAR RESEARCH FUND**  
UNIVERSITY OF MICHIGAN



*Still Playing*

Silver Maples Resident:  
**Lajos R.**



**S**ilver Maples is an active community of interesting and talented individuals, like Lajos, who started playing the violin at age 5 and still enjoys sharing his love of classical music.

Joining our neighborhood opens the door to a new phase of life. From the moment you move in, residents of Silver Maples become friends and family. Come by for a visit and join our VIP wait list.



**SILVER MAPLES**  
*of Chelsea*

RETIREMENT NEIGHBORHOOD

734.475.4111  
[SilverMaples.org](http://SilverMaples.org)

Locally-Owned, Non-Profit Jointly Sponsored by  
the Chelsea-Area Wellness Foundation and United Methodist  
Retirement Communities, Inc.



# People

Those who work to bring  
you UMS performances  
each season



## UMS Board of Directors

The UMS Board of Directors is a group of elected volunteers devoted to the performing arts and to our community. Their hard work ensures that UMS is able to offer outstanding performances year after year.

Stephen R. Forrest  
*Chair*

Sarah Nicoli  
*Vice Chair*

Rachel Bendit  
*Secretary*

Tim Petersen  
*Treasurer*

A. Douglas Rothwell  
*Chair, Corporate Council*

Stephen G. Palms  
*Past Board Chair*

Bruce Tuchman  
*Chair, National Council*

Janet Callaway  
David Canter  
Mark Clague  
Lisa D. Cook  
Julia Donovan Darlow  
Monique Deschaine  
Tiffany L. Ford  
Katherine Goldberg  
Richard F. Gutw  
Stephen Henderson  
Daniel Herwitz  
Joel Howell  
Frank Legacki  
Donald L. Morelock  
Agnes Moy-Sarns  
David Parsigian  
Sharon Rothwell  
Linh Song  
Rick Sperling  
Victor J. Strecher  
Karen Jones Stutz

### EX-OFFICIO

Mark S. Schlissel  
*President, U-M*

Martha E. Pollack  
*Provost, U-M*

Aaron P. Dworkin  
*Dean, U-M School of  
Music, Theatre & Dance*

Jeanice Kerr Swift  
*Ann Arbor Public Schools  
Superintendent*

Louise Taylor  
*Chair, UMS Ambassadors*

Photo: UMS patrons attend a San Francisco Symphony concert at Hill Auditorium, November 2014;  
photographer: Peter Smith Photography.

## UMS Senate

*The UMS Senate is composed of former members of the Board of Directors who dedicate time and energy to UMS and our community. Their ongoing commitment and gracious support of UMS are greatly appreciated.*

Wadad Abed  
Michael C. Allemang  
Carol L. Amster  
Gail Davis-Barnes  
Kathleen Benton  
Lynda Berg  
Richard S. Berger  
Maurice S. Binkow  
DJ Boehm  
Lee C. Bollinger  
Charles W. Borgsdorf  
Janice Stevens-Botsford  
Paul C. Boylan  
William M. Broucek  
Barbara Everitt Bryant  
Robert Buckler  
Letitia J. Byrd  
Kathleen G. Charla  
Mary Sue Coleman  
Jill A. Corr  
Peter B. Corr  
Ronald M. Cresswell  
Martha Darling  
Hal Davis  
Sally Stegeman DiCarlo  
Robert F. DiRomualdo  
Junia Doan  
Al Dodds  
James J. Duderstadt  
David Featherman  
David J. Flowers  
George V. Fornero  
Maxine J. Frankel  
Patricia M. Garcia  
Beverley B. Geltner  
Christopher Genteel  
Anne Glendon  
Patricia Green  
William S. Hann  
Shelia M. Harden  
Randy J. Harris  
Walter L. Harrison  
Norman G. Herbert

Deborah S. Herbert  
Carl W. Herstein  
David Herzig  
Peter N. Heydon  
Toni Hoover  
Kay Hunt  
Alice Davis Irani  
Stuart A. Isaac  
Thomas E. Kauper  
Christopher Kendall  
David B. Kennedy  
Gloria James Kerry  
Thomas C. Kinnear  
S. Rani Kotha  
Marvin Krislov  
F. Bruce Kulp  
Leo A. Legatski  
Melvin A. Lester  
Earl Lewis  
Patrick B. Long  
Helen B. Love  
Cynthia MacDonald  
Robert C. Macek  
Jeffrey MacKie-Mason  
Judythe H. Maugh  
Rebecca McGowan  
Barbara Meadows  
Joetta Mial  
Lester Monts  
Alberto Nacif  
Shirley C. Neuman  
Jan Barney Newman  
Roger Newton  
Len Niehoff  
Gilbert S. Omenn  
Joe E. O'Neal  
Randall Pittman  
Phil Power  
John D. Psarouthakis  
Rossi Ray-Taylor  
John W. Reed  
Todd Roberts  
Richard H. Rogel

Prudence L. Rosenthal  
A. Douglas Rothwell  
Judy Dow Rumelhart  
Maya Savarino  
Ann Schriber  
Edward R. Schulak  
John J.H. Schwarz  
Erik H. Serr  
Ellie Serras  
Joseph A. Sesi  
Harold T. Shapiro  
George I. Shirley  
John O. Simpson  
Timothy P. Slottow  
Anthony L. Smith  
Carol Shalita Smokler  
Jorge A. Solis  
Cheryl Soper  
Peter Sparling  
James C. Stanley  
Lois U. Stegeman  
Edward D. Surovell  
James L. Telfer  
Susan B. Ullrich  
Michael D. VanHermert  
Eileen Lappin Weiser  
B. Joseph White  
Marina v.N. Whitman  
Clayton E. Wilhite  
Iva M. Wilson  
Karen Wolff

## UMS National Council

*The UMS National Council is comprised of U-M alumni and performing arts enthusiasts across the country committed to supporting, promoting, and advocating for UMS with a focus on ensuring that the performing arts are an integral part of the student experience.*

Bruce Tuchman <i>Chair</i>	Maxine Frankel Eugene Grant	Zarin Mehta Jordan Morgan
Andrew Bernstein Kathleen G. Charla Jacqueline Davis Marylene Delbourg- Delphis	Charles Hamlen Katherine D. Hein David Heleniak Patti Kenner Wallis C. Klein	Caroline Nussbaum James A. Read Herbert Ruben James and Nancy Stanley Christian Vesper
John and Betty Edman Janet Eilber Barbara Fleischman	Jerry and Dale Kolins David Leichtman and Laura McGinn	Ann and Clayton Wilhite Stephen R. Forrest <i>Ex-Officio</i>

## UMS Corporate Council

*The UMS Corporate Council is a group of regional business leaders who serve as advocates and advisors to UMS as we seek to broaden our base of corporate support throughout southeastern Michigan.*

A. Douglas Rothwell <i>Chair</i>	Richard L. DeVore Nolan Finley Stephen R. Forrest	Sharon Rothwell Frederick E. Shell Michael B. Staebler
Albert Berriz Bruce Brownlee Robert Buckler Robert Casalou	Michele Hodges Mary Kramer David Parsigian Vivian Pickard	James G. Vella Stephen R. Forrest <i>Ex-Officio</i>

## UMS Students

*Students in our volunteer internship and work-study program gain valuable experience in all areas of arts management while contributing greatly to UMS's continued success.*

Maryam Ahmed Andrew Bader Madisen Bathish Meredith Bobber* Clare Brennan Mysti Byrnes Gabrielle Carels Abigail Choi Catherine Cypert Anna Darnell Kathryn DeBartolomeis Sophia Deery	Trevor Hoffman Annie Jacobson Garret Jones Travis Jones Ayantu Kebede Meredith Kelly Saba Keramati Emily Kloska Caitlyn Koester Bridget Kojima Austin Land Robert Luzynski	Christina Maxwell* Gunnar Moll Tsukumo Niwa* Claire Pegram Evan Saddler* Nisreen Salka Heather Shen Priyanka Srivastava Rachel Stopchinski Edward Sundra Isaiah Zeavin-Moss  <i>*21st Century Artist Interns</i>
---	---	--

**Organic.  
Holistic.  
No Artificial Ingredients.**

***Psychoanalysis helps—mind, body, and soul.***

**Ask one of our psychoanalysts how you, or someone you love, can work on achieving a fuller, richer life.**

**Michigan  
Psychoanalytic  
INSTITUTE  
&  
SOCIETY**



*For change that lasts.  
Learn more about us. [www.mpi-mps.org](http://www.mpi-mps.org)*

Carol Barbour, PhD  
Alex Barends, PhD  
Ronald Benson, MD  
Meryl Berlin, PhD  
Robert Cohen, PhD  
Susan Cutler, PhD  
Sara Dumas, MD  
Joshua Ehrlich, PhD  
Harvey Falit, MD  
Richard Hertel, PhD  
Erika Homann, PhD  
Howard Lerner, PhD  
Barry Miller, MD  
Christina Mueller, MD  
Jack Novick, PhD  
Kerry Kelly Novick  
Jean-Paul Pegeron, MD  
Dwarakanath Rao, MD  
Ivan Sherick, PhD  
Merton Shill, PhD  
Michael Shulman, PhD  
Michael Singer, PhD  
Jonathan Sugar, MD  
Dushyant Trivedi, MD  
Jeffrey Urist, PhD  
Gail van Langen, PhD  
David Votruba, PhD  
Margaret Walsh, PhD  
Elisabeth Weinstein, MD  
Mark Ziegler, PhD



**Celebrating  
137 Successful Seasons**

**Jaffe**  
JAFFE RAITT HEUER & WEISS  
*A Professional Corporation  
Attorneys & Counselors*

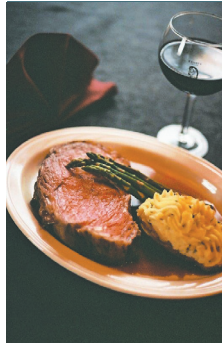
*proud supporter of*

**ums**  
BE PRESENT

535 W. WILLIAM STREET, SUITE 400S • ANN ARBOR, MICHIGAN 48103  
P: 734.222.4776 • F: 734.222.4769

[www.jaffelaw.com](http://www.jaffelaw.com)

ANN ARBOR • SOUTHFIELD • DETROIT • NAPLES



Join us for  
cocktails and  
dinner at our  
two Ann Arbor  
restaurants for  
a spectacular  
meal after the  
performance.



Serving steaks cut in our own market, Knight's famous prime rib, falling-off-the-bone ribs, burgers, seafood, salads, daily specials, "home-baked" bread and desserts.

**Knight's Steakhouse**

600 East Liberty • 734/887-6899

2324 Dexter Avenue • 734/665-8644

Open Daily 11 a.m. to Midnight - Liberty St.

*Preferred Seating Available*

[www.Knightsrestaurants.com](http://www.Knightsrestaurants.com)

## UMS Faculty Insight Group

*As part of the UMS Mellon Initiative on Arts/Academic Integration, this group advises UMS staff on opportunities to integrate our programming more deeply and systematically into the academic life of the University of Michigan.*

Mark Clague	Linda Gregerson	Daniel Klionsky	Lester Monts
Clare Croft	Marjorie Horton	Lawrence	Melody Racine
Philip J. Deloria	Joel Howell	La Fountain-	Sidonie Smith
Gillian Eaton	Martha S. Jones	Stokes	Emily Wilcox

## UMS K-12 Think Tank

*Through an annual think tank, UMS brings together K-12 educators and administrators to help us stay aware of trends, changing resources, and new opportunities for learning in the K-12 classroom. The following individuals participated in May 2015:*

Robin Bailey	Janet Callaway	Katie Mann	Terra Webster
Ann Marie Borders	Kathy Churchill	Naomi Norman	Amy Willacker
Deb Brzoska	Colleen Conway	Michelle Peet	
Jennifer Burton	Amy Deller	Yael Rothfeld	
Rose Marie	Tia Farrell	Sarena Shivers	
Callahan	Dayna Lang	Laura Wayne	

## UMS Ambassadors

*UMS Ambassadors advance the goals of UMS, champion the UMS mission through community engagement, provide and secure financial support, and assist in countless other ways.*

Louise Taylor <i>Chair</i>	Judy Cohen	Michael Lee	Kathy Rich
William Shell <i>Vice Chair</i>	Jon Desenberg	Gloria Lewis	Nan Richter
Karen Bantel <i>Secretary</i>	Susan DiStefano	Laura Machida	Audrey Schwimmer
Wendy K. Zellers <i>Treasurer</i>	Annemarie Kilburn Dolan	Katie Malicke	Carol Senneff
Pat Bantle <i>Past Chair</i>	Sharon Peterson Dort	Rita Malone	Arlene P. Shy
Sassa Akervall	Gloria J. Edwards	Valerie Roedenbeck	Elena Snyder
Arlene Barnes	Christina Ferris	Maloof	Ren Snyder
Astrid Beck	Christina Ferris	Patti McCloud	Susan Snyder
Gail Bendit	Zita Gillis	Terry Meerkov	Linda Spector
Corry Berkooz	Joan Grissing	Barbara Mulay	Pam Tabbaa
Connie Rizzolo Brown	Stephanie Hale	Magda Munteanu	Elaine Tetreault
Richard Chang	Jane Holland	Jane Nyman	Janet Torno
	Allison Jordon	Marjorie Oliver	Martha Williams
	Carol Kaplan	Betty Palms	Sarajane Winkelman
	Nancy Karp	Karen Pancost	
	Barbara Kaye	Ruth Petit	
	Kendra Kerr	Julie Picknell	
	Freddi Kilburn	Susan Pollans	
	Ye Na Kim	Anne Preston	
	Russell Larson	Jeff Reece	



# STATESIDE

*with* Cynthia Canty

Conversations About What Matters In Michigan

Monday – Thursday at 3 p.m. & 10 p.m.



Your NPR news station **npr**

91.7 FM Ann Arbor/Detroit  
104.1 FM West Michigan  
91.1 FM Flint  
[michiganradio.org](http://michiganradio.org)

MILLER CANFIELD APPLAUDS THE

## UNIVERSITY MUSICAL SOCIETY

For Being an Instrumental Part  
of Our Community

**MILLER  
CANFIELD**  
[millercanfield.com](http://millercanfield.com)

ANN ARBOR   DETROIT   GRAND RAPIDS   KALAMAZOO   LANSING   TROY

OUR ANN ARBOR LAWYERS | 101 North Main St., 7th Floor, Ann Arbor, MI 48104 | 734.663.2445

Paul R. Dimond  
Joseph M. Fazio  
Samantha S. Galecki  
Robert E. Gilbert

Caroline B. Giordano  
Lisa C. Hagan  
Joseph C. Huntzicker  
M. Sheila Jeffrey  
Jeffrey L. LaBine

Anthony J. Mavrinac  
John W. McNair  
Sonal Hope Mithani  
John D. Moran  
Kristin E. Nied

David D. O'Brien  
Thomas C. O'Brien  
Emily C. Palacios  
Stephen G. Palms  
Clarence L. Pozza, Jr.

Kimberly L. Scott  
Erik H. Serr  
Timothy D. Sochocki  
Christopher M. Trebilcock

## UMS Staff

The UMS Staff works hard to inspire individuals and enrich communities by connecting audiences and artists in uncommon and engaging experiences.

### ADMINISTRATION & FINANCE

Kenneth C. Fischer  
*President*

John B. Kennard, Jr.  
*Director of Administration*

Kathy Brown  
*Executive Assistant*

Jenny Graf  
*Tessitura Systems  
Administrator*

Patricia Hayes  
*Financial Manager*

John Peckham  
*Information Systems  
Manager*

### DEVELOPMENT

Marnie Reid  
*Interim Director of  
Development*

Esther Barrett  
*Development Coordinator*

Susan Bozell Craig  
*Associate Director of  
Development, Corporate  
Partnerships & Major Gifts*

Rachelle Lesko  
*Annual Fund Manager*

Lisa Michiko Murray  
*Associate Director of  
Development, Foundation  
& Government Relations*

Cindy Straub  
*Manager of Volunteers &  
Special Events*

Mary A. Walker  
*Campaign Director and  
Associate Director of  
Development, Major Gifts*

### EDUCATION & COMMUNITY ENGAGEMENT

James P. Leija  
*Director of Education &  
Community Engagement*

Shannon Fitzsimons  
*Campus Engagement  
Specialist*

Teresa C. Park  
*Education Coordinator*

Mary Roeder  
*Community Programs  
Manager*

### MARKETING & COMMUNICATIONS

Sara Billmann  
*Director of Marketing &  
Communications*

Jesse Meria  
*Video Production  
Specialist*

Annick Odom  
*Marketing Coordinator*

Anna Prushinskaya  
*Senior Manager of Digital  
Media*

### PROGRAMMING & PRODUCTION

Michael J. Kondziolka  
*Director of Programming*

Jeffrey Beyersdorf  
*Production Director*

Alex Gay  
*Production Coordinator*

Anne Grove  
*Artist Services Manager*

Mark Jacobson  
*Senior Programming  
Manager*

Liz Stover Rosenthal  
*Programming Manager*

### TICKET OFFICE

Christina Bellows  
*Ticket Services Manager*

Megan Boczar  
*Ticket Office Assistant*

Katherine McBride  
*Group Sales &  
Promotions Coordinator*

Ellen Miller  
*Ticket Office/Front-of-  
House Assistant*

Anné Renforth  
*Ticket Services  
Coordinator*

Anna Simmons  
*Assistant Ticket Services  
Manager*

Willie Sullivan  
*Front-of-House  
Coordinator*

Dennis Carter, Bruce  
Oshaben, Brian Roddy  
*Head Ushers*

### UMS CHORAL UNION

Scott Hanoian  
*Music Director &  
Conductor*

Arianne Abela  
*Assistant Conductor*

Kathleen Operhall  
*Chorus Manager*

Nancy Heaton  
*Chorus Librarian*

Jean Schneider  
*Accompanist*

Scott VanOrnum  
*Accompanist*

**Trusted financial advisors  
to Ann Arbor and the  
university community for  
more than 30 years.**

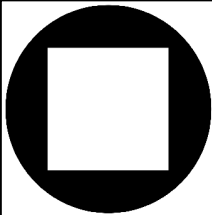


**Retirement Income Solutions**

*Helping to grow and preserve your wealth*

**Ann Arbor | 734-769-7727 | risadvisory.com**

© 2015 Retirement Income Solutions is an Independent Investment Advisor



**PERFORMANCE  
NETWORK  
THEATRE**  
A Space of Possibility

**Who's Afraid of Virginia Woolf?**

**Constellations** (Michigan Premiere)

**The Othello Principle**

**Summer Retreat** (World Premiere)

**Pulp** (NNPN Rolling World Premiere)

**Why Not Me? A Sammy Davis  
Jr. Story** (Michigan Premiere)

**Dickens: An A Capella Carol**

**[www.pntheatre.org](http://www.pntheatre.org)  
734-663-0681**

# STAY CLASSIC

Timeless. Contemporary.  
Soothing. Inspiring.

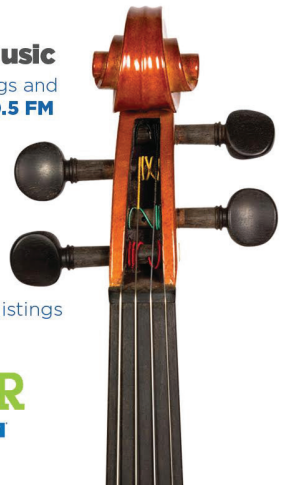
## Classical Music

Daytime, evenings and  
overnight on **90.5 FM**

## FORTE

High school  
performers in  
pursuit of  
excellence.

Check local **TV** listings



**WKAR**





# Generous Donors

## Campaign Gifts and Multi-Year Pledges

To help ensure the future of UMS, the following donors have made gifts to the Victors for Michigan campaign. We are grateful to these donors for their commitments.

### CAMPAIGN CO-CHAIRS

Maxine Frankel and  
James Stanley

### \$500,000 OR MORE

Carl Cohen  
Ilene H. Forsyth  
Maxine and Stuart Frankel  
Foundation  
Eugene and Emily Grant  
Family Foundation  
The Andrew W. Mellon  
Foundation  
Candis J. and Helmut F. Stern  
The Wallace Foundation

### \$100,000–\$499,999

Anonymous  
Bert Askwith and Patti  
Askwith Kenner  
Emily W. Bandera  
Dennis Dahlmann  
Sharon and Dallas Dort  
Stephen and Rosamund  
Forrest  
Susan and Richard Gutow  
Wallis Cherniack Klein  
David Leichtman and Laura  
A. McGinn  
Norma and Dick Sarns  
Ron and Eileen Weiser  
Max Wicha and Sheila  
Crowley  
Ann and Clayton Wilhite

### \$75,000–\$99,999

David and Phyllis Herzig  
Nancy and James Stanley

### \$50,000–\$74,999

Essel and Menacka Bailey  
Daniel and Barbara Balbach  
Penny and Ken Fischer  
Beverley and Gerson Geltner  
Mohamad Issa/Issa  
Foundation  
Miller, Canfield, Paddock  
and Stone, P.L.C.  
Mr. and Mrs. Donald L.  
Morelock  
Agnes Moy-Sarns and David  
Sarns and the Sarns Family  
Gil Omenn and Martha  
Darling  
Tim and Sally Petersen  
Phil and Kathy Power  
Sharon and Doug Rothwell  
Linda Samuelson and Joel  
Howell  
Jane and Edward Schulak  
Dennis and Ellie Serras  
Glenn E. Watkins  
Marina and Bob Whitman  
Gerald B. Zelenock

### \$25,000–\$49,999

Carol Amster  
Cheryl Cassidy  
Junia Doan  
John R. Edman and Betty B.  
Edman  
Barbara H. Garavaglia  
Charles H. Gershenson Trust  
Anne and Paul Glendon  
Norman and Debbie Herbert  
Carl and Charlene Herstein  
Jerry and Dale Kolins

Jeffrey MacKie-Mason and  
Janet Netz  
Martin Family Foundation  
M. Haskell and Jan Barney  
Newman  
Dan and Sarah Nicoli  
Lois Stegeman  
Stout Systems  
John W. and Gail Ferguson  
Stout  
Karen and David Stutz  
Dody Viola

### \$15,000–\$24,999

Michael and Suzan  
Alexander  
Linda and Ronald Benson  
Valerie and David Canter  
Sara and Michael Frank  
Wendy and Ted Lawrence  
Virginia and Gordon Nordby  
Eleanor Pollack

### \$5,000–\$14,999

Barbara Anderson and John  
Romani  
John and Lillian Back  
Karen Bantel and Steve  
Geiringer  
Suzanne A. and Frederick J.  
Beutler  
Tim and Robin Damschroder  
Michele Derr  
Ann Martin and Russ Larson  
Steve and Betty Palms  
Eric and Ines Storchok

# Classical & Music & NPR News

*Listen online at*  
[www.wgte.org](http://www.wgte.org)

*Listen on the  
radio at*

WGTE FM 91.3 Toledo

WGLE 90.7 Lima

WGBE 90.9 Bryan

WGDE 91.9 Defiance



**wgte**  
Public Media

**SMITH HAUGHEY AND  
ITS ATTORNEYS PROUDLY  
SUPPORT THE...**

## UNIVERSITY MUSICAL SOCIETY

*Our Ann Arbor Attorneys:*

Cheryl Chandler  
Gary Eller  
Sharon Kelly  
Veronique Liem

Edward Lynch  
William McCandless  
Michael Miller  
Edward Stein

**SH** SMITH HAUGHEY  
RICE & ROEGGE  
ATTORNEYS AT LAW  
734-213-8000 [www.shrr.com](http://www.shrr.com)  
213 S. ASHLEY, STE. 400  
ANN ARBOR, MI 48104



Contemporary Food  
Classic Décor • Full Bar  
Locally Owned

316 S. State Street  
@ North University  
734-994-4004

[www.redhawkannarbor.com](http://www.redhawkannarbor.com)

**revive**

soups • custom salads • classic sandwiches

**replenish**

essential groceries • beer & wine

619 East University @ Zaragon Place  
734-332-3366 • [www.revive-replenish.com](http://www.revive-replenish.com)

## Endowed Funds

*The success of UMS is secured in part by income from UMS endowment funds. You may contribute to an existing endowment fund or establish a named endowment with a minimum gift of \$25,000. We extend our deepest appreciation to the many donors who have established and/or contributed to the following funds:*

H. Gardner and Bonnie Ackley Endowment Fund  
 Herbert S. and Carol Amster Endowment Fund  
 Catherine S. Arcure Endowment Fund  
 Carl and Isabelle Brauer Endowment Fund  
 Dahlmann Sigma Nu Endowment UMS Fund  
 Hal and Ann Davis Endowment Fund  
 Dallas and Sharon Dort Endowment Fund  
 Doris Duke Charitable Foundation Endowment Fund  
 John R. and Betty B. Edman Endowment Fund  
 Epstein Endowment Fund  
 Stephen and Rosamund Forrest Student Ticket Endowment Fund  
 Ilene H. Forsyth Endowment Funds for Choral Union, Chamber Arts, and Theater  
 James Garavaglia Theater Endowment Fund  
 Anne and Paul Glendon Endowment Fund  
 Susan and Richard Gutow Renegade Ventures Endowment Fund  
 George N. and Katherine C. Hall Endowment Fund  
 Norman and Debbie Herbert Endowment Fund  
 David and Phyllis Herzig Endowment Fund  
 JazzNet Endowment Fund  
 William R. Kinney Endowment Fund  
 Wallis Cherniack Klein Endowment for Student Experiences  
 Dr. and Mrs. Jerry Kolins Shakespearean Endowment Fund  
 Frances Mauney Lohr Choral Union Endowment Fund  
 Natalie Matovinović Endowment Fund  
 Medical Community Endowment Fund  
 Dr. Robert and Janet Miller Endowment Fund  
 NEA Matching Fund  
 Ottmar Eberbach Funds  
 Palmer Endowment Fund  
 Mary R. Romig-deYoung Music Appreciation Fund  
 Prudence and Amnon Rosenthal K-12 Education Endowment Fund  
 Charles A. Sink Endowment Fund  
 Herbert E. and Doris Sloan Endowment Fund  
 James and Nancy Stanley Endowment Fund  
 Susan B. Ullrich Endowment Fund  
 UMS Endowment Fund  
 The Wallace Endowment Fund  
 The Zelenock Family Endowment Fund

**15  
16** SEASON

**BEETHOVEN FESTIVAL with  
GARRICK OHLSSON**

September 19  
Hill Auditorium



**ROMANTIC  
TCHAIKOVSKY**

October 24  
Michigan Theater



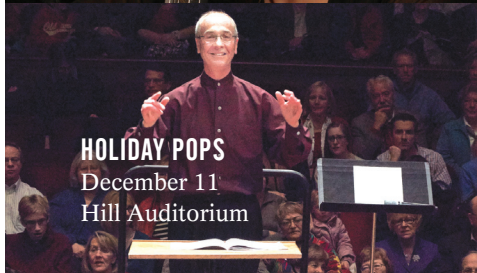
**MENDELSSOHN  
"ITALIAN"**

November 7  
Michigan Theater



**HOLIDAY POPS**

December 11  
Hill Auditorium



**MOZART  
BIRTHDAY BASH**

January 16  
Michigan Theater



**HARP MAGIC**

March 12  
Michigan Theater



**THE PLANETS**

April 9  
Michigan Theater



**Ann Arbor Symphony Orchestra**

(734) 994-4801 • a2so.com

## Planned Gifts/Bequests

*We are grateful to the following donors for including UMS in their estate plans. These gifts will provide financial support to UMS for generations to come.*

Anonymous  
 Bernard and Raquel Agranoff  
 Mike Allemang  
 Carol and Herb Amster  
 Neil P. Anderson  
 Dr. and Mrs. David G. Anderson  
 Catherine S. Arcue  
 Barbara K. and Laurence R. Baker  
 Rodney and Joan Bentz  
 Kathy Benton and Robert Brown  
 Linda and Maurice Binkow  
 Elizabeth S. Bishop  
 Mr. and Mrs. W. Howard Bond  
 Mr. and Mrs. Pal E. Borondy  
 Barbara Everitt Bryant  
 Lou and Janet Callaway  
 Pat and George Chatas  
 Mr. and Mrs. John Alden Clark  
 Carl Cohen  
 Alan and Bette Cotzin  
 Mary C. Crichton  
 Penny and Ken Fischer  
 Susan Ruth Fisher  
 Meredith L. and Neal Foster  
 Thomas and Barbara Gelehrter  
 Beverley and Gerson Geltner  
 Dr. Sid Gilman and Dr. Carol Barbour  
 Anne and Paul Glendon  
 Thea and Elliot Glicksman  
 Debbie and Norman Herbert  
 Rita and Peter Heydon  
 John and Martha Hicks  
 Gideon and Carol Hoffer

Marilyn G. Jeffs  
 Thomas C. and Constance M. Kinnear  
 Diane Kirkpatrick  
 Dr. and Mrs. Jerry Kolins  
 Frank Legacki and Alicia Torres  
 Leo and Kathy Legatski  
 Richard LeSueur  
 Robert and Pearson Macek  
 Susan McClanahan  
 Griff and Pat McDonald  
 Joanna McNamara  
 M. Haskell and Jan Barney Newman  
 Len Niehoff  
 Dr. and Mrs. Frederick O'Dell  
 David Parsigian  
 Irena Politano  
 Eleanor Pollack  
 Mr. and Mrs. Dennis M. Powers  
 Mr. and Mrs. Michael Radock  
 Mr. and Mrs. Jack Ricketts  
 Prue and Ami Rosenthal  
 Irma J. Sklenar  
 Art and Elizabeth Solomon  
 Richard W. Solt  
 Hildreth Spencer  
 Eric and Ines Storhok  
 Louise Taylor  
 Roy and JoAn Wetzell  
 Ann and Clayton Wilhite  
 Max Wicha and Sheila Crowley  
 Marion Wirick  
 Mr. and Mrs. Ronald G. Zollar

## How to Make a Gift

*UMS excites the imagination, sparks creativity, sharpens collaboration, inspires new ways of thinking, and connects us in ways that only the arts can. Your gift of any size will enable UMS to deliver world-class performances and create outstanding educational opportunities for our community.*

Please send gift to:  
 UMS Development  
 881 N. University Ave  
 Ann Arbor, MI 48109-1011

For more information, please call 734.764.8489 or visit [ums.org/support](http://ums.org/support).

# UMS Support – July 1, 2014 – June 30, 2015

The following list includes donors who made gifts to UMS between July 1, 2014 and June 30, 2015. Due to space restraints, we can only list in the UMS program book those who donated \$250 or more. Donors of \$1-\$249 will be included in the online list at [ums.org](http://ums.org).

## PRODUCERS (\$500,000 OR MORE)

Ilene H. Forsyth #  
Eugene and Emily Grant Family  
Foundation  
University of Michigan

## DIRECTORS (\$100,000–\$499,999)

Anonymous  
Carl and Isabelle Brauer Fund #  
Ford Motor Company Fund and  
Community Services  
Maxine and Stuart Frankel  
Foundation  
Karl V. Hauser #  
The Andrew W. Mellon Foundation  
University of Michigan Health System  
The Wallace Foundation

## SOLOISTS (\$50,000–\$99,999)

Anonymous  
Anonymous #  
Bert Askwith and Patti Askwith  
Kenner  
Community Foundation for  
Southeast Michigan  
Dance/USA  
Doris Duke Charitable Foundation  
DTE Energy Foundation  
Masco Corporation Foundation  
National Endowment for the Arts  
Linda and Stuart Nelson  
*in honor of Ken Fischer*

## MAESTROS (\$20,000–\$49,999)

Anonymous  
Anonymous #  
Emily W. Bandera, M.D.  
Sharon and Dallas Dort #  
Stephen and Rosamund Forrest #  
Barbara H. Garavaglia #  
*in memory of Jim Garavaglia*  
Beverley and Gerson Geltner  
Charles H. Gershenson Trust,  
Maurice S. Binkow, Trustee  
Susan and Richard Gutow #  
KeyBank  
Jeffrey MacKie-Mason and Janet Netz  
Michigan Council for Arts and Cultural  
Affairs  
Philip and Kathy Power  
Norma and Dick Sarns #  
Sesi Lincoln  
Toyota  
Bruce G. Tuchman

U-M Third Century Initiative  
Ron and Eileen Weiser  
Max Wicha and Sheila Crowley  
Ann and Clayton Wilhite

## VIRTUOSOS (\$10,000–\$19,999)

Jerry and Gloria Abrams  
*includes gift in honor of John M.  
Nicklas*  
Menakka and Essel Bailey #  
Bank of Ann Arbor  
Joseph A. Bartush, LS&A, Class of '71  
Bendit Foundation  
Rachel Bendit and Mark Bernstein  
Maurice and Linda Binkow  
Carl Cohen  
Jim and Patsy Donahey  
Penny and Ken Fischer  
Anne and Paul Glendon  
David and Phyllis Herzig  
Joel Howell and Linda Samuelson  
The Japan Foundation  
Frank Legacki and Alicia Torres  
Natalie Matovinović  
*in memory of Josip Matovinović  
MD*  
McKinley Associates, Inc.  
Thomas and Deborah McMullen  
McMullen Properties  
Mrs. Robert E. Meredith #  
Miller, Canfield, Paddock and Stone  
P.L.C.  
Mr. and Mrs. Donald L. Morelock  
New England Foundation for the Arts  
Old National Bank  
Gil Omenn and Martha Darling  
Leslee and Michael Perstein  
*in honor of Margie McKinley*  
Tim and Sally Petersen #  
PNC Foundation  
James Read  
Retirement Income Solutions  
Sharon and Doug Rothwell  
Agnes Moy-Sarns and David Sarns  
Jane and Edward Schulak  
Dennis and Ellie Serras  
Gary and Diane Stahle  
Nancy and James Stanley  
University of Michigan Credit Union  
Stanford and Sandra Warshawsky  
Robert O. and Darragh H. Weisman  
*in honor of Jean and Sidney Silber*  
Robert and Marina Whitman  
Gerald B. (Jay) Zelenock #

## CONCERTMASTERS (\$5,000–\$9,999)

Michael Allemang and Janis Bobrin  
Carol Amster  
Barbara A. Anderson and John H.  
Romani  
Ann Arbor Automotive  
Anonymous  
Linda and Ronald Benson  
Andrew and Lisa Bernstein  
Gary Boren  
Edward and Mary Cady  
Valerie and David Canter  
Cheryl Cassidy  
Comerica Bank  
Anne and Howard Cooper  
Junia Doan  
Faber Piano Institute  
Randall and Nancy Faber  
David and Jo-Anna Featherman  
Barbara G. Fleischman  
Katherine and Tom Goldberg  
Norman and Debbie Herbert #  
Carl and Charlene Herstein  
Honigman Miller Schwartz and  
Cohn LLP  
David and Sally Kennedy  
*in memory of Elizabeth Earhart  
Kennedy*  
Jerry and Dale Kolins #  
Samuel and Marilyn Krimm  
Level X Talent  
Richard and Carolyn Lineback  
Benard L. Maas Foundation  
Mardi Gras Fund  
Martin Family Foundation #  
Dan and Sarah Nicoli  
THE MOSAIC FOUNDATION (of R. &  
P. Heydon)  
M. Haskell and Jan Barney Newman  
Virginia and Gordon Nordby  
Rob and Quincy Northrup  
Eleanor Pollack  
Frances Quarton  
Corliss and Dr. Jerry Rosenberg  
*in honor of Ken Fischer*  
Prue and Ami Rosenthal  
Lynne Rosenthal  
Savco Hospitality  
Lois Stegeman  
The Summer Fund of the Charlevoix  
County Community Foundation  
Stout Systems  
John W. and Gail Ferguson Stout  
Karen and David Stutz  
*includes gift in honor of Donald  
and Antoinette Morelock*  
Dody Viola

Dr. Carl Winberg  
*in honor of Margie McKinley*

**LEADERS**  
**(\$2,500–\$4,999)**

Jim and Barbara Adams  
Michael and Suzan Alexander  
Anonymous  
Arts Midwest Touring Fund  
John and Lillian Back  
Karen Bantel and Steve Geiringer  
Dr. Carol Barbour and Dr. Sid Gilman  
Bob and Wanda Bartlett  
Bradford and Lydia Bates  
Kathy Benton and Robert Brown  
Suzanne A. and Frederick J. Beutler #  
Carolyn M. Carty and Thomas H. Haug  
Jean and Ken Casey  
Julia Donovan Darlow and John Corbett O'Meara  
Elena and Nicholas Delbanco  
Alice Dobson  
John Dryden and Diana Raimi  
Joan and Emil Engel  
George W. Ford  
*in memory of Steffi Reiss*  
Sara and Michael Frank  
Prof. David M. Gates  
Thomas and Barbara Gelehrter  
Bill and Ruth Gilkey  
John Griffith  
Leslie and Mary Ellen Guinn  
Lynn and Martin Halbfinger  
Robert and Dannielle Hamilton  
Katherine D. Hein  
Connie and Tom Kinnear  
Diane Kirkpatrick  
Philip and Kathryn Klintworth  
Ted and Wendy Lawrence  
Leo and Kathy Legatski  
Carolyn and Paul Lichter  
Lawrence and Rebecca Lohr #  
E. Daniel and Kay Long #  
Jean E. Long  
Ernest and Adèle McCarus  
Susan McClanahan and Bill Zimmerman  
*includes a gift in honor of Donald and Antoinette Morelock*  
Estate of Michael G. McGuire  
Paul Morel and Linda Woodworth  
Virginia Morgan and Joseph Spiegel  
William Nolting and Donna Parmelee  
Steve and Betty Palms  
Elizabeth and David Parsigian  
Judith A. Pavitt  
Bertram and Elaine Pitt  
Jim and Bonnie Reece  
John W. Reed  
*in honor of Ken Fischer*  
Anthony L. Reffells  
Nathaniel and Melody Rowe

Frankie and Scott Simonds  
*in honor of Candis and Helmut Stern*  
Ed and Natalie Surovell  
Judy and Lewis Tann  
Keturah Thunder Haab  
Jim Toy  
*includes gifts in honor of Ken Fischer and in memory of Jerry Fischer*  
Elise Weisbach

**PATRONS**  
**(\$1,000–\$2,499)**

Katherine Aldrich  
Richard and Mona Alonzo  
American Title Company of Washtenaw  
Christiane Anderson  
David G. and Joan M. Anderson #  
John Anderson and Lyn McHie  
Dave and Katie Andrea  
Anonymous  
Anonymous  
*in honor of Jean Campbell*  
Dr. and Mrs. Rudi Ansbacher  
Harlene and Henry Appelman  
Dr. Frank J. Ascione  
Bob and Martha Ause  
Elizabeth R. Axelson and Donald H. Regan  
Jonathan Ayers and Teresa Gallagher  
Patricia Bard  
Lisa and Jim Baker  
Rosalyn, Joshua, and Beth Barclay  
*in memory of Mel L. Barclay, M.D.*  
John and Ginny Bareham  
Anne Beaubien and Phil Berry  
Cecilia Benner  
*in memory of David Lebnborn*  
Dr. Rosemary R. Berardi and Dr. Carolyn R. Zaleon  
Sara Billmann and Jeffrey Kuras  
Joan Binkow  
John Blankley and Maureen Foley  
Blue Nile Restautant  
DJ and Dieter Boehm  
*in honor of Sara Billmann*  
Margaret and Howard Bond  
Rebecca S. Bonnell  
Charles and Linda Borgsdorf  
Laurence and Grace Boxer  
Dr. and Mrs. Ralph R. Bozell  
Dale E. and Nancy M. Briggs  
David and Sharon Brooks  
Robert and Jeannine Buchanan  
Lawrence and Valerie Bullen  
Joan and Charley Burleigh  
Barbara and Al Cain  
Lou and Janet Callaway  
Dan Cameron Family Foundation  
Jean W. Campbell  
Sally Camper and Bob Lyons  
Thomas and Marilou Capó  
Anne Chase  
Patricia Chatas  
Myung Choi  
Brian and Cheryl Clarkson  
Ellen and Hubert Cohen  
Deborah Keller-Cohen and Evan Cohen  
Connie and Jim Cook  
Mac and Nita Cox  
Christopher Dahl and Ruth Rowse  
*in honor of Ken Fischer*  
Timothy and Robin Damschroder  
Charles and Kathleen Davenport  
Michele Derr  
*in memory of Ellwood Derr*  
Monique Deschaine  
Molly Dobson  
Peter and Grace Duren  
Rosalie Edwards/Vibrant Ann Arbor Fund of the Ann Arbor Area Community Foundation  
Charles and Julia Eisendrath  
Johanna Epstein and Steven Katz  
Harvey and Elly Falit  
*in honor of Carol and Norman Schnall*  
Margaret and John Faulkner  
Esther Floyd  
Food Art  
Dan and Jill Francis  
Judy and Paul Freedman  
Leon and Marcia Friedman  
Bill and Boc Fulton  
Zita and Wayne Gillis  
Barbara and Fred Goldberg #  
Cozette T. Grabb  
Nicki Griffith  
Kenneth and Margaret Guire #  
Marys Hamill  
Jeff Hannah and Nur Akcasu  
Randall L. and Nancy Caine Harbour #  
Clifford and Alice Hart  
Larry Hastie  
Daniel and Jane Hayes  
David W. Heleniak #  
Sivana Heller  
Eileen and Saul Hyman  
IATSE Local 395  
Jean Jacobson  
Janet and Wallie Jeffries  
Timothy and Jo Wiese Johnson  
Liz Johnson  
Kent and Mary Johnson  
*in memory of Dr. Mel Barclay*  
Mark and Madolyn Kaminski  
Richard and Sylvia Kaufman  
*in honor of Ken Fischer*  
James A. Kelly and Mariam C. Noland  
Carolyn and Jim Knake  
Michael J. Kondziolka and Mathias-Philippe Badin  
Barbara and Michael Kratchman  
Donald and Jeanne Kunz  
Ann Martin and Russ Larson  
Jerry and Marion Lawrence  
John K. Lawrence and Jeanine A. DeLay

David Leichtman and Laura A. McGinn  
Richard LeSueur  
Fran Lyman  
Tim and Lisa Lynch  
John and Cheryl MacKrell  
Edwin and Cathy Marcus  
Nancy and Philip Margolis  
Debbie and David Marmor  
*in honor of Karen and David Stutz*  
W. Harry Marsden  
Howard L. Mason  
Mary M. Matthews  
Jerry A. and Deborah Orr May #  
W. Joseph McCune and Georgiana M. Sanders  
Griff and Pat McDonald  
James H. McIntosh and Elaine K. Gazda  
Margaret McKinley  
Bert and Kathy Moberg  
Lester and Jeanne Monts  
Moscow Philanthropic Fund  
John and Ann Nicklas  
Susan and Mark Orringer #  
Elisa A. Ostafin  
Lisa and John Peterson  
Pfizer Foundation  
Juliet S. Pierson  
Susan Pollans and Alan Levy  
Stephen and Bettina Pollock  
Rick and Mary Price  
Jeff Reece  
Ray and Ginny Reilly  
Malverne Reinhart  
Huda Karaman Rosen  
Victor Strecher and Jeri Rosenberg  
Herbert and Ernestine Ruben  
Craig and Jan Ruff  
Karem and Lena Sakallah  
Maya and Stephanie Savarino  
Erik and Carol Serr  
Janet Shatusky  
Alyce Sigler  
Carl Simon and Bobbi Low  
Nancy and Brooks Sitterley  
Michael Sivak and Enid Wasserman  
Barbara Furin Sloat  
Ren and Susan Snyder  
Linh and Dug Song  
Cheryl Soper  
Michael B. Staebler and Jennifer R. Poteat  
Ted St. Antoine  
Virginia E. Stein #  
Eric and Ines Storhok  
Dalia and Stan Strasius  
Charlotte Sundelson  
Louise Taylor  
Louise Townley  
Jeff and Lisa Tulin-Silver  
Susan B. Ullrich #  
Jack and Marilyn van der Velde  
Douglas and Andrea Van Houweling  
Joyce Watson and Marty Warshaw  
Harvey and Robin Wax  
*includes a gift in honor of Penny Fischer*

Lauren and Gareth Williams  
Max and Mary Wisgerhof  
Charles Witke and Aileen Gatten  
The Worsham Family Foundation  
Thomas and Erin Zurbuchen #

### **BENEFACTORS (\$500 – \$999)**

Roger Albin and Nili Tannenbaum  
Christine W. Alvey  
Neil P. Anderson  
Anonymous  
Sandy and Charlie Aquino  
Penny and Arthur Ashe  
Laurence R. and Barbara K. Baker  
Reg and Pat Baker  
Barbara and Daniel Balbach #  
David and Monika Barera  
Astrid B. Beck  
Rodney and Joan Bentz  
James K. and Lynda W. Berg  
Peggy and Ramon Berguer  
*in honor of Jim and Nancy Stanley*  
L. S. Berlin and Jean McPhail  
Raymond and Janet Bernreuter  
William and Ilene Birge  
Ron and Mimi Bogdasarian  
R.M. Bradley and C.M. Mistretta  
Joel Bregman and Elaine Pomeranz  
Charles C. Bright and Susan Crowell  
Susan and Oliver Cameron  
Thomas and Colleen Carey  
Brent and Valerie Carey  
Jack and Susan Carlson  
Barbara Mattison Carr  
Andrew Caughey MD and Shelly Neitzel MD  
Tsun and Siu Ying Chang  
Samuel and Roberta Chappell  
John and Camilla Chiapuris  
Reginald and Beverly Ciokajlo  
Mark Clague and Laura Jackson  
Judy and Malcolm Cohen  
Jon Cohn and Daniela Wittmann  
Arnold and Susan Coran  
Paul Courant and Marta Manildi  
Katherine and Clifford Cox  
Clifford and Laura Craig #  
John and Mary Curtis  
Roderick and Mary Ann Daane  
Linda Davis and Bob Richter  
*in honor of Ken Fischer*  
David Deromedi  
*in memory of Nancy Deromedi*  
Andrzej and Cynthia Dlugosz  
Karen Yamada and Gary Dolce  
Ed and Mary Durfee  
James F. Eder  
Barbara and Tony Eichmuller  
Alan S. Eiser  
Phil and Phyllis Fellin  
Carol Finerman  
Susan Fisher  
Scott and Janet Fogler  
David Fox and Paula Bockenstedt  
Christopher Friese  
*in honor of Jerry Blackstone*  
Carol Gagliardi and David Flesher

Tom Gasloli  
Renate Gerulaitis  
David and Maureen Ginsburg #  
Ken Gottschlich and Martha Pollack  
Christopher and Elaine Graham  
Martha and Larry Gray  
Dr. John and Renee M. Greden  
Drs. Patricia and Stephen Green  
Raymond Grew  
Werner H. Griik  
*in memory of Warren L. Hallock*  
Steven and Sheila Hamp  
Alan Harnik and Prof Gillian Feeley-Harnik  
Martin D. and Connie D. Harris  
Dr. Don P. Haefner and Dr. Cynthia J. Stewart  
Helen C. Hall  
Stephen Henderson  
Kay Holsinger and Douglas C. Wood  
Jim and Colleen Hume  
Ann D. Hungerman  
Isosciences, L.L.C.  
Hank and Karen Jallo  
Mattias Jonsson and Johanna Eriksson  
Don and Sue Kaul  
David H. and Gretchen Kennard  
John Kennard and Debbi Carmody  
Paul and Dana Kissner  
Jean and Arnold Kluge  
Barbara and Ronald Kramer  
Mary L. Kramer  
*in honor of Ken Fischer*  
Gary and Barbara Krenz  
Jane Fryman Laird  
Joan and Melvyn Levitsky  
Jennifer Lewis and Marc Bernstein  
James and Jean Libs  
Marty and Marilyn Lindenauer  
Rod and Robin Little  
Joan Lowenstein and Jonathan Trobe  
Brigitte Maassen  
William and Jutta Malm  
Melvin and Jean Manis  
Susan Martin  
Judythe and Roger Maugh  
Martha Mayo and Irwin Goldstein  
Margaret and Harris McClamroch  
Jordan McClellan  
Bill and Ginny McKeachie  
Semyon and Terry Meerkov  
Bernice and Herman Merte  
Fei Fei and John Metzler  
Lee Meyer  
Dr. James M. Miller and Dr. Rebecca H. Lehto  
Lewis and Kara Morgenstern  
Lisa and Steve Morris  
Brian and Jacqueline Morton  
Drs. Louis and Julie Jaffee Nagel  
Marylen S. Oberman  
Elizabeth Ong  
M. Joseph and Zoe Pearson  
Jean and Jack Peirce  
Wesen and William Peterson  
Diana and Bill Pratt  
Wallace and Barbara Prince



Peter Raitlon and Rebecca Scott  
 Marnie Reid  
 Doug and Nancy Roosa  
 David Lampe and Susan Rosegrant  
 Stephanie Rosenbaum  
 Richard and Edie Rosenfeld  
 Nancy Rugani  
 Linda and Leonard Sahn  
 Mariam Sandweiss  
*in memory of Leon Cohen*  
 Ashish and Norma Sarkar  
 Christopher Kendall and Susan Schilperoort  
 David Schmidt and Jane Myers  
 Ann and Tom Schriber  
 Matthew Shapiro and Susan Garetz  
 Bruce M. Siegan  
 Edward and Kathy Silver  
 Sue and Don Sinta  
 Cynthia Sorensen and Henry Rueter  
 Linda Spector and Peter Jacobson  
 Leslie Stainton and Steven Whiting  
 Allan and Marcia Stillwagon  
 Nancy Barbas and Jonathan Sugar  
 Sandy Talbott and Mark Lindley  
 Doris H. Terwilliger  
 Ted and Eileen Thacker  
 Claire Turcotte  
 Joyce Urba and David Kinsella  
 Erika Nelson and David Wagener  
 Elizabeth A. and David C. Walker  
 Arthur and Renata Wasserman  
 Deborah Webster and George Miller  
 Lyndon Welch  
*in memory of Angela Welch*  
 James B. White and Mary F. White  
 Kathy White #  
 Iris and Fred Whitehouse  
 Diane Widzinski  
 Thomas K. Wilson  
 Lawrence and Mary Wise  
 Dr. and Mrs. Robert Wolf  
 Mary Jean and John Yablonky  
 Richard and Kathryn Yarmain  
 Thomas and Karen Zelnik

**ASSOCIATES  
 (\$250–\$499)**

Judith Abrams  
 Jan and Sassa Akervall  
 Gordon and Carol Allardyce  
 James and Catherine Allen  
 Catherine M. Andrea  
 Ann Arbor Area Community Foundation  
 Anonymous  
 Bernard and Raquel Agranoff  
 Dr. Diane M. Agresta  
 Helen and David Aminoff  
 Ralph and Elaine Anthony  
 Lisa and Scott Armstrong  
 Eric and Nancy Aupperle  
 Rosemary and John Austgen  
 Robert and Mary Baird  
 Pat Bantle

Barbara Barclay  
 Frank and Lindsay Tyas Bateman  
 Kenneth and Eileen Behmer  
 Christina Bellows and Joe Alberts  
 Helen V. Berg  
 Corry and Gahl Berkooz  
 Dan Berland and Lisa Jevens  
 Barbara and Sheldon Berry  
 Maria Beye  
 Mary E. Black  
 Jerry and Dody Blackstone #  
 Judy Bobrow and Jon Desenberg  
 Mr. Mark D. Bomia  
 Joel Bregman and Elaine Pomeranz  
 Gloria D. Brooks  
 Morton B. and Raya Brown  
 Tom and Lori Buiteweg  
 Jonathan and Trudy Bulkley  
 Jim and Cyndi Burnstein  
 Tony and Jane Burton  
 Jenny and Jim Carpenter  
 Dennis J. Carter  
 Susan Carter  
 Joan and Mark Chesler  
 Laurence Cheung  
 Hilary Cohen  
 Wayne and Melinda Colquitt  
 Dr. Lisa D. Cook  
 Katharine Cosovich  
 Susan Bozell Craig  
 Jean Cunningham and Fawwaz Ulabi  
 Marylee Dalton and Lynn Drickamer  
 Connie D'Amato  
 Sunil and Merial Das  
 Art and Lyn Powrie Davidge #  
*in memory of Gwen and Emerson Powrie*  
 Ed and Ellie Davidson  
 John Debbink  
 David L. DeBruyn  
 Margaret Delaney  
 Kenneth Wisinski and Linda Dintenfass  
 Paul and Annemarie Dolan  
 Elizabeth Duell  
 Don and Kathy Duquette  
 Swati Dutta  
 Richard and Myrna Edgar  
 Gloria Edwards  
 Morgan and Sally Edwards  
 Charles and Julie Ellis  
 Thomas Fabiszewski  
 Kay Felt  
 Jeff Fessler and Sue Cutler  
 Herschel and Adrienne Fink  
 Harold and Billie Fischer  
 Frederick and Kathleen Fletcher  
 Jessica Fogel and Lawrence Weiner  
 Lucia and Doug Freeth  
 Susan Froelich and Richard Ingram  
*in memory of Eugene O. Ingram*  
 Philip and Renée Woodten Frost  
 Charles and Janet Garvin  
 Sandra Gast and Greg Kolecki  
 Bob and Julie Gates

Michael Gatti and Lisa Murray  
 Prof. Beth Genne and Prof. Allan Gibbard  
 Chris Genteel and Dara Moses  
 J. Martin Gillespie and Tara Gillespie  
 Google Inc.  
 Mr. and Mrs. Charles and Janet Goss  
 Marla Gousseff  
 Michael L. Gowing  
 Jenny Graf  
 Jerry M. and Mary K. Gray  
 Richard and Linda Greene  
 Linda and Roger Grekin  
 Carl Goldberg  
 George and Mary Haddad  
 Drs. Erik and Dina Hanby  
 Susan R. Harris  
 J. Lawrence Henkel and Jacqueline Stearns  
 Therese and Alfred Hero  
 Lorna and Mark Hildebrandt  
 Perry Irish Hodgson  
 Timothy Hofer and Valerie Kivelson  
 Diane S. Hoff #  
 Daniel Hoffman  
 James S. and Wendy Fisher House #  
 Gaye Humphrey  
 Harold Ingram #  
 Mark and Linda Johnson  
 Mr. Lawrence and Mrs. Ruth Jones  
 Janet and Jerry Joseph  
 Don and Nancy Kaegi  
 Monica and Fritz Kaenzig  
 Angela Kane  
 Mark and Carol Kaplan  
 E. and M. Katz  
 Fred and Susan Kellam  
 Charles Kelly  
 Nancy Keppelman and Michael Smerza  
 Dan and Freddi Kilburn  
 Laurence King and Robyn Frey-King  
 Web and Betty Kirksey  
 Michael Koen  
 Rosalie and Ron Koenig  
 Joseph and Marilyn Kokoszka  
 Bert and Geraldine Kruse  
 Frank and Kim La Marca  
 Donald John Lachowicz  
 Tim and Kathy Laing  
 Linda Langer  
 Anne-Marie and Anthony La Rocca  
 John and Theresa Lee  
 James Leija and Aric Knuth  
 Anne and Harvey Leo  
 John Lesko and Suzanne Schluederberg  
 Rachelle Lesko  
 Gloria Kitto Lewis  
 Jacqueline Lewis  
*in honor of Ken Fischer*  
 Michael and Debra Lisull  
 Dr. Len and Betty Lofstrom  
 Julie M. Loftin

Barbara and Michael Lott  
 Bruce Loughry  
 Martin and Jane Maehr  
 Susan C. Guszynski and Gregory F. Mazure  
 Joanna McNamara and Mel Guyer  
 Frances McSparran  
 Gerlinda S. Melchiori  
 Warren and Hilda Merchant  
 Dennis J. Merrick and Judith H. Mac  
 Scott and Julie Merz  
 Louise Miller  
 Gene and Lois Miller  
 John and Sally Mitani  
 Candy Mitchell  
 Arnold and Gail Morawa  
 Trevor Mudge and Janet Van Valkenburg  
 Gavin Eadie and Barbara Murphy  
 Thomas J. Nelson  
 Gayl and Kay Ness  
 Richard and Susan Nisbett  
 Eugene and Beth Nissen  
 Laura Nitzberg  
 Christer and Outi Nordman  
 Arthur S. Nusbaum  
 Constance Osler  
 Mohammad and J. Elizabeth Othman  
 Karen Pancost  
 William and Hedda Panzer  
 Donna D. Park  
 Karen Park and John Beranek  
 Lisa Payne  
 Sumer Pek and Mickey Katz-Pek  
 Melvin and Sharon Peters  
 Margaret and Jack Petersen  
*in honor of Jerry Blackstone*  
 Sara Jane Peth  
 Marianne Udow-Phillips and Bill Phillips  
 Donald and Evonne Plantinga  
 Joyce Plummer  
 Thomas S. Porter #  
 Nancy Powell  
 Anne Preston  
 Karen and Berislav Primorac

Floretta Reynolds  
 Guy and Kathy Rich  
 Douglas and Robin Richstone  
 Jessica C. Roberts  
 Dr. and Mrs. Jonathan Rodgers  
 Dr. Stephen Rosenblum and Dr. Rosalyn Sarver  
 Rosemarie Haag Rowney  
 Carol Rugg and Richard Montmorency  
 Eugene Saenger, Jr.  
 Amy Saldinger and Robert Axelrod  
 Irv and Trudy Salmeen  
*in honor of Pat Chapman*  
 Michael and Kimm Sarosi  
 Albert J. and Jane L. Sayed  
 Jochen and Helga Schacht  
 Mark Schlissel  
 Betina Schlossberg  
 Regan Knapp and John Scudder  
 Larry and Bev Seiford  
 Suzanne Selig  
 Ms. Harriet Selin  
 Elvera Shappirio  
 Laurence Shear  
 William and Christina Shell  
 Patrick and Carol Sherry  
 George and Gladys Shirley  
 Jean and Thomas Shope  
 Andrew and Emily Shuman  
 Nina Silbergleit  
 Terry M. Silver  
 Robert and Elaine Sims  
 Scott and Joan Singer  
 Loretta Skewes  
 Carl and Jari Smith #  
 Dr. and Mrs. Gregory Smith  
 Robert W. Smith  
 Greg Grieco and Sidonie Smith  
 David and Renate Smith  
 Hanna Song and Peter Toogood  
 Becki Spangler and Peyton Bland  
 Doris and Larry Sperling  
 Jim Spevak  
 Gretta Spier and Jonathan Rubin  
 Jeff Spindler

Paul and Judith Spradlin  
 Daniel and Susan Stepek  
 James L. Stoddard  
 Cynthia Straub  
 Brian and Lee Talbot  
 May Ling Tang  
 Carolyn and Frank Tarzia  
 Eva Taylor  
 Denise Thal and David Scobey  
 Bill and Marlene Thomas  
 John G. Topliss  
 Donald Tujaka  
 Alvan and Katharine Uhle  
 Karla and Hugo Vandersypen  
 Michael Van Tassel  
 James and Barbara Varani  
 Virginia O. Vass  
 Brad L. Vincent  
 Jack Wagoner, M.D.  
 Mary Walker and David Linden  
 Charles R. and Barbara H. Wallgren #  
 Bob and Liina Wallin  
 Jo Ann Ward  
 Alan and Jean Weamer  
 Richard and Madelon Weber #  
 MaryLinda and Larry Webster  
 Mr. and Mrs. Richard Weiermiller  
 Jack and Carol Weigel  
 Lisa and Steve Weiss  
 Mary Ann Whipple  
 Nancy P. Williams  
*in honor of Katie Stebbins*  
 Robert J. and Anne Marie Willis  
 John and Pat Wilson  
 Robert Winfield  
 Beth and I. W. Winsten  
 Steven and Helen Woghin  
 Charlotte A. Wolfe  
 Frances Wright #  
 Gail and David Zuk

\*Due to space restraints, tribute gifts of \$1-\$249 will be recognized in the online donor list at ums.org.

## Ad Index

2	Ann Arbor Area Community Foundation	26	Michigan Psychoanalytic Institute and Society
34	Ann Arbor Symphony Orchestra	28	Michigan Radio
5	Center for Plastic and Reconstructive Surgery	28	Miller, Canfield, Paddock and Stone, P.L.C.
8	Charles Reinhart Co. Realtors	30	Performance Network
8	Cottage Inn	32	Red Hawk and Revive + Replenish
8	Donaldson & Guenther	30	Retirement Income Solutions
10	Dykema Gossett	22	Silver Maples
10	Gilmore Keyboard Festival	32	Smith Haughey Rice & Roegge
22	Heinz C. Prechter Bipolar Research Fund	4	U-M Alumni Association
21	Honigman Miller Schwartz and Cohn LLP	IBC	WEMU
10	Iris Dry Cleaners	32	WGTE
26	Jaffe, Raitt, Heuer & Weiss PC	30	WKAR
26	Knight's Downtown		

IBC = Inside back cover



VICTORS FOR  
MICHIGAN

Be a victor for  
excellence



Invest in the future of our community  
by supporting UMS today.

**Please send your gift to:**  
UMS Development  
Burton Memorial Tower  
881 North University Avenue  
Ann Arbor, MI 48109-1011

or call 734.764.8489 or go to [ums.org/support](http://ums.org/support)

**National Public Radio mixed with local public knowledge.**

|  
—  
**89.1**

Public radio from Eastern Michigan University

npr + jazz + blues + local news [wemu.org](http://wemu.org)

**Jazz is alive. And this is its house number.**

|  
—  
**89.1**

Public radio from Eastern Michigan University

npr + jazz + blues + local news [wemu.org](http://wemu.org)

**What crosstown rivalry?**

|  
—  
**89.1**

Proud to be UMS's media partner for the 2015-16 season

[wemu.org](http://wemu.org)