

1 3 7 T H S E A S O N

15





U M S . O R G

U M S L O B B Y . O R G

U M S R E W I N D . O R G

U M S L O B B Y



Did you like it? Did it move you? Did it change you?
Did it disappoint? Tell us what you think at umslobby.org
or any of our social media spaces.

Be Present

UMS unleashes the power of the performing arts in order to engage, educate, transform, and connect individuals with uncommon experiences. The Fall 2015 season is full of exceptional, world-class, and truly inspiring performances.

Welcome to the UMS experience. We're glad you're present.
Enjoy the performance.





When you attend a UMS performance,
you're part of a larger equation:

nonprofit **ARTS**
+ **CULTURE**
= **ECONOMIC**
PROSPERITY
in the greater Ann Arbor Area
\$100 million annually

Together, we invest in our local community's vibrancy.



Ann Arbor Area
Community Foundation

aaacf.org



Welcome to this UMS performance. We're delighted that you're joining us in our 137th season, one of the most exciting, diverse, and engaging in our history. In addition to what you'll see on stage, UMS has a robust education program serving people of all ages and also oversees the 175-voice Grammy Award-winning UMS Choral Union. We invite you to learn more about all of our programs at ums.org and to become engaged with UMS, whether it's by making a gift to our campaign, joining us at the Ann Arbor Y for a community dance class with a visiting dance company, or buying a ticket to a performance. We're always eager to hear from you, too! Join the conversation and share your thoughts after a performance at umslobby.org. If you have any comments, questions, or concerns, please be in touch with UMS President Ken Fischer at 734.647.1174 or at kenfisch@umich.edu. We hope to see you again soon.



A handwritten signature in black ink that reads "Mark Schlissel".

**MARK
SCHLISSSEL**

*President,
University of Michigan*



A handwritten signature in black ink that reads "Ken Fischer".

**KENNETH C.
FISCHER**

UMS President



A handwritten signature in black ink that reads "Stephen Forrest".

**STEPHEN R.
FORREST**

*Chair,
UMS Board of Directors*

For those who leave Michigan, but for whom Michigan never leaves.



This is where you belong. Join today at umalumni.com



To reveal the age
you feel,
stay on
your toes.

Table of Contents

6	2015-16 Season Calendar
9	Education
11	History
12	Leadership Donors
14	Corporate Champions
20	Foundation, Government, & University Support
23	People
31	Generous Donors
40	Ad Index



CENTER FOR PLASTIC &
RECONSTRUCTIVE SURGERY

face ♣ body ♣ breast ♣ skin

Paul Izenberg, MD | David Hing, MD

Richard Beil, MD | Daniel Sherick, MD

Rachel Streu, MD

Art and medicine
performing in concert

www.cprs-aa.com | 734.712.2323

2015-16 Season Calendar

AUGUST

8/30
NT Live in HD:
Arthur Miller's
A View from the Bridge

SEPTEMBER

9/11
UMS Season Opener!
My Brightest Diamond
with the Detroit Party
Marching Band and
special guest Shigeto

9/16
NT Live in HD: George
Bernard Shaw's
Man and Superman

9/17
Audra McDonald

9/27
Sphinx Virtuosi
with the Catalyst Quartet
and Gabriela Lena Frank,
piano

OCTOBER

10/3
L-E-V

10/7
The Gloaming

10/9-11
New York Philharmonic
Alan Gilbert, conductor

10/14-17
Antigone by Sophokles
Starring Juliette Binoche
Directed by Ivo van Hove

10/18
RSC Live in HD:
Shakespeare's *Othello*

10/21
Abdullah Ibrahim &
Ekaya

10/23-24
Sankai Juku

10/27
Hubbard Street Dance
Chicago

10/29
Chicago Symphony
Orchestra
Riccardo Muti, conductor

10/30
Tenebrae

NOVEMBER

11/6
Danish String Quartet

11/8
Chucho Valdés:
Irakere 40

11/14
Yousouf N'Dour and
Super Étoile de Dakar

11/15
NT Live in HD:
Shakespeare's *Hamlet*

11/20
Leif Ove Andsnes, piano

DECEMBER

12/2
Takács Quartet

12/5-6
Handel's Messiah
UMS Choral Union
Ann Arbor Symphony
Scott Hanoian, conductor

12/13
RSC Live in HD:
Shakespeare's *Henry V*

12/17-1/3
A Christmas Carol
National Theatre of
Scotland
Directed by Graham
McLaren

JANUARY

1/8
What's in a Song?
A song recital evening
curated by Martin Katz

1/10
Jamie Barton,
mezzo-soprano

1/11
Royal Philharmonic
Orchestra
Pinchas Zukerman,
conductor and violin

1/20
Jazz at Lincoln Center
Orchestra with
Wynton Marsalis

1/21-23

Young Jean Lee's
Theater Company
*Untitled Feminist Show &
Straight White Men*

1/22

Chamber Music Society
of Lincoln Center

1/27

Ms. Lisa Fischer and
Grand Baton

FEBRUARY

2/2

Tanya Tagaq in concert
with *Nanook of the North*

2/5

Taylor Mac
*A 24-Decade History
of Popular Music:
1960s-1980s*

2/6

Igor Levit, piano

2/13

Camille A. Brown &
Dancers

2/14

UMS Choral Union and
Organ
Love is Strong as Death
Scott Hanoian, conductor

2/16-20

Sir Andrés Schiff, piano
*The Last Sonatas
of Haydn, Mozart,
Beethoven, and Schubert*

2/19

The Triplets of Belleville
Benoit Charest,
composer-conductor

MARCH

3/5

The Chieftains

3/11-12

Nufonia Must Fall
Kid Koala, DJ, producer,
and graphic novelist

3/15

*Apollo's Fire & Apollo's
Singers*
Bach's St. John Passion

3/19

Montreal Symphony
Kent Nagano, conductor
Daniil Trifonov, piano

3/26

Gil Shaham, violin
with original films by
David Michalek
Bach Six Solos

3/31-4/3

American Ballet Theatre
The Sleeping Beauty

APRIL

4/1

Mariachi Vargas de
Tecalitlán

4/8

Jerusalem String Quartet

4/14

Mnozil Brass

4/15

*Zafir: Musical Winds
from North Africa to
Andalucía*
Simon Shaheen, music
director

4/16

Bavarian Radio Orchestra
Mariss Jansons, conductor
Leonidas Kavakos, violin

4/23

The Bad Plus
Joshua Redman

Reinhart

ReinhartRealtors.com

Proudly Supports
The University
Musical Society

734-747-7888

Charles Reinhart Company Realtors 

The real estate leader in Ann Arbor for over 40 years



THE ORIGINAL
Cottage Inn

Ann Arbor's Original Pizza Spot. Stop in after the show with your ticket stub to receive a free cheesecake appetizer!

512 E. William Ann Arbor MI 48104



Dentistry as a Fine Art

Unparalleled Attention to Detail
We blend creativity and expertise to create beautiful, natural-looking smiles.

Photography © Kirk Donaldson

Sedation | Implants | Cosmetics | Complex Restoration | Sleep Apnea

 **DONALDSON
& GUENTHER**

734.971.3450

dgdent.com

3100 Eisenhower, Ann Arbor MI 48108

Education

EDUCATIONAL
EXPERIENCES
FOR
EVERYONE



At UMS, our mission goes beyond performance. We want you to create, to explore, and to experience extraordinary new things. That is why we offer a fascinating lineup of artist Q&As, conversations, workshops, and interactive experiences, each designed to bring you closer to performance and creation, and to expand your comfort zone. If you want to experience something new, different, highly engaging, and eye-opening, we invite you to participate in events inside and outside of the theater.



[UMS.ORG/LEARN](https://ums.org/learn)

Photo: You Can Dance with Abraham.in.Motion in March 2015. Photographer: Peter Smith Photography.



Bravo!

The law firm of Dykema
applauds the University
Musical Society for bringing
the spirit of harmony to our
community with one sound
performance after another.

Delivering exceptional
service to individuals and
businesses since 1926.

DYKEMA

www.dykema.com



**See, touch and smell the
Green Earth difference.
Non-toxic**

An environmentally friendly new
way of dry cleaning.



2268 S. Main St.

Located by Busch's on the corner of
S. Main St. and Ann Arbor-Saline Rd.

734-998-1245

www.irisdrycleaners.com

Daniil Trifonov, 2014, Gilmore Keyboard Festival © Chris McGuire



Pedal to the metal.

GILMORE KEYBOARD FESTIVAL



APRIL 29 TO MAY 14, 2016
THEGILMORE.ORG

Tradition Builds the Future



In our 137th season, we continue to showcase traditional performances alongside contemporary artists for an offering that is unlike anything available in the Midwest. UMS grew from a group of local members of the University and townspeople in the 1870s who gathered together for the study of Handel's *Messiah*. Led by Professor Henry Simmons Frieze and conducted by Professor Calvin Cady, the group assumed the name The Choral Union. Many Choral Union members were also affiliated with the University, and the University Musical Society was established soon after in December 1880.

Since that first season, UMS has expanded greatly and now presents the very best from a wide spectrum of the performing arts: internationally renowned recitalists and orchestras, dance and chamber ensembles, jazz and global music performers, and contemporary stagework and classical theater. Through educational programming, the commissioning of new works, youth programs, artist residencies, and collaborative projects, we continue to strengthen our reputation for artistic distinction and innovation.

Photo: Hill Auditorium in 1928.

Leadership Donors

We recognize the donors who have made or completed multi-year campaign commitments of \$100,000 or more during the last year. In addition, we recognize the individuals who have committed \$50,000 or more in support of the 2015–16 season.



**BERTRAM ASKWITH (1911-2015)
PATTI ASKWITH KENNER**

“The arts have made a significant difference in my life and my daughter’s life. I want every U-M student to have the opportunity to experience the impact of the performing arts at UMS. This is why I am offering every first and second year student one free ticket – Bert’s Ticket – to introduce them to a cultural experience at Michigan.”



DALLAS AND SHARON DORT

“It could almost be said that we chose to move to Ann Arbor post-career because of UMS. Who wouldn’t want to live in a city that can attract such talent, and fill a 3,500-seat hall with so many enthusiastic audiences? Now, we enjoy each season all the more because, as donors, we’re an active part of UMS. What a privilege!”



STEVE AND ROS FORREST

“As students, we benefited from low-cost student tickets, fostering a lifelong love of the performing arts. Our donation will help to ensure that affordable tickets will be available to today’s students.”



ILENE FORSYTH

“I want to help chamber music flourish in Ann Arbor. My support for the series began with its inception in 1963 and I continue to believe that these concerts help nurture our intellectual life as they stimulate and refresh us.”



MAXINE AND STUART FRANKEL

"We are delighted to partner with UMS for the fifth year of the Renegade Series. Supporting Renegade programming allows UMS to provide experiences for the curious, adventurous, and experimental audience member — allowing us to challenge our existing beliefs and push our own boundaries."



EUGENE AND EMILY GRANT

"We are proud to support UMS and the many programs they offer University students. It is great to know that students will have access to the greatest performing artists from around the world. The arts are an important part of a Michigan education."



RICHARD AND SUSAN GUTOW

"We enjoy classical and contemporary music, theater, and dance, and feel privileged to add our endowment to that of others to help ensure that UMS continues to present adventuresome performances to the university and Southeast Michigan communities."



PHIL AND KATHY POWER

"Thousands and thousands of lives have been made richer and more profoundly aware through the music, theater, and dance offerings of UMS. It's hard to imagine another institution that has had such an enormous impact on so many over such a long time. UMS's work is enormously valuable and deserves generous support from anybody who believes in the liberating power of the performing arts."

Corporate Champions

We thank the following businesses for their commitments of \$5,000 or more for the 2015–16 season.



DOUGLASS R. FOX

President, Ann Arbor Automotive

“We at Ann Arbor Automotive are pleased to support the artistic variety and program excellence given to us by UMS.”



TIMOTHY G. MARSHALL

President and CEO, Bank of Ann Arbor

“We take seriously our role as a community bank. While there have been sizable cuts in arts funding over the years by both the private and public sectors, Bank of Ann Arbor is delighted to continue to sponsor UMS year after year. We are firm believers that the arts are vital to the vibrancy of our cities, both culturally and economically.”



LARRY BRYANT

Ann Arbor Region President, Comerica Bank

“As a company with a long-standing commitment to diversity and our community, Comerica is proud to continue its support of UMS. We salute UMS on its efforts to enrich our community by showcasing the talents of performing artists from around the world. Congratulations to the leader and best in the performing arts.”



FAYE ALEXANDER NELSON

President, DTE Energy Foundation

“The DTE Energy Foundation is pleased to support exemplary organizations like UMS that inspire the soul, instruct the mind, and enrich the community.”





NANCY AND RANDALL FABER

Founders, Faber Piano Institute

“We are proud to support UMS in its tradition of program excellence and outreach that enriches our thoughts, our families, and our community.”



JAMES G. VELLA

President, Ford Motor Company Fund

“Experiencing the world through music and the arts makes us better as individuals while bringing us together as a community. We are proud to support UMS and the important role it plays in enriching our lives.”



Ford Motor Company Fund



DAVID N. PARSIGIAN

Ann Arbor Office Managing Partner, Honigman Miller Schwartz and Cohn LLP

“In our firm’s tradition of supporting major cultural institutions, Honigman has been a long-time supporter of UMS. Our Ann Arbor office is proud to carry on that tradition on behalf of all of our attorneys, especially those who work and live in the Ann Arbor area. We all view the exceptional cultural experiences that UMS provides as key to the success of our community and our firm.”

HONIGMAN

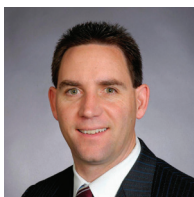


MOHAMAD ISSA

Director, Issa Foundation

“The Issa Foundation is sponsored by the Issa family, which has been established in Ann Arbor for the last 30 years, and is involved in local property management as well as area public schools. The Issa Foundation is devoted to the sharing and acceptance of culture in an effort to change stereotypes and promote peace. UMS has done an outstanding job bringing diverse and talented performers to Ann Arbor.”

ISSA FOUNDATION



KIRK ALBERT

Michigan Market President, KeyBank

“KeyBank remains a committed supporter of the performing arts in Ann Arbor and we commend UMS for bringing another season of great performances to the community. Thank you, UMS, for continuing the tradition.”

KeyBank



MICHAEL CONLIN

Director of Business Development, Level X Talent

“Level X Talent enjoys supporting UMS and its ongoing success bringing world-class artistic talent to the community. Please join us in congratulating UMS. As with the arts, consistently finding and attracting exceptional talent in Advanced Technology can be difficult. Level X Talent partners with our clients to meet that challenge.”



KEITH ALLMAN

President and Chief Executive Officer, Masco

“Masco is proud to support UMS and salutes its commitment to providing excellent and diverse programs that spark a lifelong passion for creativity. Thank you, UMS, for allowing all of us to experience the transformative power of the performing arts!”



ALBERT M. BERRIZ

CEO, McKinley, Inc.

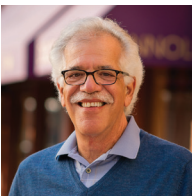
“The success of UMS is based on a commitment to present a diverse mix of quality cultural performances. McKinley is proud to support this tradition of excellence which enhances and strengthens our community.”



THOMAS B. MCMULLEN

President and CEO, McMullen Properties

“In the fifth grade, I began taking cornet lessons from Roger Jacobi, a young man right out of the U-M School of Music who years later would become President of the Interlochen Arts Academy. Roger gave me not only love of music, but also deep appreciation for what UMS does for school kids and adults alike.”



DENNIS SERRAS

Owner, Mainstreet Ventures, Inc.

“As restaurant and catering service owners, we consider ourselves fortunate that our business provides so many opportunities for supporting UMS and its continuing success in bringing internationally acclaimed talent to the Ann Arbor community.”





STEPHEN G. PALMS

Principal, Miller, Canfield, Paddock and Stone, P.L.C.

“Miller Canfield proudly supports UMS for enhancing our quality of life by bringing the unfiltered immediacy of live performing arts to our community.”

MILLER
CANFIELD



TODD CLARK

Regional President, Old National Bank

“At Old National Bank, we’re committed to community partnership. That’s why, last year alone, we funded over \$5 million in grants and sponsorships and our associates donated almost 100,000 volunteer hours. It’s also the reason we’re pleased to once again support UMS as a corporate sponsor for the 2015–16 season.”



RICHARD L. DEVORE

Detroit and Southeast Michigan Regional President, PNC Bank

“PNC Bank is proud to support the efforts of UMS and the Ann Arbor community.”



BROCK HASTIE

Managing Partner, Retirement Income Solutions, Inc.

“With strong roots in the community for more than 30 years, our team of investment advisors is proud to support UMS. We recognize and appreciate UMS’s successful history and applaud the organization’s ongoing commitment to presenting authentic, world-renowned artists to the Ann Arbor community.”



SAVA LELCA

Chief Executive Officer, Savco: Hospitality

“One of Ann Arbor’s greatest assets is UMS, which brings amazing, best-in-class performances to our city season after season. Savco Hospitality is honored to support UMS and its mission of engaging, educating, transforming, and connecting the arts to our community.”





JOE SESI

President, Sesi Lincoln Volvo Mazda

“UMS is an important cultural asset for our community. The Sesi Lincoln Volvo Mazda team is delighted to sponsor such a fine organization.”



JOHN W. STOUT

President, Stout Systems

“Supporting UMS is really a labor of love – love of music and the performing arts and love of arts advocacy and education. Everyone at Stout Systems knows we cannot truly be successful without helping to make our community a better place. It is an honor to be part of the UMS family.”



TOM THOMPSON

Owner, Tom Thompson Flowers

“Judy and I are enthusiastic participants in the UMS family. We appreciate how our lives have been elevated by this relationship.”



OSAMU “SIMON” NAGATA

President, Toyota Motor Engineering & Manufacturing North America, Inc.

“Toyota Technical Center is proud to support UMS, an organization with a long and rich history of serving diverse audiences through a wide variety of arts programming.”



TIFFANY FORD

President, University of Michigan Credit Union

“Thank you to UMS for enriching our lives. The University of Michigan Credit Union is proud to be a part of another great season of performing arts.”





MARK SCHLISSEL

President, University of Michigan

“The University of Michigan is proud to support UMS as a natural extension of our academic enterprise. UMS’s outstanding performances and educational programs add tremendous value for our students, faculty, alumni, and regional community.”



MARSCHALL RUNGE

Executive Vice President for Medical Affairs, University of Michigan, and CEO, University of Michigan Health System

We are proud to partner with UMS for its 2015–16 season. Music improves the quality of life for all of us, and, increasingly, is recognized as an important ingredient for better health.”



Foundation, Government, & University Support

UMS gratefully acknowledges the support of the following private foundations, government agencies, and University of Michigan units:

\$500,000 AND ABOVE

The Andrew W. Mellon Foundation



\$20,000-\$499,000

Anonymous
Charles H. Gershenson Trust



\$5,000-\$19,999

Benard L. Maas Foundation
The Seattle Foundation
University of Michigan Third Century Initiative



SUPPORTING THE ARTS

As a long-time patron of the arts,
Honigman and its Ann Arbor attorneys
are proud to support UMS.

Fernando Alberdi
Christopher A. Ballard
Maurice S. Binkow
Cynthia M. Bott
Anna M. Budde
Thomas W. Forster II
Carl W. Herstein
Richard D. Hoeg
Ann T. Hollenbeck
J. Michael Huget
Barbara A. Kaye

Tara E. Mahoney
Cyril Moscow
Leonard M. Niehoff
David N. Parsigian
Julie Kretzschmer Reitz
Eric J. Sosenko
James E. Stewart
Bea Swedlow
Sara E. Waidelich
Bill Winsten

For more information, please contact
David Parsigian at 734.418.4250 or
DParsigian@honigman.com.

HONIGMAN[®]

WWW.HONIGMAN.COM

Some of the world's most creative minds suffer from one of the most devastating conditions...

Be a source of hope.
Help find a cure for **bipolar disorder**.

What makes a person bipolar, prone to manic highs and depressed lows? We are advancing research on the personalized treatment of this illness that affects close to 6 million Americans.

Make your donation at:
PrechterFund.org/help
1-877-UM-GENES

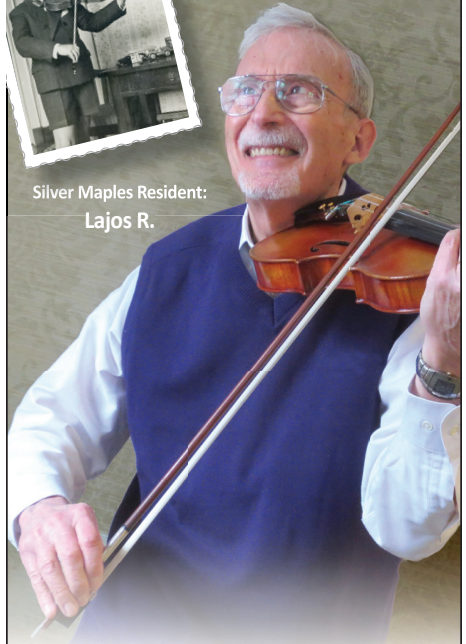


**HEINZ C. PRECHTER
BIPOLAR RESEARCH FUND**
UNIVERSITY OF MICHIGAN



Still Playing

Silver Maples Resident:
Lajos R.



Silver Maples is an active community of interesting and talented individuals, like Lajos, who started playing the violin at age 5 and still enjoys sharing his love of classical music.

Joining our neighborhood opens the door to a new phase of life. From the moment you move in, residents of Silver Maples become friends and family. Come by for a visit and join our VIP wait list.



SILVER MAPLES
of Chelsea

RETIREMENT NEIGHBORHOOD

734.475.4111
SilverMaples.org

Locally-Owned, Non-Profit Jointly Sponsored by
the Chelsea-Area Wellness Foundation and United Methodist
Retirement Communities, Inc.



Audra McDonald

Andy Einhorn / *Music Director and Piano*
Mark Vanderpoel / *Bass*
Gene Lewin / *Drums*

Thursday Evening, September 17, 2015 at 7:30
Hill Auditorium
Ann Arbor

Tonight's performance is sponsored by KeyBank and Essel and Menakka Bailey.

Media partnership is provided by Ann Arbor's 107one and WDET 101.9 FM.

The Steinway piano used in this evening's concert is made possible by William and Mary Palmer.

Audra McDonald records exclusively for Nonesuch Records.

Audra McDonald appears by arrangement with IMG Artists, New York, NY.

PROGRAM

This evening's program will be announced from the stage by Ms. McDonald and will be performed without intermission.

On September 10, UMS received the **National Medal of Arts** from President Barack Obama at the White House. We are deeply honored to be the first university-based presenter to receive this recognition, which is the highest award given to artists and arts patrons by the US government. Please accept our sincerest thanks for your participation and generous patronage, all of which have played a critical role in UMS being recognized at the highest level. Artists tell us time and time again that "UMS audiences are the best" and we wholeheartedly agree. This medal belongs to all of us.

Key Private Bank

investments | trust | banking



working in concert

At Key Private Bank, we understand that your financial life is complex, and we take a holistic approach to your planning needs. We listen to your story, get to know your history, identify your unique financial needs, and create an actionable plan designed to help you grow, preserve, and protect your wealth.

Key Private Bank is people, ideas, and financial instruments, working in concert to provide solutions for your financial well-being.



go to key.com/kpb
call Susan at 734-747-7970

Bank and trust products from KeyBank National Association, Member FDIC and Equal Housing Lender. Investment products are:

**NOT FDIC INSURED • NOT BANK GUARANTEED • MAY LOSE VALUE • NOT A DEPOSIT
• NOT INSURED BY ANY FEDERAL OR STATE GOVERNMENT AGENCY**

Key.com is a federally registered service mark of KeyCorp. ©2012 KeyCorp. **KeyBank is Member FDIC.** ADL3520-17819

UMS ARCHIVES

This evening's performance marks Audra McDonald's sixth appearance under UMS auspices. Ms. McDonald made her UMS debut in March 2000 at the Power Center and most recently appeared in September 2013 at Hill Auditorium with Andy Einhorn and the University Symphony Orchestra led by Kenneth Kiesler, visiting the songbook of George and Ira Gershwin.

This evening's performance marks Andy Einhorn's third UMS appearance, following his UMS debut with Ms. McDonald in November 2011 at Hill Auditorium. UMS also welcomes back Mr. Vanderpoel and Mr. Lewin, who, respectively, make their second and third appearances under UMS auspices.

ARTISTS

AUDRA McDONALD is unparalleled in the breadth and versatility of her artistry as both a singer and an actress. A record-breaking six-time Tony Award winner (*Carousel*, *Master Class*, *Ragtime*, *A Raisin in the Sun*, *The Gershwins' Porgy and Bess*, *Lady Day at Emerson's Bar & Grill*) and one of *Time* magazine's "100 Most Influential People" of 2015, she has also appeared on Broadway in *The Secret Garden*, *Marie Christine* (Tony nomination), *Henry IV*, and *110 in the Shade* (Tony nomination). She returns to the stage in the 2015–16 season as Lottie Gee in *Shuffle Along, Or, The Making of the Musical Sensation of 1921 and All That Followed*. The Juilliard-trained soprano's opera credits include *La voix humaine* and *Send* at Houston Grand Opera, and *Rise and Fall of the City of Mahagonny* at Los Angeles Opera. On television, she was seen by millions as the Mother Abbess in NBC's *The Sound of Music Live!* and played Dr. Naomi Bennett on ABC's *Private Practice*. She has received Emmy nominations for *Wit*, *A Raisin in the Sun*, and her role as official host of PBS's *Live From Lincoln Center*. Other TV credits include *The Good Wife*, *Homicide: Life on the Street*, *Law & Order: Special Victims Unit*, *Having Our Say: The Delany Sisters' First 100 Years*, *The Bedford Diaries*, *Kidnapped*, and the 1999 remake of *Annie*. On film, she has appeared in *Seven Servants*, *The Object of My Affection*, *Cradle Will Rock*, *It Runs in the Family*, *The Best Thief in the World*, *She Got Problems*, *Rampart*, and most recently, *Ricki and the Flash*. A two-time Grammy Award winner and exclusive recording artist for Nonesuch Records, she released her fifth solo album for the label, *Go Back Home*, in 2013.

Ms. McDonald also maintains a major

career as a concert artist, regularly appearing on the great stages of the world and with leading international orchestras.

An ardent proponent of marriage equality and an advocate for at-risk and underprivileged youth, she sits on the boards of Broadway Impact and Covenant House. Of her many roles, her favorites are the ones performed offstage: wife to her husband, actor Will Swenson, and mother to her daughter, Zoe Madeline.

ANDY EINHORN (*music director, piano*) boasts Broadway credits for Rodgers and Hammerstein's *Cinderella* (Original Broadway Cast Recording), *Evita* (OBCR), *Brief Encounter*, *The Light in the Piazza*, and *Sondheim on Sondheim* (OBCR, Grammy nomination). He most recently served as the music director and conductor for the Broadway production of Woody Allen's *Bullets Over Broadway* (OBCR).

His tour work includes *Sweeney Todd*, *The Light in the Piazza*, *Mamma Mia!*, and *The Lion King*. Mr. Einhorn has worked at Goodspeed Opera House, Signature Theatre, Oregon Shakespeare Festival, and PaperMill Playhouse. He was principal vocal coach and pianist for Houston Grand Opera's *An Evening with Audra McDonald* and a double-bill of Poulenc's *La voix humaine* and LaChiusa's *Send*.

Mr. Einhorn has served as music director and pianist for Ms. McDonald since 2011, performing with her at venues including the Philadelphia Orchestra, San Francisco Symphony, Los Angeles Opera, Avery Fisher Hall, and Carnegie Hall. He has also music directed for Barbara Cook at Feinstein's and Toronto's Royal Conservatory of Music.

Other cast albums include *Stage Door Canteen* and Ms. McDonald's newest



release, *Go Back Home*. He served as the music director for HBO's Peabody Award-winning documentary *Six by Sondheim* and music supervisor for *Great Performances'* Peabody Award-winning special *Broadway Musicals: A Jewish Legacy* on PBS. Mr. Einhorn is an honors graduate of Rice University.

MARK VANDERPOEL (bass) is a native of San Diego. He holds a bachelor's degree from the University of California, San Diego, where he studied with Bertram Turetzky, and a master's degree from the California Institute of the Arts. Mr. Vanderpoel is a former member of the San Diego Symphony, as well as various other chamber groups from the area, in addition to ensembles based in the Baja California region of Mexico. His extensive theater credits include *Legally Blonde*, *Rodgers & Hammerstein's Cinderella*, *See What I Wanna See*, *Guys and Dolls*, the PBS special *A Broadway Celebration on In Performance at the White House*, *Jane Eyre*, *Bullets Over Broadway*, and *An American in Paris*. Mr. Vanderpoel's stage and sideman credits include Audra McDonald, Kristin Chenoweth, Kelli O'Hara, Nancy Sinatra, Victoria Clark, Shirley Jones, Sir Cliff Richard, Deborah Voigt, Sandra Bernhard, Clay Aiken, Taylor Hicks, David Johansen, Sigur Rós, Jeff Beck, Richard Klein, and Andrea Bocelli, as well as appearances on the *Late Show with David Letterman* and *America's Got Talent*. Passions include surfing and using his Vitamix.

GENE LEWIN (drums) appears on 34 CDs, with several more soon to be released. His eclectic discography ranges from the modern jazz of Fundementia to the electric-violin pop of GrooveLily. Several straight-ahead jazz projects and singer-songwriter efforts round out the list. Mr. Lewin drums, sings, and composes for GrooveLily, a trio that has been together for 16 years and has toured extensively throughout the US and Canada. While they have morphed through many different musical scenes (and hair styles), they are now focused on creating hybrid musical theater; performances that feel both like concert and story. Mr. Lewin is also active in New York City's jazz scene, performing and recording with many well-respected singers and instrumentalists. He has appeared on CDs with bassists John Patitucci and Scott Colley, guitarists Ben Monder and Steve Cardenas, jazz legend saxophonist George Coleman, and bassist/vocalist Jay Leonhart. Originally an engineering major at Princeton University, Mr. Lewin soon changed paths and returned to school to receive a master's degree from the Manhattan School of Music in 1991. He sends love to his wife, Suzanne, and his sons, Elias and Jacob.



Audra McDonald explains what she loves about Ann Arbor audiences at UMSLobby.org.

TONIGHT'S VICTORS FOR UMS



KeyBank

—

Essel and Menakka Bailey

Supporters of this evening's performance by Audra McDonald.

MAY WE ALSO RECOMMEND...

- 10/9–11 New York Philharmonic (Choral Union, UMS on Film)
- 1/27 Ms. Lisa Fischer and Grand Baton
- 2/5 Taylor Mac (Song Remix, Renegade)

ON THE EDUCATION HORIZON...

- 9/27 Sphinx Virtuosi Tune-In
(Rackham Building, 4th Fl. East Lounge, 3:30 PM)

People

Those who work to bring
you UMS performances
each season



UMS Board of Directors

The UMS Board of Directors is a group of elected volunteers devoted to the performing arts and to our community. Their hard work ensures that UMS is able to offer outstanding performances year after year.

Stephen R. Forrest
Chair

Sarah Nicoli
Vice Chair

Rachel Bendit
Secretary

Tim Petersen
Treasurer

A. Douglas Rothwell
Chair, Corporate Council

Stephen G. Palms
Past Board Chair

Bruce Tuchman
Chair, National Council

Janet Callaway
David Canter
Mark Clague
Lisa D. Cook
Julia Donovan Darlow
Monique Deschaine
Tiffany L. Ford
Katherine Goldberg
Richard F. Gutw
Stephen Henderson
Daniel Herwitz
Joel Howell
Frank Legacki
Donald L. Morelock
Agnes Moy-Sarns
David Parsigian
Sharon Rothwell
Linh Song
Rick Sperling
Victor J. Strecher
Karen Jones Stutz

EX-OFFICIO

Mark S. Schlissel
President, U-M

Martha E. Pollack
Provost, U-M

Aaron P. Dworkin
*Dean, U-M School of
Music, Theatre & Dance*

Jeanice Kerr Swift
*Ann Arbor Public Schools
Superintendent*

Louise Taylor
Chair, UMS Ambassadors

Photo: UMS patrons attend a San Francisco Symphony concert at Hill Auditorium, November 2014;
photographer: Peter Smith Photography.

UMS Senate

The UMS Senate is composed of former members of the Board of Directors who dedicate time and energy to UMS and our community. Their ongoing commitment and gracious support of UMS are greatly appreciated.

Wadad Abed
Michael C. Allemang
Carol L. Amster
Gail Davis-Barnes
Kathleen Benton
Lynda Berg
Richard S. Berger
Maurice S. Binkow
DJ Boehm
Lee C. Bollinger
Charles W. Borgsdorf
Janice Stevens-Botsford
Paul C. Boylan
William M. Broucek
Barbara Everitt Bryant
Robert Buckler
Letitia J. Byrd
Kathleen G. Charla
Mary Sue Coleman
Jill A. Corr
Peter B. Corr
Ronald M. Cresswell
Martha Darling
Hal Davis
Sally Stegeman DiCarlo
Robert F. DiRomualdo
Junia Doan
Al Dodds
James J. Duderstadt
David Featherman
David J. Flowers
George V. Fornero
Maxine J. Frankel
Patricia M. Garcia
Beverly B. Geltner
Christopher Genteel
Anne Glendon
Patricia Green
William S. Hann
Shelia M. Harden
Randy J. Harris
Walter L. Harrison
Norman G. Herbert

Deborah S. Herbert
Carl W. Herstein
David Herzig
Peter N. Heydon
Toni Hoover
Kay Hunt
Alice Davis Irani
Stuart A. Isaac
Thomas E. Kauper
Christopher Kendall
David B. Kennedy
Gloria James Kerry
Thomas C. Kinnear
S. Rani Kotha
Marvin Krislov
F. Bruce Kulp
Leo A. Legatski
Melvin A. Lester
Earl Lewis
Patrick B. Long
Helen B. Love
Cynthia MacDonald
Robert C. Macek
Jeffrey MacKie-Mason
Judythe H. Maugh
Rebecca McGowan
Barbara Meadows
Joetta Mial
Lester Monts
Alberto Nacif
Shirley C. Neuman
Jan Barney Newman
Roger Newton
Len Niehoff
Gilbert S. Omenn
Joe E. O'Neal
Randall Pittman
Phil Power
John D. Psarouthakis
Rossi Ray-Taylor
John W. Reed
Todd Roberts
Richard H. Rogel

Prudence L. Rosenthal
A. Douglas Rothwell
Judy Dow Rumelhart
Maya Savarino
Ann Schriber
Edward R. Schulak
John J.H. Schwarz
Erik H. Serr
Ellie Serras
Joseph A. Sesi
Harold T. Shapiro
George I. Shirley
John O. Simpson
Timothy P. Slottow
Anthony L. Smith
Carol Shalita Smokler
Jorge A. Solis
Cheryl Soper
Peter Sparling
James C. Stanley
Lois U. Stegeman
Edward D. Surovell
James L. Telfer
Susan B. Ullrich
Michael D. VanHermert
Eileen Lappin Weiser
B. Joseph White
Marina v.N. Whitman
Clayton E. Wilhite
Iva M. Wilson
Karen Wolff

UMS National Council

The UMS National Council is comprised of U-M alumni and performing arts enthusiasts across the country committed to supporting, promoting, and advocating for UMS with a focus on ensuring that the performing arts are an integral part of the student experience.

Bruce Tuchman <i>Chair</i>	Maxine Frankel Eugene Grant	Zarin Mehta Jordan Morgan
Andrew Bernstein Kathleen G. Charla Jacqueline Davis Marylene Delbourg- Delphis	Charles Hamlen Katherine D. Hein David Heleniak Patti Kenner Wallis C. Klein	Caroline Nussbaum James A. Read Herbert Ruben James and Nancy Stanley Christian Vesper
John and Betty Edman Janet Eilber Barbara Fleischman	Jerry and Dale Kolins David Leichtman and Laura McGinn	Ann and Clayton Wilhite Stephen R. Forrest <i>Ex-Officio</i>

UMS Corporate Council

The UMS Corporate Council is a group of regional business leaders who serve as advocates and advisors to UMS as we seek to broaden our base of corporate support throughout southeastern Michigan.

A. Douglas Rothwell <i>Chair</i>	Richard L. DeVore Nolan Finley Stephen R. Forrest	Sharon Rothwell Frederick E. Shell Michael B. Staebler James G. Vella
Albert Berriz Bruce Brownlee Robert Buckler Robert Casalou	Michele Hodges Mary Kramer David Parsigian Vivian Pickard	Stephen R. Forrest <i>Ex-Officio</i>

UMS Students

Students in our volunteer internship and work-study program gain valuable experience in all areas of arts management while contributing greatly to UMS's continued success.

Maryam Ahmed Andrew Bader Madisen Bathish Meredith Bobber* Clare Brennan Mysti Byrnes Gabrielle Carels Abigail Choi Catherine Cypert Anna Darnell Kathryn DeBartolomeis Sophia Deery	Trevor Hoffman Annie Jacobson Garret Jones Travis Jones Ayantu Kebede Meredith Kelly Saba Keramati Emily Kloska Caitlyn Koester Bridget Kojima Austin Land Robert Luzynski	Christina Maxwell* Gunnar Moll Tsukumo Niwa* Claire Pegram Evan Saddler* Nisreen Salka Heather Shen Priyanka Srivastava Rachel Stopchinski Edward Sundra Isaiah Zeavin-Moss <i>*21st Century Artist Interns</i>
---	---	--

**Organic.
Holistic.
No Artificial Ingredients.**

Psychoanalysis helps—mind, body, and soul.

Ask one of our psychoanalysts how you, or someone you love, can work on achieving a fuller, richer life.

**Michigan
Psychoanalytic
INSTITUTE
&
SOCIETY**



*For change that lasts.
Learn more about us. www.mpi-mps.org*

Carol Barbour, PhD
Alex Barends, PhD
Ronald Benson, MD
Meryl Berlin, PhD
Robert Cohen, PhD
Susan Cutler, PhD
Sara Dumas, MD
Joshua Ehrlich, PhD
Harvey Falit, MD
Richard Hertel, PhD
Erika Homann, PhD
Howard Lerner, PhD
Barry Miller, MD
Christina Mueller, MD
Jack Novick, PhD
Kerry Kelly Novick
Jean-Paul Pegeron, MD
Dwarakanath Rao, MD
Ivan Sherick, PhD
Merton Shill, PhD
Michael Shulman, PhD
Michael Singer, PhD
Jonathan Sugar, MD
Dushyant Trivedi, MD
Jeffrey Urist, PhD
Gail van Langen, PhD
David Votruba, PhD
Margaret Walsh, PhD
Elisabeth Weinstein, MD
Mark Ziegler, PhD



**Celebrating
137 Successful Seasons**

Jaffe
JAFFE RAITT HEUER & WEISS
*A Professional Corporation
Attorneys & Counselors*

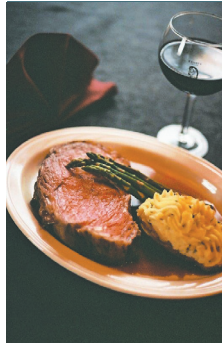
proud supporter of

ums
BE PRESENT

535 W. WILLIAM STREET, SUITE 400S • ANN ARBOR, MICHIGAN 48103
P: 734.222.4776 • F: 734.222.4769

www.jaffelaw.com

ANN ARBOR • SOUTHFIELD • DETROIT • NAPLES



Join us for
cocktails and
dinner at our
two Ann Arbor
restaurants for
a spectacular
meal after the
performance.



Serving steaks cut in our own market, Knight's famous prime rib, falling-off-the-bone ribs, burgers, seafood, salads, daily specials, "home-baked" bread and desserts.

Knight's Steakhouse

600 East Liberty • 734/887-6899

2324 Dexter Avenue • 734/665-8644

Open Daily 11 a.m. to Midnight - Liberty St.

Preferred Seating Available

www.Knightsrestaurants.com

UMS Faculty Insight Group

As part of the UMS Mellon Initiative on Arts/Academic Integration, this group advises UMS staff on opportunities to integrate our programming more deeply and systematically into the academic life of the University of Michigan.

Mark Clague	Linda Gregerson	Daniel Klionsky	Lester Monts
Clare Croft	Marjorie Horton	Lawrence	Melody Racine
Philip J. Deloria	Joel Howell	La Fountain-	Sidonie Smith
Gillian Eaton	Martha S. Jones	Stokes	Emily Wilcox

UMS K-12 Think Tank

Through an annual think tank, UMS brings together K-12 educators and administrators to help us stay aware of trends, changing resources, and new opportunities for learning in the K-12 classroom. The following individuals participated in May 2015:

Robin Bailey	Janet Callaway	Katie Mann	Terra Webster
Ann Marie Borders	Kathy Churchill	Naomi Norman	Amy Willacker
Deb Brzoska	Colleen Conway	Michelle Peet	
Jennifer Burton	Amy Deller	Yael Rothfeld	
Rose Marie	Tia Farrell	Sarena Shivers	
Callahan	Dayna Lang	Laura Wayne	

UMS Ambassadors

UMS Ambassadors advance the goals of UMS, champion the UMS mission through community engagement, provide and secure financial support, and assist in countless other ways.

Louise Taylor <i>Chair</i>	Judy Cohen	Michael Lee	Kathy Rich
William Shell <i>Vice Chair</i>	Jon Desenberg	Gloria Lewis	Nan Richter
Karen Bantel <i>Secretary</i>	Susan DiStefano	Laura Machida	Audrey
Wendy K. Zellers <i>Treasurer</i>	Annemarie Kilburn	Katie Malicke	Schwimmer
Pat Bantle <i>Past Chair</i>	Dolan	Rita Malone	Carol Senneff
Sassa Akervall	Sharon Peterson	Valerie	Arlene P. Shy
Arlene Barnes	Dort	Roedenbeck	Elena Snyder
Astrid Beck	Gloria J. Edwards	Maloof	Ren Snyder
Gail Bendit	Christina Ferris	Patti McCloud	Susan Snyder
Corry Berkooz	Zita Gillis	Terry Meerkov	Linda Spector
Connie Rizzolo	Joan Grissing	Barbara Mulay	Pam Tabbaa
Brown	Stephanie Hale	Magda Munteanu	Elaine Tetreault
Richard Chang	Jane Holland	Jane Nyman	Janet Torno
	Allison Jordon	Marjorie Oliver	Martha Williams
	Carol Kaplan	Betty Palms	Sarajane
	Nancy Karp	Karen Pancost	Winkelman
	Barbara Kaye	Ruth Petit	
	Kendra Kerr	Julie Picknell	
	Freddi Kilburn	Susan Pollans	
	Ye Na Kim	Anne Preston	
	Russell Larson	Jeff Reece	



STATE SIDES

with Cynthia Canty

Conversations About What Matters In Michigan
Monday – Thursday at 3 p.m. & 10 p.m.



Your NPR news station **npr**

91.7 FM Ann Arbor/Detroit
104.1 FM West Michigan
91.1 FM Flint
michiganradio.org

MILLER CANFIELD APPLAUDS THE
UNIVERSITY MUSICAL SOCIETY
For Being an Instrumental Part
of Our Community

**MILLER
CANFIELD**
millercanfield.com

ANN ARBOR DETROIT GRAND RAPIDS KALAMAZOO LANSING TROY

OUR ANN ARBOR LAWYERS | 101 North Main St., 7th Floor, Ann Arbor, MI 48104 | 734.663.2445

Paul R. Dimond
Joseph M. Fazio
Samantha S. Galecki
Robert E. Gilbert

Caroline B. Giordano
Lisa C. Hagan
Joseph C. Huntzicker
M. Sheila Jeffrey
Jeffrey L. LaBine

Anthony J. Mavrincac
John W. McNair
Sonal Hope Mithani
John D. Moran
Kristin E. Nied

David D. O'Brien
Thomas C. O'Brien
Emily C. Palacios
Stephen G. Palms
Clarence L. Pozza, Jr.

Kimberly L. Scott
Erik H. Serr
Timothy D. Sochocki
Christopher M. Trebilcock

UMS Staff

The UMS Staff works hard to inspire individuals and enrich communities by connecting audiences and artists in uncommon and engaging experiences.

ADMINISTRATION & FINANCE

Kenneth C. Fischer
President

John B. Kennard, Jr.
Director of Administration

Kathy Brown
Executive Assistant

Jenny Graf
*Tessitura Systems
Administrator*

Patricia Hayes
Financial Manager

John Peckham
*Information Systems
Manager*

DEVELOPMENT

Marnie Reid
*Interim Director of
Development*

Esther Barrett
Development Coordinator

Susan Bozell Craig
*Associate Director of
Development, Corporate
Partnerships & Major Gifts*

Rachelle Lesko
Annual Fund Manager

Lisa Michiko Murray
*Associate Director of
Development, Foundation
& Government Relations*

Cindy Straub
*Manager of Volunteers &
Special Events*

Mary A. Walker
*Campaign Director and
Associate Director of
Development, Major Gifts*

EDUCATION & COMMUNITY ENGAGEMENT

James P. Leija
*Director of Education &
Community Engagement*

Shannon Fitzsimons
*Campus Engagement
Specialist*

Teresa C. Park
Education Coordinator

Mary Roeder
*Community Programs
Manager*

MARKETING & COMMUNICATIONS

Sara Billmann
*Director of Marketing &
Communications*

Jesse Meria
*Video Production
Specialist*

Annick Odom
Marketing Coordinator

Anna Prushinskaya
*Senior Manager of Digital
Media*

PROGRAMMING & PRODUCTION

Michael J. Kondziolka
Director of Programming

Jeffrey Beyersdorf
Production Director

Alex Gay
Production Coordinator

Anne Grove
Artist Services Manager

Mark Jacobson
*Senior Programming
Manager*

Liz Stover Rosenthal
Programming Manager

TICKET OFFICE

Christina Bellows
Ticket Services Manager

Megan Boczar
Ticket Office Assistant

Katherine McBride
*Group Sales &
Promotions Coordinator*

Ellen Miller
*Ticket Office/Front-of-
House Assistant*

Anné Renforth
*Ticket Services
Coordinator*

Anna Simmons
*Assistant Ticket Services
Manager*

Willie Sullivan
*Front-of-House
Coordinator*

Dennis Carter, Bruce
Oshaben, Brian Roddy
Head Ushers

UMS CHORAL UNION

Scott Hanoian
*Music Director &
Conductor*

Arianne Abela
Assistant Conductor

Kathleen Operhall
Chorus Manager

Nancy Heaton
Chorus Librarian

Jean Schneider
Accompanist

Scott VanOrnum
Accompanist

**Trusted financial advisors
to Ann Arbor and the
university community for
more than 30 years.**

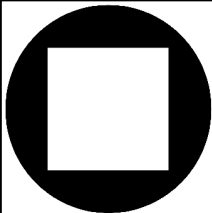


Retirement Income Solutions

Helping to grow and preserve your wealth

Ann Arbor | 734-769-7727 | risadvisory.com

© 2015 Retirement Income Solutions is an Independent Investment Advisor



**PERFORMANCE
NETWORK
THEATRE**
A Space of Possibility

Who's Afraid of Virginia Woolf?

Constellations (Michigan Premiere)

The Othello Principle

Summer Retreat (World Premiere)

Pulp (NNPN Rolling World Premiere)

**Why Not Me? A Sammy Davis
Jr. Story** (Michigan Premiere)

Dickens: An A Capella Carol

**www.pntheatre.org
734-663-0681**

STAY CLASSIC

Timeless. Contemporary.
Soothing. Inspiring.

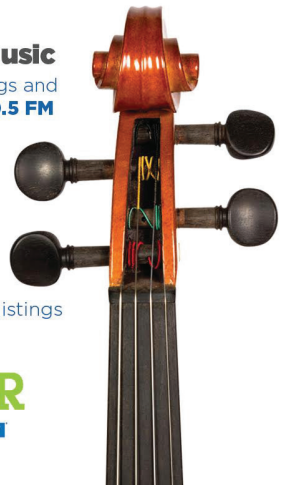
Classical Music

Daytime, evenings and
overnight on **90.5 FM**

FORTE

High school
performers in
pursuit of
excellence.

Check local **TV** listings



WKAR



Generous Donors

Campaign Gifts and Multi-Year Pledges

To help ensure the future of UMS, the following donors have made gifts to the Victors for Michigan campaign. We are grateful to these donors for their commitments.

CAMPAIGN CO-CHAIRS

Maxine Frankel and
James Stanley

\$500,000 OR MORE

Carl Cohen
Ilene H. Forsyth
Maxine and Stuart Frankel
Foundation
Eugene and Emily Grant
Family Foundation
The Andrew W. Mellon
Foundation
Candis J. and Helmut F. Stern
The Wallace Foundation

\$100,000–\$499,999

Anonymous
Bert Askwith and Patti
Askwith Kenner
Emily W. Bandera
Dennis Dahlmann
Sharon and Dallas Dort
Stephen and Rosamund
Forrest
Susan and Richard Gutow
Wallis Cherniack Klein
David Leichtman and Laura
A. McGinn
Norma and Dick Sarns
Ron and Eileen Weiser
Max Wicha and Sheila
Crowley
Ann and Clayton Wilhite

\$75,000–\$99,999

David and Phyllis Herzig
Nancy and James Stanley

\$50,000–\$74,999

Essel and Menacka Bailey
Daniel and Barbara Balbach
Penny and Ken Fischer
Beverley and Gerson Geltner
Mohamad Issa/Issa
Foundation
Miller, Canfield, Paddock
and Stone, P.L.C.
Mr. and Mrs. Donald L.
Morelock
Agnes Moy-Sarns and David
Sarns and the Sarns Family
Gil Omenn and Martha
Darling
Tim and Sally Petersen
Phil and Kathy Power
Sharon and Doug Rothwell
Linda Samuelson and Joel
Howell
Jane and Edward Schulak
Dennis and Ellie Serras
Glenn E. Watkins
Marina and Bob Whitman
Gerald B. Zelenock

\$25,000–\$49,999

Carol Amster
Cheryl Cassidy
Junia Doan
John R. Edman and Betty B.
Edman
Barbara H. Garavaglia
Charles H. Gershenson Trust
Anne and Paul Glendon
Norman and Debbie Herbert
Carl and Charlene Herstein
Jerry and Dale Kolins

Jeffrey MacKie-Mason and
Janet Netz
Martin Family Foundation
M. Haskell and Jan Barney
Newman
Dan and Sarah Nicoli
Lois Stegeman
Stout Systems
John W. and Gail Ferguson
Stout
Karen and David Stutz
Dody Viola

\$15,000–\$24,999

Michael and Suzan
Alexander
Linda and Ronald Benson
Valerie and David Canter
Sara and Michael Frank
Wendy and Ted Lawrence
Virginia and Gordon Nordby
Eleanor Pollack

\$5,000–\$14,999

Barbara Anderson and John
Romani
John and Lillian Back
Karen Bantel and Steve
Geiringer
Suzanne A. and Frederick J.
Beutler
Tim and Robin Damschroder
Michele Derr
Ann Martin and Russ Larson
Steve and Betty Palms
Eric and Ines Storchok

Classical & Music & NPR News

Listen online at
www.wgte.org

*Listen on the
radio at*

WGTE FM 91.3 Toledo

WGLE 90.7 Lima

WGBE 90.9 Bryan

WGDE 91.9 Defiance



wgte
Public Media

**SMITH HAUGHEY AND
ITS ATTORNEYS PROUDLY
SUPPORT THE...**

UNIVERSITY MUSICAL SOCIETY

Our Ann Arbor Attorneys:

Cheryl Chandler
Gary Eller
Sharon Kelly
Veronique Liem

Edward Lynch
William McCandless
Michael Miller
Edward Stein



**SMITH HAUGHEY
RICE & ROEGGE**

ATTORNEYS AT LAW

734-213-8000 www.shrr.com

213 S. ASHLEY, STE. 400
ANN ARBOR, MI 48104



Contemporary Food
Classic Décor • Full Bar
Locally Owned

316 S. State Street
@ North University
734-994-4004

www.redhawkannarbor.com

revive

soups • custom salads • classic sandwiches

replenish

essential groceries • beer & wine

619 East University @ Zaragon Place
734-332-3366 • www.revive-replenish.com

Endowed Funds

The success of UMS is secured in part by income from UMS endowment funds. You may contribute to an existing endowment fund or establish a named endowment with a minimum gift of \$25,000. We extend our deepest appreciation to the many donors who have established and/or contributed to the following funds:

H. Gardner and Bonnie Ackley Endowment Fund
 Herbert S. and Carol Amster Endowment Fund
 Catherine S. Arcure Endowment Fund
 Carl and Isabelle Brauer Endowment Fund
 Dahlmann Sigma Nu Endowment UMS Fund
 Hal and Ann Davis Endowment Fund
 Dallas and Sharon Dort Endowment Fund
 Doris Duke Charitable Foundation Endowment Fund
 John R. and Betty B. Edman Endowment Fund
 Epstein Endowment Fund
 Stephen and Rosamund Forrest Student Ticket Endowment Fund
 Ilene H. Forsyth Endowment Funds for Choral Union, Chamber Arts, and Theater
 James Garavaglia Theater Endowment Fund
 Anne and Paul Glendon Endowment Fund
 Susan and Richard Gutow Renegade Ventures Endowment Fund
 George N. and Katherine C. Hall Endowment Fund
 Norman and Debbie Herbert Endowment Fund
 David and Phyllis Herzig Endowment Fund
 JazzNet Endowment Fund
 William R. Kinney Endowment Fund
 Wallis Cherniack Klein Endowment for Student Experiences
 Dr. and Mrs. Jerry Kolins Shakespearean Endowment Fund
 Frances Mauney Lohr Choral Union Endowment Fund
 Natalie Matovinović Endowment Fund
 Medical Community Endowment Fund
 Dr. Robert and Janet Miller Endowment Fund
 NEA Matching Fund
 Ottmar Eberbach Funds
 Palmer Endowment Fund
 Mary R. Romig-deYoung Music Appreciation Fund
 Prudence and Amnon Rosenthal K-12 Education Endowment Fund
 Charles A. Sink Endowment Fund
 Herbert E. and Doris Sloan Endowment Fund
 James and Nancy Stanley Endowment Fund
 Susan B. Ullrich Endowment Fund
 UMS Endowment Fund
 The Wallace Endowment Fund
 The Zelenock Family Endowment Fund

**15
16** SEASON

**BEETHOVEN FESTIVAL with
GARRICK OHLSSON**

September 19
Hill Auditorium



**ROMANTIC
TCHAIKOVSKY**

October 24
Michigan Theater



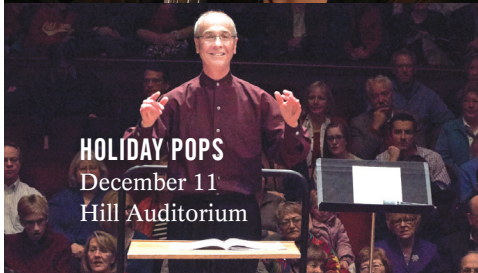
**MENDELSSOHN
"ITALIAN"**

November 7
Michigan Theater



HOLIDAY POPS

December 11
Hill Auditorium



**MOZART
BIRTHDAY BASH**

January 16
Michigan Theater



HARP MAGIC

March 12
Michigan Theater



THE PLANETS

April 9
Michigan Theater



Ann Arbor Symphony Orchestra

(734) 994-4801 • a2so.com

Planned Gifts/Bequests

We are grateful to the following donors for including UMS in their estate plans. These gifts will provide financial support to UMS for generations to come.

Anonymous
 Bernard and Raquel Agranoff
 Mike Allemang
 Carol and Herb Amster
 Neil P. Anderson
 Dr. and Mrs. David G. Anderson
 Catherine S. Arcue
 Barbara K. and Laurence R. Baker
 Rodney and Joan Bentz
 Kathy Benton and Robert Brown
 Linda and Maurice Binkow
 Elizabeth S. Bishop
 Mr. and Mrs. W. Howard Bond
 Mr. and Mrs. Pal E. Borondy
 Barbara Everitt Bryant
 Lou and Janet Callaway
 Pat and George Chatas
 Mr. and Mrs. John Alden Clark
 Carl Cohen
 Alan and Bette Cotzin
 Mary C. Crichton
 Penny and Ken Fischer
 Susan Ruth Fisher
 Meredith L. and Neal Foster
 Thomas and Barbara Gelehrter
 Beverley and Gerson Geltner
 Dr. Sid Gilman and Dr. Carol Barbour
 Anne and Paul Glendon
 Thea and Elliot Glicksman
 Debbie and Norman Herbert
 Rita and Peter Heydon
 John and Martha Hicks
 Gideon and Carol Hoffer

Marilyn G. Jeffs
 Thomas C. and Constance M. Kinnear
 Diane Kirkpatrick
 Dr. and Mrs. Jerry Kolins
 Frank Legacki and Alicia Torres
 Leo and Kathy Legatski
 Richard LeSueur
 Robert and Pearson Macek
 Susan McClanahan
 Griff and Pat McDonald
 Joanna McNamara
 M. Haskell and Jan Barney Newman
 Len Niehoff
 Dr. and Mrs. Frederick O'Dell
 David Parsigian
 Irena Politano
 Eleanor Pollack
 Mr. and Mrs. Dennis M. Powers
 Mr. and Mrs. Michael Radock
 Mr. and Mrs. Jack Ricketts
 Prue and Ami Rosenthal
 Irma J. Sklenar
 Art and Elizabeth Solomon
 Richard W. Solt
 Hildreth Spencer
 Eric and Ines Storhok
 Louise Taylor
 Roy and JoAn Wetzell
 Ann and Clayton Wilhite
 Max Wicha and Sheila Crowley
 Marion Wirick
 Mr. and Mrs. Ronald G. Zollar

How to Make a Gift

UMS excites the imagination, sparks creativity, sharpens collaboration, inspires new ways of thinking, and connects us in ways that only the arts can. Your gift of any size will enable UMS to deliver world-class performances and create outstanding educational opportunities for our community.

Please send gift to:
 UMS Development
 881 N. University Ave
 Ann Arbor, MI 48109-1011

For more information, please call 734.764.8489 or visit ums.org/support.

UMS Support – July 1, 2014 – June 30, 2015

The following list includes donors who made gifts to UMS between July 1, 2014 and June 30, 2015. Due to space restraints, we can only list in the UMS program book those who donated \$250 or more. Donors of \$1-\$249 will be included in the online list at ums.org.

PRODUCERS (\$500,000 OR MORE)

Ilene H. Forsyth #
Eugene and Emily Grant Family
Foundation
University of Michigan

DIRECTORS (\$100,000–\$499,999)

Anonymous
Carl and Isabelle Brauer Fund #
Ford Motor Company Fund and
Community Services
Maxine and Stuart Frankel
Foundation
Karl V. Hauser #
The Andrew W. Mellon Foundation
University of Michigan Health System
The Wallace Foundation

SOLOISTS (\$50,000–\$99,999)

Anonymous
Anonymous #
Bert Askwith and Patti Askwith
Kenner
Community Foundation for
Southeast Michigan
Dance/USA
Doris Duke Charitable Foundation
DTE Energy Foundation
Masco Corporation Foundation
National Endowment for the Arts
Linda and Stuart Nelson
in honor of Ken Fischer

MAESTROS (\$20,000–\$49,999)

Anonymous
Anonymous #
Emily W. Bandera, M.D.
Sharon and Dallas Dort #
Stephen and Rosamund Forrest #
Barbara H. Garavaglia #
in memory of Jim Garavaglia
Beverly and Gerson Geltner
Charles H. Gershenson Trust,
Maurice S. Binkow, Trustee
Susan and Richard Gutow #
KeyBank
Jeffrey MacKie-Mason and Janet Netz
Michigan Council for Arts and Cultural
Affairs
Philip and Kathy Power
Norma and Dick Sarns #
Sesi Lincoln
Toyota
Bruce G. Tuchman

U-M Third Century Initiative
Ron and Eileen Weiser
Max Wicha and Sheila Crowley
Ann and Clayton Wilhite

VIRTUOSOS (\$10,000–\$19,999)

Jerry and Gloria Abrams
*includes gift in honor of John M.
Nicklas*
Menakka and Essel Bailey #
Bank of Ann Arbor
Joseph A. Bartush, LS&A, Class of '71
Bendit Foundation
Rachel Benditt and Mark Bernstein
Maurice and Linda Binkow
Carl Cohen
Jim and Patsy Donahey
Penny and Ken Fischer
Anne and Paul Glendon
David and Phyllis Herzig
Joel Howell and Linda Samuelson
The Japan Foundation
Frank Legacki and Alicia Torres
Natalie Matovinović
*in memory of Josip Matovinović
MD*
McKinley Associates, Inc.
Thomas and Deborah McMullen
McMullen Properties
Mrs. Robert E. Meredith #
Miller, Canfield, Paddock and Stone
P.L.C.
Mr. and Mrs. Donald L. Morelock
New England Foundation for the Arts
Old National Bank
Gil Omenn and Martha Darling
Leslee and Michael Perstein
in honor of Margie McKinley
Tim and Sally Petersen #
PNC Foundation
James Read
Retirement Income Solutions
Sharon and Doug Rothwell
Agnes Moy-Sarns and David Sarns
Jane and Edward Schulak
Dennis and Ellie Serras
Gary and Diane Stahle
Nancy and James Stanley
University of Michigan Credit Union
Stanford and Sandra Warshawsky
Robert O. and Darragh H. Weisman
in honor of Jean and Sidney Silber
Robert and Marina Whitman
Gerald B. (Jay) Zelenock #

CONCERTMASTERS (\$5,000–\$9,999)

Michael Allemang and Janis Bobrin
Carol Amster
Barbara A. Anderson and John H.
Romani
Ann Arbor Automotive
Anonymous
Linda and Ronald Benson
Andrew and Lisa Bernstein
Gary Boren
Edward and Mary Cady
Valerie and David Canter
Cheryl Cassidy
Comerica Bank
Anne and Howard Cooper
Junia Doan
Faber Piano Institute
Randall and Nancy Faber
David and Jo-Anna Featherman
Barbara G. Fleischman
Katherine and Tom Goldberg
Norman and Debbie Herbert #
Carl and Charlene Herstein
Honigman Miller Schwartz and
Cohn LLP
David and Sally Kennedy
*in memory of Elizabeth Earhart
Kennedy*
Jerry and Dale Kolins #
Samuel and Marilyn Krimm
Level X Talent
Richard and Carolyn Lineback
Benard L. Maas Foundation
Mardi Gras Fund
Martin Family Foundation #
Dan and Sarah Nicoli
THE MOSAIC FOUNDATION (of R. &
P. Heydon)
M. Haskell and Jan Barney Newman
Virginia and Gordon Nordby
Rob and Quincy Northrup
Eleanor Pollack
Frances Quarton
Corliss and Dr. Jerry Rosenberg
in honor of Ken Fischer
Prue and Ami Rosenthal
Lynne Rosenthal
Savco Hospitality
Lois Stegeman
The Summer Fund of the Charlevoix
County Community Foundation
Stout Systems
John W. and Gail Ferguson Stout
Karen and David Stutz
*includes gift in honor of Donald
and Antoinette Morelock*
Dody Viola

Dr. Carl Winberg
in honor of Margie McKinley

LEADERS
(\$2,500–\$4,999)

Jim and Barbara Adams
Michael and Suzan Alexander
Anonymous
Arts Midwest Touring Fund
John and Lillian Back
Karen Bantel and Steve Geiringer
Dr. Carol Barbour and Dr. Sid Gilman
Bob and Wanda Bartlett
Bradford and Lydia Bates
Kathy Benton and Robert Brown
Suzanne A. and Frederick J. Beutler #
Carolyn M. Carty and Thomas H. Haug
Jean and Ken Casey
Julia Donovan Darlow and John Corbett O'Meara
Elena and Nicholas Delbanco
Alice Dobson
John Dryden and Diana Raimi
Joan and Emil Engel
George W. Ford
in memory of Steffi Reiss
Sara and Michael Frank
Prof. David M. Gates
Thomas and Barbara Gelehrter
Bill and Ruth Gilkey
John Griffith
Leslie and Mary Ellen Guinn
Lynn and Martin Halbfinger
Robert and Dannielle Hamilton
Katherine D. Hein
Connie and Tom Kinnear
Diane Kirkpatrick
Philip and Kathryn Klintworth
Ted and Wendy Lawrence
Leo and Kathy Legatski
Carolyn and Paul Lichter
Lawrence and Rebecca Lohr #
E. Daniel and Kay Long #
Jean E. Long
Ernest and Adèle McCarus
Susan McClanahan and Bill Zimmerman
includes a gift in honor of Donald and Antoinette Morelock
Estate of Michael G. McGuire
Paul Morel and Linda Woodworth
Virginia Morgan and Joseph Spiegel
William Nolting and Donna Parmelee
Steve and Betty Palms
Elizabeth and David Parsigian
Judith A. Pavitt
Bertram and Elaine Pitt
Jim and Bonnie Reece
John W. Reed
in honor of Ken Fischer
Anthony L. Reffells
Nathaniel and Melody Rowe

Frankie and Scott Simonds
in honor of Candis and Helmut Stern
Ed and Natalie Surovell
Judy and Lewis Tann
Keturah Thunder Haab
Jim Toy
includes gifts in honor of Ken Fischer and in memory of Jerry Fischer
Elise Weisbach

PATRONS
(\$1,000–\$2,499)

Katherine Aldrich
Richard and Mona Alonzo
American Title Company of Washtenaw
Christiane Anderson
David G. and Joan M. Anderson #
John Anderson and Lyn McHie
Dave and Katie Andrea
Anonymous
Anonymous
in honor of Jean Campbell
Dr. and Mrs. Rudi Ansbacher
Harlene and Henry Appelman
Dr. Frank J. Ascione
Bob and Martha Ause
Elizabeth R. Axelson and Donald H. Regan
Jonathan Ayers and Teresa Gallagher
Patricia Bard
Lisa and Jim Baker
Rosalyn, Joshua, and Beth Barclay
in memory of Mel L. Barclay, M.D.
John and Ginny Bareham
Anne Beaubien and Phil Berry
Cecilia Benner
in memory of David Lebnborn
Dr. Rosemary R. Berardi and Dr. Carolyn R. Zaleon
Sara Billmann and Jeffrey Kuras
Joan Binkow
John Blankley and Maureen Foley
Blue Nile Restautant
DJ and Dieter Boehm
in honor of Sara Billmann
Margaret and Howard Bond
Rebecca S. Bonnell
Charles and Linda Borgsdorf
Laurence and Grace Boxer
Dr. and Mrs. Ralph R. Bozell
Dale E. and Nancy M. Briggs
David and Sharon Brooks
Robert and Jeannine Buchanan
Lawrence and Valerie Bullen
Joan and Charley Burleigh
Barbara and Al Cain
Lou and Janet Callaway
Dan Cameron Family Foundation
Jean W. Campbell
Sally Camper and Bob Lyons
Thomas and Marilou Capovilla
Anne Chase
Patricia Chatas
Myung Choi
Brian and Cheryl Clarkson
Ellen and Hubert Cohen
Deborah Keller-Cohen and Evan Cohen
Connie and Jim Cook
Mac and Nita Cox
Christopher Dahl and Ruth Rowse
in honor of Ken Fischer
Timothy and Robin Damschroder
Charles and Kathleen Davenport
Michele Derr
in memory of Ellwood Derr
Monique Deschaine
Molly Dobson
Peter and Grace Duren
Rosalie Edwards/Vibrant Ann Arbor Fund of the Ann Arbor Area Community Foundation
Charles and Julia Eisendrath
Johanna Epstein and Steven Katz
Harvey and Elly Falit
in honor of Carol and Norman Schnall
Margaret and John Faulkner
Esther Floyd
Food Art
Dan and Jill Francis
Judy and Paul Freedman
Leon and Marcia Friedman
Bill and Boc Fulton
Zita and Wayne Gillis
Barbara and Fred Goldberg #
Cozette T. Grabb
Nicki Griffith
Kenneth and Margaret Guire #
Marys Hamill
Jeff Hannah and Nur Akcasu
Randall L. and Nancy Caine Harbour #
Clifford and Alice Hart
Larry Hastie
Daniel and Jane Hayes
David W. Heleniak #
Sivana Heller
Eileen and Saul Hyman's IATSE Local 395
Jean Jacobson
Janet and Wallie Jeffries
Timothy and Jo Wiese Johnson
Liz Johnson
Kent and Mary Johnson
in memory of Dr. Mel Barclay
Mark and Madolyn Kaminski
Richard and Sylvia Kaufman
in honor of Ken Fischer
James A. Kelly and Mariam C. Noland
Carolyn and Jim Knake
Michael J. Kondziolka and Mathias-Philippe Badin
Barbara and Michael Kratchman
Donald and Jeanne Kunz
Ann Martin and Russ Larson
Jerry and Marion Lawrence
John K. Lawrence and Jeanine A. DeLay

David Leichtman and Laura A. McGinn
Richard LeSueur
Fran Lyman
Tim and Lisa Lynch
John and Cheryl MacKrell
Edwin and Cathy Marcus
Nancy and Philip Margolis
Debbie and David Marmor
in honor of Karen and David Stutz
W. Harry Marsden
Howard L. Mason
Mary M. Matthews
Jerry A. and Deborah Orr May #
W. Joseph McCune and Georgiana M. Sanders
Griff and Pat McDonald
James H. McIntosh and Elaine K. Gazda
Margaret McKinley
Bert and Kathy Moberg
Lester and Jeanne Monts
Moscow Philanthropic Fund
John and Ann Nicklas
Susan and Mark Orringer #
Elisa A. Ostafin
Lisa and John Peterson
Pfizer Foundation
Juliet S. Pierson
Susan Pollans and Alan Levy
Stephen and Bettina Pollock
Rick and Mary Price
Jeff Reece
Ray and Ginny Reilly
Malverne Reinhart
Huda Karaman Rosen
Victor Strecher and Jeri Rosenberg
Herbert and Ernestine Ruben
Craig and Jan Ruff
Karem and Lena Sakallah
Maya and Stephanie Savarino
Erik and Carol Serr
Janet Shatusky
Alyce Sigler
Carl Simon and Bobbi Low
Nancy and Brooks Sitterley
Michael Sivak and Enid Wasserman
Barbara Furin Sloat
Ren and Susan Snyder
Linh and Dug Song
Cheryl Soper
Michael B. Staebler and Jennifer R. Poteat
Ted St. Antoine
Virginia E. Stein #
Eric and Ines Storhok
Dalia and Stan Strasius
Charlotte Sundelson
Louise Taylor
Louise Townley
Jeff and Lisa Tulin-Silver
Susan B. Ullrich #
Jack and Marilyn van der Velde
Douglas and Andrea Van Houweling
Joyce Watson and Marty Warshaw
Harvey and Robin Wax
includes a gift in honor of Penny Fischer

Lauren and Gareth Williams
Max and Mary Wisgerhof
Charles Witke and Aileen Gatten
The Worsham Family Foundation
Thomas and Erin Zurbuchen #

BENEFACTORS (\$500 – \$999)

Roger Albin and Nili Tannenbaum
Christine W. Alvey
Neil P. Anderson
Anonymous
Sandy and Charlie Aquino
Penny and Arthur Ashe
Laurence R. and Barbara K. Baker
Reg and Pat Baker
Barbara and Daniel Balbach #
David and Monika Barera
Astrid B. Beck
Rodney and Joan Bentz
James K. and Lynda W. Berg
Peggy and Ramon Berguer
in honor of Jim and Nancy Stanley
L. S. Berlin and Jean McPhail
Raymond and Janet Bernreuter
William and Ilene Birge
Ron and Mimi Bogdasarian
R.M. Bradley and C.M. Mistretta
Joel Bregman and Elaine Pomeranz
Charles C. Bright and Susan Crowell
Susan and Oliver Cameron
Thomas and Colleen Carey
Brent and Valerie Carey
Jack and Susan Carlson
Barbara Mattison Carr
Andrew Caughey MD and Shelly Neitzel MD
Tsun and Siu Ying Chang
Samuel and Roberta Chappell
John and Camilla Chiapuris
Reginald and Beverly Ciokajlo
Mark Clague and Laura Jackson
Judy and Malcolm Cohen
Jon Cohn and Daniela Wittmann
Arnold and Susan Coran
Paul Courant and Marta Manildi
Katherine and Clifford Cox
Clifford and Laura Craig #
John and Mary Curtis
Roderick and Mary Ann Daane
Linda Davis and Bob Richter
in honor of Ken Fischer
David Deromedi
in memory of Nancy Deromedi
Andrzej and Cynthia Dlugosz
Karen Yamada and Gary Dolce
Ed and Mary Durfee
James F. Eder
Barbara and Tony Eichmuller
Alan S. Eiser
Phil and Phyllis Fellin
Carol Finerman
Susan Fisher
Scott and Janet Fogler
David Fox and Paula Bockenstedt
Christopher Friese
in honor of Jerry Blackstone
Carol Gagliardi and David Flesher

Tom Gasloli
Renate Gerulaitis
David and Maureen Ginsburg #
Ken Gottschlich and Martha Pollack
Christopher and Elaine Graham
Martha and Larry Gray
Dr. John and Renee M. Greden
Drs. Patricia and Stephen Green
Raymond Grew
Werner H. Griik
in memory of Warren L. Hallock
Steven and Sheila Hamp
Alan Harnik and Prof Gillian Feeley-Harnik
Martin D. and Connie D. Harris
Dr. Don P. Haefner and Dr. Cynthia J. Stewart
Helen C. Hall
Stephen Henderson
Kay Holsinger and Douglas C. Wood
Jim and Colleen Hume
Ann D. Hungerman
Isosciences, L.L.C.
Hank and Karen Jallo
Mattias Jonsson and Johanna Eriksson
Don and Sue Kaul
David H. and Gretchen Kennard
John Kennard and Debbi Carmody
Paul and Dana Kissner
Jean and Arnold Kluge
Barbara and Ronald Kramer
Mary L. Kramer
in honor of Ken Fischer
Gary and Barbara Krenz
Jane Fryman Laird
Joan and Melvyn Levitsky
Jennifer Lewis and Marc Bernstein
James and Jean Libs
Marty and Marilyn Lindenauer
Rod and Robin Little
Joan Lowenstein and Jonathan Trobe
Brigitte Maassen
William and Jutta Malm
Melvin and Jean Manis
Susan Martin
Judythe and Roger Maugh
Martha Mayo and Irwin Goldstein
Margaret and Harris McClamroch
Jordan McClellan
Bill and Ginny McKeachie
Semyon and Terry Meerkov
Bernice and Herman Merte
Fei Fei and John Metzler
Lee Meyer
Dr. James M. Miller and Dr. Rebecca H. Lehto
Lewis and Kara Morgenstern
Lisa and Steve Morris
Brian and Jacqueline Morton
Drs. Louis and Julie Jaffee Nagel
Marylen S. Oberman
Elizabeth Ong
M. Joseph and Zoe Pearson
Jean and Jack Peirce
Wesen and William Peterson
Diana and Bill Pratt
Wallace and Barbara Prince

Peter Raitlon and Rebecca Scott
 Marnie Reid
 Doug and Nancy Roosa
 David Lampe and Susan Rosegrant
 Stephanie Rosenbaum
 Richard and Edie Rosenfeld
 Nancy Rugani
 Linda and Leonard Sahn
 Mariam Sandweiss
in memory of Leon Cohen
 Ashish and Norma Sarkar
 Christopher Kendall and Susan Schilperoort
 David Schmidt and Jane Myers
 Ann and Tom Schriber
 Matthew Shapiro and Susan Garetz
 Bruce M. Siegan
 Edward and Kathy Silver
 Sue and Don Sinta
 Cynthia Sorensen and Henry Rueter
 Linda Spector and Peter Jacobson
 Leslie Stainton and Steven Whiting
 Allan and Marcia Stillwagon
 Nancy Barbas and Jonathan Sugar
 Sandy Talbott and Mark Lindley
 Doris H. Terwilliger
 Ted and Eileen Thacker
 Claire Turcotte
 Joyce Urba and David Kinsella
 Erika Nelson and David Wagener
 Elizabeth A. and David C. Walker
 Arthur and Renata Wasserman
 Deborah Webster and George Miller
 Lyndon Welch
in memory of Angela Welch
 James B. White and Mary F. White
 Kathy White #
 Iris and Fred Whitehouse
 Diane Widzinski
 Thomas K. Wilson
 Lawrence and Mary Wise
 Dr. and Mrs. Robert Wolf
 Mary Jean and John Yablonky
 Richard and Kathryn Yarmain
 Thomas and Karen Zelnik

**ASSOCIATES
 (\$250–\$499)**

Judith Abrams
 Jan and Sassa Akervall
 Gordon and Carol Allardyce
 James and Catherine Allen
 Catherine M. Andrea
 Ann Arbor Area Community Foundation
 Anonymous
 Bernard and Raquel Agranoff
 Dr. Diane M. Agresta
 Helen and David Aminoff
 Ralph and Elaine Anthony
 Lisa and Scott Armstrong
 Eric and Nancy Aupperle
 Rosemary and John Austgen
 Robert and Mary Baird
 Pat Bantle

Barbara Barclay
 Frank and Lindsay Tyas Bateman
 Kenneth and Eileen Behmer
 Christina Bellows and Joe Alberts
 Helen V. Berg
 Corry and Gahl Berkooz
 Dan Berland and Lisa Jevens
 Barbara and Sheldon Berry
 Maria Beye
 Mary E. Black
 Jerry and Dody Blackstone #
 Judy Bobrow and Jon Desenberg
 Mr. Mark D. Bomia
 Joel Bregman and Elaine Pomeranz
 Gloria D. Brooks
 Morton B. and Raya Brown
 Tom and Lori Buiteweg
 Jonathan and Trudy Bulkley
 Jim and Cyndi Burnstein
 Tony and Jane Burton
 Jenny and Jim Carpenter
 Dennis J. Carter
 Susan Carter
 Joan and Mark Chesler
 Laurence Cheung
 Hilary Cohen
 Wayne and Melinda Colquitt
 Dr. Lisa D. Cook
 Katharine Cosovich
 Susan Bozell Craig
 Jean Cunningham and Fawwaz Ulabi
 Marylee Dalton and Lynn Drickamer
 Connie D'Amato
 Sunil and Merial Das
 Art and Lyn Powrie Davidge #
in memory of Gwen and Emerson Powrie
 Ed and Ellie Davidson
 John Debbink
 David L. DeBruyn
 Margaret Delaney
 Kenneth Wisinski and Linda Dintenfass
 Paul and Annemarie Dolan
 Elizabeth Duell
 Don and Kathy Duquette
 Swati Dutta
 Richard and Myrna Edgar
 Gloria Edwards
 Morgan and Sally Edwards
 Charles and Julie Ellis
 Thomas Fabiszewski
 Kay Felt
 Jeff Fessler and Sue Cutler
 Herschel and Adrienne Fink
 Harold and Billie Fischer
 Frederick and Kathleen Fletcher
 Jessica Fogel and Lawrence Weiner
 Lucia and Doug Freeth
 Susan Froelich and Richard Ingram
in memory of Eugene O. Ingram
 Philip and Renée Woodten Frost
 Charles and Janet Garvin
 Sandra Gast and Greg Kolecki
 Bob and Julie Gates

Michael Gatti and Lisa Murray
 Prof. Beth Genne and Prof. Allan Gibbard
 Chris Genteel and Dara Moses
 J. Martin Gillespie and Tara Gillespie
 Google Inc.
 Mr. and Mrs. Charles and Janet Goss
 Marla Gousseff
 Michael L. Gowing
 Jenny Graf
 Jerry M. and Mary K. Gray
 Richard and Linda Greene
 Linda and Roger Grekin
 Carl Goldberg
 George and Mary Haddad
 Drs. Erik and Dina Hanby
 Susan R. Harris
 J. Lawrence Henkel and Jacqueline Stearns
 Therese and Alfred Hero
 Lorna and Mark Hildebrandt
 Perry Irish Hodgson
 Timothy Hofer and Valerie Kivelson
 Diane S. Hoff #
 Daniel Hoffman
 James S. and Wendy Fisher House #
 Gaye Humphrey
 Harold Ingram #
 Mark and Linda Johnson
 Mr. Lawrence and Mrs. Ruth Jones
 Janet and Jerry Joseph
 Don and Nancy Kaegi
 Monica and Fritz Kaenzig
 Angela Kane
 Mark and Carol Kaplan
 E. and M. Katz
 Fred and Susan Kellam
 Charles Kelly
 Nancy Keppelman and Michael Smerza
 Dan and Freddy Kilburn
 Laurence King and Robyn Frey-King
 Web and Betty Kirksey
 Michael Koen
 Rosalie and Ron Koenig
 Joseph and Marilyn Kokoszka
 Bert and Geraldine Kruse
 Frank and Kim La Marca
 Donald John Lachowicz
 Tim and Kathy Laing
 Linda Langer
 Anne-Marie and Anthony La Rocca
 John and Theresa Lee
 James Leija and Aric Knuth
 Anne and Harvey Leo
 John Lesko and Suzanne Schluederberg
 Rachelle Lesko
 Gloria Kitto Lewis
 Jacqueline Lewis
in honor of Ken Fischer
 Michael and Debra Lisull
 Dr. Len and Betty Lofstrom
 Julie M. Loftin

Barbara and Michael Lott
 Bruce Loughry
 Martin and Jane Maehr
 Susan C. Guszynski and Gregory F. Mazure
 Joanna McNamara and Mel Guyer
 Frances McSparran
 Gerlinda S. Melchiori
 Warren and Hilda Merchant
 Dennis J. Merrick and Judith H. Mac
 Scott and Julie Merz
 Louise Miller
 Gene and Lois Miller
 John and Sally Mitani
 Candy Mitchell
 Arnold and Gail Morawa
 Trevor Mudge and Janet Van Valkenburg
 Gavin Eadie and Barbara Murphy
 Thomas J. Nelson
 Gayl and Kay Ness
 Richard and Susan Nisbett
 Eugene and Beth Nissen
 Laura Nitzberg
 Christer and Outi Nordman
 Arthur S. Nusbaum
 Constance Osler
 Mohammad and J. Elizabeth Othman
 Karen Pancost
 William and Hedda Panzer
 Donna D. Park
 Karen Park and John Beranek
 Lisa Payne
 Sumer Pek and Mickey Katz-Pek
 Melvin and Sharon Peters
 Margaret and Jack Petersen
in honor of Jerry Blackstone
 Sara Jane Peth
 Marianne Udow-Phillips and Bill Phillips
 Donald and Evonne Plantinga
 Joyce Plummer
 Thomas S. Porter #
 Nancy Powell
 Anne Preston
 Karen and Berislav Primorac

Floretta Reynolds
 Guy and Kathy Rich
 Douglas and Robin Richstone
 Jessica C. Roberts
 Dr. and Mrs. Jonathan Rodgers
 Dr. Stephen Rosenblum and Dr. Rosalyn Sarver
 Rosemarie Haag Rowney
 Carol Rugg and Richard Montmorency
 Eugene Saenger, Jr.
 Amy Saldinger and Robert Axelrod
 Irv and Trudy Salmeen
in honor of Pat Chapman
 Michael and Kimm Sarosi
 Albert J. and Jane L. Sayed
 Jochen and Helga Schacht
 Mark Schlissel
 Betina Schlossberg
 Regan Knapp and John Scudder
 Larry and Bev Seiford
 Suzanne Selig
 Ms. Harriet Selin
 Elvera Shappirio
 Laurence Shear
 William and Christina Shell
 Patrick and Carol Sherry
 George and Gladys Shirley
 Jean and Thomas Shope
 Andrew and Emily Shuman
 Nina Silbergleit
 Terry M. Silver
 Robert and Elaine Sims
 Scott and Joan Singer
 Loretta Skewes
 Carl and Jari Smith #
 Dr. and Mrs. Gregory Smith
 Robert W. Smith
 Greg Grieco and Sidonie Smith
 David and Renate Smith
 Hanna Song and Peter Toogood
 Becki Spangler and Peyton Bland
 Doris and Larry Sperling
 Jim Spevak
 Gretta Spier and Jonathan Rubin
 Jeff Spindler

Paul and Judith Spradlin
 Daniel and Susan Stepek
 James L. Stoddard
 Cynthia Straub
 Brian and Lee Talbot
 May Ling Tang
 Carolyn and Frank Tarzia
 Eva Taylor
 Denise Thal and David Scobey
 Bill and Marlene Thomas
 John G. Topliss
 Donald Tujaka
 Alvan and Katharine Uhle
 Karla and Hugo Vandersypen
 Michael Van Tassel
 James and Barbara Varani
 Virginia O. Vass
 Brad L. Vincent
 Jack Wagoner, M.D.
 Mary Walker and David Linden
 Charles R. and Barbara H. Wallgren #
 Bob and Liina Wallin
 Jo Ann Ward
 Alan and Jean Weamer
 Richard and Madelon Weber #
 MaryLinda and Larry Webster
 Mr. and Mrs. Richard Weiermiller
 Jack and Carol Weigel
 Lisa and Steve Weiss
 Mary Ann Whipple
 Nancy P. Williams
in honor of Katie Stebbins
 Robert J. and Anne Marie Willis
 John and Pat Wilson
 Robert Winfield
 Beth and I. W. Winsten
 Steven and Helen Woghin
 Charlotte A. Wolfe
 Frances Wright #
 Gail and David Zuk

*Due to space restraints, tribute gifts of \$1-\$249 will be recognized in the online donor list at ums.org.

Ad Index

2	Ann Arbor Area Community Foundation	26	Michigan Psychoanalytic Institute and Society
34	Ann Arbor Symphony Orchestra	28	Michigan Radio
5	Center for Plastic and Reconstructive Surgery	28	Miller, Canfield, Paddock and Stone, P.L.C.
8	Charles Reinhart Co. Realtors	30	Performance Network
8	Cottage Inn	32	Red Hawk and Revive + Replenish
8	Donaldson & Guenther	30	Retirement Income Solutions
10	Dykema Gossett	22	Silver Maples
10	Gilmore Keyboard Festival	32	Smith Haughey Rice & Roegge
22	Heinz C. Prechter Bipolar Research Fund	4	U-M Alumni Association
21	Honigman Miller Schwartz and Cohn LLP	IBC	WEMU
10	Iris Dry Cleaners	32	WGTE
26	Jaffe, Raitt, Heuer & Weiss PC	30	WKAR
26	Knight's Downtown		

IBC = Inside back cover



VICTORS FOR
MICHIGAN

Be a victor for
excellence



Invest in the future of our community
by supporting UMS today.

Please send your gift to:
UMS Development
Burton Memorial Tower
881 North University Avenue
Ann Arbor, MI 48109-1011

or call 734.764.8489 or go to ums.org/support



National Public Radio mixed with local public knowledge.

|
—
89.1

Public radio from Eastern Michigan University

npr + jazz + blues + local news wemu.org

Jazz is alive. And this is its house number.

|
—
89.1

Public radio from Eastern Michigan University

npr + jazz + blues + local news wemu.org

What crosstown rivalry?

|
—
89.1

Proud to be UMS's media partner for the 2015-16 season

wemu.org