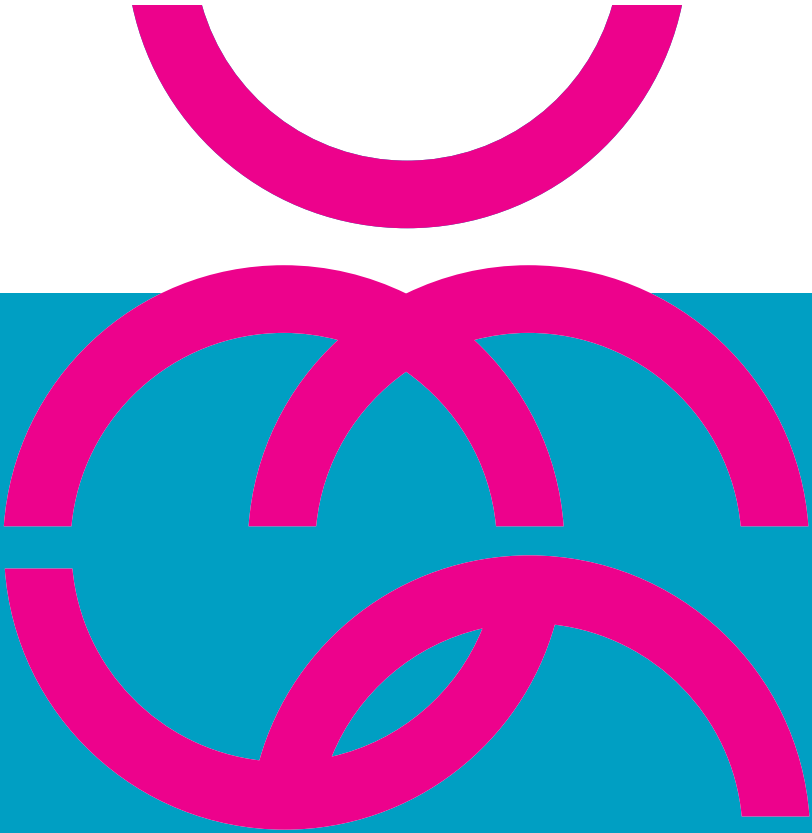


UMS PROGRAM BOOK  
WINTER 2015



# BE A VICTOR FOR THE ARTS.

AND INSPIRE A LIFETIME OF  
CREATIVE DISCOVERY



Invest in the future of our community  
by supporting UMS today.

**Please send your gift to:**  
UMS Development  
Burton Memorial Tower  
881 North University Avenue  
Ann Arbor, MI 48109-1011

or call 734.764.8489 or go to [ums.org/support](https://ums.org/support)



**VICTORS FOR  
MICHIGAN**

# Be Present.

UMS unleashes the power of the performing arts in order to engage, educate, transform, and connect individuals with uncommon experiences. The Winter 2015 Season is full of exceptional, world-class, and truly inspiring performances.

WELCOME TO THE UMS EXPERIENCE.

WE'RE GLAD YOU'RE PRESENT.

ENJOY THE PERFORMANCE.



*Your body is your instrument.*



*Keep it in tune.*



Center for Plastic & Reconstructive Surgery  
ART AND MEDICINE PERFORMING IN CONCERT

734-712-2323  
[www.cprs-aa.com](http://www.cprs-aa.com)

Paul Izenberg, MD • David Hing, MD • Richard Beil, MD • Daniel Sherick, MD • Ian Lytle, MD • Rachel Streu, MD

# WELCOME.



“One of the many treasures of the University of Michigan that my wife, Monica, and I greatly enjoy is UMS. With its rich legacy of bringing to our community the very best in the performing arts from around the world, UMS has brought great distinction to the University. Equally distinctive are UMS’s outstanding educational programs that animate the performances and provide added value to our students, faculty, alumni, and regional community. Thank you for being part of this remarkable 136-year-old tradition”

A handwritten signature in black ink that reads "Mark Schlissel".

**MARK SCHLISSSEL**  
*President, University of Michigan*

---



“Thank you for joining us at this performance. One of the most exciting features of UMS is our deepened engagement with U-M students and faculty through new programs like our Engaging Performance course, Mellon Faculty Institute, UMS in the Curriculum, 21st Century Artist Internships, and other initiatives. You can learn more about these programs at [ums.org/learn](http://ums.org/learn). On our site you can also learn about our Emmy Award-winning documentary on Hill Auditorium, discover Night School, link to our amazing online archive UMS Rewind, and share your views about today’s performance. You can also see the list of the other performances and events awaiting you this winter season on page 7. If I can ever be of assistance, please get in touch with me at [kenfisch@umich.edu](mailto:kenfisch@umich.edu) or at 734.647.1174”

A handwritten signature in black ink that reads "Ken Fischer".

**KENNETH C. FISCHER**  
*UMS President*

---



“UMS is in its 136th season as an arts presenter, the oldest university-based arts presenting organization in the US. I am extremely honored to be serving in my second year as Chair of the UMS Board of Directors. In partnership with an outstanding staff, the UMS Board seeks to assure that UMS will be as strong and vital in the future as it is today. We invite you to join us in our Victors for UMS campaign, focusing on the goals of Access and Inclusiveness, Engaged Learning Through the Arts, and Bold Artistic Leadership. With your help, UMS can continue to be, as Wynton Marsalis has written, ‘our country’s finest presenting organization...and the standard bearers of excellence.’”

A handwritten signature in black ink that reads "Stephen G. Palms".

**STEPHEN G. PALMS**  
*Chair, UMS Board of Directors*

# SUPPORTING THE ARTS



As a long-time patron of the arts, Honigman is a proud partner of UMS. We wish to thank our colleagues for their leadership and support, including David N. Parsigian, member of the UMS Board of Directors and Treasurer, and Maurice S. Binkow, Carl W. Herstein and Leonard M. Niehoff, members of the UMS Senate.

Honigman and its Ann Arbor lawyers are proud to support UMS.

Fernando Alberdi	Carl Herstein	Cyril Moscow
Jennifer Anderson	Richard Hoeg	Leonard Niehoff
Christopher Ballard	Ann Hollenbeck	David Parsigian
Maurice Binkow	J. Michael Huget	James Stewart
Cindy Bott	Barbara Kaye	Bea Swedlow
Anna Budde	Tara Mahoney	Bill Winsten
Thomas Forster	Joseph Morrison	

For more information, please contact David Parsigian at 734.418.4250 or [DParsigian@honigman.com](mailto:DParsigian@honigman.com).

---

**HONIGMAN**<sup>®</sup>

---

[WWW.HONIGMAN.COM](http://WWW.HONIGMAN.COM)

# CONNECTING AUDIENCES & ARTISTS IN UNCOMMON & ENGAGING EXPERIENCES.

We want you to use this guide as a resource. Dig deeper. Get to know the artists. Figure out how it all comes together. We believe that the performing arts are extraordinary on their own, but we encourage you to explore, gain perspective, and understand the depth behind the experience. This book is designed to help you learn more about UMS, the community, and the artists on stage.

**BE PRESENT.** 7 WINTER 2015 SEASON CALENDAR.  
8 EDUCATION.  
10 HISTORY.

**LEADERSHIP.** 12 UMS LEADERSHIP DONORS.  
14 UMS CORPORATE CHAMPIONS.  
19 FOUNDATION, GOVERNMENT, AND  
UNIVERSITY SUPPORT.

**THE EVENT PROGRAM.** 21 THE EXPERIENCE.  
THE PERFORMANCES.



**LEADERSHIP.  
SUPPORT.** 25 PEOPLE.  
33 GENEROUS UMS DONORS.

**GENERAL INFO.** 47 HOW TO BUY TICKETS.  
49 POLICIES.  
51 GETTING INVOLVED.

# Covering Michigan the way NPR covers the world.



Understand  
Michigan...  
**NEWS**  
**POLITICS**  
**ARTS**  
**BUSINESS**  
**ENVIRONMENT**



91.7 FM Ann Arbor/Detroit  
104.1 FM West Michigan  
91.1 FM Flint  
michiganradio.org  
Your NPR News Station **npr**

## JOIN THE CONVERSATION.

Like the performance?  
Want to learn more?  
Care to give feedback?  
Want to connect with others?

JUST VISIT  
[UMSLOBBY.ORG](http://UMSLOBBY.ORG).



Ann Arbor  
Symphony Orchestra

### MOZART BIRTHDAY BASH

*January 31 @ 8:00 pm  
Michigan Theater*

### ABSOLUT RUSSIAN

*March 21 @ 8:00 pm  
Michigan Theater*

### DISNEY IN CONCERT

*March 22 @ 4:00 pm  
Michigan Theater*

### MAHLER 5

*April 25 @ 8:00 pm  
Hill Auditorium*

(734) 994 - 4801 • [a2so.com](http://a2so.com)



# WINTER 2015 SEASON CALENDAR.

JAN	7-11	<i>Helen &amp; Edgar</i>
	17	eighth blackbird
	18	National Theatre Live: <i>JOHN</i>
	23	Compagnie Marie Chouinard
	24-25	Mariinsky Orchestra Valery Gergiev, music director Behzod Abduraimov, piano (1/24) Denis Matsuev, piano (1/25) Ford Honors Program (1/25)
31	Dawn of Midi: <i>Dysnomia</i>	
FEB	5	Tomasz Stańko, trumpet
	6	Jennifer Koh, violin
	14	Mendelssohn's <i>Elijah</i> UMS Choral Union & Ann Arbor Symphony Orchestra Jerry Blackstone, conductor
	14-21	Compagnie Non Nova <i>Prelude to the Afternoon of a Foehn</i>
	15	Jazz at Lincoln Center Orchestra with Wynton Marsalis
	19	Rotterdam Philharmonic Orchestra Yannick Nézet-Séguin, conductor Hélène Grimaud, piano
	20	50th Anniversary Celebration: The Campbell Brothers perform John Coltrane's <i>A Love Supreme</i>
21-22	Trisha Brown Dance Company	
22	National Theatre Live: <i>Treasure Island</i>	
MAR	8	Stratford Festival in HD: <i>King Lear</i>
	12-13	A Bill Frisell Americana Celebration
	13-14	Kyle Abraham Abraham.In.Motion
	15	RSC Live in HD: <i>Love's Labour's Lost</i>
	22	Chicago Symphony Winds
25	Academy of St. Martin in the Fields Jeremy Denk, piano	
APR	4	Gilberto Gil
	9	Max Raabe and the Palast Orchester
	16	Chick Corea and Herbie Hancock
	17	Oliver Mtukudzi and the Black Spirits
	19	Artemis Quartet
	22	RSC Live in HD: <i>Much Ado About Nothing</i> (aka <i>Love's Labour's Won</i> )
	23	Seoul Philharmonic Orchestra Myung-Whun Chung, conductor Sunwook Kim, piano
	24-26	Lyon Opera Ballet <i>Cinderella</i>
26	Richard Goode, piano	

Artists, programs, and dates are subject to change.  
Please visit [www.ums.org](http://www.ums.org) for an up-to-date season calendar.

To learn more, see video previews, get in-depth performance descriptions,  
and buy tickets, visit [www.ums.org](http://www.ums.org).

# IMMERSE YOURSELF.



## UMS EDUCATION EXPERIENCES.

At UMS, our mission goes beyond performance. We want you to create, to explore, and to experience extraordinary new things. That is why we offer a fascinating lineup of artist Q&As, conversations, workshops, and interactive experiences, each designed to bring you closer to performance and creation, and to expand your comfort zone. If you want to experience something new, different, highly engaging, and eye-opening, we encourage you to be present. Just look for the "Learn" icon.

[UMS.ORG/LEARN](https://www.ums.org/learn)



Photo: Timothy Krohn, orchestra director for Ann Arbor Huron High School, conducts during a school visit by Apollo's Fire, November 2014; photographer: Peter Smith Photography.



## NIGHT SCHOOL: CURIOUS ABOUT DANCE

Mondays, 7-8:30 pm  
February 2-March 16, 2015 (no class on March 2)  
U-M Alumni Center Founder's Room  
(200 Fletcher Street, Ann Arbor)

For some, dance can seem like a mystery. For others, dance unlocks sights, sounds, ideas, and emotions unlike any other art form. How do you experience dance? On the heels of last season's popular UMS Night School: *Bodies in Motion* series, this year's edition of Night School continues to explore dance. Both newcomers and dance aficionados alike are invited to build knowledge about dance and meet others who share an interest in the art form.

Hosted by Clare Croft, assistant professor of dance at the University of Michigan, these 90-minute "classes" combine conversation, interactive exercises, and "lectures" to draw you into the themes related to dance. **Drop in to just one session, or attend them all. Events are free, and no pre-registration is required.** Complete details available at [www.ums.org/learn](http://www.ums.org/learn).

### FEBRUARY

- 2 Words for Dance
- 9 Adapting Stories
- 16 Body Experiments
- 23 Dancing Scholarship

### MARCH

- 9 Dancing Social Justice
- 6 Graduation and Reflection



# CAN TRADITION BUILD THE FUTURE?



At UMS, we believe it can. In our 136th season, we continue to showcase traditional performances alongside contemporary artists for an offering that is unlike anything available in the Midwest. UMS grew from a group of local members of the University and townspeople in the 1870s who gathered together for the study of Handel's *Messiah*. Led by Professor Henry Simmons Frieze and conducted by Professor Calvin Cady, the group assumed the name The Choral Union. Many Choral Union members were also affiliated with the University, and the University Musical Society was established soon after in December 1880.

Since that first season, UMS has expanded greatly and we now present the very best from a wide spectrum of the performing arts: internationally renowned recitalists and orchestras, dance and chamber ensembles, jazz and global music performers, and contemporary stagework and classical theater. Through educational programming, the commissioning of new works, youth programs, artist residencies, and collaborative projects, we continue to strengthen our reputation for artistic distinction and innovation.

# Leadership.

UMS believes in exceptional stewardship of the performing arts, a responsibility shared by many in our community. In the following pages, you'll meet some of the individuals and organizations that help bring our season to the stage.

## UMS LEADERSHIP DONORS.

*The following individuals have made gift commitments of \$50,000 or more for the 2013–14 and/or 2014–15 seasons, or have established a permanent endowment of \$100,000 or more as a part of the Victors for Michigan Campaign.*



### **BERTRAM ASKWITH PATTI ASKWITH KENNER**

“The arts have made a significant difference in my life and my daughter’s life. I want every U-M student to have the opportunity to experience the impact of the performing arts at UMS. This is why I am offering every first and second year student one free ticket – Bert’s Ticket – to introduce them to a cultural experience at Michigan.”



### **ILENE FORSYTH**

“I want to help chamber music flourish in Ann Arbor. My support for the series began with its inception in 1963 and I continue to believe that these concerts help nurture our intellectual life as they stimulate and refresh us.”



### **EUGENE AND EMILY GRANT**

“We are proud to support UMS and the many programs they offer University students. It is great to know that students will have access to the greatest performing artists from around the world. The arts are an important part of a Michigan education.”



## MAXINE AND STUART FRANKEL FOUNDATION

### Maxine and Stuart Frankel

“We are delighted to partner with UMS for the fourth year of the Renegade Series. Supporting Renegade programming allows UMS to provide experiences for the curious, adventurous, and experimental audience member — allowing us to challenge our existing beliefs and push our own boundaries.”



## WALLIS CHERNIACK KLEIN

“The arts are a vital part of one’s education, encouraging one to appreciate complexity, to be creative, and to be inspired by excellence. Therefore, I established an endowment fund at UMS to guarantee that current and future generations of students are able to experience the arts.”



## CANDIS AND HELMUT STERN

“UMS has enriched our lives for many years. In addition to benefiting us, it has enabled the University to recruit and retain talented faculty and students, making a valuable contribution to the quality of life in our community. We are delighted to have established an endowment fund to support a Chamber Arts performance at UMS each year to help preserve this treasure for future generations.”



## ANN AND CLAYTON WILHITE

“Don’t you agree that it is virtually impossible to find someone whose day hasn’t been made better by a UMS music, theater, or dance performance? It could also be true that devoting more of your time, treasure, and talent to UMS will help you to live longer. From personal experience, you can count on us as believers. Come join us. See a performance, volunteer to help, write a check, bring a friend. We look forward to seeing you!”

## UMS CORPORATE CHAMPIONS.

The following businesses have made commitments of \$5,000 or more for the 2014–15 season.



### DOUGLASS R. FOX

*President, Ann Arbor Automotive*

“We at Ann Arbor Automotive are pleased to support the artistic variety and program excellence given to us by UMS.”



### TIMOTHY G. MARSHALL

*President and CEO, Bank of Ann Arbor*

“We take seriously our role as a community bank to invest in our community and Bank of Ann Arbor is pleased to once again support the University Musical Society as a sponsor during the 2014–15 season. We are firm believers that the arts are vital to the vibrancy of our cities, both culturally and economically. While there have been sizable cuts in arts funding over the years by both the private and public sectors, Bank of Ann Arbor is delighted to continue to sponsor UMS year after year.”



### JAMES LOFIEGO

*Ann Arbor and South Central Michigan Regional Bank President, Comerica Bank*

“Comerica is proud to support UMS. UMS continues to enrich the local community by bringing the finest performing arts to Ann Arbor, and we’re pleased to continue to support this longstanding tradition.”



### FAYE ALEXANDER NELSON

*President, DTE Energy Foundation*

“The DTE Energy Foundation is pleased to support exemplary organizations like UMS that inspire the soul, instruct the mind, and enrich the community.”







### **NANCY AND RANDALL FABER**

*Founders, Faber Piano Institute*

“We are proud to support UMS in its tradition of program excellence and outreach that enriches our thoughts, our families, and our community.”



### **JAMES G. VELLA**

*President, Ford Motor Company Fund*

“Through music and the arts, we are inspired to broaden our horizons, bridge differences among cultures, and set our spirits free. We are proud to support UMS and acknowledge the important role it plays in our community.”



Ford Motor Company Fund



### **DAVID N. PARSIGIAN**

*Ann Arbor Office Managing Partner, Honigman Miller Schwartz and Cohn LLP*

“In our firm’s tradition of supporting major cultural institutions, Honigman has been a long-time supporter of UMS. Our Ann Arbor office is proud to carry on that tradition on behalf of all of our attorneys, especially those who work and live in the Ann Arbor area. We all view the exceptional cultural experiences that UMS provides as key to the success of our community and our firm.”

**HONIGMAN**



### **MOHAMAD ISSA**

*Director, Issa Foundation*

“The Issa Foundation is sponsored by the Issa family, which has been established in Ann Arbor for the last 30 years, and is involved in local property management as well as area public schools. The Issa Foundation is devoted to the sharing and acceptance of culture in an effort to change stereotypes and promote peace. UMS has done an outstanding job bringing diverse and talented performers to Ann Arbor.”

**ISSA FOUNDATION**



### **KIRK ALBERT**

*Michigan Market President, KeyBank*

“KeyBank remains a committed supporter of the performing arts in Ann Arbor and we commend UMS for bringing another season of great performances to the community. Thank you, UMS, for continuing the tradition.”

**KeyBank**



### ALBERT M. BERRIZ

*CEO, McKinley, Inc.*

“The success of UMS is based on a commitment to present a diverse mix of quality cultural performances. McKinley is proud to support this tradition of excellence, which enhances and strengthens our community.”

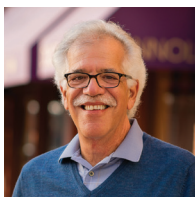
**mckinley**



### THOMAS B. MCMULLEN

*President and CEO, McMullen Properties*

“I used to feel that a U-M-Ohio State football ticket was the best ticket in Ann Arbor. Not anymore. UMS provides the best in educational and artistic entertainment.”

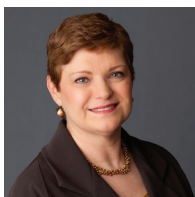


### DENNIS SERRAS

*Owner, Mainstreet Ventures, Inc.*

“As restaurant and catering service owners, we consider ourselves fortunate that our business provides so many opportunities for supporting UMS and its continuing success in bringing internationally acclaimed talent to the Ann Arbor community.”

**MAIN STREET**  
— ventures —  
DISTINCTIVE CATEGORIES.



### SHARON J. ROTHWELL

*Vice President, Corporate Affairs and Chair, Masco Corporation Foundation*

“Masco recognizes and appreciates the value the performing arts bring to the region and to our young people. We applaud the efforts of UMS for its diverse learning opportunities and the impact its programs have on our communities and the cultural leaders of tomorrow.”

**MASCO**



### MICHAEL SPRAGUE

*Executive Vice President, Sales and Marketing, Kia Motors America*

“Kia Motors recognizes the tremendous role that UMS plays in our community through its enriching programs and we are pleased to help bring exceptional cultural and educational experiences to Michigan.”





### SCOTT MERZ

CEO, Michigan Critical Care Consultants, Inc. (MC3)

“MC3 is proud to support UMS in recognition of its success in creating a center of cultural richness in Michigan.”



### STEPHEN G. PALMS

Principal, Miller, Canfield, Paddock and Stone, P.L.C.

“Miller Canfield proudly supports UMS for enhancing our quality of life by bringing the unfiltered immediacy of live performing arts to our community.”



### RICHARD L. DEVORE

Detroit and Southeast Michigan Regional President, PNC Bank

“PNC Bank is proud to support the efforts of UMS and the Ann Arbor community.”



### TODD KEPHART

Managing Partner, Retirement Income Solutions, Inc.

“With strong roots in the community for more than 30 years, our team of investment advisors is proud to support UMS. We recognize and appreciate UMS’s successful history and applaud the organization’s ongoing commitment to presenting authentic, world-renowned artists to the Ann Arbor community.”



Retirement Income Solutions  
Helping to grow and preserve your wealth



### SAVA LELCAJ

Chief Executive Officer, Savco Hospitality

“At Savco Hospitality, we are delighted to support UMS, a wonderful cultural asset that inspires and challenges all of us, and delivers the very best in performing arts season after season.”





### JOE SESI

*President, Sesi Lincoln Volvo Mazda*

"UMS is an important cultural asset for our community. The Sesi Lincoln Volvo Mazda team is delighted to sponsor such a fine organization."



### JOHN W. STOUT

*President, Stout Systems*

"Supporting UMS is really a labor of love — love of music and the performing arts and love of arts advocacy and education. Everyone at Stout Systems knows we cannot truly be successful without helping to make our community a better place. It is an honor to be part of the UMS family."



### OSAMU "SIMON" NAGATA

*President, Toyota Motor Engineering & Manufacturing North America, Inc.*

"Toyota Technical Center is proud to support UMS, an organization with a long and rich history of serving diverse audiences through a wide variety of arts programming."



### TIFFANY FORD

*President, University of Michigan Credit Union*

"Thank you to UMS for enriching our lives. The University of Michigan Credit Union is proud to be a part of another great season of performing arts."



### MARK SCHLISSSEL

*President, University of Michigan*

"The arts are a critical part of a complete education. The University of Michigan is proud to support UMS, which brings outstanding artists to our campus and provides unique educational opportunities for our students."



# FOUNDATION, GOVERNMENT, AND UNIVERSITY SUPPORT.

*UMS gratefully acknowledges the support of the following private foundations, government agencies, and University of Michigan units:*

## \$500,000 AND ABOVE

The Andrew W. Mellon Foundation



## \$20,000-\$499,000

Anonymous

Charles H. Gershenson Trust

University of Michigan Office of the Vice President for Research

University of Michigan Office of the Senior Vice Provost for Academic Affairs



## \$5,000-\$19,999

The Seattle Foundation

University of Michigan Third Century Initiative



# Expanded Professional Counseling Services



## Helping You Balance Life's Challenges

Professional • Trusted • Safe • Accessible • Personalized • Convenient



Most insurance plans accepted

**734-769-0209**

2245 S. State Street • Ann Arbor, MI 48104

# UMS WINTER PRELUDE DINNERS.

Park early, dine with fellow patrons, and enjoy a delicious meal while learning more about the evening's concert from our guest speakers at UMS Prelude Dinners. \$75 per person. For further information and reservations, please call Esther Barrett at 734.764.8489.

**Rotterdam Philharmonic Orchestra**  
Thursday, February 19, 5:30 pm  
Rackham Building

**Academy of St. Martin in the Fields**  
Wednesday, March 25, 5:30 pm  
Rackham Building

**Seoul Philharmonic Orchestra**  
Thursday, April 23, 5:30 pm  
Rackham Building



# THE EXPERIENCE.



## GETTING THE MOST OUT OF THE PERFORMANCE

We know that people enjoy the performance experience in different ways, so we encourage you to think about making choices when you enter the venue that allow you to be present, leave the worries of the day outside, and prepare to receive what the experience holds in store.

Be aware of your surroundings. Connect with the artist or ensemble. What they have to share is a very special gift that comes from a lifetime of training. One of the joys of attending live performances is the ability to share our experiences with one another, so revel in your opportunity to socialize, talk to your friends, discuss the performance, or simply say “hello” to someone new. Feel the energy that a room full of people creates. Look around and take in the entire picture. What goes on in this venue and in this community is truly unique and special, and we must all cherish and protect it.



*A great performance  
every time*



Real Estate Mortgage Title Insurance

At home in Ann Arbor

formerly

Edward Surovell Realtors

[www.howardhanna.com](http://www.howardhanna.com)



Non-local  
bankers  
think UMS  
is the sound  
of Gregorian  
chanting.

At Bank of Ann Arbor, we know Ann Arbor inside and out. We use that knowledge to great advantage to provide the products and services the people of Ann Arbor need.

734-662-1600  
or [boaa.com](http://boaa.com).  
How can we  
help you?



Member FDIC



Photo by Felix Broede



Photo by Mat Hennek / DG

THE  
**GILMORE**  
PIANO MASTERS SERIES  
CHENERY AUDITORIUM, KALAMAZOO

## MURRAY PERAHIA

THE WILLIAM AND NANCY RICHARDSON CONCERT

"I can't ever play a piece exactly the same, ever ...  
I'll decide at the last minute how it's going to go."

— Murray Perahia

MARCH 18, 2015, 8 PM

## HÉLÈNE GRIMAUD

SPONSORED BY ANONYMOUS LOCAL DONORS

"A concert **MUST** be an emotional event; otherwise,  
one can stay home and listen to a recording."

— Hélène Grimaud

APRIL 16, 2015, 8 PM

TICKETS: 269.387.2300 or 800.228.9858

[TheGilmore.org](http://TheGilmore.org)





## PLEASE CONSIDER THE FOLLOWING:

Turn off **cell phones and electronic devices**. We all know how terrible it is when a phone rings during a performance. It breaks that special bond between a performer and the audience. Illuminated screens on phones are also a visual distraction in a darkened theater.

Our **volunteer ushers** are invaluable. They will show you to your seat, give you a program, help solve any problem, answer questions, and welcome you to the experience. Please do not hesitate to ask them for help.

**Wear what you want** to the performance — this is Ann Arbor, after all! If you feel inspired to dress in some way related to the show, go for it. Express your own creativity.

**Unwrapping candies** and cough drops *before* the performance begins cuts down on disruptive noise while the performance is in progress.

Think about whether it is necessary to wear your favorite **perfume** to the performance. Chances are that the folks sitting around you may appreciate an unscented experience.

*The Good News:* most of our performance spaces have world-class acoustics. *The Bad News:* that means that when you **cough or sneeze** you make an especially clear statement to fellow audience members and performers alike. Feel free to ask an usher for **cough drops** when you arrive at a UMS Choral Union Series event and please consider bringing cough drops with you to our other events. It's noisy even if you cover your mouth!

Thankfully, we manage to keep **last-minute changes** to a minimum, but please remember that all artists and programs are subject to change at a moment's notice.

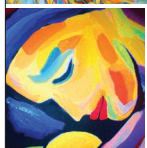
Programs with **larger print** are available. Ask an usher.

We make every effort to **begin performances on time**. The actual start time of a performance always reflects a combination of considerations. Late seating is not guaranteed. If you arrive after a performance has begun, we will seat you if there is an appropriate late seating break in the program. We work together with the artists to determine late seating breaks that will not disrupt their performance or the experience of the audience.

# Experience *The*



## OF SILVER MAPLES



The arts. It enriches relationships, self-confidence and health. That's why Silver Maples celebrates the power of the arts and it is why we attract so many people who love the arts. Our art gallery, art and enrichment classes, the many concerts we share, and our trips to museums and plays, delight our residents.



Tap into your imagination at Silver Maples, a Retirement Neighborhood in Chelsea.



## SILVER MAPLES *of Chelsea*

RETIREMENT NEIGHBORHOOD

INDEPENDENT LIVING ♦ ASSISTED LIVING  
SHORT STAYS ♦ DAY PROGRAMS

# 734.475.4111

[www.silvermaples.org](http://www.silvermaples.org)

Locally-Owned, Non-Profit Jointly Sponsored by the  
Chelsea-Area Wellness Foundation and United  
Methodist Retirement Communities, Inc.

# wgte

Public Media

## Classical Music & NPR News

*Listen online at*  
[www.wgte.org](http://www.wgte.org)

*Listen on the radio at*  
WGTE FM 91.3 Toledo  
WGLE 90.7 Lima  
WGBE 90.9 Bryan  
WGDE 91.9 Defiance



# PEOPLE.

*Those who work to bring you UMS performances each season*

Photo: UMS patrons attend San Francisco Symphony at Hill Auditorium, November 2014; photographer: Peter Smith Photography.

## UMS BOARD OF DIRECTORS

*The UMS Board of Directors is a group of elected volunteers devoted to the performing arts and to our community. Their hard work ensures that UMS is able to offer outstanding performances year after year.*

Stephen G. Palms  
*Chair*

Stephen R. Forrest  
*Vice Chair*

Joel D. Howell  
*Secretary*

David N. Parsigian  
*Treasurer*

Rachel Bendit  
Janet Callaway

David Canter  
Mark Clague

Lisa D. Cook

Julia Donovan Darlow

Monique Deschaine

Tiffany L. Ford

Katherine Goldberg

Richard F. Gutow

Stephen Henderson

Daniel Herwitz

Christopher Kendall

S. Rani Kotha

Frank Legacki

Jeffrey K. MacKie-Mason

Donald L. Morelock

Agnes Moy-Sarns

Sarah Nicoli

Timothy Petersen

Martha E. Pollack

Sharon Rothwell

Mark S. Schlissel

Linh Song

Cheryl L. Soper

Rick Sperling

Victor J. Strecher

Karen Jones Stutz

Jeanice Kerr Swift

*Superintendent, Ann Arbor  
Public Schools*

A. Douglas Rothwell  
*Chair, Corporate Council*

David Herzig  
*Past Board Chair*

Bruce Tuchman  
*Chair, National Council*

Pat Bantle  
*Chair, Advisory Committee*

## UMS SENATE

*The UMS Senate is composed of former members of the Board of Directors who dedicate time and energy to UMS and our community. Their ongoing commitment and gracious support of UMS are greatly appreciated.*

Wadad Abed	Peter N. Heydon	Harold T. Shapiro
Michael C. Allemang	Toni Hoover	George I. Shirley
Carol L. Amster	Kay Hunt	John O. Simpson
Gail Davis-Barnes	Alice Davis Irani	Timothy P. Slottow
Kathleen Benton	Stuart A. Isaac	Anthony L. Smith
Lynda Berg	Thomas E. Kauper	Carol Shalita Smokler
Richard S. Berger	David B. Kennedy	Jorge A. Solis
Maurice S. Binkow	Gloria James Kerry	Peter Sparling
DJ Boehm	Thomas C. Kinnear	James C. Stanley
Lee C. Bollinger	Marvin Krislov	Lois U. Stegeman
Charles W. Borgsdorf	F. Bruce Kulp	Edward D. Surovell
Janice Stevens-Botsford	Leo A. Legatski	James L. Telfer
Paul C. Boylan	Melvin A. Lester	Susan B. Ullich
William M. Broucek	Earl Lewis	Michael D. VanHermert
Barbara Everitt Bryant	Patrick B. Long	Eileen Lappin Weiser
Robert Buckler	Helen B. Love	B. Joseph White
Letitia J. Byrd	Cynthia MacDonald	Marina v.N. Whitman
Kathleen G. Charla	Robert C. Macek	Clayton E. Wilhite
Mary Sue Coleman	Judythe H. Maugh	Iva M. Wilson
Jill A. Corr	Rebecca McGowan	Karen Wolff
Peter B. Corr	Barbara Meadows	
Ronald M. Cresswell	Joetta Mial	
Martha Darling	Lester Monts	
Hal Davis	Alberto Nacif	
Sally Stegeman DiCarlo	Shirley C. Neuman	
Robert F. DiRomualdo	Jan Barney Newman	
Junia Doan	Roger Newton	
Al Dodds	Len Niehoff	
James J. Duderstadt	Gilbert S. Omenn	
Aaron P. Dworkin	Joe E. O'Neal	
David Featherman	Randall Pittman	
David J. Flowers	Phil Power	
George V. Fornero	John D. Psarouthakis	
Maxine J. Frankel	Rossi Ray-Taylor	
Patricia M. Garcia	John W. Reed	
Beverly B. Geltner	Todd Roberts	
Christopher Genteel	Richard H. Rogel	
Anne Glendon	Prudence L. Rosenthal	
Patricia Green	A. Douglas Rothwell	
William S. Hann	Judy Dow Rumelhart	
Shelia M. Harden	Maya Savarino	
Randy J. Harris	Ann Schriber	
Walter L. Harrison	Edward R. Schulak	
Norman G. Herbert	John J.H. Schwarz	
Deborah S. Herbert	Erik H. Serr	
Carl W. Herstein	Ellie Serras	
David Herzig	Joseph A. Sesi	



# THE EVENT PROGRAM.

SATURDAY, APRIL 4 THROUGH  
FRIDAY, APRIL 17, 2015

**3 GILBERTO GIL**

Saturday, April 4, 8:00 pm  
Hill Auditorium

**7 MAX RAABE AND THE PALAST ORCHESTER**

Thursday, April 9, 7:30 pm  
Hill Auditorium

**11 AN EVENING WITH CHICK COREA AND  
HERBIE HANCOCK**

Thursday, April 16, 7:30 pm  
Hill Auditorium

**17 OLIVER MTUKUDZI AND THE BLACK SPIRITS**

Friday, April 17, 8:00 pm  
Michigan Theater

We want this program book to engage you in a conversation that deepens your experience and connection to the performance both inside the theater and after you leave it. We are always conserving resources at UMS. If you are coming to multiple performances within a program book edition, please keep your book and return with it.



# VICTORIES START HERE.

Kojo Elenitoba-Johnson, M.D., is developing new methods to diagnose blood cancers.



**HEALTH SYSTEM**  
UNIVERSITY OF MICHIGAN



UMS PRESENTS

# GILBERTO GIL

Saturday Evening, April 4, 2015 at 8:00  
Hill Auditorium • Ann Arbor

**63rd Performance of the 136th Annual Season  
Global Series**

Photo: Gilberto Gil; photographer: Daryan Dorelles.

## Gilbertos Samba

*Tonight's program will be announced from the stage by Mr. Gil and will be performed without intermission.*

Tonight's performance is sponsored by the University of Michigan Health System.

Special thanks to Sueann Caulfield, Jesse Hoffnung-Garskoff, Elizabeth (Bebete) Martins, and the U-M Center for Latin American and Caribbean Studies' Brazil Initiative for their support of events surrounding tonight's performance by Gilberto Gil.

Gilberto Gil appears by arrangement with International Music Network.

## ARTIST

**GILBERTO GIL**'s illustrious career spans four decades with over 30 albums released, multiple Grammy Awards won, six gold records, four platinum singles, and more than five million records sold. As a singer, guitarist, composer, and diplomat, Mr. Gil plays a key role in the modernization of Brazilian popular music and culture throughout the world. He has tackled a wide variety of issues in his lyrics, including social inequality, race, African and Oriental culture, and science and religion. The mastery with which Mr. Gil explores these subjects makes him one of the greatest Brazilian lyricists to date.

The influence of the culture of Mr. Gil's home country goes back to the 1960s, when he and guitarist/singer Caetano Veloso created the radically innovative Tropicalismo movement, assimilating pop culture to national genres.

Mr. Gil and Mr. Veloso's group released the landmark album *Tropicália: ou Panis et Circenses* in 1968. *Tropicália* represents the conflation of musical and cultural developments occurring in Brazil, the US, and Europe during the 1950s and '60s. The movement was deemed threatening by the Brazilian government of the time, and Mr. Gil and Mr. Veloso were arrested by the Brazilian military police in 1969, served time in prison, and were eventually exiled to London.

While in London, Mr. Gil was influenced by the reggae, rock, and jazz music scenes of the city. He performed with Yes, Pink Floyd, and the Incredible String Band. He also performed solo, recording *Gilberto Gil (Nêga)*.

When he returned to Brazil in 1972, Mr. Gil focused on his musical career and environmental advocacy work.



In the early 1970s he participated in a resurgence of the Afro-Brazilian *afoxé* tradition in Carnaval, joining the Filhos de Gandhi (Sons of Gandhi) performance group, made up of only black Brazilians. In 1980, he worked with Jimmy Cliff to release a cover of “No Woman, No Cry,” a No. 1 hit that introduced reggae to Brazil.

Mr. Gil began his political career in 1987 when he became the Salvador Secretary of Culture. He later founded the environmental protection organization Onda Azul (Blue Wave), which worked to protect Brazilian waters. He simultaneously maintained a full-time musical career, and withdrew temporarily from politics in 1992, following the release of *Parabolicamará*, considered to be one of his most successful works. In 2001 Mr. Gil accepted his nomination to be a Goodwill Ambassador for the Food and Agriculture Organization (FAO) of the United Nations, having promoted the organization before his appointment. When President Luiz Inácio Lula da Silva took office in January 2003, he chose Mr. Gil as Brazil’s Minister of Culture, making him the second black person to serve in the country’s cabinet.

In 1998 the live version of his album *Quanta* won the Grammy Award for “Best World Music Album.” In 2005 he was awarded another Grammy Award for “Best Contemporary World Music Album” for *Eletracústico*. In May 2005 he was awarded the Polar Music Prize by Carl XVI Gustaf of Sweden in Stockholm, the prize’s first Latin American recipient. In October of the same year he received the Légion d’Honneur from the French government, coinciding with the Année du Brésil en France (Brazil’s Year in France).

Mr. Gil’s current Brazilian release, *Gilbertos Samba*, will be released in the US this month. *Gilbertos Samba* is a reinterpretation of old classics recorded by João Gilberto and a variety of other gifted musicians such as Tom Jobim, Vinícius de Moraes, Carlos Lyra, and Caetano Veloso. It is a collection of songs taken from those sung by Mr. Gil on his first albums. The current 2015 North American tour allows audiences to experience the voice of Gilberto Gil, whose career blends with the history and culture of the Brazilian nation.



 umslopeby

Scan for a playlist! A listening guide to the Tropicália movement featuring Gilberto Gil, Caetano Veloso, Gal Costa, and Maria Bethânia.

Download a free QR code reader app on your smart phone, point your camera at the code, and scan to see multimedia content; or visit [www.umslobby.org](http://www.umslobby.org) to find these stories.



UMS ARCHIVES

This evening’s performance marks **Gilberto Gil**’s third appearance under UMS auspices. Mr. Gil made his UMS debut in a solo concert in March 2007 at Hill Auditorium.



TONIGHT'S VICTORS FOR UMS:

# MICHAEL AND LESLEE PERLSTEIN

SUPPORTERS OF TONIGHT'S PERFORMANCE BY  
MAX RAABE AND THE PALAST ORCHESTER.



## LYON OPERA BALLET *CINDERELLA*

**Maguy Marin, choreographer**

Friday April 24, 8 pm

Saturday, April 25, 8 pm

Sunday, April 26, 2 pm

Power Center

Maguy Marin's magical retelling of *Cinderella* unfolds in a three-story dollhouse, in a child's world of toys and wonder.

SPONSORED BY

 **OLD NATIONAL BANK**

MEDIA PARTNER

Michigan Radio 91.7 FM

**Tickets on Sale Now**

For more information, visit  
[www.ums.org](http://www.ums.org) or call 734.764.2538.

 **ums**  
BE PRESENT



UMS PRESENTS

# MAX RAABE AND THE PALAST ORCHESTER

Max Raabe, *Vocals*

Cecilia Crisafulli, *Violin*

Thomas Huder, *Trumpet, Vocals*

Michael Enders, *Musical Director, Trumpet, Vocals*

Jörn Ranke, *Trombone, Viola, Vocals*

Bernd Frank, *Tenor Saxophone, Clarinet*

Johannes Ernst, *Alto Saxophone, Clarinet*

Sven Bährens, *Alto Saxophone, Clarinet*

Rainer Fox, *Baritone Saxophone, Clarinet, Vocals*

Vincent Riewe, *Drums, Percussion*

Bernd Hugo Dieterich, *Double Bass, Sousaphone*

Ulrich Hoffmeier, *Guitar, Banjo, Violin*

Jan Wekwerth, *Piano*

Thursday Evening, April 9, 2015 at 7:30

Hill Auditorium • Ann Arbor

**64th Performance of the 136th Annual Season**

Photo: Max Raabe; photographer: Marcus Hoehn.

## PROGRAM

---

*Tonight's program will be announced from the stage by the artists and will be performed with one intermission.*

---

Tonight's performance is supported by Michael and Leslee Perlstein.

Media partnership is provided by Michigan Radio 91.7 FM.

Max Raabe and the Palast Orchester appear by arrangement with Opus 3 Artists.

---

## ARTISTS

Dashing, dapper, and debonair, **MAX RAABE** might have walked straight out of the Golden Age of Berlin in the 1920s. With his elegant poise, suave sophistication, and silky-smooth baritone, he brings to life the songs and style of a bygone age.

But with a vintage revival sweeping the US, and growing numbers of twenty-somethings donning tuxedos, flapper dresses, and feathered head-bands to do the Charleston, the time has never been better to discover the singer bringing such timeless tunes to a new generation.

Born into a family of farmers, Mr. Raabe's childhood musical tastes were formed by his discovery of a weekly program of music from the 1920s on German radio. By age 16 he was an expert on the songs and styles of the Weimar era, his enthusiasm fuelled by black-and-white films featuring music, dance, and comedy.

In his early 20s Mr. Raabe moved to Berlin to study opera. After graduating, he formed the **PALAST ORCHESTER** with fellow students to play the music of the 1920s that he so loved.

His ageless Peter Pan looks and impeccable style onstage and offstage have already made him a legend in his native Germany. In America, multi-city tours and enthusiastic coverage have earned him similar heights in popularity. Audiences around the world have been entertained not only by his meticulous recreations of songs in formal evening wear, they have also been rolling in the aisles at his deadpan jokes. Mr. Raabe is an example of that most unexpected quality: German humor.

Mr. Raabe's witty concert announcements, in which he shares brief background to each song, provide a humorous counterpoint to the music. Despite that, the songs are treated with the utmost reverence.

The ensemble recently released a new DVD/CD entitled *A Night in Berlin*, recorded live at Admiralspalast Berlin in 2014 and published by Universal/Decca.

Therein lies the appeal of Max Raabe, a man out of time, yet entirely in tune with today's world, where we all want to take our minds off austerity with a night of good old-fashioned entertainment.

### Palast Orchester

Frank Ebeling, *Production Manager*  
 Bernd Meyer-Lellek, *Sound Engineer*  
 Dirk Lehmann, *Lighting Designer*  
 Wilfried Haase, *Office Manager*



UMS ARCHIVES

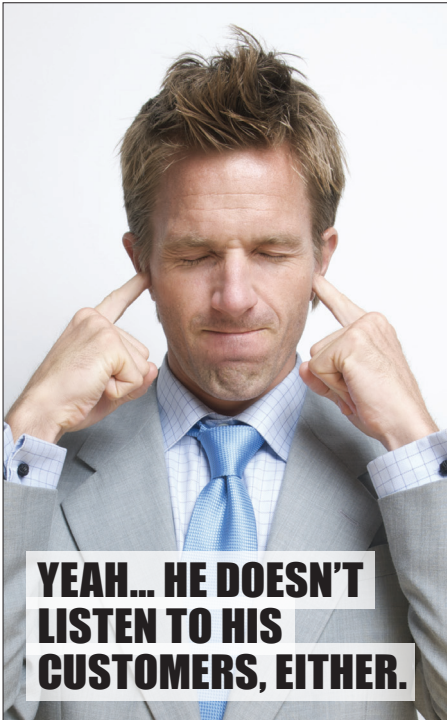
This evening's performance marks **Max Raabe and the Palast Orchester's** second appearance under UMS auspices. Mr. Raabe and the Orchester made their UMS debut in March 2012 at Hill Auditorium.



TONIGHT'S VICTORS FOR UMS:

# ARBORBIKE — STOUT SYSTEMS

SUPPORTERS OF TONIGHT'S PERFORMANCE BY  
CHICK COREA AND HERBIE HANCOCK.



**YEAH... HE DOESN'T  
LISTEN TO HIS  
CUSTOMERS, EITHER.**

If he finds listening to this UMS performance too challenging, can he really listen to your company's software and staffing needs?

At Stout we listen. We're ready to be challenged. By demanding projects. By new and different ideas.

**That's why we're proud to sponsor the University Musical Society**

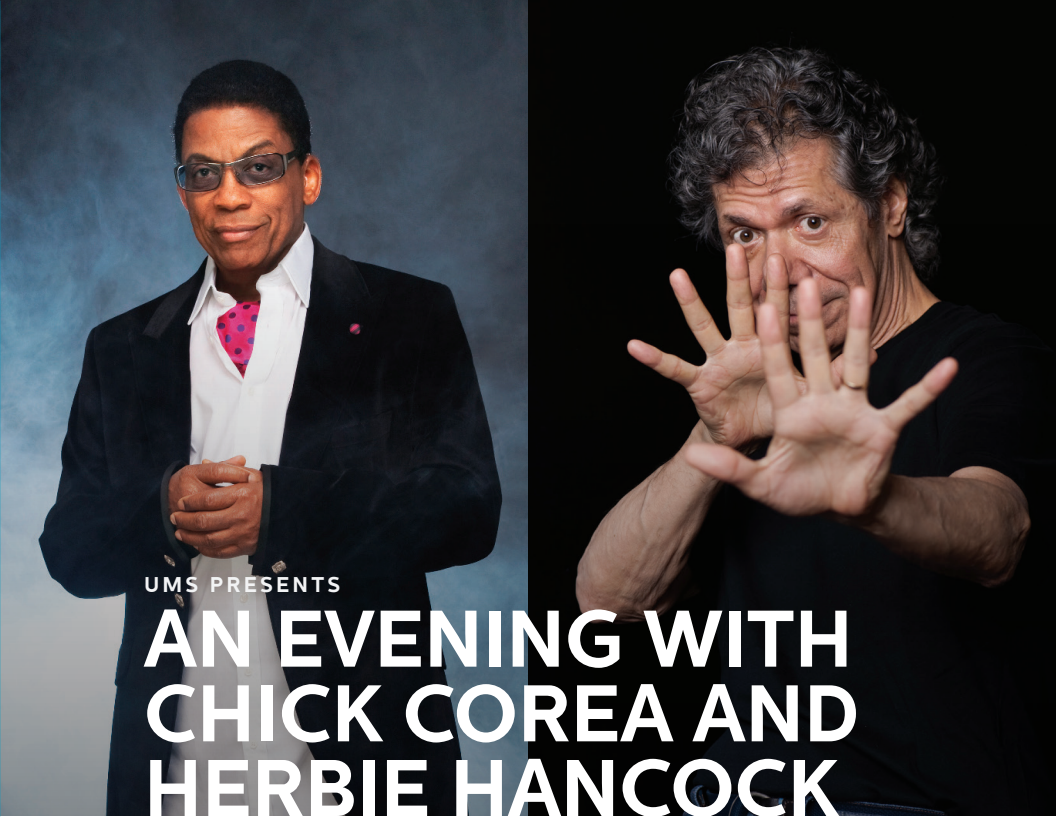
in its efforts to connect audiences with performing artists from around the world in uncommon and engaging experiences.

 **STOUT**® PO BOX 2934, ANN ARBOR, MI 48106



Fueled by the most powerful  
technology available:  
Human Intelligence.®

Copyright © 2015 Stout Systems Development, Inc. All Rights Reserved. STOUT and FUELED BY THE MOST POWERFUL TECHNOLOGY AVAILABLE: HUMAN INTELLIGENCE are registered trademarks of Stout Systems Development, Inc.



UMS PRESENTS

# AN EVENING WITH CHICK COREA AND HERBIE HANCOCK

Chick Corea, *Piano and Keyboards*

Herbie Hancock, *Piano and Keyboards*

Thursday Evening, April 16, 2015 at 7:30

Hill Auditorium • Ann Arbor

**65th Performances of the 136th Annual Season**  
**21st Annual Jazz Series**

Photo: Photo: (L-R) Herbie Hancock; photographer: Douglas Kirkland; Chick Corea.

## PROGRAM

---

*Tonight's program will be announced by the artists from the stage and will be performed without intermission.*

---

Tonight's performance is hosted by ArborBike and by Stout Systems.

Endowed support from Jazznet Endowment Fund.

Media partnership provided by WEMU 89.1 FM and Ann Arbor's 107one.

Mr. Corea appears by arrangement with The Kurland Agency.

Mr. Hancock appears by arrangement with Paradigm Talent Agency, New York, NY.

---



## ARTISTS

**C**HICK COREA is a *DownBeat* Hall of Famer and NEA Jazz Master, as well as the fourth-most nominated artist in Grammy Awards history with 63 nods – and 22 wins, in addition to a number of Latin Grammys. From straight-ahead to avant-garde, bebop to jazz-rock fusion, children’s songs to chamber and symphonic works, Mr. Corea has touched an astonishing number of musical bases in his career since playing with the bands of Miles Davis in the late 1960s and early 1970s. Yet Mr. Corea has never been more productive than in the 21st century, whether playing acoustic piano or electric keyboards, leading multiple bands, performing solo, or collaborating with a who’s who of music. Underscoring this, he has been named “Artist of the Year” twice this decade in the *DownBeat* Readers Poll. Born in 1941 in Massachusetts, Mr. Corea remains a tireless creative spirit, continually reinventing himself through his art. As the *New York Times* states, he is “a luminary, ebullient and eternally youthful.”

Mr. Corea’s classic albums as a leader or co-leader include *Now He Sings, Now He Sobs* (with Miroslav Vitous and Roy Haynes; Blue Note, 1968), *Paris Concert* (with Circle: Anthony Braxton, Dave Holland, and Barry Altschul; ECM, 1971) and *Return to Forever* (with Return to Forever: Joe Farrell, Stanley Clarke, Airtio Moreria, and Flora Purim; ECM, 1972), and *Crystal Silence* (with Gary Burton; ECM, 1973). A venturesome collaborator, Mr. Corea has teamed with artists from jazz legend Lionel Hampton to new-generation pianist Stefano Bollani, from banjo virtuoso Béla Fleck to vocal

superstar Bobby McFerrin. Mr. Corea’s duo partnerships with Gary Burton and Herbie Hancock have endured decades.

The latest release from Mr. Corea, *Trilogy*, a live triple-disc set with bassist Christian McBride and drummer Brian Blade (Concord, 2014) won two Grammy Awards this past February. These mark his 21st and 22nd Grammy wins. The album documents this trio interpreting Mr. Corea’s classic compositions (such as “Spain”), plus previously unreleased pieces by the pianist (“Piano Sonata: The Moon”), an array of jazz standards, and even a prelude by Alexander Scriabin.

In 2012, Mr. Corea’s most recent album with vibraphonist Gary Burton, *Hot House* (Concord), marked the fifth decade of their duo. It earned the pianist two Grammy Awards. Rare for a jazz musician, Mr. Corea received the Richard J. Bogomolny Award from Chamber Music America in 2010, and he broke new ground as a composer with *The Continents: Concerto for Jazz Quintet and Chamber Orchestra*, released in 2013 by Deutsche Grammophon.

For a sold-out international tour, Mr. Corea reconvened his pioneering jazz-rock fusion band Return to Forever, which he founded in 1972. The core of the band – Mr. Corea with original member Stanley Clarke and veteran Lenny White – produced a Grammy-winning acoustic album in 2011 with *Forever* (Concord). In another celebration of kindred spirits, Mr. Corea co-led the Five Peace Band with guitarist and fellow Miles Davis alum John McLaughlin. The group won a Grammy for *Five Peace Band Live* (Concord, 2009).

**H**ERBIE HANCOCK is a true icon of modern music. Throughout his explorations, he has transcended limitations and genres while maintaining his unmistakable voice. With an illustrious career spanning five decades and 14 Grammy Awards, including “Album of the Year” for *River: The Joni Letters*, he continues to amaze audiences across the globe.

There are few artists in the music industry who have had more influence on acoustic and electronic jazz and R&B than Mr. Hancock. As Miles Davis said in his autobiography, “Herbie was the step after Bud Powell and Thelonious Monk, and I haven’t heard anybody yet who has come after him.”

Born in Chicago in 1940, Mr. Hancock was a child piano prodigy who performed a Mozart piano concerto with the Chicago Symphony Orchestra at age 11. He developed a passion for electronics and science, and double-majored in music and electrical engineering at Grinnell College.

In 1960, Mr. Hancock was discovered by Detroit trumpeter Donald Byrd. After two years of session work, he signed with Blue Note as a solo artist. His 1963 debut album, *Takin’ Off*, was an immediate success, producing the hit “Watermelon Man.” In 1963, Miles Davis invited Mr. Hancock to join the Miles Davis Quintet. During his five years with Davis, Mr. Hancock and his colleagues Wayne Shorter (tenor sax), Ron Carter (bass), and Tony Williams (drums) recorded many classic albums, including *ESP*, *Nefertiti*, and *Sorcerer*. Later on, he appeared on Davis’ groundbreaking *In a Silent Way*.

Mr. Hancock’s own solo career blossomed on Blue Note, with classic albums including *Maiden Voyage*, *Empyrean Isles*, and *Speak Like a Child*. He composed the score to Michelangelo Antonioni’s 1966 film *Blow Up*, which led

to a successful career in feature film and television music.

After leaving Davis, Mr. Hancock put together a new band called The Headhunters and, in 1973, recorded *Head Hunters*. With its crossover hit single “Chameleon,” it became the first jazz album to go platinum. By mid-decade, he was playing for stadium-sized crowds all over the world and had four albums in the pop charts at once. In total, he had 11 albums in the pop charts during the 1970s. His 1970’s output inspired and provided samples for generations of hip-hop and dance music artists. Mr. Hancock also stayed close to his love of acoustic jazz in the 1970s, recording and performing with VSOP (reuniting him with his Miles Davis colleagues) and in duet settings with Chick Corea and Oscar Peterson.

In 1983, a new pull to the alternative side led Mr. Hancock to a series of collaborations with Bill Laswell. The first, *Future Shock*, again struck platinum, and the single, “Rockit,” rocked the dance and R&B charts, winning a Grammy for “Best R&B Instrumental.” The video of the track won five MTV awards.

Mr. Hancock won an Oscar in 1986 for scoring the film *Round Midnight*, in which he also appeared as an actor.

In 2007, Mr. Hancock recorded and released *River: The Joni Letters*, a tribute to longtime friend and collaborator Joni Mitchell. The album received glowing reviews and was a year-end Top 10 choice for many critics. It also garnered three Grammy Awards, including “Album of the Year.” Mr. Hancock is one of only a handful of jazz musicians ever to receive that honor.

In 2010 Mr. Hancock released *Herbie Hancock’s The Imagine Project*, winner of two 2011 Grammy Awards for “Best Pop Collaboration” and “Best Improvised Jazz Solo.”

Mr. Hancock also maintains a thriving career outside the performing stage and recording studio. Recently named Creative Chair for Jazz by the Los Angeles Philharmonic, he currently also serves as Institute Chairman of the Thelonious Monk Institute of Jazz, the foremost international organization devoted to the development of jazz performance and education worldwide. Mr. Hancock is also a founder of The International Committee of Artists for Peace and was awarded Commandeur des Arts et des Lettres by the French

Prime Minister.

Mr. Hancock was designated a UNESCO Goodwill Ambassador in 2011. In 2013, he was the recipient of a prestigious Kennedy Center Honor, and in 2014 he was named the 2014 Norton Professor of Poetry at Harvard University, recently completing his lectures series, *The Ethics of Jazz*, as part of the Charles Eliot Norton Lecture Series for a period of six weeks. His memoirs, *Herbie Hancock: Possibilities*, will be published by Viking in the Fall.



Scan for Ann Arbor history! Did you know that the U-M student group Eclipse Jazz presented Herbie Hancock and Chick Corea in concert to a sold-out Hill Auditorium in 1978?

Download a free QR code reader app on your smart phone, point your camera at the code, and scan to see multimedia content; or visit [www.umslobby.org](http://www.umslobby.org) to find these stories.



## UMS ARCHIVES

This evening's concert marks **Chick Corea's** fourth and **Herbie Hancock's** third appearances under UMS auspices. Mr. Corea made his UMS debut with his Quartet (featuring Bob Berg, John Patitucci, and Gary Novak) in October 1994 at the Power Center. He most recently appeared under UMS auspices in April 2009 with Five Peace Band, co-led by guitarist John McLaughlin, at Hill Auditorium. Mr. Hancock made his UMS debut in a duet concert with fellow Miles Davis alum and saxophonist Wayne Shorter in November 2000 at the Michigan Theater. He returned to Ann Arbor with his Quartet (featuring Gary Thomas, Scott Colley, and Terri Lyne Carrington) in November 2002 at the Michigan Theater.

# BE A VICTOR FOR UMS.

Building our endowment is critical to the long-term financial security of UMS. You can help us protect the future of this important organization by including UMS in your estate plan. Together, we can ensure that the wonderful experiences of seeing world-class performing arts that we have so enjoyed will continue for generations to come.

For information about making a planned gift to UMS, please contact Margaret McKinley at 734.647.1177 or [margiem@umich.edu](mailto:margiem@umich.edu).

 **ums**  
BE PRESENT



UMS PRESENTS

# OLIVER MTUKUDZI AND THE BLACK SPIRITS

Oliver Mtukudzi, *Acoustic Guitar, Vocals*

Samson Mataure, *Drums*

Alice Muringayi, *Backing Vocals*

Enock Piroro, *Bass, Backing Vocals*

Munya Mataruse, *Electric Guitar, Backing Vocals*

Herbert Kinobe, *Kora, Mbira*

Friday Evening, April 17, 2015 at 8:00

Michigan Theater • Ann Arbor

**66th Performance of the 136th Annual Season  
Global Series**

Photo: Oliver Mtukudzi.

## PROGRAM

---

*Tonight's program will be announced by the artists from the stage and will be performed without intermission.*

---

Media partnership provided by WEMU 89.1 FM and Ann Arbor's 107one.

Oliver Mtukudzi and the Black Spirits appear by arrangement with FliArtists.

## ARTISTS

One of Africa's musical giants, Zimbabwe's **OLIVER MTUKUDZI** ("Tuku") is a guitarist, vocalist, performer, and composer. His influence is so wide-reaching that he is one of the few people to have a beat named after him.

Considered to be Zimbabwe's pride, most successful artist, and national treasure, Tuku is gifted with a deep and gusty voice and a talent for writing songs that reflects upon the daily life and struggles of his people. Tuku began performing in 1977 and has earned a devoted following across Africa and beyond, all the while incorporating elements of different musical traditions. A member of Zimbabwe's Kore Kore tribe, he sings in the nation's dominant Shona language as well as in Ndebele and English.

Tuku's music is heavily influenced by a humanist *chimurenga* ethos, which, in turn, is inspired by the hypnotic rhythms of the *mbira* (thumb piano). His music also

incorporates South Africa *mbaqanga*, the energetic Zimbabwean pop style *jit*, and the traditional *kateke* drumming of his clan. One of Tuku's biggest fans is Bonnie Raitt, who has not only called Tuku "a treasure," and recorded a cover of "Hear Me Lord," but also credits Tuku as the inspiration for the song "One Belief Away" recorded on her album *Fundamental*.

Tuku is one of the most successful African recording artists in North America, having sold hundreds of thousands of records on Putumayo, Heads Up/Telarc, and Sheer Sound. Tuku is an alumni of Acoustic Africa II (2011 edition) and a UNICEF Goodwill Ambassador for Eastern and Southern Africa, focusing on Young People's Development and HIV and AIDS Prevention.

*UMS welcomes Oliver Mtukudzi and the Black Spirits in their UMS debut this evening.*



 umslobby

Scan for a playlist! Themes of social change are common in popular African music. In this listening guide, explore some of the history of this connection.

Download a free QR code reader app on your smart phone, point your camera at the code, and scan to see multimedia content; or visit [www.umslobby.org](http://www.umslobby.org) to find these stories.

# 2015-16 SEASON ANNOUNCEMENT!

The 2015-16 UMS season is positively brimming with must-see performances. In fact, there are so many incredible options that we're announcing the Choral Union and Chamber Arts series early this season, with subscriptions to these packages on sale now. Take a peek, mark your calendars, and plan something special.

## 137<sup>TH</sup> ANNUAL CHORAL UNION SERIES

10/9-11

New York Philharmonic  
Alan Gilbert, music director

10/29

Chicago Symphony Orchestra  
Riccardo Muti, music director and conductor

11/20

Leif Ove Andsnes, piano

1/11

Royal Philharmonic Orchestra  
Pinchas Zukerman, principal guest  
conductor and violin

2/6

Igor Levit, piano

2/20

Sir András Schiff, piano  
*The Last Sonatas of Haydn, Mozart,  
Beethoven, and Schubert*

3/19

Montreal Symphony  
Kent Nagano, music director  
Daniil Trifonov, piano

3/26

*Bach Six Solos*  
Gil Shaham, violin  
With video installation by David Michalek

4/16

Bavarian Radio Orchestra  
Mariss Jansons, music director

## 53<sup>RD</sup> ANNUAL CHAMBER ARTS SERIES

9/27

Sphinx Virtuosi with the Catalyst Quartet and  
Gabriela Lena Frank

11/6

Danish String Quartet

12/2

Takács Quartet

1/22

Chamber Music Society of Lincoln Center

2/16 & 2/18

Sir András Schiff, piano

4/8

Jerusalem String Quartet

The remainder of the 2015-16 season  
will be announced in late April.





## UMS NATIONAL COUNCIL

*The UMS National Council is composed of U-M alumni and performing arts enthusiasts across the country committed to supporting, promoting, and advocating for UMS with a focus on ensuring that the performing arts are an integral part of the student experience.*

Bruce Tuchman  
*Chair*

Andrew Bernstein  
Kathleen G. Charla  
Jacqueline Davis  
Marylene Delbourg-Delphis  
John and Betty Edman  
Janet Eilber

Barbara Fleischman  
Maxine Frankel  
Eugene Grant  
Charles Hamlen  
Katherine D. Hein  
David Heleniak  
Patti Kenner  
Wallis C. Klein  
Jerry and Dale Kolins

Zarin Mehta  
Jordan Morgan  
James A. Read  
Herbert Ruben  
James and Nancy Stanley  
Russell Willis Taylor  
Ann and Clayton Wilhite

## UMS CORPORATE COUNCIL

*The UMS Corporate Council is a group of regional business leaders who serve as advocates and advisors to UMS as we seek to broaden our base of corporate support throughout southeastern Michigan.*

A. Douglas Rothwell  
*Chair*

Albert Berriz  
Bruce Brownlee  
Robert Buckler  
Robert Casalou

Richard L. DeVore  
Nolan Finley  
Stephen R. Forrest  
Michele Hodges  
Mary Kramer  
David Parsigian  
Vivian Pickard

Sharon Rothwell  
Frederick E. Shell  
Michael B. Staebler  
James G. Vella  
Stephen G. Palms,  
*Ex-Officio*

## UMS STUDENTS

*Students in our volunteer internship and work-study program gain valuable experience in all areas of arts management while contributing greatly to UMS's continued success.*

Maryam Ahmed  
Andrew Bader  
Megan Boczar  
Rebecca Boelzner  
Clare Brennan  
Gabrielle Carels  
Abigail Choi  
Catherine Cypert  
Anna Darnell  
Kathryn DeBartolomeis  
Sophia Deery\*  
Adam DesJardins  
Thomas Erickson  
Katrina Fasulo  
Mysti Hawkins

Trevor Hoffman  
Marina Hogue  
Annie Jacobson  
Garret Jones  
Travis Jones  
Ayantu Kebede  
Meredith Kelly  
Saba Keramati  
Scott Kloosterman  
Emily Kloska  
Caitlyn Koester  
Alexandra Koi  
Bridget Kojima  
Flores Komatsu\*  
Hillary Kooistra\*

Jordan Miller  
Gunnar Moll  
Claire Pegram  
Elias Rodriguez  
Nisreen Salka  
Elizabeth Seidner\*  
Marissa Solomon  
Priyanka Srivastava  
Haylie Stewart  
Rachel Stopchinski  
Edward Sundra  
Jocelyn Weberg

\* 21st Century Artist Interns

**WKAR** thanks the University Musical Society for such high-caliber performances and an amazing schedule this season.

You can explore the arts everyday by tuning into:

**WKAR - TV,**  
**video.wkar.org**  
and **90.5 FM**

**WKAR**  
NETWORK OF OPPORTUNITY



Information on WKAR Support



*Kensington Court*

ANN ARBOR



Proudly Supports the

**University Musical Society**

610 Hilton Blvd | Ann Arbor, MI 48108  
(734) 761-7800 | [kcourtaa.com](http://kcourtaa.com)



Join us for cocktails and dinner at our two Ann Arbor restaurants for a spectacular meal after the performance.



Serving steaks cut in our own market, Knight's famous prime rib, falling-off-the-bone ribs, burgers, seafood, salads, daily specials, "home-baked" bread and desserts.

***Knight's Steakhouse***

600 East Liberty • 734/887-6899  
2324 Dexter Avenue • 734/665-8644  
Open Daily 11 a.m. to Midnight - Liberty St.  
*Preferred Seating Available*  
[www.Knightsrestaurants.com](http://www.Knightsrestaurants.com)



**See, touch and smell the  
Green Earth difference.  
Non-toxic**

An environmentally friendly new  
way of dry cleaning.



2268 S. Main St.  
Located by Busch's on the corner of  
S. Main St. and Ann Arbor-Saline Rd.

734-998-1245  
[www.irisdrycleaners.com](http://www.irisdrycleaners.com)

## UMS FACULTY INSIGHT GROUP

*As part of the UMS Mellon Initiative on Arts/Academic Integration, this group advises UMS staff on opportunities to integrate our programming more deeply and systematically into the academic life of the University of Michigan.*

Mark Clague	Marjorie Horton	Lester Monts
Clare Croft	Joel Howell	Melody Racine
Philip J. Deloria	Daniel Klionsky	Katie Richards-Schuster
Angela Dillard	Lawrence La Fountain-	Sidonie Smith
Gillian Eaton	Stokes	Emily Wilcox
Linda Gregerson	Tim McKay	

## UMS TEACHER INSIGHT GROUP

*Through UMS Teacher Insight, we stay aware of trends, changing resources, and new opportunities for learning in the K-12 classroom.*

Robin Bailey	Neha Shah	Melissa Poli
Jennifer Burton	Cecelia Sharpe	Rebeca Pietrzak
Jeff Gaynor	Karen McDonald	Mark Salzer

## UMS AMBASSADORS

*UMS Ambassadors (formally known as the Advisory Committee) advance the goals of UMS, champion the UMS mission through community engagement, provide and secure financial support, and assist UMS in countless other ways.*

Pat Bantle <i>Chair</i>	Laurel Fisher	Barbara Mulay
	Rosamund Forrest	Magda Munteanu
Louise Taylor <i>Vice Chair</i>	Zita Gillis	Marjorie Oliver
	Nicki Griffith	Liz Othman
Connie Rizzolo Brown <i>Secretary</i>	Joan Grissing	Betty Palms
	Stephanie Hale	Karen Pancost
Jane Holland <i>Treasurer</i>	Debbie Jackson	Lisa Patrell
	Carol Kaplan	Anna Peterson
Gail Ferguson Stout <i>Past Chair</i>	Nancy Karp	Ruth Petit
	Kendra Kerr	Susan Pollans
Sassa Akervall	Freddi Kilburn	Anne Preston
Sandy Aquino	Kyle Klobucar	Jeff Reece
Karen Bantel	Russell Larson	Polly Ricciardo
Gail Bendit	Marci Raver Lash	Kathy Rich
Corry Berkooz	Jean Long	Nan Richter
Dennis J. Carter	Laura Machida	Audrey Schwimmer
Judy Cohen	Katie Malicke	William Shell
Sheila Crowley	Rita Malone	Arlene P. Shy
Jon Desenberg	Valerie Roedenbeck	Ren Snyder
Annemarie Kilburn Dolan	Maloof	Linda Spector
Sharon Peterson Dort	Melanie Mandell	Janet Torno
Gloria J. Edwards	Ann Martin	Elaine Tetreault
Christina Ferris	Fran Martin	Martha Williams
	Terry Meerkov	Sarajane Winkelman
	Amy J. Moore	Wendy K. Zellers

## UMS STAFF

*The UMS Staff works hard to inspire individuals and enrich communities by connecting audiences and artists in uncommon and engaging experiences.*

### ADMINISTRATION & FINANCE

Kenneth C. Fischer  
*President*

John B. Kennard, Jr.  
*Director of Administration*

Kathy Brown  
*Executive Assistant*

Jenny Graf  
*Tessitura Systems Administrator*

Patricia Hayes  
*Financial Manager*

John Peckham  
*Information Systems Manager*

### DEVELOPMENT

Margaret McKinley  
*Director of Development*

Esther Barrett  
*Development Coordinator*

Susan Bozell Craig  
*Associate Director of Development, Corporate Partnerships & Major Gifts*

Rachelle Lesko  
*Annual Fund Manager*

Lisa Michiko Murray  
*Senior Manager of Foundation & Government Relations*

Marnie Reid  
*Associate Director of Development, Major Gifts*

Cindy Straub  
*Manager of Volunteers & Special Events*

Mary A. Walker  
*Associate Director of Development, Major Gifts*

### EDUCATION & COMMUNITY ENGAGEMENT

James P. Leija  
*Director of Education & Community Engagement*

Shannon Fitzsimons  
*Campus Engagement Specialist*

Teresa C. Park  
*Education Coordinator*

Mary Roeder  
*Associate Manager of Community Engagement*

### MARKETING & COMMUNICATIONS

Sara Billmann  
*Director of Marketing & Communications*

Jesse Meria  
*Video Production Specialist*

Annick Odom  
*Marketing Coordinator*

Anna Prushinskaya  
*Manager of New Media & Online Initiatives*

Truly Render  
*Press & Marketing Manager*

### PROGRAMMING & PRODUCTION

Michael J. Kondziolka  
*Director of Programming*

Jeffrey Beyersdorf  
*Production Director*

Anne Grove  
*Artist Services Manager*

Mark Jacobson  
*Senior Programming Manager*

Katie Lantz  
*Production Coordinator*

Liz Stover Rosenthal  
*Associate Programming Manager*

### TICKET OFFICE

Christina Bellows  
*Ticket Services Manager*

Kate Gorman  
*Front-of-House Manager*

Ellen Miller  
*Ticket Office/Front-of-House Assistant*

Anné Renforth  
*Ticket Services Coordinator*

Anna Simmons  
*Assistant Ticket Services Manager*

Melanie Toney  
*Ticket Services Assistant*

Dennis Carter, Bruce Oshaben, Brian Roddy  
*Head Ushers*

### UMS CHORAL UNION

Jerry Blackstone  
*Conductor & Music Director*

Arianne Abela  
*Assistant Conductor*

Kathleen Operhall  
*Chorus Manager*

Nancy Heaton  
*Chorus Librarian*

Jean Schneider  
*Accompanist*

Scott VanOrnum  
*Accompanist*

# Support.

UMS excites the imagination, sparks creativity, sharpens collaboration, inspires new ways of thinking, and connects us in ways that only the arts can.

Ticket sales, however, cover less than 40% of the world-class programs that benefit our students and community.

Your gift of any size will enable UMS to deliver **bold artistic leadership**, to create **engaged learning through the arts**, and to provide **access and inclusiveness**.

NOW IS THE TIME.

**Be a Victor for UMS.**  
**Be a Victor for the Arts.**  
**Be a Victor for Michigan.**

Please send your gift to:  
UMS Development  
881 N. University Ave.  
Ann Arbor, MI 48109-1011

For more information, please visit [www.ums.org/support](http://www.ums.org/support) or call Margaret McKinley at 734.647.1177.



# Great performances should stir emotion. Retirement planning should not.



Our clients sleep well at night, trusting that we are diligently and proactively caring for all of their family's financial affairs.

As a locally owned, independent financial advisory firm serving the U-M community and families throughout the area for more than 30 years, we are proud to support the outstanding performances UMS brings to Ann Arbor.

734-769-7727  
[www.risadvisory.com](http://www.risadvisory.com)



Retirement Income Solutions

*Helping to grow and preserve your wealth*

© 2014 Retirement Income Solutions is an Independent Investment Advisor.



## Celebrating 136 Successful Seasons

**Jaffe**  
JAFFE RAITT HEUER & WEISS  
*A Professional Corporation*  
Attorneys & Counselors

*proud supporter of*

**ums**  
BE PRESENT

535 W. WILLIAM STREET, SUITE 400S • ANN ARBOR, MICHIGAN 48103  
P: 734.222.4776 • F: 734.222.4769

[www.jaffelaw.com](http://www.jaffelaw.com)

ANN ARBOR • SOUTHFIELD • DETROIT • NAPLES

# Reinhart

[ReinhartRealtors.com](http://ReinhartRealtors.com)

## Proudly Supporting The University Musical Society

*Pitch Perfect,  
every time!*

The real estate leader in Ann Arbor for over 40 years

734-747-7888  

# GENEROUS UMS DONORS.

## CAMPAIGN GIFTS AND MULTI-YEAR PLEDGES

*To help ensure the future of UMS, the following donors have made pledges that are payable over a period of up to five years. We are grateful to these generous donors for their commitments.*

### **\$500,000 OR MORE**

Ilene H. Forsyth  
Maxine and Stuart Frankel Foundation  
Eugene and Emily Grant Family Foundation  
The Andrew W. Mellon Foundation  
Candis J. and Helmut F. Stern

### **\$100,000 – \$499,999**

Anonymous  
Bert Askwith and Patti Askwith Kenner  
Emily W. Bandera  
Dennis Dahlmann  
Sharon and Dallas Dort  
Susan and Richard Gutow  
Wallis Cherniack Klein  
Norma and Dick Sarns  
Ron and Eileen Weiser  
Max Wicha and Sheila Crowley  
Ann and Clayton Wilhite

### **\$75,000 – \$99,999**

David and Phyllis Herzig

### **\$50,000 – \$74,999**

Essel and Menakka Bailey  
Penny and Ken Fischer  
Mohamad Issa/Issa Foundation  
Miller, Canfield, Paddock and Stone, P.L.C.  
Mr. and Mrs. Donald L. Morelock  
Agnes Moy-Sarns and David Sarns and the  
Sarns Family  
Gil Omenn and Martha Darling  
Sharon and Doug Rothwell  
Linda Samuleson and Joel Howell  
Jane and Edward Schulak  
Dennis and Ellie Serras  
Nancy and James Stanley  
Glenn E. Watkins  
Marina and Bob Whitman  
Gerald B. Zelenock

### **\$25,000 – \$49,999**

Carol Amster  
Cheryl Cassidy  
Junia Doan  
John R. Edman and Betty B. Edman  
Charles H. Gershenson Trust  
Anne and Paul Glendon  
Norman and Debbie Herbert  
Carl and Charlene Herstein  
Jerry and Dale Kolins  
Martin Family Foundation  
Lois Stegeman  
Stout Systems  
Karen and David Stutz  
Dody Viola

### **\$15,000 – \$24,999**

Michael and Suzan Alexander  
Ronald and Linda Benson  
Valerie and David Canter  
Sara and Michael Frank  
Wendy and Ted Lawrence  
M. Haskell and Jan Barney Newman  
Eleanor Pollack

### **\$5,000 – \$14,999**

Barbara Anderson and John Romani  
John and Lillian Back  
Suzanne A. and Frederick J. Beutler  
Tim and Robin Damschroder  
Michele Derr  
Ann Martin and Russ Larson  
Eric and Ines Storchok



There's nothing more fulfilling than reaching your potential in daily life, love, work and play. Yet, anger, depression, anxiety, trauma, and low self-esteem create inner roadblocks.

***Talk to us. We can help you free yourself, or someone you love, from inner barriers.***

Carol Barbour, PhD  
Ronald Benson, MD  
Meryl Berlin, PhD  
Susan Cutler, PhD  
Sara Dumas, MD  
Joshua Ehrlich, PhD  
Lena Ehrlich, PsyD  
Harvey Falit, MD  
Erika Homann, PhD

Howard Lerner, PhD  
Barry Miller, MD  
Giovanni Minonne, PhD  
Christina Mueller, MD  
Jack Novick, PhD  
Kerry Kelly Novick  
Jean-Paul Pegeron, MD  
Dwarakanath Rao, MD  
Ivan Sherick, PhD  
Michael Shulman, PhD

Michael Singer, PhD  
Jonathan Sugar, MD  
Dushyant Trivedi, MD  
Jeffrey Urist, PhD  
Gail van Langen, PhD  
David Votruba, PhD  
Dennis Walsh, MD  
Margaret Walsh, PhD  
Mark Ziegler, PhD

**Michigan Psychoanalytic  
INSTITUTE | SOCIETY**

*For change that lasts.*

**Learn more about us. [www.mpi-mps.org](http://www.mpi-mps.org)**

*In Tune  
With Ann Arbor*

♪ 555 Briarwood Circle, Suite 200 ♪  
Ann Arbor, MI 48108 ♪ 734.662.8600

**SMITH HAUGHEY AND  
ITS ATTORNEYS PROUDLY  
SUPPORT THE...**

**UNIVERSITY  
MUSICAL SOCIETY**

*Our Ann Arbor Attorneys:*

Cheryl Chandler	Edward Lynch
Gary Eller	William McCandless
Sharon Kelly	Michael Miller
Veronique Liem	Edward Stein

**SH** SMITH HAUGHEY  
RICE & ROEGGE  
ATTORNEYS AT LAW  
734-213-8000 [www.shrr.com](http://www.shrr.com)  
213 S. ASHLEY, STE. 400  
ANN ARBOR, MI 48104



## ENDOWED FUNDS

*The success of UMS is secured in part by income from UMS endowment funds. You may contribute to an existing endowment fund or establish a named endowment with a minimum gift of \$25,000. We extend our deepest appreciation to the many donors who have established and/or contributed to the following funds:*

H. Gardner and Bonnie Ackley Endowment Fund	Dr. and Mrs. Jerry Kolins Shakespearean Endowment Fund
Herbert S. and Carol Amster Endowment Fund	Frances Mauney Lohr Choral Union Endowment Fund
Catherine S. Arcure Endowment Fund	Natalie Matovinović Endowment Fund
Carl and Isabelle Brauer Endowment Fund	Medical Community Endowment Fund
Dahlmann Sigma Nu Endowment UMS Fund	Dr. Robert and Janet Miller Endowment Fund
Hal and Ann Davis Endowment Fund	NEA Matching Fund
Doris Duke Charitable Foundation Endowment Fund	Ottmar Eberbach Funds
John R. and Betty B. Edman Endowment Fund	Palmer Endowment Fund
Epstein Endowment Fund	Mary R. Romig-deYoung Music Appreciation Fund
Ilene H. Forsyth Endowment Fund	Prudence and Amnon Rosenthal K-12 Education Endowment Fund
Anne and Paul Glendon Endowment Fund	Charles A. Sink Endowment Fund
Susan and Richard Gutow Renegade Ventures Endowment Fund	Herbert E. and Doris Sloan Endowment Fund
George N. and Katherine C. Hall Endowment Fund	James and Nancy Stanley Endowment Fund
Norman and Debbie Herbert Endowment Fund	Susan B. Ullrich Endowment Fund
David and Phyllis Herzig Endowment Fund	UMS Endowment Fund
JazzNet Endowment Fund	The Wallace Endowment Fund
William R. Kinney Endowment Fund	The Zelenock Family Endowment Fund
Wallis Chernaick Klein Endowment for Student Experiences	

## PLANNED GIFTS/BEQUESTS

*We are grateful to the following donors for including UMS in their estate plans. These gifts will provide financial support to UMS for generations to come. For more information, please contact Margaret McKinley at 734.647.1177.*

Anonymous	Penny and Ken Fischer	Joanna McNamara
Bernard and Raquel Agranoff	Susan Ruth Fisher	M. Haskell and
Mike Allemand	Meredith L. and Neal Foster	Jan Barney Newman
Carol and Herb Amster	Thomas and Barbara Gelehrter	Len Niehoff
Neil P. Anderson	Beverly and Gerson Geltner	Dr. and Mrs. Frederick O'Dell
Dr. and Mrs. David G. Anderson	Dr. Sid Gilman and Dr. Carol Barbour	Irena Politano
Catherine S. Arcure	Anne and Paul Glendon	Mr. and Mrs. Dennis M. Powers
Barbara K. and Laurence R. Baker	Debbie and Norman Herbert	Mr. and Mrs. Michael Radock
Rodney and Joan Bentz	Rita and Peter Heydon	Mr. and Mrs. Jack Ricketts
Kathy Benton and Robert Brown	John and Martha Hicks	Prue and Ami Rosenthal
Linda and Maurice Binkow	Gideon and Carol Hoffer	Irma J. Sklenar
Elizabeth S. Bishop	Marilyn G. Jeffs	Art and Elizabeth Solomon
Mr. and Mrs. W. Howard Bond	Thomas C. and Constance M. Kinnear	Richard W. Solt
Mr. and Mrs. Pal E. Borondy	Diane Kirkpatrick	Hildreth Spencer
Barbara Everitt Bryant	Dr. and Mrs. Jerry Kolins	Louise Taylor
Lou and Janet Callaway	Frank Legacki and Alicia Torres	Roy and JoAn Wetzel
Pat and George Chatas	Leo and Kathy Legatski	Ann and Clayton Wilhite
Mr. and Mrs. John Alden Clark	Richard LeSueur	Max Wicha and Sheila Crowley
Mary C. Crichton	Robert and Pearson Macek	Marion Wirick
Alan and Bette Cotzin	Susan McClanahan	Mr. and Mrs. Ronald G. Zollar

**Your bank.  
For community.**

**Proud to support the  
University Musical Society.**



**OLD NATIONAL BANK<sup>®</sup>**

1-800-731-2265  
oldnational.com/community

Member FDIC

0112-069

**Bravo!**

The law firm of Dykema  
applauds the University  
Musical Society for bringing  
the spirit of harmony to our  
community with one sound  
performance after another.

Delivering exceptional  
service to individuals and  
businesses since 1926.

**DYKEMA**

www.dykema.com



## Dentistry as a Fine Art

**Unparalleled Attention to Detail**

We blend creativity and expertise to  
create beautiful, natural-looking smiles.

**Sedation | Implants | Cosmetics | Complex Restoration | Sleep Apnea**

 **DONALDSON  
& GUENTHER**

**734.971.3450**

**dgdent.com**

3100 Eisenhower, Ann Arbor MI 48108

## LIFETIME GIVING OF \$500,000 OR MORE

*The donors listed below have provided significant support to UMS over a number of years. We recognize those whose cumulative giving to UMS totals \$500,000 or more.*

Anonymous  
Linda and Maurice Binkow  
Community Foundation for Southeast Michigan  
Doris Duke Charitable Foundation  
DTE Energy Foundation  
Ford Motor Company Fund and Community Services  
Forest Health Services  
Ilene H. Forsyth  
Maxine and Stuart Frankel Foundation  
Richard and Lillian Ives Trust  
The Andrew W. Mellon Foundation  
Michigan Council for Arts and Cultural Affairs

Michigan Economic Development Corporation  
National Endowment for the Arts  
Pfizer, Inc.  
Randall and Mary Pittman  
Philip and Kathy Power  
Estate of Mary Romig-deYoung  
Herbert E. Sloan, Jr. M.D.  
Candis J. and Helmut F. Stern  
University of Michigan  
University of Michigan Health System  
The Wallace Foundation

## UMS SUPPORT – JULY 1, 2013 – DECEMBER 1, 2014

*The following list includes donors who made gifts to UMS between July 1, 2013 and December 1, 2014. Due to space restraints, we can only list in the UMS program book those who donated \$250 or more. Donors of \$1–\$249 will be included in the online list at [ums.org](http://ums.org).*

# indicates the donor made a contribution to a UMS Endowment Fund

### PRODUCERS (\$500,000 OR MORE)

Ilene H. Forsyth #  
Eugene and Emily Grant Family  
Foundation  
Candis J. and Helmut F. Stern #

### DIRECTORS (\$100,000–\$499,999)

Carl and Isabelle Brauer Fund #  
Ford Motor Company Fund and  
Community Services  
Maxine and Stuart Frankel  
Foundation  
Wallis Cherniack Klein #  
The Andrew W. Mellon Foundation  
University of Michigan Health  
System

### SOLOISTS (\$50,000–\$99,999)

Anonymous  
Anonymous #  
Bert Askwith and Patti Askwith  
Kenner  
Dance/USA  
Doris Duke Charitable Foundation  
Dallas and Sharon Dort #  
DTE Energy Foundation  
Michigan Council for Arts and  
Cultural Affairs  
National Endowment for the Arts  
Linda and Stuart Nelson  
Ann and Clayton Wilhite

### MAESTROS (\$20,000–\$49,999)

Ann Arbor Area Community  
Foundation  
Anonymous  
Anonymous #  
Essel and Menacka Bailey #  
Emily W. Bandera  
John R. Edman and Betty B. Edman #  
Esperance Family Foundation  
Charles H. Gershenson Trust  
Susan and Richard Gutow #  
KeyBank  
Masco Corporation Foundation  
Montague Foundation #  
Roger and Coco Newton #  
Philip and Kathy Power  
Sharon and Doug Rothwell #  
Norma and Dick Sarns  
Jane and Edward Schulak  
Toyota  
University of Michigan Office of the  
Senior Vice Provost for Academic  
Affairs  
University of Michigan Office of the  
Vice President for Research  
Ron and Eileen Weiser  
Max Wicha and Sheila Crowley

### VIRTUOSOS (\$10,000–\$19,999)

Jerry and Gloria Abrams #  
Ann Arbor Regent  
Bank of Ann Arbor  
Joseph A. Bartsch, LSA, Class of '71  
Bell Tower Hotel  
Bendit Foundation  
The Dahlmann Campus Inn  
Alice Dobson  
Jim and Patsy Donahey  
Penny and Ken Fischer  
Stephen and Rosamund Forrest  
Anne and Paul Glendon #  
David and Phyllis Herzig  
Joel Howell and Linda Samuelsen  
Mohamad Issa and the Issa Foundation  
The Japan Foundation  
Frank Legacki and Alicia Torres  
McKinley Associates  
Thomas and Deborah McMullen  
McMullen Properties  
Mrs. Robert E. Meredith #  
Miller, Canfield, Paddock, and Stone,  
PLC  
Mr. and Mrs. Donald L. Morelock  
Agnes Moy-Sarns and David Sarns  
New England Foundation for the Arts  
Old National Bank  
Gil Omenn and Martha Darling  
Michael J. and Leslee Perlstein  
PNC Foundation

**VIRTUOSOS (CONTINUED).**

James Read  
Retirement Income Solutions  
RunSignUp  
Dennis and Ellie Serras  
Joe and Yvonne Sesi  
Sesi Motors  
Irma J. Sklenar Trust  
Nancy and James Stanley  
University of Michigan Credit Union  
Robert O. and Darragh H. Weisman  
Marina and Robert Whitman  
Gerald B. (Jay) Zelenock

**CONCERTMASTERS  
(\$5,000–\$9,999)**

Michael Allemang and Janis Bobrin  
Carol Amster  
Barbara A. Anderson and John H. Romani  
Ann Arbor Automotive  
Anonymous  
Janet and Arnold Aronoff  
Arts at Michigan  
Aventura  
babo: a market by Sava  
Kathy Benton and Robert Brown  
Andrew and Lisa Bernstein  
Gary Boren  
Edward and Mary Cady  
Valerie and David Canter  
Cheryl Cassidy  
Mary Sue and Kenneth Coleman  
America  
The Herbert & Junia Doan  
Foundation  
David and Jo-Anna Featherman  
Barbara G. Fleischman  
Katherine and Tom Goldberg  
Norman and Debbie Herbert #  
Carl W. and Charlene R. Herstein  
Honigman Miller Schwartz and  
Cohn LLP  
James A. Kelly and Mariam C. Noland  
David and Sally Kennedy #  
John S. and James L. Knight  
Foundation  
Jerry and Dale Kolins #  
Samuel and Marilyn Krimm  
Linda Langer and Paula McCracken  
Ted and Wendy Lawrence #  
Richard and Carolyn Lineback  
The Mardi Gras Fund  
Martin Family Foundation  
Natalie Matovinović  
Michigan Critical Care Consultants Inc.  
M. Haskell and Jan Barney Newman  
Virginia and Gordon Nordby  
Rob and Quincy Northrup  
Paula Novelli and Paul Lee and Pearl  
Tim and Sally Petersen  
Eleanor Pollack #  
Prue and Ami Rosenthal  
Herbert and Ernestine Ruben  
Sava's Restaurant  
John W. and Gail Ferguson Stout  
Stout Systems  
Karen and David Stutz #  
The Summer Fund of the Charlevoix  
County Community Foundation  
Bruce G. Tuchman  
United Way of Washtenaw County

University of Michigan Third Century  
Initiative  
Dody Viola

**LEADERS  
(\$2,500–\$4,999)**

Jim and Barbara Adams  
Michael and Suzan Alexander  
Anonymous  
Arts Midwest Touring Fund  
Elizabeth R. Axelson and Donald  
H. Regan  
John and Lillian Back  
Ulysses Balis and Jennifer Wyckoff  
Karen Bantel and Steve Geiringer  
Norman E. Barnett  
Robert and Wanda Bartlett  
Bradford and Lydia Bates  
Anne Beaubien and Phil Berry  
Ronald and Linda Benson  
Suzanne A. and Frederick J. Beutler #  
Blue Nile Restaurant  
John and Denise Carethers  
Carolyn M. Carty and Thomas H. Haug  
Jean and Ken Casey  
Center for Plastic and Reconstructive  
Surgery  
Kathy Cooney and Gary Faerber  
Anne and Howard Cooper  
Culture Source  
Julia Donovan Darlow and John  
Corbett O'Meara  
Marylene Delbourg-Delphis and  
Sophie Delphis  
John Dryden and Diana Raimi  
Rosalie Edwards/Vibrant Ann  
Arbor Fund of the Ann Arbor Area  
Community Foundation  
Joan and Emil Engel  
Betsy Foxman and Michael Boehnke  
Sara and Michael Frank  
Prof. David M. Gates  
Thomas and Barbara Gelehrter  
Germain Honda of Ann Arbor  
Sid Gilman and Carol Barbour  
Elliott and Gayle Greenberg  
Richard and Linda Greene  
John and Helen Griffith  
Lynn and Martin Halbfinger  
Stephanie Hale and Pete Siers  
James and Patricia Kennedy  
Connie and Tom Kinnear  
Diane Kirkpatrick  
Wally and Robert Klein  
Philip and Kathryn Klintworth  
Tim and Kathy Laing  
Carolyn and Donald Lewis  
Carolyn and Paul Lichter  
Lawrence and Rebecca Lohr  
E. Daniel and Kay Long #  
Jean E. Long  
Jeffrey MacKie-Mason and Janet Netz  
Ann W. Martin and Russ Larson  
Ernest and Adèle McCarus  
Erin McKean and Steve Sullivan  
Paul Morel and Linda Woodworth  
Margaret and Randolph Nesse  
William Nolting and Donna Parmelee  
Steve and Betty Palms  
Elizabeth and David Parsigian  
Bertram and Elaine Pitt

Jim and Bonnie Reece  
John W. Reed  
Anthony L. Reffells  
Corliss and Jerry Rosenberg  
Nathaniel and Melody Rowe  
Frances U. and Scott K. Simonds  
Susan M. Smith and Robert H. Gray  
Linda Spector and Peter Jacobson  
Eric and Ines Storch  
Ed and Natalie Surovell  
Judy and Lewis Tann  
Louise Taylor  
Ted and Eileen Thacker  
Keturah Thunder-Haab  
Louise Townley  
Jim Toy

**PATRONS  
(\$1,000–\$2,499)**

Bernard and Raquel Agranoff  
Katherine Aldrich  
Richard and Mona Alonzo  
David G. and Joan M. Anderson  
Christiane and William Anderson  
Dave and Katie Andrea  
Anonymous  
Dr. and Mrs. Rudi Ansbacher  
Harlene and Henry Appelman  
Dr. Frank J. Ascione  
Bob and Martha Ause  
Jonathan Ayers and Teresa Gallagher  
John and Ginny Bareham  
Barracuda Networks  
Cecilia Benner  
Dr. Rosemary R. Berardi and Dr.  
Carolyn R. Zaleon  
Mitchell Bernstein and Jessica Halprin  
John E. Billi and Sheryl Hirsch  
Joan Binkow  
Judy Bobrow and Jon Desenberg  
DJ and Dieter Boehm  
Horace and Francine Bomar  
Margaret and Howard Bond  
Charles and Linda Borgsdorf  
Laurence and Grace Boxer  
Dr. and Mrs. Ralph R. Bozell  
Dale E. and Nancy M. Briggs  
Barbara Everitt Bryant  
Jeannine and Robert Buchanan  
Charles and Joan Burleigh  
Barbara and Al Cain  
Lou and Janet Callaway  
Dan Cameron Family Foundation  
Jean W. Campbell  
Sally Camper and Bob Lyons  
Thomas and Marilou Capo  
Brent and Valerie Carey  
Cheng-Yang Chang MD PhD #  
Tsun and Siu Ying Chang  
Anne Chase  
Patricia Chatas  
Myung Choi  
Clark Hill PLC  
Brian and Cheryl Clarkson  
Ellen and Hubert Cohen  
Judy and Malcolm Cohen  
Chris Conlin  
Mac and Nita Cox  
Tim and Robin Damschroder #  
Susan T. Darrow  
Charles and Kathleen Davenport #

# THE REVIEWS ARE IN!

"Maryanne's marketing strategy got us an offer 10% over asking price before we listed our house!...she clearly goes above and beyond in everything she does!"

— Kevin and Liz

"...an example of what a good honest realtor should be...truly a class act!"

— Steve and Janet

"...her tenacity, experience and knowledge of the market were instrumental...refreshing straightforwardness...superb sounding-board..."

— Ryan and Stephanie

"We have experienced buying and selling homes 28 times over 43 years in 3 countries...Maryanne wins hands down as our favorite realtor of all times!"

— Tony and Chrissie

cell

734.645.3065

e-mail

mteleserealtor1@aol.com

web

www.maryannetelese.com



1898 W. Stadium Blvd.  
Ann Arbor, MI

## MARYANNE TELESE



### PATRONS (CONTINUED).

Elena and Nicholas Delbanco  
Monique and Dennis Deschaine  
Michele Derr  
Sally and Larry DiCarlo  
Molly Dobson  
Peter and Grace Duren  
Barbara and Tony Eichmuller  
Charles and Julia Eisendrath #  
Johanna Epstein and Steven Katz  
Harvey and Elly Falit  
Scott and Kristine Fisher  
Susan Fisher and John Waidley  
Esther Floyd  
Food Art  
Dan and Jill Francis  
Paul and Judith Freedman  
Leon and Marcia Friedman  
Bill and Boc Fulton  
B. Garavaglia  
Tom Gasloli  
Chris and Dara Genteel  
Zita and Wayne Gillis  
Glen Arbor Cabin LLC  
Fred and Barbara Goldberg  
Cozette Grabb  
Martha and Larry Gray  
Leslie and Mary Ellen Guinn  
Marlys Hamill  
Steven and Sheila Hamp  
Jeff Hannah and Nur Akcasu  
Randall L. and Nancy Caine Harbour #  
Martin D. and Connie D. Harris  
Clifford and Alice Hart  
Larry Hastie

Sivana Heller  
Robert M. and Joan F. Howe  
Eileen and Saul Hymans  
Keki and Alice Irani  
Jean Jacobson  
Janet and Wallie Jeffries  
Kent and Mary Johnson #  
Timothy and Jo Wiese Johnson #  
David H. and Gretchen Kennard  
Key Hope Foundation  
Elise K. Kirk  
Carolyn and Jim Knake  
Michael J. Kondziolka and Mathias-  
Philippe Badin  
Barbara and Ronald Kramer  
Donald J. and Jeanne L. Kunz  
Jerry and Marion Lawrence  
John K. Lawrence and  
Jeanine A. DeLay #  
Leo and Kathy Legatski  
Richard LeSueur  
Joan and Melvyn Levitsky  
Fran Lyman  
Lisa and Tim Lynch  
Robert and Pearson Macek  
John and Cheryl Mackrell  
Edwin and Cathy Marcus #  
W. Harry Marsden  
Irwin and Fran Martin  
Mary M. Matthews  
Jerry A. and Deborah Orr May #  
Susan McClanahan and Bill Zimmerman  
W. Joseph McCune and Georgiana  
M. Sanders

Griff and Pat McDonald  
Lyn McHie and John Anderson  
James H. McIntosh and Elaine K. Gazda  
Margaret McKinley  
Semyon and Terry Meerkov  
Melange Bistro  
Harry and Natalie Mobley  
Lester and Jeanne Monts  
THE MOSAIC FOUNDATION  
(of R. & P. Heydon)  
Moscow Philanthropic Fund  
Dana Muir and Tracy Grogan  
Mullick Foundation  
Dan and Sarah Nicoli  
Susan and Mark Orringer #  
Judith A. Pavitt  
Lisa Payne  
Lisa and John Peterson  
Pfizer Foundation  
Juliet S. Pierson  
Susan Pollans and Alan Levy  
Stephen and Bettina Pollock  
Rick and Mary Price  
Ray and Ginny Reilly  
Charles Reinhart Company Realtors  
Malverne Reinhart  
Huda Karaman Rosen  
Richard and Edie Rosenfeld  
Craig and Jan Ruff  
Karem and Lena Sakallah  
Alan and Swanna Salliel  
Maya Savarina  
Ann and Tom Schriber  
John J.H. Schwarz

**PATRONS (CONTINUED).**

Erik and Carol Serr  
 Janet Shatusky  
 Bill and Chris Shell  
 Alyce K. Sigler  
 Carl Simon and Bobbi Low  
 Nancy and Brooks Sitterley  
 Michael Sivak and Enid Wasserman  
 Barbara Furin Sloat  
 Dr. Rodney Smith and Janet Kemink  
 Ren and Susan Snyder  
 Becki Spangler and Peyton Bland  
 Ted St. Antoine  
 Michael B. Staebler and  
 Jennifer R. Poteat  
 Gary and Diane Stahle  
 Lois Stegeman  
 Virginia E. Stein  
 Dalia and Stan Strasius  
 DJ and Kate Sullivan  
 Charlotte B. Sundelson  
 Elaine and Jim Tetreault  
 Jeff and Lisa Tulin-Silver  
 Marianne Udow-Phillips and Bill Phillips  
 Susan B. Ullrich #  
 Jack and Marilyn van der Velde  
 Florence S. Wagner  
 Bob and Liina Wallin  
 Shaomeng Wang and Ju-Yun Li #  
 Joyce Watson and Marty Warshaw  
 Harvey and Robin Wax  
 Karl and Karen Weick  
 Steven Werns MD  
 W. Scott Westerman, Jr.  
 Roy and JoAn Wetzel #  
 Lauren and Gareth Williams  
 Beth and I. W. Winsten  
 Max and Mary Wisgerhof  
 Charles Witke and Aileen Gatten  
 The Worsham Family Foundation

**BENEFACTORS  
 (\$500–\$999)**

Jan and Sassa Akervall  
 Roger Albin and Nili Tannenbaum  
 Gordon and Carol Allardyce #  
 Neil P. Anderson  
 Catherine M. Andrea  
 Ann Arbor Area Convention and  
 Visitors Bureau  
 Ann Arbor Optometry  
 Anonymous  
 Sandy and Charlie Aquino  
 Penny and Arthur Ashe  
 Stephany and Jim Austin  
 Laurence R. and Barbara K. Baker  
 Lisa and Jim Baker  
 Reg and Pat Baker  
 Barbara and Daniel Balbach  
 Bank of America Charitable Foundation  
 Pat Bantle  
 Nancy Barbas and Jonathan Sugar  
 Rosalyn, Joshua, and Beth Barclay  
 David and Monika Barera  
 Frank and Lindsay Tyas Bateman  
 Astrid B. Beck  
 The Benevity Community Impact Fund  
 Merete Blöndal Bengtsson  
 Kathleen G. Benua  
 Helen V. Berg  
 L. S. Berlin and Jean McPhail

Maria and Terry Bertram  
 Sara Billmann and Jeffrey Kuras  
 William and Ilene Birge  
 John Blankley and Maureen Foley  
 R.M. Bradley and C.M. Mistretta  
 David and Sharon Brooks  
 Pamela Brown  
 Lawrence and Valerie Bullen  
 Sean Burton and  
 Dr. Jennifer Scott-Burton  
 Susan and Oliver Cameron  
 Campus Realty  
 Jack and Susan Carlson  
 Janet and Bill Cassebaum  
 Albert C. Cattell  
 John and Camilla Chiapuris  
 Alice S. Cohen  
 Jon Cohn and Daniela Wittmann  
 Conlin Travel  
 Connie and Jim Cook  
 Arnold and Susan Coran  
 Katherine and Clifford Cox  
 Clifford and Laura Craig #  
 John and Mary Curtis  
 Joseph R. Custer MD  
 Roderick and Mary Ann Daane  
 Christopher Dahl and Ruth Rowse  
 Dennis Dahlmann and Patricia Garcia  
 David and Nancy Deromedi  
 Macdonald and Carolin Dick  
 Linda Dintenfass and Ken Wisinski  
 Andrzej and Cynthia Dlugosz  
 Heather and Stuart Dombey  
 Julie and Bruce Dunlap  
 Don and Kathy Duquette  
 Dr. and Mrs. W. Duvernoy  
 Dykema  
 Alan S. Eiser  
 David Engelke and Alexandra Krikos  
 Ernst & Young Foundation  
 Etymotic Research, Inc.  
 Michael and Michaelene Farrell  
 Margaret and John Faulkner  
 Kay Felt  
 Carol Finerman  
 George W. Ford  
 David Fox and Paula Bockenstedt  
 Otto W. and Helga B. Freitag  
 Philip and Renée Woodten Frost  
 Carol Gagliardi and David Flesher  
 Luis and April Gago  
 Janet and Charles Garvin  
 Bob and Julie Gates  
 David and Maureen Ginsburg  
 Meidee Goh and David Fry #  
 Mr. and Mrs. Charles and Janet Goss #  
 Marla Gousseff  
 Christopher and Elaine Graham #  
 Dr. and Mrs. Robert A. Green  
 Linda and Roger Grekin  
 Raymond Grew  
 Werner H. Grilk  
 Ken and Margaret Guire  
 Arthur W. Gulick  
 Talbot and Jan Hack  
 Dr. Don P. Haefner and  
 Dr. Cynthia J. Stewart  
 Helen C. Hall  
 Alan Harnik and Professor  
 Gillian Feeley-Harnik

Dan and Jane Hayes  
 Katherine D. Hein MD  
 Diane S. Hoff  
 Jane and Thomas Holland  
 Kay Holsinger and Douglas C. Wood  
 Ronald and Ann Holz  
 Mabelle Hsueh  
 Jim and Colleen Hume  
 Ann D. Hungerman  
 Isciences, L.L.C.  
 Debbie Jackson  
 Elizabeth Jahn  
 Mattias Jonsson and Johanna Eriksson  
 Mark and Madolyn Kaminski  
 Don and Sue Kaul  
 Christopher Kendall and Susan  
 Schilperoor  
 John Kennard and Debby Carmody  
 Rhea K. Kish  
 Paul and Dana Kissner  
 Jean and Arnold Kluge  
 Regan Knapp and John Scudder  
 Joseph and Marilyn Kokoszka  
 Dr. Melvyn Korobkin and Linda Korobkin  
 Mary L. Kramer #  
 Paul Krutko and Ellyja Jeffries  
 Ken and Maria Laberteaux  
 Donald J. Lachowicz  
 Jane Fryman Laird  
 David Lampe and Susan Rosegrant  
 Henry M. Lederman  
 Derick and Diane Lenters #  
 Sue Leong  
 Jennifer Lewis and Marc Bernstein  
 James and Jean Libs  
 Rod and Robin Little  
 Marilyn and Frode Maaseidvaag  
 Brigitte and Paul Maassen  
 Melvin and Jean Manis  
 Betsy Yvonne Mark  
 Geri and Sheldon Markel  
 Howard L. Mason  
 Judythe and Roger Maugh  
 Olivia Maynard and Olof Karlstrom  
 Martha Mayo and Irwin Goldstein  
 Margaret E. McCarthy  
 Jordan McClellan  
 Margaret McKinley  
 Joanna McNamara and Mel Guyer  
 Bernice and Herbert Merte  
 Lee Meyer  
 Gene and Lois Miller  
 Louise Miller  
 Candice and Andrew Mitchell  
 Bert and Kathy Moberg  
 Olga Ann Moir  
 Lewis and Kara Morgenstern  
 Drs. Louis and Julie Jaffee Nagel  
 Erika Nelson and David Wagener  
 John and Ann Nicklas  
 Len Niehoff, Lisa Rudgers, and  
 J.J. Niehoff  
 Arthur S. Nusbaum  
 Constance and David Osler  
 Marysia Ostafin and George Smillie  
 M. Joseph and Zoe Pearson  
 Jack and Jean Peirce  
 Wesen and William Peterson  
 Joyce Plummer  
 Diana and Bill Pratt

## BENEFACTORS (CONTINUED).

Wallace and Barbara Prince  
Quest Productions  
Doug and Nancy Roosa  
Nancy Rugani  
Mariam Sandweiss  
Ashish and Norma Sarkar  
David W. Schmidt  
Matthew Shapiro and Susan Garetz  
George and Gladys Shirley  
John Shultz Photography  
Bruce M. Siegan  
Sandy and Dick Simon  
Sue and Don Sinta  
Jürgen Skoppek  
Cheryl Soper  
Cynthia Sorensen and Henry Rueter  
Robbie and Bill Stapleton  
Allan and Marcia Stillwagon  
Sandy Talbott and Mark Lindley  
Stephanie Teasley and Thomas Finholt  
Doris H. Terwilliger  
Brad Thompson  
Nigel and Jane Thompson  
Peter, Carrie, and Emma Throm #  
Jonathan Trobe and  
Joan Lowenstein #  
Claire Turcotte  
Joyce Urba and David Kinsella  
Douglas and Andrea Van Houweling  
Brad L. Vincent  
Barbara and Thomas Wagner  
Elizabeth A. and David C. Walker  
Arthur and Renata Wasserman  
Richard and Madelon Weber #  
Deborah Webster and George Miller  
Lyndon Welch  
Kathy White #  
Iris and Fred Whitehouse  
Mac and Rosanne Whitehouse #  
Tabb and Deanna Wile, Birmingham  
Wealth Management Group at  
Morgan Stanley  
Dr. Kay Wilson and Dan Barry  
Thomas K. Wilson  
Lawrence and Mary Wise  
Mary Jean and John Yablonky  
Karen Yamada and Gary Dolce  
Linda Yohn  
Ron and Deb Yonkoski  
Thomas and Karen Zelnik

## ASSOCIATES (\$250–\$499)

Judith Abrams  
Dr. Diane M. Agresta  
Roy Albert  
Helen and David Aminoff  
Anonymous  
Ralph and Elaine Anthony  
Phil and Lorie Arbour  
Eric and Nancy Aupperle  
Brian and Elizabeth Bachynski  
Robert and Mary Baird  
Barbara Barclay  
Alex and Gloria Barends  
Kenneth and Eileen Behmer  
Christina Bellows and Joe Alberts  
Christy and Barney Bentgen  
Rodney and Joan Bentz  
Dan Berland and Lisa Jevens  
William and Patricia Berlin

Sheldon and Barbara Berry  
Elizabeth S. Bishop  
Mary E. Black  
Jerry and Dody Blackstone  
Mr. Mark D. Bomia  
Joel Bregman and Elaine Pomeranz  
Christie Brown and Jerry Davis  
Morton B. and Raya Brown  
Tom and Lori Buiteweg  
Jonathan and Trudy Bulkley  
Tony and Jane Burton  
Jennifer L. Caplis  
Thomas and Colleen Carey  
Barbara Mattison Carr  
Dennis J. Carter  
Susie Carter  
John and Marsha Chamberlin  
Prof. J. Wehrley Chapman and  
Mrs. Patricia Chapman  
Samuel and Roberta Chappell  
Mark and Joan Chesler  
Reginald and Beverly Cioakajlo  
Mark Clague and Laura Jackson  
Janice A. Clark  
Wayne and Melinda Colquitt  
Anne and Edward Comeau  
Minor J. and Susan L. Coon  
Mrs. Katharine Cosovich  
Roger Craig  
Susie Bozell Craig  
Mrs. C. Merle Crawford  
Jean Cunningham and Fawwaz Ulaby  
Marylee Dalton and Lynn Drickamer  
Connie D'Amato  
Sunil and Merial Das  
Art and Lyn Powrie Davidge  
Ed and Ellie Davidson  
Linda Davis and Bob Richter  
Norma and Peter Davis  
Elizabeth Duell  
Bill and Julie Dunifon  
Ed and Mary Durfee  
Swati Dutta  
Dworkin Foundation  
Gavin Eadie and Barbara Murphy  
David Eden Productions, Ltd  
James F. Eder  
Richard and Myrna Edgar  
Gloria J. Edwards  
Morgan and Sally Edwards  
James Ellis and Jean Lawton  
Julie and Charles Ellis  
Thomas A. Fabiszewski  
Claudine Farrand and Daniel Moerman  
Joseph Fazio and Lisa Patrell  
Phillip and Phyllis Fellin  
Kay Felt  
James and Flora Ferrara  
Jeff Fessler and Sue Cutler  
Herschel and Adrienne Fink  
C. Peter and Beverly Fischer  
Harold and Billie Fischer  
Arnold Fleischmann  
Jessica Fogel and Lawrence Weiner  
Scott and Janet Fogler  
Lucia and Doug Freeth  
Stephanie and Tim Freeth  
Tavi Fulkerson and Bill Hampton  
Harriet Fufsfeld  
Enid Galler  
Sandra Gast and Greg Kolecki

Michael Gatti and Lisa Murray  
Beverly and Gerson Geltner  
Dr. Renate V. Gerulaitis  
Dr. Allan Gibbard and Dr. Beth Genne  
J. Martin Gillespie and Tara Gillespie  
Edie Goldenberg  
Edward and Mona Goldman  
Michael L. Gowing  
Jenny Graf  
Jerry M. and Mary K. Gray  
Jeffrey B. Green  
Greg Grieco and Sidonie Smith  
Milton and Susan Gross  
Susan C. Guszynski and  
Gregory F. Mazure  
Lawrence Hack  
George and Mary Haddad  
Michael Halpern  
Susan R. Harris  
Naomi Gottlieb Harrison and  
Theodore Harrison DDS  
Dorothy J. Hastings  
Gabrielle Hecht  
Wendel and Nancy Heers  
Rose and John Henderson  
J. Lawrence Henkel and  
Jacqueline Stearns  
Therese and Alfred Hero  
Elaine Hockman  
Gideon and Carol Hoffer  
Daniel Hoffman  
James S. and Wendy Fisher House  
Harold L. Ingram #  
Joan and John Jackson  
Drs. Maha Hussain and Sal Jafar  
Hank and Karen Jallios  
Mark and Linda Johnson  
Paul and Olga Johnson  
Janet and Jerry Joseph  
Monica and Fritz Kaenzig  
Angela Kane  
Dr. Herbert and Mrs. Jane Kaufer #  
Deborah Keller-Cohen and Evan Cohen  
Nancy Keppelman and Michael Smerza  
Dan and Freddy Kilburn  
Paul and Leah Kileny  
Web and Betty Kirksey  
Shira and Steve Klein  
John and Marcia Knapp  
Michael Koen  
Rosalie and Ron Koenig  
Brenda Krachenberg  
Gary and Barbara Krenz  
Mary Krieger  
Bert and Geraldine Kruse  
Lucy and Kenneth Langa  
Linda M. Langer  
Neal and Anne Laurance  
John and Theresa Lee  
James Leija and Eric Knuth  
Anne and Harvey Leo  
Rachelle Lesko  
Gloria Kitto Lewis  
Jacqueline Lewis  
Marty and Marilyn Lindenauer #  
Arthur and Karen Lindenber  
Ann Marie Lipinski  
Michael and Debra Lisull  
Daniel Little and Bernadette Lintz  
Dr. Len and Betty Lofstrom  
Julie Loftin

## ASSOCIATES (CONTINUED).

Barbara and Michael Lott  
 William and Lois Lovejoy  
 Roger E. Lyons  
 Dr. Donald and Jane MacQueen  
 Martin and Jane Maehr  
 William and Jutta Malm  
 Tom Marini  
 Margaret and Harris McClamroch  
 Bill and Ginny McKeachie  
 Frances McSparran  
 Gerlinda Melchiori  
 Warren and Hilda Merchant  
 Fei Fei and John Metzler  
 Robin and Victor Miesel  
 Jack and Carmen Miller  
 John and Sally Mitani  
 Gordon and Kimberly Mobley  
 Mei-ying Moy  
 Mark and Lesley Mozola  
 Trevor Mudge and Janet Van  
 Valkenburg  
 Tom and Hedi Mulford  
 Drs. George and Kerry Mychaliska #  
 Gerry and Joanne Navarre  
 Glenn Nelson and Margaret Dewar  
 Thomas J. Nelson  
 Kay and Gayl Ness  
 Sarah Winans Newman  
 Richard and Susan Nisbett  
 Laura Nitzberg  
 Christer and Outi Nordman  
 Robert and Elizabeth Oneal  
 Elizabeth Ong  
 Mohammad and J. Elizabeth Othman  
 David and Andrea Page  
 Karen Pancost  
 Kathy Panoff  
 Karen Park and John Beranek  
 Sara Jane Peth  
 Ruth S. Petit  
 Robert and Mary Ann Pierce  
 Donald and Evonne Plantinga  
 Irena and Patrick Politano  
 Pat Pooley  
 Thomas S. Porter  
 Anne Preston  
 Ann Preuss  
 Karen and Berislav Primorac  
 John Psarouthakis and Anitigoni  
 Kefalogiannis  
 The Quarter Bistro  
 Stephen and Agnes Reading  
 Jeff Reece  
 Marnie Reid  
 Anne and Fred Remley  
 Jessica C. Roberts  
 Carrol K. Robertsen  
 Jonathan and Anala Rodgers  
 Susan M. Rose, D.O.  
 Drs. Stephen Rosenblum and  
 Rosalyn Sarver  
 Dr. Daria Rothe  
 Ms. Rosemarie Haag Rowney  
 Carol Rugg and Richard  
 Montmorency  
 Mitchell and Carole Rycus  
 Linda and Leonard Sahn  
 Amy Saldinger and Robert Axelrod  
 Irv and Trudy Salmeen  
 Ina and Terry Sandalow  
 Michael and Kimm Sarosi  
 Joseph M. Saul and Lisa  
 Leutheuser  
 Albert J. and Jane L. Sayed  
 Jochen and Helga Schacht  
 Dick Scheer  
 Suzanne Schluederberg  
 Larry and Bev Seiford  
 Suzanne Selig  
 Harriet Selin  
 Ananda Sen and Mousumi  
 Banerjee  
 Fred Shapiro  
 David and Elvera Shappiro  
 Jamie Sharkey  
 Patrick and Carol Sherry  
 Janet and David Shier  
 Jean and Thomas Shope  
 Hollis and Martha A. Showalter  
 Douglas and Barbara Siders  
 Edward and Kathy Silver  
 Terry M. Silver  
 Robert and Elaine Sims  
 Scott and Joan Singer  
 John and Anne Griffin Sloan  
 Robert Sloan and Ellen Byerlein  
 Carl and Jari Smith  
 David and Renate Smith  
 Robert W. Smith  
 Hanna Song and Peter Toogood  
 Cynthia Sorensen  
 Doris and Larry Spertling  
 Jim Spevak  
 Jeff Spindler  
 David and Ann Staiger  
 Jeff and Kate Stanley  
 James L. Stoddard  
 Cynthia Straub  
 Roger Stutesman  
 Brian and Lee Talbot  
 May Ling Tang  
 Stephan Taylor and  
 Elizabeth Stumbo  
 Textron  
 Denise Thal and David Scobey  
 Tom and Judy Thompson  
 William J. Thornton  
 Patricia and Terri Tompkins  
 Hitomi Tomomura  
 John G. Topliss  
 Donald Tujaka  
 Alvan and Katharine Uhle  
 David Uhlmann and Virginia Murphy  
 Alison and Matthew Uzieblo  
 Karla and Hugo Vandersypen  
 James and Barbara Varani  
 Village Corner, Inc.  
 Maureen and John Voorhees  
 Charles R. and Barbara H. Wallgren  
 MaryLinda and Larry Webster  
 Jack and Jerry Weidenbach  
 Mr. and Mrs. Richard Weiermiller  
 Jack and Carol Weigel  
 Mary Ann Whipple  
 James B. White and Mary F. White  
 Nancy Wiernik  
 Nancy P. Williams  
 Robert J. and Anne Marie Willis  
 Pat and John Wilson  
 Robert Winfield and Lynda Chandler  
 Sarajane Winkelman  
 Lawrence and Mary Wise  
 Steven and Helen Woghin  
 Charlotte A. Wolfe  
 Drs. Margo and Douglas R. Woll #  
 Gail and David Zuk



## TRIBUTE GIFTS

*Gifts have been given in memory of the following people:*

Mel Barclay MD  
Erling Blöndal Bengtsson  
Al Berland  
Bharat Bhushan  
Joan Boyle  
Carl Brauer  
Donald Bryant  
Brian Callahan  
Ralph Carey  
Leon Cohan  
Flip Connell  
Ellwood Derr  
Jim Garavaglia  
Daphne Grew  
Warren L. Hallock  
Lloyd and Edith Herold  
Kenneth G. Holmes

Ronald R. Humphrey  
Roger E. Hunt  
George Killoran  
Ian Krieg  
Mort Lazar  
Barbara Ann Lipinski  
Josip Matovinović MD  
Sharon Anne McAllister  
Paul and Ruth McCracken  
Valerie D. Meyer  
Yetta Miller  
Emerson and Gwendolyn Powrie  
Henry J. Pratt  
Gail Rector  
Dot Reed  
Steffi Reiss  
Stanley Rontal

Nona Schneider  
Tom Schneider  
Marvin Sharon  
Sidney Silber  
Irma Sklenar  
Beverly Slater  
Dr. Herbert Sloan  
Barry Sloat  
Lloyd St. Antoine  
Joan C. Susskind  
Charles Tieman  
Terril Tompkins  
Neil Van Riper  
Douglas O. Wayland  
Angela Welch  
Barbara R. Wykes

*Gifts have been given in honor of the following people:*

The 2013–14 UMS Ambassadors  
Executive Committee  
Jeffrey Andonian  
Nancy L. Ascione  
Rachel Bendit  
Sara Billmann  
Jean W. Campbell  
Beverly Carlisle  
Pat Chapman

Judy Cohen  
Mary Sue Coleman  
Kenneth C. Fischer  
Heather Gates  
Jenny Graf  
Susan and Dick Gutow  
Emanuel Joshua  
Michael Kondziolka  
Katherine Moran

Sharon McAllister  
Susan McClanahan  
Donald and Antoinette Morelock  
Ann Meredith  
John M. Nicklas  
John Reed  
Dianne Widzinski  
Ann and Clayton Wilhite  
Bai Xianyong

SEARCH

# OUR HISTORY. IN YOUR HANDS.

For the last several years, we've been digitizing all of the information from our rich 136-year history. Performance records, program books, photos, and much more are now available online.

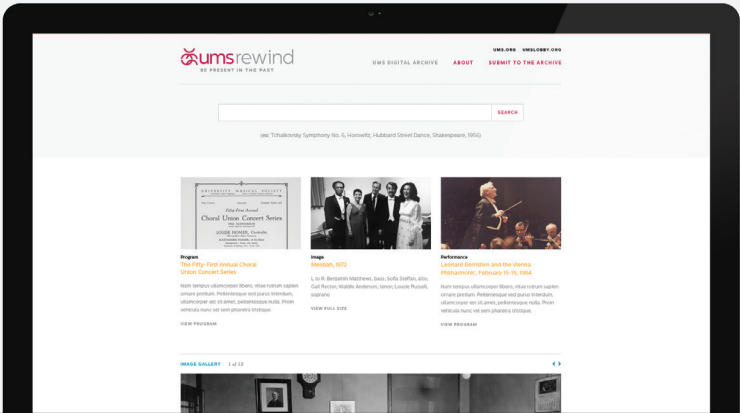
We're proud to announce the launch of our online archives.

We encourage you to explore.



BE PRESENT IN THE PAST

UMSREWIND.ORG



# General Info.

We believe in the energy that comes with being present. Therefore, we want to ensure that you have all of the information you need to fully enjoy your experience. Look through this section to learn more about tickets, policies, accessibility, and opportunities to become more involved with UMS.



CONNECT + EXCEL  
GIVE BACK + CELEBRATE

M

ALUMNI  
ASSOCIATION

**Connect** and harness the power of the U-M community. **Excel** by accessing the best learning for life. **Give back** by supporting our communities, our alumni, and the future leaders and best. **Celebrate** by keeping U-M close, and the spirit alive.

**Join today.**

Connect Forever.

[umalumni.com/join](http://umalumni.com/join)



# HOW TO BUY TICKETS.

## ONLINE

[www.ums.org](http://www.ums.org)

## IN PERSON

UMS Ticket Office  
Michigan League  
911 North University Avenue  
Mon–Fri: 9 am–5 pm  
Sat: 10 am–1 pm

*Venue ticket offices open 90 minutes before each performance for in-person sales only.*

## BY PHONE

**734.764.2538**

(Outside the 734 area code, call toll-free 800.221.1229)

## BY MAIL

**UMS Ticket Office**  
Burton Memorial Tower  
881 North University Avenue  
Ann Arbor, MI 48109-1011

## TICKET DONATIONS/UNUSED TICKETS

If you are unable to use your tickets, please return them to us on or before the performance date (accepted until the published performance time). A receipt will be issued by mail for tax purposes; please consult your tax advisor. Ticket returns count towards UMS giving levels.

## ACCESSIBILITY

All UMS venues have barrier-free entrances for persons with disabilities. For information on access at specific UMS venues, call the Ticket Office at 734.764.2538 or visit [www.ums.org/about/accessibility](http://www.ums.org/about/accessibility). There is no elevator access to Power Center, Michigan Theater, or Lydia Mendelssohn Theatre balconies. Ushers are available for assistance.

## LISTENING SYSTEMS

Assistive listening devices are available in Hill Auditorium, Rackham Auditorium, Lydia Mendelssohn Theatre, Arthur Miller Theatre, and the Power Center. Earphones may be obtained upon arrival. Please ask an usher for assistance.

## LOST AND FOUND

For items lost at Hill Auditorium, Rackham Auditorium, Power Center, Lydia Mendelssohn Theatre, or Arthur Miller Theatre, please visit the University Productions office in the Michigan League on weekdays from 9 am to 5 pm. For St. Francis of Assisi Catholic Church, call 734.821.2111. For Skyline High School, call 734.994.6515. For Trinosophes, call 313.737.6606.

## REFRESHMENTS

Refreshments are available in the lobby during intermissions at events in the Power Center, in the lower lobby of Hill Auditorium, and in the Michigan Theater. Refreshments are not allowed in seating areas.

# Community Foundation

## FOR SOUTHEAST MICHIGAN

Working with individuals, families, businesses and nonprofits throughout the region to create lasting change.

[cfsem.org](http://cfsem.org) | 1-888-WeEndow



## PARKING

We know that parking in downtown Ann Arbor can be difficult and can sometimes take longer than expected. Please allow plenty of time to park. Parking is available in the Church Street, Maynard Street, Thayer Street, Fletcher Street, and Liberty Square structures for a minimal fee.

Valet parking is complimentary for UMS donors at the Virtuoso level (\$10,000 or more annually) for Choral Union Series performances at Hill Auditorium. Valet parking is also available for a fee (\$20 per car) until 30 minutes prior to the concert, and then subject to availability. Cars may be dropped off in front of Hill Auditorium beginning one hour prior to the performance.

FOR UP-TO-DATE PARKING INFORMATION, PLEASE VISIT [WWW.UMS.ORG/PARKING](http://WWW.UMS.ORG/PARKING).

# POLICIES.

## SMOKE-FREE UNIVERSITY

As of July 1, 2011, the smoking of tobacco is not permitted on the grounds of the University of Michigan, including the exteriors of U-M theaters and concert halls. Smoking is allowed on sidewalks adjacent to public roads.

## TICKET EXCHANGES

Subscribers may exchange tickets free of charge up until 48 hours prior to the performance. Non-subscribers may exchange tickets for a \$6 per ticket exchange fee up until 48 hours prior to the performance. Exchanged tickets must be received by the Ticket Office at least 48 hours prior to the performance. You may send your torn tickets to us by mail, fax a photocopy of them to 734.647.1171, or email a scanned copy to [umstix@umich.edu](mailto:umstix@umich.edu). Lost or misplaced tickets cannot be exchanged.

We will accept ticket exchanges within 48 hours of the performance for a \$10 per ticket exchange fee (applies to both subscribers and single ticket buyers). Tickets must be exchanged at least one hour before the published performance time. Tickets received less than one hour before the performance will be returned as a donation until the published start time.

## CHILDREN/FAMILIES

Children under the age of three will not be admitted to regular, full-length UMS performances. All children must be able to sit quietly in their own seats throughout the performance. Children unable to do so, along with the adult accompanying them, may be asked by an usher to leave the auditorium. UMS has posted age recommendations for most performances at [www.ums.org](http://www.ums.org). Please use discretion in choosing to bring a child. Remember, everyone must have a ticket regardless of age. Learn more about budget-friendly family concertgoing at [www.ums.org/kids](http://www.ums.org/kids).



## It's been a harmonious partnership . . . .

from a transformative grant in 1993 that set the stage for UMS' very first Shakespeare residency to helping underwrite UMSRewind.org, a new digital gateway to an online archive of world class performances at UMS.

For over **50** years, we have helped our donors support the arts in ways that enrich the quality of life in our local community.



**Ann Arbor Area**  
Community Foundation

For **good**. For **ever**.™

301 North Main St., Suite 300 • Ann Arbor, Michigan 48104 • P 734.663.0401 • [aaacf.org](http://aaacf.org)



Quite Simply  
**Seafood**  
As It Should Be



The Real Seafood Company is proud to support the University Musical Society, UMS & RSC - a partnership combining the finest culture and cuisine for our community for over 30 years.

Reservations at (888) 456-3463

341 South Main St., Ann Arbor  
[RealSeafoodCoAnnArbor.com](http://RealSeafoodCoAnnArbor.com)



# GETTING INVOLVED.

*For more detailed information on how to get involved with UMS, please visit [www.ums.org/volunteer](http://www.ums.org/volunteer).*

## STUDENT WORK-STUDY/VOLUNTEER INTERNSHIP PROGRAM

Internships with UMS provide valuable experiences in all areas of arts management, including performing arts production, education, administration, ticket sales, programming, development, and marketing. For more information about available positions and how to apply, please visit [www.ums.org/jobs](http://www.ums.org/jobs).

## UMS STUDENT COMMITTEE

The UMS Student Committee is an official U-M student organization dedicated to keeping the campus community connected to the performing arts. For more information on how to join, please email [umsscboard@umich.edu](mailto:umsscboard@umich.edu).

## USHERING

Usher orientation sessions are held twice annually for new and returning ushers. You must attend an orientation to be eligible for ushering. Information about upcoming sessions is available at [www.ums.org/volunteer](http://www.ums.org/volunteer) as sessions are scheduled. For more information, contact Kate Gorman at 734.615.9398 or [fohums@umich.edu](mailto:fohums@umich.edu).

## UMS CHORAL UNION

Open to singers of all ages, the 175-voice UMS Choral Union performs choral music of every genre in presentations throughout the region. Participation in the UMS Choral Union is open to all by audition. Auditions are held in the spring and the fall of each year. To learn more, please contact Kathy Operhall at [kio@umich.edu](mailto:kio@umich.edu) or 734.763.8997.

## UMS AMBASSADORS (FORMERLY KNOWN AS UMS ADVISORY COMMITTEE)

If you are passionate about the arts, are looking for ways to spend time volunteering, and have a desire to connect with our organization on a deeper level, the UMS Ambassadors may be a great match for you. To learn more, please contact Cindy Straub at [cstraub@umich.edu](mailto:cstraub@umich.edu) or 734.647.8009.

## UMS ADVERTISING

- |    |   |     |   |
|----|---|-----|---|
| 50 | Ann Arbor Area Community Foundation           | 39  | Maryanne Telese, Realtor                      |
| 8  | Ann Arbor Symphony Orchestra                  | 34  | Michigan Psychoanalytic Institute and Society |
| 22 | Bank of Ann Arbor                             | 6   | Michigan Radio                                |
| 2  | Center for Plastic and Reconstructive Surgery | 36  | Old National Bank                             |
| 32 | Charles Reinhart Co. Realtors                 | 34  | Real Estate One                               |
| 48 | Community Foundation for Southeast Michigan   | 52  | Red Hawk and Revive + Replenish               |
| 36 | Donaldson & Guenther Dentistry                | 32  | Retirement Income Solutions                   |
| 36 | Dykema  | 24  | Silver Maples of Chelsea                      |
| 22 | Gilmore International Keyboard Festival       | 34  | Smith Haughey Rice & Roegge                   |
| 4  | Honigman Miller Schwartz and Cohn LLP         | 52  | Tom Thompson Flowers                          |
| 22 | Howard Hanna Real Estate Services             | 46  | U-M Alumni Association                        |
| 28 | Iris Dry Cleaners                             | 20  | UMS Prelude Dinners                           |
| 32 | Jaffe, Raitt, Heuer & Weiss PC                | IBC | WEMU  |
| 20 | Jewish Family Services                        | 24  | WGTE  |
| 28 | Kensington Court                              | 28  | WKAR  |
| 28 | Knight's                                      |     |   |
| 50 | Mainstreet Ventures                           |     |   |

IBC = Inside back cover



Contemporary Food  
Classic Décor • Full Bar  
Locally Owned

316 S. State Street  
@ North University  
734-994-4004

[www.redhawkannarbor.com](http://www.redhawkannarbor.com)

**revive**

soups • custom salads • classic sandwiches

**replenish**

essential groceries • beer & wine

619 East University @ Zaragon Place

734-332-3366 • [www.revive-replenish.com](http://www.revive-replenish.com)



**Tom Thompson/Flowers**

**665-4222**

**TomThompsonFlowers.com**

**National Public Radio mixed with local public knowledge.**

|  
—  
**89.1**

Public radio from Eastern Michigan University

npr + jazz + blues + local news [wemu.org](http://wemu.org)

**Jazz is alive. And this is its house number.**

|  
—  
**89.1**

Public radio from Eastern Michigan University

npr + jazz + blues + local news [wemu.org](http://wemu.org)

**What crosstown rivalry?**

|  
—  
**89.1**

Proud to be UMS's media partner for the 2014-15 season

[wemu.org](http://wemu.org)



[ums.org](http://ums.org)

[umslobby.org](http://umslobby.org)

[umsrewind.org](http://umsrewind.org)

[#umslobby](https://twitter.com/umslobby)



Did you like it? Did it move you? Did it change you?  
Did it disappoint? Tell us what you think at [umslobby.org](http://umslobby.org)  
or any of our social media spaces.