

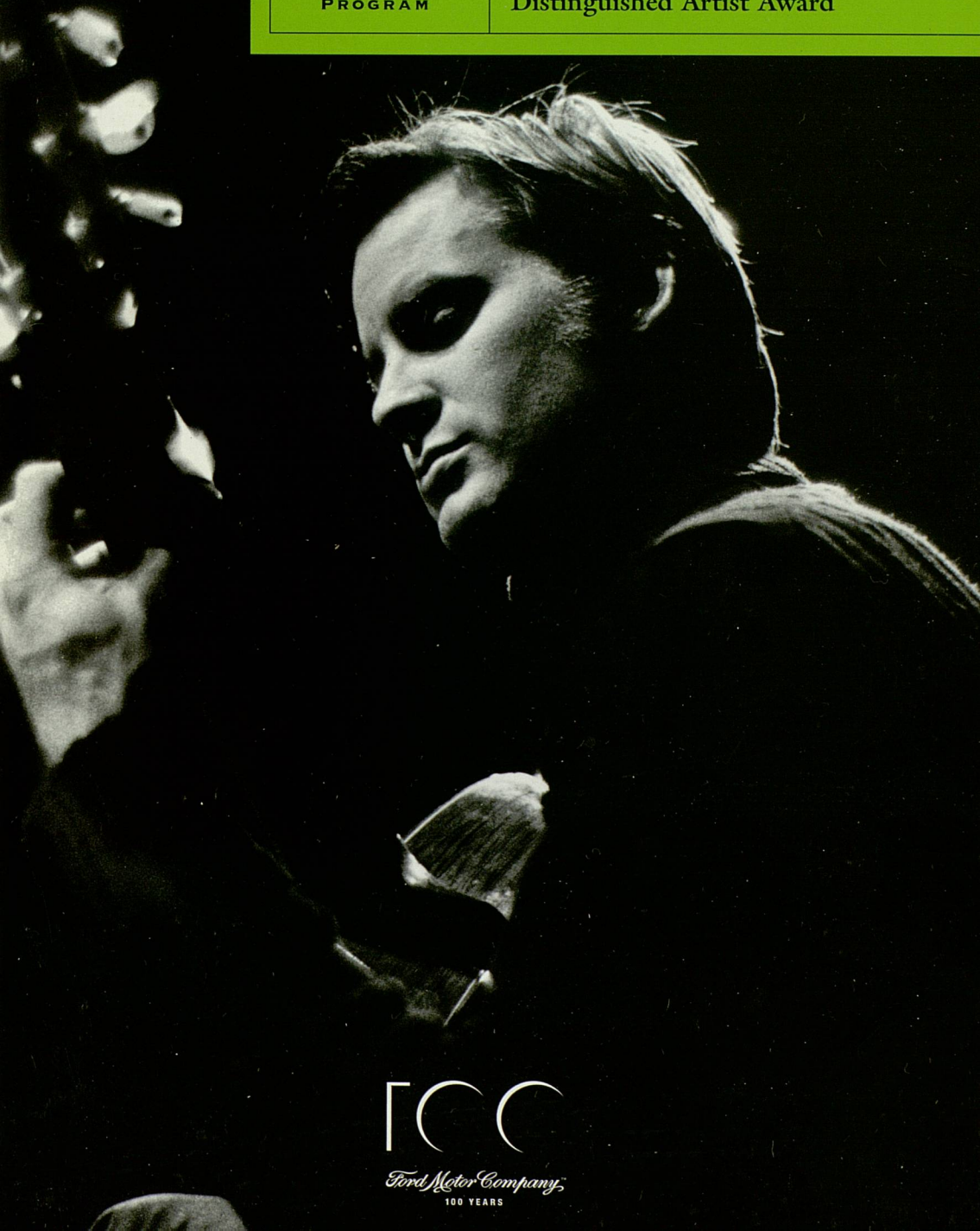


THE 2003
FORD HONORS
PROGRAM

University Musical Society
and Ford Motor Company present

Christopher Parkening

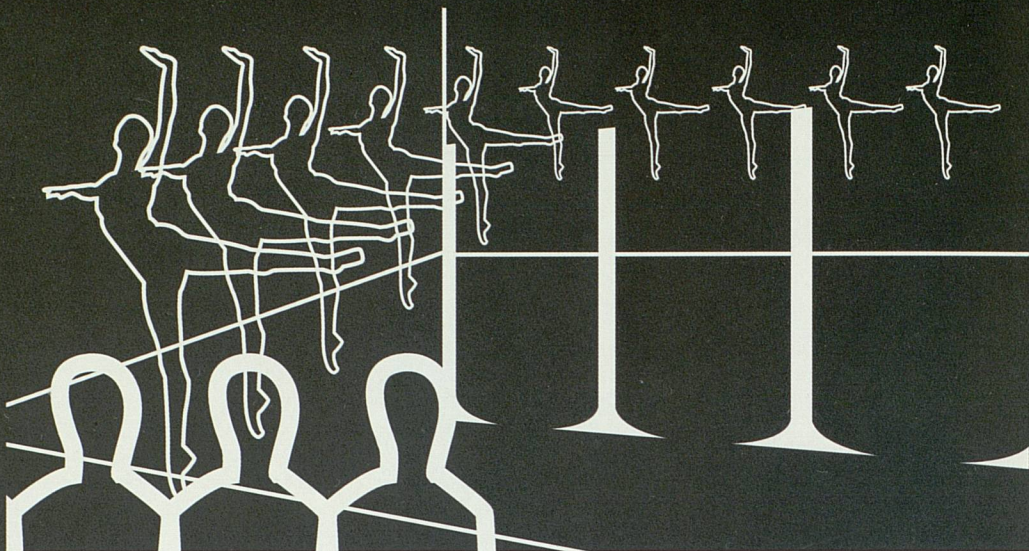
University Musical Society
Distinguished Artist Award



FCC

Ford Motor Company

100 YEARS



Here's to a Spectacular Performance

Because they broaden our understanding
of each other and our communities,
Ford Motor Company is committed to
preserving, promoting and sharing
cultural treasures through our support
of the arts and humanities.

Ford Motor Company applauds
Christopher Parkening for his
contribution to the arts.

Ford Motor Company™

VOLVO

mazda

LINCOLN

Ford

MERCURY

JAGUAR

ASTON MARTIN

LAND
ROVER

A Performance and Tribute to



THE 2003
FORD HONORS
PROGRAM

Christopher Parkening

A Lifetime Tribute

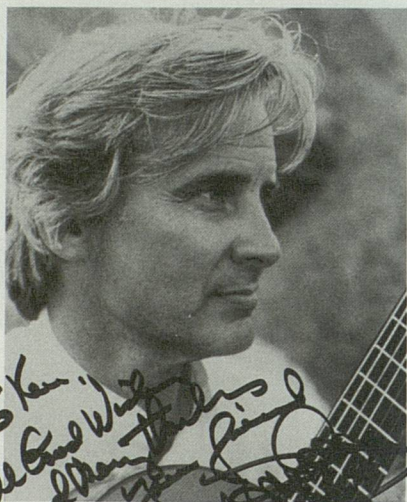
CHRISTOPHER PARKENING
UMS Distinguished Artist Recipient

JUBILANT SYKES
Baritone

KENNETH C. FISCHER
Host

A Benefit for the University Musical Society Education Program
Saturday Evening, May 3, 2003 at 6:00 pm
Rackham Auditorium and Power Center
Ann Arbor, Michigan

Christopher Parkening's
UMS debut: May 2, 1971—
original historic program
from the 78th Annual May
Festival in Hill Auditorium.



CHRISTOPHER PARKENING

IMG Artists

22 East 74th Street
New York, NY 10021

Photo Representation

Shirley Kirshbaum
© Kirshbaum
110 New York Ave., 1001 New York, NY 10002
(212) 512-4000 Fax (212) 512-7100

Photo: Charles Rockwell/ONYX

"A Celebration of Andrés Segovia"—
Christopher Parkening's most recent
UMS recital, January 11, 1998.
Legendary guitarist and musical
mentor Andrés Segovia appeared
nine times himself under UMS
auspices between 1960–1986.

The University Musical Society of The University of Michigan

Presents

The ANN ARBOR May Festival

THE PHILADELPHIA ORCHESTRA
THE UNIVERSITY CHORAL UNION
DONALD BRYANT, Director
THOR JOHNSON, Conductor

SOLOISTS
MARALIN NISKA, *Soprano* JOHN STEWART, *Tenor*
ELEANOR FELVER, *Contralto* DONALD BELL, *Bass*
CHRISTOPHER PARKENING, *Guitarist*

SUNDAY AFTERNOON, MAY 2, 1971, AT 2:30
HILL AUDITORIUM, ANN ARBOR, MICHIGAN

PROGRAM

Mass No. 3 in F minor ("The Great") BRUCKNER
Kyrie Bach
Gloria Beethoven
Credo Agnus Dei

UNIVERSITY CHORAL UNION, MARALIN NISKA, ELEANOR FELVER,
JOHN STEWART, and DONALD BELL
MARK MCCALL STUBBINS, Organist

INTERMISSION

"Fantasia para un gentilhombre" for Guitar and Orchestra ROSSINI

CHRISTOPHER PARKENING

May Festival Program Books on sale in the main lobby.

Fourth Concert 78th Annual May Festival Complete Programs 3726

Personalized to UMS in
January 1998: "To Ken...
All good wishes and
many thanks. Your friend,
Christopher Parkening."

University
Musical
Society
and
Thomas B.
McMullen Co.
present

Christopher Parkening Guitar

Program Sunday Afternoon, January 11, 1998 at 4:00
Rackham Auditorium, Ann Arbor, Michigan

A Celebration of Andrés Segovia

Johann Sebastian Bach

Prelude*

Gavotte*

John Dowland

Galliard and Allemande*

Guspar Sanz

Españoletas

Passacalle de la cavalleria de Napoles

Canarios

Sylvius Leopold Weiss

Prelude

Fernando Sor

Etude No.3 (Op.6, No.2)

Variations on a Theme of Mozart

INTERMISSION

Performance and Tribute Program

Introduction

KENNETH C. FISCHER

President, University Musical Society



Christopher Parkening: Solo Guitar

Gaspar Sanz	Passacalle de la cavalleria de Napoles y Canarios
Heitor Villa-Lobos	Prelude No. 3
Astor Piazzolla	La Muerte del Angel
Manuel Ponce	Preámbulo and Allegro vivo
Traditional	El Noi de La Mare
Andrew York	Jubilation



Christopher Parkening and Jubilant Sykes: A Musical Partnership

Traditional	A City Called Heaven
Traditional	Were You There?
Traditional	Granadinas

Christopher Parkening and UMS

A Video Montage



Presentation of the UMS Distinguished Artist Award

MARY SUE COLEMAN

President, University of Michigan

SANDRA E. ULSH

President, Ford Motor Company Fund

88th Performance of the 124th Season

The Ford Honors Program is made possible by Ford Motor Company. Special thanks to Ford Motor Company for its generous and continued support of the University Musical Society Education and Audience Development Program.

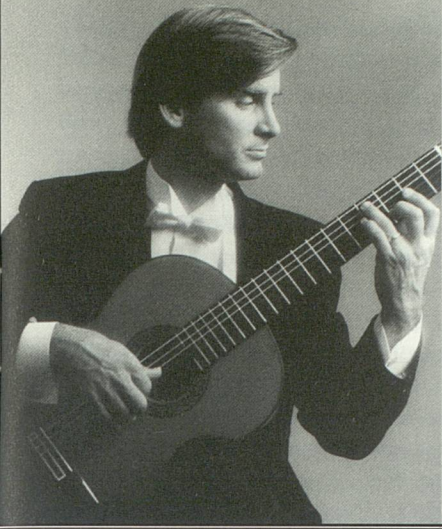
Additional thanks to UMS Advisory Committee Gala Co-chairs Sally Stegeman DiCarlo, Larry DiCarlo, Ingrid Merikoski and Sam Gregg and to all members of the Committee for their care, time and planning of this evening's gala celebration.

*The photographing or
sound recording of this
concert or possession
of any device for such
photographing or sound
recording is prohibited.*

Tonight's floral art is provided by Tom Thompson Flowers, Ann Arbor, Michigan.

Mr. Parkening appears by arrangement with IMG Artists, New York, NY.

Large print programs are available upon request.



“Andrés Segovia was my musical inspiration growing up, and I still desire to follow with excellence the musical tradition he left us.”

—Christopher Parkening

Christopher Parkening is celebrated as one of the world's pre-eminent virtuosos of the classical guitar. For more than a quarter century, his concerts and recordings have received worldwide acclaim. *The Washington Post* cited his stature as “the leading guitar virtuoso of our day, combining profound musical insight with complete technical mastery of his instrument.” Mr. Parkening is recognized as heir to the legacy of the great Spanish artist Andrés Segovia. Following a recent performance, *The Los Angeles Times* noted “Parkening is considered America's reigning classical guitarist, carrying the torch of his mentor, the late Andrés Segovia.”

Mr. Parkening's rare combination of dramatic virtuosity, eloquent musicianship and uniquely beautiful sound has captivated audiences around the world from New York to Tokyo. He has performed at the White House, appeared with Plácido Domingo on *Live from Lincoln Center*, participated in Carnegie Hall's 100th Anniversary celebration and performed twice on the internationally televised Grammy Awards presentation. He also has appeared on many nationally broadcast television programs, including

The Tonight Show, *Good Morning America*, *CBS Sunday Morning*, *The Today Show* and *20/20*. Mr. Parkening was a featured soloist with composer/conductor John Williams on the Sony Classical soundtrack of *Stepmom*, which had a nearly two-year run on *Billboard's* classical crossover chart. Voted “Best Classical Guitarist” in the nationwide readers' poll of *Guitar Player Magazine* for many consecutive years, he was placed in their *Gallery of Greats* along with Andrés Segovia, John Williams and Julian Bream.

Mr. Parkening has been a guest soloist with the finest orchestras in the US, including the Philadelphia, and Cleveland Orchestras, the Chicago, Pittsburgh, and National Symphony Orchestras, the Detroit, Houston and St. Louis Symphonies, the St. Paul and Los Angeles Chamber Orchestras, and the Los Angeles Philharmonic at the Hollywood Bowl. His extensive recital schedule takes him throughout the country, with regular appearances in New York, Boston, Chicago, Philadelphia, Washington DC, Houston and Los Angeles.

Mr. Parkening has amassed an extensive discography on Angel/EMI Classics. He is the recipient of two Grammy nominations in the category of "Best Classical Recording" for *Parkening and the Guitar*, and *The Pleasures of Their Company*, a collaboration with soprano Kathleen Battle. In October of 2000, EMI debuted his recording of Elmer Bernstein's *Concerto for Guitar and Orchestra* along with *The Alhambra: La Vega* by Isaac Albéniz with the London Symphony Orchestra, Elmer Bernstein conducting. In honor of Christopher Parkening's 25th year as a recording artist with Angel/EMI Classics, a two-CD collection, *The Great Recordings*, was issued in celebration of his prolific artistry.

During the current season, Christopher Parkening's recital program features his favorite works by composers such as Joaquín Rodrigo, Manuel Ponce, Castelnuovo-Tedesco, Heitor Villa-Lobos, Stanley Myers, Andrew York, Leo Brouwer, and Carlo Domeniconi in a collection of pieces for solo guitar. Mr. Parkening continues to offer a collaborative recital program with the electrifying baritone Jubilant Sykes, featuring music of Brazil and the Americas. Highlights of Mr. Parkening's 02/03 season include performances with John Williams and the Boston Pops in a nationally televised broadcast on PBS, concerts in Grant Park, Chicago, the Hollywood Bowl, at Royal Albert Hall in London with the Royal Philharmonic Orchestra, the Cincinnati Pops, the Oregon Symphony, and recitals in New York and Pittsburgh.

Mr. Parkening's commitment to music extends beyond his demanding performance schedule. He was recently named Distinguished Professor of Music at Pepperdine University, where he has been appointed the Christopher Parkening Chair in Classical Guitar, an appointment that began this past fall. He also teaches an annual summer master class at Montana State University in Bozeman, Montana. He has authored

Mr. Parkening made his UMS debut as orchestral soloist with the Philadelphia Orchestra on May 2, 1971 during the 78th Annual May Festival in performance of Rodrigo's *Fantasia para un gentilhombre* under the musical direction of Maestro Thor Johnson in Hill Auditorium. Four UMS guitar recitals followed his memorable debut, spanning the period between 1972 and 1993, two of which included longtime musical partner and guitarist David Brandon. In October 1996, Mr. Parkening appeared with the Colorado String Quartet in a program featuring guitar works by Vivaldi, Ginastera and Andrew York. Mr. Parkening's most recent UMS recital — a program entitled *A Celebration of Andrés Segovia* — was a tribute to his musical mentor who himself performed nine times under UMS auspices between 1960 and 1986. Tonight, Christopher Parkening will continue the great tradition of classical guitar performance in Ann Arbor, in his eighth appearance under UMS auspices.

The Christopher Parkening Guitar Method, Volumes I and II, basic pedagogy books for beginning and advanced players. These editions, along with his collection of guitar transcriptions and arrangements, are published by Hal Leonard Corporation.

Mr. Parkening has received commendations honoring his dedication and artistry, including an Honorary Doctorate of Music from Montana State University and the Outstanding Alumnus Award from the University of Southern California. In addition, he was given the acclaimed American Academy of Achievement Award for excellence in the field of music both nationally and internationally. Recently, Christopher Parkening was presented with the 2000 Orville H. Gibson Lifetime Achievement Award for Best Classical Guitarist.

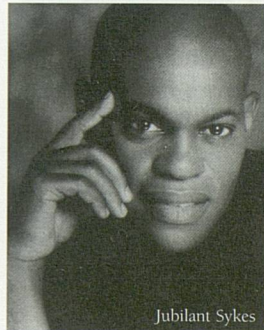
Christopher Parkening and his wife, Theresa, reside in Southern California. He is also a world-class fly-fisherman and casting champion who has won the International Gold Cup Tarpon Tournament (the "Wimbledon of fly-fishing") held in Islamorada, Florida. 🐟

Jubilant Sykes, lauded by the *Wall Street Journal* as one of "the next major stars," brings a new dimension to the traditional career of the classically trained baritone by drawing on gospel and jazz influences. Mr. Sykes has won the attention and respect of the world's finest conductors, symphonies and opera companies including Kurt Masur and the New York Philharmonic, the Chicago Symphony, the Metropolitan Opera, the Cleveland Orchestra, the Los Angeles Philharmonic, and the Philadelphia Orchestra. The California native brings "mesmerizing conviction and remarkable agility of both character and technique" (*The Los Angeles Times*) to a wide-ranging repertoire.

Mr. Sykes's versatility has fostered extensive musical collaboration. *Jubilant*, his first recording under his exclusive contract with Sony Classical, brings the singer together with acclaimed jazz trumpeter and composer Terence Blanchard. His latest recording, *Wait For Me*, released in Spring 2001, features classic songs by Bruce Springsteen, Bob Dylan and The Beach Boys' Brian Wilson.

During the past season, Mr. Sykes performed programs that included music ranging from Bach to Copland to his own fresh interpretations of traditional American spirituals. Mr. Sykes performed in concert with the San Francisco Symphony, the Ravinia Festival Orchestra, and the Colorado Spring Symphony. Mr. Sykes's recital appearances took him to the UCLA Center for the Performing Arts, Mercer College, Spivey Hall and Arizona State University. He toured with guitarist Christopher Parkening with their collaborative program entitled *Braziliana*, featuring songs of South American composers.

In the current season, Mr. Sykes continues his popular recital tour including



music from Schubert to Sondheim as well as special galas featuring popular opera arias to Broadway's greatest hits. He will perform in Carnegie Hall, Benaroya Hall in Seattle, as well

as in a popular college recital series across America. Mr. Sykes will perform pops and classical programs in Milwaukee, St. Louis, Hartford, West Virginia, and with the Orchestra of St. Luke's.

Career highlights include performances with such noted conductors as Christoph Eschenbach, Marvin Hamlisch, Raymond Leppard, Andrew Litton, Keith Lockhart,

Lorin Maazel, John Nelson, John Williams and David Zinman. He has performed with the Chicago Symphony Orchestra, Lincoln Center Chamber Ensemble, Baltimore Symphony, Boston Symphony, Cleveland Orchestra, Philadelphia Orchestra and the Los Angeles Philharmonic at the Hollywood Bowl.

Mr. Sykes currently lives in California with his wife and three young sons. For more information on him, please visit his website www.jubilantsykes.com.

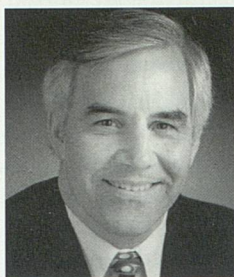
Tonight's appearance with Christopher Parkening marks Jubilant Sykes's UMS debut.

The Ford Honors Program

The Ford Honors Program is a University Musical Society program made possible by a generous grant from Ford Motor Company and by the special support of many other companies and individuals. Each year UMS honors a world-renowned artist or ensemble with whom UMS has maintained a long-standing and significant relationship. In one evening, UMS pays tribute to and presents the artist with the UMS Distinguished Artist Award, and hosts a dinner in the artist's honor. Proceeds from the evening benefit the UMS Education Program. Previous awardees are Van Cliburn (1996), Jessye Norman (1997), Garrick Ohlsson (1998), The Canadian Brass (1999), Isaac Stern (2000), Marcel Marceau (2001), and Marilyn Horne (2002).

Kenneth C. Fischer, Host

Kenneth C. Fischer is the President of the University Musical Society (UMS). Before assuming his present position at UMS in



1987, Mr. Fischer was a management consultant, independent concert presenter, and association executive in Washington, DC. Mr. Fischer is a board member of

Interlochen Center for the Arts, Association of Performing Arts Presenters, and Arts Midwest. He is also active with Rotary, United Negro College Fund, and Classical Action/Performing Arts Against AIDS.

Mr. Fischer grew up in nearby Plymouth, attended the Interlochen Arts Camp, and has degrees from The College of Wooster in Ohio and the University of Michigan. He is married to flutist Penelope Peterson Fischer. They have one son, Matthew, living in San Francisco.

Sandra E. Ulsh is president of Ford Motor Company Fund effective November 1, 2000. Ford Motor Company Fund, with contributions exceeding \$100 million in 2001, concentrates on education, environment, and



building better communities and a better quality of life in the places where Ford does business. Prior to assuming this position, she was the director, Public Policy, Governmental Affairs.

Ms. Ulsh worked for three years at American Bank and Trust before joining

Ford as an economic analyst in 1978. She has held numerous finance positions including vehicle pricing, vehicle program finance manager, manager of business analysis and business plans for Truck Operations, and manager of Investor Relations.

Ms. Ulsh joined Governmental Affairs in 1996 as a strategic issues associate in the Corporate Economics and Strategies Issues office, and later became a legislative manager on Healthcare and Financial Service matters in Washington, DC.

She received a Bachelor's degree in Mathematics and Economics from Gettysburg College and an MBA from Lehigh University.

In August 2002, the University of Michigan welcomed the distinguished scientist **Mary Sue Coleman** as the 13th President of the University of Michigan.

As a biochemist, President Coleman built an outstanding research career through her research on the immune system and malignancies. She authored numerous articles on her findings and directed funded research projects supported by a variety of federal agencies.

In her scientific career, she served for 19 years as a member of the biochemistry faculty and as a Cancer Center administrator at the University of Kentucky in Lexington.

Her administrative work in the sciences led naturally to an appointment as associate provost and dean of research, then as vice-chancellor for graduate studies and research at the University of North Carolina at Chapel Hill (1990–1993). From there, she moved to the position of provost and vice president for academic affairs at the University of New Mexico (1993–1995).

In 1995, Mary Sue Coleman was appointed as the president of the University of Iowa, where she served with distinction for seven years.

She assumed the position of president of the University of Michigan on August 1, 2002, and also holds appointments as professor of biological chemistry in the School of Medicine and professor of chemistry in the College of Literature, Science, and the Arts.

Elected to the Institute of Medicine in 1997, she is also a Fellow of the American Association for the Advancement of Science and of the American Academy of Arts and Sciences. She currently chairs one of the major policy studies of the Institute of Medicine: the Committee on the Consequences of Uninsurance.

Her extensive leadership positions in higher education include service on the executive committee of the Association of American Universities, on the board

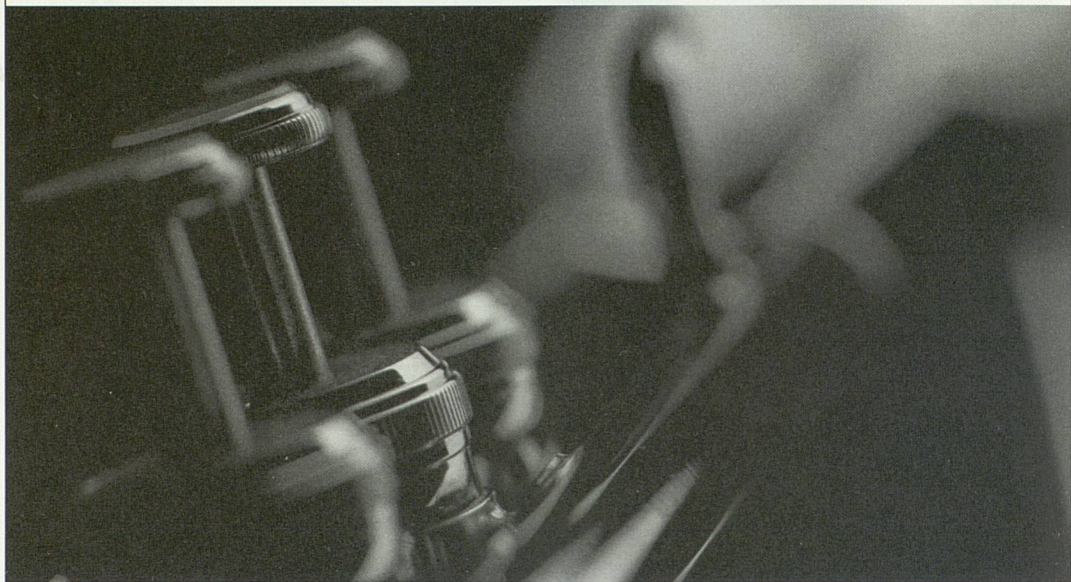


of directors of the American Council on Education, on the board of directors of the National Collegiate Athletic Association and as a member of the Knight Commission on Intercollegiate Athletics.

President Coleman earned her undergraduate degree in chemistry from Grinnell College, where she currently serves as a trustee of the college. Her doctorate in biochemistry was awarded by the University of North Carolina. Additionally, she undertook postdoctoral work at North Carolina and at the University of Texas at Austin.

Mary Sue Coleman is married to Kenneth Coleman, a well-known political scientist whose academic career has focused on issues in Latin America. Their son, Jonathan, lives with his wife Amee in Denver, Colorado, where he is a portfolio manager for the Janus Corporation.

**The perfect blend of skill,
talent and collaboration.**



At Key, we're proud to support the University Musical Society. And we're proud to pool our skills to bring you financial services that support your talents.



1.800.KEY2YOU®
Key.com

Achieve anything.

Key.com is a federally registered service mark of KeyCorp.

Committees & Donors

Honorary Co-Chairs

President Mary Sue Coleman and Dr. Kenneth M. Coleman
University of Michigan

John M. and Marilyn A. Rintamaki
Chief of Staff, Ford Motor Company

The Ford Honors Program is made possible by Ford Motor Company.

Gala Committee Co-Chairs

Sally Stegeman DiCarlo and Larry DiCarlo
Ingrid Merikoski and Sam Gregg

BRAVISSIMO

Ford Motor Company
Forest Health Services
Mrs. Robert E. Meredith

OVATION

DTE Energy
MASCO

MAESTRO

Kathy Benton and Robert Brown
Katharine and Jon Cosovich
Steve and Lori Director
David and Jo-Anna Featherman
Sylvia and Richard Kaufman
THE MOSAIC FOUNDATION
(of R. and P. Heydon)
Gilbert Omenn and
Martha Darling
Prudence and
Amnon Rosenthal
Maya Savarino
Herbert Sloan
Lois and Jack Stegeman
Sally Stegeman DiCarlo and
Larry DiCarlo

VIRTUOSO

Dr. and Mrs.
Ronald Bogdasarian
Norman and Debbie Herbert
Stephanie and Richard Lord
Paul and Ruth McCracken

PRINCIPAL

Bernard and Raquel Agranoff
Herb and Carol Amster
Emily W. Bandera, M.D.
Dale and Nancy Briggs
Edwin and Judith Carlson
Ken and Penny Fischer
Ray and Patricia Fitzgerald
Robert and Gloria Kerry
Dr. Daniel Little and
Dr. Bernadette Lintz

Judy and Roger Maugh
Susan McClanahan and
William Zimmerman
M. Haskell and
Jan Barney Newman
Marysia Ostafin and
George Smillie
Philip and Kathleen Power
John and Dot Reed
John Romani and
Barbara Anderson
James and Adrienne Rudolph
Richard Shackson
Loretta Skewes
Mrs. Frances V. Viola III
Willes and Kathy Weber
Marina and Robert Whitman

NOT JUST GUITARS

**L
E
S
S
O
N
S**



**SINCE
1962**

**HERB
DAVID
GUITAR
STUDIO**

302 East Liberty
Ann Arbor

**R
E
P
A
I
R
S**

**HUNDREDS OF
INSTRUMENTS
(734)665-8001**

BOOKS & ACCESSORIES

**We support the arts
with more than just applause.**

The arts and cultural opportunities so vital to this community are also important to us. That's why Comerica supports the arts. And we applaud those who join us in making investments that enrich peoples lives. Success — for an individual, a company, or a community — means little if it's not shared with others. Comerica is proud to support the success of the communities we serve.

Comerica

We listen. We understand. We make it work.®

Comerica Bank. Member FDIC. Equal Opportunity Lender.

www.comerica.com

University Musical Society

of the University of Michigan

UMS BOARD OF DIRECTORS

Prudence L. Rosenthal,
Chair

Clayton Wilhite,
Vice-Chair

Jan Barney Newman,
Secretary

Erik H. Serr, *Treasurer*

Michael C. Allemang
Janice Stevens Botsford
William M. Broucek

Kathleen G. Charla
Mary Sue Coleman

Jill A. Corr

Hal Davis

Sally Stegeman DiCarlo

Aaron P. Dworkin

David Featherman

Beverly B. Geltner

Debbie Herbert

Carl Herstein

Toni Hoover

Alice Davis Irani

Gloria James Kerry

Helen B. Love

Barbara Meadows

Lester P. Monts

Alberto Nacif

Jan Barney Newman

Gilbert S. Omenn

Randall Pittman

Philip H. Power

Rossi Ray-Taylor

Doug Rothwell

Judy Dow Rumelhart

Maya Savarino

Timothy P. Slottow

Peter Sparling

James C. Stanley

B. Joseph White

Clayton Wilhite

Karen Wolff

ADVISORY COMMITTEE

Louise Townley, *Chair*
Raquel Agranoff,

Vice Chair

Morrine Maltzman,
Secretary

Jeri Sawall, *Treasurer*

Barbara Bach

Paulett M. Banks

Milli Baranowski

Lois Baru

Judi Batay-Csorba

Kathleen Benton

Mimi Bogdasarian

Jennifer Boyce

Mary Breakey

Jeannine Buchanan

Victoria Buckler

Laura Caplan

Cheryl Cassidy

Elly Rose Cooper

Nita Cox

Norma Davis

Sally Stegeman

DiCarlo

Lori Director

Michael Endres

Nancy Ferrario

Sara B. Frank

Anne Glendon

Alvia Golden

Kathy Hentschel

Anne Kloack

Beth LaVoie

Stephanie Lord

Judy Mac

Esther Martin

Mary Matthews

Ingrid Merikoski

Jeanne Merlanti

Candice Mitchell

Bob Morris

Bonnie Paxton

Danica Peterson

Wendy Ransom

Swanna Saltiel

Penny Schreiber

Sue Schroeder

Aliza Shevrin

Loretta Skewes

Maryanne Telese

Dody Viola

Wendy Woods

UMS TEACHER ADVISORY COMMITTEE

Fran Ampey

Lori Atwood

Robin Bailey

Kathleen Baxter

Joe Batts

Elaine Bennett

Lynda Berg

Gail Bohner

Ann Marie Borders

David Borgsdorf

Sigrid Bower

Susan Buchan

Diana Clarke

Hayes Dabney

Wendy Day

Susan Filipiak

Jennifer Ginther

Brenda Gluth

Barb Grabbe

Pamela Graff

Nan Griffith

Joan Grissing

Lynn Gulick

Carroll Hart

Barbara Harte

Bill Hayes

Victoria Holley-Foster

Sandy Hooker

Susan Hoover

Silka Joseph

Jeff Kass

Rosalie Koenig

Sue Kohfeldt

Laura Machida

Ken McGraw

Patty Meador

Sylvia Meloche

Eunice Moore

Don Packard

Susan Pollans

Ben Pruitt

Wendy Raymond

Katie Ryan

Kathy Schmidt

Julie Taylor

Sandy Trosien

Barbara Wallgren

Education and Audience Development Program

Striving to provide world-class educational events and cultural exchange to the broadest definition of the community, the UMS Education and Audience Development Program continued its progressive growth and mission in many areas during the 02/03 season. Through a wide variety of partnerships and collaborations with individuals and community organizations, UMS was able to expand its commitment to audiences through a multitude of activities designed for different ages, nationalities, and learning styles. UMS recognizes that every single person has a unique relationship to the arts, and our role is to enhance that connection through dialogue and participation. In the past season alone, UMS was able to offer over 180 events to over 35,000 people as part of the Education and Audience Development program.

Brighton's Spencer Road Elementary enjoys Tamango's Urban Tap Youth Performance.



Youth, Teen, and Family Education

A unique program developed in partnership with the Ann Arbor Public Schools and the Washtenaw Intermediate School district, the Youth, Teen, and Family Education program provides world-class artistic experiences and professional development to students, young adults, teachers and families. Over 42 events serving nearly 13,000 people were planned in the 02/03 season.

K-12 Youth Performance Series

UMS's acclaimed one-hour series of specially designed in-theater performances for students offered six Youth Performances this season, allowing nearly 12,000 students to attend this series. Over 90 schools from 22 districts participated in UMS's Youth Performance Series.

UMS Teacher Workshop Series

UMS is part of the Kennedy Center Partners in Education Program, and offers our community world-class Kennedy Center workshop leaders, as well as workshops designed by local arts experts. Over 160 teachers attended UMS's teacher workshops this past season.

UMS Curriculum Packets

UMS creates specially designed teacher curriculum packets, audiotapes, and videotapes for all of the schools participating in our diverse program. These guides have garnered national attention and are used throughout the performing arts industry.

UMS K-12 School Enrichment

UMS has expanded our effort in in-school enhancement by providing additional support to the classroom teacher with trained arts professionals to teach students more effectively. Over the course of last year, UMS has facilitated over 60 of these classroom visits, affecting nearly 1,500 students.



Hubbard Street Dance Chicago leads a master class to the general public at Dance Gallery.

UMS Family Series

UMS is committed to world-class family events, with over 1,500 people attending our specially designed series of family events.

First Acts Program

Nearly 700 high school students were able to attend UMS public performances through this unique program that provides reduced priced tickets and free bussing to performances.

Adult and Community Education

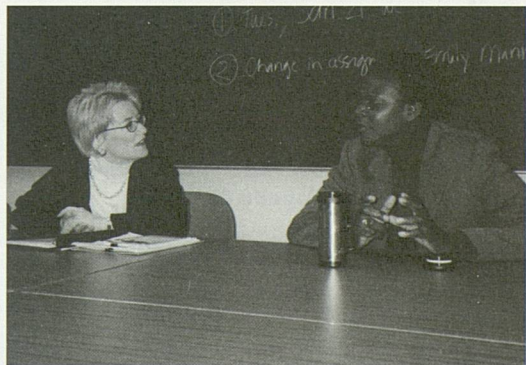
UMS tries to serve its adult and university population in many different and unique ways. UMS strongly emphasizes the importance of partnering with community organizations in the development of our programs. Throughout the past season, UMS partnered with over 100 individuals, community organizations and university units to plan for over 140 events. Nearly all events were free and open to the public.

Artist Residencies

The artists hold a special place at UMS, and last season was no exception. UMS facilitated many residency activities with artists, with over 80 educational events planned during the Royal Shakespeare Company Residency serving nearly 8,000 people. UMS managed major residencies with the Abbey Theater of Ireland, the 02/03 Brazil Series, the Bolshoi Ballet, Sekou Sundiata, the Royal Shakespeare Company, and Evening at the Apollo.

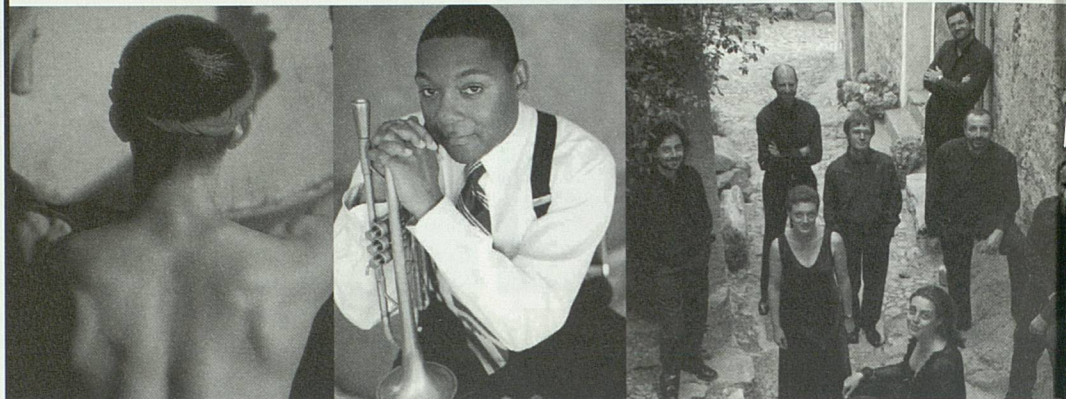
Community Programs

UMS continued to provide a wide range of educational events that would appeal to the widest variety of community members. UMS held 13 master classes, eight public interviews, 15 classroom visits, 23 lectures, five panel discussions, 11 workshops, 10 study clubs, and 57 other events including exhibits, films, and receptions. Nearly 12,000 people participated in UMS's educational exchanges.



Sekou Sundiata (r) speaking with Leslie Stainton at the Residential College.

ums season



U Theatre
Drummers of Taiwan
The Sound of Ocean

St. Petersburg String Quartet

**Kirov Orchestra of the
Mariinsky Theatre**
Valery Gergiev conductor

La Venexiana

Wynton Marsalis Septet

Miami City Ballet
Edward Villella artistic director

Vadim Repin violin

Pushkin's Boris Godunov

Suzanne Farrell Ballet

**St. Petersburg Academic
Capella Choir**

Chava Alberstein

**Doudou N'Diaye Rose
and Les Rosettes**

Charles Lloyd Quintet

Shakespeare's Globe Theatre
Shakespeare's Twelfth Night

Boston Pops
Keith Lockhart conductor

Handel's Messiah

Hill Auditorium
Re-Opening Concert

**Orchestre Révolutionnaire
et Romantique**
John Eliot Gardiner conductor

Jazz Divas Summit
Dianne Reeves, Dee Dee Bridgewater
and Regina Carter

Emerson String Quartet

Simon Shaheen and Qantara

Series Packages on Sale Now!

Renewal forms and brochures will be mailed on May 15.



*UMS would like to express its deepest appreciation to
Herb David and the Herb David Guitar Studio and students
for their special contribution to the 2002/2003 UMS season.*

Mary Lou Roberts, *Music Director*

Jessie Benaglio

Laura Cameron

Christian Chagas

Ari Goldstein

Greg Johnson

Kristine Kuhl

Paco Leon

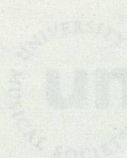
Ben Lougheed

Max McIlroy

Cory Roberts

Noah Winchell

Lorenzo Zamperla



Subscribe!

734.764.2538 www.ums.org

enter the 14 area code and call area 2538



we have space for
your subscription

03/04



Hilary Hahn violin

Canadian Brass

Children of Uganda

Cecilia Bartoli mezzo-soprano
**Orchestra of the
Age of Enlightenment**

Guthrie Theater:
Shakespeare's *Othello*

**Merce Cunningham
Dance Company**

Kronos Quartet

Ornette Coleman Trio

Israel Philharmonic
Yoel Levi conductor
Lynn Harrell cello

Takács Quartet

The Tallis Scholars

**Jazz at Lincoln Center's
Afro-Latin Jazz Orchestra**

Lang Lang piano

Lyon Opera Ballet and
Philippe Decouflé

**William Bolcom's *Songs of
Innocence and Experience***

Alfred Brendel piano

Girls Choir of Harlem

Senegalese Dance Party featuring
Orchestra Baobab

Shoghaken Ensemble

Karita Mattila soprano

Rossetti String Quartet and
Jean-Yves Thibaudet piano

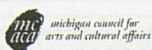
Caetano Veloso

UNIVERSITY
ums
MUSICAL SOCIETY

Subscribe!

734.764.2538 www.ums.org

outside the 734 area code, call toll-free 800.221.1229





the forward group

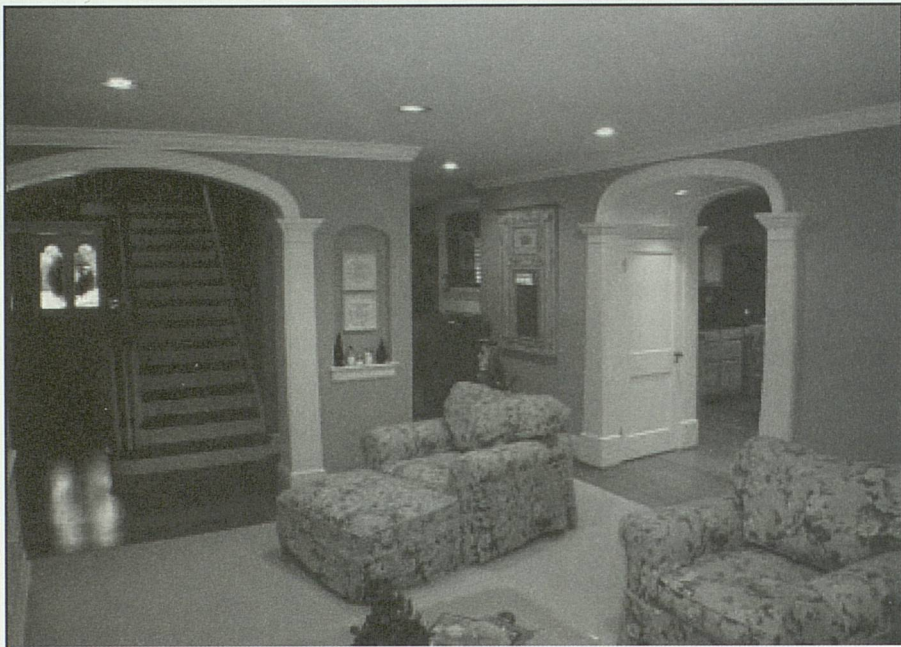
CUSTOM DESIGN BUILD REMODEL

734.761.8403

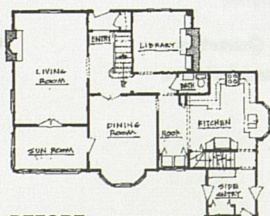
Architects and Builders...

Composing and Orchestrating

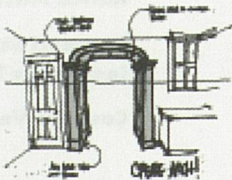
HARMONY in your Home



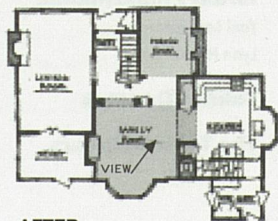
In this 1930's Cape Cod, featuring a typical room by room layout, our challenge was to open the floor plan and create a distinctive character. To open the floor plan, we moved load bearing walls, relocated the bathroom, and redesigned the existing hallway. To achieve a distinctive character, we introduced a series of archways with tapered columns and crown capitals framing an elliptical cased arch. The archways provide a visual focal point and also conceal utilitarian spaces. The customers were delighted.



BEFORE



CONCEPT



AFTER

Congratulations to the Ford Honors Program!

Support for the University Musical Society

This performance — and all of UMS's nationally recognized artistic and educational programs — would not be possible without the generous support of the community. UMS gratefully acknowledges the following individuals, businesses, foundations and government agencies — and those who wish to remain anonymous — and extends its deepest gratitude for their support.

This list includes current donors as of April 3, 2003. Every effort has been made to ensure its accuracy. Please call 734.647.1178 with any errors or omissions.

SOLOISTS \$25,000 or more

Mrs. Gardner Ackley

Estate of

Frederick N. McOmber
Randall and Mary Pittman
Philip and Kathleen Power

MAESTROS \$10,000-24,999

Carl and Isabelle Brauer
Ronnie and Sheila Cresswell
Robert and Pearson Macek
Mrs. Robert E. Meredith
Prudence and
Amnon Rosenthal

VIRTUOSI \$7,500-9,999

Maurice and Linda Binkow
Edward and Natalie Surovell

CONCERTMASTERS

\$5,000-7,499

Herb and Carol Amster
Douglas D. Crary
David and Phyllis Herzig
Dr. Toni Hoover
Doug and Gay Lane
Paul and Ruth McCracken
Charlotte McGeoch
Charles H. Nave
Gilbert Omenn and
Martha Darling
Loretta M. Skewes
Lois A. Theis
Marina and Robert Whitman
Ann and Clayton Wilhite

PRODUCERS \$3,500-4,999

Michael Allemang
Essel and Menakka Bailey
Mr. and Mrs. George W. Ford
Michael and Sara Frank
Beverley and Gerson Geltner
Betty-Ann and
Daniel Gilliland
Debbie and Norman Herbert
Carl and Charlene Herstein
Shirley Y. and
Thomas E. Kauper
Lois and Jack Stegeman
Marion T. Wirick and
James N. Morgan

LEADERS \$2,500-3,499

Bob and Martha Ause
Bradford and Lydia Bates
Kathy Benton and
Robert Brown
Raymond and
Janet Bernreuter
Barbara Everitt Bryant
Edward and Mary Cady
Thomas and Marilou Capo
Dave and Pat Clyde
Maurice and Margo Cohen
Katharine and Jon Cosovich
Mr. Michael J. and
Dr. Joan Crawford
Jack and Alice Dobson
Jim and Patsy Donahey
Mr. and Mrs.
Thomas C. Evans
Ken and Penny Fischer
Ilene H. Forsyth

Sue and Carl Gingles
Linda and Richard Greene
Janet Woods Hoobler
John and Patricia Huntington
David and Sally Kennedy
Robert and Gloria Kerry
Henry Martin and
Paula Lederman
Marc and Jill Lippman
Judy and Roger Maugh
Susan McClanahan and
Bill Zimmerman
Neil and Suzanne McGinn
Mrs. Charles Overberger
(Betty)
Jim and Bonnie Reece
John and Dot Reed
Don and
Judy Dow Rumelhart
Steve and Cynny Spencer
James and Nancy Stanley
Don and Carol Van Curler
Mrs. Francis V. Viola III
Don and Toni Walker
B. Joseph and Mary White



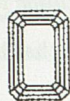
Diamonds For Less!



Round



Pear



Emerald



Marquise



Oval

- ◆ Over 80 years in the diamond business
- ◆ One of the largest diamond selections in Michigan
- ◆ G.I.A. graded diamonds
- ◆ Certificate diamonds
- ◆ The lowest prices
- ◆ Every size, shape, cut, color and quality
- ◆ A large selection of settings and mountings
- ◆ Custom designing
- ◆ Appraisals and photographs by a graduate gemologist from the Gemological Institute of America

2000 W. Stadium Blvd., Ann Arbor
(734) 994-5111

HOURS: 9:30-5:30 ◆ Thur 9:30-8:30 ◆ Sat 9:30-5:00

Family Owned and Operated Since 1921 ◆ www.lewisjewelers.com

PRINCIPALS \$1,000-2,499

Dr. and Mrs. Gerald Abrams
Jim and Barbara Adams
Bernard and Raquel Agranoff
Suzan and Michael Alexander
Jonathan W. T. Ayers
Lesli and Christopher Ballard
Emily W. Bandera, M.D.
Dr. and Mrs. Robert Bartlett
Drs. Astrid Beck and
David Noel Freedman
Ralph P. Beebe
Patrick and Maureen Belden
Harry and Betty Benford
Ruth Ann and
Stuart J. Bergstein
L. S. Berlin
Suzanne A. and
Frederick J. Beutler
Joan Akers Binkow
Dr. and
Mrs. Ronald Bogdasarian

Elizabeth and Giles G. Bole
Howard and Margaret Bond
Sue and Bob Bonfield
Charles and Linda Borgsdorf
Laurence and Grace Boxer
Dale and Nancy Briggs
Virginia Sory Brown
William and Sandra Broucek
Jeannine and
Robert Buchanan
Robert and Victoria Buckler
Lawrence and Valerie Bullen
Mr. and Mrs.
Richard J. Burstein
Letitia J. Byrd
Barbara and Albert Cain
Michael and
Patricia Campbell
Jean and Kenneth Casey
Janet and Bill Cassebaum
Anne Chase
James S. Chen

Don and Betts Chisholm
Mr. and Mrs.
John Alden Clark
Leon and Heidi Cohan
Hubert and Ellen Cohen
Carolyn and
L. Thomas Conlin
Anne and Howard Cooper
Paul N. Courant and
Marta A. Manildi
Malcolm and Juanita Cox
George and Connie Cress
Kathleen Crispell and
Thomas Porter
Roderick and
Mary Ann Daane
Peter and Susan Darrow
Hal and Ann Davis
Pauline and Jay J. De Lay
Lloyd and Genie Dethloff
Lorenzo DiCarlo and
Sally Stegeman DiCarlo

- Steve and Lori Director
 Molly and Bill Dobson
 Al Dodds
 Elizabeth A. Doman
 Dr. and
 Mrs. Theodore E. Dushane
 Martin and Rosalie Edwards
 Leonard and Madeline Eron
 Bob and Chris Euritt
 Eric Fearon and Kathy Cho
 David and
 Jo-Anna Featherman
 Yi-tsi M. and
 Albert Feuerwerker
 Bob and Sally Fleming
 John and Esther Floyd
 James and Anne Ford
 Otto and Lourdes E. Gago
 Marilyn G. Gallatin
 Bernard and Enid Galler
 Marilyn Tsao and Steve Gao
 William and Ruth Gilkey
 Drs. Sid Gilman and
 Carol Barbour
 Paul and Anne Glendon
 Alvia G. Golden and
 Carroll Smith-Rosenberg
 Susan Smith Gray and
 Robert Gray
 Elizabeth Needham Graham
 Jeffrey B. Green
 Frances Greer
 John and Helen Griffith
 Leslie and
 Mary Ellen Guinn
 Mrs. W.A. Hiltner
 Julian and Diane Hoff
 Robert M. and Joan F. Howe
 Dr. H. David and
 Dolores Humes
 Ann D. Hungerman
 Susan and Martin Hurwitz
 Keki and Alice Irani
 Stuart and Maureen Isaac
 Wallie and Janet Jeffries
 Timothy and
 Jo Wiese Johnson
- Robert L. and
 Beatrice H. Kahn
 Herbert Katz
 Richard and Sylvia Kaufman
 Connie and Tom Kinnear
 Diane Kirkpatrick
 Philip and
 Kathryn Klintworth
 Carolyn and Jim Knake
 Victoria F. Kohl and
 Thomas Tecco
 Michael and
 Phyllis Korybalski
 Samuel and Marilyn Krimm
 Amy Sheon and
 Marvin Krislov
 Bud and Justine Kulka
 Barbara and
 Michael Kusisto
 Jill M. Latta and
 David S. Bach
 Ted and Wendy Lawrence
 Laurie and Robert LaZebnik
 Peter Lee and Clara Hwang
 Leo and Kathy Legatski
 Mr. and
 Mrs. Fernando S. Leon
 Carolyn and Paul Lichter
 Evie and Allen Lichter
 Lawrence and Rebecca Lohr
 Leslie and Susan Loomans
 Richard and Stephanie Lord
 John and Cheryl MacKrell
 Catherine and
 Edwin L. Marcus
 Sally and Bill Martin
 Natalie Matovinovic
 Chandler and Mary Matthews
 Ernest and Adele McCarus
 Joseph McCune and
 Georgiana Sanders
 Ted and Barbara Meadows
 Andy and Candice Mitchell
 Therese M. Molloy
 Lester and Jeanne Monts
 Grant W. Moore
 Melinda and Bob Morris
- Julia S. Morris
 Brian and Jacqueline Morton
 Cruse W. and
 Virginia Patton Moss
 Eva L. Mueller
 Martin Neuliep and
 Patricia Pancioli
 M. Haskell and
 Jan Barney Newman
 Eulalie Nohrden
 Marylen and
 Harold Oberman
 Robert and Elizabeth Oneal
 Mrs. William B. Palmer
 William C. Parkinson
 Dory and John D. Paul
 Margaret and Jack Petersen
 Elaine and Bertram Pitt
 Eleanor and Peter Pollack
 Donald H. Regan and
 Elizabeth Axelson
 Ray and Ginny Reilly
 Bernard E. and
 Sandra Reisman
 Kenneth J. Robinson
 Barbara A. Anderson and
 John H. Romani
 Mr. and Mrs. Irving Rose
 Doug and Sharon Rothwell
 Dr. Nathaniel H. Rowe
 Craig and Jan Ruff
 Alan and Swanna Saltiel
 Dick and Norma Sarns
 Maya Savarino
 Meeyung and
 Charles R. Schmitter
 Mrs. Richard C. Schneider
 Rosalie and
 David Schottenfeld
 Steve and Jill Schwartz
 John J. H. Schwarz
 Erik and Carol Serr
 Helen and George Siedel
 Herbert Sloan
 Donald C. and Jean M. Smith
 Susan M. Smith
 Carol and Irving Smokler

goodbye cold, HELLO COMEDY!



**a new comedy by
Randall Godwin**

Directed by
Michelle Mountain

With wit and compassion, this
WORLD PREMIERE
production irreverently lampoons
bumbling doctors, relentless media
sensationalism, judicial indifference
and everything in between.

Through the search for the
larger-than-life canine hero, Corky,
radio journalist Brian Blessing
discovers that true happiness
comes from a simple leap of faith.

Featuring Ryan Carlson,
Teri L. Clark, Tobin Hissong,
Bess Miller, Kate Peckham,
Jim Porterfield, and
Elizabeth Ann Townsend.

April 3 - May 31

With Underwriting Support From
THE MOSAIC FOUNDATION
(of Rita & Peter Heydon) based in Ann Arbor



**an improbable farce by
Noel Coward**


Directed by Guy Sanville

In the tradition of last season's
Born Yesterday, this laugh-out-loud
classic comedy will delight
audiences of all ages!

This production will take you on
a wacky romp through
this world and into the next as
Charles Condomine discovers the
dangers of dabbling in the occult
when his first wife hatches
a ghostly plot that leads to murder.

Featuring Sandra Birch,
Randall Godwin, Terry Heck,
Janet Maylie, Michelle Mountain,
Kate Peckham, and Malcolm Tulip.

June 19 - August 30

Generously sponsored by 
MARSHALL FIELD'S
PRAGUE



CALL (734) 433-ROSE (7673)
FOR DETAILS AND TICKET INFORMATION

Principals, con't.

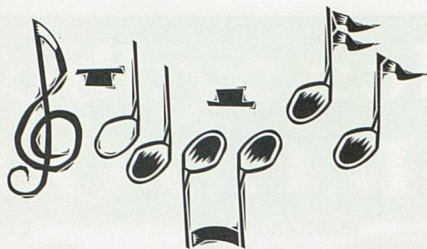
Curt and Gus Stager
 David and Ann Staiger
 Michael and
 Jeannette Bittar Stern
 Victor and Marlene Stoeffler
 Prof. Louis J. and
 Glennis M. Stout
 Charlotte B. Sundelson
 Bob and Betsy Teeter
 Jan and Nub Turner
 Dr. Sheryl S. Ulin and
 Dr. Lynn T. Schachinger
 Susan B. Ullrich
 Joyce A. Urba and
 David J. Kinsella
 Elly Wagner
 Florence S. Wagner
 Willes and Kathleen Weber
 Karl and Karen Weick
 Robert O. and
 Darragh H. Weisman
 Angela and Lyndon Welch
 Marcy and Scott Westerman
 Roy and JoAn Wetzel
 Harry C. White and
 Esther R. Redmount
 Iris and Fred Whitehouse
 Max Wicha and
 Sheila Crowley
 Phyllis B. Wright
 Paul Yhouse
 Ed and Signe Young
 Gerald B. and
 Mary Kay Zelenock

BENEFACTORS \$500-999

Thomas and Joann Adler
 Family Foundation
 Michael and Marilyn Agin
 Dr. and Mrs. Robert G. Aldrich
 Anastasios Alexiou
 Christine Webb Alvey
 Dr. and
 Mrs. David G. Anderson
 Dr. and Mrs. Rudi Ansbacher
 Janet and Arnold Aronoff
 Norman E. Barnett

Mason and Helen Barr
 Dr. Wolfgang and
 Eva Bernhard
 Philip C. Berry
 John Blankley and
 Maureen Foley
 Tom and Cathie Bloem
 Mr. and Mrs. Richard Boyce
 David and Sharon Brooks
 Morton B. and Raya Brown
 Sue and Noel Buckner
 Trudy and Jonathan Bulkley
 Dr. Frances E. Bull
 Bruce and Jean Carlson
 Edwin and Judith Carlson
 Marshall and Janice Carr
 Carolyn M. Carty and
 Thomas H. Haug
 Tsun and Siu Ying Chang
 Janice A. Clark
 Ralph Conger
 Nan and Bill Conlin
 Jim and Connie Cook
 Jane Wilson Coon
 Susan and Arnold Coran
 Marnee and John DeVine
 Macdonald and Carolin Dick
 Della DiPietro and
 Jack Wagoner, M.D.
 Jack and Betty Edman
 Patricia Enns
 Stefan S. and Ruth S. Fajans
 Dr. and Mrs. S.M. Farhat
 Claudine Farrand and
 Daniel Moerman
 Irene Fast
 Dr. and Mrs. John A. Faulkner
 Dede and Oscar Feldman
 Dr. and Mrs. James Ferrara
 Sidney and Jean Fine
 Carol Finerman
 John and Karen Fischer
 Ray and Patricia Fitzgerald
 Guillermo Flores
 Betsy Foxman and
 Michael Boehnke
 Dr. Ronald Freedman
 Drs. Steve Geiringer and
 Karen Bantel
 Thomas and Barbara Gelehrter

Rebecca Gepner and
 Michael Annis
 Beverly Gershowitz
 Richard and Cheryl Ginsburg
 Jack and Kathleen Glezen
 Cozette Grabb
 Mr. and Mrs. Robert C. Graham
 Dr. John and Renee M. Greden
 Dr. and Mrs. Lazar J. Greenfield
 Seymour D. Greenstone
 David and Kay Gugala
 Ken and Margaret Guire
 Don P. Haefner and
 Cynthia J. Stewart
 Mr. and Mrs. Elmer F. Hamel
 Martin D. and Connie D. Harris
 Robert and Jean Harris
 Clifford and Alice Hart
 Jeannine and Gary Hayden
 Henry R. and Lucia Heinold
 John H. and
 Maurita Peterson Holland
 Drs. Linda Samuelson and
 Joel Howell
 Eileen and Saul Hymans
 Jean Jacobson
 Rebecca S. Jahn
 Jim and Dale Jerome
 Emily Kennedy
 Dick and Pat King
 Dr. David E. and
 Heidi Castleman Klein
 Hermine R. Klingler
 Joseph and Marilyn Kokoszka
 Charles and Linda Koopmann
 Bert and Geraldine Kruse
 Lee and Teddi Landes
 Mr. John K. Lawrence
 Jacqueline H. Lewis
 E. Daniel and Kay Long
 Brigitte and Paul Maassen
 Jeff Mason and Janet Netz
 Griff and Pat McDonald
 Jeanette and Jack Miller
 Myrna and Newell Miller
 Cyril Moscow
 Edward C. Nelson
 Dr. and
 Mrs. Frederick C. O'Dell



**Enriching our community
through the arts.**



Bank OF ANN ARBOR

Downtown Ann Arbor (734) 662-1600 • Traver Village Shopping Center (734) 662-3800
Washtenaw Avenue (734) 822-1500 • Downtown Ypsilanti (734) 485-9400
Stadium & Liberty (734) 822-1900

Member
FDIC

www.bankofannarbor.com

*Let Us Help With
Your Seating Arrangements*

• Audi • Honda
• Porsche • Volkswagen

*Voted #1 Best Car Dealership
Seven Years In a Row
(97-03) by readers of
Current Magazine.*

(734) 761-3200

2575 S. State Street
Ann Arbor
www.howardcooper.com

**HOWARD
COOPER**

• Import Center •

Benefactors, con't.

Mitchel Osman, MD and
 Nancy Timmerman
 Marysia Ostafin and
 George Smillie
 Stephen and Bettina Pollock
 Richard and Mary Price
 Wallace and Barbara Prince
 Mrs. Gardner C. Quarton
 Mrs. Joseph S. Radom
 Jeanne Raisler and Jon Cohn
 Ms. Rossi Ray-Taylor
 Molly Resnik and John Martin
 H. Robert and Kristin Reynolds
 Jay and Machree Robinson
 James and Adrienne Rudolph
 Sue Schroeder
 Julianne and Michael Shea
 Howard and Aliza Shevrin
 George and Gladys Shirley
 Pat Shure
 Carl Simon and Bobbi Low
 Frances U. and Scott K. Simonds
 Robert and Elaine Sims
 Irma J. Sklenar
 Alene and Stephanie Smith
 Lloyd and Ted St. Antoine
 Gus and Andrea Stager
 James Steward and Jay Pekala
 Jeff Stoller
 Dr. and Mrs. Stanley Strasius
 Ellen and Geoffrey K. Stross
 Elizabeth H. Thieme
 Dr. and Mrs. Merlin C. Townley
 William C. Tyler
 Dr. and Mrs. Samuel C. Ursu
 Charlotte Van Curler
 Jack and Marilyn van der Velde
 Kate and Chris Vaughan
 Joyce L. Watson and
 Martin Warshaw
 Robin and Harvey Wax
 Dr. Steven W. Werns
 Brymer Williams
 Lawrence and Mary Wise
 Max and Mary Wisgerhof
 Karen and Jack Wolff
 David and April Wright
 Mayer and Joan Zald

ASSOCIATES \$250-499

Jesus and Benjamin Acosta-Hughes
 Robert Ainsworth
 Mr. and Mrs. Roy I. Albert
 Helen and David Aminoff
 David and Katie Andrea
 Harlene and Henry Appelman
 Jeff and Deborah Ash
 Mr. and Mrs. Arthur J. Ashe, III
 Dwight T. Ashley
 Dan and Monica Atkins
 Linda Bennett and Bob Bagramian
 Robert L. Baird
 Lisa and Jim Baker
 Reg and Pat Baker
 Barbara and Daniel Balbach
 Paulett Banks
 Ms. Ruth Bardenstein
 John R. Bareham
 David and Monika Barera
 Lois and David Baru
 Lourdes Bastos Hansen
 Tom and Judith Batay-Csorba
 Mrs. Jere M. Bauer
 Gary Beckman and Karla Taylor
 Professor and
 Mrs. Erling Blondal Bengtsson
 Dr. and Mrs. Ronald M. Benson
 Joan and Rodney Bentz
 James A. Bergman and
 Penelope Hommel
 Steven J. Bernstein
 Dan and Irene Biber
 Jack Billi and Sheryl Hirsch
 Donald and Roberta Blitz
 Roger and Polly Bookwalter
 Victoria C. Botek and
 William M. Edwards
 Dr. and Mrs. Ralph Bozell
 Paul and Anna Bradley
 Joel Bregman and Elaine Pomeranz
 June and Donald R. Brown
 Laurie Burns
 Susan and Oliver Cameron
 Valerie and Brent Carey
 Jim and Priscilla Carlson
 Jeannette and Robert Carr
 Dr. and Mrs. Joseph C. Cerny
 Thomas Champagne and
 Stephen Savage
 Dr. Kathleen G. Charla
 Dr. Kyung and Young Cho
 Kwang and Soon Cho
 Reginald and Beverly Ciokajlo
 Brian and Cheryl Clarkson
 Angela Clock

Harvey Colbert
 Wayne and Melinda Colquitt
 Hugh and Elly Cooper
 Clifford and Laura Craig
 Merle and Mary Ann Crawford
 Peter C. and Lindy M. Cubba
 Richard J. Cunningham
 Marcia A. Dalbey
 Sunil and Merial Das
 Dr. and Mrs. Charles W. Davenport
 Art and Lyn Powrie Davidge
 Ed and Ellie Davidson
 Norma and Peter Davis
 John and Jean Debbink
 Elena and Nicholas Delbanco
 Richard and Sue Dempsey
 Elizabeth Dexter
 Jack and Claudia Dixon
 Judy and Steve Dobson
 Heather and Stuart Dombey
 Thomas and Esther Donahue
 Cecilia and Allan Dreyfuss
 John Dryden and Diana Raimi
 Martin and Rosalie Edwards
 Charles and Julia Eisendrath
 Dr. Alan S. Eiser
 Judge and Mrs. S. J. Elden
 Ethel and Sheldon Ellis
 Mr. John W. Etsweiler, III
 Mark and Karen Falahee
 Elly and Harvey Falit
 John W. Farah DDS PhD
 Drs. Michael and Bonnie Fauman
 Phil and Phyllis Fellin
 Joseph and Nancy Ferrario
 Dr. James F. Filgas
 Susan Filipiak/
 Swing City Dance Studio
 Herschel Fink
 Gerald B. and Catherine L. Fischer
 C. Peter and Bev A. Fischer
 Mrs. Gerald J. Fischer (Beth B.)
 Jason I. Fox
 Paula L. Bockenstedt and
 David A. Fox
 Lynn A. Freeland
 Dr. Leon and Marcia Friedman
 Lela J. Fuester
 Mr. and Mrs. William Fulton
 Harriet and Daniel Fusfeld
 Thomas J. Garbaty
 Professor and Mrs. David M. Gates
 Chuck and Rita Gelman
 Deborah and Henry Gerst
 Elmer G. Gilbert and
 Lois M. Verbrugge

Radio doesn't get any better than this...

Classical music.

Reliable news from NPR.

Great weekend entertainment.

WGTE FM 91.3



Associates, con't.

Matthew & Debra Gildea
James and Janet Gilsdorf
Maureen and David Ginsburg
Irwin Goldstein and Martha Mayo
William and Sally Goshorn
Charles and Janet Goss
James W. and Marla J. Gousseff
Michael L. Gowing
Maryanna and

Dr. William H. Graves, III
Jerry M. and Mary K. Gray
Victoria Green and
Matthew Toshlog
Lila and Bob Green
Bill and Louise Gregory
Raymond and Daphne M. Grew
Mark and Susan Griffin
Werner H. Grillk
Bob and Jane Grover
Susan and John Halloran
Yoshiko Hamano
Tom Hammond
Grace H. Hanninen
David B. and Colleen M. Hanson
Robert and Sonia Harris
Paul Hysen and Jeanne Harrison

Paula B. Hencken and
George C. Collins
Rose and John Henderson
J. Lawrence and
Jacqueline Stearns Henkel
Dr. and Mrs. Keith S. Henley
Kathy and Rudi Hentschel
Louise Hodgson
Mr. and Mrs. William B. Holmes
Dr. Ronald and Ann Holz
John I. Hritz, Jr.
Jane H. Hughes
Jewel F Hunter
Marilyn C. Hunting
Thomas and Kathryn Huntzicker
Susan and Martin Hurwitz
Robert B. Ingling
Margaret and Eugene Ingram
Elizabeth Jahn
Paul and Olga Johnson
Ellen C. Johnson
Kent and Mary Johnson
Stephen Josephson and Sally Fink
Dr. and Mrs. Mark S. Kaminski
Arthur A. Kaselemas
Professor Martin E. Katz

Herbert and Jane M. Kaufer
James A. Kelly and
Mariam C. Noland
Frank and Patricia Kennedy
Mr. and Mrs. Roland Kibler
Donald F. and Mary A. Kiel
Mrs. Rhea K. Kish
Paul and Dana Kissner
Steve and Shira Klein
Anne Kloack
Michael J. Kondziolka and
Mathias-Philippe Rene Badin
Dr. and Mrs. Melvyn Korobkin
Bert and Geraldine Kruse
Bert and Catherine La Du
Mrs. David A. Lanian
Mr. and Mrs. Henry M. Lapeza
Neal and Anne Laurance
Beth and George LaVoie
David Lebenbom
Cyril and Ruth Leder
John and Theresa Lee
Frank Legacki and Alicia Torres/
Rosebud Solutions
Jim and Cathy Leonard
Sue Leong

- Carolyn Lepard
 Myron and Bobbie Levine
 Donald J. and Carolyn Dana Lewis
 Ken and Jane Lieberthal
 Rod and Robin Little
 Daniel Little and Bernadette Lintz
 Vi-Cheng and Hsi-Yen Liu
 Naomi E. Lohr
 Ronald Longhofer and
 Norma McKenna
 Mark and Jennifer LoPatin
 Charles and Judy Lucas
 Lawrence N. Lup, DDS
 Carl J. Lutkehaus
 Pamela J. MacKintosh
 Virginia Mahle
 Latika Mangrulkar
 Nancy and Philip Margolis
 Ann W. Martin and Russ Larson
 Jenifer Martin
 Carole Mayer
 Dr. and Mrs. Ben McCallister
 Margaret E. McCarthy
 Margaret and Harris McClamroch
 Michael G. McGuire
 Nancy A. and Robert E. Meader
 Gerlinda S. Melchiori Ph.D.
 Ingrid Merikoski
 Bernice and Herman Merte
 Henry D. Messer – Carl A. House
 Ms. Heidi Meyer
 Shirley and Bill Meyers
 Mr. and Mrs. Eugene Miller
 Edward and Barbara Mills
 Kathryn and Bertley Moberg
 Thomas Mobley
 William G. and Edith O. Moller, Jr.
 Alan and Sheila Morgan
 Jane and Kenneth Moriarty
 Gavin Eadie and Barbara Murphy
 Gerry and Joanne Navarre
 Frederick C. Neidhardt and
 Germaine Chipault
 James G. Nelson and
 Katherine M. Johnson
 Alexander Nelson
 Richard and Susan Nisbett
 Laura Nitzberg and Thomas Carli
 Arthur and Lynn Nusbaum
 Maury Okun and Tina Topalian
 Constance and David Osler
 William and Hedda Panzer
 Nicole Paoletti
 Karen Tyler Perry
 Joyce Phillips
 Mr. and Mrs. Frederick R. Pickard
 Wayne Pickvet and Bruce Barrett
 Roy and Winnifred Pierce
 Frank and Sharon Pignanelli
 Richard and Meryl Place
 Donald and Evonne Plantinga
 Bill and Diana Pratt
 Jerry and Lorna Prescott
 Larry and Ann Preuss
 Leland and Elizabeth Quackenbush
 Patricia Randle
 Jim and Ieva Rasmussen
 Anthony L. Reffells and
 Elaine A. Bennett
 Jack and Margaret Ricketts
 Constance O. Rinehart
 Kathleen Roelofs Roberts
 Mr. and Mrs. Stephen J. Rogers
 Robert and Joan Rosenblum
 Gay and George Rosenwald
 Mr. Haskell Rothstein
 Sally Rutzky
 Ina and Terry Sandalow
 Miriam Sandweiss
 John and Reda Santinga
 Michael and Kimm Sarosi
 Mike Savitski
 Dr. Stephen J. and Kim R. Saxe
 Frank J. Schauerte
 Richard Black and
 Christine Schesky-Black
 Mary A. Schieve
 David and Marcia Schmidt
 Jean Scholl
 David E. and Monica N. Schteingart
 Richard A. Seid
 Mrs. Harriet Selin
 Judith and Ivan Sherick
 Jean and Thomas Shope
 Hollis and Martha A. Showalter
 Scott and Joan Singer
 John and Anne Griffin Sloan
 Tim and Marie Slottow
 Carl and Jari Smith
 Mrs. Robert W. Smith
 Dr. Elaine R. Soller
 Arthur and Elizabeth Solomon
 Yoram and Eliana Sorokin
 Tom Sparks
 Peter Sparling and John Gutoskey
 Larry and Doris Sperling
 Jeffrey D. Spindler
 Allen and Mary Spivey
 Judy and Paul Spradlin
 Burnette Staebler
 Rick and Lia Stevens
 Ellen M. Strand and Dennis C. Regan
 Donald and Barbara Sugerman
 Brian and Lee Talbot
 Eva and Sam Taylor
 Stephan Taylor and Elizabeth Stumbo
 Anna Taylor
 James L. and Ann S. Telfer
 Paul and Jane Thielking
 Edwin J. Thomas
 Bette M. Thompson
 Nigel and Jane Thompson
 Dr. and Mrs. Robert F. Todd
 Jim Toy
 Joan Lowenstein and
 Jonathan Trobe
 Bill and Jewell Tustian
 Mr. James R. Van Bochove
 Michael L. Van Tassel
 Hugo and Karla Vandersypen
 Wendy L. Wahl and William R. Lee
 Bruce and Raven Wallace
 Charles R. and
 Barbara H. Wallgren
 Carol Weber
 Deborah Webster and
 George Miller
 Lawrence A. Weis
 Susan and Peter Westerman
 Leslie Clare Whitfield
 Professor Steven Whiting
 Nancy Wiernik
 Reverend Francis E. Williams
 Thomas and Iva Wilson
 Lois Wilson-Crabtree
 Beverly and Hadley Wine
 Charles Witke and Aileen Gatten
 Charlotte A. Wolfe
 J. D. and Joyce Woods
 Al and Alma Wooll
 Frances A. Wright
 Don and Charlotte Wyche
 Richard Yarmain
 MaryGrace and Tom York

CORPORATE FUND**\$100,000 and above**

Ford Motor Company
Forest Health Services Corporation
University of Michigan
Pfizer Global Research and Development: Ann Arbor Laboratories

\$20,000-\$49,999

Borders Group, Inc.
DaimlerChrysler Corporation Fund
Office of the Senior Vice Provost for Academic Affairs
TIAA-CREF

\$10,000-\$19,999

Bank of Ann Arbor
Bank One
Brauer Investment Company
CFI Group
DTE Energy Foundation
KeyBank
McDonald Investments
McKinley Associates
Sesi Lincoln Mercury Volvo Mazda
Thomas B. McMullen Company

\$5,000-\$9,999

Ann Arbor Automotive
Butzel Long Attorneys
Comerica Incorporated
Dennis Dahlmann Inc.
Edward Surovell Realtors
Elastizell Corporation of America
Learning Express-Michigan
MASCO Charitable Trust
Miller Canfield Paddock and Stone P.L.C.
National City Bank
TCF Bank

\$1,000-\$4,999

Alf Studios
Blue Nile
Café Marie
Chase Manhattan Mortgage
Comcast
Holcim (US) Inc.
Joseph Curtin Studios
Lewis Jewelers
ProQuest
Republic Bank
United Bank & Trust

\$100-\$999

Ayse's Courtyard Café
Ann Arbor Builders
Ann Arbor Commerce Bank
Bed & Breakfast on Campus
BKR Dupuis & Ryden, P.C.
Burns Park Consulting
Cemex Inc.
Clark Professional Pharmacy
Coffee Express
Dr. Diane Marie Agresta
Edward Brothers, Inc.
Fleishman Hillard Inc.
Galamp Corporation
Garris, Garris & Garris, P.C.
Guardian Industries
Malloy Incorporated
Michigan Critical Care Consultants
Quinn Evans/Architects
Rosebud Solutions
Seaway Financial
Agency/Wayne Milewski
Selo/Shevel Gallery
Swedish Women's Educational Association
Thalner Electronic Laboratories Inc.

FOUNDATION AND GOVERNMENT SUPPORT

UMS gratefully acknowledges the support of the following foundations and government agencies:

\$100,000 and above

Association of Performing Arts Presenters Arts Partners Program
Doris Duke Charitable Foundation
The Ford Foundation
JazzNet
Michigan Council for Arts and Cultural Affairs
The Power Foundation
Wallace-Reader's Digest Funds

\$50,000-99,999

Community Foundation for Southeastern Michigan
National Endowment for the Arts
The Whitney Fund

\$10,000-49,999

Elizabeth E. Kennedy Fund
New England Foundation for the Arts

\$1,000-9,999

Akers Foundation
Arts Midwest
Maxine and Stuart Frankel Foundation
Heartland Arts Fund
The Lebensfeld Foundation
Mid-America Arts Alliance
Molloy Foundation, Inc.
Montague Foundation
THE MOSAIC FOUNDATION (of R. and P. Heydon)

Sarns Ann Arbor Fund
Vibrant of Ann Arbor

\$100-999
Erb Foundation

TRIBUTE GIFTS

Contributions have been received in honor and/or memory of the following individuals.

T. Earl Douglass
Alice Kelsey Dunn
Beverley Geltner
Michael Gowing
Werner Grillk
Elizabeth Kennedy
Ted Kennedy Jr.
Dr. Gloria Kerry
Joyce Malm
Frederick C. Matthaei, Sr.
Diana Stone Peters
Pfizer
Philip and Kathleen Power
Gwen and Emerson Powrie
Ruth Putnam
Mrs. Gail Rector
Steffi Reiss
Eric H. Rothstein
Margaret E. Rothstein
Frances D. Sayed
Prof. Wolfgang Stolper
Francis V. Viola, M.D.
Horace Warren
Peter Holderness Woods
Elizabeth Yhouse

BURTON TOWER SOCIETY

The Burton Tower Society recognizes and honors those very special friends who have included UMS in their estate plans. UMS is grateful for this important support, which will continue the great traditions of artistic excellence, educational opportunities and community partnerships in future years.

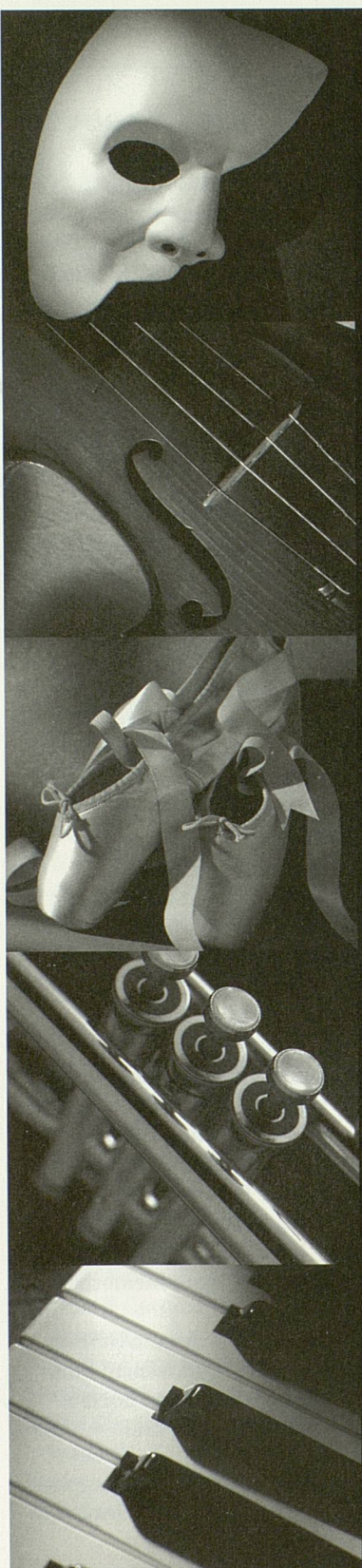
Anonymous
Carol and Herb Amster
Dr. and Mrs.
David G. Anderson
Mr. Neil P. Anderson
Catherine S. Arcure
Elizabeth Bishop
Mr. and Mrs. Pal E. Borondy
Barbara Everitt Bryant
Pat and George Chatas
Mr. and Mrs.
John Alden Clark
Douglas D. Crary
H. Michael and
Judith L. Endres
Beverley and Gerson Geltner
John and Martha Hicks
Mr. and Mrs. Richard Ives
Marilyn Jeffs
Thomas C. and
Constance M. Kinnear
Charlotte McGeoch
Michael G. McGuire
Dr. Eva Mueller
Len Niehoff
Nancy Niehoff
Dr. and Mrs.
Frederick C. O'Dell
Mr. and Mrs. Dennis Powers
Mr. and Mrs. Michael Radock
Mr. and Mrs. Jack W. Ricketts
Mr. and Mrs.
Willard L. Rodgers

Prudence and
Amnon Rosenthal
Mr. Haskell Rothstein
Irma J. Skelnar
Herbert Sloan
Art and Elizabeth Solomon
Roy and JoAn Wetzel
Mr. and Mrs.
Ronald G. Zollars

ENDOWED FUNDS

The future success of the University Musical Society is secured in part by income from UMS's endowment. UMS extends its deepest appreciation to the many donors who have established and/or contributed to the following funds.

H. Gardner Ackley
Endowment Fund
Amster Designated Fund
Catherine S. Arcure
Endowment Fund
Choral Union Fund
Hal and Ann Davis
Endowment Fund
Ottmar Eberbach Funds
Epstein Endowment Fund
JazzNet Endowment Fund
William R. Kinney
Endowment Fund
NEA Matching Fund
Palmer Endowment Fund
Mary R. Romig-deYoung
Music Appreciation Fund
Charles A. Sink Memorial
Fund
Catherine S. Arcure/Herbert
E. Sloan Endowment Fund
University Musical Society
Endowment Fund



*Appreciate
art for
what it is...
a window
into our
humanity.*

EDWARD
SUROVELL
≡ **REALTORS**

www.surovellrealtors.com
800-445-5197

Ann Arbor • Adrian • Chelsea • Irish Hills • Jackson
Monroe • Saline • Tecumseh • Ypsilanti

SPECIAL ACKNOWLEDGMENTS

UMS would like to give special thanks to the following individuals and businesses who have made special contributions of time, talent, and service during the 02/03 season.

Special appreciation goes to:

- A-1 Rentals, Inc.
Sadia Abbas
ACCESS
Benjamin Acosta-Hughes
Jim Adams and Quest Lighting
David Aderente
Aerial Enterprises/Jim Lillie
Raquel and Bernard Agranoff
Alexandra's in Kerrytown
Amadeus Café
Greta Anderson
Naomi André
Ann Arbor Area Convention and Visitors Bureau/Tracy Watts
Ann Arbor Art Center
Ann Arbor Automotive
Ann Arbor District Library
Ann Arbor News
Ann Arbor Observer
Ann Arbor Public Schools
Ann Arbor Women's City Club
Arbor Brewing Co.
Ashley Mews
Avanti Hair Designers
The Back Alley Gourmet
Barnes Ace Hardware
Lois and David Baru
Baxter's Wine Shop
BBJ Linens
Beach Middle School
Kathleen Beck
Bella Ciao Trattoria
Kathy Benton and Bob Brown
Lynda Berg
Bivouac
Terry Blackhawk
Bradley Bloom
Wendy Bloom
The Blue Nile Restaurant
Bodywise Therapeutic Massage
Erin Boevé
Mimi and Ron Bogdasarian
Gail Bohner
- Borders Book and Music
Janice Stevens Botsford
Melba Joyce Boyd
Susan Bozell
Tana Breiner
Barbara Everitt Bryant
By the Pound
Susan Byrnes
Café Marie
Margot Campos
Anthony Cantrell
Cappellos Hair Salon
Dennis Carter
Remonia Chapman
Chelsea Flowers
J. Scott Clark
Linda Chomin
Coach Me Fit
Katherine Collier
Bill and Nan Conlin
M.C. Conroy
Contexts for Classics
Hugh and Elly Cooper
Cottage Inn
Cousins Heritage Inn
Current
Roderick and Mary Ann Daane
D'Amato's Italian Restaurant
Dance Gallery Studios
David Smith Photography
Peter and Norma Davis
Demorest Wines and Spirits and Sue and Peter Unger
Robert Derkacz
Ellwood Derr
Detroit Free Press
Detroit News
Detroit Public Schools
Bill DeYoung
Glenda Dickerson
The Display Group
Frances Dolan
Dough Boys Bakery
Nancy Doyal
Mr. and Mrs. Kit Eagle
The Earle
Eastover Natural Nail Care
Julie Ellison
Emerson School
EMU Department of Dance
EMU Department of Theatre
Katherine and Damian Farrell
Shari Faulhaber
Susan Filipiak
- Ken and Penny Fischer
Jessica Fogel
Food Art
Food for All Seasons
Ford Honors Program Gala Committee
George Fornero
Sara Frank
Erik Fredricksen
Gallery 212
The Gandy Dancer
Beverley and Gerson Geltner
Beth Genné
Linda Gregerson
Simon Gikandi
Derrick Gilbert
Brenda Gluth
Jeff Gnagey
Marilyn Gouin
Michael Gould
Great Harvest Bread Company
Linda and Richard Greene
Tim Grimes
Keila Grinberg
Michael Haithcock
Hammell Music/Christopher Claypoole
Jeffery Harrold
Nina Hauser
Jim Haven
Al Hearn
Heidi Hebert
Terry Heck
Herb David Guitar Studio
Debbie and Norman Herbert
Freda Herseth
Barbara Hodgdon
Victoria Holley-Foster
Judith Hommel
Kim Hunter
IATSE Local 395
Elizabeth James
Andrew Jennings
John's Pack & Ship
John Kantu
Larry Johnson
Paul Jomantas
Dino Kalogeropoulos
Steve and Mercy Kasle
Jeff Kass
Katherine's Catering
Cindy Kellerman
Kennedy Center Partners in Education Program
Phillip Kerr
- Kenneth Kiesler
Kilwin's Chocolate Shoppe
King's Keyboard House
Kinko's Copies
Marty Kohn
Kosciuszko Middle School
Laky's Salon
Ray Lance
Barry LaRue
George and Beth Lavoie
Le Dog
Leopold Bros. of Ann Arbor
Richard LeSueur
Jon Lockard
David Lyman
Naomi Long Madgett
Carl Lutkehaus
Doni Lystra
MC Design/Margot Campos
Main Street Association
Mainstreet Ventures
Bebete Martins
Ayanna McConnell
Kate Mendeloff
Ernest and Jeanne Merlanti
Metro Times
David Metz
John Metzger
Michigan Car Services, Inc. and Airport Sedan, LTD/Jerry Armstrong
Michigan Council for Arts and Cultural Affairs
Michigan Daily
Michigan League
Michigan Media/Joe Yunkman
Michigan Theater
Noni Miller
William Miller
Moe Sport Shops Inc.
Lester Monts
Eunice Moore
Robert and Melinda Morris
Mosaic Youth Theatre
Mary Motherwell
MOTTEP of Detroit
Lavinia Moyer
Steve Mullaney
Kathleen Murrel
National Endowment for the Arts
Joanne Navarre
Bob Needham
Jean Nelson
John Neville-Andrews

Special Acknowledgments, con't.

The New Public
Scholarship in the Arts,
Humanities, and Design
Seminar
Nicola's Books, Little
Professor Book Co.
Susan Isaacs Nisbett
Jeremy Nordquist
Marcus Nornes
Neutral Zone
Julianne O'Brien Pederson
Observer and
Eccentric Newspapers
Akinlolu Ojo
Bruce Oshaben
Marysia Ostafin
Paesano's Restaurant
Lisa Panetta-Alt
Pfizer Global Research and
Development: Ann
Arbor Laboratories
Pioneer High School
David Potter
Power Center for the
Performing Arts
Preview Properties
Mary Price
Linda Prieskorn
Yopie Prins
Produce Station
Pittsfield Elementary
Kanchna Ramachandran
Randy Parrish
Fine Framing
Julie Ranspach
Rossi Ray-Taylor
Real Detroit
Red Hawk Bar & Grill
Regrets Only
Nancy Reinhardt
Deanna Relyea
Kate Remen-Wait
Shannon Rice
Rightside Cellar
Ritz Camera
One Hour Photo
Brian Roddy
Ellen Rowe
Don and
Judy Dow Rumelhart
Safa Salon and Day Spa
Michael Susanne Salon
Salon Vertigo
Rosallyn Sarvar
Maya Savarino
Savitski Design
Kathryn Savoie
Michael Schoenfeldt
Penny and Paul Schreiber
Karen Schulte
David Scobey

Ruth Scodel
Shaman Drum Bookshop
Bright Sheng
Amy Sheon
Stephen Shipp
George Shirley
Elaine Sims
Erica Skelcey
Loretta Skewes
David and Peter Smith
Mary Catherine Smith
Dr. Elaine R. Soller
Cindy Sowers
Spain Middle School
Peter Sparling
Spencer Elementary School
St. Francis of Assisi/
David Barera
Leslie Stainton
State Street Association
Maureen Stoeffler
Coreena Storms
Mark Stryker
STUDIOsixteen
Lucia Suarez
Phyllis Taylor
Herman Thompson
Ron Torrella
Tom Trawick
Sandy Trosien
Khari Kamani Turner
Two Sisters Gourmet
U-M Alumni Center
U-M Association of
Black Professionals,
Administrators, Faculty
and Staff
U-M Center for
Afro-American and
African Studies
U-M Center for Latin
American and
Caribbean Studies
U-M Center for South
Asian Studies
U-M Department of Dance
U-M Department of
English Language and
Literature
U-M Department of
Theatre and Drama
U-M Gifts of Art Program
U-M Hellenic Students
Association
U-M Honors Program
U-M Institute for the
Humanities
U-M Institute for Research
on Women and Gender
U-M International Institute

U-M Life Sciences Values
and Society Program
U-M Media Union/
Tom Bray
U-M Modern Greek
Department
U-M Museum of Art
U-M Office of the
Vice President for
Government Relations
U-M Residential College
U-M School of Music
U-M Special Collections
Library
Donald Uchman
Michael Udow
Unit Packaging/
Dave O'Brien
University Productions
Van Bovens
Ralph Valdez
Ashutosh Varshney
Village Corner
WDET
WEMU
WGTE
WUOM
Brent Wagner
Rebecca Walker
Martin Walsh
Washington Street Gallery
Washtenaw Community
College
Washtenaw Intermediate
School District
Wayne RESA
Wayne State University
Department of Theatre
and Drama
Weber's Restaurant
Webers Florist and
Bruce Weber
Steven Whiting
Whole Foods
Diane Widzinski
Angus Williams
Ralph Williams
Dennis Wilson
Mary Ann Yeager
Linda Yohn
Ypsilanti High School
Ypsilanti Public Schools
Joe Yunkman
Zanzibar Restaurant

Advertiser Index

BC Ann Arbor
Summer Festival
24 Bank of Ann Arbor
12 Comerica
30 Edward Surovell
Realtors
FC Ford Motor Company
18 Forward Group
12 Herb David
Guitar Studio
24 Howard Cooper
Imports
10 Key Bank
20 Lewis Jewelers
22 Purple Rose Theater
26 WGTE

**NADJA SALERNO-SONNENBERG,
SÉRGIO AND ODAIR ASSAD**



Tickets On Sale Now

Tickets are available by calling 734.764.2538,
or by visiting the Michigan League Box Office.
Tickets are also available at www.tickets.com.

To receive our brochure, call 734.647.2278.
Visit our website at www.mlive.com/aasf.

Ann Arbor Summer Festival

20TH ANNIVERSARY SEASON



Michigan Council for
Arts and Cultural Affairs



NATIONAL
ENDOWMENT
FOR THE ARTS



Power Center Series

MOMIX IN *BASEBALL*

Saturday, June 14, 8:00 pm

Sunday, June 15, 2:00 pm

ORCHESTRA BAOBAB

Tuesday, June 17, 8:00 pm

THE DJANGO REINHARDT

NEW YORK FESTIVAL

Wednesday, June 18, 8:00 pm

PRESERVATION

HALL JAZZ BAND

Thursday, June 19, 8:00 pm

SPALDING GRAY IN

IT'S A SLIPPERY SLOPE

Friday, June 20, 8:00 pm

TRINITY IRISH

DANCE COMPANY

Saturday, June 21, 8:00 pm

THE FLAMING IDIOTS

Sunday, June 22, 8:00 pm

DEE DEE BRIDGEWATER WITH

THE PAUL KELLER ORCHESTRA

Wednesday, June 25, 8:00 pm

WAIT, WAIT...

DON'T TELL ME

Thursday, June 26, 8:00 pm

PETER SCHICKELE MEETS

PDO BACH: THE SEQUEL

WITH THE ANN ARBOR

SYMPHONY ORCHESTRA

Friday, June 27, 8:00 pm

NADJA SALERNO-

SONNENBERG, SÉRGIO

AND ODAIR ASSAD

Saturday, June 28, 8:00 pm

DOC WATSON

THE ALISON BROWN QUARTET

Sunday, June 29, 8:00 pm

THE NYLONS

Monday, June 30, 8:00 p.m.

SOLOS WITH PIANO

AN EVENING OF MUSIC

AND DANCE WITH

MIKHAIL BARYSHNIKOV AND

PIANIST PEDJA MUZIJEVIC

Wednesday, July 2, 8:00 pm

Thursday, July 3, 8:00 pm

THE CAPITOL STEPS

Friday, July 4,

5:00 pm and 8:00 pm

SHANGRI-LA

CHINESE ACROBATS

Saturday, July 5,

2:00 pm and 8:00 pm

JUNE 13 - JULY 6

2003

PROGRAM SUBJECT TO CHANGE.



Ford Motor Company
100 YEARS

The Ford Honors Program
is made possible by
Ford Motor Company