

# ums

presentation

University Musical Society  
of the University of Michigan

Fall 2002 Season

Boston  
Pops

# MICHIGAN

## Your NPR<sup>TM</sup> News Station

91.7 Ann Arbor/Detroit  
104.1 Grand Rapids  
91.1 Flint

[michiganradio.org](http://michiganradio.org)



5 - 9 am Monday - Friday



1 - 2 pm / 8 - 9 pm  
Monday - Friday

**ALL  
THINGS  
CONSIDERED**

4 - 6:30 pm  
Monday - Friday

# RADIO

# university musical society

University of Michigan • Ann Arbor

UMS leadership	2	Letters from the Presidents
	4	Letter from the Chair
	5	Corporate Leaders/Foundations
	11	Profiles
	14	UMS Board of Directors
	14	UMS Senate
	14	Advisory Committee
	15	UMS Staff
	15	UMS Teacher Advisory Committee
UMS services	17	General Information
	18	Tickets
	19	Group Tickets
	19	Discounted Student Tickets
	19	Gift Certificates
	21	The UMS Card
	21	<a href="http://www.ums.org">www.ums.org</a>
UMS annals	23	UMS History
	25	UMS Choral Union
	26	Venues/Burton Memorial Tower
UMS experience	29	The 02/03 UMS Season
	35	Education & Audience Development
	37	Restaurant & Lodging Packages
	39	UMS Preferred Restaurant Program
	39	<i>BRAVO!</i>
	43	UMS Delicious Experiences
UMS support	45	Advisory Committee
	45	Sponsorship & Advertising
	47	Internships & College Work-Study
	47	Ushers
	48	Support
	56	UMS Advertisers

## FROM THE UM PRESIDENT

The University of Michigan (UM) would like to join the University Musical Society (UMS) in welcoming you to the 2002/2003 season. Additionally, we would like to thank you for your support of the performing arts. We are proud of the wonderful partnership we have developed with UMS and of our



role as co-sponsor and co-presenter of several events on this season's calendar. These events reflect the artistic beauty and passion that are integral to the human experience. They are also wonderful opportunities

for University of Michigan students and faculty to learn about the creative process and sources of inspiration that motivate artists and scholars.

The current season marks the second residency by the Royal Shakespeare Company of Stratford, England, which performs three plays in March: *The Merry Wives of Windsor*, *Coriolanus*, and Salman Rushdie's *Midnight's Children*. UM and UMS co-presentations are not limited to theater, but also include performances by the Vienna Philharmonic, the Bolshoi Ballet, and a special event entitled "Evening at the Apollo," in which the best performing groups from Detroit and Ann Arbor are given a chance to compete for a slot at Harlem's Apollo Theater Amateur Night, where Ella Fitzgerald, Sarah Vaughn, Billie Holiday, and other legends of 20th-

century American music got their big breaks. As befits the educational missions of both the University and UMS, we should also recognize the co-sponsorship of educational programming involving, among others, the Abbey Theatre of Ireland, Grupo Corpo, Sekou Sundiata and creative co-sponsorship of presentations by the Hubbard Street Dance Company and the well-known female *a cappella* group Sweet Honey in the Rock.

Most significantly, I would like to thank the faculty and staff of UM and UMS for their hard work and dedication to making this partnership a success. UMS staff, in particular, work with the University's faculty and students to create learning opportunities for our campus, and in the case of the larger residencies, for the greater community.

The University of Michigan is pleased to support the University Musical Society during its 02/03 season. We share the goal of making our co-presentations the type of academic and cultural events that benefit the broadest possible constituency.

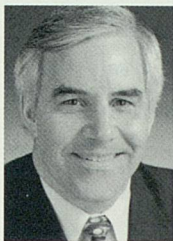
Sincerely,

A handwritten signature in black ink that reads "Mary Sue Coleman". The signature is fluid and cursive.

Mary Sue Coleman  
President, University of Michigan

## FROM THE UMS PRESIDENT

**T**hank you for joining us for this UMS performance. We appreciate your support of the performing arts and of UMS, and we hope we'll see you at more of our programs this season. Check the complete listing of UMS's 2002/2003 events beginning on page 29 and on our website at [www.ums.org](http://www.ums.org).



We welcome UM President Mary Sue Coleman to the southeast Michigan community and to membership on the UMS Board of Directors. The university from which President Coleman came to Michigan

has a distinguished record in its support of creative artists. During the Millennium season alone, while Dr. Coleman was president, the University of Iowa's Hancher Auditorium premiered over 20 new works in music, dance, and theater, all of them commissioned by Hancher. This unprecedented level of support of creative artists by a university presenting organization captured the attention of the performing arts field worldwide and reinforced the idea that research in the performing arts is as important and as valid to a great university as is research in other fields. We thank Dr. Coleman and her predecessors Lee C. Bollinger and B. Joseph White for the extraordinary level of UM support for the second residency of the Royal Shakespeare Company March 1-16 and of eight other projects this season that offer special value to the University's mission of teaching, research, and service.

This season offers some special challenges for UMS with the closing of Hill Auditorium for restoration and renovation. With your understanding and support, we know we will

overcome these difficulties and have a successful season. As we await our reopening concert scheduled for January 2004, UMS is creating special opportunities for our patrons to see and hear world-renowned artists in outstanding venues in Detroit, Ypsilanti, and Ann Arbor. You won't want to miss the first southeast Michigan presentations of the Bolshoi Ballet November 20-24 or the February 27 return of the Vienna Philharmonic for the first time in the region since 1988. For many of our Detroit performances, UMS is offering transportation by luxury coach to our Ann Arbor patrons. And we urge you to bring the whole family to UMS's first event in Crisler Arena when the Boston Pops performs its Holiday Concert on December 8.

Yes, things will be different this season. The UMS staff is determined to do everything we can to make this season run as smoothly as possible for you and our other patrons. Please let us know if you have any questions or problems. Call our ticket office at 734.764.2538, now led by Ticket Services Manager Nicole Paoletti, successor to Michael Gowing, who retired August 30. You should also feel free to get in touch with me about anything related to UMS. If you don't see me in the lobby at our performances, you can send me an email message at [kenfishch@umich.edu](mailto:kenfishch@umich.edu) or call me at 734.647.1174.

Very best wishes,

A handwritten signature in black ink that reads "Ken Fischer". The signature is fluid and cursive.

Kenneth C. Fischer  
*UMS President*

# UMS leadership

## LETTER FROM THE CHAIR



**I**t is a pleasure to welcome you to this performance of the UMS 02/03 season. With world-renowned performers, new community partnerships, and ever-expanding educational activities, our 124th season continues our commitment to artistic and educational excellence and our dedication to our audiences and extended community. We are delighted that you are here to share in the excitement of the live performing arts.

As we enjoy this performance, we want to recognize and thank the many generous supporters who help make this extraordinary season possible. As you know, the price of your ticket does not cover our costs of presenting this performance. To bridge the gap, we must rely on the generosity of our many individual, corporate, governmental and foundation donors. In supporting UMS, they have publicly recognized the importance of the arts in our community and helped create new educational opportunities for students and adults of all ages and backgrounds.

So, as you read through the program book and take pleasure in this performance, please join me in thanking our many generous contributors. They are playing an important role in the artistic life of our community, and we are truly grateful for their support.

Sincerely,

A handwritten signature in cursive script that reads "Beverley Geltner".

Beverley Geltner  
*Chair, UMS Board of Directors*

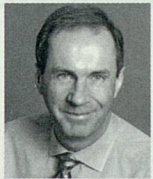
## CORPORATE LEADERS / FOUNDATIONS

**John M. Rintamaki**

*Group Vice President, Chief of Staff,  
Ford Motor Company*

*Ford Motor Company  
Fund*

“At Ford Motor Company, we believe the arts educate, inspire and bridge differences among cultures. They present for us all a common language and enhance our knowledge of each other and the world. We continue to support the University Musical Society and its programs that through the arts bring forth the human spirit of creativity and originality.”

**David Canter**

*Senior Vice President, Pfizer, Inc.*



“The science of discovering new medicines is a lot like the art of music: To make it all come together, you need a diverse collection of very brilliant people. What you really want are people with world-class talent—and to get those people, you have to offer them a special place to live and work. UMS is one of the things that makes Ann Arbor quite special. In fact, if one were making a list of the things that define the quality of life here, UMS would be at or near the very top. Pfizer is honored to be among UMS’s patrons.”


**Douglass R. Fox**

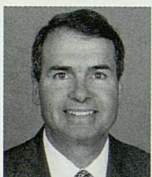
*President, Ann Arbor Automotive*

“We at Ann Arbor Automotive are pleased to support the artistic variety and program excellence given to us by the University Musical Society.”


**William M. Broucek**

*President and CEO, Bank of Ann Arbor*

“Bank of Ann Arbor is pleased to contribute to the richness of life in our community by our sponsorship of the 2002/2003 UMS season. We look forward to many remarkable performances over the year. By your attendance you are joining with us in support of this vibrant organization. Thank you.”


**Jorge A. Solis**

*Senior Vice President, Bank One, Michigan*

“Bank One is honored to be a partner with the University Musical Society’s proud tradition of musical excellence and artistic diversity.”


**Habte Dadi**

*Manager, Blue Nile Restaurant*

“At the Blue Nile, we believe in giving back to the community that sustains our business. We are proud to support an organization that provides such an important service to Ann Arbor.”


**Greg Josefowicz**

*President and CEO, Borders Group, Inc.*

“As a supporter of the University Musical Society, Borders Group is pleased to help strengthen our community’s commitment to and appreciation for artistic expression in its many forms.”



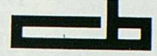




### **Carl Brauer**

*Owner, Brauer Investments*

“Music is a gift from God to enrich our lives. Therefore, I enthusiastically support the University Musical Society in bringing great music to our community.”



### **Len Niehoff**

*Shareholder, Butzel Long*

“UMS has achieved an international reputation for excellence in presentation, education, and most recently creation and commissioning. Butzel Long is honored to support UMS, its distinctive and diverse mission, and its important work.”



### **David G. Loesel**

*President, T.M.L. Ventures, Inc.*

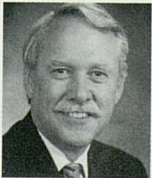
“Café Marie’s support of the University Musical Society Youth Program is an honor and a privilege. Together we will enrich and empower our community’s youth to carry forward into future generations this fine tradition of artistic talents.”



### **Clayton Wilhite**

*Managing Partner, CFI Group, Inc.*

“We’re pleased to be in the group of community businesses which supports UMS Arts and Education. We encourage those who have yet to participate to join us. Doing so feels good.”



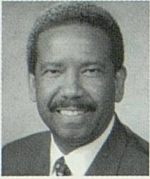
### **Richard A. Collister**

*Executive Vice President, Comerica Incorporated*

*President, Comerica Charitable Foundation*

“The University Musical Society is renowned for its rich history and leadership in the performing arts. Comerica understands the nurturing role UMS plays in our community. We are grateful to UMS for coordinating this 124th grand season of magnificent live performances.”





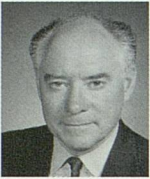
### W. Frank Fountain

*President, DaimlerChrysler Corporation Fund*

“DaimlerChrysler is committed to nurturing strong and vibrant communities through its support of the arts. We are pleased to partner with UMS in its effort to promote the cultural and economic vitality of our community.”

DAIMLERCHRYSLER

DaimlerChrysler Corporation Fund



### Fred Shell

*Vice President, Corporate and Government Affairs,  
DTE Energy*

“Plato said, ‘Music and rhythm find their way into the secret places of the soul.’ The DTE Energy Foundation congratulates UMS for touching so many hearts and souls by inspiring, educating and enriching the lives of those in our community.”

**DTE Energy  
Foundation**



### Edward Surovell

*President, Edward Surovell Realtors*

“It is an honor for Edward Surovell Realtors to support the distinguished University Musical Society. For over a century it has been a national leader in arts presentation, and we encourage others to contribute to UMS’s future.”

**EDWARD  
SUROVELL  
REALTORS**



### Leo Legatski

*President, Elastizell Corporation of America*

“The University Musical Society is a leading presenter of artistic groups—music, dance and theater. Please support their efforts in the development of new works, which they combine with educational workshops in the region.”

**Elastizell**



### Rick M. Robertson

*Michigan District President, KeyBank*

“KeyBank is a proud supporter of the performing arts and we commend the University Musical Society on its contributions to the cultural excellence it brings to the community.”

**KeyBank**

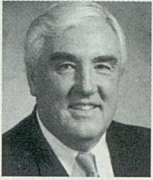


**Jan Barney Newman**

*Michigan Regional Director, Learning Express*

“Learning Express–Michigan is committed to promoting toys that excite imaginations of children. It is therefore with pleasure that we support the stimulating and diverse presentations of UMS that educate and enrich the entire community.”

**Learning Express  
of Michigan**



**Eugene “Trip” Bosart**

*Senior Managing Director, McDonald Investments, Inc.*

“McDonald Investments is delighted to partner with the University Musical Society and bring world class talent and performances to audiences throughout southeastern Michigan.”

**McDonald  
Investments**



**Albert M. Berriz**

*President and CEO, McKinley Associates, Inc.*

“The success of UMS is based on a commitment to present a diverse mix of quality cultural performances. McKinley is proud to support this tradition of excellence which enhances and strengthens our community.”

**mckinley**

*Associates*



**Erik H. Serr**

*Principal, Miller, Canfield, Paddock & Stone, P.L.C.*

“As 2002 marked Miller Canfield’s 150th anniversary, we salute and appreciate the University Musical Society for presenting wonderful cultural events to our community for more than 120 years. Miller Canfield is proud to support such an inspiring organization.”



**Robert J. Malek**

*Community President, National City Bank*

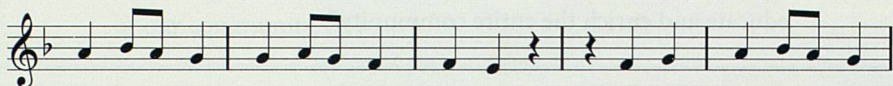
“A commitment to quality is the main reason we are a proud supporter of the University Musical Society’s efforts to bring the finest artists and special events to our community.”

**National City**



## We Have It!

Timeless classics. Eclectic world music. Harmonic new age compositions. Smokey blues. Hot jazz. Toe-tappin' folk songs. 24-hours a day.



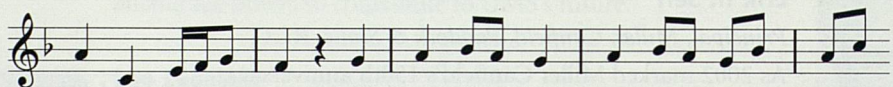
## We Also Have...

In-depth news reports. Award-winning news programs. Throughout the day. Every day.



## What Don't We Have?

No commercials. No endless announcer chatter. No silly contests.

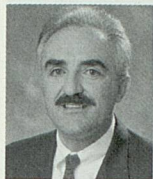


## Who Are We?

WKAR/FM 90.5 Mid-Michigan's premiere public radio station. Call (517) 432-9527 for a complimentary copy of our program guide.

*am 810 wkare fm 90.5*

[www.WKAR.org](http://www.WKAR.org)



### Joe Sesi

*President, Sesi Lincoln Mercury Volvo Mazda*

“The University Musical Society is an important cultural asset for our community. The Sesi Lincoln Mercury Volvo Mazda team is delighted to sponsor such a fine organization.”



### Thomas B. McMullen

*President, Thomas B. McMullen Co., Inc.*

“I used to feel that a UM–Ohio State football ticket was the best ticket in Ann Arbor. Not anymore. UMS provides the best in educational entertainment.”



### Sharon L. Beardman

*Regional Vice President, TIAA-CREF Individual and Institutional Services, Inc.*

“TIAA-CREF works with the employees of the performing arts community to help them build financial security, so that money doesn’t get in the way of the art. We are proud to be associated with the great tradition of the University Musical Society.”



## PROFILES

### Peter Laki

*Program Note Annotator*



**P**eter Laki is a native of Budapest, Hungary, where he studied violin, piano, composition, voice, and musicology. Peter has been a contributing writer to UMS since 1995 and has contributed over 240 individual pieces to UMS, covering the classical music repertoire from Bach to 21st-century composition. After studies at the Sorbonne in Paris, he came to the United States in 1982 and earned a Ph.D. in musicology from the University of Pennsylvania in 1989. Since 1990 he has served as Program Annotator of The Cleveland Orchestra and has also taught music history at Kent State, John Carroll, and Case Western Reserve Universities. He is the editor of *Bartók and His World*, a collection of essays and documents published by Princeton University Press (1995). He has also contributed two articles to the Cambridge Music Handbook series and has lectured at musicological conferences in the US and Europe.

*In real estate as in the arts,  
performance is everything.*

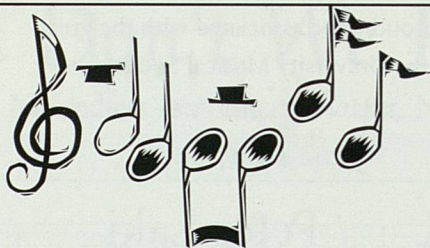
EDWARD  
**SUROVELL**  
REALTORS

Offices in

Ann Arbor • Ann Arbor/Ypsilanti • Adrian • Chelsea  
Irish Hills • Jackson • Monroe • Saline • Tecumseh

[www.surovellrealtors.com](http://www.surovellrealtors.com)

(800) 445-5197



**Enriching our community  
through the arts.**



**Bank OF ANN ARBOR**

Downtown Ann Arbor (734) 662-1600 • Traver Village Shopping Center (734) 662-3800  
Washtenaw Avenue (734) 822-1500 • Downtown Ypsilanti (734) 485-9400

Member  
**FDIC**

[www.bankofannarbor.com](http://www.bankofannarbor.com)

## FOUNDATION AND GOVERNMENT SUPPORT

UMS gratefully acknowledges the support of the following foundations and government agencies.

\$100,000 and above

**Doris Duke Charitable  
Foundation/JazzNet**  
**The Ford Foundation**  
**Michigan Council for Arts and  
Cultural Affairs**  
**The Power Foundation**  
**Wallace-Reader's Digest Funds**

\$50,000 - 99,999

**Community Foundation for  
Southeastern Michigan**

\$10,000 - 49,999

**Association of Performing Arts  
Presenters/Arts Partners**  
**National Endowment for the Arts**  
**New England Foundation for the Arts**

\$1,000 - 9,999

**Arts Midwest**  
**Gelman Educational Foundation**  
**Heartland Arts Fund**  
**The Lebensfeld Foundation**  
**Mid-America Arts Alliance**  
**Montague Foundation**  
**THE MOSAIC FOUNDATION**  
**(of R. and P. Heydon)**  
**Sarns Ann Arbor Fund**  
**Rosalie Edwards/Vibrant Ann Arbor Fund**

\$100 - 999

**Erb Foundation**



# LEWIS JEWELERS

SINCE 1921

"YOUR DIAMOND STORE"

## Diamonds For Less!



Round



Pear



Emerald



Marquise



Oval

- ◆ Over 80 years in the diamond business
- ◆ One of the largest diamond selections in Michigan
- ◆ G.I.A. graded diamonds
- ◆ Certificate diamonds
- ◆ The lowest prices
- ◆ Every size, shape, cut, color and quality
- ◆ A large selection of settings and mountings
- ◆ Custom designing
- ◆ Appraisals and photographs by a graduate gemologist from the Gemological Institute of America

2000 W. Stadium Blvd., Ann Arbor

(734) 994-5111

HOURS: 9:30-5:30 ◆ Thur 9:30-8:30 ◆ Sat 9:30-5:00

Family Owned and Operated Since 1921

UNIVERSITY MUSICAL SOCIETY  
of the University of Michigan

UMS BOARD OF DIRECTORS

Beverley B. Geltner, <i>Chair</i>	Janice Stevens Botsford	Toni Hoover Gloria James Kerry	Judy Dow Rumelhart Maya Savarino
Alice Davis Irani, <i>Vice-Chair</i>	Barbara Everitt Bryant	Helen B. Love	Herbert Sloan
Prudence L. Rosenthal, <i>Secretary</i>	Kathleen G. Charla	Barbara Meadows	Timothy P. Slottow
Erik H. Serr, <i>Treasurer</i>	Mary Sue Coleman	Lester P. Monts	Jorge A. Solis
	Jill A. Corr	Alberto Nacif	Peter Sparling
	Hal Davis	Jan Barney Newman	Clayton Wilhite
	Sally Stegeman DiCarlo	Gilbert S. Omenn	Karen Wolff
	David Featherman	Randall Pittman	
	Debbie Herbert	Philip H. Power	
		Rossi Ray-Taylor	

UMS SENATE

(former members of the UMS Board of Directors)

Robert G. Aldrich	James J. Duderstadt	Patrick B. Long	John O. Simpson
Herbert S. Amster	David J. Flowers	Judythe H. Maugh	Carol Shalita Smokler
Gail Davis Barnes	William S. Hann	Paul W. McCracken	Lois U. Stegeman
Richard S. Berger	Randy J. Harris	Rebecca McGowan	Edward D. Surovell
Maurice S. Binkow	Walter L. Harrison	Shirley C. Neuman	James L. Telfer
Lee C. Bollinger	Norman G. Herbert	Len Niehoff	Susan B. Ullrich
Paul C. Boylan	Peter N. Heydon	Joe E. O'Neal	Eileen Lappin Weiser
Carl A. Brauer	Kay Hunt	John D. Paul	Gilbert Whitaker
Allen P. Britton	Stuart A. Isaac	John Psarouthakis	B. Joseph White
Letitia J. Byrd	Thomas E. Kauper	Gail W. Rector	Marina v.N. Whitman
Leon S. Cohan	David B. Kennedy	John W. Reed	Iva M. Wilson
Peter B. Corr	Richard L. Kennedy	Richard H. Rogel	
Jon Cosovich	Thomas C. Kinnear	Ann Schriber	
Douglas Crary	F. Bruce Kulp	Daniel H. Schurz	
Ronald M. Cresswell	Leo A. Legatski	Harold T. Shapiro	
Robert F. DiRomualdo	Earl Lewis	George I. Shirley	

ADVISORY COMMITTEE

Sara B. Frank, <i>Chair</i>	Laura Caplan	Karen Gunderson	Bob Morris
Louise Townley, <i>Vice-Chair</i>	Cheryl Cassidy	Nina E. Hauser	Bonnie Paxton
Sue Schroeder, <i>Secretary/Treasurer</i>	Patrick Conlin	Kathy Hentschel	Mary Pittman
Raquel Agranoff	Elly Rose Cooper	Debbie Herbert	Jeri Sawall
Barbara Bach	Nita Cox	Anne Kloack	Penny Schreiber
Lois Baru	Mary Ann Daane	Beth LaVoie	Aliza Shevrin
Judi Batay-Csorba	Norma Davis	Stephanie Lord	Morrine Silverman
Kathleen Benton	Sally Stegeman DiCarlo	Esther Martin	Maria Simonte
Mimi Bogdasarian	Lori Director	Mary Matthews	Loretta Skewes
Jennifer Boyce	Nancy Ferrario	Ingrid Merikoski	Cynny Spencer
Victoria Buckler	Anne Glendon	Ernest Merlanti	Wendy Woods
	Alvia Golden	Jeanne Merlanti	
	Linda Greene	Candice Mitchell	



## UMS STAFF

**Administration/  
Finance**

Kenneth C. Fischer,  
*President*  
Lisa Herbert,  
*Special Projects Director*  
Elizabeth E. Jahn,  
*Assistant to the  
President*  
John B. Kennard, Jr.,  
*Director of  
Administration*  
Chandrika Patel, *Senior  
Accountant*  
John Peckham,  
*Information Systems  
Manager*

**Choral Union**

Thomas Sheets,  
*Conductor*  
Jason Harris, *Assistant  
Conductor*  
Andrew Kuster, *Associate  
Conductor*  
Kathleen Operhall,  
*Manager*  
Donald Bryant,  
*Conductor Emeritus*

**Development**

Susan McClanahan,  
*Director*  
Mary Dwyer, *Manager of  
Corporate Support*  
William P. Maddix,  
*Development Assistant*  
Lisa Michiko Murray,  
*Manager of Foundation  
and Government  
Grants*  
M. Joanne Navarre,  
*Manager of Individual  
Support*  
Lisa Rozek, *Assistant to  
the Director of  
Development*  
J. Thad Schork,  
*Development Officer*

**Education/Audience  
Development**

Ben Johnson, *Director*  
Erin Dahl, *Youth  
Education Assistant*  
Kristin Fontichiaro,  
*Youth Education  
Manager*  
Dichondra Johnson,  
*Manager*  
Warren Williams,  
*Manager*

**Marketing/Public  
Relations**

Sara Billmann, *Director*  
Susan Bozell, *Marketing  
Manager*  
Gulshirin Dubash,  
*Public Relations  
Manager*  
Kirsten Karlen,  
*Promotion Coordinator*

**Programming/  
Production**

Michael J. Kondziolka,  
*Director*  
Emily Avers, *Production  
Administrative Director*  
Christine Field,  
*Production Assistant*  
Jasper Gilbert, *Technical  
Director*  
Jeffrey Golde, *Production  
and Programming  
Assistant*  
Susan A. Hamilton,  
*Artist Services  
Coordinator*  
Mark Jacobson,  
*Programming Manager*  
Bruce Oshaben, *Head  
Usher*

**Ticket Office**

Nicole Paoletti, *Manager*  
Angela Clock, *Associate*  
Sally A. Cushing,  
*Associate*  
Laurel Hufano, *Group  
Sales Coordinator*  
Robert W. Hubbard,  
*Staff*

**Work-Study**

Aubrey Alter  
April Chisholm  
Kindra Coleman  
Jamie Freedman  
Lakshmi Kilaru  
Dawn Low  
Claire Molloy  
Fred Peterbark  
Rosie Richards  
Jennie Salmon  
Corey Triplett  
Sean Walls

**Interns**

Shirley Bartov  
Vineeta Bhandari  
Carla Dirlikov  
Jennifer Gates  
Milena Grubor  
Lindsay Mueller  
Sameer Patel

**President Emeritus**

Gail W. Rector

## UMS TEACHER ADVISORY COMMITTEE

Fran Ampey  
Kitty Angus  
Alana Barter  
Joseph Batts  
Linda Batts  
Kathleen Baxter  
Elaine Bennett  
Lynda Berg  
Yvette Blackburn  
Barbara Boyce  
Letitia Byrd

Doug Cooper  
Nancy Cooper  
Gail Davis Barnes  
Ann Deckert  
Gail Dybdahl  
Keisha Ferguson  
Doreen Fryling  
Yulonda Gill-Morgan  
Brenda Gluth  
Louise Gruppen  
Vickey Holley Foster

Linda Jones  
Deborah Katz  
Deb Kirkland  
Rosalie Koenig  
Sue Kohfeldt  
David Leach  
Rebecca Logie  
Dan Long  
Laura Machida  
Ed Manning  
Kim Mobley

Ken Monash  
Eunice Moore  
Denise Murray  
Michelle Peet  
Rossi Ray-Taylor  
Gayle Richardson  
Victoria Scott Rondeau  
Katy Ryan  
Nancy Schewe  
Karen Schulte  
Derek Shelton

Joan Singer  
Sue Sinta  
Grace Sweeney  
Sandy Trosien  
Melinda Trout  
Sally Vandeven  
Barbara Wallgren  
Jeanne Weinch

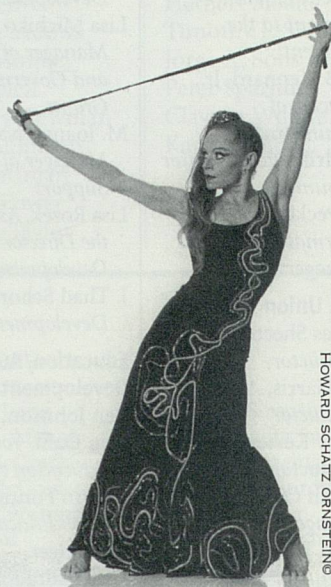
# Q: What do these performing artists have in common?



CHRIS LEE

Cynthia Phelps, principal violist with the New York Philharmonic, who has performed as soloist with orchestras around the world.

Christine Dakin, former principal dancer with Martha Graham Dance Company and internationally renowned dancer, choreographer, and teacher



HOWARD SCHATZ ORNSTEIN ©



SCOTT DOBRY

Chip Davis, Grammy-award-winning founder of popular group Mannheim Steamroller

The School of Music is proud to play a part in preparing the next generation of performing artists. To help support the School's commitment to educational excellence and the training of future artists, please contact Jeff Nearhoof, [jeffhn@umich.edu](mailto:jeffhn@umich.edu), 734-647-2035.

**A:** They all graduated from the School of Music at the University of Michigan.

UNIVERSITY MICHIGAN  
**School of Music**

# UMS services

## GENERAL INFORMATION

### Barrier-Free Entrances

For persons with disabilities, all venues have barrier-free entrances. Wheelchair locations are available on the main floor. Ushers are available for assistance.

### Listening Systems

For hearing-impaired persons, the Power Center, Mendelssohn Theatre and Detroit Opera House are equipped with infrared listening systems. Headphones may be obtained upon arrival. Please ask an usher for assistance.

### Lost and Found

For items lost at Rackham Auditorium, Trueblood Theatre, Power Center, and Mendelssohn Theatre please call University Productions at 734.763.5213. For items lost at St. Francis of Assisi Catholic Church, Michigan Theater, Crisler Arena, Pease Auditorium, Detroit Opera House and Orchestra Hall please call the UMS Production Office at 734.764.8348.

### Parking

Parking for Ann Arbor events is available in the Liberty Square (formerly Tally Hall), Church Street, Maynard Street, Thayer Street, Fletcher Street and Fourth Avenue structures for a minimal fee. Parking for Detroit events

is available in the Orchestra Hall lot, Detroit Opera House garage and People Mover lots for a minimal fee. Limited street parking is also available. Please allow enough time to park before the performance begins. UMS members at the Principal level and above receive 10 complimentary parking passes for use at the Thayer Street or Fletcher Street structures in Ann Arbor.

UMS offers valet parking service for performances in the 02/03 Choral Union series. Cars may be dropped off in front of the performance venues beginning one hour prior to performance. There is a \$10 fee for this service. UMS members at the Producer level and above are invited to use this service at no charge.

For up-to-date parking information, please see the UMS website at [www.ums.org](http://www.ums.org).

### Refreshments

Refreshments are served in the lobby during intermissions of events in the Power Center, Detroit Opera House and Orchestra Hall, and are available in the Michigan Theater. Refreshments are not allowed in the seating areas.

### Smoking Areas

University of Michigan policy forbids smoking in any public area, including the lobbies and restrooms.

# Congratulations

UNIVERSITY  
**ums**  
MUSICAL SOCIETY

For providing a century  
of great music.



Yamaha • Blüthner

KING'S  
*Keyboard House*

2333 E. Stadium • Ann Arbor  
(734) 663-3381 • 1-800-968-5464

## TICKETS

### In Person

The UMS Ticket Office and the University Productions Ticket Office have merged! Patrons are now able to purchase tickets for UMS events and School of Music events with just one phone call.

As a result of this transition, the walk-up window is conveniently located at the **League Ticket Office**, on the north end of the Michigan League building at 911 North University Avenue. The Ticket Office phone number and mailing address will remain the same.

Mon-Fri: 10am-6pm

Sat: 10am-1pm

By Phone **734.764.2538**

Outside the 734 area code, call toll-free  
**800.221.1229**

By Fax **734.647.1171**

By Internet **www.ums.org**

By Mail

**UMS Ticket Office**  
**Burton Memorial Tower**  
**881 North University Avenue**  
**Ann Arbor, MI 48109-1011**

Performance hall ticket offices open 90 minutes prior to each performance.

We are Proud Supporters  
of the  
University Musical Society



WWW.BUTZEL.COM

TEL (734)995-3110 FAX (734)995-1777

DETROIT ANN ARBOR BLOOMFIELD HILLS LANSING HOLLAND  
BOCA RATON NAPLES PALM BEACH GARDENS

### Returns

If you are unable to attend a concert for which you have purchased tickets, you may turn in your tickets up to 15 minutes before curtain time by calling the Ticket Office. Refunds are not available; however, you will be given a receipt for an income tax deduction. Please note that ticket returns do not count toward UMS membership.

## GROUP TICKETS

The group sales program has grown incredibly in recent years, and our success is a direct result of the wonderful leaders who organize their friends, families, congregations, students, and co-workers and bring them to one of our events.

Last season over 10,000 people came to UMS events as part of a group, and they saved over \$50,000 on some of the most popular events in our season. Don't miss our current season, featuring world-renowned artists such as Altan, the Boston Pops, Audra McDonald, Herbie Hancock, and many more, including our special Brazil Series, all at special group rates!

Imagine yourself surrounded by ten or more of your closest pals as they thank you for getting great seats to the hottest shows in town. It's as easy as picking up the phone and calling Laurel Hufano, Group Sales Coordinator, at 734.763.3100. Don't wait—rally your friends and reserve your seats today!

## DISCOUNTED STUDENT TICKETS

**Did you know?** Since 1990, students have purchased over 122,000 tickets and have saved more than \$1.8 million through special UMS student programs! UMS's commitment to affordable student tickets has permitted thousands to see some of the most important, impressive and influential artists from around the world. For the 02/03 season, students may purchase discounted tickets to UMS events in three ways:

1. Each semester, UMS holds a Half-Price Student Ticket Sale, at which students can purchase tickets for all UMS events for 50% off the published price. This extremely popular event draws hundreds of students every fall—last year, students saved nearly \$100,000 by purchasing tickets at the Half-Price

Student Ticket Sale! Be sure to get there early as some performances have limited numbers of discounted tickets available.

2. Students may purchase up to two \$10 Rush Tickets the day of the performance at the UMS Ticket Office, or 50% off at the door, subject to availability.

3. Students may purchase the UMS Card, a pre-paid punch card that allows students to pay up front (\$50 for 5 punches, \$100 for 11 punches) and use the card to purchase Rush Tickets during the 02/03 season. Incoming freshman and transfer students can purchase the UMS Card with the added perk of buying Rush Tickets two weeks in advance, subject to availability.

## GIFT CERTIFICATES

Looking for that perfect meaningful gift that speaks volumes about your taste? Tired of giving flowers, ties or jewelry? Give a UMS Gift Certificate! Available in any amount and redeemable for any of more than eighty events throughout our season, wrapped and delivered with your personal message, the UMS Gift Certificate is ideal for weddings, birthdays, Christmas, Hanukkah, Mother's and Father's Days, or even as a housewarming present when new friends move to town.



In an effort to help reduce distracting noises and enhance the theater-going experience, Pfizer Inc is providing complimentary Halls® Mentho Lyptus® cough suppressant tablets to patrons attending UMS performances throughout our 02/03 season.

Bring the best to people

because it enriches their lives.


At Forest Health Services, we're committed to providing the best in specialty healthcare and helping our patients begin a whole new life.

We're proud to support the University Musical Society in bringing the finest in music and the performing arts to southeast Michigan. We hope you enjoy this season's offerings.

 **FOREST**  
HEALTH SERVICES®



**TOURS**  
ALDEN B. DOW HOME & STUDIO  
A National Historic Landmark  
Midland, Michigan



"gardens never end  
and buildings never begin."

**TOURS**

Tours:  
Every Friday 10 a.m. & 2 p.m.  
Every Saturday 10 a.m.

Reservations required  
Toll free 866.315 POST

[www.abdow.org](http://www.abdow.org)  
[info@abdow.org](mailto:info@abdow.org)

Prearranged group tours available

A B C D  
E F G H  
I J K L  
M N O P

**WE ARE Q.** We help businesses and organizations rise above the crowd by creating Web sites, marketing materials, and brand identities that perform clearly, memorably, and of course, in concert.

[www.qltd.com/q](http://www.qltd.com/q)



## THE UMS CARD

UMS and the following businesses thank you for your generous support by providing you with discounted products and services through the UMS Card, a privilege for subscribers and donors of \$100 or more. Patronize these businesses often and enjoy the quality products and services they provide.

Amadeus Cafe  
Ann Arbor Art Center  
Ann Arbor Automotive  
Back Alley Gourmet  
Bivouac  
The Blue Nile  
Restaurant  
Bodywise Therapeutic  
Massage  
Café Marie  
Dough Boys Bakery  
Gandy Dancer  
Great Harvest  
John's Pack and Ship  
Kerrytown Bistro  
King's Keyboard  
House

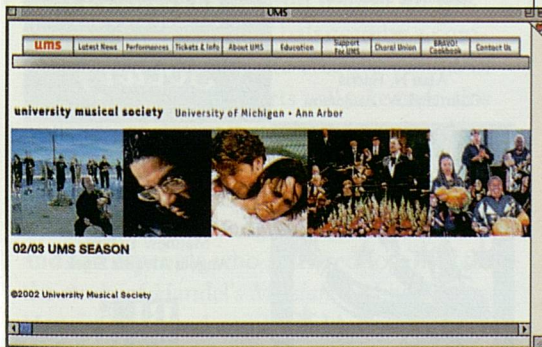
Le Dog  
Michigan Car Services,  
Inc. and Airport  
Sedan, LTD  
Nicola's Books, Little  
Professor Book Co.  
Paesano's Restaurant  
Randy Parrish Fine  
Framing  
Ritz Camera One Hour  
Photo  
Shaman Drum  
Bookshop  
Washington Street  
Gallery

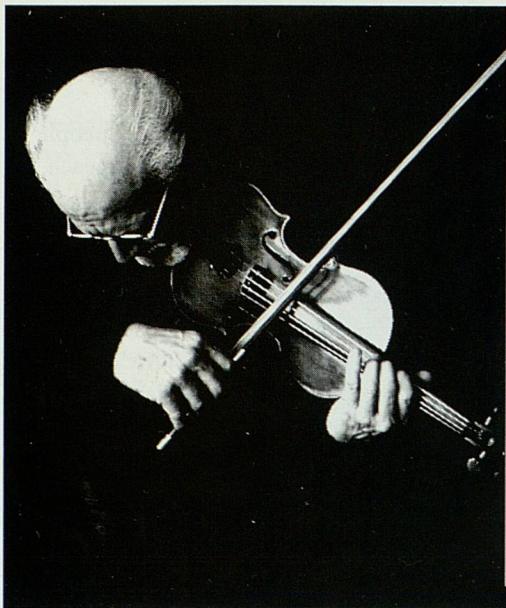
## WWW.UMS.ORG

Join the thousands of savvy people who log onto [www.ums.org](http://www.ums.org) each month!

Why should *you* log onto [www.ums.org](http://www.ums.org)?

- **Tickets** Forget about waiting in long ticket lines—order your tickets to UMS performances online! And now you'll know your specific seat location before you buy online.
- **CyberSavers** Special weekly discounts appearing every Tuesday, only available by ordering over the Web.
- **Information** Wondering about UMS's history, event logistics, or volunteer opportunities? Find all this and more.
- **Program Notes and Artist Bios** Your online source for performance programs and in-depth artist information. Learn about the artists and repertoire before you enter the hall!
- **Sound Clips** Listen to recordings from UMS performers online before the concert.
- **Education Events** Up-to-date information detailing educational opportunities surrounding each UMS performance.
- **Development Events** Current information on UMS Special Events and activities outside of the concert hall. Find details on how to support UMS and the arts online!
- **BRAVO! Cookbook** Order your UMS hardcover coffee-table cookbook featuring more than 250 recipes from UMS artists, alumni and friends, as well as historic photos from the UMS archives.
- **Choral Union** Audition information and performance schedules for the UMS Choral Union.





**We support the  
arts with more  
than just applause.**

The arts enrich our lives in ways that go beyond the spoken word or musical note. They make us laugh. They make us cry. They lift our spirits and bring enjoyment to our lives. The arts and cultural opportunities so vital to this community are also important to us. That's why Comerica supports the arts. And we applaud those who join us in making investments that enrich peoples lives.

**Comerica**

**We listen. We understand. We make it work.™**



Comerica Bank. Member FDIC. Equal Opportunity Lender.

[www.comerica.com](http://www.comerica.com)

*Designing & building fine gardens  
in Ann Arbor since 1959.*



**FRALEIGHS LANDSCAPE NURSERY**

8600 Jackson Road, Dexter  
(734)426-5067

**BODMAN, LONGLEY & DAHLING LLP®**

*Attorneys Resident in our  
Ann Arbor Office:*

John S. Dobson  
Mark W. Griffin  
Randolph S. Perry  
James J. Walsh  
Harvey W. Berman  
Jerold Lax  
Susan M. Kornfield  
Sandra L. Sorini  
Stephen K. Postema  
Timothy R. Damschroder  
Alan N. Harris  
Courtland W. Anderson

*Proud to  
Support the  
University  
Musical  
Society*

Scott E. Munzel  
Emily M. Kellndorfer  
David M. Walker  
Julie A. Lawson  
Matthew T. Jane  
Angela Alvarez Sujek



110 Miller, Suite 300  
Ann Arbor, Michigan 48104  
(734) 761-3780

[www.bodmanlongley.com](http://www.bodmanlongley.com)



**We Bring Furniture  
Back to Life!**



- Repairs
- Stripping
- Reveneering
- Custom Refinishing
- Restoration
- Mirror Resilvering

Free In-Home Estimates  
Pick-up & Delivery

**Littlefield & Sons  
Furniture Service**

111 Enterprise, Ann Arbor  
(new Westside Shop!) • 668-1700



# UMSannals

## UMS HISTORY

**T**hrough an uncompromising commitment to Presentation, Education, and the Creation of new work, the University Musical Society (UMS) serves Michigan audiences by bringing to our community an ongoing series of world-class artists, who represent the diverse spectrum of today's vigorous and exciting live performing arts world. Over its 123 years, strong leadership coupled with a devoted community has placed UMS in a league of internationally-recognized performing arts presenters. Indeed, *Musical America* selected UMS as one of the five most influential arts presenters in the United States in 1999. Today, the UMS seasonal program is a reflection of a thoughtful respect for this rich and varied history, balanced by a commitment to dynamic and creative visions of where the performing arts will take us in this millennium. Every day UMS seeks to cultivate, nurture, and stimulate public interest and participation in every facet of the live arts.

UMS grew from a group of local university and townspeople who gathered together for the study of Handel's *Messiah*. Led by Professor Henry Frieze and conducted by Professor Calvin Cady, the group assumed the name The Choral Union. Their first performance of Handel's *Messiah* was in December of 1879, and this glorious oratorio has since been performed by the UMS Choral Union annually.

As a great number of Choral Union members also belonged to the University, the University Musical Society was established in December 1880. UMS included the Choral Union and University Orchestra, and throughout the year presented a series of concerts featuring local and visiting artists and ensembles.

Since that first season in 1880, UMS has expanded greatly and now presents the very best from the full spectrum of the performing arts—internationally renowned recitalists and orchestras, dance and chamber ensembles, jazz and world music performers, and opera and theatre. Through educational endeavors, commissioning of new works, youth programs, artist residencies and other collaborative projects, UMS has maintained its reputation for quality, artistic distinction and innovation. UMS now hosts approximately 90 performances and more than 150 educational events each season. UMS has flourished with the support of a generous community that this year gathers in 11 diverse venues in Ann Arbor, Ypsilanti, and Detroit.

While proudly affiliated with the University of Michigan, housed on the Ann Arbor campus, and a regular collaborator with many University units, UMS is a separate not-for-profit organization that supports itself from ticket sales, corporate and individual contributions, foundation and government grants, special project support from UM, and endowment income.

CHELSEA



*Musical Celebrations*

*Presenting the nation's finest concert artists in the historic village of Chelsea*

121 E. Middle St., Chelsea  
music.chelseafestivals.com  
734.475.7050

*Independent Thinking.  
Institutional Strength.™*

NATIONAL CITY IS PROUD  
TO PLAY A PART IN SUPPORTING  
THE ARTS IN OUR COMMUNITY.



PRIVATE INVESTMENT ADVISORS

PRIVATE  
CLIENT  
GROUP

National City pia.national-city.com • ©2008, National City Corporation®

*coffee before*

*Sweetwaters*  
C A F E 

*dessert after*

123 W WASHINGTON - ANN ARBOR - 734 769-2331

ON THE CORNER OF ASHLEY & WASHINGTON



107 S ANN ARBOR ST - SALINE - 734 944-4054

IN MURPHY'S CROSSING

# Radio doesn't get any better than this...

Classical music.  
Reliable news from NPR.  
Great weekend entertainment.

## WGTE FM 91.3



## UMS CHORAL UNION

Throughout its 123-year history, the UMS Choral Union has performed with many of the world's distinguished orchestras and conductors.

Based in Ann Arbor under the aegis of the University Musical Society, the 150-voice Choral Union is known for its definitive performances of large-scale works for chorus and orchestra. Nine years ago, the Choral Union further enriched that tradition when it began appearing regularly with the Detroit Symphony Orchestra (DSO). Among other works, the chorus has joined the DSO in Orchestra Hall and at Meadowbrook for subscription performances of Stravinsky's *Symphony of Psalms*, John Adams's *Harmonium*, Beethoven's *Symphony No. 9*, Orff's *Carmina Burana*, Ravel's *Daphnis et Chloé* and Brahms's *Ein deutsches Requiem*, and has recorded Tchaikovsky's *The Snow Maiden* with the orchestra for Chandos, Ltd.

In 1995, the Choral Union began accepting invitations to appear with other major regional orchestras, and soon added Britten's *War Requiem*, Elgar's *The Dream of Gerontius*, the Berlioz *Requiem* and other masterworks to its repertoire.

The Choral Union will open its upcoming season with performances of Mahler's *Symphony No. 3* with the DSO, followed by a performance of Beethoven's *Symphony No. 9* with the Ann Arbor Symphony Orchestra. In December the chorus will present its 124th series of annual performances of *Messiah*, using the rarely-heard Mozart revision of Handel's great work. The Choral Union's season will conclude in March with a pair of magnificent French choral works: Honegger's *King David*, accompanied by members of the Greater Lansing Symphony Orchestra, and Duruflé's mystical *Requiem*, accompanied by organist Janice Beck.

The Choral Union's 01/02 season included performances of *Messiah*, Ives's *Symphony No. 4* with Michael Tilson Thomas and the San Francisco Symphony Orchestra and Brahms's *Ein deutsches Requiem* with Thomas Sheets conducting the Ann Arbor Symphony Orchestra, all in Hill Auditorium. To conclude its 123rd season, the Choral Union joined the DSO and Neeme Järvi in three critically acclaimed performances of Beethoven's *Missa Solemnis*.

During the 2000/2001 season, the UMS Choral Union appeared in two series with the DSO. The season culminated in a performance of Berlioz's *Requiem* with the Greater Lansing Symphony Orchestra, along with tenor Stanford Olsen and members of the UM School of Music Symphony Band in Hill Auditorium.

The Choral Union is a talent pool capable of performing choral music of every genre. In addition to choral masterworks, the Choral Union has performed Gershwin's *Porgy and Bess* with the Birmingham-Bloomfield Symphony Orchestra, and other musical theatre favorites with Erich Kunzel and the DSO at Meadowbrook. The 72-voice Concert Choir drawn from the full chorus has performed Duruflé's *Requiem*, the Langlais *Messe Solennelle*, and the Mozart *Requiem*. Recent programs by the Choral Union's 36-voice Chamber Chorale include "Creativity in Later Life," a program of late works by nine composers of all historical periods; a joint appearance with the Gabrieli Consort and Players; a performance of Bach's *Magnificat*, and a recent joint performance with the Tallis Scholars.

Participation in the Choral Union remains open to all by audition. Composed of singers from Michigan, Ohio and Canada, members of the Choral Union share one common passion—a love of the choral art. For more information about membership in the UMS Choral Union, e-mail [choralunion@umich.edu](mailto:choralunion@umich.edu) or call 734.763.8997.

## VENUES / BURTON MEMORIAL TOWER

*With the 18-month closing of Hill Auditorium for renovations, the 02/03 UMS season will include performances by the world's celebrated music, theater and dance artists in 11 venues in three cities: Ann Arbor, Ypsilanti and Detroit.*

### Ann Arbor Venues

#### Hill Auditorium

The 18-month, \$38.6-million dollar renovation to Hill Auditorium began on May 13, 2002 under the direction of Albert Kahn Associates, Inc., and historic preservation architects Quinn Evans/Architects. Hill was first opened to Michigan audiences in 1913 and this current renovation project will update all of its infrastructure systems and restore much of the interior décor to its original splendor.

Exterior renovations will rebuild brick paving and stone retaining walls, restore the south entrance plaza, rework the west barrier-free ramp and loading dock, and improve the landscaping which surrounds the building.

Interior renovations will create additional restrooms, improve audience circulation by providing elevators, replace main-floor seating to increase patron comfort, introduce barrier-free seating and stage access, replace audio-visual systems, and completely replace all mechanical and electrical infrastructure systems for heating, ventilation, and air conditioning.

Upon reopening in January 2004, Hill Auditorium will decrease in seating capacity from 4,169 to 3,710.

#### Crisler Arena

Crisler Arena, home to the Michigan Wolverine basketball teams, stands as a tribute to the great Herbert O. "Fritz" Crisler, Michigan's third all-time winning football coach. Crisler served 10 years as Michigan's football coach (1938-1947) and 27 years as athletic director (1941-1968) of the University. The arena was designed by Dan Dworksky under the architectural firm of K.C. Black & C.L. Dworsky and opened in 1968. The event facility has a capacity of 13,609.

While serving as a site of Big Ten Conference championship events, Crisler has also played host to popular acts such as Pearl Jam, Bill Cosby, the Grateful Dead, and even Elvis Presley during his final concert tour.

#### Lydia Mendelssohn Theatre

Notwithstanding an isolated effort to establish a chamber music series by faculty and students in 1938, UMS regularly began presenting artists in the Lydia Mendelssohn Theatre in 1993, when Eartha Kitt and Barbara Cook graced the stage of the intimate 658-seat theatre for the 100th May Festival's Cabaret Ball. The superlative Mendelssohn Theatre has been the home of the UMS Song Recital series for the past eight years.

#### Michigan Theater

The historic Michigan Theater opened January 5, 1928 at the peak of the vaudeville/movie palace era. Designed by Maurice Finkel, the 1,710-seat theater cost around \$600,000 when it was first built. As was the custom of the day, the theater was equipped to host both film and live stage events, with a full-size stage, dressing rooms, an orchestra pit, and the Barton Theater Organ. At its opening the theater was acclaimed as the best of its kind in the country. Since 1979, the theater has been operated by the not-for-profit Michigan Theater Foundation.

In the fall of 1999, the Michigan Theater opened a new 200-seat screening room addition, which also included expanded restroom facilities for the historic theater. The gracious facade and entry vestibule was restored in 2000, and balcony restorations have been completed.

### Power Center for the Performing Arts

**T**he Power Center for the Performing Arts grew out of a realization that the University of Michigan had no adequate proscenium-stage theatre for the performing arts. Hill Auditorium was too massive and technically limited for most productions, and the Lydia Mendelssohn Theatre too small. The Power Center was designed to supply this missing link in design and seating capacity.

In 1963, Eugene and Sadye Power, together with their son Philip, wished to make a major gift to the University, and amidst a list of University priorities was mentioned "a new theatre." The Powers were immediately interested, realizing that state and federal government were unlikely to provide financial support for the construction of a new theatre.

No seat in the Power Center is more than 72 feet from the stage. The lobby of the Power Center features two hand-woven tapestries: *Modern Tapestry* by Roy Lichtenstein and *Volutes* by Pablo Picasso.

### Rackham Auditorium

**S**ixty years ago, chamber music concerts in Ann Arbor were a relative rarity, presented in an assortment of venues including University Hall (the precursor to Hill Auditorium), Hill Auditorium, and Newberry Hall, the current home of the Kelsey Museum. When Horace H. Rackham, a Detroit lawyer who believed strongly in the importance of the study of human history and human thought, died in 1933, his will established the Horace H. Rackham and Mary A. Rackham Fund, which subsequently awarded the University of Michigan the funds not only to build the Horace H. Rackham Graduate School, which

houses the 1,129-seat Rackham Auditorium, but also to establish a \$4-million endowment to further the development of graduate studies.

### St. Francis of Assisi Catholic Church

**I**n 1950, Father Leon Kennedy was appointed pastor of a new parish in Ann Arbor. Seventeen years later ground was broken to build a permanent church building, and on March 19, 1969 John Cardinal Dearden dedicated the new St. Francis of Assisi Church. Father James McDougal was appointed pastor in 1997.

St. Francis of Assisi Catholic Church has grown from 248 families when it first started in 1950 to more than 2,800 today. The present church seats 900 people and has ample free parking. In 1994 St. Francis purchased a splendid three manual "mechanical action" organ with 34 stops and 45 ranks, built and installed by Orgues Letourneau from Saint Hyacinthe, Quebec. Through dedication, a commitment to superb liturgical music and a vision to the future, the parish improved the acoustics of the church building, and the reverberant sanctuary has made the church a gathering place for the enjoyment and contemplation of sacred *a cappella* choral music and early music ensembles.

### Ypsilanti Venues

#### EMU Convocation Center

**A**n exciting new era in EMU athletics was set in motion in the fall of 1998 with the opening of the \$29.6-million Convocation Center. The Barton-Malow Company along with the architectural firm Rossetti Associates of Birmingham/The Argos Group began construction on the campus facility in 1996. The Convocation Center opened its doors on December 9, 1998 with a maximum seating capacity of 9,510 for center-stage entertainment events.

## Pease Auditorium

**B**uilt in 1914, Pease Auditorium was renovated in 1995. Earlier this year, the restoration of the Aeolian/Skinner pipe organ was completed and the interior of the auditorium was refurbished. Pease Auditorium can seat up to a total of 1,541 concertgoers.

## Detroit Venues

### Detroit Opera House

**T**he Detroit Opera House opened in April of 1996 following an extensive renovation by Michigan Opera Theatre. Boasting a 75,000-square-foot stage house (the largest stage between New York and Chicago), an orchestra pit large enough to accommodate 100 musicians and an acoustical virtue to rival the world's great opera houses, the 2,735-seat facility has rapidly become one of the most viable and coveted theatres in the nation. As the home of Michigan Opera Theatre's grand opera season and dance series, and through quality programming, partnerships and educational initiatives, the Detroit Opera House plays a vital role in enriching the lives of the community.

### Orchestra Hall

**O**rchestra Hall was dedicated in 1919 as the new home of the Detroit Symphony Orchestra. In 1939, after the depression, the orchestra moved to the Masonic Temple Theatre and the facility was renamed the Paradise Theatre. The Paradise became one of the nation's most famous stages for African-American Jazz musicians (1941-1951).

In the late 1950s, the building was abandoned and fell into disrepair. In 1964, it was headed for the wrecking ball, but local citizens rallied to save the great concert hall. DSO musicians and volunteers founded Save Orchestra Hall, Inc., to marshal citizen support for the retention and restoration of the building to its former architectural grandeur.

In September 1989 the DSO returned to Orchestra Hall, now its permanent home, capping a multi-million-dollar restoration effort.

In 1996, the Detroit Symphony Orchestra launched Orchestra Place, an \$80-million development project on eight acres of land surrounding Orchestra Hall.

### Burton Memorial Tower

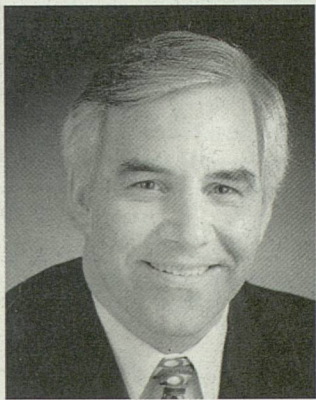
**S**een from miles away, Burton Memorial Tower is one of the most well-known University of Michigan and Ann Arbor landmarks. Completed in 1935 and designed by Albert Kahn, the 10-story tower is built of Indiana limestone with a height of 212 feet.

UMS administrative offices returned to our familiar home at Burton Memorial Tower in August 2001, following a year of significant renovations to the University landmark.

This upcoming season marks the second year of the merger of the UMS Ticket Office and the University Productions Ticket Office. Due to this new partnership, the UMS walk-up ticket window is now conveniently located at the **Michigan League Ticket Office**, on the north end of the Michigan League building at 911 North University Avenue. The UMS Ticket Office phone number and mailing address remains the same.

*Dear Friends,*

**W**elcome to this special holiday concert of the Boston Pops Esplanade Orchestra. Thank you for coming. Today's concert represents the Boston Pops's seventh appearance under University Musical Society auspices—the first in 40 years—and UMS's first-ever concert at Crisler Arena. The previous six appearances by what was then called the Boston Pops Tour Orchestra were held between 1953–1962 in Hill Auditorium with Arthur Fielder as conductor.



We are grateful to University of Michigan Athletic Director Bill Martin, Executive Associate Director Mike Stevenson, and the entire Athletic Department for their outstanding cooperation and support in enabling this concert to be held at Crisler Arena. While this event represents the first concert venture between Athletics and UMS, we are in conversation about other events we might do together. Stay tuned!

We invite you to attend other exciting events during this 124th UMS season. For more information, pick up a UMS brochure in the concourse, turn to page 29 of the glossy pages of your program, or go to our website at [www.ums.org](http://www.ums.org).

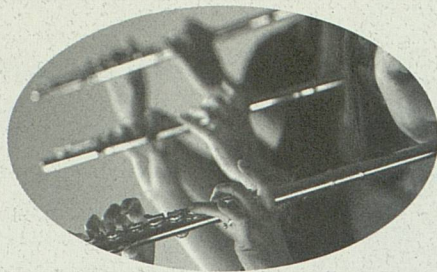
Since this type of event is a first for us, we are very interested in your feedback. Let us know about your experience today. Feel free to send me an e-mail message at [kenfisch@umich.edu](mailto:kenfisch@umich.edu) or call me at 734.647.1174.

Enjoy the concert!

A handwritten signature in cursive script that reads "Ken Fischer". The signature is written in dark ink and is positioned above the printed name.

Kenneth C. Fischer  
*UMS President*

*We love where we live.*



*Pfizer is proud to support the  
University Musical Society  
and Boston Pops Esplanade.*

*We're Pfizer. Improvements in the quality of life are  
the goals of the dedicated colleagues at Ann Arbor  
Laboratories, who have made dramatic strides in  
the treatment of heart disease, cancer, diabetes,  
inflammatory diseases, infections, and diseases of  
the central nervous system.*



*Life is our life's work.*

[www.pfizer.com](http://www.pfizer.com)

COMMUNITY

## Vienna Philharmonic

Nikolaus Harnoncourt conductor

Thu **2/27** 8 pm

Detroit Opera House • Detroit

The Vienna Philharmonic makes its first appearance in the metro-Detroit region since Bernstein conducted the venerated ensemble at Hill Auditorium in 1988. Nikolaus Harnoncourt conducts the Vienna Philharmonic in a special performance of two staples of the repertoire: Schubert's Symphony No. 4 and Dvořák's "New World" Symphony, originally written to celebrate the 400th anniversary of Columbus's encounter with the Americas.

### PROGRAM

Schubert      Symphony No. 4 (1816)

Dvořák        Symphony No. 9 ("New World") (1893)

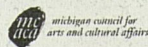
This performance is co-presented with the **University of Michigan**.

Media Sponsor **WGTE 91.3 FM**.



**734.764.2538** [www.ums.org](http://www.ums.org)

outside the 734 area code, call toll-free 800.221.1229





UMS  
*and*  
Pfizer Global  
Research and  
Development,  
Ann Arbor  
Laboratories  
*present*

# The Boston Pops Esplanade Orchestra

KEITH LOCKHART, *Conductor*

John Williams, *Laureate Conductor*

Bruce Hangen, *Principal Pops Guest Conductor*

*with*

The University Singers of California State University Fullerton

John Alexander, *Music Director and Conductor*

Kathleen Brett, *Soprano*

Jeff Daniels, *Guest Narrator*

Randall Pittman, *Guest Conductor*

---

## Program

Sunday Evening, December 8 at 6:00

Crisler Arena • Ann Arbor

THE 2002 FIDELITY INVESTMENTS

## *Boston Pops Holiday Tour*

Ralph Vaughan Williams **Prologue,**  
from *Hodie*

George Frideric Handel, **Hallelujah Chorus,**  
Arr. Wolfgang Amadeus  
Mozart from *Messiah*

Traditional, **Trois pour Noël**  
Arr. Don Sebesky Il est né—Fum, Fum, Fum—Quittez pasteurs

MS. BRETT

*Adolphe Adam,  
Arr. Alexander Courage*

## **O Holy Night**

Ms. BRETT

*Ottorino Respighi*

## **The Adoration of the Magi, from *Three Botticelli Pictures***

*Traditional Spiritual,  
Arr. John Rutter*

## **Go Tell It On the Mountain**

*Arr. Sebesky*

## **A Christmas Scherzo**

*Pietro A. Yon,  
Arr. Angela Morley*

## **Gesù Bambino**

Ms. BRETT

*Handel,  
Arr. Randol Bass*

## **Joy to the World! A Fanfare for Christmas Day**

### INTERMISSION

*John Williams/  
Leslie Bricusse*

## **Merry Christmas, Merry Christmas, from *Home Alone 2***

*Traditional,  
Arr. K. Lee Scott*

## **Round the Glory Manger**

JEFFREY MISTRI, *Conducting*

*Arr. Sammy Nestico*

## **Kije Takes a Ride (after Prokofiev)**

*Jester Hairston,  
Arr. Patrick Hollenbeck*

## **Mary's Little Boy Child**

*Jule Styne/Sammy Cahn,  
Arr. Morley*

## **The Christmas Waltz**

Ms. BRETT

*Irving Berlin,  
Arr. Jack Mason/Courage*

## **White Christmas** in memory of Rosemary Clooney

Ms. BRETT

*Arr. Hollenbeck*

### **Cajun Christmas**

Rockin' Around the Christmas Tree—  
(Must Have Been Ol') Santa Claus—Jingle Bell Rock

*Arr. Joe Reisman*

### **A Visit from St. Nicholas** ('Twas the Night Before Christmas) (Text by Clement C. Moore)

MR. DANIELS

*Leroy Anderson*

### **Sleigh Ride**

MR. PITTMAN

*President of Forest Health Services and series sponsor  
of the 124th Annual Choral Union Series*

*Arr. Reisman*

### **A Merry Little Sing-Along**

Rudolph the Red-Nosed Reindeer—Have Yourself a  
Merry Little Christmas—Let It Snow! Let It Snow! Let  
It Snow!—The Christmas Song—Winter Wonderland—  
Jingle Bells

37th Performance  
of the 124th Season

124th Annual  
Choral Union Series

This performance is sponsored by Pfizer Global Research and Development, Ann Arbor Laboratories.

Special thanks to Dr. David Canter of Pfizer Global Research and Development for his generous support of the University Musical Society.

This performance is presented with support from the Catherine S. Arcure/Herbert E. Sloan Endowment Fund.

The 124th Annual Choral Union Series is sponsored by Forest Health Services.

Special thanks to Randall and Mary Pittman for their continued and generous support of the University Musical Society, both personally and through Forest Health Services.

Additional support provided by media sponsor WGTE 91.3 FM.

The Steinway piano used in this evening's performance is made possible by Mary and William Palmer and Hammell Music, Inc., Livonia, Michigan.

The Boston Pops Orchestra may be heard on RCA Victor, Sony Classical, and Philips Records.

The Boston Pops Esplanade Orchestra appears by arrangement with Columbia Artists Management, Inc.

*The photographing or sound recording of this concert or possession of any device for such photographing or sound recording is prohibited.*

## A Merry Little Sing-Along

### Rudolph The Red-Nosed Reindeer

*Johnny Marks*

(Marks)

Rudolph, the red-nosed reindeer,  
Had a very shiny nose.  
And if you ever saw it,  
You would even say it glows.

All of the other reindeer  
Used to laugh and call him names.  
They never let poor Rudolph  
Join in any reindeer games.

Then one foggy Christmas Eve,  
Santa came to say:  
"Rudolph, with your nose so bright,  
Won't you guide my sleigh tonight?"

Then how the reindeer loved him,  
As they shouted out with glee:  
"Rudolph, the red-nosed reindeer,  
You'll go down in history!"

### Have Yourself A Merry Little Christmas

*Hugh Martin and Ralph Blane*

(Martin and Blane)

Have yourself a merry little Christmas, let your  
heart be light;  
From now on, our troubles will be out of sight.  
Have yourself a merry little Christmas, make the  
Yuletide gay;  
From now on, our troubles will be miles away.

Here we are as in olden days,  
Happy golden days of yore.  
Faithful friends who are dear to us  
Gather near to us once more.

Through the years we all will be together,  
if the Fates allow;  
Hang a shining star upon the highest bough,  
And have yourself a merry little Christmas now.

### Let It Snow! Let It Snow! Let It Snow!

*Jule Styne*

(Sammy Cahn)

Oh! the weather outside is frightful,  
But the fire is so delightful,  
And since we've no place to go,  
Let it snow! Let it snow! Let it snow!  
It doesn't show signs of stopping,  
And I brought some corn for popping;  
The lights are turned 'way down low.  
Let it snow! Let it snow! Let it snow!

When we finally kiss goodnight,  
How I'll hate going out in the storm!  
But if you'll really hold me tight,  
All the way home I'll be warm.

The fire is slowly dying,  
And my dear, we're still good-bye-ing.  
But as long as you love me so,  
Let it snow! Let it snow! Let it snow!

### The Christmas Song

*Mel Tormé and Robert Wells*

(Tormé and Wells)

Chestnuts roasting on an open fire,  
Jack Frost nipping at your nose,  
Yuletide carols being sung by a choir,  
And folks dressed up like Eskimos.

Ev'rybody knows a turkey and some mistletoe  
Help to make the season bright.  
Tiny tots with their eyes all a-glow  
Will find it hard to sleep tonight.

They know that Santa's on his way,  
He's loaded lots of toys and goodies on his sleigh.  
And ev'ry mother's child is gonna spy  
To see if reindeer really know how to fly.

And so I'm offering this simple phrase  
To kids from one to ninety-two,  
Al-tho' it's been said many times, many ways:  
Merry Christmas to you.

## Winter Wonderland

Felix Bernard  
(Dick Smith)

Sleigh-bells ring, are you list'nin'?  
In the lane, snow is glist'nin'.  
A beautiful sight, we're happy tonight,  
Walkin' in a winter wonderland!

Gone away is the blue-bird,  
Here to stay is a new bird.  
He sings a love song, as we go along,  
Walkin' in a winter wonderland!

In the meadow we can build a snowman,  
Then pretend that he is Parson Brown:  
He'll say, "Are you married?" We'll say, "No, man!  
But you can do the job when you're in town" —

Later on, we'll conspire,  
As we dream by the fire,  
To face unafraid, the plans that we made,  
Walkin' in a winter wonderland!

## Jingle Bells

J. S. Pierpont  
(Pierpont)

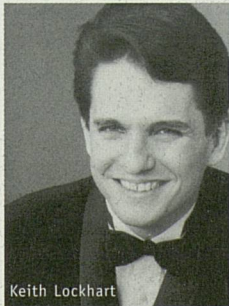
Dashing thro' the snow, in a one-horse open sleigh,  
O'er the fields we go, laughing all the way;  
Bells on bobtail ring, making spirits bright;  
What fun it is to ride and sing  
A sleigh-ing song to-night. — Oh!

Jingle bells, jingle bells, jingle all the way!  
Oh what fun it is to ride  
In a one-horse open sleigh-eigh!  
Jingle bells, jingle bells, jingle all the way!  
Oh what fun it is to ride  
In a one-horse open sleigh.

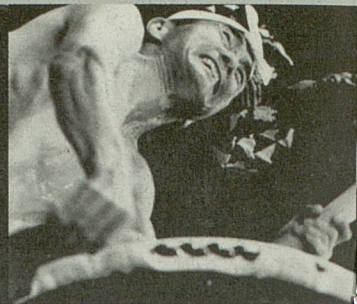
Oh what fun it is to ride  
In a one — horse o — pen sleigh!

In February 1995 **Keith Lockhart** was named 20th conductor of the Boston Pops Orchestra since its founding in 1885. With his appointment to the position of Boston Pops Conductor, Mr. Lockhart succeeded John Williams, who held that position from 1980 to 1993. Named Boston Pops conductor at age 35, Mr. Lockhart is only the third conductor to lead the orchestra since 1930, when Arthur

Fiedler began his unprecedented 50 years as conductor of the orchestra. Now in his eighth season as conductor of the Boston Pops, Keith Lockhart has maintained a busy schedule. He has conducted more than 500 con-



certs and made 49 television shows, including 31 new programs for PBS's *Evening at Pops*, the annual *Pops Goes The Fourth!*, produced by WCVB-TV 5 in Boston and shown nationally on A&E, and *Holiday at Pops*, also broadcast on A&E. Mr. Lockhart has also led two Boston Pops performances at Carnegie Hall, 17 national tours, and three overseas tours of Japan and Korea. Under Mr. Lockhart's direction, the orchestra has broadened its touring activities, performing to enthusiastic audiences in concert halls and sports arenas across the country. In February 2002, he led the Boston Pops in the pre-game show of Super Bowl XXXVI at the Louisiana Superdome in New Orleans, marking the first time an orchestra was featured in performance during a Super Bowl. In July 2002, Mr. Lockhart took the Boston Pops Esplanade Orchestra to Japan for the third time in his tenure, and followed that



**Sweet Honey in the Rock with  
Toshi Reagon and Big Lovely**

Fri **1/10** 8 pm

Michigan Theater • Ann Arbor

**Bill T. Jones/ Arnie Zane Dance  
Company with the Chamber Music  
Society of Lincoln Center**

Sat **1/11** – Sun **1/12**

Power Center • Ann Arbor

UMS/UM CO-COMMISSION!

***blessing the boats***

A solo performance written and conceived by  
Sekou Sundiata

Fri **1/17** – Sun **1/19**

Trueblood Theater • Ann Arbor

**Audra McDonald and Trio**

Sun **1/19** 7 pm

Michigan Theater • Ann Arbor

**Sekou Sundiata and Band**

Opening Act: **The Black Bottom Collective**

Mon **1/20** 8 pm

Michigan Theater • Ann Arbor

**Voices of Brazil** featuring **Ivan Lins,  
Ed Motta, João Bosco, Leila Pinheiro  
and Zelia Duncan**

Fri **1/31** 8 pm

Michigan Theater • Ann Arbor

**Egberto Gismonti**

Sat **2/1** 8 pm

Michigan Theater • Ann Arbor

**Vienna: Lusthaus (revisited)**

Fri **2/7** – Sat **2/8**

Power Center • Ann Arbor

**Ying Quartet**

Sun **2/9** 4 pm

Rackham Auditorium • Ann Arbor

**Dave Holland Quintet  
and New York Big Band**

Dave Holland bass

Robin Eubanks trombone

Chris Potter saxophones

Steve Nelson vibraphone & marimba

Billy Kilson drums

Sat **2/15** 8 pm

Michigan Theater • Ann Arbor

**Eos Orchestra**

***The Celluloid Copland:***

***Copland's Music for Movies***

Jonathan Sheffer conductor

Sun **2/16** 4 pm

Michigan Theater • Ann Arbor

**Vienna Philharmonic**

Nikolaus Harnoncourt conductor

Thu **2/27** 8 pm

Detroit Opera House • Detroit

**Royal Shakespeare Company**

**Shakespeare's *The Merry Wives of Windsor***

Rachel Kavanaugh director

Sat **3/1** – Sun **3/9**

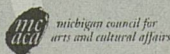
Power Center • Ann Arbor



**ums 734 764-2538** [www.ums.org](http://www.ums.org)

outside the 734 area code, call toll-free 800 221-1229

HOLIDAY HOURS: TICKET OFFICES CLOSES TUESDAY, DECEMBER 24 AT 1 PM AND REOPENS THURSDAY, JANUARY 2 AT 10 AM.



# 02/03 UMS WINTER SEASON



## Royal Shakespeare Company

### Shakespeare's *Coriolanus*

David Farr director

Sun **3/2** – Sat **3/8**

Power Center • Ann Arbor

## Royal Shakespeare Company

### Salman Rushdie's *Midnight's Children*

A new dramatization by Salman Rushdie,  
Simon Reade, and Tim Supple

Wed **3/12** – Sun **3/16**

Power Center • Ann Arbor

## Alban Berg Quartet

Mon **3/3** 8 pm

Rackham Auditorium • Ann Arbor

## Stuttgart Chamber Orchestra

Dennis Russell Davies conductor

Catherine Malfitano soprano

Thu **3/6** 8 pm

Michigan Theater • Ann Arbor

## UMS Choral Union

Wind Ensemble of the Greater Lansing

Symphony Orchestra

Thomas Sheets conductor

Janice Beck organ

Sat **3/22** 8 pm

Pease Auditorium • Ypsilanti

## Kodo

Mon **3/24** – Wed **3/26**

Michigan Theater • Ann Arbor

## Susan Graham mezzo-soprano

Fri **3/28** 8 pm

Lydia Mendelssohn Theatre • Ann Arbor

## Takács Quartet and Muzsikás

Sat **3/29** 8 pm

Rackham Auditorium • Ann Arbor

## Muzsikás

Sun **3/30** 4 pm

Rackham Auditorium • Ann Arbor

## Evening at the Apollo

Fri **4/4** 8 pm

Michigan Theater • Ann Arbor

Sat **4/5** 8 pm

Detroit Opera House • Detroit

## Bach Collegium Japan

### Bach's *St. Matthew Passion*

Masaaki Suzuki conductor

Wed **4/9** 7:30 pm

St. Francis of Assisi Catholic Church • Ann Arbor

## Matthias Goerne baritone

Thu **4/10** 8 pm

Lydia Mendelssohn Theatre • Ann Arbor

## Afro-Brazilian Dance Party

Sat **4/12** 9 pm

EMU Convocation Center • Ypsilanti

## Gabrieli Consort and Players

### Bach's *St. John Passion*

Paul McCreech music director

Sat **4/19** 8 pm

Michigan Theater • Ann Arbor

## Morimur

The Hilliard Ensemble

Thu **5/1** 8 pm

St. Francis of Assisi Catholic Church • Ann Arbor

# UMS Tickets Make Great Holiday Gifts!

trip with a weeklong domestic tour of American summer music festivals in August.

Since 1996 Keith Lockhart and the Boston Pops Orchestra have recorded exclusively with RCA Victor. Mr. Lockhart's first six albums with the Boston Pops Orchestra on RCA Victor – *Runnin' Wild: The Boston Pops Play Glenn Miller* (1996), *American Visions* (1997), *The Celtic Album* (February 1998), *Holiday Pops* (September 1998), *A Splash of Pops* (1999), and *The Latin Album* (2000) – all received critical and popular acclaim. *The Celtic Album* was nominated for a Grammy Award in the Classical Crossover category, and *The Latin Album* received a nomination for “Best Pop Instrumental Album” at the 2001 Latin Grammy Awards. A compilation album entitled *Encore!*, featuring tracks from the previous five recordings, was released in March 2000. The orchestra's latest recording, *My Favorite Things – A Richard Rodgers Celebration*, was released in April 2002, in conjunction with the worldwide celebration of the centennial of that great American composer's birth.

Born in Poughkeepsie, New York, in November 1959, Keith Lockhart began his musical studies with piano lessons at the age of seven. He holds degrees from Furman University in Greenville, SC, and Carnegie-Mellon University in Pittsburgh. Mr. Lockhart came to the Boston Pops from Cincinnati, where he served as associate conductor of both the Cincinnati Symphony and Cincinnati Pops orchestras. Since 1998, Mr. Lockhart has also been music director of the Utah Symphony. In February 2002, he led the Utah Symphony as part of the Opening Exercises of the 2002 Winter Olympic Games in Salt Lake City. As a guest artist, Mr. Lockhart has conducted the major symphony orchestras of Chicago, Cleveland, Dallas, Los Angeles, Montreal, New York, Philadelphia, Singapore, Toronto, and Vancouver. In September, he opened the 02/03 Saint Louis Symphony season

with a gala concert featuring cellist Yo-Yo Ma. Upcoming engagements include performances with the Deutsches Symphonie-Orchester of Berlin on New Year's Eve, the Concertgebouw Orchestra of Amsterdam in June 2003, and the Toronto and Baltimore symphonies during the 03/04 season. Notable past engagements include his first major opera production, Douglas Moore's *The Ballad of Baby Doe*, with the Washington (DC) Opera and recent debuts with the New York Chamber Symphony, the Houston Symphony, and the New Japan Philharmonic.

*This evening's performance marks Keith Lockhart's UMS debut.*

**T**op prize-winner and recipient of a special award as “Best Canadian Singer” at the 1991 International Glory of Mozart Competition, soprano **Kathleen Brett** has also received the prestigious Sullivan Award from the William Matheus Sullivan Foundation of New York. Sought after as an artist both in North America and in Europe, Ms. Brett traveled during the 01/02 season to Calgary Opera, where she sang Susanna in *Le Nozze di Figaro*, to Arizona Opera for Blanche in *Dialogues of the Carmelites*, and to DeVlaamse Opera in Antwerp, where she performed Dorinda in *Orlando*. She also appeared at the Grant Park Music Festival in Chicago for Haydn's *Mass in C*, with the Utah Symphony for Fauré's *Requiem*, and with the Vancouver Bach Choir for Bach's *St. Matthew Passion*. A favorite of conductor Erich Kunzel, Ms. Brett has performed several pops programs with the maestro, with the





Cincinnati Symphony, the Detroit Symphony, and the Toronto Symphony. This season she returns to Arizona to perform Gretel in *Hansel and Gretel* and Musetta in *La Bohème* with the Vancouver Opera. This season's orchestral concerts include a return to Utah for Mahler's *Symphony No. 4* and the Minnesota Orchestra for *Messiah*. Ms. Brett has enjoyed a long artistic collaboration with the Canadian Opera Company, where she has portrayed a variety of roles including Susanna in *Le Nozze di Figaro*; Romilda in the Stephen Wadsworth production of Handel's *Xerxes*; and the Governess in Britten's *The Turn of the Screw*. She is featured as Kristina in that company's video of *The Makropulos Case*. She has also performed with L'Opéra de Montréal, Manitoba Opera, Calgary Opera, Opera Atelier (Toronto), Pacific Opera Victoria, and Edmonton Opera. Critically acclaimed debuts have included Handel's *Orlando*, in a Robert Carsen production with De Vlaamse Opera, Antwerp; Gluck's *Orphée et Euridice* with L'Opéra Français de New York at Lincoln Center; and *Le nozze di Figaro* with the Royal Opera, Covent Garden. In this country, she has appeared with the New York City Opera, the Dallas Opera, and San Francisco Opera. Ms. Brett has performed with every major Canadian orchestra and with many of the finest in America including those of Chicago, Detroit, and Philadelphia. Recent concert dates include "Viennese" programs with the Cincinnati Symphony under Jesus López-Cobos and with the Toronto Symphony Orchestra conducted by Yves Abel; *Messiah* with L'Orchestre Symphonique de Montréal; Fauré's *Requiem* with the Vancouver Symphony; and Mendelssohn's *A Midsummer Night's Dream* with the Toronto Symphony under Gunther Herbig. She has also performed a program of opera duets with the Phoenix Symphony, and has appeared in concerts with the National Arts Centre Orchestra, the Vancouver Symphony, and

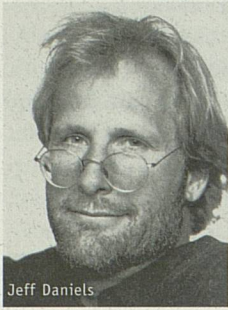
the Baltimore Symphony Orchestra.

In recital Ms. Brett toured the UK with the Aldeburgh Connection of Toronto, with whom she also has recorded the Brahms and Schumann *Liebeslieder*. Equally comfortable in American popular repertoire, she has performed at the Ravinia, Meadowbrook, and Riverbend festivals. She is featured on the Cincinnati Pops Telarc of Meredith Willson's *The Music Man* as Marian the Librarian.

*This evening's performance marks Kathleen Brett's third appearance under UMS auspices. Ms. Brett made her UMS debut as soprano soloist in Handel's Messiah in December of 1998 in Hill Auditorium.*

**J**eff Daniels has been a professional stage and film actor for 25 years. Daniels launched his film career on the New York stage. Raised in Michigan, Daniels attended Central Michigan University, majoring in English with a minor in Theater. When Marshall W. Mason arrived for a stint as guest director at neighboring Eastern Michigan University, Daniels won the lead roles in Tennessee Williams's *Summer and Smoke* and Lanford Wilson's *The Hot L Baltimore*. Mason was impressed with the 21-year-old actor and invited him to join the Circle Repertory Company in New York.

Leaving college a year early, he moved to New York in the fall of 1976. Mason immediately cast him in David Storey's play, *The Farm*. It was the role of Jed Jenkins in the New York production of Lanford Wilson's *Fifth of July*, however, that won Daniels his first widespread recognition. Over the next several years, Daniels played Jed in three different productions: Off-Broadway at Circle Rep (1978), in Los Angeles at the Mark Taper Forum (1979) and finally on Broadway (1980) where he won a Drama Desk nomination for Best Supporting Actor. Following



Jeff Daniels

the filming of *Fifth of July* for television, Daniels returned to Circle rep to start in a one man show adaptation of Dalton Trumbo's World War I novel, *Johnny Got His Gun*, for which he won a 1983 Obie Award.

Daniels made his feature film debut in Milos Forman's *Ragtime*. His first popular success came with his next project, *Terms of Endearment*, as Debra Winger's philandering husband. Next came two leading roles in Woody Allen's *The Purple Rose of Cairo*. Working with Woody Allen was a turning point in Daniels's career. So much so, he named his theater company after the film.

A listing of some of Daniels's other film credits includes: Woody Allen's *Radio Days* (1987), *The Butcher's Wife* (1991), David Twohy's *Grand Tour* (1992), *Arachnophobia* (1990), *Gettysburg* (1993), *Speed* (1994) *Dumb & Dumber* (1994), *Fly Away Home* (1996), *2 Days in the Valley* (1996), *101 Dalmatians* (1996), *Trial and Error* (1997), *Pleasantville* (1998), *My Favorite Martian* (1999), and *All the Rage* (1999). His latest films include: *Blood Work*, directed by and co-starring Clint Eastwood, which was released in August 2002, and *Gods and Generals*, the prequel to *Gettysburg*, which was released in September 2002.

In 1991, Daniels established the Purple Rose Theatre Company (PRTC), a not-for-profit professional theater featuring Midwestern actors, directors, playwrights, and designers. Located in the small town of Chelsea, Michigan, the 160-seat space provides intimate surroundings, bringing the subtlety and detail of film acting to the stage. In nine years, the PRTC has gained a national reputation as a home for new American plays.

Daniels has written several plays for the Purple Rose. His first play, *Shoe Man*, won

the *Detroit News* 1990–1991 "Best New Play" Award. Daniels's next comedy, *The Tropical Pickle* (1992), played to sold-out audiences for 17 consecutive weeks. *The Vast Difference* (1993) ran for 14 weeks before moving to Detroit's Gem Theatre for a three-month commercial run. *Thy Kingdom's Coming* (1994), a biting satire about Hollywood and the Religious Right, ran for 12 weeks and was produced in New York by The Barrow Group in May 1999. His other plays include *Apartment 3A* (1996) and, most recently, *Boom Town* (1998), which Daniels also directed. *Across the Way*, his newest play, opened the Purple Rose Theatre Company's 02/03 season.

Recently, Daniels formed Purple Rose Films, a Michigan-based production company as an outlet for his desire to act, write, and direct his own independent films. He completed writing, directing, and starring in the film version of his most popular play, *Escanaba in Da Moonlight*, shot on location in the Upper Peninsula of Michigan in the winter and spring of 2000. Self-distributed in Michigan on Super Bowl Weekend in 2001, the film grossed \$2.3 million, making it one of the top-grossing independent films in the country.

*Super Sucker*, Daniels's second writing, directing, and acting venture, was shot in Jackson, Michigan in the spring of 2001. The film won the Audience Award for "Best Feature" at the HBO sponsored US Comedy Arts Festival in Aspen, CO, in February 2002 and was recently accepted at CineVegas, the Las Vegas Film Festival, as well as appearing at the East Lansing Film Festival and the Waterfront Film Festival in Saugatuck, MI. After making its way through the festival circuit, PRF plans to self-distribute the film in the Upper Midwest in January 2003.

*This evening's performance marks Jeff Daniels's UMS debut.*

**T**he **University Singers of California State University Fullerton** have secured a distinguished reputation as one of the finest collegiate vocal ensembles in the nation. The University Singers have performed with such renowned professional orchestras as the Los Angeles Philharmonic under both Zubin Mehta and Carlo Maria Giulini, the Pacific Symphony led by Carl St. Clair, and the Long Beach Symphony. Upcoming highlights from the ensemble's 02/03 performance schedule include the current fourth consecutive national tour with the Boston Pops Esplanade Orchestra led by Keith Lockhart, and three performances at the February 2003 American Choral Director's Association national convention in New York. The ensemble is currently led by John Alexander, artistic director since 1994, when he became Professor of Music and Director of Choral Studies at California State University Fullerton. He has also served as Artistic Director and Conductor of the Pacific Chorale of Southern California for 30 years and has appeared as a guest conductor throughout the world with many leading professional orchestras such as the Lamoureux Orchestra of Paris, the National Symphony of Belgium, the Hong Kong Symphony, the Los Angeles Chamber Orchestra, and the Pacific Symphony. John Alexander is a composer and editor of his own choral series published with Hinshaw Music, and currently serves as President of Chorus America, a national organization designed to enhance the development of choral music in the US.

*This evening's performance marks the UMS debut of the University Singers of California State University Fullerton.*

**I**n 1881, Henry Lee Higginson, the founder of the Boston Symphony Orchestra, wrote of his wish to present in Boston "concerts of a lighter kind of music." The first **Boston Pops** concert, on July 11, 1885, represented the fulfillment of his dream. Called the "Promenade Concerts" until 1900, they combined light classical music, tunes from the current hits of the musical theater, and an occasional novelty number. Allowing for some changes of taste over the course of a century, the early programs were remarkably similar to the Pops programs of today.

Pops concerts are performed by the Boston Pops Orchestra, which is composed of members of the Boston Symphony Orchestra (except for 12 of the principal players, who tour during the Pops season as the Boston Symphony Chamber Players), and by the **Boston Pops Esplanade Orchestra** (BPEO), made up of other Boston-based musicians. Both the Boston Pops Orchestra and the Boston Pops Esplanade Orchestra appear on television and represent the city of Boston on tour. The Boston Pops Orchestra is featured in the long-running PBS series *Evening at Pops*. The Fourth of July concert featuring the Boston Pops Esplanade Orchestra at the Hatch Shell in Boston is regularly broadcast on A&E. The Boston Pops Orchestra appeared at the White House as part of its 100th Birthday Celebration in 1985; and the Boston Pops Esplanade Orchestra participated in the centennial celebration of the Statue of Liberty in 1986. John Williams led tours of Japan with the Boston Pops Esplanade Orchestra in 1987 and with the Boston Pops Orchestra in 1990 and 1993. Keith Lockhart has led the Boston Pops Esplanade Orchestra on tour to Japan and Korea in 1997 and 2001, with a return visit to Japan in July 2002. He has also led the BPEO on 17 national tours.



## **MAKING SPIRITS BRIGHT THE 2002 FIDELITY INVESTMENTS BOSTON POPS HOLIDAY TOUR**

Through our annual support of the Boston Pops, Fidelity Investments is helping continue a tradition of glorious music making. And during this festive season, we are especially honored to sponsor THE 2002 FIDELITY INVESTMENTS BOSTON POPS HOLIDAY TOUR, a renowned series of performances held across the U.S. in seven different cities. We are delighted to play a role in bringing you joyful entertainment of this exceptional caliber during the holidays.



The history of the Boston Pops was for many years linked with the name of Arthur Fiedler, who in 1930 became the 18th conductor of the Boston Pops and the first who was American-born. One of Fiedler's great dreams was to establish a series of free outdoor orchestral concerts for the people of Boston. In 1929, this dream became a reality when he organized the first Esplanade Concerts, which took place on the banks of the Charles River. Fiedler's Esplanade concerts were eventually absorbed by the Boston Symphony Orchestra organization.

Following Fiedler's death in July 1979, Boston Pops Associate Conductor Harry Ellis Dickson and a number of guest conductors led the orchestra until John Williams was appointed Conductor in January 1980. Mr. Williams stepped down as conductor in December 1993 and now holds the title Laureate Conductor. Keith Lockhart became the 20th conductor of the Boston Pops in February 1995.

*This evening's performance marks the Boston Pops's seventh appearance under UMS auspices and the first UMS appearance of the ensemble in 40 years. Between 1953 and 1962, the ensemble, then under the name Boston Pops Tour Orchestra, made six appearances in Ann Arbor under the baton of Arthur Fiedler. The Boston Pops made their UMS debut on March 23, 1953.*

## The University Singers of California State University Fullerton

JOHN ALEXANDER, *Music Director and  
Conductor*

### Sopranos

Andrea Dodson  
Stephanie DeJohn  
Kelsey Gile  
Valerie Gonzales  
Bianca Hall  
Allison Harned  
Sun Kim  
Sarah Lartigue  
Jessica Mason  
Tulan Nguyen  
Chante Olivas  
LaVista Silva  
Kellee Schildknecht  
Cindy Stück  
Rachel White

### Altos

Cindy Anderson  
Dzidzofe Avouglan  
Megan Chaney  
Judi Elterman  
Devon Glenn  
Vanessa Hanna  
Anna Hanson  
Amanda Hoyny  
Malesha Jesse  
Kathleen Johnson  
Kristi Noel Jordan  
Douglas Law  
Betty Lee  
Monica Leung  
Lily Mettler  
Renee Tatum

### Tenors

Mike Adkins  
Sebastian Aguirre  
John Baker  
Bryan Balderman  
Sean Boulware  
Sean Gantka  
Danny Larsh  
Quang Le  
Steve Olvey  
Benjamin Plaché  
Brandon Roberts  
Sean Sacolo  
Jeremy Wiggins

### Basses

Joe Cosgrove  
Ryan Demaree  
Ken Field  
Jason Halliday  
Rowland Hazard  
Jeffrey Mistri  
Samuel Nuñez  
Roberto Ortiz  
Seth Pellee  
David Snedeger  
Josh Stansfield  
Keith Still  
Tim Walker  
Scott Ziemann

## The Boston Pops Esplanade Orchestra

KEITH LOCKHART, *Conductor*

*Julian and Eunice Cohen Boston Pops Conductor's Chair, fully funded in perpetuity*

JOHN WILLIAMS, *Laureate Conductor*

BRUCE HANGEN, *Principal Pops Guest Conductor*

HARRY ELLIS DICKSON, *Associate Conductor Laureate*

### First Violins

Joseph Scheer  
Michael Rosenbloom  
Lisa Crockett  
Kristina Nilsson  
Gregory Vitale  
Sandra Kott  
Dianne Pettipaw  
Cynthia Cummings  
Gerald Mordis  
Maynard Goldman  
James Orent  
Paul MacDowell  
Melissa Howe  
Stacey Alden  
Liana Zaretsky  
Karma Tomm

### Second Violins

Clayton Hoener  
Jennifer Elowitz  
Susan Shipley  
Colin Davis  
Danielle Maddon  
Julie Leven  
Rebecca Katsenes  
Christine Vitale  
Wen-Yi Shih  
Krista Buckland-Reisner  
Sarita Uranovsky  
Kay Knudsen

### Violas

Kenneth Stalberg  
Jean Haig  
Anne Black  
David Feltner  
Barbara Wright  
Lisa Suslowicz  
Joan Ellersick  
Joli Wu

### Cellos

Ronald Lowry  
David Finch  
George Seaman  
Theresa Borsodi  
Andrew Mark  
William Rounds  
Toni Rapier  
Jennifer Lucht

### Basses

Robert Caplin  
Barry Boettger  
Joseph Holt  
Gregory Koeller  
Elizabeth Foulser  
George Speed  
Mark Henry

### Flutes

Renee Krimsier  
Kathy Boyd

### Piccolo

Iva Milch

### Oboes

Laura Ahlbeck  
Frank Charnley

### English Horn

Barbara LaFitte

### Clarinets

Ian Greitzer  
Aline Benoit

### Bass Clarinet

Edward Avedisian

### Saxophone

Michael Monaghan

### Bassoons

Ronald Haroutunian  
Donald Bravo

### Contrabassoon

Margaret Phillips

### Horns

Kevin Owen  
Richard Menaul  
Nona Gainsforth  
Thomas Haunton  
Richard Greenfield

### Trumpets

Bruce Hall  
Gregory Whitaker  
Dennis Alves  
Steven Emery

### Trombones

Darren Acosta  
Hans Bohn

### Bass Trombone

Mark Cantrell

### Tuba

Gary Ofenloch

### Timpani

Everett Beale

### Percussion

Dean Anderson  
Neil Grover  
James Gwin  
Patrick Hollenbeck

### Harp

Anna Reinersmann

### Piano

Bob Winter

### Librarian

William Shisler

### Personnel Manager

Lynn G. Larsen

### Boston Pops Tour Staff

Tony Beadle, *Manager*  
Dennis Alves, *Director of Programming*  
Jana Gimenez, *Operations Manager*  
Sheri Goldstein, *Personal Assistant to the Conductor*  
Julie Knippa, *Administration Coordinator*  
Margo Saulnier, *Artistic Coordinator*  
Peter Pfitzinger, *Stage Manager*  
Pam Netherwood, *Boston Pops Merchandise*  
Tahli Adler, *Program Coordinator for Corporate Sponsorships*  
Bernadette Horgan, *Director of Media Relations*  
Lighting Design:  
H.R. Costa  
Audio Design:  
Steve Colby  
Travel arrangements:  
Blue Heart Tours,  
Alexandria, VA  
Tour management:  
Columbia Artists  
Management,  
New York, NY

# UMS experience

## THE 02/03 UMS SEASON

Please note that a complete listing of all UMS Educational activities will now be conveniently located within the concert program section of your program book. All Education activities are also posted on the UMS website at [www.ums.org](http://www.ums.org).

*\*Forest Health Services presents the 124th Annual Choral Union series.*

### Hubbard Street Dance Chicago

Jim Vincent, artistic director

Friday, September 20, 8 p.m.

Saturday, September 21, 8 p.m.

Sunday, September 22, 2 p.m.

Power Center

The Friday performance is sponsored by DTE Energy Foundation.

The Sunday performance is sponsored by Pfizer.

Media Sponsors WDET 101.9 FM and Metro Times.

### Anouar Brahem Trio

#### *Fann Wa Tarab: An Evening of Arabic Music*

Anouar Brahem, oud

Barbaros Erköse, clarinet

Lassad Hosni, bendir & darbouka

Sunday, September 22, 4 p.m.

Lydia Mendelssohn Theatre

Presented in partnership with the Arab Community Center for Economic and

Social Services, with special support from the University of Michigan.  
Media Sponsor WEMU 89.1 FM.

### Cullberg Ballet

#### *Mats Ek's Swan Lake*

Tuesday, October 8, 8 p.m.

Power Center

Funded in part by the National Dance Project of the New England Foundation for the Arts.

Media Sponsor Metro Times.

### Cleveland Orchestra\*

Franz Welser-Möst, music director

Heinz Karl Gruber, baritone

chansonnier

Wednesday, October 9, 8 p.m.

Orchestra Hall, Detroit

Sponsored by Forest Health Services.

Media Sponsor WGTE 91.3 FM.

### Tamango and Urban Tap

Friday, October 11, 8 p.m.

Saturday, October 12, 2 p.m.

(one-hour family performance)

Saturday, October 12, 8 p.m.

Power Center

The Friday performance is sponsored by Elastizell.

The Saturday evening performance is co-presented with the Office of the Senior Vice Provost for Academic Affairs.

Presented with support from the Wallace-Reader's Digest Funds.

Media Sponsors WEMU 89.1 FM and Metro Times.

### Venice Baroque Orchestra

Andrea Marcon, conductor and harpsichord

Giuliano Carmignola, baroque violin

Sunday, October 13, 7:30 p.m.

St. Francis of Assisi Catholic Church

Presented with the generous support of Michael Allemang and Beverley and Gerson Geltner

### Abbey Theatre of Ireland

#### *Euripides' Medea*

Featuring Fiona Shaw

Deborah Warner, director

Thursday, October 17, 8 p.m.

Friday, October 18, 8 p.m.

Saturday, October 19, 2 p.m.

& 8 p.m.

Sunday, October 20, 2 p.m.

Power Center

Presented with support from the Wallace-Reader's Digest Funds and the National Endowment for the Arts.

Media Sponsors Michigan Radio and Metro Times.

### Takács Quartet and

#### *Garrick Ohlsson, piano*

Sunday, October 20, 7 p.m.

Rackham Auditorium

Sponsored by Edward Surovell Realtors.

Media Sponsor WGTE 91.3 FM.

---

**Lorraine Hunt Lieberson,  
mezzo-soprano**

Robert Tweten, piano  
Wednesday, October 23, 8 p.m.  
Lydia Mendelssohn Theatre  
Sponsored by National City.

---

**Orquestra de São Paulo\***

John Neschling, conductor  
Sérgio and Odair Assad, guitar  
Wednesday, October 30, 8 p.m.  
Michigan Theater  
Media Sponsor WGTE 91.3 FM.

---

**Banda Mantiqueira Brazilian  
Big Band**

**with Orquestra de São Paulo**  
Thursday, October 31, 8 p.m.  
Michigan Theater  
Sponsored by Bank of Ann Arbor.  
Additional support provided by  
JazzNet.  
Media Sponsor WEMU 89.1 FM.

---

**Grupo Corpo Brazilian  
Dance Theater**

Rodrigo Pederneiras,  
artistic director  
Friday, November 1, 8 p.m.  
Saturday, November 2, 2 p.m.  
(one-hour family performance)  
Saturday, November 2, 8 p.m.  
Power Center  
The Saturday evening performance is  
co-presented with the Office of the  
Senior Vice Provost for Academic  
Affairs.  
Media Sponsors WEMU 89.1 FM and  
Metro Times.

---

**Michigan Chamber Players**

Sunday, November 3, 4 p.m.  
Rackham Auditorium  
Complimentary Admission

---

**Herbie Hancock Quartet**

Herbie Hancock, piano  
Gary Thomas, saxophones  
Scott Colley, bass  
Terri Lyne Carrington, drums  
Wednesday, November 6, 8 p.m.  
Michigan Theater  
Sponsored by McKinley Associates, Inc.

Additional support provided by  
JazzNet.

Media Sponsors WEMU 89.1 FM and  
WDET 101.9 FM.

---

**Cantigas de Santa Maria  
with The Boston Camerata,  
Camerata Mediterranea and  
L'Orchestre Abdelkrim Rais  
of Fez, Morocco**

Thursday, November 7, 8 p.m.  
St. Francis of Assisi Catholic Church  
Co-presented with the Office of the  
Senior Vice Provost for Academic Affairs.

---

**Caetano Veloso**

Friday, November 15, 8 p.m.  
Michigan Theater  
Sponsored by Borders.  
Additional support provided by JazzNet.  
Media Sponsors WEMU 89.1 FM and  
WDET 101.9 FM.

---

**Gidon Kremer, violin  
Sabine Meyer, clarinet  
Oleg Maisenberg, piano**

Sunday, November 17, 4 p.m.  
Rackham Auditorium  
Media Sponsor WGTE 91.3 FM.

---

**Orchestre Philharmonique de  
Radio France\***

Myung-Whun Chung, conductor  
Roger Muraro, piano  
Valerie Hartmann-Claverie,  
ondes Martenot  
Tuesday, November 19, 8 p.m.  
Orchestra Hall  
Media Sponsor WGTE 91.3 FM.

---

**Bolshoi Ballet  
Swan Lake**

Choreography by Yuri  
Grigorovich after  
Marius Petipa and Lev Ivanov  
Wednesday, November 20, 7:30 p.m.  
Thursday, November 21, 8 p.m.  
Friday, November 22, 8 p.m.  
Saturday, November 23, 2 p.m.  
& 8 p.m.  
Sunday, November 24, 2 p.m.  
Detroit Opera House  
The Bolshoi Ballet is co-presented with  
the Detroit Opera House and presented

with leadership support from the  
University of Michigan.

The Friday performance is sponsored  
by McDonald Investments.

The Saturday afternoon performance  
is sponsored by the Thomas B.  
McMullen Co.

The Saturday evening performance is  
sponsored by Bank One.

---

**Handel's *Messiah***

(Mozart edition)  
UMS Choral Union  
Ann Arbor Symphony Orchestra  
Thomas Sheets, conductor  
Friday, December 6, 8 p.m.  
Saturday, December 7, 8 p.m.  
Michigan Theater  
Presented with the generous support of  
Carl and Isabelle Brauer.

---

**Boston Pops Esplanade  
Orchestra\*  
Holiday Concert!**

Keith Lockhart conductor  
Sunday, December 8, 6 p.m.  
Crisler Arena  
Sponsored by Pfizer.  
Media Sponsor WGTE 91.3 FM.

---

**Emerson String Quartet**

Friday, December 13, 8 p.m.  
Rackham Auditorium  
Presented with the generous support  
of Ann and Clayton Wilhite.  
Media Sponsor WGTE 91.3 FM.

---

**Altan**
**A Traditional Gaelic Seasonal  
Celebration**

with special guests  
Laoise Kelly, harp  
Seamus Begley, accordion and vocals  
Jim Murray, guitar  
Step dancers from Kerry  
Saturday, December 14, 8 p.m.  
Michigan Theater  
Media Sponsor WDET 101.9 FM.



---

### **Sweet Honey in the Rock with Toshi Reagon and Big Lovely**

Friday, January 10, 8 p.m.  
Michigan Theater  
Sponsored by Pfizer.  
Media Sponsors WEMU 89.1 FM and  
WDET 101.9 FM.

---

### **Bill T. Jones/Arnie Zane Dance Company with the Chamber Music Society of Lincoln Center featuring the Orion String Quartet**

Saturday, January 11, 8 p.m.  
Sunday, January 12, 4 p.m.  
Power Center  
The Saturday performance is spon-  
sored by Borders.  
The Sunday performance is presented  
with the generous support of Maurice  
and Linda Binkow.  
Funded in part by the National Dance  
Project of the New England  
Foundation for the Arts.  
Media Sponsors WGTE 91.3 FM,  
WDET 101.9 FM and Metro Times.

---

### ***blissing the boats***

A solo performance written and  
conceived by Sekou Sundiata  
Friday, January 17, 8 p.m.  
Saturday, January 18, 8 p.m.  
Sunday, January 19, 2 p.m.  
Trueblood Theatre  
This is a Heartland Arts Fund program.  
Media Sponsor Michigan Radio.

---

### **An Evening with Audra McDonald**

Audra McDonald and Trio  
Ted Sperling, music director  
and piano  
Peter Donovan, bass  
Dave Ratajczak, drums  
Sunday, January 19, 7 p.m.  
Michigan Theater  
Presented with the generous support of  
Robert and Pearson Macek.  
Additional support provided by JazzNet.  
Media Sponsor WEMU 89.1 FM.

---

### **Sekou Sundiata and Band**

Monday, January 20, 8 p.m.  
Michigan Theater  
Co-presented with the UM Office of  
Academic Multicultural Initiatives.  
This is a Heartland Arts Fund program.  
Media Sponsors WEMU 89.1 FM and  
Metro Times.

---

### **Voices of Brazil featuring Ivan Lins, Ed Motta, Joao Bosco, Leila Pinheiro and Zelia Duncan**

Friday, January 31, 8 p.m.  
Michigan Theater  
Sponsored by Keybank and McDonald  
Investments, Inc.  
Media Sponsor WEMU 89.1 FM.

---

### **Egberto Gismonti**

Saturday, February 1, 8 p.m.  
Michigan Theater  
Presented with support from JazzNet.  
Media Sponsor WEMU 89.1 FM.

---

### **Michigan Chamber Players**

Sunday, February 2, 4 p.m.  
Rackham Auditorium  
Complimentary Admission

---

### **Martha Clarke**

***Vienna: Lusthaus (revisited)***  
Martha Clarke, director and  
choreographer  
Richard Peaslee, music  
Charles L. Mee, text  
Friday, February 7, 8 p.m.  
Saturday, February 8, 8 p.m.  
Power Center  
Funded in part by the National Dance  
Project of the New England  
Foundation for the Arts.  
Media Sponsors Michigan Radio and  
Metro Times.

---

### **Ying Quartet**

Sunday, February 9, 4 p.m.  
Rackham Auditorium  
Sponsored by Miller, Canfield,  
Paddock and Stone, P.L.C.  
Media Sponsor WGTE 91.3 FM.

---

### **Dave Holland Quintet and New York Big Band**

Dave Holland, bass  
Robin Eubanks, trombone  
Chris Potter, saxophones  
Steve Nelson, vibraphone &  
marimba  
Billy Kilson, drums  
Saturday, February 15, 8 p.m.  
Michigan Theater  
Presented with support from the  
Wallace-Reader's Digest Funds.  
Additional support is provided by  
JazzNet.  
Media Sponsors WEMU 89.1 FM,  
WDET 101.9 FM and Metro Times.  
Presented in conjunction with the  
2003 UM Jazz Festival.

---

### **Eos Orchestra\***

***The Celluloid Copland:***  
***Copland's Music for the Movies***  
(performed with original films)  
Jonathan Sheffer, conductor  
Sunday, February 16, 4 p.m.  
Michigan Theater  
Sponsored by the CFI Group.  
Media Sponsor WGTE 91.3 FM.

---

### **Vienna Philharmonic\***

Nikolaus Harnoncourt, conductor  
Thursday, February 27, 8 p.m.  
Detroit Opera House  
This performance is co-presented with  
the University of Michigan.  
Media Sponsor WGTE 91.3 FM.

---

### **Royal Shakespeare Company Shakespeare's *The Merry Wives of Windsor***

Rachel Kavanaugh, director  
Saturday, March 1, 7:30 p.m.  
Wednesday, March 5, 7:30 p.m.  
Thursday, March 6, 1:30 p.m.  
Saturday, March 8, 7:30 p.m.  
Sunday, March 9, 1:30 p.m.  
Power Center  
The Royal Shakespeare Company resi-  
dency is presented in association with  
the University Musical Society and the  
University of Michigan.  
Sponsored in part by Pfizer.  
Additional support is provided by  
The Power Foundation.  
Media Sponsor Michigan Radio.

We're public radio.

We don't sugar coat  
the news.

(Or the blues.)



The latest headlines and the greatest guitar lines.  
Undiluted, unfiltered, and unprocessed. Locally  
grown news, traffic, blues and jazz too.

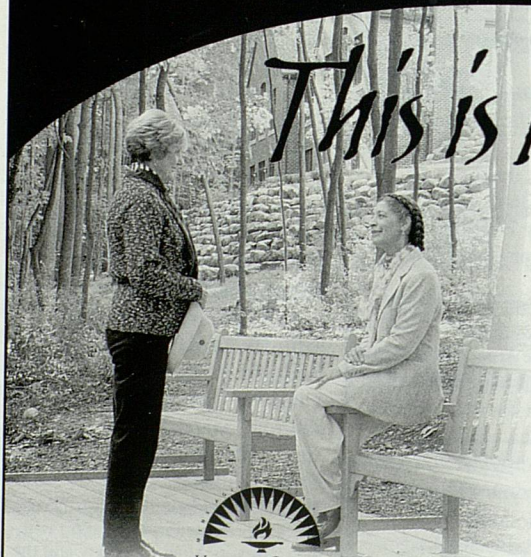
**WEMU 89.1**  
www.wemu.org

Public broadcasting from Eastern Michigan University.

The Choice for **n.p.r.** News, Jazz and Blues.

## UNIVERSITY COMMONS CONDOMINIUMS

*This is living...*



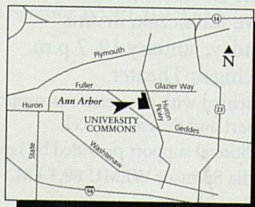
A Blue Hill Development Community

**734.663.2500**

www.BlueHillDevelopment.com

A UNIQUELY RICH AND  
UNCOMMONLY IMAGINATIVE  
WAY TO LIVE...

- An active adult community for University of Michigan alumni, faculty and staff who love to live, learn and explore.
- Cultural, intellectual, recreational and social opportunities in a beautiful 18-acre wooded setting.
- Elegant, maintenance-free condominium homes adjacent to North Campus and near downtown Ann Arbor.



*Models Open Daily*  
Noon to 5:00pm



---

### Royal Shakespeare Company Shakespeare's *Coriolanus*

David Farr, director  
 Sunday, March 2, 1:30 p.m.  
 Tuesday, March 4, 7:30 p.m.  
 Thursday, March 6, 7:30 p.m.  
 Friday, March 7, 7:30 p.m.  
 Saturday, March 8, 1:30 p.m.  
 Power Center

The Royal Shakespeare Company residency is presented in association with the University Musical Society and the University of Michigan.

Sponsored in part by Pfizer.  
 Additional support is provided by The Power Foundation.  
 Media Sponsor Michigan Radio.

---

### Royal Shakespeare Company Salman Rushdie's *Midnight's Children*

A new dramatization by Salman Rushdie, Simon Reade and Tim Supple  
 Wednesday, March 12, 7:30 p.m.  
 Thursday, March 13, 7:30 p.m.  
 Friday, March 14, 7:30 p.m.  
 Saturday, March 15, 1:30 p.m.  
 & 7:30 p.m.

Sunday, March 16, 1:30 p.m.  
 Power Center

The Royal Shakespeare Company residency is presented in association with the University Musical Society and the University of Michigan.

Sponsored in part by Pfizer.  
 Additional support is provided by The Power Foundation.  
 Media Sponsor Michigan Radio.

---

### Alban Berg Quartet

Monday, March 3, 8 p.m.  
 Rackham Auditorium

Sponsored by Bank of Ann Arbor.  
 Media Sponsor WGTE 91.3 FM.

---

### Stuttgart Chamber Orchestra\*

Dennis Russell Davies, conductor  
 Catherine Malfitano, soprano  
 Alexander Neander and Wolfram von Bodecker, mimes  
 Thursday, March 6, 8 p.m.  
 Michigan Theater

Sponsored by DaimlerChrysler Corporation Fund.

This performance is co-presented with the University of Michigan.

Media Sponsor WGTE 91.3 FM.

---

### UMS Choral Union

Wind Ensemble of the Greater Lansing Symphony Orchestra  
 Thomas Sheets, conductor  
 Janice Beck, organ  
 Saturday, March 22, 8 p.m.  
 Pease Auditorium

---

### Kodo

Monday, March 24, 8 p.m.  
 Tuesday, March 25, 8 p.m.  
 Wednesday, March 26, 8 p.m.  
 Michigan Theater  
 Media Sponsor WDET 101.9 FM and Metro Times.

---

### Susan Graham, mezzo-soprano

Malcolm Martineau, piano  
 Friday, March 28, 8 p.m.  
 Lydia Mendelssohn Theatre

---

### Takács Quartet and Muzsikás

Saturday, March 29, 8 p.m.  
 Rackham Auditorium  
 Sponsored by Learning Express-Michigan.  
 Media Sponsor WGTE 91.3 FM.

---

### Muzsikás

Featuring Márta Sebestyén  
 Sunday, March 30, 4 p.m.  
 Rackham Auditorium  
 Co-presented with the Office of the Senior Vice Provost for Academic Affairs.  
 Media Sponsor WDET 101.9 FM.

---

### Evening at the Apollo

Friday, April 4, 8 p.m.  
 Michigan Theater  
 Saturday, April 5, 8 p.m.  
 Detroit Opera House  
 The Friday performance is sponsored by Bank One.  
 The Saturday performance is sponsored by Borders.

These performances are co-presented with the University of Michigan and presented in partnership with The Arts League of Michigan.

Media Sponsors WEMU 89.1 FM and Metro Times.

---

### Bach Collegium Japan Bach's *St. Matthew Passion*

Masaaki Suzuki, conductor  
 Wednesday, April 9, 7:30 p.m.  
 St. Francis of Assisi Catholic Church

---

### Matthias Goerne, baritone

Eric Schneider, piano  
 Thursday, April 10, 8 p.m.  
 Lydia Mendelssohn Theatre  
 Sponsored by National City.

---

### Afro-Brazilian Dance Party

Saturday, April 12, 9 p.m.  
 EMU Convocation Center  
 Co-sponsored by Sesi.  
 Media Sponsors WEMU 89.1 FM and Metro Times.

---

### Gabrieli Consort and Players\*

Bach's *St. John Passion*  
 Paul McCreech, music director  
 Saturday, April 19, 8 p.m.  
 Michigan Theater  
 Media Sponsor WGTE 91.3 FM.

---

### The Hilliard Ensemble *Morimur*

Christoph Poppen, violin  
 Thursday, May 1, 8 p.m.  
 St. Francis of Assisi Catholic Church



## THE FORD HONORS PROGRAM

**T**he **FORD HONORS PROGRAM** is made possible by a generous grant from the Ford Motor Company Fund and benefits the UMS Education Program. Each year, UMS honors a world-renowned artist or ensemble with whom we have maintained a long-standing and significant relationship. In one evening, UMS pays tribute to and presents the artist with the UMS Distinguished Artist Award, and hosts a dinner and party in the artist's honor. Van Cliburn was the first artist so honored, with subsequent honorees being Jessye Norman, Garrick Ohlsson, The Canadian Brass, Isaac Stern, Marcel Marceau, and Marilyn Horne.



*Ford Honors  
Program  
Honorees*

1996  
**Van  
Cliburn**

1997  
**Jessye  
Norman**

1998  
**Garrick  
Ohlsson**

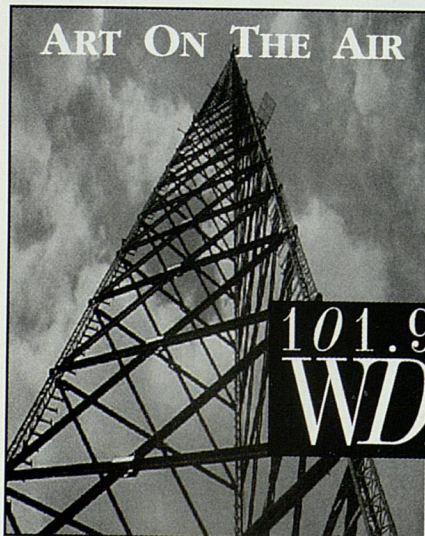
1999  
**The  
Canadian  
Brass**

2000  
**Isaac Stern**

2001  
**Marcel  
Marceau**

2002  
**Marilyn  
Horne**

## ART ON THE AIR



**101.9 FM  
WDET**

WDET FM 101.9 is  
Southeast Michigan's  
arts & information station.

Tune in for  
in-depth news,  
diverse music programming,  
captivating interviews,  
local arts coverage,  
and more

WDET is a proud sponsor  
of local cultural and  
community events.

WAYNE STATE  
UNIVERSITY

[www.wdetfm.org](http://www.wdetfm.org)

## EDUCATION & AUDIENCE DEVELOPMENT

Considered one of the top performing arts educational programs in the country, UMS strives to illuminate the performing arts through education and community engagement, offering audiences a multitude of opportunities to make connections and deepen their understanding of the arts.

### UMS Community Education Program

The following activities enlighten and inform audiences about the artists, art forms, ideas, and cultures presented by UMS. Details about specific 02/03 educational activities will be announced closer to each event. For more information about adult education or community events, please visit the website at [www.ums.org](http://www.ums.org), email [umsed@umich.edu](mailto:umsed@umich.edu), or call 734.647.6712.

### Artist Interviews

These interviews engage the leading art-makers of our time in conversations about their body of work, their upcoming performance, and the process of creating work for the world stage.

### Master Classes

Master classes are unique opportunities to see, hear, and feel the creation of an art form. Through participation and/or observation, individuals gain insight into the process of art making and training.

### Study Clubs

Led by local experts and educators, UMS Study Clubs offer audiences the opportunity to gain deeper understanding of a particular text, artist, or art form. The study clubs are designed to give a greater appreciation of a specific subject matter within the context of the performance.

### Essential Primers

This series is designed for seasoned concert-goers as well as new audiences. Each "primer" is designed to build and deepen basic understanding about a particular art form.

### PREPs and Lectures

Pre-performance talks (PREPs) and lectures prepare audiences for upcoming performances.

### Meet the Artists

Immediately following many performances, UMS engages the artist and audience in conversation about the themes and meanings within the performance, as well as the creative process.

### Immersion

A series of events focused on a theme, culture, art form, or artist that may include master classes, films, panels and community engagement events. 2002/2003 Immersions include Abbey Theatre of Ireland: Euripides' *Medea* and Brazilian Dance and Music.

### Artists-in-Residence

Many artists remain in Michigan beyond their performances for short periods of time to deepen the connection to communities throughout the region. Artists teach, create, and meet with community groups, university units, and schools while in residence. For the 02/03 season, major residencies include the Bolshoi Ballet, Sekou Sundiata, and the Royal Shakespeare Company.

## UMS YOUTH, TEEN, AND FAMILY EDUCATION PROGRAMS

UMS has a special commitment to educating the next generation. A number of programs are offered for K-12 students, educators, and families to further develop understanding and exposure to the arts. For information about the Youth, Teen, and Family Education Program, visit the website at [www.ums.org](http://www.ums.org), email [umsyouth@umich.edu](mailto:umsyouth@umich.edu), or call 734.615.0122.

### Youth Performance Series

Designed to enhance the K-12 curriculum, UMS Youth Performances cover the full spectrum of world-class dance, music, and theater. Schools attending youth performances receive UMS's nationally recognized study materials that connect the performance to the classroom curriculum. The 2002/2003 Youth Performance Series features:

- Tamango and Urban Tap
- Herbie Hancock Quartet
- Sweet Honey in the Rock
- Voices of Brazil
- Sphinx Competition – *free!*
- Kodo

Teachers who wish to be added to the youth performance mailing list should call 734.615.0122 or email [umsyouth@umich.edu](mailto:umsyouth@umich.edu),

*The Youth Education Program is sponsored by*



*Ford Motor Company  
Fund*

NATIONAL  
ENDOWMENT  
FOR THE  
ARTS



### Teacher Workshop Series

As part of UMS's ongoing effort to incorporate the arts into the classroom, local and national arts educators lead in-depth teacher workshops designed to increase educators' facility to teach through and about the arts. UMS is in partnership with the Ann Arbor Public Schools as part of the Kennedy Center's Partners in Education Program. This year's Kennedy Center workshops are:

- *Harlem* with Kimberli Boyd
- *Living Pictures: A Theatrical Technique for Learning Across the Curriculum* with Sean Layne

Workshops focusing on UMS Youth Performances are:

- *The Steps and Rhythms of Urban Tap* with Susan Filipiak
- *Brazilian Music in the Classroom: An Introduction to Voices of Brazil* with Mary Catherine Smith
- *Kodo: An Introduction to Japanese Percussion* with Michael Gould

For information or to register for a workshop, please call 734.615.0122 or email [umsyouth@umich.edu](mailto:umsyouth@umich.edu).

### First Acts Program

The First Acts Program provides opportunities for students in grades 4-12 to attend select evening and weekend performances with \$6 tickets and reimbursed transportation costs. This year's First Acts roster includes Abbey Theatre of Ireland: Euripides' *Medea*, Orquestra de São Paulo, Gidon Kremer and Friends, Bolshoi Ballet: *Swan Lake*, Orchestre Philharmonique de Radio France, Boston Pops Esplanade Orchestra Holiday Concert, Ying Quartet, Stuttgart Chamber Orchestra, Muzsikás, and Bach Collegium Japan performing Bach's *St. Matthew Passion*.

For more information, please call 734.615.0122 or email [umsyouth@umich.edu](mailto:umsyouth@umich.edu).

## Special Discounts for Teachers and Students to Public Performances

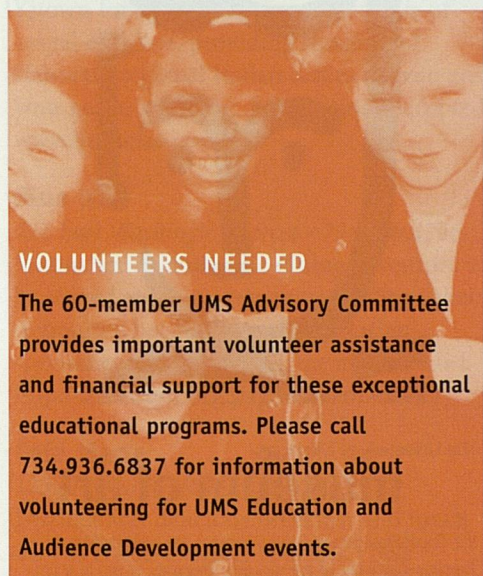
UMS offers group discounts to schools attending evening and weekend performances not offered through the First Acts Program. Please call the Group Sales Coordinator at 734.763.3100 for more information.

## The Kennedy Center Partnership

UMS and the Ann Arbor Public Schools are members of the Kennedy Center Partners in Education Program. Selected because of its demonstrated commitment to the improvement of education in and through the arts, the partnership team participates in collaborative efforts to make the arts integral to education and creates professional development opportunities for educators.

## Family Programming

These one-hour or full-length performances and activities are designed especially for children and families. UMS provides child-friendly, informational materials prior to family performances.



### VOLUNTEERS NEEDED

The 60-member UMS Advisory Committee provides important volunteer assistance and financial support for these exceptional educational programs. Please call 734.936.6837 for information about volunteering for UMS Education and Audience Development events.

## RESTAURANT & LODGING PACKAGES

**C**elebrate in style with dinner and a show! A delectable meal followed by priority, reserved seating at a performance by world-class artists sets the stage for a truly elegant evening. Add luxury accommodations to the package and make it a perfect getaway. UMS is pleased to announce its cooperative ventures with the following local establishments:

### The Artful Lodger Bed & Breakfast

*1547 Washtenaw Avenue*

*Call 734.769.0653 for reservations*

Join Ann Arbor's most theatrical host and hostess, Fred & Edith Leavis Bookstein, for a weekend in their massive stone house built in the mid-1800s for UM President Henry Simmons Frieze. This historic house, located just minutes from the performance halls, has been comfortably restored and furnished with contemporary art and performance memorabilia. The Bed & Breakfast for Music and Theater Lovers!

### Gratzi Restaurant

*326 South Main Street*

*Call 888.456.DINE for reservations*

Dinner package includes guaranteed reservations for a pre- or post-performance dinner (any selection from the special package menu plus a non-alcoholic beverage) and reserved "A" seats on the main floor at the performance. Packages are available for select performances.

### Vitoshia Guest Haus

*1917 Washtenaw Avenue*

*Call 734.741.4969 for reservations*

Join proprietors Christian and Kei Constantinov for afternoon tea, feather duvets and owls in the rafters in their expansive stone chalet home. Catering to "scholars, artists and the world-weary," this historic complex features

International Alliance of Theatrical Stage Employees,  
Moving Picture Technicians, Artists, and Allied Crafts of  
the United States, Its Territories, and Canada, AFL-CIO




Stagehands

Projectionists

Serving Ann Arbor area  
entertainment needs since 1914  
Phone or FAX (734) 944-7443

KEEP YOUR GAME IN TUNE  
AT  
HURON VALLEY TENNIS CLUB




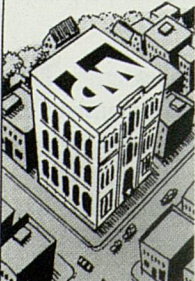
3235 Cherry Hill Rd.  
Ann Arbor, MI 48105  
734-662-5514  
Established 1970

**JOURNEYS**  
*No one so near can take you so far.*

Guided group, family and individual  
explorations of Asia, Africa, Australia,  
Antarctica and the Americas.

*Celebrating 25 years of  
Ann Arbor-based worldwide ecotourism.*

Request Color Catalog [www.journeys-intl.com](http://www.journeys-intl.com)  
**734-665-4407 • JOURNEYS**  
107 Aprill Drive, Ann Arbor 48103 (off Jackson Road)





Supporting the  
Community  
from the Heart of  
Ann Arbor

**DM**  
DOBSON-MCOMBER AGENCY, INC.  
Insurance and Risk Management  
(734) 741-0044  
Insuring You • Your Home  
Your Business • Your Car

**ARM**  
AUTOMATED RESOURCE MANAGEMENT INC.


**Application to Termination,  
Time Card to W2,  
We've Got You Covered.**



**Time & Attendance**      **Payroll**      **Human Resources**

**More Than Just Paychecks.**

**Automated Resource Management Inc.**  
(734) 994-6121      (800) 427-3279  
[www.armipay.com](http://www.armipay.com)



The University of Michigan  
**museum of art**

525 South State Street, Events Hotline: 734.763.UMMA  
Tuesday-Saturday, 10 am to 5 pm; Thursday, 10 am to 9 pm  
Sunday, noon to 5 pm <http://www.umich.edu/~umma/>



old English style décor, 10 guest rooms, each with their own private bath and many with a gas fireplace, a neo-Gothic parsonage, coach house tearoom, and a Frank Lloyd Wright-inspired church. The Vitosha Guest Haus also offers group discount rates and can accommodate conferences, musical and performing arts events, weddings and family celebrations. Call to inquire about special package prices.

### UMS PREFERRED RESTAURANT PROGRAM

*Visit and enjoy these fine area restaurants. Join us in thanking them for their generous support of UMS.*

#### **Arbor Brewing Co.**

114 East Washington - 734.213.1393  
Award-winning brewpub featuring a full bar and menu. Casual downtown dining. Smokeless restaurant and bar. Private parties for 25-150.

#### **Bella Ciao Trattoria**

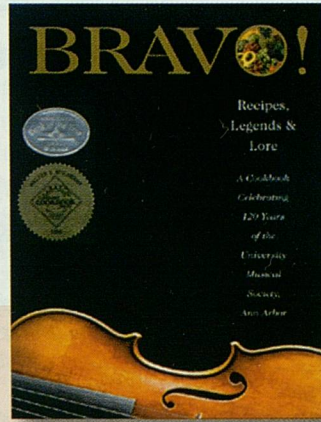
118 West Liberty - 734.995.2107  
Known for discreet dining with an air of casual elegance, providing simple and elaborate regional Italian dishes for you and your guests' pleasure. Reservations accepted. [www.bellacio.com](http://www.bellacio.com).

#### **Blue Nile**

221 East Washington Street - 734.998.4746  
Join us for an authentic dining adventure to be shared and long remembered. Specializing in poultry, beef, lamb and vegetarian specialties. Outstanding wine and beer list. <http://annarbor.org/pages/bluenile.html>

#### **Café Marie**

1759 Plymouth Road - 734.662.2272  
Distinct and delicious breakfast and lunch dishes, creative weekly specials. Fresh-squeezed juice and captivating cappuccinos! A sunny, casual, smoke-free atmosphere. Take out available.



### BRAVO!

"...a feast for all the senses!"  
— Graham Kerr

"Eclectic, exciting, and fascinating..."  
— Jacques Pepin

**UMS is proud to present *BRAVO!*, the award-winning cookbook filled with recipes, legends, and lore honoring 120 years of the University Musical Society.**

**Proceeds from sales of the book benefit UMS's nationally-acclaimed performance programs and its innovative education and outreach activities. Copies may be ordered through the UMS website ([www.ums.org](http://www.ums.org)) or by calling toll-free 877.238.0503.**

***Our Award Winning Service  
Brings Down The House***

- Audi • Honda
- Porsche • Volkswagen

*Voted Best Car Dealership six years  
in a row (97-02)  
by readers of Current Magazine*

**(734) 761-3200**  
[www.howardcooper.com](http://www.howardcooper.com)

**HOWARD  
COOPER**

**• Import Center •**

2575 South State Street  
Ann Arbor, MI 48104

**The City is Built to Music.**

- Lord, Alfred Tennyson



Miller Canfield is proud to be part of  
Ann Arbor's cultural community.  
Actively supporting the arts for 150 years.

**150**  
YEARS  
1852 - 2002

**MILLER  
CANFIELD**  
MILLER, CANFIELD, PADDOCK AND STONE, P.L.C.

101 North Main Street, 7th Floor, Ann Arbor, MI 48104  
734.663.2445 [www.millercanfield.com](http://www.millercanfield.com)

Michigan

New York

Washington, D.C.

Canada

Poland

Affiliated office  
in Florida

## The Chop House

322 South Main Street - 888.456.DINE

Ann Arbor's newest taste temptation. An elite American Chop House featuring U.S.D.A. prime beef, the finest in Midwestern grain-fed meat, and exceptional premium wines in a refined, elegant setting. Open nightly, call for reservations. [www.thechopouserestaurant.com](http://www.thechopouserestaurant.com)

## D'Amato's Neighborhood Restaurant

102 South First Street - 734.623.7400

D'Amato's Italian Restaurant (corner First St. & Huron) is casual dining at its best. Classic and contemporary Italian cuisine. Premium wines by the glass, international design. Piano Bar Thursday-Saturday. 'Four stars' by the *Detroit Free Press*, 9 out of 10 by the *Ann Arbor News*, open 7 days, moderate prices. [www.damatos.com](http://www.damatos.com).

Just downstairs is Goodnite Grace Jazz & Martini bar featuring talented local jazz groups and the best martinis in town. Never a cover or minimum, always great entertainment.

## Daniel's on Liberty

326 West Liberty Street - 734.663.3278

Located just west of Main Street in the restored Brehm estate. Fine American cuisine with a global fare. Full service catering, bakery, wedding cakes. Private meeting space available. [www.danielsonliberty.com](http://www.danielsonliberty.com)

## The Earle

121 West Washington - 734.994.0211

French and Italian dining, offering fresh fish, pastas, duck and beef tenderloin accompanied by our house-made desserts. *Wine Spectator's* "Best of Award of Excellence" 1991-2002.

## Gandy Dancer

401 Depot Street - 734.769.0592

Located in the historic 1886 railroad depot. Specializing in fresh seafood. Lunches Monday-Friday 11:30-3:30. Dinners Monday-Saturday 4:30-10, Sunday 3:30-9. Award-winning Sunday brunch 10:00-2:00. Reservations recommended.

## Gratzi

326 South Main Street - 888.456.DINE

Celebrated, award-winning Italian cuisine served with flair and excitement. Sidewalk and balcony seating. Open for lunch and dinner. Reservations accepted. [www.gratzirestaurant.com](http://www.gratzirestaurant.com)

## The Kerrytown Bistro

At the corner of 4th Avenue and Kingsley Street in Kerrytown - 734.994.6424

The Kerrytown Bistro specializes in fine French Provincial inspired cuisine, excellent wines and gracious service in a relaxed, intimate atmosphere. Hours vary, reservations accepted.

## La Dolce Vita

322 South Main Street - 734.669.9977

Offering the finest in after-dinner pleasures. Indulge in the delightful sophistication of gourmet desserts, fancy pastries, cheeses, fine wines, ports, sherries, martinis, rare scotches, hand-rolled cigars and much more. Open nightly. [www.msventures.com](http://www.msventures.com)

## Palio

347 South Main Street - 888.456.DINE

Zestful country Italian cooking, fresh flavors inspired daily. Featuring the best rooftop seating in town. Open for dinner nightly. Reservations accepted, large group space available. [www.paliorestaurant.com](http://www.paliorestaurant.com)



## LAND ARCHITECTS, Inc.

Ann Arbor, Michigan

LANDSCAPE ARCHITECTURAL DESIGN  
HISTORIC GARDEN DESIGN & RESTORATION  
WILDLIFE HABITAT ENHANCEMENT  
SITE CONSTRUCTION

734.747.7938

[www.landarcs.com](http://www.landarcs.com)

## UFER & CO. INSURANCE

*Music washes away from the soul...  
the dust of everyday life.*

*-Averbach*

[www.uferinsurance.com](http://www.uferinsurance.com)

734-668-4166

Proud Supporters of the University Musical Society

Building Fine Homes In Harmony  
With Our Clients Since 1971

Alex and Betsy de Parry  
**ANN ARBOR BUILDERS, INC.**

(734) 761-8990

[www.annarborbuilders.com](http://www.annarborbuilders.com)

*It's more than a music lesson,  
it's a song of the heart.*

*Music is just part of the enriched whole learning experience at the Waldorf Schools, which includes art, languages, science, math, history, and literature. Set in a caring environment of exploration and imagination, we offer a unique program that allows your child's talents and abilities to flourish. Our goal is to help develop balanced, multifaceted individuals. As part of a worldwide community of 640 schools, we are pleased to offer K through grade 12 education.*

Please call us  
for times and  
dates of our  
Introductory  
Evenings and  
Open Houses

### Newport Campus (K-8)

2775 Newport Rd., Ann Arbor, MI 48103 Ph. (734) 995-4141

### Pontiac Trail Campus (9-12)

2230 Pontiac Trail Rd., Ann Arbor, MI 48105 Ph. (734) 669-9394

**Magically Suspended,  
Your Diamond Sparkles Brilliantly  
in the Kretchmer Tension Ring.**



## BERESH JEWELERS

Parklane Twin Towers  
Hubbard Dr. & Southfield Fwy.

Dearborn, MI 48126

800.551.1250

### Real Seafood Company

341 South Main Street - 888.456.DINE

As close to the world's oceans as your taste can travel. Serving delightfully fresh seafood and much more. Open for lunch and dinner. Reservations accepted.

[www.realseafoodcorerestaurant.com](http://www.realseafoodcorerestaurant.com)

### Red Hawk Bar & Grill

316 South State Street - 734.994.4004

Neighborhood bar & grill in campus historic district, specializing in creative treatments of traditional favorites. Full bar, with a dozen beers on tap. Lunch and dinner daily. Weekly specials. Smoke-free. No reservations.

### Seva

314 East Liberty Street - 734.662.1111

Seva has provided fresh, imaginative vegetarian cuisine since 1973. All dishes, including desserts, are made in-house daily. Be sure to look over our extensive beverage menu.

### Weber's Restaurant

3050 Jackson Avenue - 734.665.3636

Weber's casual-to-elegant atmosphere and fine American cuisine features their famous prime ribs of beef, live lobster, aged steaks and jet-fresh seafood.

### Zanzibar

216 South State Street - 734.994.7777

Contemporary American food with Mediterranean & Asian influences. Full bar featuring classic and neo-classic cocktails, thoughtfully chosen wines and an excellent selection of draft beer. Spectacular desserts. Lunch, dinner, Sunday brunch and outside dining. Space for private and semi-private gatherings up to 120. Smoke-free. Reservations encouraged.

## UMS DELICIOUS EXPERIENCES

**B**ack by popular demand, friends of UMS are hosting a variety of dining events to raise funds for our nationally recognized education programs. Thanks to the generosity of the hosts, all proceeds from these delightful dinners go to support these important activities. Treat yourself, give a gift of tickets, or come alone and meet new people! For more information or to receive a brochure, call 734.936.6837.





## Maintaining a delicate balance.

Balance means finding time for the extras, the activities that bring beauty and grace into our lives. At Key and McDonald Investments, we're proud to support the University Musical Society. Because as long as these dancers are in motion, we'll be moved.

1.800.KEY2YOU®  
Key.com

Key.com is a federally registered service mark of KeyCorp.



Maestro Lipsky

9/28/02

*Beethoven* Symphony No. 9

*Shostakovich* Symphony No. 9

10/19/02

*Bernstein* Serenade

*Mozart* Eine Kleine  
Nachtmusik

*Brahms* Serenade No. 1

11/9/02

*Bizet* Carmen

11/10/02

*Family Performance:*

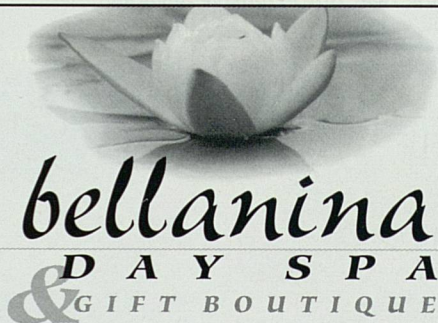
*Beethoven* Lives Upstairs

A N N A R B O R  
*Symphony Orchestra*  
MUSIC IN THE KEY OF A<sub>2</sub>

994-4801

[www.a2so.com](http://www.a2so.com)

Join the A<sup>2</sup>SO in Ann Arbor's historic Michigan Theater. Tickets are on sale now.



## bellanina DAY SPA & GIFT BOUTIQUE

NEW Feng Shui-designed spa

oxygen bar

color therapy treatments

hydrotherapy tub

sauna & steam room

Relocating to our new spa late fall...

203 NORTH FOURTH AVENUE  
(across from the People's Food Co-op)

734.747.8517

[www.bellanina.com](http://www.bellanina.com)

# UMS support

**U**MS volunteers are an integral part of the success of our organization. There are many areas in which volunteers can lend their expertise and enthusiasm. We would like to welcome you to the UMS family and involve you in our exciting programming and activities. We rely on volunteers for a vast array of activities, including staffing the education residency activities, assisting in artist services and mailings, escorting students for our popular youth performances and a host of other projects. Call 734.936.6837 to request more information.

## ADVISORY COMMITTEE

**T**he 48-member UMS Advisory Committee serves an important role within UMS. From ushering for our popular Youth Performances to coordinating annual fundraising events, such as the Ford Honors Program gala and "Delicious Experiences" dinners, to marketing *Bravo!*, UMS's award-winning cookbook, the Committee brings vital volunteer assistance and financial support to our ever-expanding educational programs. If you would like to become involved with this dynamic group, please call 734.936.6837 for more information.

## SPONSORSHIP & ADVERTISING

### Advertising

When you advertise in the UMS program book you gain season-long visibility among ticket-buyers while enabling an important tradition of providing audiences with the detailed program notes, artist biographies, and program descriptions that are so important to performance experience. Call 734.647.4020 to learn how your business can benefit from advertising in the UMS program book.

### Sponsorship

As a UMS corporate sponsor, your organization comes to the attention of an educated, diverse and growing segment of not only Ann Arbor, but all of southeastern Michigan. You make possible one of our community's cultural treasures, and also receive numerous benefits from your investment. For example, UMS offers you a range of programs that, depending on your level of support, provide a unique venue for:

- **Enhancing corporate image**
- **Cultivating clients**
- **Developing business-to-business relationships**
- **Targeting messages to specific demographic groups**
- **Making highly visible links with arts and education programs**
- **Recognizing employees**
- **Showing appreciation for loyal customers**

For more information, please call 734.647.1176.

# Cast Yourself in a Starring Role

Become a Member of the University Musical Society

The exciting programs described in the program book are made possible only by the generous support of UMS members—dedicated friends who value the arts in our community and step forward each year to provide financial support. Ticket revenue covers only 56% of the costs associated with presenting our season of vibrant performances and related educational programs. UMS members—through their generous annual contributions—help make up the difference. In return, members receive a wide variety of exciting benefits, including the opportunity to purchase tickets prior to public sale.

For more information on membership, please call the Development Office at 734.647.1178. To join now, please complete the form below and mail to the address printed at the bottom of this page.

## Presenter's Circle

### \$25,000 Soloist (\$150)\*

- For information about this very special membership group, call the Development Office at 734.647.1175.

### \$10,000–\$24,999 Maestro (\$150)\*

- Virtuoso benefits, plus:
- Opportunity to be a concert or supporting sponsor for a selected performance on any series

### \$7,500–\$9,999 Virtuoso (\$150)\*

- Concertmaster benefits, plus:
- Guest of UMS Board at a special thank-you event

### \$5,000–\$7,499 Concertmaster (\$150)\*

- Producer benefits, plus:
- Opportunity to be a concert sponsor or supporting sponsor for a selected Chamber Arts or Monogram Series performance
- Opportunity to meet artist backstage as guest of UMS president
- Invitation to serve as honorary stage crew for one performance

### \$3,500–\$4,999 Producer (\$150)\*

- Leader benefits, plus:
- Opportunity to be a supporting sponsor for a selected Monogram Series performance
- Complimentary valet parking for Choral Union Series performances at UM venues.
- Invitation to selected Audience Development youth performances

### \$2,500–\$3,499 Leader (\$85)\*

- Principal benefits, plus:
- Opportunity to purchase prime seats up to 48 hours before performance (subject to availability)
- Complimentary parking passes for all UMS concerts at UM venues

### \$1,000–\$2,499 Principal (\$55)\*

- Benefactor benefits, plus:
- Ten complimentary one-night parking passes for UMS concerts
- Priority subscription handling
- Priority seating for individual Choral Union and Chamber Arts Advance ticket purchases
- Invitation to all Presenters Circle events

## Friends

### \$500–\$999 Benefactor

- Associate benefits, plus:
- Invitation to one working rehearsal (subject to artist approval)
- Half-price tickets to selected performances

### \$250–\$499 Associate

- Advocate benefits, plus:
- Listing in UMS Program

### \$100–\$249 Advocate

- UMS Card, providing discounts at Ann Arbor restaurants, music stores and shops
- Advance notice of performances
- Advance ticket sales
- One-year subscription to *Notes*, the UMS newsletter

Please check your desired giving level above and complete the form below or become a member online at [www.ums.org](http://www.ums.org).

Name(s)

(Print names exactly as you wish them to appear in UMS listings.)

Address

City

State

Zip

Day Phone

Eve. Phone

E-mail

Comments or Questions

Please make checks payable to University Musical Society

Gifts of \$50 or more may be charged to:  VISA  MasterCard  Discover  American Express

Account #

Expiration Date

Signature

- I do not wish to receive non-deductible benefits, thereby increasing the deductibility of my contributions.
- My company will match this gift. Matching gift form enclosed.

Send gifts to: University Musical Society, 881 N. University, Ann Arbor, MI 48109-1011



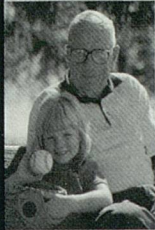
## G L A C I E R H I L L S



## Retirement Living by Choice

### A Choice Of Neighborhoods

The Meadows, now under construction, will feature spacious apartment homes and villas for active, independent seniors. The Manor offers independent living with catered services. And for those who need assisted living, there are beautiful apartments with personal care services in a specially designed program.



### A Choice Of Amenities

Several dining rooms, library, computer lab, gift shop, scenic walking trails, deliveries from local merchants, around-the-town shuttle service... nothing is overlooked in the way of amenities. There are also activities in everything from fitness and bridge to creative writing and the Internet. Plus a year-round schedule of day trips, music, movies, lectures, and other social and cultural events.



### A Choice Of Services

Glacier Hills is the only retirement community in the Ann Arbor area to offer a complete continuum of care. That means our residents have access to whatever assistance they need whenever they need it — from routine housekeeping to round-the-clock nursing care.



## Glacier Hills

A CCAC Accredited Retirement Community  
Serving Ann Arbor Since 1973  
[www.glacierhills.org](http://www.glacierhills.org)



1200 Earhart Road, Ann Arbor, Michigan 48105, Telephone: (734) 769-6410

## INTERNSHIPS & COLLEGE WORK-STUDY

**I**nternships with UMS provide experience in performing arts administration, marketing, publicity, promotion, production and arts education. Semester- and year-long internships are available in many of UMS's departments. For more information, please call 734.615.1444.

**S**tudents working for UMS as part of the College Work-Study program gain valuable experience in all facets of arts management including concert promotion and marketing, fundraising, arts education, event planning and production. If you are a University of Michigan student who receives work-study financial aid and who is interested in working at UMS, please call 734.615.1444.

## USHERS

**W**ithout the dedicated service of UMS's Usher Corps, our events would not run as smoothly as they do. Ushers serve the essential functions of assisting patrons with seating, distributing program books and providing that personal touch which sets UMS events above others.

The UMS Usher corps comprises over 400 individuals who volunteer their time to make your concert-going experience more pleasant and efficient. The all-volunteer group attends an orientation and training session each fall or winter. Ushers are responsible for working at every UMS performance in a specific venue for the entire concert season.

If you would like information about becoming a UMS volunteer usher, call the UMS usher hotline at 734.913.9696.

## SUPPORT FOR THE UNIVERSITY MUSICAL SOCIETY

This performance—and all of UMS's nationally recognized artistic and educational programs—would not be possible without the generous support of the community. UMS gratefully acknowledges the following individuals, businesses, foundations and government agencies—and those who wish to remain anonymous—and extends its deepest gratitude for their support. This list includes current donors as of August 7, 2002. Every effort has been made to ensure its accuracy. Please call 734.647.1178 with any errors or omissions.

## SOLOISTS

\$25,000 or more

Randall and Mary Pittman  
Philip and Kathleen Power

## MAESTROS

\$10,000-\$24,999

Carl and Isabelle Brauer  
Dr. Kathleen G. Charla  
Peter and Jill Corr  
Ronnie and Sheila Cresswell  
Hal and Ann Davis  
Beverly and Gerson Geltner  
Jim and Millie Irwin  
Robert and Pearson Macek  
Charlotte McGeoch  
Tom and Debby McMullen  
Ann Meredith  
Mr. and Mrs. Irving Rose

## VIRTUOSI

\$7,500-\$9,999

Maurice and Linda Binkow  
Leo and Kathy Legatski  
Prudence and Amnon Rosenthal  
Edward and Natalie Surovell

## CONCERTMASTERS

\$5,000-\$7,499

Michael Allemang  
Herb and Carol Amster  
Douglas D. Crary  
Dennis Dahlmann  
David and Phyllis Herzig  
Doug and Gay Lane  
Paul and Ruth McCracken  
Loretta M. Skewes  
Lois A. Theis  
Marina and Robert Whitman  
Ann and Clayton Wilhite

## PRODUCERS

\$3,500-\$4,999

Kathy Benton and Robert Brown  
David and Pat Clyde  
Katharine and Jon Cosovich  
Mr. and Mrs. Thomas C. Evans  
Michael and Sara Frank  
Debbie and Norman Herbert  
Dr. Toni Hoover  
Shirley Y. and Thomas E. Kauper  
Don and Judy Dow Rumelhart  
Herbert Sloan  
Lois and John Stegeman  
Marion T. Wirick and  
James N. Morgan

## LEADERS

\$2,500-\$3,499

Bob and Martha Ause  
Emily W. Bandera, M.D.  
Bradford and Lydia Bates  
Raymond and Janet Bernreuter  
Barbara Everitt Bryant

Edward and Mary Cady  
Maurice and Margo Cohen  
Mr. Michael J. and Dr. Joan S. Crawford  
Jack and Alice Dobson  
Jim and Patsy Donahey  
Ken and Penny Fischer  
John and Esther Floyd  
Ilene H. Forsyth  
Betty-Ann and Daniel Gilliland  
Sue and Carl Gingles  
Jeffrey B. Green  
Linda and Richard Greene  
Carl and Charlene Herstein  
Janet Woods Hoobler  
John and Patricia Huntington  
Keki and Alice Irani  
Dorian R. Kim  
Paula and Henry Lederman  
Marc and Jill Lippman  
Judy and Roger Maugh  
Charles H. Nave  
Mrs. Charles Overberger (Betty)  
Jim and Bonnie Reece  
John and Dot Reed  
Barbara A. Anderson and  
John H. Romani  
Maya Savarino  
Don and Carol Van Curler  
Mrs. Francis V. Viola III  
Don and Toni Walker  
B. Joseph and Mary White

## PRINCIPALS

\$1,000-\$2,499

Dr. and Mrs. Gerald Abrams  
Mrs. Gardner Ackley  
Jim and Barbara Adams  
Bernard and Raquel Agranoff  
Jonathan W. T. Ayers  
Lesli and Christopher Ballard  
Dr. and Mrs. Robert Bartlett

Astrid B. Beck and David Noel Freedman  
 Ralph P. Beebe  
 Patrick and Maureen Belden  
 Harry and Betty Benford  
 Ruth Ann and Stuart J. Bergstein  
 L. S. Berlin  
 Suzanne A. and Frederick J. Beutler  
 Joan Akers Binkow  
 Elizabeth and Giles G. Bole  
 Howard and Margaret Bond  
 Bob and Sue Bonfield  
 Laurence and Grace Boxer  
 Dale and Nancy Briggs  
 Virginia Sory Brown  
 Jeannine and Robert Buchanan  
 Lawrence and Valerie Bullen  
 Mr. and Mrs. Richard J. Burstein  
 Letitia J. Byrd  
 Amy and Jim Byrne  
 Betty Byrne  
 Barbara and Albert Cain  
 Jean W. Campbell  
 Michael and Patricia Campbell  
 Thomas and Marilou Capo  
 Edwin and Judith Carlson  
 Jean and Kenneth Casey  
 Janet and Bill Cassebaum  
 Anne Chase  
 James S. Chen  
 Janice A. Clark  
 Mr. and Mrs. John Alden Clark  
 Leon and Heidi Cohan  
 Mr. Ralph Conger  
 Carolyn and L. Thomas Conlin  
 Jim and Connie Cook  
 Jane Wilson Coon  
 Anne and Howard Cooper  
 Hugh and Elly Rose-Cooper  
 Paul N. Courant and Marta A. Manildi  
 Malcolm and Juanita Cox  
 George and Connie Cress  
 Kathleen Crispell and Thomas Porter  
 Judy and Bill Crookes  
 Peter and Susan Darrow  
 Pauline and Jay J. De Lay  
 Lloyd and Genie Dethloff  
 Lorenzo DiCarlo and Sally Stegeman DiCarlo  
 Macdonald and Carolin Dick  
 Steve and Lori Director  
 Molly and Bill Dobson  
 Al Dodds  
 Elizabeth A. Doman  
 Dr. and Mrs. Theodore E. Dushane  
 Mr. and Mrs. John R. Edman  
 Martin and Rosalie Edwards  
 Leonard and Madeline Eron  
 Bob and Chris Euritt  
 Claudine Farrand and Daniel Moerman  
 Eric Fearon and Kathy Cho  
 David and Jo-Anna Featherman  
 Yi-tsi M. and Albert Feuerwerker  
 Mrs. Gerald J. Fischer (Beth B.)  
 Ray and Patricia Fitzgerald

Otto and Lourdes E. Gago  
 Marilyn G. Gallatin  
 Bernard and Enid Galler  
 Marilyn Tsao and Steve Gao  
 Charles and Rita Gelman  
 James and Cathie Gibson  
 William and Ruth Gilkey  
 Drs. Sid Gilman and Carol Barbour  
 Richard and Cheryl Ginsburg  
 Paul and Anne Glendon  
 Alvia G. Golden and Carroll Smith-Rosenberg  
 Frances Greer  
 John and Helen Griffith  
 Leslie and Mary Ellen Guinn  
 Julian and Diane Hoff  
 Robert M. and Joan F. Howe  
 Sun-Chien and Betty Hsiao  
 Dr. H. David and Dolores Humes  
 Ann D. Hungerman  
 Susan and Martin Hurwitz  
 Stuart and Maureen Isaac  
 Wallie and Janet Jeffries  
 Timothy and Jo Wiese Johnson  
 Robert L. and Beatrice H. Kahn  
 Herbert Katz  
 Richard and Sylvia Kaufman  
 David and Sally Kennedy  
 Robert and Gloria Kerry  
 Connie and Tom Kinnear  
 Diane Kirkpatrick  
 Jim and Carolyn Knake  
 Victoria F. Kohl and Thomas Tecco  
 Samuel and Marilyn Krimm  
 Bud and Justine Kulka  
 Ko and Sumiko Kurachi  
 Barbara and Michael Kusisto  
 Jill M. Latta and David S. Bach  
 Ted and Wendy Lawrence  
 Laurie and Robert LaZebnik  
 Peter Lee and Clara Hwang  
 Carolyn and Paul Lichter  
 Evie and Allen Lichter  
 Lawrence and Rebecca Lohr  
 Leslie and Susan Loomans  
 John and Cheryl MacKrell  
 Natalie Matovinovic  
 Chandler and Mary Matthews  
 Margaret W. Maurer  
 Susan McClanahan and Bill Zimmerman  
 Joseph McCune and Georgiana Sanders  
 Ted and Barbara Meadows  
 Andy and Candice Mitchell  
 Lester and Jeanne Monts  
 Grant W. Moore  
 Alan and Sheila Morgan  
 Julia S. Morris  
 Cruse W. and Virginia Patton Moss  
 Eva L. Mueller  
 Martin Neuliep and Patricia Pancioli  
 M. Haskell and Jan Barney Newman  
 William and Deanna Newman  
 Eulalie Nohrden  
 Marylen and Harold Oberman

Gilbert Omenn and Martha Darling  
 Mrs. William B. Palmer  
 William C. Parkinson  
 Dory and John D. Paul  
 Margaret and Jack Petersen  
 Elaine and Bertram Pitt  
 Eleanor and Peter Pollack  
 Donald H. Regan and Elizabeth Axelson  
 Ray and Ginny Reilly  
 Maria and Rusty Restuccia  
 Kenneth J. Robinson  
 Mrs. Doris E. Rowan  
 Dr. Nathaniel H. Rowe  
 James and Adrienne Rudolph  
 Craig and Jan Ruff  
 Alan and Swanna Salties  
 Dick and Norman Sarns  
 Meeyung and Charles R. Schmitter  
 Mrs. Richard C. Schneider  
 Rosalie and David Schottenfeld  
 Sue Schroeder  
 Steven R. and Jennifer L. Schwartz  
 Janet and Michael Shatusky  
 Helen and George Siedel  
 Donald C. and Jean M. Smith  
 Susan M. Smith  
 Carol and Irving Smokler  
 Gus and Andrea Stager  
 Curt and Gus Stager  
 David and Ann Stager  
 James and Nancy Stanley  
 Michael and Jeannette Bittar Stern  
 Victor and Marlene Steoffler  
 Jan and Nub Turner  
 Susan B. Ullrich  
 Joyce A. Urba and David J. Kinsella  
 Michael L. Van Tassel  
 Elly Wagner  
 Florence S. Wagner  
 John Wagner  
 Willes and Kathleen Weber  
 Karl and Karen Weick  
 Robert O. and Darragh H. Weisman  
 Angela and Lyndon Welch  
 Marcy and Scott Westerman  
 Roy and JoAn Wetzel  
 Harry C. White and Esther R. Redmount  
 Max Wicha and Sheila Crowley  
 Phyllis B. Wright  
 Paul Yhouse  
 Ed and Signe Young  
 Gerald B. and Mary Kay Zelenock

## BENEFACTORS

\$500-\$999

Michael and Marilyn Agin  
 Robert Ainsworth  
 Dr. and Mrs. Robert G. Aldrich  
 Michael and Suzan Alexander  
 Anastasios Alexiou  
 Dr. and Mrs. David G. Anderson  
 Dr. and Mrs. Rudi Ansbacher

*Benefactors, continued*

Elaine and Ralph Anthony  
Janet and Arnold Aronoff  
Norman E. Barnett  
Mason and Helen Barr  
Lois and David Baru  
Dr. Wolfgang and Eva Bernhard  
John Blankley and  
Maureen Foley  
Jane Bloom, MD and  
William L. Bloom  
Charles and Linda Borgsdorf  
David and Sharon Brooks  
Morton B. and Raya Brown  
Sue and Noel Buckner  
Trudy and Jonathan Bulkley  
Dr. Frances E. Bull  
H. D. Cameron  
Douglas and Marilyn Campbell  
Bruce and Jean Carlson  
Jack and Wendy Carman  
Marshall and Janice Carr  
Carolyn M. Carthy and  
Thomas H. Haug  
Hubert and Ellen Cohen  
Susan and Arnold Coran  
Jean Cunningham and  
Fawwaz Ulaby  
Roderick and Mary Ann Daane  
Della DiPietro and  
Jack Wagoner, M.D.  
Charles and Julia Eisendraith  
Patricia Enns  
Ms. Julie A. Erhardt  
Stefan S. and Ruth S. Fajans  
Dr. and Mrs. S.M. Farhat  
Dede and Oscar Feldman  
Dr. and Mrs. James Ferrara  
Sidney and Jean Fine  
Carol Finerman  
Clare M. Fingerle  
Guillermo Flores  
Mr. and Mrs. George W. Ford  
Phyllis W. Foster  
Betsy Foxman and  
Michael Boehnke  
Maxine and Stuart Frankel  
Foundation  
Dr. Ronald Freedman  
Professor and  
Mrs. David M. Gates  
Drs. Steve Geiringer and  
Karen Bantel  
Thomas and Barbara Gelehrter  
Charles and Rita Gelman  
Cozette Grabb  
Elizabeth Needham Graham  
Dr. and Mrs. Lazar J. Greenfield  
David and Kay Gugala  
Carl and Julia Guldberg  
Don P. Haefner and  
Cynthia J. Stewart  
Mr. and Mrs. Elmer F. Hamel  
Robert and Jean Harris  
Paul Hysen and Jeanne Harrison  
Clifford and Alice Hart  
Jeannine and Gary Hayden  
Henry R. and Lucia Heinold  
Mrs. W.A. Hiltner

John H. and  
Maurita Peterson Holland  
Drs. Linda Samuelson and  
Joel Howell  
Mr. and Mrs. William Hufford  
Eileen and Saul Hymans  
John and Gretchen Jackson  
Jean Jacobson  
Jim and Dale Jerome  
John Kennedy  
Dick and Pat King  
Hermine R. Klingler  
Philip and Kathryn Klintworth  
Joseph and Marilyn Kokoszka  
Lee and Teddi Landes  
Mr. John K. Lawrence  
Mr. and Mrs. Fernando S. Leon  
Jacqueline H. Lewis  
Daniel Little and  
Bernadette Lintz  
E. Daniel and Kay Long  
Brigitte and Paul Maassen  
Jeff Mason and Janet Netz  
Griff and Pat McDonald  
Deanna Relyea and  
Piotr Michalowski  
Jeanette and Jack Miller  
Myrna and Newell Miller  
Brian and Jacqueline Morton  
Cyril Moscow  
Edward C. Nelson  
Dr. and Mrs. Frederick C. O'Dell  
Mr. and Mrs. James C. O'Neill  
Lorraine B. Phillips  
Roy and Winnifred Pierce  
Stephen and Bettina Pollock  
Richard H. and Mary B. Price  
Wallace and Barbara Prince  
Mrs. Gardner C. Quarton  
Mrs. Joseph S. Radom  
Dr. Jeanne Raisler and Dr.  
Jonathan Allen Cohn  
Rudolph and Sue Reichert  
Molly Resnik and John Martin  
H. Robert and Kristin Reynolds  
Jay and Machree Robinson  
Peter C. Schaberg and  
Norma J. Amrhein  
Ann and Thomas J. Schriber  
Erik and Carol Serr  
Julianne and Michael Shea  
Thomas and Valerie Yova Sheets  
Howard and Aliza Shevrin  
Pat Shure  
Frances U. and Scott K. Simonds  
Irma J. Sklenar  
Alene and Stephanie Smith  
Lloyd and Ted St. Antoine  
James Stewart and Jay Pekala  
Jim Stewart  
Jeff Stoller  
Prof. Louis J. and  
Glennis M. Stout  
Dr. and Mrs. Stanley Strasius  
Charlotte B. Sundelson  
Bob and Betsy Teeter  
Elizabeth H. Thieme  
Christina and Thomas Thoburn  
William C. Tyler

Dr. Sheryl S. Ulin and  
Dr. Lynn T. Schachinger  
Dr. and Mrs. Samuel C. Ursu  
Charlotte Van Curler  
Jack and Marilyn van der Velde  
Mary Vanden Belt  
Kate and Chris Vaughan  
Joyce L. Watson and  
Martin Warshaw  
Robin and Harvey Wax  
Phil and Nancy Wedemeyer  
Raoul Weisman and  
Ann Friedman  
Dr. Steven W. Werns  
Brymer Williams  
Max and Mary Wisgerhof  
Dean Karen Wolff  
David and April Wright

## ASSOCIATES

\$250-\$499

Mr. and Mrs. Roy I. Albert  
Helen and David Aminoff  
David and Katie Andrea  
Harlene and Henry Appelman  
Jeff and Deborah Ash  
Mr. and Mrs. Arthur J. Ashe, III  
Dwight T. Ashley  
Dan and Monica Atkins  
Eric M. and Nancy Aupperle  
Robert L. Baird  
Laurence R. and  
Barbara K. Baker  
Lisa and Jim Baker  
Barbara and Daniel Balbach  
Paulett Banks  
John R. Bareham  
David and Monika Barera  
Mrs. Jere M. Bauer  
Gary Beckman and Karla Taylor  
Professor and Mrs. Erling  
Blondal Bengtsson  
Dr. and Mrs. Ronald M. Benson  
Joan and Rodney Bentz  
James A. Bergman and  
Penelope Hommel  
Steven J. Bernstein  
Donald and Roberta Blitz  
Tom and Cathie Bloem  
David and Martha Bloom  
Dr. and Mrs. Bogdasarian  
Victoria C. Botek and William  
M. Edwards  
Dr. and Mrs. Ralph Bozell  
Paul and Anna Bradley  
June and Donald R. Brown  
Donald and Lela Bryant  
Robert and Victoria Buckler  
Margaret E. Bunge  
Susan and Oliver Cameron  
Margot Campos  
Jeannette and Robert Carr  
Dr. and Mrs. Joseph C. Cerny  
Thomas Champagne and  
Stephen Savage

Dr. Kyung and Young Cho  
Kwang and Soon Cho  
Robert J. Cierzniewski  
Reginald and Beverly Ciokajlo  
Brian and Cheryl Clarkson  
Carolyn and L. Thomas Conlin  
Nan and Bill Conlin  
Clifford and Laura Craig  
Merle and Mary Ann Crawford  
Peter C. and Lindy M. Cubba  
Richard J. Cunningham  
Marcia A. Dalbey  
Dr. and

Mrs. Charles W. Davenport  
Ed and Ellie Davidson  
Peter A. and Norma Davis  
John and Jean Debbink  
Elena and Nicholas Delbanco  
Richard and Sue Dempsey  
Elizabeth Dexter  
Jack and Claudia Dixon  
Judy and Steve Dobson  
Heather and Stuart Dombey  
Dr. Edward F. Domino  
Thomas and Esther Donahue  
John Dryden and Diana Raimi  
Rhetaugh Graves Dumas  
Swati Dutta  
Martin and Rosalie Edwards  
Dr. Alan S. Eiser  
Judge and Mrs. S. J. Elden  
Ethel and Sheldon Ellis  
Mr. John W. Etsweiler, III  
Mark and Karen Falahee  
Elly and Harvey Falit  
Dr. John W. Farah  
Drs. Michael and  
Bonnie Fauman  
Karl and Sara Fiegenschuh  
Dr. James F. Filgas  
Susan Filipiak/Swing City  
Dance Studio

Herschel Fink  
C. Peter and Bev A. Fischer  
Gerald B. and  
Catherine L. Fischer  
Howard and Margaret Fox  
Jason I. Fox  
Lynn A. Freeland  
Dr. Leon and Marcia Friedman  
Lela J. Fuerster  
Mr. and Mrs. William Fulton  
Harriet and Daniel Fusfeld  
Chuck and Rita Gelman  
Deborah and Henry Gerst  
Elmer G. Gilbert and  
Lois M. Verbrugge  
Matthew and Debra Gildea  
James and Janet Gilsdorf  
Maureen and David Ginsburg  
Albert and Almeda Girod  
Irwin Goldstein and  
Martha Mayo  
Enid M. Gosling  
Charles and Janet Goss  
Jerry M. and Mary K. Gray  
Lila and Bob Green  
Victoria Green and  
Matthew Toschlog

Sandra Gregerman  
 Bill and Louise Gregory  
 Raymond and Daphne M. Grew  
 Mark and Susan Griffin  
 Werner H. Grill  
 Dick and Marion Gross  
 Bob and Jane Grover  
 Susan and John Halloran  
 Claribel Halstead  
 Tom Hammond  
 Lourdes S. Bastos Hansen  
 David B. and Colleen M. Hanson  
 Martin D. and Connie D. Harris  
 Nina E. Hauser  
 Kenneth and Jeanne Heining  
 J. Lawrence and Jacqueline  
 Stearns Henkel  
 Dr. and Mrs. Keith S. Henley  
 Kathy and Rudi Hentschel  
 Louise Hodgson  
 Mr. and Mrs. William B. Holmes  
 John I. Hritz, Jr.  
 Jane H. Hughes  
 Dr. and Mrs. Ralph M. Hulet  
 Jewel F. Hunter  
 Thomas and  
 Kathryn Huntzicker  
 Robert B. Ingling  
 Margaret and Eugene Ingram  
 Kent and Mary Johnson  
 Paul and Olga Johnson  
 Dr. Marilyn S. Jones  
 Stephen Josephson and  
 Sally Fink  
 Douglas and Mary Kahn  
 Dr. and Mrs. Mark S. Kaminski  
 George Kaplan and Mary Haan  
 Arthur A. Kaselemas  
 Professor Martin E. Katz  
 Julie and Phil Kearney  
 James A. Kelly and  
 Mariam C. Noland  
 John B. and Joanne Kennard  
 Frank and Patricia Kennedy  
 Mr. Roland G. Kibler  
 Donald F. and Mary A. Kiel  
 Mrs. Rhea K. Kish  
 Paul and Dana Kissner  
 James and Jane Kister  
 Dr. David E. and  
 Heidi Castleman Klein  
 Steve and Shira Klein  
 Laura Klem  
 Anne Kloack  
 Thomas and Ruth Knoll  
 Dr. and Mrs. Melvyn Korobkin  
 Amy Sheon and Marvin Krislov  
 Bert and Geraldine Kruse  
 David W. Kuehn and  
 Lisa A. Tedesco  
 Mrs. David A. Lanius  
 Mr. and Mrs. Henry M. Lapeza  
 Neal and Anne Laurance  
 Beth and George LaVoie  
 Elaine and David Lebenbom  
 Cyril and Ruth Leder  
 John and Theresa Lee  
 Frank Legacki and  
 Alicia Torres

Jim and Cathy Leonard  
 Carolyn Leopard  
 Donald J. and  
 Carolyn Dana Lewis  
 Ken and Jane Lieberthal  
 Leons and Vija Liepa  
 Dr. and  
 Mrs. Richard H. Lineback  
 Rod and Robin Little  
 Vi-Cheng and Hsi-Yen Liu  
 Ronald Longhofer and  
 Norma McKenna  
 Richard and Stephanie Lord  
 Christopher and Carla Loving  
 Charles and Judy Lucas  
 Carl J. Lutkehaus  
 Edward and Barbara Lynn  
 Pamela J. MacKintosh  
 Virginia Mahle  
 Latika Mangrulkar  
 Melvin and Jean Manis  
 Ann W. Martin and Russ Larson  
 James E. and Barbara Martin  
 Sally and Bill Martin  
 Vincent and Margot Massey  
 Dr. and Mrs. Ben McCallister  
 Margaret E. McCarthy  
 Ernest and Adele McCarus  
 Margaret and  
 Harris McClamroch  
 James McIntosh  
 Nancy A. and Robert E. Meader  
 Gerlinda S. Melchiori Ph.D.  
 Ingrid Merikoski  
 Bernice and Herman Merte  
 George R. and Brigitte Merz  
 Henry D. Messer - Carl A. House  
 Ms Heidi Meyer  
 Shirley and Bill Meyers  
 Mr. and Mrs. Eugene Miller  
 Sonya R. Miller  
 Edward and Barbara Mills  
 Thomas Mobley  
 William G. and  
 Edith O. Moller, Jr.  
 Jane and Kenneth Moriarty  
 Thomas and Hedi Mulford  
 Gerry and Joanne Navarre  
 Frederick C. Neidhardt and  
 Germaine Chipault  
 Alexander Nelson  
 James G. Nelson and  
 Katherine M. Johnson  
 Laura Nitzberg and  
 Thomas Carl  
 Arthur and Lynn Nusbaum  
 Dr. Nicole Obregon  
 Robert and Elizabeth Oneal  
 Constance and David Osler  
 Marysia Ostafin and  
 George Smillie  
 Drs. Sujit and Uma Pandit  
 William and Hedda Panzer  
 Nancy K. Paul  
 Wade and Carol Peacock  
 Zoe and Joe Pearson  
 Karen Tyler Perry  
 C. Anthony and  
 Marie B. Phillips

Mr. and  
 Mrs. Frederick R. Pickard  
 Wayne Pickvet and  
 Bruce Barrett  
 Frank and Sharon Pignaneli  
 Wayne and Suellen Pinch  
 Richard and Meryl Place  
 Donald and Evonne Plantinga  
 Bill and Diana Pratt  
 Jerry and Lorna Prescott  
 Larry and Ann Preuss  
 J. Thomas and Kathleen Pustell  
 Leland and  
 Elizabeth Quackenbush  
 Patricia Randle and James Eng  
 Jim and Ieva Rasmussen  
 Anthony L. Reffells and  
 Elaine A. Bennett  
 Jack and Margaret Ricketts  
 Constance O. Rinehart  
 Kathleen Roelofs Roberts  
 Mr. and Mrs. Stephen J. Rogers  
 Robert and Joan Rosenblum  
 Mr. Haskell Rothstein  
 Doug and Sharon Rothwell  
 Sally Rutzky  
 Arnold Sameroff and  
 Susan McDonough  
 Ina and Terry Sandalow  
 Miriam Sandweiss  
 John and Reda Santinga  
 Michael and Kimm Sarosi  
 Gary and Arlene Saxonhouse  
 Albert J. and Jane L. Sayed  
 Frank J. Schauerte  
 Richard Black and  
 Christine Schesky-Black  
 David and Marcia Schmidt  
 Jean Scholl  
 David E. and  
 Monica N. Schteingart  
 Mrs. Harriet Selin  
 Judith and Ivan Sherrick  
 George and Gladys Shirley  
 Jean and Thomas Shope  
 John and Arlene Shy  
 Carl Simon and Bobbi Low  
 Robert and Elaine Sims  
 Tim and Marie Slottow  
 Carl and Jari Smith  
 Mrs. Robert W. Smith  
 Yoram and Eliana Sorokin  
 Tom Sparks  
 Larry and Doris Sperling  
 Jeffrey D. Spindler  
 Burnette Staebler  
 Gary and Diane Stahle  
 Frank D. Stella  
 Rick and Lia Stevens  
 Stephen and Gayle Stewart  
 Ellen M. Strand and  
 Dennis C. Regan  
 Donald and Barbara Sugerma  
 Richard and Diane Sullivan  
 Brian and Lee Talbot  
 Margaret Talburtt and  
 James Peggs  
 Eva and Sam Taylor

Stephan Taylor and  
 Elizabeth Stumbo  
 James L. and Ann S. Telfer  
 Paul and Jane Thielking  
 Edwin J. Thomas  
 Bette M. Thompson  
 Dr. and Mrs. Robert F. Todd  
 Patricia and Terril Tompkins  
 Dr. and Mrs. Merlin C. Townley  
 Jim Toy  
 Bill and Jewell Tustian  
 Tanja and Rob Van der Voo  
 Lourdes Velez, MD  
 Wendy L. Wahl and  
 William R. Lee  
 Charles R. and  
 Barbara H. Wallgren  
 Robert D. and Liina M. Wallin  
 Deborah Webster and  
 George Miller  
 Lawrence A. Weis  
 Susan and Peter Westerman  
 Iris and Fred Whitehouse  
 Leslie Clare Whitfield  
 Professor Steven Whiting  
 Reverend Francis E. Williams  
 Christine and Park Willis  
 Thomas and Iva Wilson  
 Lois Wilson-Crabtree  
 Beverly and Hadley Wine  
 Beth and I. W. Winsten  
 Charles Witke and Aileen Gatten  
 Charlotte A. Wolfe  
 Al and Alma Wool  
 Don and Charlotte Wyche  
 MaryGrace and Tom York  
 Ann and Ralph Youngren  
 Mrs. Alejandra Zapata  
 Gail and David Zuk

## ADVOCATES

\$100-\$249

Tim and Leah Adams  
 Dr. Dorit Adler  
 Ronald Albucher and Kevin Pfau  
 Phyllis Allen  
 Richard and Betty Allen  
 Barbara and Dean Alseth  
 Forrest Alter  
 Richard Amdur  
 Dr. and  
 Mrs. Charles T. Anderson  
 Joseph and Annette Anderson  
 Mr. and Mrs. David Andrew  
 Jill B. and  
 Thomas J. Archambeau M.D.  
 Bert and Pat Armstrong  
 Thomas and Mary Armstrong  
 Gaard and Ellen Arneson  
 Jack and Jill Arnold  
 Dr. and Mrs. Allan Ash  
 James and Doris August  
 John and Rosemary Austgen  
 Erik and Linda Lee Austin  
 Ronald and Anna Marie Austin

## Advocates, continued

- Shirley and Donald Axon  
Virginia and Jerald Bachman  
Mr. Robert M. Bachtel  
Mark Baerwolf  
Prof. and Mrs. J. Albert Bailey  
Joe and Helen Logelin  
Helena and Richard Balon  
Maria Kardas Barna  
Laurie and Jeff Barnett  
Robert and Carolyn Bartle  
Leslie and Anita Bassett  
Judith Batay-Csorba  
Francis J. Bateman  
Dorothy W. Bauer  
Charles Baxter  
Deborah Bayer and Jon Tyman  
Kenneth C. Beachler  
James and Margaret Bean  
Frank and Gail Beaver  
James M. Beck and  
Robert J. McGranaghan  
Robert Beckley and  
Judy Dinesen  
Nancy Bender  
Walter and Antje Benenson  
Mr. and Mrs. Ib Bentzen-Bilkvist  
Dr. Rosemary R. Berardi  
Helen V. Berg  
Harvey Berman and  
Rochelle Kovacs Berman  
Kent Berridge  
Gene and Kay Berrodin  
Mark Bertz  
Ralph and Mary Beuhler  
Christopher Bigge  
Eric and Doris Billes  
Jack Billie and Sheryl Hirsch  
Sara Billmann and Jeffrey Kuras  
William and Ilene Birge  
Elizabeth S. Bishop  
Leslie and Roger Black  
Martin and Mary Black  
Mary Steffek Blaske and  
Thomas Blaske  
Mark and Lisa Bomia  
Seth Bonder  
Harold W. and  
Rebecca S. Bonnell  
Lynda Ayn Boone  
Morris and Reva Bornstein  
Jeanne and David Bostian  
Jim Botsford and Janice  
Stevens Botsford  
Bob and Jan Bower  
William R. Brashear  
Mr. and Mrs. Gerald Bright  
Paul A. Bringer  
Olin and Aleeta Browder  
Linda Brown and Joel Goldberg  
Edward and Jeanette Browning  
Molly and John Brueger  
John and Nancy Buck  
Elizabeth Buckner and  
Patrick Herbert  
Marilyn Burhop  
Barbara H. Busch  
Joanne Cage  
Brian and Margaret Callahan  
Louis and Janet Callaway
- Barb and Skip Campbell  
Susan Y. Cares  
Evan and Marla Carew  
James and Jennifer Carpenter  
Dennis B. and  
Margaret W. Carroll  
John and Patricia Carver  
Margaret and William Caveney  
K. M. Chan  
Samuel and Roberta Chappell  
Felix and Ann Chow  
Catherine Christen  
Edward and Rebecca Chudacoff  
Sallie R. Churchill  
Nancy Gilley  
Donald and Astrid Cleveland  
Mr. Fred W. Cohrs  
Willis Colburn and Denise Park  
Michael and Marion T. Collier  
Ed and Cathy Colone  
Wayne and Melinda Colquitt  
M. C. Conroy  
Jeff Cooper and Peggy Daub  
Brian T. and Lynne P. Coughlin  
Marjorie A. Cramer  
Richard and Penelope Crawford  
Mary C. Crichton  
Mr. and Mrs. James I. Crump  
Peggy Cudkowicz  
Townley and Joann Culbertson  
John and  
Carolyn Rundell Culotta  
Marcio Da Fonseca  
Mr. and Mrs. John R. Dale  
Marylee Dalton  
Timothy and  
Robin Damschroder  
Mr. and Mrs. Norman Dancy  
Stephen Darwall and  
Rosemarie Hester  
DarLinda and Robert Dascola  
Ruth E. Datz  
Sally and Jack Dauer  
Mr. and  
Mrs. Arthur W. Davidge  
Mark and Jane Davis  
State Rep. and  
Mrs. Gene De Rossett  
Dr. and Mrs. Raymond F. Decker  
Joe and Nan Decker  
Peter and Deborah Deem  
Rossana and George DeGroot  
George and Margaret DeMuth  
Pamela DeTullio and Stephen  
Wiseman  
Don and Pam Devine  
Martha and Ron DiCecco  
Andrzej and Cynthia Dlugosz  
Ruth J. Doane  
Mrs. Ruth P. Dorr-Maffett  
Bill and Mary Doty  
Victor and Elizabeth Douvan  
Roland and Diane Drayson  
Mary P. Dubois  
Ronald and Patricia Due  
Connie R. Dunlap  
Richard F. Dunn  
Jean and Russell Dunnaback  
Anthony and Sarah Earley
- Richard and Myrna Edgar  
Morgan H. and Sara O. Edwards  
Vernon J. and Johanna Ehlers  
Karen Eisenbrey  
Chris and Betty Elkins  
Lawrence Ellenbogen  
Anthony and Paula Elliott  
Julie and Charles Ellis  
H. Michael and Judith L. Endres  
Joan and Emil Engel  
Karen Epstein and  
Dr. Alfred Franzblau  
Steve and Pamela Ernst  
Dorothy and Donald Eschman  
Mr. and Mrs. Robert B. Fair, Jr.  
Garry and Barbara Faja  
Inka and David Felbeck  
David and Karen Feldman  
Phil and Phyllis Fellin  
Larry and Andra Ferguson  
Dennis and Claire Fernly  
Carol Fierke  
Lydia H. Fischer  
Dr. and Mrs. Richard L. Fisher  
Beth and Joe Fitzsimmons  
George and Kathryn Foltz  
Susan Goldsmith and  
Spencer Ford  
Burke and Carol Fossee  
Scott Fountain  
William and Beatrice Fox  
Dan and Jill Francis  
Hyman H. Frank  
Lora Frankel  
Lucia and Doug Freeth  
Richard and Joann Freethy  
Sophia L. French  
Joanna and Richard Friedman  
Marilyn L. Friedman and  
Seymour Koenigsberg  
Susan Froelich and  
Richard Ingram  
Gail Fromes  
Jerry Frost  
Ms. Carolyn Frost  
Joseph E. Fugere and  
Marianne C. Mussett  
Frances and Robert Gamble  
Karen Gardstrom  
Joann Gargaro  
R. Dennis and Janet M. Garmer  
Jack J. and Helen Garris  
C. Louise Garrison  
Janet and Charles Garvin  
Tom Gasloli  
Wood and Rosemary Geist  
Michael and  
Ina Hanel-Gerdenich  
W. Scott Gerstenberger and  
Elizabeth A. Sweet  
Leo and Renate Gerulaitis  
Allan F. Gibbard  
Paul and Suzanne Gikas  
Zita and Wayne Gillis  
Joyce and Fred Ginsberg  
Mr. and Mrs. Robert Gold  
Ed and Mona Goldman  
Mrs. Eszter Gombosi  
Mitchell and Barbara Goodkin
- Selma and Albert Gorlin  
William and Jean Gosling  
Kristin A. Goss  
Michael L. Gowing  
Steve and Carol Grafton  
Christopher and Elaine Graham  
Helen M. Graves  
Isaac and Pamela Green  
Deborah S. Greer  
Linda Gregerson and  
Steven Mullaney  
G. Robinson and Ann Gregory  
Linda and Roger Grekin  
Lauretta and Jim Gribble  
Rita and Bob Grierson  
William L. and  
Martha B. Grimes  
Laurie Gross  
Robin and Stephen Gruber  
Arthur W. Gulick, M.D.  
Lorraine Gutierrez and  
Robert Peyser  
Caroline and Roger Hackett  
Barbara H. Hammitt  
Dora E. Hampel  
Don and Jan Hand  
Grace H. Hanninen  
Rachel Brett Harley  
Stephen G. and  
Mary Anna Harper  
Ed Sarath and Joan Harris  
Laurelynn D. and  
George Harris  
Susan R. Harris  
Julie Hartman  
Anne M. Heacock  
Henry and Mary S. Healey  
James and Esther Heitler  
William C. Helfer  
Sivana Heller  
Karl Henkel and Phyllis Mann  
Al and Jolene Hermalin  
Jeanne Hernandez  
Ken and Carrie Herr  
Roger and Dawn Hertz  
Ronald D. and Barbara J. Hertz  
Roger F. Hewitt  
John and Martha Hicks  
Herb and Dee Hildebrandt  
Peter G. Hinman and  
Elizabeth A. Young  
James and Ann Marie Hitchcock  
Frances C. Hoffman  
Carol and Dieter Hohnke  
Gad Holland  
Kenneth and Joyce Holmes  
Mrs. Howard Holmes  
Dave and Susan Horvath  
Paul A. Hossler  
Dr. Nancy Houk  
James and Wendy Fisher House  
Jeffrey and Allison Housner  
Gordon Housworth  
Kenneth and Carol Hovey  
Mrs. V. C. Hubbs  
Jude and Ray Huetteman  
Harry and Ruth Huff  
JoAnne W. Hulce  
Virginia E. Hunt

- Edward C. Ingraham  
Perry Irish  
Sid and Harriet Israel  
Judith G. Jackson  
Prof. and Mrs. John H. Jackson  
David Jahn  
Elizabeth Jahn  
Joachim and Christra Janecke  
Nick Janosi  
Dean and Leslie Jarrett  
Marilyn G. Jeffs  
Frances and Jerome Jelinek  
Keith D. and Kathryn H. Jensen  
Margaret Jensen  
Christopher P. and Sharon Johnson  
Mark and Linda Johnson  
Constance L. Jones  
Paul R. and Meredith Jones  
Mary Kalmes and Larry Friedman  
Allyn and Sherri Kantor  
Paul Kantor and Virginia Weckstrom Kantor  
Mr. and Mrs. Irving Kao  
Mr. and Mrs. Wilfred Kaplan  
Carol and H. Peter Kappus  
Alex and Phyllis Kato  
Allan S. Kaufman, M.D.  
Dennis and Linda Kayes  
Brian Kelley  
Richard Kennedy  
Linda D. and Thomas E. Kenney  
George L. Kenyon and Lucy A. Waskell  
David J. and JoAnn Z. Keosaian  
Nancy Keppelman and Michael Smerza  
John Kiely  
Paul and Leah Kileny  
Jeanne Kin  
Howard King and Elizabeth Sayre-King  
Jean and Arnold Kluge  
Dr. and Mrs. William L. Knapp  
Rosalie and Ron Koenig  
Michael J. Kondziolka  
Charles and Linda Koopmann  
Alan and Sandra Kortesoja  
Dr. and Mrs. Richard Krachenberg  
Jean and Dick Kraft  
Barbara and Ronald Kramer  
Doris and Don Kraushaar  
Edward and Lois Kraynak  
William G. Kring  
Alan and Jean Krisch  
Mr. and Mrs. John Lahiff  
Tim and Kathy Laing  
Mr. and Mrs. Seymour Lampert  
Henry and Alice Landau  
David and Darlene Landsittel  
Carl F. and Ann L. LaRue  
Fred and Ethel Lee  
Diane Lehman and Jeffrey Lehman  
Jeffrey Lehman  
Ann M. Leidy  
Richard and Barbara Leite
- Derick and Diane Lenters  
Richard LeSueur  
David E. Levine  
Harry and Melissa LeVine  
George and Linda Levy  
David Lewis  
Norman and Mira Lewis  
Ralph and Gloria Lewis  
Robert and Julie Lewis  
Tom and Judy Lewis  
Arthur and Karen Lindenberg  
Mark Lindley and Sandy Talbott  
Michael and Debra Lisull  
Margaret K. Liu and Diarmaid M. O'Foighil  
Dr. and Mrs. F. A. Locke  
Dr. Lennart H. Lofstrom  
Julie M. Loftin  
Jane Lombard  
David Lootens  
Florence Lopatin  
Armando Lopez Rosas  
Barbara R. and Michael Lott  
Lynn Luckenbach  
Marjory S. Luther  
Elizabeth L. Lutton  
William T. Lyons  
Walter Allen Maddox  
Pia Maly Sundgren  
Pearl Manning  
Sheldon and Geraldine Markel  
Erica and Harry Marsden  
Irwin and Fran Martin  
H.L. Mason  
Wendy Massard  
Debra Mattison  
Janet Max  
Glenn D. Maxwell  
Carole Mayer  
Olivia Maynard and Olof Karlstrom  
LaRuth C. McAfee  
Patrick McConnell  
Neil and Suzanne McGinn  
Bob and Doris Melling  
Allen and Marilyn Menlo  
Lori and Jim Mercier  
Arthur and Elizabeth Messiter  
Helen Metzner  
Don and Lee Meyer  
Suzanne M. Meyer  
Leo and Sally Miedler  
William and Joan Mikkelsen  
Carmen and Jack Miller  
Gerald A. and Carol Ann Miller  
Bob and Carol Milstein  
James and Kathleen Mitchiner  
Elaine Mogerman  
Olga Ann Moir  
Mary Jane Molesky  
Mr. Eriwan R. Morales and Dr. Seigo Nakao  
Jean Marie Moran and Stefan V. Chmielewski  
Arnold and Gail Morawa  
Robert and Sophie Mordis  
Dr. and Mrs. George W. Morley  
A. A. Moroun
- John and Michelle Morris  
Rick Motschall  
James and Sally Mueller  
Bernhard and Donna Muller  
Marc and Katie Mulligan  
Gavin Eadie and Barbara Murphy  
Lora G. Myers  
Arthur and Dorothy Nesse  
Shirley Neuman  
Sharon and Chuck Newman  
William and Ellen Newsom  
Mr. and Mrs. James K. Newton  
John and Ann Nicklas  
Mrs. Marvin Niehuss  
Richard and Susan Nisbett  
Christer and Outi Nordman  
Richard and Caroline Norman  
Jolanta and Andrzej Nowak  
Patricia O'Connor  
Nels R. and Mary H. Olson  
Paul L. and Shirley M. Olson  
Kathleen I. Operhall  
Fred Ormand and Julia Broxholm  
David Orr and Gwynne Jennings  
Dr. Jon Oscherwitz  
Mr. and Mrs. James R. Packard  
Daniel and Laura Palomaki  
Anthea Papista  
Donna D. Park  
Bill and Katie Parker  
Donna Parmelee and William Nolting  
Sarah Parsons  
Robert and Arlene Paup  
Drs. R. Paul Drake and Joyce E. Penner  
William and Susan Penner  
Steven and Janet Pepe  
Mr. Bradford Perkins  
Susan A. Perry  
Jeff Jawowiaz and Ann Marie Petach  
Douglas Phelps and Gwendolyn Jessie-Phelps  
Nancy S. Pickus  
Robert and Mary Ann Pierce  
William and Betty Pierce  
Dr. and Mrs. James Pikulski  
Robert and Mary Pratt  
Tony and Dawn Proccasini  
Lisa M. Profera  
Ernst Pulgram  
Jonathan Putnam  
Dr. G. Robina Quale-Leach  
Mr. and Mrs. Mitchell Radcliff  
Dr. and Mrs. Robert Rapp  
Maxwell and Marjorie Reade  
Richard and Patricia Redman  
Michael J. Redmond  
Russ and Nancy Reed  
Dr. and Mrs. James W. Reese  
Mr. and Mrs. Stanislav Rehak  
Mr. and Mrs. Bernard E. Reisman  
J. and S. Remen  
Anne and Fred Remley  
Duane and Katie Renken
- Alice Rhodes  
Lou and Sheila Rice  
Walton and Sandra Rice  
James and Helen Richards  
Carol P. Richardson  
Betty Richard  
Lita Ristine  
Janet K. Robinson, Ph.D.  
Jim and Kathleen Robinson  
Rosemary Rochford  
Jonathan and Anala Rodgers  
Mary Ann and Willard Rodgers  
Michael J. and Yelena M. Romm  
Edith and Raymond Rose  
Elizabeth A. Rose  
Stephen Rosenblum and Rosalyn Sarver  
Richard Z. and Edie W. Rosenfeld  
Charles W. Ross  
Lisa Rozek  
Glady's Rudolph  
Dr. Glenn R. Ruyhley  
Mitchell and Carole Rycus  
Joan Sachs  
Brian Salesin  
Stephanie Savarino  
Sarah Savarino  
Jeri Sawall  
Drs. Edward and Virginia Jaynes  
Helga and Jochen Schacht  
Mary A. Schieve  
Courtland and Inga Schmidt  
Elizabeth L. Schmitt  
Susan G. Schooner  
Dietrich and Mary Schulze  
Shirley Schumacher  
Peter and Kathleen Scullen  
Richard A. Seid  
Frank and Carol Seidl  
Suzanne Selig  
Janet Sell  
Louis and Sherry Senunas  
Richard H. Shackson  
Terry Shade  
Matthew Shapiro and Susan Garetz  
David and Elvera Shappirio  
Larry Shear and George Killoran  
Ingrid and Cliff Sheldon  
Bright Sheng  
Lorraine M. Sheppard  
Patrick and Carol Sherry  
Mary Alice Shulman  
Jan Onder  
Douglas and Barbara Siders  
Dr. Bruce M. Siegan  
Eldy and Enrique Signori  
Susan Silagi  
Morrine Silverman  
Costella Simmons-Winbush  
Mildred Simon  
Michael and Maria Simonte  
Alice A. Simsar  
Alan and Eleanor Singer  
Scott and Joan Singer  
Donald and Susan Sinta

## Advocates, continued

- Bernard J. Sivak and  
Loretta Polish  
Beverly N. Slater  
David E. Smith  
Don and Dorothy Smith  
Dr. and Mrs. Michael W. Smith  
Haldon and Tina Smith  
Mr. Webster Smith  
Paul and Julia Smith  
Susan E. Smith  
Hugh and Anne Solomon  
James A. Somers  
Dr. Sheldon and  
Sydelle Sonkin  
Errol and Pat Soskolne  
Becki Spangler and  
Peyton Bland  
Peter Spurling and  
John Gutoskey  
Elizabeth Spencer and  
Arthur Schwartz  
Steve and Cynny Spencer  
Jim Spevak  
Judy and Paul Spradlin  
Charles E. Sproger  
Constance D. Stankrauff  
Stephen S. Stanton  
Stephanie and Chad Stasik  
Mr. and  
Mrs. William C. Stebbins  
Virginia and Eric Stein  
William and Georgine Steude  
Jim and Gayle Stevens  
Sue A. Stickel  
John and Beryl Stimson  
James L. Stoddard  
Mr. and  
Mrs. James Bower Stokoe  
Bob and Shelly Stoler  
Benjamin and Mona Stolz  
Eric and Ines Storhok  
Mary Stubbins  
Thomas Stulberg  
Roger Stutesman  
Nancy Bielby Sudia  
Mike and Donna Swank  
Thomas and Anne Swantek  
Richard and June Swartz  
Michael W. Taft and  
Catherine N. Herrington  
Jim and Sally Tamm  
Larry and Roberta Tankanow  
Gerald and Susan Tarpley  
Michael and Ellen Taylor  
Robert Teicher and  
Sharon Gambin  
James B. Terrill  
Denise Thal and David Scobey  
Carol and Jim Thiry  
Catherine Thoburn  
Norman and Elaine Thorpe  
Michael Thouless and Yi-Li Wu  
Anna Thuren  
Peggy Tieman  
Bruce Tobis and Alice Hamele  
Ronald and Jacqueline Tonks  
John and Geraldine Topliss  
Sarah Trinkaus  
Kenneth and Sandra Trosien
- Roger and Barbara Trunsky  
Jeff and Lisa Tulin-Silver  
Michael Udow  
Mr. Thomas W. Ufer  
Alvan and Katharine Uhle  
Paul and Fredda Unangst  
Bernice G. and  
Michael L. Updike  
Madeleine Vallier  
Carl and Sue Van Appledorn  
Rebecca Van Dyke  
Bram and Lia van Leer  
Fred and Carole van Reesema  
Virginia Vass  
Sy and Florence Veniar  
Katherine Verderly  
Ryan and Ann Verhey-Henke  
Marie Vogt  
Harue and Tsuguyasu Wada  
Virginia Wait  
David C. and  
Elizabeth A. Walker  
Jo Ann Ward  
Drs. Philip and Maria Warren  
Lorraine Nadelman and  
Sidney Warschausky  
Arthur and Renata Wasserman  
Leo Wasserman  
Mr. and Mrs. Warren Watkins  
Carol Weber  
Joan D. Weber  
Richard and Madelon Weber  
Carolyn J. Weigle  
Donna G. Weisman  
John, Carol and Ian Welsch  
John and Joanne Werner  
Michael and Edwenna Werner  
Helen Michael West  
Paul E. Duffy and  
Marilyn L. Wheaton  
Mary Ann Whipple  
Gilbert and Ruth Whitaker  
James B. and Mary F. White  
Thomas F. Wieder  
William and Cristina Wilcox  
Sara S. Williams  
Shelly F. Williams  
Anne Marie and Robert Willis  
Donna Winkelman and  
Tom Easthope  
Sarajane and Jan Winkelman  
Mark and Kathryn Winterhalter  
Ira and Amanda Wollner  
Richard E. and Muriel Wong  
J. D. and Joyce Woods  
Ronald and Wendy Woods  
Stan and Pris Woollams  
Israel and Fay Woronoff  
Alfred and Corinne Wu  
Robert and Betty Wurtz  
Fran and Ben Wylie  
John and Mary Jean Yablonky  
Richard Yarmain  
James and Gladys Young  
Mayer and Joan Zald  
Sarah Zearfoss and  
Stephen Hiyama  
Susan Zerweck  
Erik and Lineke Zuiderweg

## CORPORATE FUND

\$100,000 and above

Ford Motor Company Fund  
Forest Health Services  
Corporation  
University of Michigan  
Pfizer Global Research and  
Development: Ann Arbor  
Laboratories

\$20,000-\$49,999

Borders Group, Inc.  
DaimlerChrysler  
Corporation Fund  
Office of the Senior Vice  
Provost for Academic Affairs  
TIAA-CREF

\$10,000-\$19,999

Bank of Ann Arbor  
Bank One  
Brauer Investments  
CFI Group  
DTE Energy Foundation  
KeyBank  
McDonald Investments  
McKinley Associates  
Sesi Lincoln Mercury Volvo  
Mazda  
Thomas B. McMullen Company

\$5,000-\$9,999

Ann Arbor Automotive  
Butzel Long Attorneys  
Comerica Incorporated  
Consumers Energy  
Dennis Dahlmann Inc.  
Edward Surovell Realtors  
Elastizell Corporation of  
America  
Learning Express-Michigan  
MASCO Charitable Trust  
Miller, Canfield, Paddock and  
Stone, P.L.C.  
National City Bank  
Pepper Hamilton LLP

\$1,000-\$4,999

Alf Studios  
Blue Nile  
Café Marie  
Chase Manhattan  
Comcast  
Holcim (US) Inc.  
Joseph Curtin Studios  
Lewis Jewelers  
ProQuest Company  
Republic Bank  
TCF Bank  
Texaco

\$100-\$999

Ayse's Courtyard Café  
Ann Arbor Builders  
Ann Arbor Commerce Bank  
Bed & Breakfast on Campus  
BKR Dupuis & Ryden, P.C.  
Burns Park Consulting  
Cemex Inc.  
Clark Professional Pharmacy  
Coffee Express  
Dr. Diane Marie Agresta  
Edward Brothers, Inc.  
Fleishman Hillard Inc.  
Galamp Corporation  
Garris, Garris, Garris & Garris,  
P.C.  
Guardian Industries  
Malloy Lithographing  
Michigan Critical Care  
Consultants  
Quinn Evans/Architects  
Rosebud Solutions  
Seaway Financial  
Agency/Wayne Milewski  
Selo/Shevel Gallery  
Swedish Women's Educational  
Association  
Swing City Dance Studio  
Thalner Electronic  
Laboratories Inc.

FOUNDATION AND  
GOVERNMENT  
SUPPORT

UMS gratefully acknowledges  
the support of the following  
foundations and government  
agencies:

\$100,000 and above

Doris Duke Charitable  
Foundation/JazzNet  
The Ford Foundation  
Michigan Council for Arts and  
Cultural Affairs  
The Power Foundation  
Wallace-Reader's Digest Funds

\$50,000-\$99,999

Community Foundation for  
Southeastern Michigan

\$10,000-\$49,999

Association of Performing Arts  
Presenters Arts Partners  
Program  
National Endowment for  
the Arts  
New England Foundation for the  
Arts National Dance Project



## \$1,000-\$9,999

Arts Midwest  
 Gelman Educational  
 Foundation  
 Heartland Arts Fund  
 Mid-America Arts Alliance  
 The Lebensfeld Foundation  
 Montague Foundation  
 THE MOSAIC FOUNDATION  
 (of R. and P. Heydon)  
 Sarns Ann Arbor Fund  
 Vibrant of Ann Arbor

## \$100-\$999

Erb Foundation

## TRIBUTE GIFTS

*Contributions have been received in honor and/or memory of the following individuals:*

Alice B. Crawford  
 Alice Kelsey Dunn  
 Michael Gowing  
 Dr. William Haeck  
 Carolyn Honston  
 Harold Jacobson  
 Joel Kahn  
 Elizabeth E. Kennedy  
 William McAdoo  
 Frederick N. McOmber  
 Robert Meredith  
 Gwen and Emerson Powrie  
 Professor Robert Putnam  
 Ruth Putnam  
 Steffi Reiss  
 Margaret Rothstein  
 Eric H. Rothstein  
 Ned Shure  
 Dora Maria Sonderhoff  
 Wolfgang F. Stolper  
 Diana Stone Peters  
 Isaac Thomas  
 Francis V. Viola III  
 Horace Warren  
 Carl H. Wilmot  
 Peter Holderness Woods  
 Elizabeth Yhouse

## BURTON TOWER SOCIETY

*The Burton Tower Society recognizes and honors those very special friends who have included UMS in their estate plans. UMS is grateful for this important support, which will continue the great traditions of artistic excellence, educational opportunities and community partnerships in future years.*

Anonymous  
 Carol and Herb Amster  
 Dr. and Mrs. David G. Anderson  
 Mr. Neil P. Anderson  
 Catherine S. Arcure  
 Mr. Hilbert Beyer  
 Elizabeth Bishop  
 Mr. and Mrs. Pal E. Borondy  
 Barbara Everitt Bryant  
 Pat and George Chatas  
 Mr. and Mrs. John Alden Clark  
 Douglas D. Cray  
 H. Michael and Judith L. Endres  
 Beverley and Gerson Geltner  
 John and Martha Hicks  
 Mr. and Mrs. Richard Ives  
 Marilyn Jeffs  
 Thomas C. and Constance M. Kinnear  
 Charlotte McGeoch  
 Michael G. McGuire  
 Dr. Eva Mueller  
 Len and Nancy Niehoff  
 Dr. and Mrs. Frederick C. O'Dell  
 Mr. and Mrs. Dennis Powers  
 Mr. and Mrs. Michael Radock  
 Mr. and Mrs. Jack W. Ricketts  
 Mr. and Mrs. Willard L. Rodgers  
 Prudence and Amnon Rosenthal  
 Irma J. Skelnar  
 Herbert Sloan  
 Art and Elizabeth Solomon  
 Roy and JoAn Wetzel  
 Mr. and Mrs. Ronald G. Zollars

## ENDOWED FUNDS

*The future success of the University Musical Society is secured in part by income from UMS's endowment. UMS extends its deepest appreciation to the many donors who have established and/or contributed to the following funds.*

H. Gardner Ackley  
 Endowment Fund  
 Amster Designated Fund  
 Catherine S. Arcure  
 Endowment Fund  
 Choral Union Fund  
 Hal and Ann Davis  
 Endowment Fund  
 Ottmar Eberbach Funds  
 Epstein Endowment Fund  
 JazzNet Endowment Fund  
 William R. Kinney Endowment  
 Fund  
 NEA Matching Fund  
 Palmer Endowment Fund  
 Mary R. Romig-deYoung  
 Music Appreciation Fund  
 Charles A. Sink Memorial  
 Fund  
 Catherine S. Arcure/Herbert E.  
 Sloan Endowment Fund  
 University Musical Society  
 Endowment Fund

## IN-KIND GIFTS

A-1 Rentals, Inc.  
 Raquel and Bernard Agranoff  
 Amadeus Café  
 Ann Arbor Automotive  
 Ann Arbor Art Center  
 Ann Arbor Women's City Club  
 Arbor Brewing Co.  
 Ashley Mews  
 The Back Alley Gourmet  
 Bella Ciao Trattoria  
 Kathy Benton and  
 Robert Brown  
 Bivouac  
 The Blue Nile Restaurant  
 Bodywise Therapeutic Massage  
 Borders Book and Music  
 Café Marie  
 Bill and Nan Conlin  
 Hugh and Elly Rose Cooper  
 Cousins Heritage Inn  
 Roderick and Mary Ann Daane  
 D'Amato's Italian Restaurant  
 Daniel's on Liberty  
 David Smith Photography  
 Peter and Norma Davis  
 Robert Derkacz  
 The Display Group

Dough Boys Bakery  
 The Earle  
 Katherine and Damian Farrell  
 Ken and Penny Fischer  
 Food Art  
 The Gandy Dancer  
 Beverley and Gerson Geltner  
 Great Harvest Bread Company  
 Linda and Richard Greene  
 Nina Hauser  
 John's Pack & Ship  
 Steve and Mercy Kasle  
 Kerrytown Bistro  
 King's Keyboard House  
 Ray Lance  
 George and Beth Lavoie  
 Le Dog  
 Leopold Bros. of Ann Arbor  
 Richard LeSueur  
 Mainstreet Ventures  
 Ernest and Jeanne Merlanti  
 John Metzger  
 Michigan Car Services, Inc.  
 and Airport Sedan, LTD  
 Robert and Melinda Morris  
 Nicola's Books, Little Professor  
 Book Co.  
 Paesano's Restaurant  
 Pfizer Global Research and  
 Development: Ann Arbor  
 Laboratories  
 Randy Parrish Fine Framing  
 Red Hawk Bar & Grill  
 Regrets Only  
 Rightside Cellar  
 Ritz Camera One Hour Photo  
 Don and Judy Dow Rumelhart  
 Maya Savarino  
 Penny and Paul Schreiber  
 Seva  
 Shaman Drum Bookshop  
 Dr. Elaine R. Soller  
 Washington Street Gallery  
 Weber's Restaurant  
 Zanzibar

*We salute  
the University  
Musical Society  
for bringing our community  
excellence and diversity in  
highly artistic programming.*

**BRAVO!**



**Personal & Commercial Insurance**

305 East Eisenhower, Suite 100  
Ann Arbor, Michigan 48104 • 995-4444  
www.mundusinsurance.com

**ZANZIBAR**  
*contemporary american dining  
w/ mediterranean & tropical influences*



**lunch • dinner • sunday brunch  
private rooms • reservations**

**216 south state street • 994-7777**



**RED HAWK  
BAR & GRILL**

**extensive, eclectic menu  
full bar • featured beers  
wines by the glass  
house-made desserts  
weekly specials • smoke-free**

**316 South State Street • 994-4004**

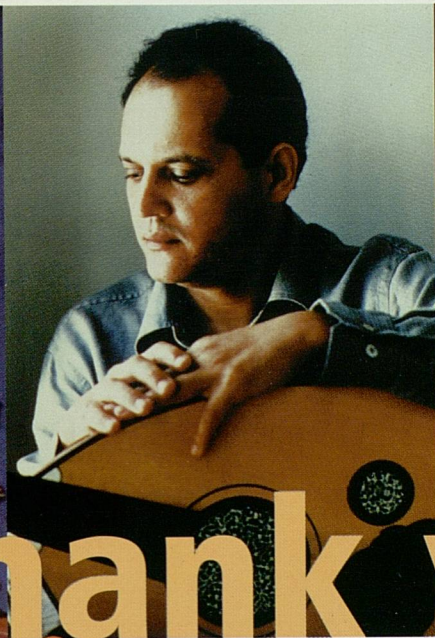
**UMS is PROUD to be  
a MEMBER of the  
FOLLOWING ORGANIZATIONS**



**Ann Arbor Area Convention & Visitors Bureau  
ArtServe Michigan  
Association of Performing Arts Presenters  
Chamber Music America  
International Society for the Performing Arts  
Michigan Association of Community Arts Agencies  
National Center for Nonprofit Boards  
State Street Association**

**UMS ADVERTISERS**

- |  |                                |   |   |
|--|--------------------------------|---|---|
| 20 Alden B. Dow Home & Studio          | 22 Comerica, Inc.              | 42 Land Architects                                | 24 Sweetwaters Café                         |
| 42 Ann Arbor Builders                  | 38 Dobson McOmber              | 13 Lewis Jewelers                                 | 42 Ufer & Co.                               |
| 44 Ann Arbor Symphony Orchestra        | 12 Edward Surovell Realtors    | 22 Littlefield & Sons Furniture Service           | 38 UM Museum of Art                         |
| 38 Automated Resource Management, Inc. | 20 Forest Health Services      | 40 Miller, Canfield, Paddock & Stone              | 16 UM School of Music                       |
| 12 Bank of Ann Arbor                   | 22 Fraleigh's Nursery          | 56 Mundus and Mundus                              | 32 University Commons/Blue Hill Development |
| 44 Bellanina Day Spa                   | 47 Glacier Hills               | 24 National City Bank—Private Investment Advisors | 34 WDET                                     |
| 42 Beresh Jewelers                     | 40 Howard Cooper Import Center | 20 Q Ltd.   | 32 WEMU                                     |
| 22 Bodman, Longley and Dahling, LLP    | 38 Huron Valley Tennis Club    | 56 Red Hawk Bar and Grill/Zanzibar                | 24 WGTE                                     |
| 18 Butzel Long                         | 38 IATSE Local 395             | 42 Rudolf Steiner School of Ann Arbor             | 10 WKAR                                     |
| 24 Chelsea Musical Celebrations        | 38 Journeys International      |   | C WUOM                                      |
|  | 44 Key Bank                    |   |   |
|  | 18 King's Keyboard             |   |   |



thank you  
for supporting UMS

UNIVERSITY  
**ums**  
MUSICAL SOCIETY

