

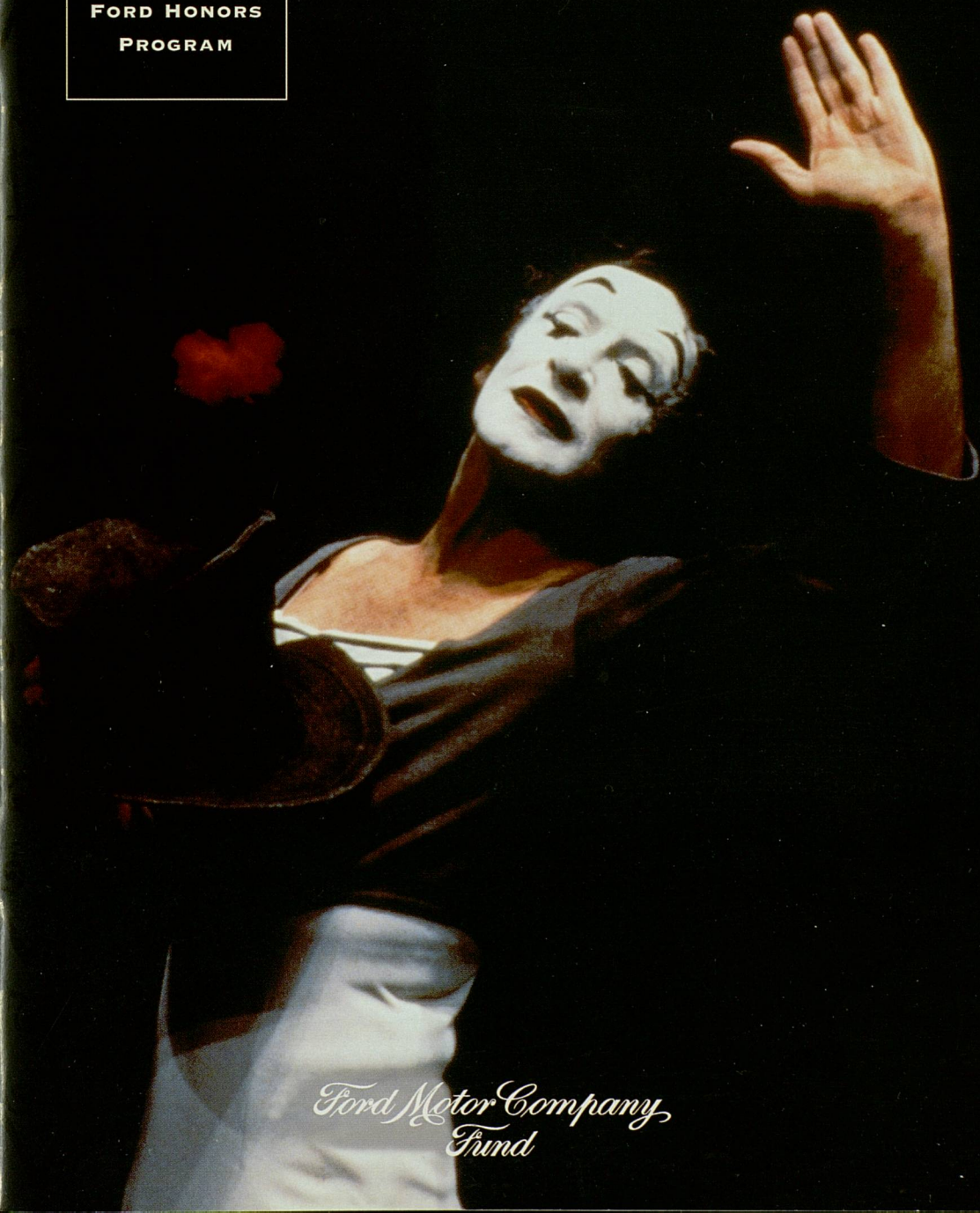
University Musical Society
and Ford Motor Company Fund present



THE 2001
FORD HONORS
PROGRAM

Marcel Marceau

University Musical Society Distinguished Artist Award



*Ford Motor Company
Fund*

We've always been interested in things
that move people.

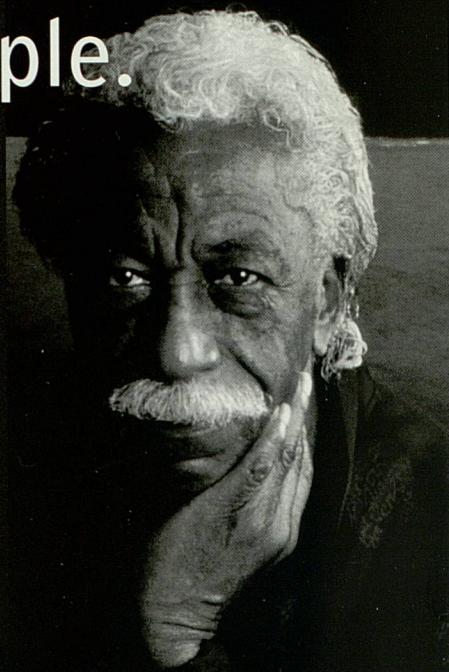
WWW.FORD.COM

CONTAINS:

BETTER IDEA #33

Arts

INTERNATIONAL



Dance, art, music and literature do so much to enhance and enrich our lives. Not only do they offer a valuable experience, but also, they increase the enjoyment of many. We feel our world is a much better place because of such endeavors. And we look forward to a future filled with the creativity and inspiration the arts provide to all of us.

Gordon Parks' multi-faceted career includes works as filmmaker, novelist, poet, composer, and what he is perhaps best known as, a photojournalist with Life magazine for over 20 years. His art is truly a treasure for all.

"Portrait of Gordon Parks," 1997 ©Johanna Fiore.
In the collection of the Corcoran Gallery of Art,
Washington, D.C. Gift of the artist.

Ford Motor Company
BETTER IDEAS.™

www.ford.com

A PERFORMANCE AND TRIBUTE TO



Marcel Marceau

CELEBRATING THE ART OF SILENCE

MARCEL MARCEAU

UMS Distinguished Artist Recipient

GYÖNGYI BIRO

Mime

KENNETH C. FISCHER

Host

Barbara Hinson

Sign Language Interpreter

**A BENEFIT FOR THE
UNIVERSITY MUSICAL SOCIETY EDUCATION PROGRAM**

Saturday Evening, May 12, 2001 at 6:00 pm

Hill Auditorium & Ingalls Mall

Ann Arbor, Michigan



A N N
A R B O R

Summer Festival

Marcel Marceau, featured on the 1984 Ann Arbor Summer Festival poster.

Performance and Tribute Program

INTRODUCTION

Kenneth C. Fischer,
President, University Musical Society



MARCEL MARCEAU: PERFORMANCE

Mr. Marceau will select his program from the following repertoire:

ACT I: Pantomimes of style

Walking	The Pickpocket's Nightmare	The Angel
Walking Against the Wind	The Amusement Park	Abel and Cain
The Staircase	Soliloquy of Three Lost Souls	The Dress
The Tight Rope Walker	The Maskmaker	The Tree
The Public Garden	The Seven Deadly Sins	The Pawnbroker
The Bill Poster	Youth, Maturity, Old Age and Death	The Tempest
The Kite	The Tango Dancer	The Mirror
The Sculptor	The Small Café	The Sword of the Samurai
The Painter	The Dice Players	The Birdkeeper
The Cage	The Four Seasons	Obsession
The Bureaucrats	The Dream	Pygmalion
The Hands	The Creation of the World	The Eater of Hearts
Remembrances	The Trial	The Tragedian on an Opening Night
The Side Show		

ACT II: Pantomimes of Bip

Bip in the Subway	Bip as a Lion Tamer
Bip Travels by Train	Bip, the Illusionist
Bip Travels by Sea	Bip looks for a Job
Bip as a Skater	Bip in the Modern and Future Life
Bip hunts Butterflies	Bip, King of Sports
Bip plays David and Goliath	Bip at the Athletic Club
Bip at a Ballroom	Bip pays tribute to the Silent Screen Actors
Bip commits Suicide	Bip as a Tailor in Love
Bip as a Soldier	Bip dreams he is Don Juan
Bip at a Society Party	Bip as a Matador
Bip as a Street Musician	Bip remembers
Bip as a China Salesman	Bip and the Matrimonial Agency
Bip as a Fireman	Bip in a Museum
Bip as a Great Artist	Bip plays the Tragedian's Beard on an Opening Night
Bip has a Date	
Bip as a Baby Sitter	
Bip as a Professor of Botany	
Bip and the Dynamite	
Bip as a Tragedian	

The University Musical Society

of
The University of Michigan

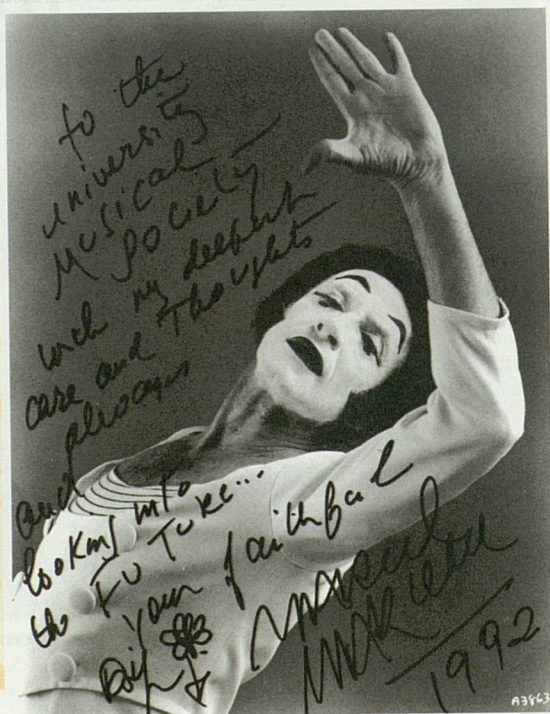


Presents



Marcel Marceau's UMS debut: October 16, 1971—original historic program with signed self-portrait of his alter-ego, Bip.

Personalized for UMS: "To the University Musical Society with my deepest care and thoughts always and looking into the future... Your faithful, Marcel Marceau." Dated 1992.



MARCEL MARCEAU AND UMS

A Video Montage

**PRESENTATION OF THE
UMS DISTINGUISHED ARTIST AWARD**

Gail W. Rector,
President Emeritus, University Musical Society

John M. Rintamaki,
Group Vice President and Chief of Staff, Ford Motor Company

Eighty-third
Performance
of the 122nd Season

The Ford Honors Program is made possible by Ford Motor Company Fund. Special thanks to Ford Motor Company Fund for its generous and continued support of the University Musical Society.

Additional thanks to UMS Advisory Committee Chairs Mary Pittman and Nita Cox, and to all members of the Committee, for their care, time, and planning in making this evening's gala celebration possible.

Marcel Marceau appears by arrangement with Micocci Productions, LLC.

Large print programs are available upon request.



Marcel Marceau, universally acclaimed as the world's greatest mime, was born in Strasbourg, France. Marceau's interest in the art of mime began in his childhood, when he was inspired by such silent screen artists as Charlie Chaplin, Buster Keaton, Harry Langdon, Harold Lloyd, and Laurel & Hardy.

In 1944 he enrolled in Charles Dullin's School of Dramatic Art in the Sarah Bernhardt Theatre in Paris, where he studied with his mime master Etienne Decroux, who also taught Jean-Louis Barrault. At the Liberation of Paris, he enlisted in the First French Army and participated in the German campaign, side by side with the American GIs. Demobilized in May 1946, he entered Barrault's Company, and was cast in the role of Arlequin in the

pantomime *Baptiste* which Barrault himself had interpreted in the world famous film *Les Enfants du Paradis*. He continued to work with Decroux until 1948.

In 1947, Marcel Marceau created his character "Bip," who has become his alter-ego, like Chaplin's "Little Tramp." Bip's adventures are likened to Don Quixote's struggles against the windmills of life.

Marceau's style exercises include such classic works as *The Cage*, *The Mask Maker*, *The Public Garden* and the famous *Youth, Maturity, Old Age and Death*, of which one critic said, "he

basis for over forty years and his extensive transcontinental tours have included South America, South and North Africa, Israel, Australia and New Zealand, Japan, India, China, South East Asia, Russia and all of Europe. For nearly forty of these years, Marceau's North American activity was undertaken in partnership with Mr. Ronald Wilford in a professional relationship regarded as one of the most successful and long-lasting in the entertainment world.

Mr. Marceau's art has become familiar to millions of Americans through his many television appearances. He received two Emmy

"TO COMMUNICATE THROUGH SILENCE IS A LINK
BETWEEN THE THOUGHTS OF MAN." —Marcel Marceau

accomplishes in less than five minutes what most novelists can not do in volumes."

In 1948 he received the renowned Deburau Prize (established in memory of the great nineteenth-century Pierrot). Marcel Marceau formed his *Compagnie de mime Marcel Marceau*—the only company of pantomime in the world at that time—and played in the leading Paris theaters as well as other playhouses in Europe, Canada and South America. With his company, he produced, directed and played twenty-six mimodramas, including *Pierrot de Montmartre*, *The Three Wigs*, *The Pawn Shop*, *14th July*, *The Wolf of Tsu-Ku-Mi*, *Paris laughs—Paris cries* and *Don Juan* (adapted from Tirso de Molina).

Marcel Marceau first toured the US between 1955-56, soon after his North American debut at the Stratford Festival. This first US tour ended with a record-breaking return to New York's City Center in the spring of 1956 after playing to standing-room-only crowds in San Francisco, Chicago, Washington, Philadelphia, and Los Angeles. He has since toured the US on a regular

Awards for his television shows (*The Maurice Chevalier Show* and *Laugh In*). He appeared on the BBC as seventeen different characters in *A Christmas Carol* in 1973, and appeared in thirteen films produced by Encyclopedia Britannica, which included Bip and the style pantomimes. He has been the television guest of Johnny Carson, Merv Griffin, Mike Douglas, and Dinah Shore, and teamed with Red Skelton in three concerts of pantomimes.

Marcel Marceau has demonstrated his versatility in motion pictures, such as *Barbarella* with Jane Fonda, directed by Roger Vadim, and *Shanks*, directed by Bill Castle, in which he combined his silent art and voice by playing a deaf mute puppeteer and a speaking mad scientist. He said the only word ("No") in Mel Brooks' *Silent Movie*.

Children have been delighted by *The Alphabet Book* and *Marcel Marceau's Counting Hat Book*. Other publications of Marceau's paintings, poetry and illustrations include his *La Ballade de Paris et du Monde*, *Les Rêveries du*

Bip, The Story of Bip (Harpers and Row), *Pimporello* (Belfond Paris), and *The Third Eye* (Paris Lithoprint).

The French Government has conferred upon Mr. Marceau its highest honors: Officier de la Légion d'Honneur, Commandeur des Arts et Lettres, and Grand Officier de l'Ordre National du Mérite. He is an elected member of the Academy of Fine Arts in Berlin, the Academy of Fine Arts in Munich, and is a member of the prestigious Institut de France. His Ecole Internationale de Mimodrame de Paris, which offers a two-year curriculum, has been subsidized since 1978 by the City of Paris.

Mr. Marceau holds honorary doctorates from Princeton University, Ohio State University, Linfield College, and the University of Michigan at Ann Arbor.

The 1997-98 season marked the fiftieth anniversary of Marcel Marceau's famous character Bip. In that season, he created with his Company a new mimodrama, *The Bowler Hat*, presented in Paris at the Espace Pierre Cardin for two months with great success, and since seen in London, Tokyo, Taipei, Caracas, Santo Domingo, Valencia (Venezuela), Munich and New York City, as well as a tour of France. Since 1999, when Marceau returned with his classic solo show to New York City and San Francisco after fifteen-year absences for critically-acclaimed sold-out runs, his career in America has enjoyed a remarkable renaissance with strong appeal to a third generation. He has since appeared for extended engagements at such legendary American theaters as the Ford's Theatre in Washington, DC and the American Repertory Theatre in Cambridge, MA, to overwhelming acclaim, demonstrating the timeless appeal of the work and the mastery of this unique artist. Marceau's work has significance to the training, not only of mimes, but also of dancers and actors. As the recipient of the University Musical Society's 2001 Distinguished Artist Award,

Marceau is currently participating in a two-week residency in Ann Arbor, Michigan that includes extensive teaching as well as performing. In Ann Arbor, he offered the prestigious Wallenberg Lecture, touching on his early years in Nazi-occupied France, and offered his first workshop specifically for dancers. Marceau is at work on a new book for children to be published in the fall when he will again tour America.

The 2001 Ford Honors Program marks Marcel Marceau's thirtieth appearance under UMS auspices. Mr. Marceau made his UMS debut on Friday evening, October 15, 1971 at the brand-new Power Center for the Performing Arts on the University of Michigan campus. Mr. Marceau's debut occurred only two weeks after the Power Center first opened with the world première of *The Grass Harp* (based on the novel by Truman Capote). This would be Mr. Marceau's first of twenty-nine performances in ten appearances under UMS auspices. Two of these ten appearances were presented as part of the Ann Arbor Summer Festival, then programmed by the University Musical Society; the Summer Festival became a separate organization in 1986. In addition to Mr. Marceau's UMS appearances, he has made four appearances under Ann Arbor Summer Festival auspices beginning with performances on July 17-18, 1986. Mr. Marceau last appeared under UMS auspices on October 30, 1992 and last performed in Ann Arbor on July 10, 1999. Marcel Marceau received an honorary degree from the University of Michigan in 1985.

Gyöngyi Biro

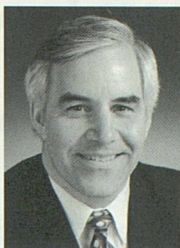
Mime

Gyöngyi Biro was born in Cluj, Romania. She graduated from Marcel Marceau's International School of Mime in 1993 and is currently a member of the mime company Theatre Espace Imaginaire, with which she has created two works: *Le Placard* (1993), which toured France and Great Britain, and *La Girandole* (1995), which was presented at the Cognacq Jay Museum in Paris. She joined the Nouvelle Compagnie de Mimodrame Marcel Marceau in 1995 in the cast of *The Overcoat*, touring in Spain, Germany, Norway and Japan, and again in *The Bowler Hat*, which opened in Paris in 1997 and has since been performed in South America, Asia and throughout Europe. In 1996 she assisted Marcel Marceau in Oguni, Japan, and has since participated in Marceau's *One Man Show Fiftieth Anniversary Tour* worldwide.

This performance marks Gyöngyi Biro's UMS debut.

Kenneth C. Fischer

Host



Kenneth C. Fischer is the President of the University Musical Society (UMS). Before assuming his present position at UMS in 1987, Mr. Fischer was a management consultant, independent concert presenter, and association executive in Washington, DC for seventeen years. Mr. Fischer is active in a number of community and professional organizations including Rotary International, Chamber Music America, United Negro College Fund, International Society for the Performing Arts, Association of Performing Arts Presenters, American Arts Alliance and Classical Action/Performing Arts Against AIDS. Mr. Fischer grew up in nearby Plymouth, Michigan, attended the Interlochen Arts Camp, and has degrees from The College of Wooster in Ohio and the University of Michigan. He is married to flutist Penelope Peterson Fischer. They have one son, Matthew, living in San Francisco.

THE FORD HONORS PROGRAM

The Ford Honors Program is a University Musical Society gala event made possible by a generous grant from Ford Motor Company and by the special support of many other companies and individuals. Each year UMS honors a world-renowned artist or ensemble with whom UMS has maintained a long-standing and significant relationship. In one evening, UMS pays tribute to and presents the artist with the UMS Distinguished Artist Award, and hosts a dinner in the artist's honor. Proceeds from the evening benefit the UMS Education Program. Previous awardees are Van Cliburn (1996), Jessye Norman (1997), Garrick Ohlsson (1998), The Canadian Brass (1999) and Isaac Stern (2000).

In 1918, **Gail W. Rector** was born in North Platte, Nebraska, the son of Homer and Lillian Rector. In 1945, he married Kathryn Swain. They have three children: Richard, Ellen, and Patricia. In 1980 he married South Carolina native Elizabeth Pitcher and currently resides with her in Winston-Salem, North Carolina.

In his earliest years, Mr. Rector majored in bassoon performance in high school, Chicago's Civic Orchestra, and the University of Michigan, where he received his Bachelor of Music degree in 1940 and continued studies for a year when drafted into the US Army. He spent the next three years in the South Pacific, including combat on Guadalcanal and Bougainville, before being assigned to the Americal Division. He returned

Furniture Made From Sunken Treasure!

*Come See The New Echoes Collection
by Leick Furniture*

Rare lost timbers from Lake Superior's Chequamegon (she-Wah-me-gon) Bay were used to craft these limited edition offerings. You'll believe they are right out of the late 1800's Arts and Crafts movement. For more information call: 475-8621 or 1-800-482-3650



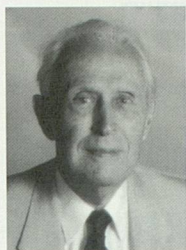
OPEN 7 DAYS! Monday, Thursday and Friday until 8:30pm

Merkel

FURNITURE AND CARPET ONE
76 Years on Main Street in Chelsea

to the States as first lieutenant and trained recruits until he was honorably discharged from active duty on December 2, 1945.

That fall, he returned to Ann Arbor and became associated with the University Musical Society (UMS), where he worked as a member of the staff for nine years before accepting the position of Assistant Manager of the Boston Symphony Orchestra in 1954. He served the Orchestra for three years and traveled throughout the US East Coast, Europe, and Russia. During the summers he also served as Executive Director of the Berkshire Music Center at Tanglewood.



In 1957 Mr. Rector returned once again to Ann Arbor, this time as Executive Director of the University Musical Society. He became President of UMS in 1959 and presented over 1200 concerts in various series and May Festivals (prominently featuring the Philadelphia Orchestra), and inaugurated new chamber music, recital, opera, ballet series and the Ford Fairlane Summer Festival in Dearborn. He also founded the Ann Arbor Summer Festival and "Top of the Park" activities before retiring in 1987. He worked closely with the UMS Choral Union, and took the ensemble and associate members on concert tours to Europe, including France, Italy, Czechoslovakia, Spain and Egypt.

After retirement he was Executive Director of Detroit Orchestra Hall for three years, where he engaged visiting artists in over thirty concerts.

In 1995, Gail and Beth moved to Richmond, Virginia, where he was a consultant for concerts at Commonwealth University; in 1997 they moved to Winston-Salem, North Carolina, where he is currently serving on the Board of Directors for the Moravian Music Foundation and the Salem College School of Music. He is also a consultant on the Program Committee for Reynolds Auditorium, which is scheduled to open after renovations in 2002.

John M. Rintamaki is Group Vice President and Chief of Staff of Ford Motor Company. He assumed this position on January 1, 2000. Prior to this, he served as Vice President—General Counsel and Secretary.

In his new role, Mr. Rintamaki is responsible for the activities of Ford's Governmental Affairs, Office of the General Counsel, Environment and Safety Engineering, Dealer Policy Board, and the Ford Fund. He also continues to serve in his role as Corporate Secretary.

Mr. Rintamaki joined Ford Motor Company in July 1973 as an attorney with Philco-Ford Corp. after serving nine years as an attorney and officer in the US Army's Judge Advocate General's Corps at various locations in the United States and the Far East.

He joined Ford's Office of the General Counsel in September 1978 as a senior attorney handling international matters. Six years later, he was named Associate Counsel—Corporate Financing. In September 1986, he was named Assistant Secretary and Associate Counsel. In October 1991, he was appointed Assistant



Secretary and Assistant General Counsel—SEC and Corporate Matters. He was elected Corporate Secretary and Assistant General Counsel in 1993 and then appointed Vice President—General Counsel and Secretary in January 1999.

Mr. Rintamaki also is a member of the Board of Directors of The Hertz Corporation.

Born on March 2, 1942 in Wakefield, Michigan, Mr. Rintamaki earned a bachelor's degree in Business Administration from the University of Michigan and graduated with distinction. He graduated *cum laude* from the University of Michigan Law School and is a member of Phi Kappa Phi Honor Society. He is a member of the Michigan and Pennsylvania bars.

He lives in Ann Arbor.



ANN ARBOR SUMMER FESTIVAL 2001

TICKETS ON SALE NOW



MICHAEL MOSCHEN IN MOTION

BACHRACH PHOTOGRAPHY © 1999

At the Power Center, Ann Arbor
TUESDAY, JUNE 26, 8 p.m.

Tickets available by calling (734) 764-2538 or by visiting the Power Center Box Office. Tickets also available through all TicketMaster outlets. Visit our website at www.mlive.com/aasf. For a season brochure, call (734) 647-2278.

MADE POSSIBLE IN PART BY:



MAY 19 **AL GREEN** HILL AUDITORIUM 8:00PM

POWER CENTER SERIES ALL SHOWS 8:00PM UNLESS NOTED

JUNE 16 **POWER CENTER OPENING NIGHT**
I LOVE YOU, YOU'RE PERFECT, NOW CHANGE

JUNE 17 **THE PERSUASIONS**

JUNE 19 **AQUILA THEATRE COMPANY**
SHAKESPEARE'S *MUCH ADO ABOUT NOTHING*

JUNE 20 **KLEZMER CONSERVATORY BAND**

JUNE 22 **PHILADANCO!** THE PHILADELPHIA DANCE COMPANY

JUNE 23 **SONNY ROLLINS**

JUNE 24 **AN AFTERNOON WITH TERRY GROSS** 4:00 PM

JUNE 26 **MICHAEL MOSCHEN IN MOTION**

JUNE 27 **IRIS DEMENT AND SAM BUSH**

JUNE 28 **PATRICIA BARBER AND KURT ELLING**

JUNE 29 **ARTURO SANDOVAL**

JUNE 30 **M O M I X**

JULY 01 **THE FLAMING IDIOTS**

JULY 03 **FLACO JIMENEZ**
WITH RICHARD HAILEY AND THE NEON STARS

JULY 04 **CAPITOL STEPS** 2 SHOWS 5PM & 8PM

JULY 05 **THE CHENILLE SISTERS**

JULY 06 **IRA BERNSTEIN** AND THE TEN-TOE PERCUSSION EMSEMBLE

JULY 07 **BILLY TAYLOR AND RAMSEY LEWIS**

MONDAYS AT MENDELSSOHN

JUNE 18 **SARAH VOWELL** MENDELSSOHN THEATRE 8:00PM

JUNE 25 **SANDRA TSING LOH** MENDELSSOHN THEATRE 8:00PM

JULY 02 **JOSH KORNBLOTH** MENDELSSOHN THEATRE 8:00PM

Committees & Donors

HONORARY CO-CHAIRS

PRESIDENT LEE C. BOLLINGER *and* JEAN MAGNANO BOLLINGER

The University of Michigan

JOHN M. *and* MARILYN A. RINTAMAKI

Ford Motor Company

GAIL W. *and* ELIZABETH G. RECTOR

President Emeritus, University Musical Society

The Ford Honors Program is made possible by Ford Motor Company Fund.

GALA COMMITTEE CO-CHAIRS

MARY PITTMAN

NITA COX

BRAVISSIMO

Ford Motor Company Fund
Forest Health Services
Visteon

MAESTRO

Kathleen Benton and
Robert Brown
Ed and Judi Carlson
Peter and Jill Corr
William and Jane Hann /
Key Bank
Richard and Sylvia Kaufman
Gilbert Omenn and
Martha Darling
Maya Savarino
Herbert Sloan
Richard and Laura Van House

VIRTUOSO

Carl and Isabelle Brauer
Dave and Pat Clyde
David and Jo-Anna Featherman
Ray and Patricia Fitzgerald
Norman and Debbie Herbert
Leo and Kathy Legatski
Richard Levey and
Sigrid Christiansen
Maria and Rusty Restuccia
Steve and Cynny Spencer
Paul and Liz Yhouse

PRINCIPAL

Bernard and Ricky Agranoff
Herb and Carol Amster
Barbara Anderson and
John Romani
Paul Boylan
Barbara Everitt Bryant
Edwin and Judy Carlson
Leon and Heidi Cohan
Thomas and Elaine Evans
Ken and Penny Fischer
Elizabeth Needham Graham
Don and Carolyn Dana Lewis
Richard and Stephanie Lord
Roger and Judy Maugh
Jan Barney Newman
Dr. and Mrs. Frederick O'Dell
John Paulson
Jerry and Lorna Prescott
John and Dorothy Reed
Loretta Skewes
Edward and Natalie Surovell
Ronald and Eileen Weiser
Dody Viola

List reflects reservations received as of April 9, 2001.

UNIVERSITY MUSICAL SOCIETY
of the University of Michigan

UMS BOARD OF DIRECTORS

Beverly B. Geltner, <i>Chair</i>	Janice Stevens Botsford	Leo A. Legatski	Maya Savarino
Lester P. Monts, <i>Vice-Chair</i>	Barbara Everitt Bryant	Helen B. Love	Erik H. Serr
Len Niehoff, <i>Secretary</i>	Kathleen G. Charla	Barbara Meadows	Herbert Sloan
David Featherman, <i>Treasurer</i>	Jill A. Corr	Alberto Nacif	Timothy P. Slottow
Lee C. Bollinger	Peter B. Corr	Jan Barney Newman	Peter Sparling
	William S. Hann	Gilbert S. Omenn	James L. Telfer
	Toni Hoover	Randall Pittman	Clayton Wilhite
	Alice Davis Irani	Rossi Ray-Taylor	Karen Wolff
	Gloria James Kerry	Prudence L. Rosenthal	Elizabeth Yhouse

UMS SENATE

(former members of the UMS Board of Directors)

Robert G. Aldrich	Robert F. DiRomualdo	Thomas C. Kinnear	Richard H. Rogel
Herbert S. Amster	James J. Duderstadt	F. Bruce Kulp	Ann Schriber
Gail Davis Barnes	Robben W. Fleming	Earl Lewis	Daniel H. Schurz
Richard S. Berger	David J. Flowers	Patrick B. Long	Harold T. Shapiro
Maurice S. Binkow	Randy J. Harris	Judythe H. Maugh	George I. Shirley
Paul C. Boylan	Walter L. Harrison	Paul W. McCracken	John O. Simpson
Carl A. Brauer	Norman G. Herbert	Rebecca McGowan	Carol Shalita Smokler
Allen P. Britton	Peter N. Heydon	Alan G. Merten	Lois U. Stegeman
Letitia J. Byrd	Howard Holmes	Joe E. O'Neal	Edward D. Surovell
Leon S. Cohan	Kay Hunt	John D. Paul	Susan B. Ullrich
Jon Cosovich	Stuart A. Isaac	Wilbur K. Pierpont	Jerry A. Weisbach
Douglas Crary	Thomas E. Kauper	John Psarouthakis	Eileen Lappin Weiser
Ronald M. Cresswell	David B. Kennedy	Gail W. Rector	Gilbert Whitaker
John D'Arms	Richard L. Kennedy	John W. Reed	Marina v.N. Whitman
			Iva M. Wilson

ADVISORY COMMITTEE

Robert Morris, <i>Chair</i>	Nita Cox	Debbie Herbert	Ieva Rasmussen
Sara Frank, <i>Vice-Chair</i>	Mary Ann Daane	Mercy Kasle	Penny Schreiber
Louise Townley, <i>Secretary/Treasurer</i>	Norma Davis	Steve Kasle	Sue Schroeder
Raquel Agranoff	Sally Stegeman DiCarlo	Anne Kloack	Meg Kennedy Shaw
Martha Ause	Lori Director	Maxine Larrouy	Aliza Shevrin
Barbara Bach	Betty Edman	Beth LaVoie	Morrine Silverman
Lois Baru	Michael Endres	Stephanie Lord	Maria Simonte
Kathleen Benton	Andra Bostian Ferguson	Esther Martin	Loretta Skewes
Mimi Bogdasarian	Nancy Ferrario	Mary Matthews	Cynny Spencer
Victoria Buckler	Penny Fischer	Ingrid Merikoski	Bryan Ungard
Barbara Busch	Anne Glendon	Ernest Merlanti	Suzette Ungard
Laura Caplan	Maryanna Graves	Jeanne Merlanti	Dody Viola, <i>ex officio</i>
Cheryl Cassidy	Linda Greene	Candice Mitchell	Wendy Woods
Patrick Conlin	Karen Gundersen	Nancy Niehoff	
Elly Rose Cooper	Nina E. Hauser	Meeyung Schmitter	
	Kathy Hentschel	Mary Pittman	

UMS STAFF

**ADMINISTRATION/
FINANCE**

Kenneth C. Fischer,
President
Deborah S. Herbert, *RSC*
Residency Coordinator
Elizabeth E. Jahn,
Assistant to the
President
John B. Kennard, Jr.,
Director of
Administration
Chandrika Patel, *Senior*
Accountant
John Peckham,
Information Systems
Manager

BOX OFFICE

Michael L. Gowing,
Manager
Sally A. Cushing, *Staff*
Ronald J. Reid, *Assistant*
Manager and Group
Sales

CHORAL UNION

Thomas Sheets,
Conductor
Andrew Kuster, *Associate*
Conductor
Jean Schneider-Claytor,
Accompanist
Kathleen Operhall,
Manager
Donald Bryant,
Conductor Emeritus

DEVELOPMENT

Christina Thoburn,
Director
Mary Dwyer, *Manager of*
Corporate Support
Karen Meske, *Advisory*
Committee and Events
Coordinator
William Maddix,
Associate
Lisa Michiko Murray,
Manager of
Foundation and
Government Grants
Lisa Rozek, *Administrative*
Assistant
J. Thad Schork, *Direct*
Mail, Gift Processor
Anne Griffin Sloan,
Assistant Director –
Individual Giving

**EDUCATION/AUDIENCE
DEVELOPMENT**

Ben Johnson, *Director*
Kristin Fontichiaro, *Youth*
Education Manager
Dichondra Johnson,
Coordinator
Warren Williams,
Manager

**MARKETING/PUBLIC
RELATIONS**

Sara Billmann, *Director*
Aubrey Alter, *Coordinator*
Ryonn Clute, *Coordinator*

Gulshirin Dubash, *Public*
Relations Manager

**PRODUCTION AND
SPECIAL PROJECTS**

Emily Avers, *Interim*
Director
Jerica L. Humphrey,
Front-of-House
Coordinator
Laura Birnbryer, *Artist*
Services Coordinator
Carla Dirlikov, *Artist*
Services Assistant
Production Supervisors
Mary Cannon
Steven Jarvi
Usher Supervisors
Paul Jomantas
Bruce Oshaben
Head Ushers
Ken Holmes
Joyce Holmes
Brian Roddy
Sanjay Pavipati
Nancy Paul
Edward Szabo

PROGRAMMING

Michael J. Kondziolka,
Director
Mark Jacobson, *Manager*

WORK-STUDY

Erika Banks
Megan Besley
Eric Blanchard

Jo Chen
Patricia Cheng
Tamara Dawson
Joel Edel
Patrick Elkins
Christine Field
Mariela Flambury
Jamie Freedman
Milena Grubor
David Her
Benjamin Huisman
Laura Kiesler
Christopher Lee
Dawn Low
Rossalyn Quaye
Rosie Richards
Jennifer Salmon
Angela Sitz
Corey Triplett
Sean Walls

INTERNS

Dawn Coraci
Erin Dahl
Robert Frey
Kathleen Meyer
Shauna Voelz

PRESIDENT EMERITUS

Gail W. Rector

UMS TEACHER ADVISORY COMMITTEE

Fran Ampey
Kitty Angus
Alana Barter
Joseph Batts
Kathleen Baxter
Elaine Bennett
Lynda Berg
Yvette Blackburn
Barbara Boyce
Letitia Byrd

Doug and
Nancy Cooper
Naomi Corera
Gail Davis Barnes
Gail Dybdahl
Keisha Ferguson
Doreen Fryling
Brenda Gluth
Louise Gruppen
Vickey Holley Foster

Taylor Jacobsen
Callie Jefferson
Deborah Katz
Deb Kirkland
Rosalie Koenig
David Leach
Rebecca Logie
Dan Long
Laura Machida
Ed Manning

Glen Matis
Kim Mobley
Ken Monash
Eunice Moore
Denise Murray
Amy Pohl
Rossi Ray Taylor
Gayle Richardson
Katy Ryan
Karen Schulte

Helen Siedel
Joan Singer
Sue Sinta
Grace Sweeney
Sandy Trosien
Melinda Trout
Sally Vandeven
Barbara Wallgren
Jeanne Weinch

Acknowledgements

UMS would like to give special thanks to the following people who have made special contributions of time, talent, and service during the 2000/2001 Season.

Many members of our community were integral to the overwhelming success of UMS' exclusive US presentation and accompanying residency at the University of Michigan with the Royal Shakespeare Company in March of 2001. UMS would like to denote these outstanding individuals, organizations, and companies within the list below by highlighting their names with an asterisk (*).

Special appreciation goes to:

Bill Abbott*	Jo Broughton	Jacquilyn Dudley	Homewood Press
Aerial Enterprises/Jim Lillie*	Faye Burton	Eastern Michigan University Theatre Department*	Judith Hommel
Robert Albritton	Susan Byrnes	Carol Edwards	Barbara Hoover
Alice D. Irani Immigration Law*	Susan Campos	Emerson School	Luke Howard
Sharon Allen	Campus Inn*	Fast Signs of Ypsilanti*	Hyatt Regency Hotels*
Blair Anderson	Nancy Cantor	Shari Faulhaber*	International Alliance of Theatrical Stage Employees, Ann Arbor Local 395*
Naomi André	Bert Cardullo*	Susan Filipiak	Simone Jenkins
Adria Andrews	Cass Technical High School*	Alan Fisk	Michael Jewett
Ann Arbor Area Convention and Visitors Bureau*	Meg Pennington Castro	Flint Shakespeare Club*	Larry Johnson
Ann Arbor Hands-On Museum	Sueann Caulfield	Dwight Fontenot	Paul Juhasz
Ann Arbor News	Tamar Charney	Food Art*	Dino Kalogeropoulos*
Ann Arbor Shakespeare Club*	Sumita Chaudrey	Ford Motor Company Fund*	Ellen Katz*
Ann Arbor Transportation Authority*	Linda Chomin	Forest Health Services*	Martin Katz
Lynne Aspnes	Chris W. Petersen Jewelry Design*	Vicky Holley Foster	Phillip Kerr*
Arthur Andersen LLP*	Thomas Ciul	Erik Fredricksen	Bill Kirby
Arts at Michigan*	Jim Cogswell	Jim Frenza	Carey Kocher
Ascott T-Shirts	Jenice Collins	Beth Genne	Martin Kohn
Martin Bandyke	Colonial Press, Inc./John McKeighan*	Penny Godboldo	Peter Laki
Susan Barnes	Claire Conceison*	Golden Limousine*	Barry LaRue*
Joshua Baron	Diana Cordero*	Chris Goldberg	David Leach
Christina Batten	Mary Craig	Rachel Goldschneider	Leopold Brothers Brewery and Greenhouse*
Brett Batterson	Current	Liz Goodenough	Richard LeSueur
Kathy Beam	Ron Cypert*	Mark Gordon*	David Lieberman
Bell Tower Hotel*	Kirsten Dahlberg	Arthur Greene	Jackson Lockhard*
Harriet Berg	Dance Gallery	Robert Grijalva	Jean Loup
Lynda Berg	Dr. James Darga	Hammell Music/Christopher Claypoole	John Lusk
Terry Blackhawk	David Smith Photography/ David and Peter Smith*	Jim Haven	David Lyman
Jerry Blackstone	David and Peter Smith*	Dr. Rudolph V. Hawkins	Laura Machida
Erika Block	Darrin DeMott	Cal Hazelbaker*	Main Street Area Association
Enoch Brater*	Gary Decker*	Henry Ford Museum and Greenfield Village*	Vickie Malcolm
	Gaye Delange	Heritage School of Saline*	Barbara Martin
	Detroit Free Press	Corrie Hix	
	Detroit Public Schools		
	Detroit News		

Bruce Martin	Pfizer*	Lucia Suarez	U-M Transportation
Terry Martin	Bob Picard	Karen Szymanski	Services/Jean Boote*
Christian Matijias	The Power Foundation/ Philip and Kathleen	Joe Tiboni	Unit Packaging
Nzinga Matthews	Power*	Louise Townley	University Productions*
Greg Mazure	Eva Powers	Robbie Townsel-Dye	WDET
Carla Mazzio	Mary Price	Val Traub	WEMU
Pat McClary	Hillary Ramsden	Sandy Trosien	WGTE
MC Design/Margot Campos*	Julie Ranspach*	George Tysh	Walk & Squawk*
Father James McDougal	Stella Raudenbush	Nancy Uffner	Barbara Wallgren
McKay Press	Republic Parking*	U-M Alumni Association*	Martin Walsh*
McKinley Associates Inc.*	Cherie Rehkopf	U-M Alumni Center/ Mike Jankowski	Gary Ward
Joyce Meier	Kate Remen-Wait	U-M Bentley Library*	Marc Warren*
Kate Mendeloff*	Donovan Reynolds	U-M Department of Athletics*	Washtenaw Community College*
Metro Times	H. Robert Reynolds	U-M Department of English*	Washtenaw Intermediate School District*
Michigan Car Services/ Jerry Armstrong*	Alice Rhein	U-M Department of Theatre and Drama*	Wayne County Regional Educational Service Agency*
Michigan Council for Arts and Cultural Affairs*	Shannon Rice	U-M Development Events*	Wayne State University*
Michigan Daily	Pastor Garther Roberson	U-M Institute for Research on Women and Gender*	Jan Wells*
Michigan Front Page	Dr. Phillip Rodgers*	U-M Institute for the Humanities*	White Pine Printers/ Barbara Kehoe
Michigan Media/ Joe Yunkman	Prue Rosenthal	U-M Media Union/ Tom Bray	Stephen Whiting
Michigan Radio	Rudolf Steiner School	U-M Medieval and Early Modern Studies*	Professor Ralph Williams*
John Minor*	The Rudy Hawkins Singers	U-M Office of Marketing Communications*	Robin Wilson
Eunice Moore	Kelly Salow*	U-M Office of the General Counsel*	Eliza Woodford
Matt Morgan	Sanctuary Massage/ Kevin Costello	U-M Office of the President*	Leigh Woods*
Theo Morrison	Terri Sarris	U-M Office of the Provost*	Ralph Valdez
Mosaic Youth Theater	Savitski Design/Mike Savitski and Susan Thompson*	U-M Office of the Vice President for Communications*	Carina Yervasi
Jon Moshier	Ena Schlorf	U-M Office of the Vice President for Government Relations*	Linda Yohn
Molly Motherwell	David Schoem	U-M Photo Services	Ypsilanti High School*
Vince Mountain	David Schoenfeldt	U-M Public Goods Council*	Zingerman's*
Denise Murray	Mike Scobey	U-M Residential College*	
Louis Nagel	George Shirley	U-M School of Information and CHICO*	
Inna Naroditskaya	Ruth Slavin	U-M Special Collections Library, Hatcher Graduate Library*	
Patrick Naswell*	Dr. George Smillie*	UMS Royal Shakespeare Company Residency Committee*	
National Endowment for the Arts*	Carolyn Smith		
Susan Isaacs Nisbett	Tony Smith		
Observer/Eccentric Newspapers	Kim Snyder		
O'Neal Construction Company*	Rick Sperling		
Marysia Ostafin	State of Michigan*		
Mary Palmer*	State Street Area Association*		
Mike Patterson*	St. Clair County Community College*		
Willis Patterson	Abby Stewart		
Chet Pawloski	St. Francis of Assisi/ David Barrera		
Juliana O'Brien Pederson	Coreena Storms		
Michelle Peet	Brad Stroud		
Performance Network*	Mark Stryker		
Dr. James Peggs*			

UMS also acknowledges the extraordinary contributions of its Board of Directors, Senate, Advisory Committee, Teacher Advisory Committee, and Staff, whose names are listed elsewhere in this program book.

University of Michigan • Ann Arbor

university musical society



Shockheaded Peter (A Junk Opera)
Featuring The Tiger Lillies

Liz Lerman Dance Exchange: *Hallelujah!*

Berlin Philharmonic
Claudio Abbado conductor

Lincoln Center Jazz Orchestra
Wynton Marsalis artistic director

Chunky Move

Evgeny Kissin piano

Gypsy Caravan II: A Celebration
of Roma Music and Dance

Theatre de la Jeune Lune: Molière's *Tartuffe*

Hagen Quartet

St. Petersburg Conservatory Chamber Ensemble

Philip on Film:
Dracula
Shorts (new short films by contemporary filmmakers)
Koyaanisqatsi
Live music performed by Philip Glass
and the Philip Glass Ensemble

Netherlands Chamber Choir

Gluck's *Orfeo ed Euridice*
Peter Sparling Dance Company
Ann Arbor Symphony Orchestra

Anne-Sophie Mutter violin
and the Trondheim Soloists

Sweet Honey in the Rock

Andreas Scholl countertenor

Joshua Redman Quartet and Brad Mehldau Trio

Handel's *Messiah*

Kirov Orchestra of the Mariinsky Theatre
Valery Gergiev conductor
Alexander Toradze piano

Les Arts Florissants
Christmas Music of Marc-Antoine Charpentier
William Christie conductor

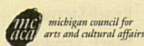
Stephan Genz baritone

Rennie Harris Puremovement: *Rome & Jewels*

Brentano String Quartet and Mark Strand poet
Haydn's *Seven Last Words of Christ*

A Tribute to Gospel Legend Mattie Moss Clark

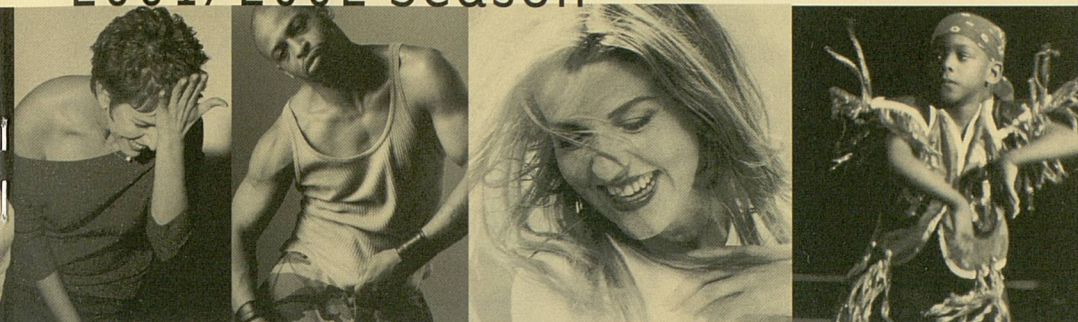
Orchestre de Paris
Christoph Eschenbach conductor
Pierre-Laurent Aimard piano



michigan council for
arts and cultural affairs

| 734.764.2538

2001/2002 Season



Charlie Haden's Quartet West with Strings
Bill Henderson and Ruth Cameron vocals

Da Camera of Houston: *Marcel Proust's Paris*
American String Quartet
William Sharp baritone

The Chieftains

A Solo Evening with Laurie Anderson

Children of Uganda

Harolyn Blackwell soprano
Florence Quivar mezzo-soprano
From the Diary of Sally Hemings

Collegium Vocale Gent and Ensemble Modern

San Francisco Symphony
Michael Tilson Thomas conductor

Boys Choir of Harlem

SamulNori

St. Petersburg Philharmonic Orchestra
Yuri Temirkanov conductor
Leif Ove Andsnes piano

Guthrie Theater: Eugene O'Neill's *Ah, Wilderness!*

Los Muñequitos de Matanzas

The Tallis Scholars

Da Camera of Houston:
Epigraph for a Condemned Book
Sarah Rothenberg director and pianist
Music by Frédéric Chopin
Texts by Charles Baudelaire

Twyla Tharp Dance

Brahms' German Requiem
UMS Choral Union
Ann Arbor Symphony Orchestra

Emerson String Quartet and
Kalichstein-Laredo-Robinson Trio

Afro-Cuban Dance Party with
Celia Cruz and Albita

Wayne Shorter Quartet

Les Musiciens du Louvre
Marc Minkowski conductor
Anne Sofie von Otter mezzo-soprano

Takács Quartet and Robert Pinsky poet
All the World for Love

Ian Bostridge tenor

Lyon Opera Ballet: *Cendrillon* ("Cinderella")

Outside the 734 area code, call toll-free **800.221.1229**

UMS BOX OFFICE LOCATED IN THE POWER CENTER, 121 FLETCHER ST

HOURS M-F 10AM-6PM, SAT 10AM-1PM • SUMMER HOURS (beginning May 21) M-F 10AM-5PM

www.ums.org

Education and Audience Development



Students enjoy a UMS youth performance of Balé Folclórico da Bahia.

PROVIDING WORLD-CLASS EDUCATIONAL EVENTS AND cultural exchange to communities throughout southeastern Michigan, the UMS Education and Audience Development Department maintained

its growth in many areas throughout the 2000/2001 season. Nearly 15,000 K-12 students and educators attended the Youth Performance Program. Additionally, the 2000/2001 season saw an unprecedented turnout of college-aged students and adults with over 30,000 people attending the wide array of educational events sponsored by UMS. This growth and success confirms UMS' firm commitment to making quality educational experiences a part of everyone's performance-going experience.

Through dedicated, active committees, including the Education and Audience Development Board Sub-Committee, the Teacher Advisory Committee, and over seventy community partners and hundreds of community volunteers, the University

Musical Society actively seeks new audiences through a wide variety of activities designed for different ages and learning styles. We recognize that every single person is an individual, and we are hoping to build our audience one by one, paying close attention to each person's relationship to the arts.

The following pages describe our current program and show memorable highlights of the past season. Be sure to check-out the UMS fall brochure and the UMS website (www.ums.org) for details on the exciting and diverse array of educational events for the 2001/2002 season, which will include major residencies by the the Liz Lerman Dance Exchange, the San Francisco Symphony, and a series of "Literary Chamber" performances.

 THE 2000/2001 SEASON INCLUDED:

A STELLAR YOUTH PERFORMANCE SERIES

This program is dedicated to the creative teachers and intelligent children actively involved in our UMS education programming. Over 15,000 students and educators attended performances of the American Repertory Theater: *The King Stag*, Balé Folclórico da Bahia, Anoushka Shankar and Ensemble, Mingus Big Band, Alvin Ailey American Dance Theater, Hubbard Street Dance Chicago, Royal Shakespeare Company: *Richard III*, and Ronald K. Brown/Evidence. Each classroom received teacher resource and learning materials, photographs, audiotapes and videotapes. UMS also offered many opportunities to take artists and arts educators into the schools, of particular note, Anoushka Shankar and Ensemble's acclaimed performance in Pattengill Elementary.

FIRST ACTS

In its third year, First Acts sponsored over 400 students to attend classical music concerts. This unique program works to eliminate the barriers that prevent teachers and students from attending UMS performances by providing free busing, subsidized tickets, and preview materials. Encouraging students to attend symphony orchestra concerts and chamber music performances is one of the most important initiatives that UMS can embark upon to preserve the future of classical music presentation in Ann Arbor.

UMS TEACHER WORKSHOP SERIES

Arts education provides active learning experiences for students' academic and creative growth. Helping educators incorporate arts education

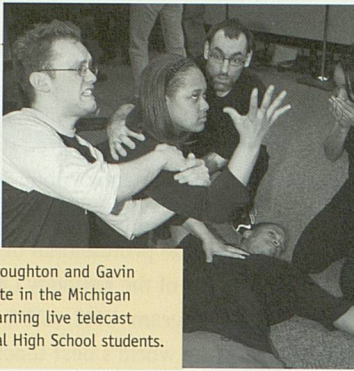
into their daily instruction is a key goal at UMS, which is why UMS has partnered (for over six years) with the Ann Arbor Public Schools (AAPS) and the Washtenaw Intermediate School District (WISD) to facilitate professional development for teachers. As part of the Kennedy Center: Partners in Education Program, UMS, AAPS, and WISD are able to bring the world's best teacher workshops to southeastern Michigan. This past year, over 170 teachers participated in eight workshops as part of this nationally recognized program.

FAMILY PERFORMANCES

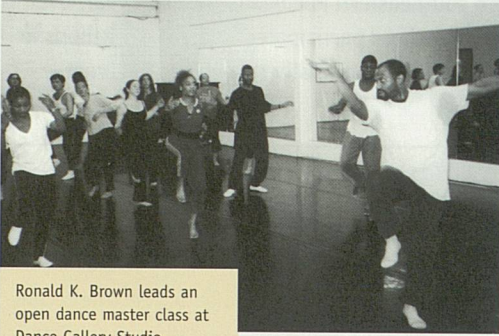
The University Musical Society has consistently provided family performances to southeastern Michigan for nearly a decade, and it will continue to do so in the future. Recognizing the importance of multigenerational learning and parental involvement in their children's appreciation of the performing arts, UMS offered four world-class, family performance opportunities with American Repertory Theater: *The King Stag*, Balé Folclórico da Bahia, Pilobolus, and the Alvin Ailey American Dance Theater.

MASTER OF ARTS PUBLIC INTERVIEW SERIES

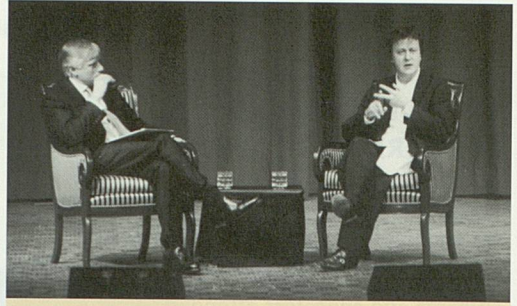
Aside from the performance, UMS offers a series of public interviews that allow artists to speak about their art forms, their careers and take questions from the community. Each year, UMS selects artists who offer compelling insights into their world, and this season over 2,000 people attended the series of eight interviews by the actors of the Gate Theater of Dublin, Michael Boyd and Adrian Noble of the Royal Shakespeare Company, the company members of Balé Folclórico da Bahia, Menahem Pressler, Sue Mingus, Dubravka Tomsic, Mark Morris, Ping Chong and Benjamin Bagby.



RSC actors Sam Troughton and Gavin Marshall participate in the Michigan Long-Distance Learning live telecast with Cass Technical High School students.



Ronald K. Brown leads an open dance master class at Dance Gallery Studio.



U-M President Lee Bollinger interviews Adrian Noble, Artistic Director of the Royal Shakespeare Company as part of the RSC's residency in Ann Arbor.

SCHOOL DISTRICTS THAT PARTICIPATED IN THE UMS YOUTH PERFORMANCE SERIES

Ann Arbor	Mosaic Youth Theatre of Detroit
Battle Creek	Munith
Beverly Hills	Pontiac
Brighton	Plymouth-Canton
Carleton	Sachs Theater, Osseo
Chelsea	Redford
Cincinnati, Ohio	Romulus
Dansville	Roseville
Dearborn	Royal Oak
Detroit	Sachs Theater, Osseo
Dexter	Saginaw
Eastpointe	South Lyon
Farmington	Southfield
Grand Rapids	Taylor
Greater Essex, Ontario	Toledo, Ohio
Highland Park	Warren
Jackson	West Bloomfield
Kalamazoo	Whitmore Lake
Lincoln	Ypsilanti
Livonia	Regional Home Schools
Michigan Youth Theatre	Future teachers from
Midland	Concordia College and
Milan	the University of Michigan
Monroe	

PREPS AND MEET-THE-ARTISTS EVENTS

Providing context and understanding about a performance, prior to and just after the performance, is one of UMS' keys for enhancing our audiences' performance experience. Throughout the season nearly 4,000 people attended our PREPs (Performance Related Educational Presentations) and Meet-the-Artists post-performance stage dialogues.

ARTIST RESIDENCIES

This season, UMS developed more groundbreaking interaction with artists, via partnership and collaboration, than ever before. Over 20,000 people participated in University of Michigan mini-courses, symposia, lectures, master classes, and a wide variety of community-developed events. UMS builds partnerships with over seventy community organizations and individuals to help procure, market, and involve a wide variety of learners throughout southeastern Michigan. Of special significance were the multi-faceted residencies of the Liz Lerman Dance Exchange, Gate Theater of Dublin, Royal Shakespeare Company, Moses Hogan Chorale, Alvin Ailey American Dance Theater, and the Ping Chong/Benjamin Bagby collaboration.

EDUCATION AND AUDIENCE
DEVELOPMENT ATTENDEES
BY THE NUMBERS

FAMILY SHOWS

5,218

(four shows)

YOUTH SHOWS

15,624

(eight artists, twelve performances,
129 schools from sixty-eight districts)

TEACHER WORKSHOPS

171

(five workshops)

**MASTER OF ARTS
INTERVIEWS**

2,102

(eight interviews)

PREPS

761

MEET THE ARTISTS

2,850

**COMMUNITY EDUCATION
EVENTS**

(Master Classes, Panels, Distance
Learning, other residency activities)

20,137

TOTALS

46,863 people

EVENTS

186

PARTNER ORGANIZATIONS

for the 2000/2001 Season:

92

2000/2001 PARTNER ORGANIZATIONS

The UMS Education and Audience Development Department also collaborates with over seventy-five local, regional and national organizations including:

Aditi Institute for Fine and
Performing Arts
All City Men's Group
Amazing Audio
Ann Arbor District Library
Ann Arbor Hands-On Museum
Ann Arbor Public Schools
Arab Community Center Economic
and Social Services (ACCESS)
Ardis Renaissance Academy
Arts League of Michigan
Camp Detroit
Cass Technical High School
Chris Engel's Greenhouses
Church of the New Covenant
Clonlara School
Community Foundation of
Southeastern Michigan
Core City Neighborhoods
Cultural Exchange Network
D'Amato's Neighborhood Restaurant
Dance Gallery Studio
Detroit High School for the
Performing Arts
Detroit Liturgical Dance Collective
Detroit Opera House
Detroit Public Library
Detroit Public Schools
Detroit Public Schools Dance Program
Eastern Michigan University
Emerson School Rudolf Steiner School
First Congregational Church
Forsythe Middle School
Friends of Parkside Community Center
Hannan House/Detroit Senior Services
Inner City Dance Scope
Inside/Out Poetry Program
The Jewish Community Center of
Metropolitan Detroit
Kennedy Center: Partners in Education
Marygrove College Dept. of Dance
Matrix Theater Company
Matthaei Botanical Gardens
Michigan Dance Council
Michigan League
Michigan Neighborhood Partnership
Michigan School Band and Orchestra
Association
Mosaic Youth Theater
Mosher-Jordan Residence Hall
Music Hall Center for the
Performing Arts
Pattengill Elementary
Pemajju School of Dance
Performance Network
Pinckney High School
Rudy Hawkins Singers
Scarab Club
St. Clair County Community College
Swing City Dance Studio
U-M Arts at Michigan
U-M Arts of Citizenship
U-M Center for Research on Women
and Gender
U-M Center for Chinese Studies
U-M Center for Latin American and
Caribbean Studies
U-M Center for Russian and Eastern
European Studies
UM Department of English and
Comparative Literature
U-M Dept of Dance
U-M Dept of Musicology
U-M Dept of Theater
U-M Graduate Library, Special
Collections
U-M Institute for the Humanities
U-M International Institute
U-M Jean and Samuel Frankel Center
for Judaic Studies
U-M Museum of Art
U-M Office of the Provost
U-M Residency Halls
U-M Residential College
U-M School of Music
U-M School of Art and Architecture
Union Street Restaurant
University Productions
WEMU Public Radio
WUOM Public Radio
Walk and Squawk Performance Project
Washtenaw Intermediate School District
Waterford Mott High School
Wayne State University Dept. of Dance
Wayne State University Dept. of
Theater
Wayne County Regional Educational
Service Agency
Willis Patterson's Our Own Thing
Chorale
Winans School of the Performing Arts
Wines Elementary
Ypsilanti High School
Ypsilanti/Ann Arbor Ministerial
Alliance
Zingerman's

Membership

Great performances—the best in music, theater and dance—are presented by the University Musical Society because of the generous gifts of UMS supporters (UMS Members). The list below represents names of current UMS Members as of April 4, 2001. If there has been an error or omission, we apologize and would appreciate a call at 734.647.1178 so that we can correct it immediately. UMS would also like to thank those donors who wish to remain anonymous.

SOLOISTS

INDIVIDUALS

Mrs. Gardner Ackley
Hal and Ann Davis
Randall and Mary Pittman

BUSINESSES

Bank One, Michigan
Ford Motor Company Fund
Forest Health Services
Corporation
Office of the Provost,
University of Michigan
Office of the President,
University of Michigan
Pfizer Global Research and
Development; Ann Arbor
Laboratories

FOUNDATIONS

Community Foundation for
Southeastern Michigan
Ford Foundation
JazzNet/Doris Duke Charitable
Foundation
Michigan Council for Arts and
Cultural Affairs
National Endowment for the Arts
The Power Foundation
State of Michigan—Arts, Cultural
and Quality of Life Grant
Program
Wallace-Reader's Digest Funds

MAESTROS

INDIVIDUALS

Carl and Isabelle Brauer
Dr. Kathleen G. Charla
Peter and Jill Corr
Ronnie and Sheila Cresswell
Dr. and Mrs. James Irwin
Charlotte McGeoch
Prudence and Amnon Rosenthal
Herbert Sloan

BUSINESSES

Brauer Investments
Comerica Incorporated
Dow Automotive
KeyBank
Masco Corporation
McKinley Associates
Thomas B. McMullen Company
National City Corporation
Sesi Investment
Visteon

FOUNDATIONS

Detroit Edison Foundation
Elizabeth E. Kennedy Fund
Mid-America Arts
Alliance/Heartland Arts Fund
New England Foundation for
the Arts
Shiffman Foundation Trust
The Texaco Foundation

VIRTUOSI

BUSINESSES

Bank of Ann Arbor
CFI Group

CONCERTMASTERS

INDIVIDUALS

Herb and Carol Amster
Maurice and Linda Binkow
Barbara Everitt Bryant
Douglas D. Crary
Beverley and Gerson Geltner
Charles N. Hall
David and Phyllis Herzig
Keki and Alice Irani
Lawrence and Rebecca Lohr
Robert and Pearson Macek
Ann Meredith
Joe and Karen Koykka O'Neal
Loretta M. Skewes
Dr. Isaac Thomas III &
Dr. Toni Hoover
Susan B. Ullrich
Don and Carol Van Curler
Marina and Robert Whitman

BUSINESSES

Ann Arbor Automotive
AutoCom Associates
Butzel Long Attorneys
Café Marie
Consumers Energy
Elastzell Corp of America

Miller, Canfield, Paddock and
Stone P.L.C.

O'Neal Construction
Pepper Hamilton LLP
Personnel Systems, Inc./Arbor
Technical Staffing
Edward Surovell Realtors

LEADERS

INDIVIDUALS

Bob and Martha Ause
A. J. and Anne Bartoletto
Bradford and Lydia Bates
Kathy Benton and Robert Brown
Raymond and Janet Bernreuter
Joan Akers Binkow
Susan Steiner Bolhouse
Amy and Jim Byrne
Edward and Mary Cady
Edwin and Judith Carlson
David and Pat Clyde
Maurice and Margo Cohen
Tom Cohn
Katharine and Jon Cosovich
Molly and Bill Dobson
Jim and Patsy Donahey
Mr. and Mrs. Thomas C. Evans
John and Esther Floyd
Betty-Ann and Daniel Gilliland
Sue and Carl Gingles
Debbie and Norman Herbert
Thomas and Shirley Kauper
Robert and Gloria Kerry
Marc and Jill Lippman
Judy and Roger Maugh
Paul and Ruth McCracken
Hattie and Ted McOmber
Shirley Neuman
Gilbert Omenn and Martha Darling
John and Dot Reed
Barbara A. Anderson and
John H. Romani
Don and Judy Dow Rumelhart
Carol and Irving Smokler
Lois A. Theis
Don and Carol Van Curler
Richard E. and Laura A. Van House
Mrs. Francis V. Viola III
Marion T. Wirick and James N. Morgan
Paul and Elizabeth Yhouse

BUSINESSES

AAA Michigan
Alf Studios
Arthur Andersen LLP
Blue Nile Restaurant
Dennis A. Dahlmann Inc.
GKN Sintar Metals
Hella North America
Ideation, Inc.
Joseph Curtin Studios

FOUNDATIONS

The Lebensfeld Foundation
THE MOSAIC FOUNDATION
(of R. & P. Heydon)

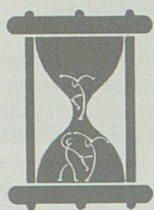
PRINCIPALS

INDIVIDUALS

Dr. and Mrs. Gerald Abrams
Jim and Barbara Adams
Bernard and Raquel Agranoff
Michael Allemang and
Denise Boulange
Lesli and Christopher Ballard
Emily W. Bandera, M.D.
Robert and Wanda Bartlett
Karen and Karl Bartscht
Ralph P. Beebe
Ruth Ann and Stuart J. Bergstein
Philip C. Berry
Suzanne A. and Frederick J. Beutler
Elizabeth and Giles G. Bole
Howard and Margaret Bond
Laurence and Grace Boxer
Helen L. Brokaw
Jeannine and Robert Buchanan
Lawrence and Valerie Bullen
Mr. and Mrs. Richard J. Burstein
Letitia J. Byrd
Betty Byrne
Jim and Priscilla Carlson
Jean and Kenneth Casey
Janet and Bill Cassebaum
Anne Chase
Don and Betts Chisholm
Mr. and Mrs. John Alden Clark
Leon and Heidi Cohan
Mr. Ralph Conger
Anne and Howard Cooper
Elaine Buxbaum Cousins
Mr. Michael and Dr. Joan Crawford

Kathleen J. Crispell and
Thomas S. Porter
Peter and Susan Darrow
Mr. and Mrs. Richard Devos
Jack and Alice Dobson
Elizabeth A. Doman
Mr. and Mrs. John R. Edman
Martin and Rosalie Edwards
Dr. and Mrs. John A. Faulkner
Susan Feagin and John Brown
David and Jo-Anna Featherman
Yi-Tsi M. and Albert Feuerwerker
Ken and Penny Fischer
Ray and Patricia Fitzgerald
Bob and Sally Fleming
James and Anne Ford
Ilene H. Forsyth
Michael and Sara Frank
Otto and Lourdes E. Gago
Marilyn G. Gallatin
James and Cathie Gibson
William and Ruth Gilkey
Dr. Sid Gilman & Dr. Carol Barbour
Alvia G. Golden and
Carroll Smith-Rosenberg
Dr. and Mrs. William A. Gracie
Victoria Green and Matthew Toschlog
Linda and Richard Greene
Frances Greer
John and Helen Griffith
David and Pamela Colburn Haron
Susan Harris
Taraneh and Carl Haske
Thomas and Connie Hefner
Bertram Herzog
Julian and Diane Hoff
Janet Woods Hoobler
Robert M. and Joan F. Howe
Sun-Chien and Betty Hsiao
John and Patricia Huntington
Stuart and Maureen Isaac
Lennart and Karin Johansson
Elizabeth Judson Johnson
Robert L. and Beatrice H. Kahn
Richard and Sylvia Kaufman
Dorian R. Kim
Jim and Carolyn Knake
Amy Sheon and Marvin Krislov
Bud and Justine Kulka
Barbara and Michael Kusisto
Lee Lamont
Jill M. Latta and David S. Bach
Leo and Kathy Legatski
Evie and Allen Lichter
Carolyn and Paul Lichter
Dean and Gwen Louis
John and Cheryl MacKrell
Marilyn Mason

MICHAEL LEE AND OPUS MIME PRESENT



Through Time

Michael Lee and OPUS Mime present *Through Time*, a full-length mime concert, featuring the title piece, a poetic look at a world without time structures ... where pages of history books are ripped out and cast to the wind. Chapters reassemble and Nixon meets Hitler ... The French Revolution hosts the Olympics ...

THE PAST AND THE FUTURE DANCE!

May 31 – June 2, 8:00 p.m.

June 3, 2:00 p.m.

Performance Network

120 East Huron, Ann Arbor

General Admission \$15

Students and Seniors \$12

Pay-what-you-can Thursday

For tickets, call 734.663.0681

Natalie Matovinovic
 Margaret W. Maurer
 Joseph McCune and Georgiana Sanders
 Rebecca McGowan and
 Michael B. Staebler
 Andy and Candice Mitchell
 Lester and Jeanne Monts
 Grant W. Moore
 Julia S. Morris
 Eva L. Mueller
 M. Haskell and Jan Barney Newman
 William and Deanna Newman
 Dr. and Mrs. Frederick C. O'Dell
 Dr. and Mrs. William J. Oliver
 Mark and Susan Orringer
 Elizabeth C. Overberger
 Mrs. William B. Palmer
 William C. Parkinson
 Dory and John D. Paul
 John M. Paulson
 Maxine Pierpont
 Eleanor and Peter Pollack
 Stephen and Agnes Reading
 Donald H. Regan and Elizabeth Axelson
 John and Marilyn Rintamaki
 Kenneth J. Robinson
 Mrs. Irving Rose
 Victor Strecher and Jeri Rosenberg
 Gustave and Jacqueline Rosseels
 Dr. Nathaniel H. Rowe
 Maria and Rusty Restuccia
 Alan and Swanna Salties
 Maya Savarino
 Mrs. Richard C. Schneider
 Rosalie and David Schottenfeld
 Steven R. and Jennifer L. Schwartz
 Patricia and Joseph Settini
 Janet and Michael Shatusky
 Helen and George Siedel
 J. Barry and Barbara M. Sloat
 Tim Sparling and Lynne Tobin
 Steve and Cynny Spencer
 Gus and Andrea Stager
 James and Nancy Stanley
 Lloyd and Ted St. Antoine
 Mrs. Ralph L. Steffek
 Mr. and Mrs. John C. Stegeman
 Victor and Marlene Stoeffler
 James L. and Ann S. Telfer
 Bryan and Suzette Ungard
 Jerrold G. Utsler
 Mary Vanden Belt
 Elly Wagner
 John Wagner
 Barry and Sybil Wayburn
 Willes and Kathleen Weber
 Robert O. and Darragh H. Weisman
 Roy and JoAn Wetzel
 Max Wicha and Sheila Crowley

Dr. and Mrs. Clyde Wu
 Ed and Signe Young
 Gerald B. and Mary Kay Zelenock
 Nancy and Martin Zimmerman

BUSINESSES

Alcan Global Automotive Group
 The Bartech Group, Inc.
 Charles Reinhart Company Realtors
 Republic Bank Ann Arbor
 TI Group Automotive Systems

FOUNDATIONS

Ann Arbor Area Community Foundation
 Kaufman Foundation
 Key Foundation
 Montague Foundation
 The Power Foundation
 Sarns Ann Arbor Fund
 Vibrant of Ann Arbor

BENEFACTORS

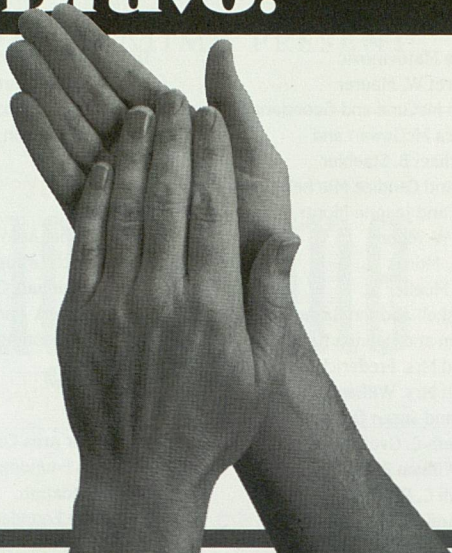
INDIVIDUALS

Robert Ainsworth
 Dr. and Mrs. Robert G. Aldrich
 Michael and Suzan Alexander
 Dr. and Mrs. Rudi Ansbacher
 Elaine and Ralph Anthony
 Janet and Arnold Aronoff
 Max K. Aupperle
 Gary and Cheryl Balint
 Norman E. Barnett
 Mason and Helen Barr
 Mr. and Mrs. John C. Beatty
 Astrid B. Beck and David Noel Freedman
 L. S. Berlin
 Tom and Cathie Bloem
 Ron and Mimi Bogdasarian
 Charles and Linda Borgsdorf
 Dale and Nancy Briggs
 David and Sharon Brooks
 June and Donald R. Brown
 Virginia Sory Brown
 H. D. Cameron
 Jean W. Campbell
 Michael and Patricia Campbell
 Bruce and Jean Carlson
 Jack and Wendy Carman
 James S. Chen
 Janice A. Clark
 Edward J. and Anne M. Comeau
 Carolyn and L. Thomas Conlin
 Jim and Connie Cook
 Hugh and Elly Rose Cooper
 Susan and Arnold Coran
 Paul N. Courant and Marta A. Manildi

Malcolm and Juanita Cox
 Clifford and Laura Craig
 Alice B. Crawford
 George and Connie Cress
 Jean Cunningham and Fawwaz Ulaby
 Mary R. and John G. Curtis
 Roderick and Mary Ann Daane
 Julie and Jonathan Dean
 Pauline and Jay J. De Lay
 Ellwood and Michele Derr
 Lloyd and Genie Dethloff
 Della DiPietro and Jack Wagoner, M.D.
 Steve and Lori Director
 Al Dodds
 Mr. and Mrs. Raymond D. Dornbusch
 Charles and Julia Eisendrath
 Dr. Alan S. Eiser
 Kathryn A. Eklund
 Stefan S. and Ruth S. Fajans
 Dr. and Mrs. S.M. Farhat
 Claudine Farrand and Daniel Moerman
 Sidney and Jean Fine
 Clare M. Fingerle
 Mr. and Mrs. George W. Ford
 Phyllis W. Foster
 Deborah and Ronald Freedman
 Gwyn and Jay Gardner
 Drs. Steve Geiringer and Karen Bantel
 Thomas and Barbara Gelehrter
 Charles and Rita Gelman
 Beverly Gershowitz
 Joyce and Fred Glensberg
 Paul and Anne Glendon
 Cozette Grabb
 Elizabeth Needham Graham
 William and Deborah Gray
 Dr. and Mrs. Lazar J. Greenfield
 Leslie and Mary Ellen Guinn
 Carl E. and Julia H. Guldberg
 Don P. Haefner and Cynthia J. Stewart
 Helen C. Hall
 Mr. and Mrs. Elmer F. Hamel
 Walter and Diane Harrison
 Paul Hysen and Jeanne Harrison
 Jeannine and Gary Hayden
 Mrs. W.A. Hiltner
 Mr. and Mrs. William B. Holmes
 David and Dolores Humes
 Ronald R. and Gaye H. Humphrey
 Eileen and Saul Hymans
 Wallie and Janet Jeffries
 Jim and Dale Jerome
 Ellen C. Johnson
 Frank and Sharon Johnson
 Tim and Jo Wiese Johnson
 Susan and Stevo Julius
 Steven R. Kalt and Robert D. Heeren
 Mercy and Stephen Kasle
 John B. and Joanne Kennard
 David and Sally Kennedy
 Richard Kennedy
 Emily and Ted Kennedy

Bravo! Bravo!

The
Charles Reinhart Company
applauds the
Ford Honors Program



Reinhart

Charles Reinhart Co. Realtors



*In Tune With
the Local Heartbeat*

 **Bank OF ANN ARBOR**

Downtown Ann Arbor

Traver Village Shopping Center • Downtown Ypsilanti

www.bankofannarbor.com

(734)662-1600

Member
FDIC



Dick and Pat King
 Hermine R. Klingler
 Philip and Kathryn Klintworth
 Joseph and Marilyn Kokoszka
 Samuel and Marilyn Krimm
 Lee and Teddi Landes
 Mr. John K. Lawrence
 Ted and Wendy Lawrence
 Laurie and Robert LaZebnik
 Jacqueline H. Lewis
 Leslie and Susan Loomans
 Charles and Judy Lucas
 John and Jane Lum
 Brigitte and Paul Maassen
 Edwin and Catherine Marcus
 Claude and Marie Martin
 Sally and Bill Martin
 Chandler and Mary Matthews
 Griff and Pat McDonald
 Eileen McIntosh and
 Charles Schaldenbrand
 Walter and Ruth Metzger
 Leo and Sally Miedler
 Myrna and Newell Miller
 Melinda and Bob Morris
 Brian and Jacqueline Morton
 Cyril and Rona Moscow
 Martin Neuliep and Patricia Pancioli
 Len and Nancy Niehoff
 Mrs. Marvin Niehuss
 Gene Nissen
 Marylen and Harold Oberman
 Mr. and Mrs. James C. O'Neill
 Mitchel Osman, M.D.
 Shirley and Ara Paul
 Lorraine B. Phillips
 Elaine and Bertram Pitt
 Stephen and Bettina Pollock
 Richard H. and Mary B. Price
 Mrs. Gardner C. Quarton
 Mrs. Joseph S. Radom
 Jeanne Raisler and Jonathan Allen Cohn
 Jim and Ieva Rasmussen
 Jim and Bonnie Reece
 Rudolph and Sue Reichert
 Ray and Ginny Reilly
 Art Rose and Nancy Moran
 Dr. Susan M. Rose
 Mrs. Doris E. Rowan
 Carol Rugg and Richard Montmorency
 Ina and Terry Sandalow
 Drs. Edward and Virginia Sayles
 Peter C. Schaberg and Norma J. Amrhein
 Meeyung and Charles Schmitter
 Sue Schroeder
 Dr. John J. H. Schwarz
 Julianne and Michael Shea
 Howard and Aliza Shevrin
 Dr. and Mrs. Martin Shinedling
 Frances U. and Scott K. Simonds
 Kate and Philip Soper
 Mr. and Mrs. Neil J. Sosin

Juanita and Joseph Spallina
 David and Ann Staiger
 Ron and Kay Stefanski
 Stephen and Gayle Stewart
 Wolfgang Stolper
 Nancy Bielby Sudia
 Charlotte B. Sundelson
 Ronna and Kent Talcott
 Bob and Betsy Teeter
 Mrs. E. Thurston Thieme
 Christina and Thomas Thoburn
 Dr. and Mrs. Merlin C. Townley
 Joan Lowenstein and Jonathan Trobe
 Marilyn Tsao and Steve Gao
 Dr. Sheryl S. Ulin and
 Dr. Lynn T. Schachinger
 Charlotte Van Curler
 Jack and Marilyn van der Velde
 William C. Vassell
 Kate and Chris Vaughan
 Florence S. Wagner
 Charles R. and Barbara H. Wallgren
 Joyce L. Watson
 Robin and Harvey Wax
 Karl and Karen Weick
 Raoul Weisman and Ann Friedman
 Angela and Lyndon Welch
 Dr. Steven W. Werns
 Harry C. White and Esther R. Redmount
 J. D. and Joyce Woods
 Mr. and Mrs. A. C. Wooll
 David and April Wright
 Don and Charlotte Wyche

BUSINESSES

Bellanina Day Spa
 Clark Professional Pharmacy
 Dupuis & Ryden CPAs and Business
 Advisors
 Galamp Corporation
 Guardian Industries Corporation
 Lewis Jewelers
 Malloy Lithographing Inc.
 Pollack Design Associates

FOUNDATIONS

The Sneed Foundation, Inc.

ASSOCIATES

INDIVIDUALS

Michael and Marilyn Agin
 Dr. Diane M. Agresta
 Anastasios Alexiou
 Christine Webb Alvey
 Dr. and Mrs. David G. Anderson
 David and Katie Andrea
 Harlene and Henry Appelman

Patricia and Bruce Arden
 Mr. and Mrs. Arthur J. Ashe, III
 Dwight Ashley
 Dan and Monica Atkins
 Jonathan and Marlene Ayers
 Robert L. Baird
 Laurence R. and Barbara K. Baker
 John R. Bareham
 Cy and Anne Barnes
 Lois and David Baru
 Gary Beckman and Karla Taylor
 Sriramohan S. and Shamal Beltangady
 Harry and Betty Benford
 Erling and Merete Blondal Bengtsson
 Linda and Ronald Benson
 Sheldon and Barbara Berry
 Dan and Irene Biber
 John Blankley and Maureen Foley
 Jane M. Bloom
 Jim Botsford and Janice Stevens Botsford
 Dean Paul C. Boylan
 Dr. and Mrs. C. Paul Bradley
 Morton B. and Raya Brown
 Sue and Noel Buckner
 Trudy and Jonathan Bulkley
 Bob Caldwell and Terry Hirth Caldwell
 Margot Campos
 Charles F. Cannell
 Nancy Cantor
 Marshall F. and Janice L. Carr
 Jeannette and Robert Carr
 Carolyn M. Carty and Thomas H. Haug
 Dr. and Mrs. Joseph C. Cerny
 Tsun and Siu Ying Chang
 Kwang and Soon Cho
 Dr. Kyung and Young Cho
 Robert J. Cierzniwski
 Donald and Astrid Cleveland
 Hubert and Ellen Cohen
 Nan and Bill Conlin
 Mary Cordes and Charleen Price
 Merle and Mary Ann Crawford
 Mr. Michael J. and Dr. Joan Crawford
 Constance Crump and Jay Simrod
 Peggy Cudkowicz
 Sunil and Merial Das
 Charles and Kathleen Davenport
 Ed and Ellie Davidson
 Peter and Norma Davis
 Ronald and Dolores Dawson
 John and Jean Debbink
 Penny and Larry Deitch
 Elena and Nicholas Delbanco
 Elizabeth Dexter
 Martha and Ron DiCecco
 Macdonald and Carolin Dick
 Bill and Peggy Dixon
 Jean Dolega
 Heather and Stuart Dombey
 Dr. and Mrs. Edward F. Domino
 Thomas and Esther Donahue
 Phillip Duryea
 Elizabeth Edmond MD
 Judge and Mrs. S. J. Elden
 Ethel and Sheldon Ellis
 Mackenzie and Marcia Endo
 Joan and Emil Engel
 Patricia Enns
 Dr. John W. Farah

**best selection, best service
anywhere!**



\$2.00 OFF

CASSETTES, COMPACT DISCS & DVDs

Present This Coupon at any **HARMONY HOUSE** location, and receive **\$2 OFF** any REGULARLY PRICED CD, DVD or Cassette (\$10.99 or More). No Limit. Void With Other Offers. Excludes Special Orders.

This Coupon Must be Presented to Receive Discount. Coupon good in store only.

EXPIRES June 11, 2001

UM MUS SOCIETY



HARMONY HOUSE

www.harmonyhouse.com

ANN ARBOR • 306 S. State St. (S. of Liberty) 734-332-7800

May We Seat You?

- Audi • Honda
- Porsche • Volkswagen

*Voted Best Car Dealership
Five Years In A Row
(97-01) by readers of
Current Magazine.*

(734) 761-3200

www.howardcooper.com

**HOWARD
COOPER**

• Import Center •

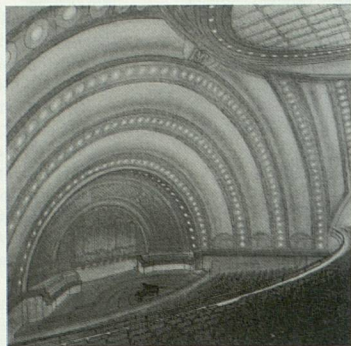
- Dede and Oscar Feldman
Dr. and Mrs. James Ferrara
Karl and Sara Fiengenschuh
Dr. James F. Filgas
Carol Finerman
Herschel and Annette Fink
Beth B. Fischer (Mrs. G. J.)
Dr. C. Peter and
Beverly A. Fischer
Jennifer and Guillermo Flores
Ernest and Margot Fontheim
Howard and Margaret Fox
Betsy Foxman and
Michael Boehnke
Lela J. Fuester
Mr. and Mrs. William Fulton
Harriet and Daniel Fusfeld
Bernard and Enid Galler
Eugene and Mary Anne Gargaro
Professor and Mrs. David Gates
Wood and Rosemary Geist
Beth Genne and Allan Gibbard
Elmer G. Gilbert and
Lois M. Verbrugge
Mr. and Mrs. Michael Gillis
James and Janet Gilsdorf
Maureen and David Ginsburg
Albert and Almeda Girod
Edward and Ellen Goldberg
Irwin Goldstein and
Martha Mayo
James W. and Marla J. Gousseff
Maryanna and
Dr. William H. Graves, III
Dr. John and Renee M. Greden
Mrs. Clara Green
Lila and Bob Green
Bill and Louise Gregory
Raymond and Daphne M. Grew
Lauretta and Jim Gribble
Carleton and Mary Lou Griffin
Mark and Susan Griffin
Werner H. Grillk
David and Kay Gugala
Ken and Margaret Guire
Arthur W. Gulick, M.D.
Lorraine Gutierrez and
Robert Peyser
Susan and John Halloran
Yoshiko Hamano
Mr. and Mrs. Michael Hanna
Martin D. and Connie D. Harris
Robert and Sonia Harris
Robert and Jean Harris
Susan S. Harris
Naomi Gottlieb Harrison and
Theodore Harrison DDS
Clifford and Alice Hart
Bob and Lucia Heindold
J. Lawrence and
Jacqueline Stearns Henkel
Fred and Joyce Hershenson
Lorna and Mark Hildebrandt
Frances C. Hoffman
Matthew C. Hoffman and
Kerry McNulty
Carol and Dieter Hohnke
Dr. Ronald and Ann Holz
Jane H. Hughes
Dr. and Mrs. Ralph M. Hulett
Ann D. Hungerman
Hazel Hunsche
Thomas and Kathryn Huntzicker
Susan and Martin Hurwitz
Robert B. Ingling
Margaret and Eugene Ingram
Harold and Jean Jacobson
Kent and Mary Johnson
Douglas and Mary Kahn
Dr. and Mrs. Mark S. Kaminski
George Kaplan and Mary Haan
Frank and Patricia Kennedy
Donald F. and Mary A. Kiel
Howard King and
Elizabeth Sayre-King
Tom and Connie Kinnear
Rhea Kish
James and Jane Kister
Dr. David E. and
Heidi Castleman Klein
Shira and Steve Klein
Laura Klem
Anne Kloack
Thomas and Ruth Knoll
Dr. and Mrs. Melvyn Korobkin
Michael and Phyllis Korybalski
Dimitri and Suzanne Kosacheff
Ron and Barbara Kramer
Bert and Geraldine Kruse
Bert and Catherine La Du
Mr. and Mrs. Henry M. Lapeza
Neal and Anne Laurance
John and Theresa Lee
Peter Lee and Clara Hwang
Mr. and Mrs. Fernando S. Leon
Richard LeSueur
Myron and Bobbie Levine
Donald J. and
Carolyn Dana Lewis
Mark Lindley and Sandy Talbott
Rod and Robin Little
Vi-Cheng and Hsi-Yen Liu
Naomi E. Lohr
E. Daniel and Kay Long
Armando Lopez Rosas
Richard and Stephanie Lord
Virginia and Eric Lundquist
Mr. and Mrs. Carl J. Lutkehaus
Edward and Barbara Lynn
Pamela J. MacKintosh
Virginia Mahle
Deborah Malamud and
Neal Plotkin
Melvin and Jean Manis
Marcovitz Family
Nancy and Philip Margolis
Sheldon and Geraldine Markel
Peter Marshall
Jeffrey M. Mason
Jim and Ann Mattson
Margaret E. McCarthy
Ernest and Adele McCarus
W. Bruce McCuaig
Michael G. McGuire
Mr. and Mrs. Ernest Merlanti
Bernice and Herman Merte
Henry D. Messer - Carl A. House
Deanna Relyea and
Piotr Michalowski
Jeanette and Jack Miller
John Mills
Thomas and Doris Miree
James and Kathleen Mitchiner
William G. and
Edith O. Moller, Jr.
Jane and Kenneth Moriarty
Frederick C. Neidhardt and
Germaine Chipault
Laura Nitzberg and Thomas Carl
Donna Parmelee and
William Nolting
Constance L. and David W. Osler
Marysia Ostafin and
George Smillie
David and Andrea Page
Helen I. Panchuk
William and Hedda Panzer
Penny and Steve Papadopoulos
Rene and Hino Papo
Elizabeth Payne
Zoe and Joe Pearson
Margaret and Jack Petersen
Mrs. Daniel M. Phillips
Wayne Pickvet and Bruce Barret
William and Barbara Pierce
Frank and Sharon Pignanelli
Richard and Meryl Place
Donald and Evonne Plantinga
Bill and Diana Pratt
Jerry and Lorna Prescott
Larry and Ann Preuss
Wallace G. and Barbara Prince
Tom and Mary Princing
J. Thomas and Kathleen Pustell
Leland and
Elizabeth Quackenbush
Patricia Randle and James Eng
Anthony L. Reffells and
Elaine A. Bennett
Glenda Renwick
Janet L. Repp
Molly Resnik and John Martin
Betty Richart
Constance O. Rinehart
Jay and Machree Robinson
W. Robin Rose
Robert and Joan Rosenblum
Gay and George Rosenwald
Craig and Jan Ruff
Bryant and Anne Russell
Michael and Kimm Sarosi
Christi and Mike Savitski
Gary and Arlene Saxonhouse
Albert J. and Jane L. Sayed
David and Marcia Schmidt
Monica and
David E. Scheingart
Suzanne Selig
Harriet Selin
Erik and Carol Serr
Ruth and Jay Shanberge
Lorraine M. Sheppard
Ned Shure and Jan Onder
John and Arlene Shy
Scott and Joan Singer
John and Anne Griffin Sloan
Tim and Marie Slottow
Mr. and Mrs. William B. Slowey
Alene M. Smith
Carl and Jari Smith
Mrs. Robert W. Smith
Susan M. Smith
Cynthia J. Sorensen
Yoram and Eliana Sorokin
Tom Sparks
Jeffrey D. Spindler
Allen and Mary Spivey
Curt and Gus Stager
Barbara Stark-Nemon and
Barry Nemon
Virginia and Eric Stein
Professor Louis and
Glennis Stout
Dr. and Mrs. Stanley Strasius
Brian and Lee Talbot
Eva and Sam Taylor
Dr. Paul and Jane Thielking
Mary H. Thieme
Catherine Thoburn
Edwin J. Thomas
Bette M. Thompson
Paul and Freda Unangst
Joyce A. Urba and
David J. Kinsella
Dr. and Mrs. Samuel C. Ursu
Jim and Emilie Van Bochove
Kathleen and Edward Van Dam
Hugo and Karla Vandersypen
Tanja and Rob Van der Voo
Carolyn and Jerry Voight
Wendy L. Wahl and
William R. Lee
Mrs. Norman Wait
Robert D. and Liina M. Wallin
Dr. and Mrs. Jon M. Wardner
Carol Weber
Deborah Webster and
George Miller
Susan and Peter Westerman
Marcy and Scott Westerman
Iris and Fred Whitehouse
Ann and Clayton Wilhite
Brymer Williams
Reverend Francis E. Williams
Christine and Park Willis
Thomas and Iva Wilson
Beverly and Hadley Wine
Charles Witke and
Aileen Gatten
Charlotte A. Wolfe
Kathy and Alan Wright
Sandra and Jonathan Yobbagy
MaryGrace and Tom York

BUSINESSES

- Atlas Tool, Inc.
Bodywise Therapeutic Massage
Coffee Express Co.
Edwards Brothers, Inc.
Garris, Garris, Garris & Garris
Law Office
Palladium Associates
Scientific Brake and Equipment
Company

SITE OF 88 YEARS OF UMS PERFORMING ARTS EXPERIENCES

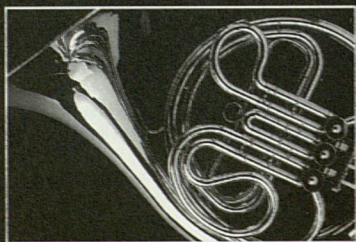
*celebrating the renewal
of historic Hill Auditorium*



QUINN EVANS | ARCHITECTS

Ann Arbor www.quinnevans.com Washington, DC

CONGRATULATIONS TO THE UNIVERSITY OF MICHIGAN!



*In real estate as in music,
performance is everything.*

EDWARD
SUROVELL
REALTORS

Ann Arbor • Adrian • Chelsea • Jackson • Saline • Tecumseh

surovellrealtors.com

ADVOCATES

INDIVIDUALS

- Judith Abrams
John R. Adams
Tim and Leah Adams
Dr. Dorit Adler
Thomas Aigler
Michael and Hiroko Akiyama
Ronald Albucher and Kevin Pfau
Gordon and Carol Allardyce
James and Catherine Allen
Pamela and Gordon Amidon
Mayank M. Amin
Helen and David Aminoff
Dr. and Mrs. Charles T. Anderson
Sandra and David Anderson
Joseph and Annette Anderson
Martha Andrews-Schmidt
Mary C. Arbour
Catherine S. Arcure
H. C. and Doris Arms
Bert and Pat Armstrong
Jeff and Deborah Ash
Eric M. and Nancy Aupperle
John and Rosemary Austgen
Erik and Linda Lee Austin
Shirley and Donald Axon
Virginia and Jerald Bachman
Drs. John and Lillian Back
Linda Bennett and Bob Bagramian
Prof. and Mrs. J. Albert Bailey
Richard W. Bailey and
Julia Huttar Bailey
Barbara and Daniel Balbach
Helena and Richard Balon
Peter and Paulett Banks
David and Monika Barera
Joan W. Barth
Robert and Carolyn Bartle
Leslie and Anita Bassett
Frank and Lindsay Bateman
Mrs. Jere M. Bauer
James and Margaret Bean
Kathleen Beck
Mr. and Mrs. Steven R. Beckert
Robert Beckley and Judy Dinesen
Mr. and Mrs. Bruce Beier
Patrick and Maureen Belden
Steve and Judy Bemis
Walter and Antje Benenson
Bruce Benner and
Hely Merle-Benner
Joan and Rodney Bentz
Mr. and Mrs. Ib Bentzen-Bilkvist
Dr. Rosemary R. Berardi
Barbara Levin Bergman
Jim Bergman and Penny Hommel
Susan A. Bernard
Steven Bernstein
Michel and Dominique Berry
Gene and Kay Berrodin
Mark Bertz
Naren and Nishta Bhatia
Eric and Doris Billes
Jack Billie and Sheryl Hirsch
Sara Billmann and Jeffrey Kuras
William and Ilene Birge
Elizabeth S. Bishop
Martin and Mary Black
Barbara O. Black
Tom and Amy Blair
Donald and Roberta Blitz
Fran and Joy Blouin
Dr. George and Joyce Blum
Beverly J. Bole
Dr. and Mrs. Frank P. Bongiorno
Lola J. Borchardt
Morris and Reva Bornstein
Jeanne and David Bostian
Victoria C. Botek and
William M. Edwards
Bob and Jan Bower
Marvin J. and Maureen A. Boyle
Dr. and Mrs. Ralph Bozell
Stacy P. Brackens
Enoch and Liz Brater
Mr. Joel Bregman and
Ms. Elaine Pomeranz
Mr. and Mrs. Gerald Bright
Paul A. Bringer
Clifford and Amy Broman
Razelle Brooks
Olin and Aleeta Browder
Cindy Browne
Mrs. Webster Brumbaugh
Phil Bucksbaum and
Roberta Morris
Dr. Frances E. Bull
Margaret E. Bunge
Marilyn Burhop
Tony and Jane Burton
Barbara H. Busch
Joanne Cage
Barbara and Albert Cain
Louis and Janet Callaway
Susan and Oliver Cameron
Jenny P. Campbell
James H. Campbell
Valerie and Brent Carey
George R. Carignan
Barbara Carpenter
Deborah S. Carr
James and Mary Lou Carras
Dennis B. and Margaret W. Carroll
Dean Carter and
Dr. Petra Schindler Carter
Joseph and Nancy Cavanaugh
K. M. Chan
J. Wehrey and Patricia Chapman
Dr. Carey Charles-Angelos
Barry and Marjorie Checkoway
Felix and Ann Chow
Catherine Christen
Edward and Rebecca Chudacoff
Sallie R. Churchill
Nancy Cillely
Pat Clapper
Brian and Cheryl Clarkson
Jill Kronheim Cohen
Hilary and Michael Cohen
Willis Colburn and Denise Park
Marion T. Collier
John and Penelope Collins
Wayne and Melinda Colquitt
Gordon and Marjorie Comfort
Wendy and Mark Comstock
Philip and Jean Converse
Lolagene C. Coombs
Dr. William W. Coon
Kathleen Cooney and
Gary Faerber
Gage R. Cooper
Dr. and Mrs. Richard Cooper
Garnet and Joan Cousins
Marjorie A. Cramer
Richard and Penelope Crawford
Mr. and Mrs. Winton L. Crawford
Charles and Susan Cremin
Mary C. Crichton
Mr. and Mrs. James I. Crump
Richard J. Cunningham
Marcia A. Dalbey
Marylee Dalton
Mr. and Mrs. Norman Dancy
Mildred and William B. Darrnton
Ruth E. Datz
Mr. and Mrs. John L. Dauer
Mr. and Mrs. Arthur W. Davidge
Judi and Ed Davidson
Laning R. Davidson, M.D.
Mark and Jane Davis
Wayne and Patricia Davis
Robert and
Barbara Ream Debrodt
Joe and Nan Decker
Dr. and Mrs. Raymond F. Decker
George and Margaret DeMuth
Pamela DeTullio and
Stephen Wiseman
Don and Pam Devine
Sheryl Diamond
Lorenzo DiCarlo and
Sally Stegeman DiCarlo
Ruth J. Doane
Judy and Steve Dobson
Rev. Dr. Timothy J. Dombrowski
Steven and Paula Donn
R. Paul Drake and Joyce E. Penner
Roland and Diane Drayson
John Dryden and Diana Raimi
Gulshirin Dubash and
Jeremy Mistry
Mary P. Dubois
Rosanne and Sandy Duncan
Mary H. Dunham
Connie Dunlap
Jean and Russell Dunnaback
Edmund and Mary Durfee
John W. Durstine
Dr. and Mrs. Theodore E. Dushane
Linda Edberg
Richard and Myrna Edgar
Morgan H. and Sara O. Edwards
Julie and Charles Ellis
James Ellis and Jean Lawton
H. Michael and Judith L. Endres
Mr. and Mrs. Fred A. Erb/
Erb Foundation
Roger E. Erickson
Steve and Pamela Ernst
Leonard and Madeline Eron
Dorothy and Donald Eschman
Barbara Evans
Don and Jeanette Faber
Mr. and Mrs. Robert B. Fair, Jr.
Elly and Harvey Falit
Dr. Cheryl C. Farmer
Mike and Bonnie Fauman
Inka and David Felbeck
Phil and Phyllis Fellin
Ronda and Ron Ferber
Susan Filipiak/Swing City Dance
Studio
Gerald B. and Catherine L. Fischer
Dr. and Mrs. Richard L. Fisher
Susan R. Fisher and
John W. Waidley
Barbara and James Fitzgerald
Beth and Joe Fitzsimmons
Rochelle Flumenbaum and
Paul Estenson
Jessica Fogel and
Lawrence Weiner
Scott and Janet Fogler
George and Kathryn Foltz
Susan Goldsmith and
Spencer Ford
Burke and Carol Fossee
Jason I. Fox
William and Beatrice Fox
Dan and Jill Francis
Larry and Nancy Frank
Lynn A. Freeland
Richard and Joann Freethy
Sophia L. French
Marilyn L. Friedman
Esther and Peretz Friedmann
Jerry Frost
Frances and Robert Gamble
Jack J. and Helen Garris
C. Louise Garrison
Janet and Charles Garvin
Chuck and Rita Gelman
Ms. Jutta Gerber
Michael and Ina Hanel-Gerdenich
Deborah and Henry Gerst
Michael Gerstenberger
W. Scott Gerstenberger and
Elizabeth A. Sweet
Leo and Renate Gerulaitis
Paul and Suzanne Gikas
Matthew and Debra Gildea
Dr. and Mrs. Gary Gillespie
Zita and Wayne Gillis
Beverly Jeanne Giltrow
Albert and Barbara Glover
Robert Gockel
Albert L. Goldberg
Joyce and Janice Golding
Ed and Mona Goldman
Dr. and Mrs. Michael J. Goldstein
Beryl and David Goldsweig
Mitch and Barb Goodkin
Ann F. Goodman
Selma and Albert Gorlin
Enid M. Gosling
Michael L. Gowing
Mr. and Mrs. Gordon J. Graham
Mr. and Mrs. Robert C. Graham
Helen M. Graves
Pearl E. Graves
Jerry M. and Mary K. Gray
Larry and Martha Gray
Whitmore and Svea Gray
Ivan Green
Lewis R. and Mary A. Green
Phyllis Green

- Sandra Gregerman
G. Robinson and Ann Gregory
Linda and Roger Grekin
Marguerite M. Gritenas
Laurie Gross
Frederick and Iris Gruhl
Lionel and Carol Guregian
Margaret Gutowski and
Michael Marletta
Dr. Merle Haanes
Caroline and Roger Hackett
Claribel Halstead
Margo Halsted
Sarah I. Hamcke
David Hamilton
Barbara H. Hammitt (Mrs. F.G.)
Carl T. and Judith M. Hanks
Grace H. Hannenin
Lourdes S. Bastos Hansen
Charlotte Hanson
Mary C. Harms
Stephen G. and Mary Anna Harper
Laurelynnne and George Harris
Ed Sarath and Joan Harris
Anne Haugh
Ian and Barbara Hawkins
Maureen Hawley
Anne Heacock
Kenneth and Jeanne Heiningner
Jim and Esther Heitler
Bill Helfer
Sivana Heller
Paula B. Hencken and
George C. Collins
Karl Henkel and Phyllis Mann
Dr. and Mrs. Keith S. Henley
Kathy and Rudi Hentschel
Jeanne Hernandez
C.C. Herrington, M.D.
Ronald D. and Barbara J. Hertz
Herb and Dee Hildebrandt
Larry and Carolyn Hiss
James and Ann Marie Hitchcock
Louise Hodgson
Robert and Claire Hogikyan
Donna M. Hollowell
Mrs. Howard Holmes
Pam and Steve Horne
Dave and Susan Horvath
Mr. and Mrs. F. B. House
James and Wendy Fisher House
Jeffrey and Allison Housner
G. C. Housworth
Helga and Jerry Hover
John I. Hritz, Jr.
Mrs. V. C. Hubbs
Jude and Ray Huetteman
Harry and Ruth Huff
Mr. and Mrs. William Hufford
Joanne Winkleman Hulce
Jewel F. Hunter
Marilyn C. Hunting
Diane C. Imredy
Edward C. Ingraham
Perry Irish
Sid and Harriet Israel
Joan L. and John H. Jackson
Mel and Myra Jacobs
Dean and Leslie Jarrett
Marilyn G. Jeffs
- Professor and Mrs. Jerome Jelinek
Ken and Marcia Jenkinson
Paula J. Jester
Mark and Linda Johnson
Paul and Olga Johnson
Marilyn S. Jones, PH.D.
Stephen Josephson and Sally Fink
Andree Joyaux and Fred Blanck
William and Ellen Kahn
Mary Kalmes and Larry Friedman
Carol Kamm and James Howe
Paul Kantor and
Virginia Weckstrom Kantor
Mr. and Mrs. Irving Kao
Mr. and Mrs. Wilfred Kaplan
Carol and H. Peter Kappus
Diana Karam
Alex and Phyllis Kato
Ann F. Katz
Deborah and Ralph Katz
Dennis and Linda Kayes
Julie and Phil Kearney
Mr. and Mrs. Robert Keiser
Janice Keller
Linda Atkins and Thomas Kenney
George L. Kenyon and
Lucy A. Waskell
David J. and JoAnn Z. Keosaian
Nancy Koppelman and
Michael Smerza
Paul and Leah Kileny
Jeanne M. Kin
Robert and Vicki Kiningham
John and Carolyn Kirkendall
Diane Kirkpatrick
Leilani and Steven Kitler
Rosalie and Ron Koenig
Michael J. Kondziolka
Charles and Linda Koopmann
Alan and Sandra Kortesoja
Mr. and Mrs. Richard Krachenberg
Sara Kring
William G. Kring
Alan and Jean Krich
Symba and Phil Kroll
Helen and Arnold Kueth
Danielle and George Kuper
Alvin and Lia Kushner
Dr. and Mrs. Richard A. Kutcipal
Tim and Kathy Laing
Mr. and Mrs. Seymour Lampert
Pamela and Stephen Landau
Janet Landsberg
Patricia M. Lang
Mrs. David A. Lanius
Lois H. Largo
Joan Larsen and Adam Pritchard
Carl F. and Ann L. LaRue
Beth and George LaVoie
Judith and Jerold Lax
Chuck and Linda Leahy
Cyril and Ruth Leder
Fred and Ethel Lee
Skip and Mary LeFauve
Diane Lehman and Jeffrey Lehman
Richard and Barbara Leite
Ron and Leona Leonard
Sue Leong
Margaret E. Leslie
David E. Levine
- Harry and Melissa LeVine
George and Linda Levy
Tom and Judy Lewis
Ken and Jane Lieberthal
Leons and Vija Liepa
Margaret K. Liu and
Diarmaid M. O'Foighil
Dr. and Mrs. F. A. Locke
Julie M. Loftin
Jane Lombard
Ronald Longhofer and
Norma McKenna
Bruce Loughry
Christopher Loving
Lynn Luckenbach
Walter Allen Maddox
Mark Mahlberg
Suzanne and Jay Mahler
Alan and Carla Mandel
Pearl Manning
Alice K. and Robert G. Marks
Rhoda and William Martel
Irwin and Fran Martin
H.L. Mason
Vincent and Margot Massey
Glenn D. Maxwell
Helen Byrm May
Carole Mayer
Micheline Maynard
Susan C. Guszynski and
Gregory F. Mazure
LaRuth C. McAfee
Richard and Florence McBrien
Margaret and Harris McClamroch
Dores M. McCree
Neil and Suzanne McGinn
Mary and Norman McClver
Bill and Ginny McKeachie
Nancy A. and Robert E. Meader
William and Marilyn Meadowcroft
Marilyn J. Meeker
Robert and Kathleen Meggison
Bob and Doris Melling
Allen and Marilyn Menlo
Warren and Hilda Merchant
Ingrid Merikoski
Hely Merle-Benner
George R. and Brigitte Merz
Julie and Scott Merz
Robert and Bettie Metcalf
Helen Metzner
Don and Lee Meyer
Suzanne M. Meyer
Shirley and Bill Meyers
Helen M. Michaels
William and Joan Mikkelsen
John W. Milford
Prof. and Mrs. Douglas Miller
Carmen and Jack Miller
James A. and Kathryn Miller
Sonya R. Miller
Bob and Carol Milstein
Dr. and Mrs. James B. Miner
Olga Ann Moir
Mary Jane Molesky
Molloy Foundation
Jim and Jeanne Montie
Arnold and Gail Morawa
Robert and Sophie Mordis
Dr. and Mrs. George W. Morley
- A. A. Moroun
Muriel Moskowitz
James and Sally Mueller
Tom and Hedi Mulford
J. Thomas and Carol Mullen
Gavin Eadie and Barbara Murphy
Lora G. Myers
Drs. Louis and Julie Nagel
Rosemarie Nagel
Joan Nassauer
Arthur and Dorothy Nesse
Sharon and Chuck Newman
John and Ann Nicklas
Susan and Richard Nisbett
Christher E. Nordman
Richard and Caroline Norman
Richard S. Nottingham
Dr. Nicole Obregon
John and Lexa O'Brien
Patricia O'Connor
Peter M. and Alicia C. Olin
Cherie M. Olsen
Elizabeth Olson and Michele Davis
Nels R. and Mary H. Olson
J. L. Onclay
Robert and Elizabeth Oneal
Kathleen I. Operhall
Ted and Joan Operhall
Mr. and Mrs. James R. Packard
Jenny Palmer
Sujit and Uma Pandit
Donna D. Park
Bill and Katie Parker
Alka Patel
Eszther Pattantysus and Tibor Nagy
Nancy K. Paul
Vasso and Dimitris Pavlidis
Wade D. and Carol Peacock
William and Susan Penner
Steven and Janet Pepe
Don and Giannine Perigo
Bradford Perkins
Susan A. Perry
Neal W. Persky, M.D.
Jeff Javowiaz and Ann Marie Petach
Robert G. and Diane L. Petit
Bryan and Ruth Pfingst
Douglas Phelps and
Gwendolyn Jessie-Phelps
Jim and Julie Phelps
Mr. and Mrs. Frederick R. Pickard
Nancy S. Pickus
Robert and Mary Ann Pierce
William and Betty Pierce
Dr. and Mrs. James Pikulski
Wayne and Suellen Pinch
Brenda Pontillo
Robert and Mary Pratt
Jacob M. Price
Larry and Beverly Price
John and Nancy Prince
Bradley and Susan Pritts
Lisa M. Profera
Morton and Diane Raban
Mr. and Mrs. Mitchell Radcliff
Dr. and Mrs. Tushar N. Raiji
Cheryl L. Rakich
Mr. and Mrs. Robert H. Rasmussen
Ruth Rattner
Dr. and Mrs. Mark Rayport

Maxwell and Marjorie Reade
 Mr. and Mrs. Richard W. Redman
 Michael J. Redmond
 Russell and Nancy Reed
 Mr. and Mrs. Stanislav Rehak
 Georgia Reid
 Mr. and Mrs. Bernard E. Reisman
 James and Judith Reiter
 Anne and Fred Remley
 Duane and Katie Renken
 John and Nancy Reynolds
 Alice Rhodes
 Lou and Sheila Rice
 Carol P. Richardson
 Kurt and Lori Riegger
 Thomas and Ellen Riggs
 Lita Ristine
 Kathleen Roelofs Roberts
 Dave and Joan Robinson
 Jim and Kathleen Robinson
 Janet K. Robinson, Ph.D.
 Jonathan and Anala Rodgers
 Mary Ann and Willard Rodgers
 Joseph and Joan Rogers
 Mr. and Mrs. Stephen J. Rogers
 Leslie and Ann Rogers
 Mary F. Loeffler and
 Richard K. Rohrer
 Michael J. and Yelena M. Romm
 Elizabeth A. Rose
 Bernard and Barbara Rosen
 Stephen Rosenblum and
 Rosalyn Sarver
 Richard Z. and Edie W. Rosenfeld
 Elva M. Rosenzweig
 Charles W. Ross
 Marlene Ross
 Samuel and Irene Rupert
 Robert and Beth Ruskin
 Mitchell and Carole Rycus
 Barry Ryder and Deborah Salerno
 Ellen and Jim Saalberg
 Theodore and Joan Sachs
 Mr. and Mrs. William Sachs
 Arnold Sameroff and
 Susan McDonough
 Miriam S. Joffe Samson
 John and Reda Santinga
 Harry and Elaine Sargous
 Helga and Jochen Schacht
 Chuck and Gail Scharte
 Mary A. Schieve
 Gary and Claudia Schnitker
 Susan G. Schooner
 Thomas H. Schopmeyer
 Yizhak Schotten and
 Katherine Collier
 David and Becky Schultz
 Aileen Schulse
 Dietrich and Mary Schulze
 Art and Mary Schuman
 Ed and Sheila Schwartz
 Ruth Scodel
 David and Darlene Scovell
 Louis and Sherry L. Senunas
 Mary M. Sexton (Mrs. George H.)
 Brahm and Lorraine Shapiro
 David and Elvera Shappirio
 Thomas and Valerie Yova Sheets
 Ingrid and Cliff Sheldon

Mr. and Mrs. Patrick M. Sherry
 Rev. William J. Sherzer
 Drs. Jean and Thomas Shope
 Hollis and Martha A. Showalter
 Mary Alice Shulman
 Dr. Douglas and Barbara Siders
 Dr. Bruce M. Siegan
 Milton and Gloria Siegel
 Alida and Gene Silverman
 Geoffrey and Morrine Silverman
 Carl Simon and Bobbi Low
 Michael and Maria Simonte
 Donald and Susan Sinta
 Irma J. Sklenar
 Beverly N. Slater
 Kirsten Marie Carr and
 Theodore A. D. Slawewski
 Donald C. and Jean M. Smith
 Donald and Dorothy Smith
 Dr. and Mrs. Michael W. Smith
 Susan E. Smith
 Robert and Susan Soderstrom
 Nathan and Patrick Sohny
 Hugh and Anne Solomon
 James A. Somers
 Dr. Sheldon and Sydelle Sonkin
 Errol and Pat Soskolne
 Aline Soules
 Becki Spangler and Peyton Bland
 Elizabeth Spencer and
 Arthur Schwartz
 Mrs. Herbert W. Spendlove (Anne)
 Jim Spevak
 Nancy Spezia
 Irving M. Stahl and Pamela M. Rider
 Gary and Diane Stahle
 Constance D. Stankrauff
 Dr. and Mrs. William C. Stebbins
 Frank D. Stella
 William and Georgine Steude
 Jim and Gayle Stevens
 Rick and Lia Stevens
 Barbara and Bruce Stevenson
 John and Beryl Stimson
 James L. Stoddard
 Mr. and Mrs. James Bower Stokoe
 Eric and Ines Storchok
 Ellen M. Strand and
 Dennis C. Regan
 Clinton and Aileen Stroebel
 Joe Stroud and Kathleen Fojtik
 Mary Stubbins
 Donald and Barbara Sugerman
 Michael and Peg Supernault
 Earl and Phyllis Swain
 Richard and June Swartz
 Rebecca Sweet and Roland Loup
 Rebecca Szabo
 Michael W. Taft and
 Catherine N. Herrington
 Margaret Talburt and James Peggs
 Jim and Sally Tamm
 Denise Marie Tanguay
 Larry and Roberta Tankanow
 Gerald and Susan Tarpley
 Frank and Carolyn Tarzia
 Robert and Carolyn Tate
 Carol and Jim Thiry
 William Jerry Thornton
 Anna Thuren

Peggy Tieman
 Mr. and Mrs. W. Paul Tippet
 Bruce Tobis and Alice Hamele
 Ronald and Jacqueline Tonks
 John and Geraldine Topliss
 Jim Toy
 Sara Trinkaus
 Ken and Sandy Trosien
 Luke and Merling Tsai
 Jeff and Lisa Tulin-Silver
 Claire and Jerry Turcotte
 William and Jewell Tustian
 Alvan and Katharine Uhle
 Mary L. Unterburger
 Bernice G. and Michael L. Updike
 Toru and Tamiko Urata
 Amy Valade
 Madeleine Vallier
 Carl and Sue Van Appledorn
 Bram and Lia van Leer
 Eldon and Beth Van Lier
 Fred and Carole van Reesema
 Leo and Peggy Van Sickle
 Phyllis Vegeter
 Sy and Florence Veniar
 Ryan and Ann Verhey-Henke
 James H. Vincent
 Alice and Joseph Vining
 Harue and Tsuguyasu Wada
 Jill Wagner
 Virginia Wait
 George and Lorraine Wales
 David C. and Elizabeth A. Walker
 Timothy Wang
 Jill A. Warren
 Lorraine Nadelman and
 Sidney Warschausky
 Evy and Morrie Warszawski
 Ruth and Chuck Watts
 Joan D. Weber
 Edward C. Weber
 Joan M. Weber
 Jack and Jerry Weidenbach
 Carolyn J. Weigle
 Neal and Susan Weinberg
 Rosalyn and Gerald Weintraub
 Mr. and Mrs. Harvey L. Weisberg
 Barbara Weiss
 Lisa and Steve Weiss
 Kim Werner
 Helen Michael West
 Tim and Mim Westerdale
 Paul E. Duffy and
 Marilyn L. Wheaton
 B. Joseph and Mary White
 James B. and Mary F. White
 Mr. and Mrs. Nathaniel Whiteside
 Nancy Wiernik
 William and Cristina Wilcox
 Catherine Wilkerson
 Benjamin D. Williams
 John Troy Williams
 Sara S. Williams
 Shelly F. Williams
 Anne Marie and Robert J. Willis
 Bruce Wilson and
 Carol Hollenshead
 Leslie C. Wimsatt
 Donna Winkelman and
 Tom Easthope

Sarajane and Jan Z. Winkelman
 Beth and I. W. Winsten
 James H. and Mary Anne Winter
 Dr. and Mrs. Lawrence D. Wise
 Jeff and Linda Witzburg
 Karen Wixson
 Stanley B. Wolfe, M.D.
 Dr. and Mrs. Ira S. Wollner
 Richard E. and Muriel Wong
 Ronald and Wendy Woods
 Stan and Pris Woollams
 Israel and Fay Woronoff
 Harry Wright
 Lynne Wright
 Phyllis B. Wright
 Alfred and Corinne Wu
 Fran and Ben Wylie
 Mr. Frank Youkstetter
 James and Gladys Young
 Mr. and Mrs. Martin Zeile
 John J. Zerbic
 Ahmet, Christie, Emine Zeren
 Daniel and Mary Ziegeler
 Ronald W. Zorney
 Erik and Lineke Zuiderweg
 Gail and David Zuk

BUSINESSES

Ann Arbor Center for Financial Services
 Ayse's Courtyard Cafe
 General Systems Consulting Group
 SWEA Inc.
 Thalner Electronic Labs

FOUNDATIONS

World Heritage Foundation
 "The Prechter Fund"

BUSINESS LEADERSHIP CIRCLE

AAA Michigan
 Alf Studios
 Ann Arbor Automotive
 Ann Arbor Center for Financial Services
 Arthur Andersen LLP
 Atlas Tool, Inc.
 AutoCom Associates
 Ayse's Courtyard Cafe
 Bank of Ann Arbor
 Bank One, Michigan
 The Bartech Group, Inc.
 Blue Nile Restaurant
 Brauer Investments
 Butzel Long Attorneys
 Cafe Marie
 CFI Group
 Charles Reinhart Company Realtors
 Clark Professional Pharmacy
 Coffee Express Co.
 Comerica Incorporated

Consumers Energy
 Dennis A. Dahlmann Inc.
 Detroit Edison
 Dow Automotive
 Dupuis & Ryden P.C.
 Edward Surovell Realtors
 Edwards Brothers, Inc.
 Elastizell Corp of America
 Ford Motor Company Fund
 Forest Health Services
 Corporation
 Galamp Corporation
 Garris, Garris, Garris & Garris Law
 Office
 General Systems Consulting
 Guardian Industries Corporation
 Hudson's Project Imagine
 Ideation, Inc.
 Joseph Curtin Studios
 KeyBank
 Lewis Jewelers
 Malloy Lithographing, Inc.
 Masco Corporation
 McKinley Associates
 Miller, Canfield, Paddock and
 Stone P.L.C.
 National City Bank
 Office of the Provost,
 University of Michigan
 O'Neal Construction
 Palladium Associates
 Pepper Hamilton LLP
 Personnel Systems, Inc./Arbor
 Technical Staffing/Arbor
 Temporaries, Inc.
 Pfizer Global Research and
 Development; Ann Arbor
 Laboratories
 Pollack Design Associates
 Republic Bank
 Scientific Brake & Equipment
 Sesi Lincoln Mercury
 SWEA Inc.
 Thalner Electronic Labs
 Thomas B. McMullen Company
 Vibrant of Ann Arbor
 Visteon
 Wolverine Technical Staffing, Inc.

BURTON TOWER SOCIETY

The Burton Tower Society is a very special group of University Musical Society friends. These people have included the University Musical Society in their estate planning. We are grateful for this important support to continue the great traditions of the Society in the future.

Carol and Herb Amster
 Mr. Neil P. Anderson
 Catherine S. Arcure
 Mr. and Mrs. Pal E. Barondy
 Mr. Hilbert Beyer
 Elizabeth Bishop
 Barbara Everitt Bryant

Pat and George Chatas
 Mr. and Mrs. John Alden Clark
 Douglas D. Crary
 Dr. and Mrs. Michael S. Frank
 Beverley and Gerson Geltner
 Mr. Edwin Goldring
 Mr. Seymour Greenstone
 Mr. and Mrs. Richard Ives
 Marilyn Jeffs
 Thomas C. and
 Constance M. Kinnear
 Sally C. Maggio
 Charlotte McGeoch
 Michael G. McGuire
 Dr. Eva Mueller
 Len and Nancy Niehoff
 Dr. and Mrs. Frederick O'Dell
 Mr. and Mrs. Dennis Powers
 Mr. and Mrs. Michael Radock
 Mr. and Mrs. Jack W. Ricketts
 Herbert Sloan
 Roy and JoAn Wetzel
 Mr. and Mrs. Ronald G. Zollars

MEMORIALS

Tom Bob Boothby
 David Eklund
 Kenneth Haas
 George R. Hunsche
 Frederick C. Matthaei, Sr.
 Robert Meredith
 Gwen and Emerson Powrie
 Steffi Reiss
 Charles R. Tieman
 Mrs. Durwell Vetter
 Francis Viola III
 Carl H. Wilmot
 Peter Holderness Woods

IN-KIND GIFTS

Amadeus Café
 Ann Arbor Acura
 Ann Arbor Art Center
 Back Alley Gourmet
 Bella Ciao Trattoria
 Bivouac Outdoor Clothing and
 Equipment
 Bodywise Therapeutic Massage
 Café 303
 Catherine Arcure
 Kathleen Benton and Robert
 Brown
 Chelsea Flower Shop
 Peter and Jill Corr
 The Original Cottage Inn
 Paul and Pat Cousins
 Cousins Heritage Inn
 Dr. and Mrs. Ronald Cresswell
 D'Amato's Neighborhood
 Restaurant
 David Smith Photography
 Peter and Norma Davis
 Katy and Tony Derezinski
 Dough Boys Bakery
 Bob and Chris Eurrirt
 Katherine and Damian Farrell

Fine Flowers
 Ken and Penny Fischer
 Food Art
 The Gandy Dancer
 Beverley and Gerson Geltner
 Great Harvest Bread Company
 John Leidy Shop
 John's Pack & Ship
 Mercy and Stephen Kasle
 Kerrytown Bistro
 King's Keyboard House
 Ray Lance
 Le Dog
 Stephanie Lord
 Mainstreet Ventures
 Jeanne and Ernest Merlanti
 Michigan Car Services, Inc.
 and Airport Sedan, LTD
 Ron Miller
 The Moveable Feast
 Nicola's Books, Little Professor
 Book Co.
 Paesano's Restaurant
 Randall and Mary Pittman
 Randy Parrish Fine Framing
 Red Hawk Bar & Grill
 Regrets Only
 Ritz Camera One Hour Photo
 Maya Savarino
 Peter Savarino
 Stephanie Savarino
 Ann and Tom Schriber
 Seva
 Shaman Drum Bookshop
 Howard and Aliza Shevrin
 Herbert Sloan
 Irving and Carol Smokler
 Ann and Jim Telfer
 Weber's Restaurant
 Elizabeth and Paul Yhouse
 Zanzibar

GIVING LEVELS

Soloists	\$25,000 or more
Maestro	\$10,000 - 24,999
Virtuosi	\$7,500 - 9,999
Concertmaster	\$5,000 - 7,499
Leader	\$2,500 - 4,999
Principal	\$1,000 - 2,499
Benefactor	\$500 - 999
Associate	\$250 - 499
Advocate	\$100 - 249
Friend	\$50 - 99

ADVERTISER INDEX

12	Ann Arbor Summer Festival
28	Bank of Ann Arbor
28	Charles Reinhart Company
32	Edward Surovell Realtors
FC	Ford Motor Company
30	Harmony House
30	Howard Cooper
BC	Key Bank
10	Merkel Furniture
26	Michael Lee and OPUS Mime
32	Quinn/Evans Architects



Helping keep great
music alive.

At Key, we're committed to keeping great music alive. Because the brilliant artistry of the University Musical Society does more than please the ear. It soothes the soul.



**Achieve
anything.**

1.800.KEY2YOU®
Key.com

Banking • Investments • Insurance

Key.com is a service mark of KeyCorp. Securities are offered through McDonald Investments Inc., A KeyCorp Company and member NASD/NYSE/SIPC. Investments and insurance available through affiliates of KeyBank:

• NOT FDIC INSURED • NO BANK GUARANTEE • MAY LOSE VALUE



*Ford Motor Company
Fund*

The Ford Honors Program is made possible by Ford Motor Company Fund