

EKATERINA MAXIMOVA AND VLADIMIR VASILIEV
STARS OF THE BOLSHOI BALLET AND COMPANY

Sunday, October 13, 1991, at 2:00 p.m. and 8:00 p.m.
Power Center for the Performing Arts
Ann Arbor, Michigan

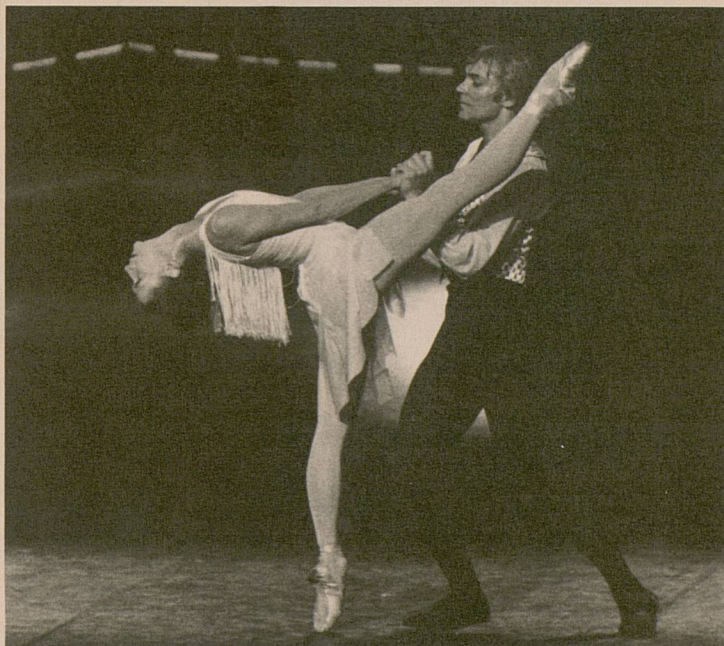
Ekaterina Maximova, Prima Ballerina Assoluta, Bolshoi Ballet
Vladimir Vasiliev, Premier Danseur, Bolshoi Ballet

Principal Dancers, Bolshoi Ballet

Irina Piatkina
Elena Radchenko
Victor Baryckin
Valery Anisimov

Principal Dancers, Kirov Ballet

Lubov Kunakova
Elena Evteeva
Eldar Aliev
Sergei Bereznoi



Ekaterina Maximova and Vladimir Vasiliev

With these two concerts by the Stars of the Bolshoi Ballet and Company, the University Musical Society takes pleasure in observing the opening of the Power Center for the Performing Arts 20 years ago this month.

PROGRAM

Sunday, October 13, 2:00 p.m.

SUITE NOSTALGIQUE

Choreography: Vladimir Vasiliev

Music: Peter Ilich Tchaikovsky, Mikhail Glinka,

Sergei Rachmaninoff, Sergei Prokofiev

Pianist: Emma Lippa, Pianist of the Bolshoi Theatre

Danced by

The Entire Company

At first, *Suite Nostalgique*, with music by the great Russian composers Glinka, Tchaikovsky, Rachmaninoff, and Prokofiev, was entitled *I Want to Dance* and was staged in honor of the great Russian ballerina Galina Ulanova. With the differing casts throughout the years, the ballet has undergone several changes. But despite these changes, the most important aspects of the ballet, in my opinion — the mood of Russian romantic classical dance, the author's great love of the glory of the past, and the overwhelming respect towards the old masters of our [Moscow] choreographic school — have remained untouched. Therefore, the renaming of this ballet to *Suite Nostalgique* is one that I feel is larger in scope and fully expresses my relationship to dance.

— Vladimir Vasiliev

INTERMISSION

Grand Pas de deux from Act III of THE SLEEPING BEAUTY

Choreography: Marius Petipa (1818-1910)

Music: Peter Ilich Tchaikovsky (1840-1893)

Danced by

Irina Piatkina and Valery Anisimov

Princess Aurora and Prince Desire appear resplendent for this last pas de deux during the wedding celebration, after the numerous divertissements. This expansive duet, emanating warmth and grace, is really the culminating point of the ballet.

Pas de deux from Act II of LA BAYADERE

Choreography: Marius Petipa

Music: Leon Minkus (1826-1917)

Danced by

Lubov Kunakova and Eldar Aliev

The heroine of this ballet is Nikiya, a bayadere (an Indian temple dancer) who loves, and is loved in return, by Solor, the warrior hero. However, the Rajah's daughter is a rival for Solor's affections. Nikiya is eventually betrayed by Solor and subsequently dies from a snake bite. Hoping to free himself from remorse and anguish, he smokes opium and, hallucinating, dreams of meeting Nikiya in "the Kingdom of the Shades" among the dead bayaderes. This is Petipa's idea of heaven — a world of peace, dignity, symmetry, and harmony expressed through the finest classical choreography and dance technique. Nikiya's serene detachment promises the forgiveness for which Solor yearns.

Pas de deux from LA PAPIILLON

Choreography: Arthur Saint-Leon (1821-1870)

Music: Jacques Offenbach (1819-1880)

Danced by

Elena Evteeva and Sergei Berezhnoi

Emma Livry first performed this full-length ballet, with choreography by Marie Taglioni, at the Paris Opera in 1860. The plot concerns a young and beautiful maiden who is turned into a butterfly by an evil fairy. Saint-Leon succeeded Perrot as ballet master in St. Petersburg. He was married to Fanny Cerrito and is famous for choreographing *Coppelia*.

Grand Pas de deux from Act III of DON QUIXOTE

Choreography: Marius Petipa

Music: Leon Minkus

Danced by

Elena Radchenko and Victor Baryckin

Kitri and Basil perform this striking pas de deux from the full-length story ballet based on the Cervantes novel. It takes place during their wedding festivities. After a bold, lyrical entrance, the ballerina and her partner dance a sustained duet followed by an engaging, diamond-like variation for her and a spectacular solo for him. A joyous climax is reached with her famous *fouettes* and his *tours a la seconde*.

Duet from ANYUTA

Choreography: Vladimir Vasiliev

Music: Valery Gavrilin

Danced by

Ekaterina Maximova and Vladimir Vasiliev

Vasiliev created this ballet for Maximova, originally for Soviet television, and then expanded it for the stage in 1986. This vivid ballet uses classical vocabulary, but creates an up-to-date atmosphere. It is based on a short story by Chekhov about Anna, a woman who was once in love with a young student, but who marries instead a rich government official. Men enjoy her company, but she has many nostalgic memories. In this duet, she dances with her father, a man who has turned to drink after the death of his wife.

THE DYING SWAN

Choreography: Michel Fokine (1880-1942)

Music: Camille Saint-Saëns (1835-1921)

Danced by

Elena Evteeva

This famous solo arranged by Fokine for Pavlova epitomizes the art of ballet for many people. Pavlova was perhaps the greatest dancer ballet has ever known — in Paris, she caused as much of a sensation as her contemporary Nijinsky. With 20 years of touring, she achieved international fame, and thousands were moved by the depth and range of her artistry. The choreography, with a complete but simple outline, captures the poignancy of all mortality with this fabled song of a swan before death. The serene gliding movements of the opening progress to more intense fluttering — at times melancholic — as we see and experience the final struggle for life.

Coda from 4th Movement of SYMPHONY NO. 6, "Pathétique"

Choreography: Vladimir Vasiliev

Music: Peter Ilich Tchaikovsky

Danced by

The Entire Company

This long adagio is a highly unconventional way to close a symphony. The lugubrious strings evoke a gloomy mood — there is a period of adjustment, then suffering, followed by wild tempo fluctuations. It was choreographed by Vasiliev especially for this tour to include the entire cast.

— *Notes by Wendy Walker*
Ballet Mistress, American Ballet Theatre



Maximova and Vasiliev

PROGRAM

Sunday, October 13, 8:00 p.m.

Grand Pas de deux from Act III of THE SLEEPING BEAUTY

Choreography: Marius Petipa (1818-1910)
Music: Peter Ilich Tchaikovsky (1840-1893)

Danced by
Irina Piatkina and Valery Anisimov

Grand Pas de deux from Act III of DON QUIXOTE

Choreography: Marius Petipa
Music: Leon Minkus

Danced by
Elena Radchenko and Victor Baryckin

Kitri and Basil perform this striking pas de deux from the full-length story ballet based on the Cervantes novel. It takes place during their wedding festivities. After a bold, lyrical entrance, the ballerina and her partner dance a sustained duet followed by an engaging, diamond-like variation for her and a spectacular solo for him. A joyous climax is reached with her famous *fouettes* and his *tours a la seconde*.

THE DYING SWAN

Choreography: Michel Fokine (1880-1942)
Music: Camille Saint-Saëns (1835-1921)

Danced by
Elena Evteeva

This famous solo arranged by Fokine for Pavlova epitomizes the art of ballet for many people. Pavlova was perhaps the greatest dancer ballet has ever known — in Paris, she caused as much of a sensation as her contemporary Nijinsky. With 20 years of touring, she achieved international fame, and thousands were moved by the depth and range of her artistry. The choreography, with a complete but simple outline, captures the poignancy of all mortality with this fabled song of a swan before death. The serene gliding movements of the opening progress to more intense fluttering — at times melancholic — as we see and experience the final struggle for life.

Pas de deux from Act II of LA BAYADERE

Choreography: Marius Petipa
Music: Leon Minkus (1826-1917)

Danced by
Lubov Kunakova and Eldar Aliev

Elegy from SUITE NOSTALGIQUE

Choreography: Vladimir Vasiliev
Music: Peter Ilich Tchaikovsky, Mikhail Glinka,
Sergei Rachmaninoff, Sergei Prokofiev
Pianist: Emma Lippa, Pianist of the Bolshoi Theatre

Danced by
Ekaterina Maximova and Vladimir Vasiliev

PAS DE QUATRE

Choreography: Sir Anton Dolin (1904-1983)
after Jules Perrot (1810-1892)
Music: Cesare Pugni (1802-1870)

Danced by
Irina Piatkina, Elena Radchenko, Lubov Kunakova, Elena Evteeva
Perrot choreographed this striking divertissement to unite for the first time the four greatest dancers of the period. It was a competition in virtuosity; each dancer was given an opportunity to shine in her particular style and grace. The dancers were:
Marie Taglioni (elevation and extreme lightness, sylph-like)
Carlotta Grisi (lively and spirited)
Fanny Cerrito (simple, fresh, great strength, and brio)
Lucile Grahn (tall, slim, and majestic)

INTERMISSION

TANGO, FRAGMENTS OF A LIFE

Choreography: Vladimir Vasiliev
Music: Based on traditional Argentinian Tangos

Danced by
The Entire Company

Tango, Fragments of a Life, with music by several Argentinian composers, represents the small events and revelations of life that could, and in fact do, happen to many. Pain, joy, smiles, tears, laughter, delight, desperation, and hope accompany us, and all artists, throughout the stretch of our artistic work and life.

— Vladimir Vasiliev



Lighting Design/Production Stage Manager: Sean Murphy

Ekaterina Maximova and Vladimir Vasiliev — Stars of the Bolshoi Ballet and Company — appear by arrangement with Columbia Artists Management Inc., New York City.

Ekaterina Maximova joined the Bolshoi Ballet at age 18, made her official debut in the Peasant Pas de Deux in *Giselle*, and, the following year, attracted the attention of the Moscow ballet community dancing Katerina in Grigorovich's *The Stone Flower*. She caused a sensation in the same role as part of the Bolshoi's first tour to the United States and became an instant international favorite. Since that time, she has become known to dance lovers throughout the world for her tours with the Bolshoi Ballet, appearances as Principal Dancer with the world's leading ballet companies, and performances on film, video, and television.

Winner of numerous honors, including the Gold Medal at the International Ballet Competition in Varna and the Anna Pavlova Prize in Paris, she has also been bestowed with the title People's Artist of the U.S.S.R. In the fall of 1990, the State Theatre Museum of Moscow mounted an exhibition devoted to the artistry of Ekaterina Maximova and her husband, Vladimir Vasiliev. Included in the exhibit were videos, costumes, and photographs, as well as original paintings by Vasiliev.

Ekaterina Maximova has appeared as a Principal Dancer with the Paris Opera Ballet, Rome Opera, La Scala, Teatro San Carlo, Teatro Colon, and Ballet de XX Siecle, where she danced Juliet in Bejart's transcription of Berlioz's *Romeo and Juliet*. In recent seasons, Ekaterina Maximova has starred with Vladimir Vasiliev in Roland Petit's *Blue Angel in Paris*, appeared in the United States as guest star with the Moscow Classical Ballet, and danced with Vasiliev in a new ballet, *Youth of Nijinsky*, at the Teatro San Carlo in Naples, Italy. In 1990, Ekaterina Maximova danced the role of Tatiana in *Eugene Onegin* on three continents, with the English National Ballet, the Australian National Ballet, and National Ballet of Canada in Toronto.

Ekaterina Maximova's roles at the Bolshoi Ballet include Mazurka and Prelude in *Chopiniana*, Kitri in *Don Quixote*, Jeanne in *The Flames of Paris*, Giselle, Bachante in *Walpurgis-Nacht*, Maria in *The Fountain of Bakhchisarai*, Cinderella, Masha in *The Nutcracker*, Odette/Odile in *Swan Lake*, Aurora in *The Sleeping Beauty*, The Girl in *Icarus*, Juliet in *Romeo and Juliet*, and the title role



Maximova and Vasiliev

in *Anyuta*. Her coaches have included the illustrious ballerinas Elizaveta Gerdt, Galina Ulanova, and Raissa Struchkova.

Vladimir Vasiliev was born in Moscow and studied at the Bolshoi Choreographic School. At age 18, he entered the Bolshoi Ballet, and, before he was twenty, had already danced three leading roles: Danilo in Grigorovich's *The Stone Flower*, Prince in Zacharov's *Cinderella* and Ivan the Fool in A. Radunsky's *The Little Humpbacked Horse*. It was as Danilo in *The Stone Flower* that Vladimir Vasiliev made his triumphant first appearance in New York, at age 19, as part of the Bolshoi Ballet's debut tour of the United States.

Mr. Vasiliev quickly became an international favorite, known for his interpretations of a wide range of classical and Soviet heroes. He has appeared on Soviet, British, French, and Italian television, and his numerous ballet films are widely distributed on videotape. With his wife, Ekaterina Maximova, Mr. Vasiliev appeared in the film of *La Traviata* directed by Franco Zeffirelli.

Mr. Vasiliev is also known to ballet lovers as a gifted choreographer whose ballets include *Icarus*, *Macbeth*, *Suite Nostalgique*, *Fragments of a Life* and *Anyuta*. Mr. Vasiliev recently staged Prokofiev's *Romeo and Juliet* in

Moscow with the Stanislavski Company, which took the production, conducted by Mstislav Rostropovich, on a triumphant tour of Spain in July 1990. Recently, he staged his version of *Don Quixote* for American Ballet Theatre. The work had its opening in Chicago in February 1991 and was seen at Lincoln Center in New York two months later.

In recent seasons, Vladimir Vasiliev has appeared with Ekaterina Maximova in the new ballet *Youth of Nijinsky* in the Teatro San Carlo in Naples, Italy, and in *Giselle* in Paris, where they were guest artists with the Kirov Ballet. In August 1990, Mr. Vasiliev traveled to Verona for performances of the Greek *Zorba*.

Winner of numerous honors, including the Grand Prize at the International Competition in Varna, Bulgaria, he has also been awarded the Lenin Prize and was bestowed with the title People's Artist of the U.S.S.R. Mr. Vasiliev has toured the world with the Bolshoi and made guest appearances with major ballet companies throughout the world. Among his most famous roles have been Spartacus in Grigorovich's version, *Ivan The Terrible*, Basil in *Don Quixote*, Albrecht in *Giselle*, Romeo in Lavrovsky's *Romeo and Juliet*, Desire in *The Sleeping Beauty*, Prince in *The Nutcracker*, Romeo in Bejart's transcription of Berlioz's *Romeo and Juliet*, and Petrushka in Bejart's version.

The Bolshoi Ballet is the leading ballet company of the Soviet Union, famous for its elaborately staged productions of the classics and children's ballets that preserve the traditions of nineteenth-century classical dance. The Bolshoi Ballet took that name in 1825, when the new Bolshoi Theatre in Moscow took over the ballet company of its predecessor, the Petrovsky Theatre, which had been established in 1776. The company's style, later called "the Moscow style," gradually emerged, more spontaneous and influenced by Russian folklore than the traditional style that was the hallmark of the St. Petersburg companies.

Throughout the nineteenth-century, such prominent choreographers as Marius Petipa and Arthur Saint-Leon staged productions at the Bolshoi Theatre. Aleksandr Gorsky was appointed *maitre de ballet* in 1900

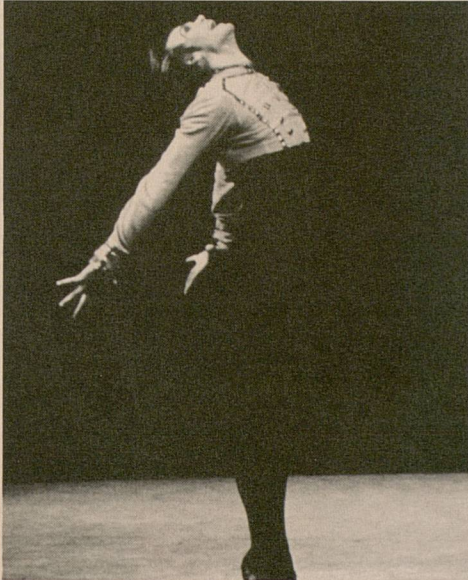


Maximova and Vasiliev

and initiated a new era for the company, introducing the realism in scenery and costume that has since characterized the group's productions. Leonid Lavrovsky took over as director in 1944, and under his guidance the company continued to blossom. In 1964, Yuri Grigorovich succeeded Lavrovsky as chief choreographer, a position he holds to this day. Ekaterina Maximova and Valery Vasiliev made their sensational New York debuts in Grigorovich's *The Stone Flower* by Prokofiev, as part of the Bolshoi's triumphant debut tour of the United States.

"Bolshoi," the Russian word for big, is descriptive of the Bolshoi Ballet, which has over 300 dancers, backed by a large teaching and rehearsal staff. Technical staff, musicians, and administration bring the number to over 3,000 people within the Opera and Ballet Theatre. Each year, around 2,000 young hopefuls, ages nine and ten, attend auditions at the Academy. Of the 2,000, only 80, sometimes less, boys and girls will succeed. The training takes eight years, and the students graduate with a ballet dancer's diploma. The super-talented few will be taken into the Bolshoi, while many of the rest will be hired by other Soviet ballet companies. Whatever their professional fate may be, the emerging dancers will have benefited from the finest training programs available.

Elena Radchenko received her training at the famous Leningrad Choreographic Institute (Vaganova). She remained in Leningrad as a member of the Kirov Ballet until 1980, when she was invited to join the Bolshoi Ballet as a principal dancer. As such, Miss Radchenko has toured internationally with the Bolshoi. Her roles with the Bolshoi embrace the classical repertoire, including ballets such as *Swan Lake*, *Don Quixote*, *Raymonda* and *Carmen*. Miss Radchenko is a laureate of the Moscow International Ballet Competition.



Victor Baryckin

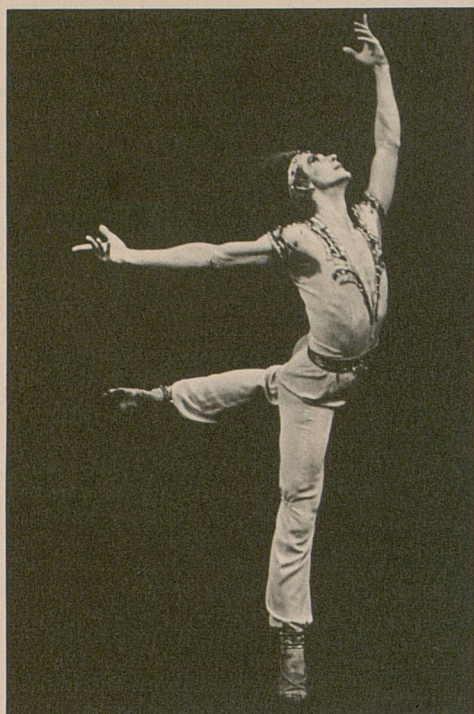
Victor Baryckin studied at the Moscow Choreographic Institute. Upon graduation in 1974, Mr. Baryckin joined the Bolshoi Ballet as a principal dancer. His stunning good looks, outstanding technical faculties, and refinement characterize him as one of the Bolshoi Theatre's radiant male dancers. His roles with the Bolshoi include: Albrecht in *Giselle*, Basil in *Don Quixote*, Siegfried in *Swan Lake*, and Desire in *The Sleeping Beauty*, as well as leading roles in *Raymonda*, *Icarus* and *Macbeth*. Mr. Baryckin has accompanied Mr. Vasiliev and Miss Maximova on several tours throughout the United States and Europe and took part in Maya Plisetskaya's critically acclaimed tour of the United States in 1988. For his accomplishments as a member of the Bolshoi Theatre, the title of Honoured Artist of the RSFSR (Russian Federation) was bestowed upon him.



Irina Piatkina

Born in Moscow, **Irina Piatkina** received her training at the famous Moscow Choreographic Institute. Upon graduation in 1978, Miss Piatkina was accepted into the Bolshoi Ballet as a soloist and, as such, has traveled worldwide with that company. Her natural professional gifts, charm, and elegance classify her as one of today's fresh young talents. She dances leading roles at the Bolshoi Theatre in such ballets as *The Sleeping Beauty*, *Giselle*, *Swan Lake* and *The Stone Flower*. Miss Piatkina is a laureate of the Moscow International Ballet Competition.

Pianist **Emma Lipppa** is an Honoured Artist of the RSFSR. She was graduated from the Gnesin's Musical Institute and since 1965 has been a leading pianist of the Bolshoi Theatre. Miss Lipppa is a winner of six international ballet competitions as best pianist and has toured all over the world with the Bolshoi Ballet.



Valery Anisimov

Upon his graduation from the Moscow Ballet Institute, **Valery Anisimov** was invited to join the Bolshoi Ballet as a principal dancer. Mr. Anisimov's natural professional talents and classical refinement distinguish him as a master in the Bolshoi Ballet's classical repertoire. His roles with that company include Siegfried in *Swan Lake*, Albrecht in *Giselle*, Desire in *The Sleeping Beauty*, Jean de Brienne in *Raymonda*, and The Student in *Anyuta*. For his contributions to ballet as a member of the Bolshoi Theatre, Valery Anisimov was awarded the title of Honoured Artist of the RSFSR.



Lubov Kunakova

Lubov Kunakova was born in Izhevsk and received her training at the famous Perm Ballet Academy. Upon graduation, Miss Kunakova began her career in that city's Tchaikovsky Theatre of Opera and Ballet. She first gained critical attention in 1969 at the International Ballet Competition in Moscow, where she was awarded both a diploma and a prize. In 1972, Miss Kunakova won first prize and a gold medal at the Varna Ballet Competition, establishing her as one of the bright new talents in ballet. She joined the Kirov Ballet in 1974 as a principal dancer. As such, she has toured with that company and is widely recognized as one of its most brilliant ballerinas. Her roles with the Kirov include: Odette/Odile in *Swan Lake*, Kitri in *Don Quixote*, Aurora and the Lilac Fairy in *The Sleeping Beauty*, Giselle and Myrta in *Giselle*, Nikiya and Gamzatti in *La Bayadere*, Medora and Gulnara in *Le Corsaire*, and leading roles in ballets such as *Laurencia*, *Paquita*, *Esmeralda*, and Balanchine's *Scotch Symphony*. Miss Kunakova was awarded the title of Honoured Artist of the RSFSR in 1984 and, in 1983, the title of People's Artist of the RSFSR was bestowed upon her.

Born in Odessa, **Sergei Bereznoi** began his ballet training at the Kiev Ballet Academy. In 1967, Mr. Bereznoi moved to Leningrad, where he finished his training, graduating from the Leningrad Choreographic Institute (Vaganova) in 1970. He was immediately accepted into the Kirov Ballet as a soloist and, as such, has traveled with that company as one of its premier danseurs. Mr. Bereznoi's classical elegance and technical prowess distinguish him as one of the refined talents in dance. His roles with the Kirov include: Desire in *The Sleeping Beauty*, Solor in *La Bayadere*, Romeo in *Romeo and Juliet*, Siegfried in *Swan Lake*, Albrecht in *Giselle*, Quasimodo in Roland Petit's *Notre Dame de Paris*, and leading male roles in ballets such as *Paquita*, *Les Sylphides*, *Papillon*, *Raymonda* and *La Sylphide*. In 1980, Mr. Bereznoi was awarded the title of Honoured Artist of the RSFSR and in 1983, awarded the title of People's Artist of the RSFSR for his achievements as a member of the Kirov Theatre.



Sergei Bereznoi

Elena Evteeva graduated from the Leningrad Choreographic Institute (Vaganova) in 1966 and was accepted into the Kirov Theatre as a soloist. Her natural gifts, charm, and slight frame classify her as one of the Kirov's perfect ingenues. Her roles with the Kirov include: Odette/Odile in *Swan Lake*, the title role in *Giselle*, Princess Florine in *The Sleeping Beauty*, and leading roles in ballets such as *La Sylphide*, *Les Sylphides*, *Papillon*, *Cinderella*, and *Romeo and Juliet*. Miss Evteeva is a laureate of the Varna Ballet Competition (1970) and, in 1974, was awarded the title of Honoured Artist of the RSFSR.

Born in Baku, Azerbaijan, **Eldar Aliev** trained at the Baku Ballet Academy and, in 1979, was accepted into the Kirov Ballet as a soloist. His strong physique, natural professional gifts, and stage presence single him out as one of the Kirov's bright new male stars in both the classical and modern repertoires. Mr. Aliev's roles with the Kirov include: Rothbart in *Swan Lake*, Conrad in *Le Corsaire*, Abderkhamen in *Raymonda*, Basil in *Don Quixote*, Solor in *La Bayadere*, Tariel, Avdantil in *The Knight in a Tiger's Skin*, and leading male roles in ballets such as *Paquita* and Balanchine's *Scotch Symphony*. Mr. Aliev has taken part in continual international and national tours of the Kirov Ballet.

UMSCard

The Musical Society wishes to thank these Ann Arbor restaurants and stores for offering special savings to subscribers whose UMS ticket purchases total \$200 or more. UMSCard participants for the 1991-92 season are:

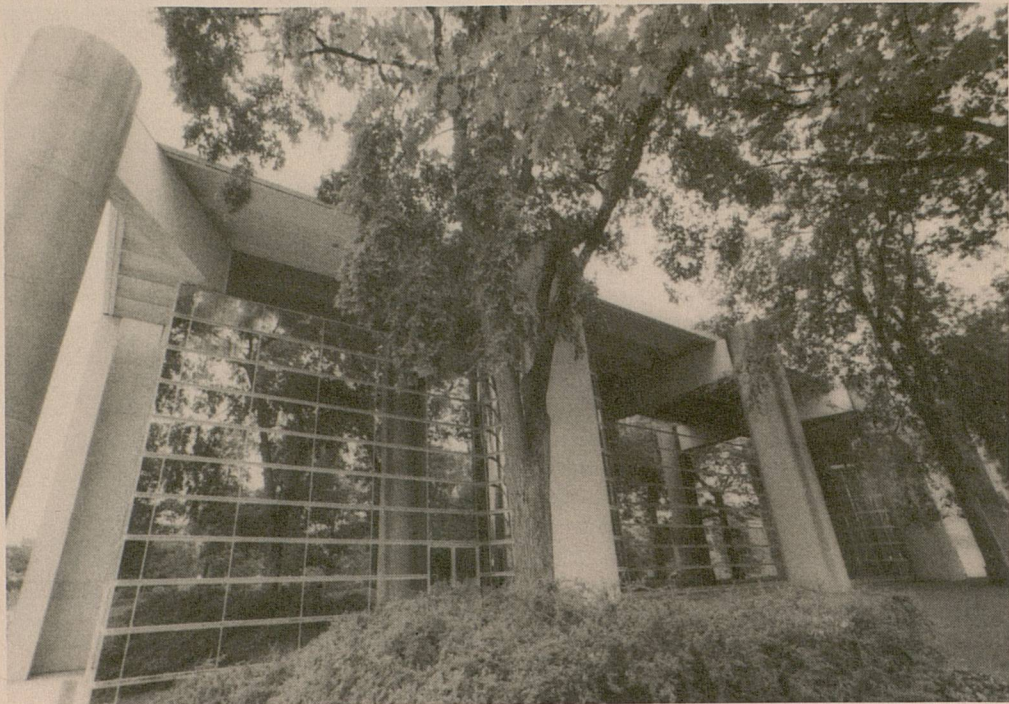
Amadeus Restaurant, 122 E. Washington
Kerrytown Bistro, 415 N. Fifth Ave.

Washington Street Station,
116 E. Washington

Gandy Dancer, 401 Depot Street
(one-time discount only)

L & S Music, 715 N. University
SKR Classical, 539 E. Liberty

A Tribute to the Power Family — Eugene, Sadye, and Philip



Oct. 5, 1971 — Remarks by U-M President Robben W. Fleming at the dedication of the Power Center:

This evening marks a significant milestone in the distinguished traditions of the performing arts at the University of Michigan. For the first time in our history, we have a building in which it is possible to present a full range of attractions including drama, music, opera, and dance.

The Power Center for the Performing Arts is an active, living, theater arts center. Its architectural beauty, the flexibility and adaptability of its staging design, and the variety of productions that will play in it — all contribute to making it a vital performing center for the University and the entire region. The vision and generosity of our distinguished Regent Emeritus and his family have made this possible.

Countless facets of the University of Michigan have received the Powers' interest and support. Their strong personal enthusiasm for the performing arts has culminated in our splendid new theater — a gift not only to the University but to the entire community.

Oct. 5, 1981 — Dedication of the New Wing.

Ten years later, Eugene, Sadye, and Philip were again honored, this time by U-M President Harold Shapiro, at ceremonies dedicating the new wing. This addition provided 28,000 square feet of space for a rehearsal hall (including dance space), a Green Room, workshops for design and construction of scenery, props, and costumes, administrative offices, and new rest room facilities. With the original construction of the building and subsequent improvements, the Power family's generosity, in numerical terms, totaled over four million dollars.

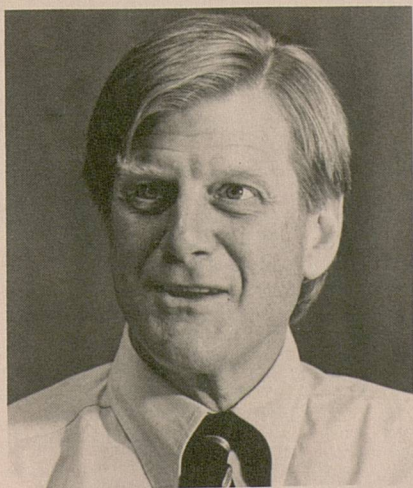
During the 1981 ceremony, bronze portraits of Sadye and Eugene Power were unveiled and later mounted in the south end of the lobby of the Power Center. The portraits were created by the eminent British sculptor John Mills, who earlier had been inspired to create a series of sculptures of the Alvin Ailey dancers after seeing them perform in the Power Center. During a term as visiting professor at the U-M School of Art in 1980, Mr. Mills was commissioned by the University to sculpt the portraits as a fitting tribute to the Powers for their outstanding contributions on behalf of the performing arts.



Eugene and Sadye Power at the 1981 dedication of the new wing.

Though a new theatre was high on the list of University priorities, the Power family determined that the word "theatre" was too limiting. Thus, their decision was to build the Power Center for the Performing Arts, supporting the entire range of performing arts and humanities — "from drama to dance, from music to rhetoric, from cinema to opera," explained Philip Power, now a U-M Regent as his father before him. The building was designed by American architects, Kevin Roche and John Dinkeloo, formerly Saarinen Associates of Connecticut; lighting and stage co-designer was Jo Mielzinger; contractor was O'Neal Construction, Inc. of Ann Arbor.

The opening of the Power Center in 1971 enabled the University Musical Society



Philip H. Power



to nearly double the number of its annual presentations. The world-renowned mime artist Marcel Marceau made his Power Center debut on October 16, 1971, and since then, the Musical Society has presented over 350 concerts in this auditorium, in addition to other events such as the annual Prelude Supper opening the May Festival and the recent UMS Youth Programs of opera and dance.

Although the Musical Society did present some dance companies in Hill Auditorium and even Rackham Auditorium, neither provided the facilities needed for the myriad of possibilities offered by the new Power Center. Dance of all description was now possible — classical ballet, modern, and ethnic dance companies have comprised the bulk of Musical Society offerings, from the National Ballet with Margot Fonteyn, to the Martha Graham Dance Company and Alvin Ailey Dancers, and the famed Mazowsze Polish Folk Company, to mention a very few. Professional opera companies have also performed annually, with the excellent New York City Opera National Company reigning supreme in recent years.

It is now fitting to begin our 21st Annual Choice Series in the Power Center with dancers from the leading ballet company of the Soviet Union, Ekaterina Maximova and Vladimir Vasiliev — Stars of the Bolshoi Ballet and Company.

Thank You Encore!

The much needed and greatly appreciated gifts of our Encore members make great music happen.

The list below includes individuals who have donated to the University Musical Society from July, 1990 through September 3, 1991. If you should notice an error or omission, we sincerely apologize, and would appreciate a call at your earliest convenience (747-1178).

The University Musical Society would also like to thank those generous donors who wish to remain anonymous.

Individuals

BRAVO SOCIETY

Anonymous
Estate of William R. Kinney
Herbert Sloan

CONCERT MASTER

Dr. and Mrs. Robert Aldrich
Herb and Carol Amster
Wilma Steketee-Bean
Dr. and Mrs. James H. Botsford
Mr. and Mrs. Carl A. Brauer, Jr.
Carol and Irving Smokler
Dr. and Mrs. Harry A. Towsley
Ron and Eileen Weiser

LEADER

Catherine S. Arcure
Mary Steffek Blaske and Thomas H. Blaske
Margaret and Douglas Crary
Mr. and Mrs. Thomas C. Evans
Ken, Penny and Matt Fischer
John and Esther Floyd
Dale and Marilyn Fosdick
Mr. and Mrs. Edward P. Frohlich
Mr. and Mrs. Howard S. Holmes
Pat and Kathy Long
Sally and William C. Martin
Mr. and Mrs. Roger Maugh
Paul and Ruth McCracken
Dr. and Mrs. Joe D. Morris
John and Dorothy Reed
David T. Simmons
Michael B. Staebler and Rebecca McGowan

Mr. and Mrs. John C. Stegeman
Mary and Ron Vandenbelt
Marina and Robert Whitman
Paul and Elizabeth Yhouse

GUARANTOR

Mr. and Mrs. Johnny W. Barfield
P.E. Bennett
Richard S. Berger
Maurice and Linda Binkow
Mr. and Mrs. E. Robert Blaske
Daniel T. Carroll and Julie A.C. Virgo
Mr. and Mrs. John Alden Clark
Mr. and Mrs. David S. Clyde
Mr. and Mrs. Roland J. Cole
H. Richard and Florence Crane
Dennis Dahlmann
Jack and Alice Dobson
William T. Dobson and Mary Hunter Dobson
Martin and Rosalie Edwards
Mrs. George H. Forsyth
Mr and Mrs. Edward O. Gilbert
Mr. and Mrs. Britton L. Gordon
Mr. and Mrs. Robert C. Graham
Miss Dorothy Greenwald
Judith A. Heekin
Robert and Joan Howe
James R. and Millie Irwin
Richard and Nancy Judge
Thomas E. and Shirley Y. Kauper
Elizabeth E. Kennedy
Alexander Krezel
Richard C. and Jacqueline Lewis
Mr. and Mrs. Carl J. Lutkehaus, Jr.
David W. McComb
Ted McOmber
Mr. and Mrs. Cruse W. Moss
William R. and Joan J. Olsen
Mr. and Mrs. Charles Overberger
William and Mary Palmer
Mr. Randolph Paschke
Dory and John Paul
Maxine and Wilbur K. Pierpont
Tom and Mary Prining
Mr. and Mrs. Gail W. Rector
Ginny and Ray Reilly
Mary Caroline Rottschafer
Mr. and Mrs. Harold Y. Sakoda
Gary and Carren Sandall
Richard and Norma Sarns
Paul and Betty Snearline
Gerard H. and Colleen Spencer
Dr. Hildreth H. Spencer
Dr. and Mrs. Jeffrey K. Stross
Maya Savarino and Raymond Tanter
Mr. and Mrs. Robert R. Tisch
Jerrold G. Utsler, M.D.
Dr. and Mrs. Francis V. Viola III
Mr. and Mrs. Theodor R. Von Voightlander

Mr. and Mrs. Marc von Wyss
Martha Wallace and Dennis White
Dr. and Mrs. Andrew S. Watson
Jerry and Elise Weisbach
Shelly F. Williams
Len and Maggie Wolin

SPONSOR

Dr. and Mrs. Gerald D. Abrams
Gardner and Bonnie Ackley
William J. Adams
Gigi and Tim Andresen
Bob and Martha Ause
Bradford and Lydia Bates
Mr. Hilbert Beyer
Howard and Margaret Bond
Charles and Linda Borgsdorf
Allen and Veronica Britton
David and Sharon Brooks
Drs. Susan S. and Wesley M. Brown
Mrs. Wellington R. Burt
Jean M. and Kenneth L. Casey
Leon and Heidi Cohan
Mr. and Mrs. R. G. Conger
Katharine and Jon Cosovich
Dr. and Mrs. Ronald Cresswell
Ray and Eleanor Cross
Dr. and Mrs. Preston V. Dilts, Jr.
Colby and John C. Duffendack
Mr. Greg Fenerli
Anne and James Ford
Dr. and Mrs. William L. Fox
Judy and Richard Fry
Harriet and Daniel Fusfeld
Henry and Beverly Gershowitz
Elmer G. Gilbert and Lois M. Verbrugge
William and Ruth Gilkey
Drs. Sid Gilman and Carol G. Barbour
Fred and Joyce Ginsberg
Jerry and Mary K. Gray
Seymour D. Greenstone
Carl E. and Julia H. Guldberg
Marcia and John Hall
Mr. and Mrs. Elmer F. Hamel
Harlan and Anne Hatcher
Debbie and Norman Herbert
Mr. and Mrs. William B. Holmes
Dr. and Mrs. Verne L. Hoshal, Jr.
Drs. Linda Samuelson and Joel Howell
Ralph and Del Hulett
Keki and Alice Irani
Gretchen and John Jackson
Keith and Kay Jensen
David and Sally Kennedy
Mrs. Edith Staebler Kempf
Howard King and Elizabeth Sayre-King
Barbara and Charles Krause
Mr. and Mrs. Lee E. Landes
Professor and Mrs. John C. Lee
Carolyn and Paul Lichter
Dean S. Louis, M.D.
Dr. and Mrs. Edwin L. Marcus
Jack and Joanne Martin
Larry and Rowena Matthews
Mr. and Mrs. John M. McCollum
Charlotte McGeoch
Richard and Elizabeth McLeary

Robert and Doris Melling
Dr. Barry Miller
M. Haskell and Jan Barney Newman
Marylen and Harold Oberman
Dr. and Mrs. T. N. T. Olson
Mr. R.V. Palmer
Lorraine B. Phillips
Maj. Gen. and Mrs. Robert R. Ploger
USA (ret.)
P.M. and E.W. Pollack
William and Christine Price
Elisabeth J. Rees
Dr. and Mrs. Rudolph E. Reichert
Glenda Renwick
Mr. H. Robert Reynolds
William and Katherine Ribbens
Mr. and Mrs. Stephen J. Rogers
Amnon and Prudence Rosenthal
Mrs. Bernard J. Rowan
Mrs. Richard C. Schneider
Julianne and Michael Shea
Constance Sherman
Mrs. Charles A. Sink
Mr. and Mrs. Michael J. Sprecher
Neil and Burnette Staebler
Mr. Thomas D. Steiger
Victor and Marlene Stoeffler
Mrs. John D. Stoner
Elizabeth L. Stranahan
Edward Surovell and Natalie Lacy
Dr. and Mrs. E. Thurston Thieme
Mrs. Mischa Titiev
Jonathan Trobe and Joan Lowenstein
Mr. and Mrs. Herbert H. Upton, Jr.
Joyce A. Wahr
Dr. and Mrs. Philip C. Warren
Robert O. and Darragh H. Weisman
Brymer and Ruth Williams
Thomas and Iva Wilson
Dr. and Mrs. S. B. Winslow
Mr. R. Roger and Bette F. Zauel
Martin and Nancy Zimmerman
Mr. and Mrs. Ronald G. Zollars
Pinchas Zukerman

BENEFACTOR

Armand and Marilyn Abramson
Bernard and Raquel Agranoff
Mr. and Mrs. Roy I. Albert
Judith Dow and Robert Alexander
Anne and George Amendt
Joan and David Anderson
David Andrea
Bert and Pat Armstrong
Mr and Mrs. Max K. Aupperle
Jean and Gaylord Baker
M. A. Baranowski
Mr. and Mrs. Cyril H. Barnes, Jr.
Donald C. Barnette, Jr.
Dr. and Mrs. Mason Barr, Jr.
Dr. and Mrs. Robert Bartlett
Mr. and Mrs. Raymond O. Bassler
Hermann and Hella Baumann
Neal Bedford and Gerlinda Melchiori
Henry J. Bednarz
Mary-Martha and William Beierwaltes
Dr. and Mrs. Rodney R. Bentz
Ruth Ann and Stuart J. Bergstein

Raymond and Janet Bernreuter
Mr. and Mrs. Philip C. Berry
Suzanne A. and Frederick J. Beutler
Carl and Pauline Binder
Steve Binder
James and Virginia Birchler
Elizabeth S. Bishop
Visvaldis Biss
Bob and Liz Bitterman
C. John Blankley and Maureen F. Foley
Professor H. Harlan Bloomer
Mr. and Mrs. Milford Boersma
Ruth and Jay Bolt
Sue and Bob Bonfield
Edward and Ruth Bordin
William Brashear
Ruth and Jay Bolt
Ernie and Betsy Brater
Mr. and Mrs. Lloyd Bridges
Norman and Doreen Bristol
Helen L. Brokaw
Hugh C. and Ella M. Brown
Jeannine and Robert Buchanan
Steve Buchbinder
Laurence and Valerie Bullen
Arthur and Alice Burks
Helen S. Butz
Jean W. Campbell
Charles and Martha Cannell
Mr. and Mrs. David Caplan
Bruce and Jean Carlson
Professor Brice Camahan
Mr. and Mrs. Roy A. Carpenter
Mr. and Mrs. Tsun Chang
Mr. and Mrs. Raymond S. Chase
Joan and Mark Chesler
David Chivas
Maurice and Margo Cohen
John and Penelope Collins
Kenneth Collinson
Wayne and Melinda Colquitt
Mr. William V. Coltre
Anne M. and Edward J. Comeau
Gordon and Marjorie Comfort
Alfred and Georgia Conard
M.C. Conroy
James and Constance Cook
Lolagene C. Coombs
Gage R. Cooper
Alan and Bette Cotzin
Clifford and Laura Craig
Richard and Penny Crawford
Pedro and Carol Cuatrecasas
Dean and Mrs. John D'Arms
Peter and Susan Darrow
Jane and Gawaine Dart
Dr. and Mrs. Charles Davenport
Mr. and Mrs. H. W. Davenport
Roy C. and Donna B. Davis
Ronald and Dolores Dawson
James M. Deimen
Elena and Nicholas Delbanco
Ellwood and Michele Derr
Judy and Steve Dobson
Mrs. Carl T. Doman
Dr. and Mrs. Edward F. Domino
William Gould and Katherine Keene Dow

Mr. and Mrs. Robert S. Dunham
Charles and Dorothy Dybvig
Evelyn Eccles, M.D.
Kenneth C. and Kathryn E. Eckerd
Charles and Julia Eisendrath
Emil and Joan Engel
David and Lynn Engelbert
Barry and Joyce Eisenstein
Mark and Patricia Enns
Dr. Stewart Epstein
Adele Ewell
Daniel and Judith Fall
Claudine Farrand and Daniel Moerman
Dr. and Mrs. Stefan S. Fasans
Dr. and Mrs. John A. Faulkner
Inka and David Felbeck
Dr. and Mrs. Irving Feller
Dr. James F. Filgas
Sidney and Jean Fine
Sally Fink and Stephen Josephson
Mrs. Gerald J. Fischer
Ray and Patricia Fitzgerald
Mr. and Mrs. Robben Fleming
Dr. and Mrs. George W. Ford
Phyllis Foster
Ronald and Deborah Freedman
Mr. and Mrs. Douglas D. Freeth
Victor and Marilyn G. Gallatin
Mr. and Mrs. Garnet R. Garrison
Rosemary and Wood Geist
Dr. and Mrs. Thomas Gelehrter
Beverly and Gerson Geltner
Mr. and Mrs. Clement Gill
James and Janet Gilsdorf
Paul and Anne Glendon
Melvyn and Muriel Gluckman
Dr. Alexander Gotz
Mrs. William Grabb
Ruth B. and Edward M. Gramlich
Whit and Svea Gray
Dr. and Mrs. John F. Greden
Mr. and Mrs. J. D. Green
Sharon and Lazar Greenfield
Louise and Bill Gregory
Donald and Elizabeth Gresch
John R. and Helen K. Griffith
Werner H. Grilk
Don P. Haefner and Cynthia J. Stewart
Harry L. and Mary L. Hallock
Mrs. Robert Hamilton
Mr. and Mrs. Walter F. Hamilton, Jr.
Mr. and Mrs. Charles Harris
Hugh L. Harsha
Clifford and Alice Hart
Harold and Anne L. Haugh
Douglas A. and Anne M. Hayes
Kenneth and Jeanne Heininger
Fred and Joyce Hershenson
Dr. Bertram Herzog
Herb and Dee Hildebrandt
Ms. Barbara Hill
Charles and Virginia Hills
Maurice B. Hodges
Louise Hodgson
Robert and Frances Hoffman
John and Maurita Holland
Mrs. Janet Woods Hoobler

Mr. and Mrs. Zoltan L. Horvath
 Mrs. Teresa Huang
 Mrs. V. C. Hubbs
 Edward E. Hucke
 Ray and Jude Huetteman
 Frederick G. L. Huetwell
 Mrs. George R. Hunsche
 Mr. and Mrs. David D. Hunting, Jr.
 Patricia and John Huntington
 Ann K. Irish
 Mr. and Mrs. Alan Israel
 John and Joan Jackson
 Donald E. Jahncke
 Mr. and Mrs. Emil H. Jebe
 Wallie and Janet Jeffries
 Paul D. Johnson
 Mr. and Mrs. Richard A. Jones
 James J. Judson
 Cynthia Kabza and Robert Verduyze
 Robert L. and Beatrice H. Kahn
 Mr. and Mrs. Thomas Kallewaard
 Dr. and Mrs. Mark S. Kaminski
 Elizabeth Harwood Katz
 Mr. Herbert Katz
 Mr. and Mrs. Robert Katz
 Anna M. Kauper
 Mr. and Mrs. Jacob Kellman
 Mary L. Kemme
 John B. Kennard, Jr.
 Richard and Ann Kennedy
 Emily and Ted Kennedy
 Mr. Richard E. King
 Dr. and Mrs. Costas Kleanthous
 Dr. David E. and Heidi Castleman Klein
 Mrs. Karl S. Klicka
 Hermine R. Klingler
 Mr. and Mrs. A. William Klinke II
 Carolyn and Jim Knake
 Masato and Koko Koreeda
 Dimitri and Suzanne Kosacheff
 Mr. and Mrs. Edward Kowaleski
 Christopher J. Kresge
 Alan and Jean Krisch
 John A. and Justine Krsul
 Mr. and Mrs. Leo Kulka
 Barbara and Michael Kusisto
 Mae and Arthur Lanski
 Mr. and Mrs. Henry M. Lapeza
 Dorothy and John Lapp
 George A. Lavoie
 John K. Lawrence
 Fred and Ethel Lee
 Prof. and Mrs. John C. Lee
 John and Ann Leidy
 Mr. and Mrs. Fernando S. Leon
 Professor and Mrs. Harold M. Levinson
 Allen Lichter and Karen Eve Simon
 Jody and Leo Lighthammer
 Vi-Cheng and Hsi-Yen Liu
 Harold J. Lockett, M.D.
 Mr. and Mrs. David G. Loesel
 Leslie and Susan Loomans
 Dr. Robert G. Lovell
 Robert and Pamela Ludolph
 Lawrence N. Lup
 Edward and Barbara Lynn
 Brigitte and Paul J. Maassen
 Mr. and Mrs. Stephen G. Maggio
 Virginia Mahle
 Alan and Carla Mandel
 James and Ingrid Martin
 Marilyn Mason
 Margaret Massialas
 Mr. Don Mathison
 Mrs. Lawrence Maugh
 Mr. and Mrs. Donald C. May, Jr.
 Martha Mayo and Irwin J. Goldstein
 Margaret and Harris McClamroch
 Mrs. Lester McCoy
 W. Bruce and Mary McCuaig
 Griff and Pat McDonald
 Mr. F. N. McOmber
 Martha and Dady Mehta
 Robert and Doris Melling
 Ann and Robert Meredith
 Herman and Bernice Merte, Jr.
 Mr. and Mrs. Walter Metzger
 Mr. and Mrs. Francis L. Michaels
 Dr. and Mrs. Leo J. Miedler
 Mrs. Vaden W. Miles
 H. Dean and Dolores H. Millard
 George Miller
 Jack and Carmen Miller
 James M. Miller
 Dr. and Mrs. James C. Mitchiner
 C. Richard and Sharon Molenaar
 Mr. and Mrs. Thomas Monaghan
 Dr. and Mrs. Richard A. Morin
 Dr. Eva L. Mueller
 Frederick C. Neidhardt and Germaine
 Chipault
 Ms. Lois Nelson
 Sarah Winans Newman
 Virginia and Gordon Nordby
 Frederick Odell, Jr., M.D.
 Lois and Michel Oksenberg
 Nels and Mary Olson
 Dr. and Mrs. Mark B. Orringer
 Mr. and Mrs. David W. Osler
 John and Penny Owen
 Richard and Miranda Pao
 Colonel and Mrs. Clare Passink
 Elizabeth and Beverly Payne
 Professor and Mrs. J. Raymond Pearson
 Mr. and Mrs. Frederick R. Pickard
 Mr. and Mrs. William Pierce
 Stephen and Tina Pollock
 Mr. and Mrs. L. Norris Post
 Cynthia and Roger Postmus
 Philip and Kathleen Power
 Lawrence and Ann Preuss
 Jerry Pryor
 Hugo and Sharon L. Quiroz
 Katherine R. Reeber
 Jim and Bonnie Reece
 La Vonne and Gary Reed
 Donald H. Regan and Ms. Elizabeth
 R. Axelson
 Dr. and Mrs. Richard D. Remington
 Duane and Katie Renken
 William and Mary Revelli
 Paul Rice
 Jack and Margaret Ricketts
 Tom and Sally Roach
 Stephen and Sara Rogers
 Mary R. Romig-de Young
 Robert and Joan Rosenblum
 Gay and George C. Rosenwald
 Daria A. Rothe
 Dr. Nathaniel H. Rowe
 Theodore and Joan Sachs
 Jerome and Lee Ann Salle
 Dr. and Mrs. Albert J. Sayed
 Mr. and Mrs. Allan Schenck
 Dr. and Mrs. John E. Schenk
 Andy Achenbaum and Mary Schieve
 Dr. and Mrs. David W. Schmidt
 Mr. and Mrs. Mark Schmidt
 G. M. and M.F. Schmit
 Charles and Meeyung Schmitter
 Charlene and Carl Schmolt
 Dr. and Mrs. David Schottenfeld
 Hollis and Martha Showalter
 Drs. David and Monica Scheingart
 Mr. and Mrs. Edwin Schultz
 John J. H. Schwarz, M.D.
 Harriet and Marvin Selin
 Janet C. Sell
 Richard and Susan Shackson
 Michael and Janet Shatusky
 Victoria Sheagren
 George and Gladys Shirley
 Hollis and Martha Showalter
 Edward and Marilyn Sichter
 George and Helen Siedel
 Irma J. Sklenar and Robert John Sklenar
 Mr. and Mrs. Carl R. Smith
 Mr. and Mrs. Robert W. Smith
 Dr. and Mrs. William R. Solomon
 Renate and Richard Soulen
 Neil and Burnette Staebler
 E. Lloyd and Theodore J. St. Antoine
 Betty M. Stark
 Mrs. Ralph Steffek
 Kenneth and Edith Stephanz
 Dr. and Mrs. Stanley Strasius
 James R. and Jeraldine M. Suits
 Mr. and Mrs. J. Wilner Sundelson
 Steven and Mary Swanson
 Dr. Jean K. Takeuchi
 Gerald W. and Susan J. Tarpley
 Mr. and Mrs. Robert M. Teeter
 James L. and Ann Telfer
 Scott Bennett Terrill
 Richard and Yvonne Teske
 George and Mary Tewksbury
 Mary H. Thieme
 John and Ann Treat
 Paul and Barbara Trudgen
 Mr. and Mrs. Stanley Turner
 Mr. and Mrs. Alvan Uhle
 Dr. and Mrs. John F. Ullrich
 Donald and Wendy Urquhart
 Madeleine Vallier
 Jack and Marilyn van der Velde
 Bram and Lia Van Leer
 Fred and Carole van Reesema
 Dr. Detlof von Berg
 Warren H. and Florence S. Wagner
 Bruce and Raven Wallace
 Karl and Karen Weick

Lawrence A. Weis and Sheila Johnson
Angela and Lyndon Welch
Mr. and Mrs. B. Joseph White
Janet F. White
Dr. and Mrs. Max Wicha
Marion T. Wirick
Dr. Grant J. Withey
Noreen Ferris and Mark Wolcott
Dr. and Mrs. Ira S. Wollner
Colonel and Mrs. Ernest A.H. Woodman
Richard and Dixie Woods
Patricia A. Woodworth
Mr. and Mrs. A. C. Wooll
Stan and Pris Woollams
Charles R. and Jean L. Wright
Phyllis Wright
Dr. and Mrs. Clyde Wu
Mr. Donald W. Wyche
Leslie and Tadataka Yamada
Mr. and Mrs. A. Michael Young
Mr. and Mrs. Edwin H. Young

PATRON

Victor Adamo
Barbara and Jim Adams
Tim and Leah Adams
Mr. and Mrs. Gordon E. Allardyce
Forrest Alter
Mr. and Mrs. David Aminoff
Harlene and Henry Appelman
Dr. and Mrs. Allan A. Ash
Nancy and Eric M. Aupperle
Dr. and Mrs. Noyes L. Avery
Shirley and Donald Axon
Jerald and Virginia Bachman
Robert L. Baird
James R. and Lisa Baker
Barbara and Daniel Balbach
Ms. Gwendolyn L. Ball
Andrea and Simon Bare
Gail Davis Barnes
Dr. Ruth M. Barnard
Mr. and Mrs. Mark Bartholomy
Gail Bauer
Dr. and Mrs. Jere M. Bauer
Susan Bay
Mr. Ralph Beebe
Robert B. Beers
Soly S. Bencuya
Harry and Betty Benford
Ronald and Linda Benson
Helen V. Berg
Reuben and Barbara Levin Bergman
Mr. and Mrs. S.E. Berki
Dr. and Mrs. Gerald Berlin
Mr. and Mrs. Mark A. Bernhardt
Dr. and Mrs. John C. Billelo
Mr. and Mrs. Guido A. Binda
Joan and Howard Binkow
John E. Bloom
Dr. and Mrs. Lynn W. Blunt
Beverly J. Bole
Robert and Sharon Bordeau
Gil and Mona Borlaza
Thomas Brewer
Caesar and Luan Briefer
Mr. and Mrs. Robert P. Briggs

Dr. and Mrs. William D. Briggs
Judge Kenneth Bronson
Dr. and Mrs. Arch Brown
Donald R. and June C. Brown
Ms. Michelle A. Brown
Morton B. and Raya Brown
Sylvia C. Brown
Dr. Joachim Bruhn
Mrs. Webster Brumbaugh
John H. and Barbara Everitt Bryant
Mrs. Hempstead S. Bull
Sibyl Burling
Marjorie H. Burnell
Mr. and Mrs. Richard J. Burstein
Marilyn Buss
Letitia J. Byrd
Mrs. Theodore Cage
Dr. and Mrs. Darrell A. Campbell
Ms. Margot Campos
Brad Canale
Isabelle Carduner
Jim and Priscilla Carlson
Jeannette and Robert I. Carr
Dr. and Mrs. James T. Cassidy
Mary and David Chambers
Ms. Kathran Chan
Mr. and Mrs. Nicholas G. Chapekis, Sr.
J. Wehrey and Patricia Chapman
Ms. Linda Chatters
Jean Chenoweth
Dr. Kyung and Young Cho
Prof. and Mrs. Donald Cleveland
Eric Coates
Mrs. Bennett J. Cohen
Blanche Cohen
Howard and Vivian Cole
Mr. Donald A. Collins
Jeffrey and Cynthia Colton
Mr. and Mrs. L. Thomas Conlin
Sandra S. Connellan
Bill and Bonnie Coombe
Robert and Charlotte Copp
Dr. and Mrs. Arnold G. Coran
Marjorie A. Cramer
Dr. Mary C. Crichton
Mr. and Mrs. Harry Cross
Jean and James I. Crump
Roger A. and Elizabeth E. Cunningham
Audrey and Edward Curtis
Mr. Orien Dalley
Mr. and Mrs. Robert Damschroder
Paul and Mary Ellen Danos
Mr. and Mrs. Arthur W. Davidge
James A. Davies
Dr. and Mrs. James H. Davis
Philip C. Davis
Ms. Pamela M. Day
Jean and John Debbink
Ferol and H.T. Decker
Dr. and Mrs. Raymond F. Decker
Mildred F. Denecke
Robert K. and Annie C. Denison
Benning and Elizabeth Dexter
Robert and Linda Diebold, Jr.
Nelson and Eleanor Dingle
Ms. Della DiPietro
Douglas and Ruth Doane

Dr. and Mrs. Edward R. Doezema
Thomas and Esther Donahue
Dr. and Mrs. Steven Donn
Dick and Jane Dorr
Eugene and Elizabeth Douvan
Roland and Diane Drayson
Allan and Cecilia Dreyfuss
Dr. and Mrs. Howard V. Dubin
Nancy Griffin DuBois
Ivan and Betty Anne Duff
Rhetaugh G. Dumas
Richard F. Dunn
Morgan and Sally Edwards
Dr. Alan S. Eiser
Judge and Mrs. S.J. Elden
Mrs. Genevieve Ely
Mackenzie and Marcia Endo
Mr. William Ensminger
Dr. and Mrs. J.L. Epstein
Mr. and Mrs. Fred Erb
Mr. and Mrs. Donald Eschman
Joel L. Evilsizer
Karen and Mark Falahee
Dr. and Mrs. Harvey Falit
Michael and Ann Feeney
Dr. and Mrs. George J. Feldman
Phil and Phyllis Fellin
Mrs. Carl H. Fischer
Charles and Mary Jane Fisher
Mr. and Mrs. Melvin J. Flamenbaum
Stephen and Suzanne Fleming
Jennifer and Guillermo Flores
Mr. and Mrs. Ernest Fontheim
David A. Fox and Paula L. Bockenstedt
Mr. and Mrs. Howard P. Fox
Joanna and Richard Friedman
Gail Fromes
Philip and Renee Frost
Bart and Fran Frueh
Mr. Mack Fuhrer
Rebecca and Bruce Gaffney
Lourdes and Otto Gago
Frances M. Gardner
Mrs. Don Gargaro
Stanley and Priscilla Gam
Professor and Mrs. David M. Gates
Mr. and Mrs. Robert C. Gatzke
Helen Gay
James and Jane M. Gay
Michael Gerstenberger
Ronald Gibala and Janice Grichor
Allan Gibbard and Beth Genne
Dr. and Mrs. Paul W. Gikas
Mr. and Mrs. Robert Gilbert
Robert and Barbara Gockel
Mrs. Eszter Gombosi
Jesse E. and Anitra Gordon
Keiko Goto
Adon A. Gordus
Vivian Sosna Gottlieb and Norm Gottlieb
Elizabeth Needham Graham
Bob and Lisa Green
Dr. and Mrs. Leslie M. Green
Shirley Green
Daphne and Raymond Grew
Susan and Mark Griffin
Mr. and Mrs. James R. Griffith

Dr. Howard B. Gutstein
 James and Veronica Haines
 George N. and Katherine C. Hall
 Mrs. William Halsted
 Margo Halsted
 Stephen G. and Mary Anna Harper
 Susan R. Harris
 Walter and Dianne Harrison
 Robert and Sherry Hatcher
 Larry and Jean Hauptman
 Kathleen L. Hawkins
 William F. Hayden
 Mr. and Mrs. Robert L. Hayes
 Prof. Loma Haywood
 John Henkel and Jacqueline Stearns
 Margaret Martin Hermel
 Mr. and Mrs. E.A. Hershey
 Ms. Sandra L. Higgins
 Mr. and Mrs. Thomas Hilbish
 Dr. and Mrs. W. A. Hiltner
 John and Florence Hinman
 Lynn L. Hobbs
 Julian and Diane Hoff
 Mr. Matthew C. Hoffmann
 Frederic and Elizabeth House
 Margaret Houser
 Graham and Mary Jean Hovey
 Sally Howe
 Harry and Ruth Huff
 Dr. and Mrs. James F. Huffman
 Ronald and Gaye Humphrey
 Ann D. Hungerman
 Donald and Lynn Hupe
 Mr. and Mrs. Russell L. Hurst
 Dr. Dorothy A. Huskey
 Robert B. and Virginia A. Ingling
 Perry Elizabeth Irish
 Mitzi and Sam Irwin
 Esther Ann Jackson
 Mr. and Mrs. Z. J. Jania
 John M. Jenks
 Jean and Kenneth Jochim
 Mr. and Mrs. Donald L. Johnson
 Mr. and Mrs. Paul G. Johnson
 John and Linda K. Jonides
 Mr. and Mrs. Joseph Juett
 Dr. Stevo and Mrs. Susan Julius
 Mr. and Mrs. Wilfred Kaplan
 Alex and Phyllis Kato
 Suzanne Kaufman
 Mr. Hiroki Kawata
 Mr. John B. Kennard, Sr.
 Thomas E. Kenney
 Robert I. Keyes
 Dr. and Mrs. Paul Kileny
 Mr. and Mrs. Charles E. Kimmel
 John R. Alexander and Ms. Carolyn King
 Rhea and Leslie Kish
 Mr. and Mrs. Arthur W. Klinke
 Mr. John Koenig
 Mr. and Mrs. Joseph J. Kokoszka
 Jerome and Geraldine Koupal
 Alexander Krezel
 Mr. and Mrs. Samuel Krimm
 Mr. and Mrs. Arnold H. Kuethe
 Mr. and Mrs. George H. Kuper
 Rayburn L. Howland and Katherine E. Kurtz
 Dr. and Mrs. Richard A. Kutcipal
 Dr. and Mrs. Bert La Du, Jr.
 Dr. Barbara J. LaHood and Archie Cameron Brown
 Mr. and Mrs. Seymour R. Lampert
 LaVonne Lang
 Dr. Donald and Lois Largo
 Mr. and Mrs. Philip Lawler
 Robert and Leslie Lazzerein
 Chuck and Linda Leahy
 Mr. and Mrs. C. F. Lehmann
 Mr. and Mrs. William C. Lighthall
 Lawrence B. Lindemer
 Dr. and Mrs. Stephen Loftus
 Mr. and Mrs. E. Daniel Long
 Peter A. Long
 Luisa Lopez-Grigera
 Florian A. Lux
 Ms. Marcy MacMahan
 Mark Mahlberg
 Suzanne S. and Jay J. Mahler
 Claire and Richard Malvin
 Melvin and Jean Manis
 George J. Marketos
 Rhoda and William Martel
 Robert S. and Margaret R. Martin
 Dr. and Mrs. Josip Matovinovic
 Elaine J. McFadden
 John McGowan
 Mr. and Mrs. W. J. McKeachie
 Professor and Mrs. Gustav Meier
 Jerry and Rhona Meislik
 Mr. and Mrs. Warren A. Merchant
 Eva and Alfred Meyer
 Don and Lee Meyer
 Mr. Gordon R. Metzger
 Mr. and Mrs. A.S. Mignery, Jr.
 Myma and Newell Miller
 Timothy and Patricia Miller
 Kristine Miller-Pinti
 John and Dorothy Mohler
 Arnold and Gail Morawa
 Mr. James N. Morgan
 Dr. and Mrs. George W. Morley
 Miss Anne Moroun
 Rona and Cyril Moscow
 Mary Moss
 Trevor Mudge and Janet Van Valkenburg
 Ms. Anna Hillenius Muller
 Dr. Dorothy V. Mummery
 John W. and Ruth A. Munger
 Gavin Eadie and Barbara Murphy
 Dr. and Mrs. Gunder A. Myran
 Rosemarie Nagel
 Dr. and Mrs. James V. Neel
 Wallace E. Newcomb
 George J. Nichols
 Mr. and Mrs. Marvin Niehuss
 Mrs. A. Geoffrey Norman
 Mr. and Mrs. Richard S. Nottingham
 Garrick Ohlsson
 Bill and Marguerite Oliver
 Mr. and Mrs. J. L. Oncley
 Helen L. Osterlin
 Fred and Barbara Outwater
 William and Janet Paige
 Mrs. George L. Palmer
 Dr. and Mrs. Sujit K. Pandit
 Donna D. Park
 David and Linda Parr
 Mr. and Mrs. Brian P. Patchen
 Ara and Shirley Paul
 Ruth and Joe Payne
 Mr. Sumer Pek
 Roy Penchansky and Elizabeth W. Bates
 Thomas V. and Stephanie Peterson
 Mr. and Mrs. Albert F. Petrosky
 Mr. and Mrs. Leo Petrosky
 Mr. and Mrs. D. Maynard Phelps
 Jim and Julie Phelps
 Mr. and Mrs. Robert C. Pierce
 Sharon Pignaneli
 Dr. and Mrs. Bertram Pitt
 Donald and Evonne Plantinga
 Mr. and Mrs. Robert H. Plummer
 Senator Lana and Professor Henry Pollack
 Susan Pollay and Bruce Watkins
 Norman and Anna Mary Postma
 Mary and Robert Pratt
 Bill and Diana Pratt
 Margaret Prendergast
 Mrs. Dorothy M. Price
 Ernst Pulgram
 Mrs. Tad Rae
 Laurie A. and Haran Craig Rashes
 Susan L. Rasmussen
 William and Mary Rave
 Dr. and Mrs. Robert Ravitscher
 Russell and Nancy Reed
 Dr. and Mrs. James W. Reese
 Dorothy R. and Stanislaw Rehak
 Caroline Rehberg
 Mr. and Mrs. G. Robert Richards
 Mr. and Mrs. F. E. Richart
 Frances Greer Riley
 M. A. Ritter
 Peter Roberts and Shirley Casebolt
 James and Marietta Robinson
 Willard and Mary Ann Rodgers
 Mary K. Roeser
 Dr. and Mrs. Raymond Rose
 Dr. and Mrs. John Rosella
 Gustave and Jacqueline Rosseels
 Charles and Anne Rubin
 George and Matilda Rubin
 Jonathan Rubin and Gretta Spier
 Dolores and Thomas E. Ryan
 Mitchell and Carole Rycus
 John and Reda Santinga
 Herbert E. and Patricia Sawin, II
 Mr. Donald Schmaltz
 Courtland and Inga Schmidt
 Drs. Robert J. and Franziska I. Schoenfeld
 Gerald and Sharon Schreiber
 Professor Thomas J. and Ann Sneed
 Schriber
 Marshall S. Schuster, D.O.
 Ms. Patricia H. Schwartz
 Mary and John Sedlander
 Sandro Segalini
 Leonard and Sylvia Segel
 Suzanne M. Selig

Dr. and Mrs. J.N. Shanberge
Stuart E. Sheill
Howard and Aliza Shevrin
Thomas and Jean Shope
Dr. Douglas and Barbara Siders
James Sidor, C.P.A.
Bruce M. Siegan
Ms. Ruth Siegel
Kenneth and Margaret Buttenheim Silk
Terry and Dorit Silver
Gene and Alida Silverman
Stephen Skelley
Allan and Alene Smith
George and Mary Elizabeth Smith
Dr. and Mrs. M. W. Smith
Cynthia J. Sorensen
Mrs. Jay Spaulding
Mr. and Mrs. H.W. Spendlove
Mrs. Alfred F. Staeb
Ed Stein and Pat McCune
Eric and Virginia E. Stein
Joanne Stein
Dr. and Mrs. Alan Steiss
Diane Stevens
James L. Stoddard
Ellen M. Strand and Dennis C. Regan
Mrs. William H. Stubbins
DeVere and Zita Sturm
Alfred S. and Selma Sussman
Brian and Lee Talbot
Frank and Carolyn Tarzia
Eva and Sam Taylor
Edgar and Mary Lou Thibodeau
Catherine and Norman Thoburn
Edwin J. Thomas
Joseph Thompson
J. Mills Thornton III
Dr. and Mrs. Robert F. Todd
Dr. and Mrs. Merlin C. Townley
Sarah Trinkaus
Penny and John Tropman
Irene Truesdell
Dr. and Mrs. Vincent J. Turcotte
Janet L. Turner
Andrew T. Turrisi III
Mr. George Unterburger
Rebecca W. Van Dyke
Barbara and Henry Vanderploeg
Edie and Paul Vegoda
Mrs. Durwell Vetter
Isabel M. Vitale
Mr. and Mrs. Theodore R. Vogt
Joe and Eleanor Voldrich
Cindy and Christopher Wackerman
Richard Walinski
Gregory A. Walker
Eric and Sherry Warden
Dr. and Mrs. J. Wardner
Charles and Ruth Watts
Robin and Harvey Wax
Christine Webb
Ju Lin Wei
Mr. and Mrs. Stanfield Wells, Jr.
Dr. Steven Werns
P., M., J., C., and A. Westen
Mrs. L.K. White
Clara G. Whiting

Carroll and Dorothy Williams
Father Francis E. Williams
Dr. and Mrs. Francis S. Williams
John Troy Williams
Ms. Diane Willis
Mrs. Elizabeth Wilson
Mr. and Mrs. E. Winter
Professor and Mrs. Charles Witke
Charlotte Wolfe
Israel and Fay Woronoff
Miss Linda L. Wotring
David M.H. Wu
Mary Grace and Tom York
Christine Young and Alex Halliday
Martin and Gertrude Zeile
Gail and David Zuk

DONOR

Richard and Marie Abbott
Judge and Mrs. William F. Ager
Michihiko and Hiroko Akiyama
Ms. Karen Svendsen Al-Saadi
Mrs. John Alexander
Mr. and Mrs. Harold F. Allen
James and Catherine Allen
Pamela Amidon
Mr. and Mrs. Charles T. Anderson
Mr. Edwin Anderson
James and Kathleen Andonian
Dr. Lyle and Shirley Andress
Ms. Lynn Anslow
Ms. Carolyne Anthony
Tammy K. Antonucci
Donna and Todd Anuskiewicz
Mary C. Arbour
Jill B. and Thomas J. Archambeau, M.D.
Thomas J. and Mary E. Armstrong
Mr. and Mrs. Lawrence E. Amett
Eleanore M. Amison
Mr. and Mrs. Arthur J. Ashe
Mr. and Mrs. Dan E. Atkins III
Doris E. Attaway
Mr. David August
John and Rosemary Austgen
Michael Avsharian
Charlene and Eugene Axelrod
Jonathan and Marlene Ayers
Professor and Mrs. Reeve Bailey
Peter and Paulett Banks
Gary N. Barber
Ms. Karla Barber
Norman E. and Mary E. Barnett
Gary W. Baron
Marjorie and Loren Barritt
John W. H. Bartholomew
Leslie Bassett
Harold F. Baut
Gilbert and Mary Ellen Bazil
Florence N. Beach
Billie and Bill Bell
Mrs. Walter Benenson
Alice Benson
Mr. and Mrs. Ib Bentzen-Bilkvist
Dr. Rosemary R. Berardi
Mr. Abraham Berman
Gene and Kay Berrodin
Ms. Margaret C. Bignall

Claire Billingham
William and Ilene Birge
Ronald and Nancy Bishop
Kathleen Crispell Blackmer
Art and Berry Blair
Marshall and Linda Blondy
Greta L. Bocciardi
Dr. and Mrs. David Bohr
C. Richard and Patricia S. Boland
Lee Bollinger and Jean Magnano Bollinger
Mark D. Bomia
Robert and Shirley Boone
Dr. and Mrs. Morris Bornstein
David W. Bostian
John D. and M. Leora Bowden
Robert and Jan Bower
Mr. and Mrs. Bruce M. Bowman
Ken and Mary Bowman
Drs. Laurence and Grace Boxer
Dr. Robert R. Brewster
Mr. and Mrs. Dale E. Briggs
Dr. Paulette Bromberg
Razelle and George Brooks
William M. and Sandra Broucek
Mr. and Mrs. Olin L. Browder
Fred and Julia Buesser
Sarah M. Burns
Ruth Busch
Lucile C. Buta
Dan and Virginia Butler
Dr. and Mrs. Robert S. Butsch
Helen S. Butz
Susan and Oliver Cameron
Dr. Ruth Cantieny
Ms. Susan Cares
Philip C. Carpenter
Mr. Douglass L. Carson
Maggie Cavallaro
Jack Cederquist
Joanne C. Ceru
Mr. and Mrs. J.P. Chandler
Bill and Susan Chandler
Daniel and Linda Chapman
Cecelia Chernick
Mr. Chi Cheung
Dr. and Mrs. Alfred Ching
Soon and Kwang Cho
Mr. and Mrs. R. A. Choate
Mr. Jong-Wang Chow
Edward and Rebecca Chudacoff
Patty Clare
John and Carole Clark
Joseph F. Clayton
Earl Clemens
Irene Cleveland
Mr. and Mrs. R. N. Coe
Shirley A. Coe
Dorothy Burke Coffey
Jan and Carl Cohen
Hilary and Michael Cohen
Catherine M. Collins
Peter and Katherine Cooley
Dr. and Mrs. William W. Coon
David and Myrtle Cox
Mary Sue Cox
Ms. Shelley Winters Cranmer
Mary Crawford

Geoffrey L. Crosbie
 Ms. Julia K. Cucuro
 Sally A. Cushing
 Mr. and Mrs. David G. Cylkowski
 Marylee Dalton
 David C. Darr
 Robert M. Dascola
 Ed and Ellie Davidson
 Laning R. Davidson, M.D.
 Ruth and Bruce Davis
 Dr. and Mrs. Leonard E. Davis
 Roger E. Davis
 David and Kay Dawson
 Dean and Cindy Degalan
 Ms. Carol DeJong
 Raymond A. Detter
 Kenneth and Judith DeWoskin
 Norma Diamond
 Carolin and Macdonald Dick
 Dr. Michael DiPietro and Alice Fishman
 Heather and Stuart Dombey
 Father Timothy J. Dombrowski
 Ruth P. Dorr
 Mr. and Mrs. Harry Dreffs
 Ms. Jane Dutton
 Frances E. Dyer
 Mr. and Mrs. William G. Earle
 Dwight and Mary Ellen Eckler
 Ruth Eckstein
 Dr. and Mrs. Irwin Eisenfeld
 Mr. Barry Eisenstein
 David A. Eklund
 Sol and Judith Elkin
 Dr. and Mrs. Charles Ellis
 Ethel and Sheldon Ellis
 James H. Ellis and Jean A. Lawton
 Jack and Wilma Elzay
 Mr. and Mrs. H. Michael Endres
 Mr. Paul Epstein
 Mr. and Mrs. Glen Erickson
 Mr. and Mrs. Ronald Erlich
 Adeline S. Everhardus
 Ms. Joyce Ewing
 Mary K. Fancher
 Pierce H. Farrar
 Mr. and Mrs. John Feikens
 Barbara L. Ferguson
 Mr. Dennis Fernly
 Kathryn Ferriell
 Mr. and Mrs. Melvin Fiegel
 Carol and Aaron Finerman
 Clarisse Finkbeiner
 Mr. and Mrs. Charles R. Fisher
 Mr. and Mrs. M. Scott Fisher
 Mrs. Selma Fisher
 Susan R. Fisher and John W. Waidley
 Winifred Fisher
 Linda and Thomas Fitzgerald
 Mr. James H. Flinn, Jr.
 Peter and Carol Flintoft
 George and Kathryn Foltz
 Ms. Andrea Foote
 Ms. Kay Ford
 Mrs. Violet M. Ford
 Mr. and Mrs. William C. Forgacs
 Mr. and Mrs. Leo Fox
 Mr. and Mrs. Larry Frank
 Mr. and Mrs. Jarvis Franzblau
 Selma and Newton L. Freedman
 Julia M. Freer
 Richard and Joann Freethy
 Otto W. and Helga B. Freitag
 Vivian H. French
 Elizabeth and Keith Gadway
 Jane Galantowicz
 Marjorie and Arthur Gallagher
 Mr. and Mrs. George J. Gallas
 Mr. and Mrs. Bernard A. Galler
 Elisabeth Garay
 Mrs. Shirley H. Garland
 Ms. Marie Garlick
 Mr. and Mrs. Garnet R. Garrison
 Janet and Charles Garvin
 Ms. Myrtle Gasilo
 Drs. Steve Geiringer and Karen Bantel
 Nick and Sharon Genova
 Mr. and Mrs. Matthew J. Germane
 Mr. Mark Gersovitz
 W. Scott Gerstenberger and Elizabeth A. Sweet
 David and Helene Gidley
 Elida F. Giles
 Mrs. Sidney F. Giles
 John Gilstorf
 Dr. and Mrs. F.B. Glaser
 Dr. David W. Gnegy
 Mr. Albert L. Goldberg
 Ed and Mona Goldman
 Howard Goldman
 Anita and Al Goldstein
 Steve and Nancy Goldstein
 Audrey Goman
 Mr. and Mrs. Mitchell A. Goodkin
 Lana Gore
 William A. and Jean Gosling
 Naomi Gottlieb
 Sheryl T. and Todd W. Grant
 Dr. and Mrs. Serge Gratch
 Robert H. and Judith K. Gray
 Bertha M. Green
 Suzanne and Frank Grefsheim
 G. Robinson and Ann Gregory
 Mr. and Mrs. James J. Gribble
 David and June Griffenhagen
 Laurie Gross
 Lawrence and Esta Grossman
 Mary and Bob Grover
 Paul L. Gruchala
 Frederick and Iris Gruhl
 Cyril Grum and Cathy Strachan
 Doris and Harvey Guthrie
 Ms. Mary Haab
 Dorothy S. Haake
 Mr. Amiya K. Hajra
 Barbara J. Hall
 Marc and Leslie Halman
 Mr. and Mrs. Kirk Hamilton
 Frances Hamman
 Mrs. Frederick G. Hammitt
 Dora E. Hampel
 David and Patricia Hanna
 Mrs. Olive Hansen
 Mr. and Mrs. L. T. Harbeck
 Ken Harbour
 Laurelynn and George Harris
 Mr. and Mrs. Robert Harris
 Ms. Dorothy J. Hart
 M. Jean Harter
 Mr. William G. Harter
 David and Pat Haskell
 Elizabeth C. Hassinen
 Carolyn M. Carty and Thomas H. Haug
 Mr. and Mrs. Robert F. Haugh
 Professor Jeffrey Heath
 Albert E. Heins
 Mr. and Mrs. Jeffrey J. Helmick
 Norma and Richard Henderson
 Karl P. Henkel
 Ralph and Ada Herbert
 Jolene and Albert Hermalin
 Mr. and Mrs. Ramon R. Hernandez
 Ms. Mallory Hiatt
 David and Barbara Hill
 Peter Hinman and Elizabeth Young
 Drs. John E. Billi and Sheryl Hirsch
 Jane and Dick Hoerner
 Mr. Timothy Hofer
 Carol Hohnke
 Ken and Joyce Holmes
 Jeanette Holtman
 Eugene and Joan Homeister
 Penelope Hommel and Steven Pepe
 Mr. and Mrs. Harry H. Hopkins
 Bert G. Hornback
 Dr. Nancy Houk
 James S. House and Wendy Fisher House
 Kenneth Hulsing
 Ms. Jean Huneke
 Raymon and Sylvia Hunt
 Eileen and Saul Hymans
 Ilyas Iliya
 Ms. Juko Imai
 Mr. and Mrs. S. A. Imredy
 Mrs. Jeane Van Deest Irwin
 Mr. Hiroshi Kan Itoh
 Mr. and Mrs. Jeff Jackson
 Mr. and Mrs. Roger E. Jacobi
 Richard Jaeger
 Ms. Jerri M. James
 Mr. and Mrs. Jerome Jelinek
 Mrs. Shwujieng Jeng
 James C. and Baiba G. Jensen
 Russell E. Jenter
 Mr. Kurt Jeppesen
 Herbert and Susan Johe
 Elizabeth Johnson
 James S. Johnson
 Mr. James Johnston
 Anne Hough Jones
 Elizabeth M. Jones
 Mr. and Mrs. Ernest A. Jones
 Ms. Susan Jordan
 Glenna M. Joyce
 Dominic M. Justewicz
 Ms. Mary B. Kahn
 Lois and Gordon Kane
 Naomi M. Kane
 Mr. and Mrs. Irving Kao
 Julian M. Kaplin
 Mr. and Mrs. Richard L. Kaplin
 Mr. and Mrs. Franklin H. Kastle

Ralph and Deborah Katz
Samuel H. Katz
Ms. Elizabeth Kaufman
Dr. J. Kaufman
Mr. Richard Keep
Dr. and Mrs. Robert C. Kelsch
Roberta Keniston
Ms. Carol Kennedy
Frank and Patricia Kennedy
David J. and JoAnn Z. Keosaian
Esther G. Kerr
Mr. and Mrs. Donald Kiel
Mr. Tim Killackey
Jeanne M. Kin
Mr and Mrs. William H. Kincaid
Donald R. Kinder
Ms. John R. Alexander and Ms. Carolyn King
V. King
Tom and Connie Kinnear
Klair H. Kissel
Steve T. Koeff, M.D.
Seymour Koenigsberg
Mr. Alan L. Knaus
Glenn and Shirley Knudsvig
Fumio Komatsu
Sylvan and Elizabeth Humes Komblum
Mr. Chris Korow
William and Michele Kotowicz
Jean and Dick Kraft
Ms. Sale Kuusik
James and Karen Lahey
Mrs. Jane F. Laird
Alice and Henry Landau
Dr. Stephen G. Landau
Dr. Raymond Landes
Mr. and Mrs. Charles Lane
Myroslav Lapchak
Joan and Charles Larson
Richard and Neva Larson
Carl F. and Ann L. LaRue
Edward W. Lauer
Ted and Wendy Lawrence
David Lebenbom
Ms. Kathy Lee
Paul and Ruth Lehman
Ms. Sue Leong
Dr. David J. Lieberman
Mr. John H. Lillie
Dr. and Mrs. Frederick S. Lim
Dr. and Mrs. Richard Lineback
Nathan and Eleanor Lipson
Mikhail Livshits
Naomi E. Lohr
Jane Lombard
Mr. and Mrs. Richard S. Lord
Mr. Jack Losee
Lawrence and Susan Loucka
Mr. Jack Losee
Mr. and Mrs. Bruce Loughry
Charles and Elsie Lovelace
Paul and Donna Lowry
Lynn Bennett Luckenbach
John and Jane Lumm
Fran Lyman
John J. Lynch
William and Judith Lynn

Dr. and Mrs. James C. MacBain
Mary Egan MacDowell
Susan E. Macias
Mr. and Mrs. Alan B. Macnee
Ruth MacRae
Rev. and Mrs. Philip Rodgers Magee
Gertrude Maglott
Nancy Magnani and Kenneth C. Hass
Ella A. Mahnken
Dr. Karl Malcolm
Mikhail Malkin
Mr. and Mrs. D. H. Malloure
Kathleen Beck and Frank Maly
Ms. Patricia H. Mansfield
Nancy and Philip Margolis
Geraldine and Sheldon Markel
Mrs. Ruth Sizer Marshall
Ken Marushige
Cmdr. and Mrs. Timothy H. Marvin
Marion T. Marzolf
H.L. Mason
Larry and Rowena Matthews
Mary and Chandler Matthews
E. Mayer
Josephine C. Mazzolini
Ms. Marcia McBrien
Margaret McCarthy
Ernest and Adele McCarus
David G. McConnell
David and Claire McCubbrey
Norman E. and Mary McIver
Donald and Elizabeth McNair
Mr. Edward A. Mehler
Helen F. Meranda
Rev. Harold L. Merchant, D.D.
James and Kristry Meretta
Alan G. and Sally Merten
Dr. Henry D. Messer and Mr. Carl A. House
Valerie D. Meyer
Mr. and Mrs. Herbert M. Meyers
Mr. Victor L. Meyers
Dr. William P. Mies
William M. and Joan E. Mikkelsen
Dr. and Mrs. Josef M. Miller
Prof. Murray and Yetta R. Miller
Madolia E. Mills
Ms. Eileen Moloney
Van C. Momon, Jr. M.D.
Ms. Mary K. Monteith
Mr. and Mrs. Milton E. Moore
Rosalie E. Moore
Kittie Berger Morelock
Robert Mrozinski
Mrs. Erwin Muehlig
Dr. and Mrs. Bernhard Muller
Lora G. Myers
Linda M. Nadeau
Yoshiko Nagamatsu
Louis and Julie Nagel
Ruth Nagler
Mr. M. P. Narayanan
Carolyn E. Navarre
Mrs. Elizabeth R. Neidhardt
Mr. and Mrs. James K. Newton
Richard and Susan Nisbett
Ms. Laura Nitzberg

Bonnie and Andrew Nolan
James A. Kelly and Mariam C. Noland
Ms. Judith A. Nowack
Mr. Frank Okoh
Maury Okun
Zibby and Robert Oneal
Lillian G. Ostrand
Mr. and Mrs. James R. Packard
Viola Goin Palmer
Mr. and Mrs. George Palty
Janet Parkes
Mr. Michael S. Parmacek
Evans and Charlene Parrott
Mr. and Mrs. William A. Paton, Jr.
Sally S. Patten
Richard C. Patterson
Mr. William R. Paulson
P. D. Pawelski
Anita H. Payne
Dr. and Mrs. M. Joseph Pearson
Ms. Katie Pelz-Davis
Solti Peng
Susan A. Perry
Mr. Ellsworth M. Peterson
David and Marilyn Pettigrove
Drs. Joseph and Sharon Petty
Dr. and Mrs. James F. Pikulski
Mrs. Patricia Pitts
Martin A. Podolsky
Mr. Albert M. Polimar
Mr. and Mrs. Gerald Powrozek
Mrs. Anthony Preketes
Jacob M. Price
John and Nancy Prince
Julian and Evelyn Prince
Mr. Bradley Pritts
G. Robina Quale
Marijean Quigley
Marshall E. Quinn
Steve and Ellen Ramsburgh
Alfred and Jacqueline Raphelson
Dr. and Mrs. Robert Rapp
Ethel Rathbun
David William Rau
Keith and Beth Reed
Anthony Reffells
Walter A. Reichart
Jim and Linda Reinhardt
Stephen P. Reinhart
Alice Rhodes
Mary K. Riley
Constance Rinehart
Bill Roberts
Doug and Kathy Roberts
Dave and Joan Robinson
Jay and Machree Robinson
Jonathan Rodgers
Tom and Junko Roehl
Richard and Susan Rogel
Dr. and Mrs. Leslie W. Rogers
Minnie and M. Minette Rollins
John H. Romani
Harry A. Rommel
Ms. Jane A. Ronca-Washburn
Bob and Jean Rorke
Milton and Marlene Rosenbaum
William and Elinor Rosenberg

Dr. and Mrs. David W. Roush
Christopher Rothko
Mr. and Mrs. Roger Rudd
Mabel E. Rugen
Mr. and Mrs. Edward Rupke
John Paul Rutherford
James and Ellen Saalberg
Mr. Chris Sackellares
Mr. Kiyonori Sakakibara
Dr. Don and Marlene Salberg
Sandra and Doyle Samons
Mirian and Fred Samson
Marjorie and William Sandy
Ms. Elizabeth M. Savage
Dr. and Mrs. George Sayre
Mr. and Mrs. Alan Schall
Mr. Kurt Schmidt
Lara Schmidt
Mr. Michael Schrock
Sue Schroeder
Mary L. Schuette
Albert and Susan Schultz
Annette Schultz
Geraldine Seeback
Mr. Richard Seid
Handan Selamoglu
Gerda Seligson
Mr. and Mrs. Kirtikant Shah
Matthew D. Shapiro and Susan L. Garetz
David and Elvera Shappirio
Robert S. Sher
Joan L. Shillis
Ms. Laurie C. Shulman
Ray and Marilyn Shuster
Milton and Gloria Siegel
Paul and Pamela Sieving
Sandy and Dick Simon
Frances and Scott Simonds
Nora G. Singer
Donald and Susan Sinta
Mrs. Beverly N. Slater
Thomas and Cora Slavens
Mr. and Mrs. David Boyd Smith
Donald C. and Jean M. Smith
Floyd and Fay Smith
Dr. and Mrs. Gregory Smith
Mr. and Mrs. Paul L. Smith
Virginia B. Smith
Richard and Jo-Ann Socha
Mr. and Mrs. Alan Solvay
Dr. and Mrs. Rodolfo Son
Mina Diver Sonda
Mr. Garnet B. Sparks
Dr. and Mrs. Robert Speer
Ms. Barbara Spencer
Jeff Spindler
Ward H. Squires
Mary Stadel
Mr. and Mrs. Gus Stager
Mr. and Mrs. Ralph Stahman
David and Ann Staiger
Ms. Constance Stankrauff
Charles and Julie Steedman
Dr. Michael and Helene Steinberg
Mr. J. Robert Sterling
William and Georgine Steude
Harold M. and Nancy G. Stevenson

M. Virginia Stevenson
Ms. Lynette Stindt and Mr. Craig S. Ross
Sue Stindt
Sally Stoehr
Dennis and Barbara Stoffer
Mr. and Mrs. Willis Stoick
Mr. and Mrs. James Stokoe
Aileen and Clinton E. Stroebel
Joe Stroud and Kathleen Fojtik
Mrs. Eugene Su and Christin Carter-Su
Mr. and Mrs. Patrick Suchy
Mr. and Mrs. Robert H. Super
Joan C. Susskind
Earl and Phyllis Swain
Waldo and Betty Sweet
John and Carol Swienckowski
Peg Talburt and Jim Peggs
Dr. and Mrs. William B. Taylor
Toby J. and Juliette S. Teorey
Vern and Bonnie Terpstra
Bev Teuscher
Carol and Jim Thiry
Catherine and Norman Thoburn
Charles and Peggy Tieman
Mr. and Mrs. Franz Topol
Mrs. Richard E. Townsend
James Toy
Irving and Barbara Tukul
Lisa and Jeffrey Tulin-Silver
James Turner
Jan and Nub Turner
William H. and Gerilyn K. Turner
Marilyn Twining
Mr. Koichi Uchida
Michael Udow
Barbara and Joseph L. Ullman
Ms. Elaine Umholtz
Paul and Fredda Unangst
Joyce A. Urba and David J. Kinsella
Brian A. and Susan R. Urquhart
Emmanuel-George Vakalo
Mr. and Mrs. Paul Valenstein
Jan Valentine
The Van Appledorns
Robert P. and Barbara Van Ess
Mr. Reynold Van-Til
Linda Vanek
Barbara and James Varani
Mr. Gary W. Vartanian
William C. Vassell
Joseph and Alice Vining
Terre Voegeli
Carolyn and Jerry S. Voight
Norman C. Wait
Mr. and Mrs. David C. Walker
Robert D. and Liina M. Wallin
Patricia Walsh
Ann E. Walton
Joseph C. Walters
Ann E. Walton
Ms. Graceann Warn
Kristine and Donald Warren
Margaret Warrick
Alice and Marty Warshaw
Dr. and Mrs. Alan Weamer
Christine L. Webb
Edward C. Weber

Joan M. Weber
Mrs. Joan D. Weber
Kathleen and William Weber
Deborah Webster
Mr. and Mrs. Gerald Weisman
Dr. Bernard Weiss
Mary E. Welch
Thelma L. Wells
Mr. and Mrs. Byron L. West
Scott and Marcie Westerman
Michael N. Whitcombe
James Boyd and Mary F. White
Nicholas and Patricia White
William W. White
Rebecca S. Whitehouse
Mr. and Mrs. Nathaniel Whiteside
Mr. and Mrs. Alexander Wiener, Jr.
Mr. and Mrs. Peter H. Wilcox
Mr. and Mrs. Michael S. Wilhelm
Raymond C. Williams
Mr. Dean Willmer
Dr. Magnus Wilson
Stephen B. and Danette Wineberg
Donna Winkelman and Thomas Easthope
Mr. Jim Winter
Dr. and Mrs. Lawrence D. Wise
David and Lia Wiss
Kristine and Donald Warren
Leonard and Sharon Woodcock
Barbara H. Wooding
Ms. Susan Wooding
Mr. and Mrs. David Wright
Ernst Wuckert
Mrs. Antonette Zadrozny
Ms. Mary J. Zako
Robert and Charlene R. Zand
Mr. and Mrs. F. L. Zeisler
Dr. and Mrs. George Zissis

SUSTAINING MEMBER

Akira Abe
Mr. and Mrs. Jerroll Adams
Jo Ann Aebersold
Ms. Mary Agnello
Rev. and Mrs. Charles Akre
Dr. Roger Albin
Miss Sarah K. Albright
Ms. Lois Lynne Alexander
Mark and Suzan Alexander
Ms. Kelly Allen
Mrs. Barbara Anderson
James David Anderson
Ms. Judith L. Anderson
David Andrea
Ms. Ann Andrew
Vivienne N. Armentrout
Mrs. Barbara Armstrong
Dr. and Mrs. Wallace A. Armeson, Jr.
Rudolf and Mary Arnheim
Dr. and Mrs. Peter Ash
Leslie and Michael Atzmon
Ronald E. and Anna Marie Austin
Kathy Babcock
Henry and Grace Bachofer
Wayne and Rachel Baer
Mr. and Mrs. J. Albert Bailey
Ms. Maureen A. Balke

Dr. and Mrs. Fleming Barbour
Mr. and Mrs. David Barera
Maria K. Barna
Ms. Toni Lee Owen Barstis
Joan W. Barth
Alan R. Bass
Mr. and Mrs. Percy Bates
Mrs. Gerhard Bauer
Ms. Patricia Lynn Bauer
Mr. Tom Hay Bauer
Margarete Baum
Ms. Evelyn R. Beals
Ms. Carol A. Beardmore
Jim Beck and Katie Home
Mary T. Beckerman
Tamar and Harel Beit-On
David and Mary Anne Beltzman
Mr. John W. Bennett Jr.
Dr. Rosemary R. Berardi
Ruth Berean
Eric Berg
Dr. and Mrs. Eli V. Berger
Ms. Sara Berkovitch
Mr. and Mrs. Lawrence S. Berlin
Andrew H. Berry, D.O.
Robert Hunt Berry
Ralph and Mary Beuhler
Irene Biber
Eric and Doris Billes
Sherry Hirsch and John E. Billi
Ms. Anne Birchfield
Dr. Stacy G. Birmingham
Mr. Bruce P. Block
Mr. Heinrich Bloemeke
Mr. Joseph Blotner
Mr. and Mrs. Francis X. Blouin, Jr.
Mr. and Mrs. Alexander Blumenberg
Martha M. Bohn
Mrs. Wallace J. Bonk
Thomas R. Boothby
Lola J. Borchardt
Dr. and Mrs. Ralph Bozell
Mr. Stephen Brabbs
Mr. Bruce Bradley
Kathryn Linder Bradley
Paul and Anna Bradley
Mr. Duane and Mrs. Barbara Branch
Debra and Gregory Brandell
Richard B. Brandt
Anne Meyendorff and Hugo Braun
Mr. Joel Bregman and Ms. Elaine Pomeranz
Ruth M. Brend
Virginia A. Bridge
Jim and Elizabeth Brien
Mr. and Mrs. Steven Brouwer
Mr. Charles C. Brown
Kay Brown
Martha L. Brown
Robert W. Brown
Mrs. Ruth A. Brown
Mr. and Mrs. Edward W. Browning
Mr. and Mrs. Donald K. Brundage
Donald R. and Ann D. Brundage
Robert and Carolyn Burack
Ms. Ann Burke
Mr. Joseph Burke

Mr. and Mrs. William Burneister
William and Rosalie Burns
Senator and Mrs. Gilbert E. Bursley
Ms. Jody Burton
Michele Bushaw
Mrs. (Betty) Thomas Bust
Thomas E. Butts
Mary C. Caggegi
John and Pat Calhoun
Mr. John T. Campbell
Ross and Bev Campbell
Dr. and Mrs. Brent Carey
Mr. Leo E. Carey
Daniel and Mary Carlson
Marc and Janet Carlson
Carolyn Longacre and Michael Wilens
Sally Carpenter
Mr. and Mrs. Ezra Cassel
Robert A. Castillo
Linda F. Chaikin
Mr. Hei-Ping Chang
Mr. and Mrs. Kee Man Chang
Ann Chapman
Evelyn M. Chase
Ms. Lori Cheek
Doris Chelune
Ms. Hisae Chen
Mignonette and Richard Cheng
Beverly and Morton Chethik
Ms. Janine Chey
Ms. Dianne J. Christopherson
Mr. Donald L. Christopherson
Mr. T. Michael Church
Charles and Beth Clark
Dr. and Mrs. Charles Clayman
Ms. Julie Clifford
Ms. Elizabeth Cobbs
Hubert and Ellen Cohen
Ms. Joan Colladay
Michael Collins
Mr. Joseph Conlon
Maria Constant
Ms. Maria L. Constant
Ms. Cassandra X. Constantino
Cindy Cooke
Jeff Cooper and Peggy Daub
Ms. Nancy O. Cooper
Richard and Betty Jane Cooper
Mr. Károl J. Corson
Marjorie and Jack Craven
Dr. and Mrs. Orlo L. Crissey
Lora Crombez
Ms. Carolyn R. Culotta
Mr. and Mrs. Robert L. Culver
Richard J. Cunningham
Ms. Marcia Dalbey
Dr. Jamie Dananberg
Mr. and Mrs. Lee Danielson
Judi and Ed Davidson
Mr. Dale De Vene
Mr. and Mrs. John S. Delos
Miss Judith Demick
Ms. Cindy Dempsey
Mr. and Mrs. William Dergis
Don and Pam Devine
Dr. Jack Distler
Mr. and Mrs. Mark R. Dixon

Ms. Nesrin Dogan
Mr. Michael Dolan
Ms. Sharon Dolega
Thomas and Patricia Dooley
Ms. Margaret Douglass
Ms. Karen E. Downing
Mr. Leonard Drake
Ms. Gretchen D. Driskell
Joanne Drow
Ms. Grace Drowns
Bruce Duffy
Mr. and Mrs. Harold Dunn
G. Jean Dykhouse
Herbert and Hildegard Ebell
Mr. and Mrs. Ralph E. Edwards
Mr. and Mrs. William H. Ehlhardt
Mr. and Mrs. Harry Elkins
Beulah Elving
Mr. and Mrs. Neal H. Elyakin
Ms. Suzy M. Engleberg
Ms. Anne Epstein
Ellen Wagner and Richard Epstein
Ms. Judy Erickson
Ms. Laurie Erickson
Lawrence J. Ernst
The Rev. and Mrs. Douglas Evett
Mr. Aren Fairchild
Barbara and Garry C. Faja
Drs. George and Susan Fee
Alyssa Fein
Sheila Feld
Dorothy G. Feldman
John and Karen Ferguson
Yi-tsi Feuerwerker
Sharon Fike
Mrs. John V. A. Fine
Ms. Clare M. Fingerle
Mr. and Mrs. Leland Finkbeiner
Mr. and Mrs. James Finn
Ms. Laurel Firant
Linda J. Firmhaber
Lydia Fischer
Eileen Callam Fisher
Ira Fisher and Beth Eisler
Ms. Cheryll Forgue
Mr. Dan Foster
Mr. Michael Fotiadis
Joan and Tom Fournier
Mr. Ronald Fracker
Ms. Judith Francis
Tom S. Frank
Ms. Suzanne Frederick
Paul and Judy Freedman
Jonathan and Lynn Friendly
Eleanor J. Froehlich
Hamao Fujiwara
Mr. Louis Fulgoni
Mr. and Mrs. John B. Fyfe, Jr.
Lois W. Gage
Janet and Al Gallup
Mr. and Mrs. Robert R. Gamble
Ms. Mary P. Garske-Bilyeu
Mr. Clifton Gault
Hilma and Larry Geffen
Mr. Michael J. Geha
Ruth B. Gerler
Leonore Gerstein

Ms. Ruth Gewanter
 Janet Giebel-Hoover
 Mr. David M. Gilbertson
 Dr. and Mrs. Gary Gillespie
 Ms. Lydia Gilmour
 John and Marcia Gilroy
 Beverly Jeanne Giltrow
 Ms. Zaida Giraldo
 Mr. Jack Goldberg
 Edie N. Goldenberg
 David and Beryl Goldsweig
 Dr. and Mrs. Luis A. Gonzalez
 Mary M. Gooch
 Mr. John Gorman
 Michael L. Gowing
 Mr. and Mrs. Gordon J. Graham
 Miss Pearl Graves
 Mr. Tim Grech
 Lewis R. and Mary A. Green
 Dr. Robert and Mrs. Eileen Greenberger
 Margaret and Atee Grillot
 Dr. and Mrs. Alexander Grinstein
 Henry M. Grix
 Dr. and Mrs. Milton Gross
 Mr. and Mrs. Harvey Grotirian
 Cathy Grovenburg
 Mrs. Elizabeth S. Groves
 Leora Grunhaus
 Mr. Paul Gustafson
 Jerfaas A. and Maria A. Haas
 Stella and Karl Hackbarth
 Roger F. and Caroline Hackett
 Mr. and Mrs. Raymond R. Haggerty
 Mr. and Mrs. John Hall
 Mr. Matthew Hall
 Tamara Halle
 Mr. Douglas Halliday
 Chaplain and Mrs. Louis Halsey
 Dr. and Mrs. James C. Hamilton
 Marjorie H. Hammes
 Mrs. Oliver Hanninen
 Mr. and Mrs. George W. Harms
 Rena Harold
 Katherine and Terry Harris
 Tim and Nancy Harrison
 Kathleen A. Hart
 John and Anita Hartmus
 Marie D. Hartwig
 Paul and Annabelle Harvey
 Miss Margaret A. Harwick
 Kenneth Hass and Nancy Magnani
 Mr. Rex E. and Dr. Mary J. Hatt
 Mr. Richard G. Hawkins
 Mr. and Mrs. William Hawkins
 Mr. and Mrs. E. J. Hayes
 Mr. and Mrs. W. J. Heider
 Glenda Heinz/Dance Arts Academy
 James and Esther Heitler
 Mrs. William Heldreth
 William Helfer
 Paula B. Hencken
 Evva and Michael Hepner
 Dr. and Mrs. Clark Herrington
 Ms. Thayer Herrmann
 John and Merrill Herzenberg
 Mrs. Emily F. Hicks
 Robert and Cathy Hightower
 Dr. H. M. Hildebrandt
 Mr. Lawrence Hill
 Ms. Paula Hiller and Dr. Ned Kirsch
 Mavis Hines
 Mrs. Carolyn Hiss
 Mr. and Mrs. James Hoch
 Ms. Dalia Hoffman
 Mr. and Mrs. Alan Hoffmann
 Mr. and Mrs. James F. Hoffmeyer
 Mr. and Mrs. Timothy Hogan
 Suzanne Hogg
 Dr. Carol E. Holden
 Ms. Mary Martin Holliday
 Mr. and Mrs. Lee Hollmann
 Mr. Craig Holmes
 Gerry Holowicki
 Rose Marie Hooper
 Jack and Davetta Horner
 Eunice Hong
 Mr. and Mrs. Phillip Horwitz
 Helga Hover
 Kenneth and Carol Hovey
 Helen and Hubert Huebl
 Ms. Carol Hulbert
 Dana Hull
 Dolores Humes
 Roger and Audrey Hunt
 Ruth J. Husung
 Robert A. and Lisa Huth
 Mr. Alexander Izzo
 Mr. Luther P. Jackson III
 Mr. and Mrs. Edgar F. Jacobi, Jr.
 Nicolette Jakubowicz
 Mr. and Mrs. William Janke
 Lily Jarman-Rohde
 Ms. Susan C. Jarvis-Noetzel
 Marilyn and J. Dale Jeffs
 Mr. Jay Jernigan
 Mr. and Mrs. Peter T. Jessup
 Mr. Hun-Yong Jo
 Carolyn T. Johnson
 Mrs. Rita Johnson
 Mr. Marshall W. Jorgensen
 Ms. Barbara L. Joyce
 Professor Fritz Kaenzig
 Mr. Paul Kalas
 Mr. Robert D. Kallay
 Nancy S. Karp
 Mrs. Barbara R. Kasle
 Judith Katch
 Ms. Geraldine Kaylor
 Ruth Keirl
 Charles and Jean Kelsey
 Walter R. Kemnitz Sr.
 Ruth and Norman Kemp
 Mr. and Mrs. Robert Ketrov
 Mr. and Mrs. Robert N. Kienle
 Mrs. Grace F. Kikuchi
 Raymond Kilmanas
 William and JoAnn Kimbrough
 John S. King
 Mr. William Kinley
 Elvina A. Kish
 Peter and Susan Klaas
 Shira and Steven Klein
 William L. Knapp, M.D.
 Ms. Julie Knight
 Mrs. R. J. Knight
 Peter and Margaret Knoess
 Kay Delle Koch
 Laura E. Kodres and Daniel O'Brien
 Mr. Nicholas Kokkales
 Mr. Donald Kootsillas
 Alan and Sandra Kortesoja
 Lisa A. Kozak
 Ms. Brenda Krachenberg
 Mr. and Mrs. L. Seelbach Kraft
 Ms. Stephanie Krasnow
 Darlene Rae Krato
 Mr. and Mrs. Ted Krauss
 Edward and Lois Kraynak
 Ms. Janet Kreiling
 John Krol and Debra M. Kirby
 Ms. Beverly Krueger
 Margaret Labadie
 Susana Labastida
 Anne-Marie and Anthony La Rocca
 Janet Landsberg
 Mr. and Mrs. Maurice I. Laney
 Patricia M. Lang
 Mr. and Mrs. Thomas R. Larson
 Mr. David Lau
 Mrs. Kent W. Leach
 Dr. and Mrs. Daniel E. Leb
 Mrs. Elaine Lebenbom
 Ms. Patricia Lee
 Mr. and Mrs. Daniel Legault
 Paul H. and Genevieve Lemon
 Dorothy R. Lenghart
 Mr. Peter J. Lenk
 Ms. Marci Lesperance
 Dr. and Mrs. Morton B. Lesser
 Robert Leuthner
 Phyllis S. Levin
 Sheldon G. and Mary Lois Levy
 Ralph and Gloria Lewis
 John and Sylvia Lewis
 Ms. Annette Lilly
 Chyi-ing Lin
 Yi-Guang Lin and Sophia P. Lin
 Arthur and Karen Lindenberg
 Ms. Evelyn M. Lipphart
 Mr. James Lorenz
 Dr. and Mrs. Robert E. Lorey
 Merrill Lougheed Poliner and Robert M. Lougheed
 Ms. Pamela L. Lovell
 Jonathan and Beth Denenberg Lowe
 Dr. and Mrs. B. Lucchesi
 Mr. and Mrs. Daniel F. Lyons III
 Mr. and Mrs. H. F. Maasab
 Donald and Barbara MacCallum
 Mr. Robert MacGregor
 Ian and Jean MacPherson
 Mr. and Mrs. Gregg E. Magmuson
 Mr. Walter Mahoney
 Mr. Bruce W. Main
 Marsha Main
 Ronald Majewski and Mary Wolf
 Allen Malinoff
 Mr. Francis Manning
 Armena Marderosian and Ronald Suny
 Mr. Michael Marinetti
 Helen M. Marks

Bob and Alice Marks
 Mr. and Mrs. Michael Marletta
 Todd and Margeret Marsh
 W. Harry Marsden
 Ms. Jeanette M. Martel
 Mr. and Mrs. Robert Martelli
 Ms. Anna Martens
 Yasuo and Motoko Maruta
 Renate Klass and Matthew J. Mason
 Mr. and Mrs. Bradley Massey
 Donald J. Mathison
 Mr. Joseph P. Mattimoe
 Ms. Katherine N Maxey
 Ms. Therease Maxwell
 Mrs. Donald C. May
 Ms. Kathryn M. May
 Michael Maylen
 Ms. Nancy W. McAllister
 Mr. William C. McCaughrin
 Kenneth and Martha McClatchey
 Mr. Michael McClelland
 Mr. and Mrs. Robert McCollum
 Ms. Mary J. McCully
 Doris King McCurdy
 Pat and Stewart McFadden
 John and Bridit McGillcuddy
 Stephen McKenny
 Mr. and Mrs. Ed G. McKinley
 Ms. Joan McMullan
 Alice McRae
 Ms. Mei-Ling Lin
 Ms. Marion Meilaender
 Norman Meluch and Laura Fisher
 Ms. Martha Mesa
 Anna Meyendorff and Hugo Braun
 Henry and Suzanne Meyer
 James R. and Gloria S. Meyer
 Mr. A. Rees Midgley
 Saunders and Shirley Midyette
 Mr. and Mrs. A.S. Mignery, Jr.
 Jerry and Emily Miller
 Mr. and Mrs. Charles R. Mitchell
 William G. Moller, Jr.
 Ruth M. Monahan
 Rafael Montalvolugo
 Patricia A. Montgomery
 Mrs. Claudia Moore
 Ms. Pauline T. Moore
 Mrs. Rosemarie Morgan
 Mr. Jeff Morton
 Janet Muhleman,
 Thomas P. Murtha
 Elizabeth B. Mustard
 Carroll and Sandra Nadig
 Geneva Nelson
 Mrs. Kathleen Nesbitt
 Mr. Alex Neshkes
 Sharon and Chuck Newman
 Chris Nordhoff
 Cheryl Norey
 Penelope and Theodore Norris
 Ms. Marcy North
 Mr. John O'Brien
 Ms. Patricia O'Connor
 Jon and Diana Oatley
 Ms. Mary Jane Olsen
 Paul L. and Shirley M. Olson

Ms. Arline Olvitt
 Martin and Lucy Overhiser
 Anneke de Bruyn Overseht
 Mrs. Charlotte Owen
 Mr. David H. Owens
 Mr. Dotun Oyedijo
 Marianne E. Page
 Dr. and Mrs. Robert Paine III
 John Palmer
 Gerard Pape
 Mark and Susan Paris
 Patricia Paris
 Mr. and Mrs. James W. Parker
 Dr. Mary Parks
 Mr. and Mrs. Timothy Parrott
 Virginia B. Passon
 Ms. Susan Patterson
 Dimitris and Vassiliki Pavlidis
 Douglas and Mariel Peck
 Mr. Jack Pelton
 Nancy and Bradford Perkins
 Ms. Harriet A. Perry
 Ms. Sandra Perry
 Doris I. Persyn
 Mrs. George Peruski
 Patsy C. Peterson
 Carol Phillips
 Honorable Harry E. and Jeanne M. Pickering
 Ms. Jeanne M. Pietig
 Mr. Joseph A. Placek
 Joan Pollard
 Ms. Mary Catherine Pollock
 Richard E. Popov
 Ruth S. Putnam
 Mr. and Mrs. S. Rabinovitz
 Norman and Norma Radin
 Dr. Dwarakanath G. Rao
 Mr. Kenneth Rapp
 William and Mary H. Rave
 Dr. and Mrs. Mark Rayport
 Maxwell and Marjorie Reade
 Gerald and Carol Rees
 Adrienne Reisner
 Rachel Resnick
 Ms. Maria Restuccia
 Ms. Ruth Reynolds
 Todd Rhodes
 Ms. Janis Richards
 Dr. Rebecca Ricoy
 Mr. F.L. Riddings
 Ms. Judy Ripple
 Ms. Grace Rising
 Mrs. Lita Ristine
 Renee A.C. Robbins
 Mr. Bill Roberts
 Marge and Don Robinson
 Byron and Alice Roe
 Janis M. Roese
 Terrie Rogers
 Drs. Dietrich and MaryAnn Roloff
 Bernard and Barbara Rosen
 Mr. David Rosenbaum
 Edie W. and Richard Z. Rosenfeld
 Lawrence and Abby Rosenthal
 Ms. Joan Roth
 Elizabeth Rother

Mr. Christopher H. Rothko
 Robert M. Rubin
 Michael and Margie Rudd
 James and Adrienne Rudolph
 Mr. Peter N. Ruma
 Mr. and Mrs. Robert J. Rups
 Ms. Carolyn Russell
 Ms. Joan Russell
 Mr. and Mrs. Gary Rutledge
 Jane Rutzky
 Michael and Joy Ryan
 Laura and Robert Sabol
 Ms. Doris Salley
 Julia E. Salo
 Mr. and Mrs. John Salvette
 Leonard and Mae Sander
 Mr. Lewis J. Sappington
 Frances Sawyer
 Craig R. Saxton
 Jochen and Helga Schacht
 Bonnie R. Schafer
 Mr. and Mrs. Raymond Schankin
 Mr. Peter Schappach
 Mr. and Mrs. Ray Schieb
 Erich S. Schifter
 Ms. Helena Schlorff
 Ms. Catherine M. Schmidt
 Ms. Margaret Schmidt
 Ms. Gwen Ellyn Schneider
 James and Alice Schneider
 Mr. and Mrs. Anthony Schork
 Yizhak Schotten and Katherine Collier Schotten
 Shirley Schreidell
 Janice Schuette
 Mr. and Mrs. Donald Schulz
 Aileen and Earl Schulze
 Art and Mary Schuman
 Mrs. Ralph E. Schweitzer
 Ms. Mary Ann Scott
 Ms. Shirley Seals
 Hugh Sebastian
 Ms. Eithel Partlow Sech
 Ms. Bridgit Seeger
 Dr. and Mrs. John Segall
 Mary Ann Sellers
 Mr. Donald D. Sepanski
 Mr. John Sepp
 Ms. Suzanne Roth Settle
 Brahm and Lorraine Shapiro
 Kathleen A. Sheehy
 Ms. Dorothy Sherba
 Mr. and Mrs. John Shilcusky
 Mr. and Mrs. Thomas Shuler
 Mr. and Mrs. Lawrence Siden
 Mr. and Mrs. Robert Silva
 Ron and Sheila Silver
 Mr. and Mrs. Robert Sims
 Scott and Joan Singer
 Ms. Teresa Singh
 Donald and Sharyn Sivyer
 William R. and Judy B. Sloan
 Ms. Kathy K. Smiley
 Mr. Gerald R. Smith
 Kristin and Gerald Smith
 Ms. Helen Y. Smith
 Mr. and Mrs. J. E. Keith Smith

Michelle Smith
 Ms. Barb Snyder
 Mr. C. Robert Snyder
 Mrs. Milton Snyder
 John and Ellen Soave
 Mr. and Mrs. Alan Solvay
 Ms. Tamara Lynn Sorelli
 Mr. Hani Soudah
 Ms. Hazel Spangler
 Martha E. Spencer
 John and Karen Spittler
 Mr. Tom Spollen
 Mr. Jeff Squire
 Irving Stahl
 Ms. Meroe Stanley
 Mary Decker Staples
 William C. and Kathryn Stebbins
 Erich and Dotty Steiner
 Sarah and Fred Steingold
 Mr. Robert S. Stephenson
 Joan Stern
 Mr. and Mrs. Michael Stevenson
 Mr. and Mrs. Gilbert Stiefel
 Dr. and Mrs. Robert Stoler
 Mrs. Ruth B. Stone
 Mr. and Mrs. Albert M. Straub
 Aileen and Clinton E. Stroebel
 Vera L. Strongman
 Mr. Robert D. Strozier
 Manfred Stryk
 Laura A. Stuckey
 Dr. and Mrs. Samuel Stulberg
 Ms. Terri L. Stull
 Charles and Barbara Sturm
 Mr. and Mrs. John E. Swigart
 Dr. and Mrs. Michael Szymanski
 Suzanne Tainter and Ken Boyer
 Karen I. Tank
 Ms. Denise Taylor-Moon
 Mr. Stephan Taylor and Ms. Elizabeth Stumbo
 Thomas and Leslie Tentler
 Mr. and Mrs. James B. Terrill
 Ms. Georgia Theodore
 Mr. and Mrs. Marcel Thirman
 Dr. and Mrs. Gerd Till
 George and Helen Timmons
 Connie and John Toigo
 Richard Topping and Shauna Tindall
 Kathleen Treciak and Timothy Hill
 Ms. Roni Tripodi
 Mr. George Trumbull
 Mr. and Mrs. Warren Turski
 Mr. Lyle Uhlmann
 Mr. Alejandro Uribe-Ahumada
 Jeffrey and Rachel Urist
 Chris and Deborah VandenBroek
 Virginia O. Vass
 Al and Dorothy Vegter
 Ms. Connie Velin
 Peter Ventzek
 Ms. Patricia S. Verlee
 Carl T. Vial
 John and Eunice Wagner
 Leigh and Robert Waldman
 Mr. and Mrs. David C. Walker
 Dr. Donna Wessel Walker

Ms. Ellen Marie Walker
 Arlene and Alan Walt
 Dr. Christina Wang
 Marguerite E. Ward
 Lorraine Nadelman and Sidney Warschausky
 Christine Weatherford
 Richard and Madelon Weber
 Wendell and LaDonna Weber
 Dr. and Mrs. Myron E. Wegman
 Carol and Jack Weigel
 Ms. Elaine Weingart
 Peri Weingrad
 Joanne Weintraub
 Donna G. Weisman
 Lisa and Steve Weiss
 Ms. Judith Wenzel
 Carol Westerman
 Mildred M. Wheeler
 Barbara Tate Whipple
 Cindy White
 Nancy C. and James J. White
 Mr. and Mrs. Leonard A. Wilcox Jr.
 Mrs. Carolyn Wilde
 Ms. Joan Wilde
 Carolyn Longacre and Michael Wilens
 Lindsey Wilhite
 Mr. and Mrs. Charles Wilkins
 Helen M. Wilkinson
 Edwyn Williams
 Mr. Mark Williams
 Ray and Twyla Williams
 Mr. and Mrs. L. R. Windecker
 Robert Winfield
 Inez Winslow
 Dr. and Mrs. John R. Wiseman
 Mr. Stephen Wolpert
 J. Reimer Wolter, M.D.
 Julia Woodbury
 Mr. Allan D. Woodell
 Stewart and Carolyn Work
 George and Elsie Yellin
 Ms. Sandra Yobbagy
 Mr. Frank Youkstetter
 Frances L. Young
 Ms. Pamela Young
 Brian Yurewicz
 Paul and Yvonne Zenian
 William Zolkowski
 Julia M. Zielke

Business, Corporation & Foundation Support

BRAVO SOCIETY

Arts Midwest
 Ford Audio
 Ford Motor Company Fund
 Great Lakes Bancorp
 Manufacturers Bank of Detroit
 Michigan Council for the Arts
 Wamer Lambert/Parke Davis

CONCERT MASTER

Brauer Investment Company
 Chelsea Milling Company
 Comerica and Comerica Capital Management
 Ford Motor Credit Company
 Jacobson's
 KMS Industries
 Benard L. Maas Foundation
 McKinley Associates, Inc.
 O'Neal Construction
 Philips Display Components Company
 Regency Travel
 Society Bank Michigan

LEADER

Aristoplay Ltd.
 Association of Performing Arts Presenters
 Creditanstalt-Bankverein
 General Motors Corporation
 The Irwin Group of Companies
 Michigan National Bank
 The Mosaic Foundation
 Estate of Marie Schlesinger
 NBD Ann Arbor
 Spear & Associates, Inc.
 The Edward Surovell Company
 Washington Street Station

GUARANTOR

Ann Arbor Area Community Foundation
 Bodman, Longley & Dahling
 Chelsea Community Hospital
 Dobson McOmber Insurance Agency, Inc.
 Michigan Trenching Service
 The Power Foundation
 Riverview Lumber & Building Supply Co., Inc.
 Shar Music Products
 T & T Sports Management Inc.

SPONSOR

The Old German Restaurant
The Eugene and Margaret Ormandy
Foundation
The Radom Fund
Charles Reinhart Company
SCP Enterprises, Inc.
Vlastic & Company

BENEFACTOR

Clark Professional Pharmacy
Econo-Pak / Quality Container
Edwards Brothers, Inc.
Garris, Garris, Garris & Garris, P.C.
John E. Green Company
Light Action Foundation
Thomas S. Monaghan, Inc.
Seva Restaurant and Market
Washtenaw Urology Clinic, P.C.

PATRON

Catherine McAuley Health Center
Culbertson Jacobs & Milling Architects
Chelsea Flower Shop
Johnson, Johnson and Roy, Inc.
King's Keyboard House
David Lindemer Associates, Inc.
L & S Music
Milliken Interiors, Inc.
Rollform, Inc.
SKR Classical
University Microfilms International

DONOR

Ann Arbor Convention & Visitors Bureau
Adistra Corporation
Conlin Faber Travel
Progressive Building Materials

SUSTAINING MEMBER

Louis G. Redstone Architects

GAIL RECTOR PORTRAIT FUND

Dr. and Mrs. Robert G. Aldrich
Joan and David Anderson
Harry and Betty Benford
Richard S. Berger
Mr. and Mrs. Carl A. Brauer, Jr.
Mr. and Mrs. Allen P. Britton
Mr. and Mrs. John Alden Clark
Gage R. Cooper
Margaret and Douglas Cray
Sally A. Cushing
Jack and Alice Dobson
Barbara L. Ferguson
Ken, Penny and Matt Fischer
Mary Jane and Charles Fisher
Mr. and Mrs. Robben Fleming
Mr. and Mrs. Garnet R. Garrison
Fred and Joyce Ginsberg
Anita and Al Goldstein
Michael L. Gowing
Mr. and Mrs. Elmer F. Hamel
Mrs. Robert Hamilton
Harlan and Anne Hatcher
Harold and Anne Haugh
Debbie and Norman Herbert
Mr. and Mrs. Howard S. Holmes

Ray and Jude Huetteman, Jr.
Alice and Keki Irani
Mr. and Mrs. Roger E. Jacobi
Keith and Kay Jensen
Herbert and Susan Joho
Dr. and Mrs. Richard D. Judge
David and Sally Kennedy
Richard and Ann Kennedy
King's Keyboard House
Mr. and Mrs. Carl J. Lutkehaus, Jr.
Mr. and Mrs. John M. McCollum
Paul and Ruth McCracken
Charlotte McGeoch
Mr. and Mrs. Roger E. Maugh
Mrs. Donald C. May
Professor and Mrs. Gustav Meier
Alan G. and Sally Merten
Mrs. Eugene Ormandy
Mr. and Mrs. William B. Palmer
Mr. and Mrs. John D. Paul
Elizabeth and Beverly Payne
J. Raymond and Agnes I. Pearson
Maxine and Wilbur K. Pierpont
Eugene and Sadye Power
Mr. and Mrs. Phillip H. Power
Mary and Robert Pratt
Michael and Helen Radock
Tad Rae
John and Dorothy Reed
William and Mary Revelli
Frances Greer Riley
Mr. and Mrs. Stephen J. Rogers
Mary R. Romig-de Young
Professor Thomas J. and Ann Sneed
Schriber
Stephen Skelley
Mr. and Mrs. John C. Stegeman
Elizabeth L. Stranahan
Dr. and Mr. E. Thurston Thieme
Mary H. Thieme
University of Michigan School of Music
Mr. and Mrs. Marc R. von Wyss
Jerry and Elise Weisbach
Mr. and Mrs. Stanfield Wells, Jr.
Dr. and Mrs. S.B. Winslow
Phyllis B. Wright

MEMORIALS

Marion L. Beam
John W. Bean
Mrs. Hedy B. Berger
Leonard Bernstein
Roscoe and Lillian Bonisteel
Hope H. Bloomer
Dr. Gordon C. Brown
Marion W. Brown
Alice Kelsey Dunn
Robert S. Feldman
Carl Fischer
Gerald J. Fischer
Florence Fuller
Letitia Gamer
Dr. Paul Hogg
George Hunsche
Hazel Hill Hunt
Donald Katz
Jean Kennedy

George Michael Landes
Alfred and Grace Lovell
Alfred H. Lovell, Jr.
Betty S. Lovell
Doris L. Lueke
Frederick C. Matthaei, Sr.
Glenn McGeoch
Vaden W. Miles
Margaret Peterson
Carl and Loretta Pollmar
Sara Power
Gwen and Emerson Powrie
Dr. Joseph Preston
George Quick
Steffi Reiss
Percy and Elisabeth Richardson
Denis Rigan
Ruth Rogne
Bernard J. Rowan
Dr. Richard G. Schneider
Mrs. Ethel Sharklin
Charles A. Sink
Mrs. Arthur W. Smith
Mrs. James H. Spencer
(Comelia Miller Spencer)
Robert Spicer
Ralph L. Steffek
Mark C. Stevens
Mischa Titiev
Mrs. Flora A. Tomion
Dur Vetter
Mrs. Elena Vlissiers
Ione Wagner
Peter Holdemess Woods

MATCHING GIFT COMPANIES

ADP Network
Allied Signal Foundation
Allstate Insurance Company
AT&T Foundation
Bechtel Foundation
Chrysler Corporation
Consumers Power Foundation
Detroit Edison Foundation
Dow Chemical U.S.A.
Eli Lilly and Company Foundation
Federal Mogul Corporation
Ford Fund
Gannett Foundation
General Electric Foundation
General Motors Corporation
Honeywell Foundation
J.C. Penney Company, Inc.
Johnson Controls Foundation
Libbey Owens-Ford Company
Maccabees Mutual Life Insurance Co.
Manufacturers Hanover Foundation
The Manufacturers Life Insurance Co.
McGraw-Hill Foundation, Inc.
Merrill, Lynch, Pierce, Fenner & Smith, Inc.
Metropolitan Life Foundation
Michigan Bell Telephone
3-M Foundation
Northern Telecom, Inc.
Northwestern Mutual Life Insurance
Paramount Communications Inc.

The Proctor & Gamble Fund
Rohm and Haas Company
Scientific Brake and Equipment
Society Bank
UNISYS Corporation
Warner Lambert Company

IN-KIND CONTRIBUTIONS

Acoustical Ceiling & Partition/Ralph Wickham
Alice Simsar Gallery
Peter Allen
American Airlines
Ann Arbor Ceiling & Partition/Ron Dunn
Catherine Arcure
Michael and Charles Avsharian
Johnny and Betty Barfield
Gail Davis Barnes
Richard Bartlet
Wills Battles
B/C Contractors, Inc./Wayne Bryant
J.C. Beal Construction Co./Fred Beal
Bill Beck
David Belmore
Benson House Bed and Breakfast
Dave Bianco
Charles Borgsdorf
Dean Paul C. Boylan
Carroll Bradley
Mike Brady
Carl Brauer Investment Co./Carl Brauer
Bricklayers & Allied Craftsman/Sam Palazzolo
Brinker Mechanical Insulation/Gene Brinker
James F. Brinker
Allen and Veronica Britton
David O. Brown
Earl Brown
Jim Brunker
Bryant Air Conditioning/Joe Sera
Builders Heating Supply/Doug Beerens
Brenda Briest Casher
Conrad Cannon
Carpenters Local #512/Edwin Nyhus
Celotex Corp./Gary M. Draisin
Certainteed Corporation/Mike Witt
Anne Charles, Canadian Consul General
Mike Cisman
Cheers!
Chelsea Community Hospital
Chelsea Flower Shop
Don and Betts Chisholm
Clinch-On Products/Tom Semett
Scott Cogan
Phil Cole
F.G. Crampton
Shannon Culver
Curtin and Alf, Luthiers
Scott Dault
R. Day
Roger Day
Doug Defavero
Detroit Area Bulgarian Community
Detroit Armenian Women's Club
I. Domenech
Jim Doneth

Trudy Dophosoh
Dow Chemical U.S.A./Mike Appicelli
Mike Eadie
Rosalie and Martin Edwards
Greg Eggleston
Electrical Workers Local #252/John Briston
Paul Everett
John Field
Andy Fletcher
Fine Flowers
Fingerle Lumber Co./John Fingerle
Ken, Penny and Matt Fischer
Fontanessi & Kaan Co./Jim Marzolf
Herb Foor
Ford Division, Ford Motor Company
Judy and Richard Fry
Richard E. Fry/Richard E. Fry A.I.A.,Ltd.
Gandy Dancer
Gasser & Bush, Inc./Randy Stowers
Kerry Gauss
Phil Gerwick
Glidden Paint Co./David Smith
J. Grey
Bob Grimston
Margo Halsted
Gregg Hamm
Jim Hanson
Hardware Agents/Richard Suminski
Mark Harper
Paul Harrison
Rob Henning
Matthew Hoffmann
JoAnne Hulce
L. Hummel
Huron Valley Glass/Rich Sayles
Alice Davis Irani
Perry Irish
Ironstone Welding/Dan Parrotte
Stuart Isaac
Sue Jantschak
Jewish Community Center
Timothy Julet
Carol Kahn
Rex Kanitz
Russ Kanitz
Drs. Gloria and Bob Kerry
Chris King
Howard King
King's Keyboard House
Dennis Kittel
Charles Klein
David Kwan
Tom Lancaster
H.S. Landau, Inc./Henry Landau
Landis & GYR Powers, Inc./Keith A. Walker
Wilson Little
Gary Loy
Martha Cooke Residence Hall
Madison Electric Supply/Gary Matthews
John Martin
Jamie Mayband
Michael Merrell
Metzger's Black Forest Restaurant
Michigan Trenching Service/Bob Lyons

Doug Miller
Sandra L. Miller/Plumbing & Mech. Contractors
Robert Millheim
John Minud
Mister Rubbish/Rod Kitchen
A. Mitchell
MKK Technologies, Inc./Sadaharu Honda
Gary and Ann Moeller
Mark Mohr
Dean Morrow
MSI/Jack Moorhead
Netherlands-American University League
New York City Opera Company
Jon Nyhus
Joe O'Neal
Oxford Conference Center, Scott Terrill, Mgr.
Paholak Group/Charles Phibbs
Philip Paskan
William Payne
Plumbers & Pipefitters #190/Don House
Jeff Porter
Don Pruneall
Public Relations Society of Detroit
Regency Travel
Rob Reilly
Harry Richardson
Alyce Riemenschneider/Riemenschneider Design Assoc.
Robertson-Morrison, Inc./Frank Johnson
Ann and Tom Schriber
Schlage Lock Co. Riggs Miller
Ronald Seeley
Kermit Sharp
Aliza and Howard Shevrin
Siemens, I.T.E./Scott Pemberton
Jeff Simkiss
A.F. Smith & Son, Inc./Bill Koepp
David Smith
Julius S. Smith
Kathy Smith
Dave Spicer
Lois and Jack Stegeman
Greg Stephans
Helmut and Candy Stern
T.J. Stillman
Tony Swartz
Pete Swope
Garold A. Taylor
The Trane Company/Jim Baker
Detlof von Berg, German Consul General
Chuck Visel
United Mill & Cabinet Co./Dennis Ruppert
University of Michigan Construction Rep./Jim Tripp
University of Michigan Armenian Studies Program
University Musical Society Advisory Group
Washington Street Station
Washtenaw Community College/Les Pierce
Jack Weidenbach
Shelly F. Williams
Wyandotte Electric Supply/Richard Beck