

NATIONAL SYMPHONY ORCHESTRA

Mstislav Rostropovich, Music Director and Conductor

Wendy Warner, Cellist

Saturday Evening, October 12, 1991, at 8:00
Hill Auditorium, Ann Arbor, Michigan

PROGRAM

Overture to *La gazza ladra* Rossini

Concerto in A minor for Cello and Orchestra, Op. 129 Schumann
Nicht zu schnell (Not too quickly)
Langsam (Slowly)
Sehr lebhaft (Very lively)

Wendy Warner, Cellist

INTERMISSION

Symphony No. 3 in E-flat major, "Eroica," Op. 55 Beethoven
Allegro con brio
Marcia funebre: adagio assai
Scherzo: allegro vivace
Finale: allegro molto

This concert is made possible by a gift from the estate of William R. Kinney.

The pre-concert carillon recital was performed by Kathleen Beck Maly, a U-M School of Music graduate, currently president of the Mid-Michigan Chapter of the National Society of Arts and Letters.
Northern Telecom is the sponsor of the National Symphony Orchestra's 1991 North American Tour.
The National Symphony Orchestra records for CBS Masterworks, Delos, Deutsche Grammophon, Erato, London, and Sony Classical Records.
The box office in the outer lobby is open during intermission for tickets to upcoming Musical Society concerts.

Overture to "La gazza ladra"

GIOACHINO ROSSINI (1792-1868)

The opera *La gazza ladra* ("The Thieving Magpie") was composed in 1817 and produced at La Scala, Milan, on May 31 of that year. Although Rossini was only 25 years old, it was his twentieth opera. It was the fourth of his works to receive a premiere at La Scala, but the first to enjoy success there. Its success, in fact, was enormous, but this opera, like almost all of Rossini's stage works except *The Barber of Seville* and *La Cenerentola* (both still earlier works, introduced in Rome in February 1816 and January 1817 respectively), virtually disappeared from the active repertoire at about the time of the composer's death. Such revivals as there were from time to time presented *La gazza ladra* in severely truncated form or in substantially recomposed versions such as the one by Riccardo Zandonai, who replaced much of Rossini's music with his own and changed features of the plot as well. When Alberto Zedda conducted the Rome Opera production using his own new critical edition in November 1973, it was the first time in a hundred years that the work was given as Rossini composed it.

The opera, which Rossini and his librettist Giovanni Gherardini designated a *melodramma*, is a serious work with comic touches in the first of its two acts (which, without cuts, are about as long as *Die Walküre*). The plot was taken from a popular French play, *La Pie voleuse*, a tragedy in which a servant girl is tortured and executed for stealing a pearl necklace; only after her death a thunderbolt splits open a statue of Justice to reveal a magpie's nest, in which the thievish bird has sequestered the necklace. In the opera, the loot is a silver fork and spoon, and there is a happy ending: the firing squad shoots into the air, the discovery is made, and the townspeople celebrate the betrothal of the greatly beloved young heroine.

While the opera is seldom performed, the brilliant Overture has been a staple of the orchestral repertoire since it was first heard, and it surely contributed to the opera's initial success. The unprecedented idea of the two snare drums answering each other from dif-

ferent sides of the orchestra commanded attention, as Rossini knew it would, and the wonderful tunes (from a bass aria and a soprano-alto duet in Act II), the demanding writing for the winds (the horns in particular), and the famous "Rossini crescendo" combined with it to make an irresistible package.

It was irresistible at the premiere to everyone but one young man, a student conductor, who was so outraged by the use of the two snare drums that he set out to do Rossini in with a stiletto. Rossini calmed him by giving his solemn word never to do it again. It was a promise he had probably made to himself when he finished the score, since he knew it was the uniqueness of the effect that made it so stunning, and that the impact would only be diluted if he were to use it again.

Cello Concerto in A minor, Op. 129

ROBERT SCHUMANN (1810-1856)

When Schumann arrived in Düsseldorf to take up his duties as music director on September 2, 1850, he was filled with ideas for new compositions as well as enthusiasm for his new responsibilities. He began composing his Cello Concerto on October 10, and went at it with such vigor that he had the full score completed in two weeks. On the same day Schumann completed this score, he conducted the first concert of his new subscription series, with his wife Clara as soloist, and barely more than a week after that he began sketching his *Rhenish* Symphony, which was completed in December and performed the following February. The Cello Concerto was not heard until four years after Schumann's death; it was introduced on June 9, 1860, in a series of concerts at the Leipzig Conservatory celebrating the 50th anniversary of his birth. (Ludwig Ebert was the soloist on that occasion.)

Schumann had his reasons for withholding this work and was, in fact, still going over it early in 1854, during the first stages of the breakdown that led to his confinement. At that time, he took out the still unpublished score and began making corrections —

an effort that, according to Clara, "seemed to relieve him somewhat." One might well imagine that immersion in this music would have such an effect, for it is not only lyrical in character but brimming over with song, at once sweetly elegiac and restorative.

It might be noted in this context that Schumann apparently had an affection for the cello — a sympathetic response to the instrument's character and capacities for expression — second only to his feelings for the piano among all the instruments for which he wrote. This is apparent throughout his chamber music (particularly in the Quartet in F major, Op. 41, No. 2, and both the Quartet, Op. 47, and the beloved Quintet, Op. 44, for piano and strings), and in such orchestral works as the Piano Concerto and the Third and Fourth symphonies.

The Concerto is in three movements, but because there are no breaks between them, and because material from the opening one returns in the finale, the work is sometimes described as being in a single movement (with clearly discernible sections). The very vagueness of the form is somehow consonant with the spontaneity of expression one feels in the music. The three movements are not simply played without pause, but are linked together by a recitative-like bridge passage based on the "motto" theme enunciated in the work's opening, which also returns in fragmented form in the finale and in its original form in the only cadenza, near the end.

There is little of the conventional concerto feeling about this work. For all the demands it makes on the soloist, it is not so much a display piece as a vehicle for Schumann's own characteristic expressiveness, even in the passages filled with double-stops. The intimate give-and-take of chamber music here takes the place of anything resembling traditional contrast or struggle between soloist and orchestra, though the former is always firmly in the center of the action.

The first two movements are especially songful, and there is a particularly imaginative touch in the second, a very Schumannesque romance in which the soloist's phrases are answered by a solo cello in the orchestra. The finale is a vigorous rondo that provides the most effective contrast with the preceding movements; here, there is another original touch in the form of an accompanied cadenza,

an innovation virtually without precedent in Schumann's time.

Symphony No. 3 in E-flat major, "Eroica," Op. 55

LUDWIG VAN BEETHOVEN (1770-1827)

Beethoven was profoundly affected by demonstrations of idealism and heroism; *Fidelio* is the very sort of opera we would expect from him, and we can understand his uncharacteristic gesture of refusing payment for his music for Goethe's *Egmont*. He was moved by reports of the heroic death of the British General Abercrombie in the Battle of Alexandria in 1798 and by other military events in that dramatic period, and he was impressed most of all by the young Corsican (only a year older than himself), who had become First Consul of the French Republic. In Napoleon, he saw the liberator of the downtrodden, the destroyer of oppression and class distinctions, the driving force for a democratic Europe. In 1801, Beethoven became a frequent visitor to the French embassy in Vienna and got to know the young ambassador, General Jean Baptiste Bernadotte, who was an active music-lover. (The violinist Rodolphe Kreutzer, whose name was to become attached to Beethoven's best-known violin sonata, was a member of Bernadotte's retinue.) It was Bernadotte, who subsequently became King Charles XIV of Sweden who suggested to Beethoven that he compose a large-scale work in honor of Napoleon, and it was in that context that Beethoven undertook this unprecedentedly grand symphony.

In 1803, Beethoven expressed his hope that Napoleon would accept the dedication of the score, and declared that, regardless of that decision, it would bear the title *Bonaparte*. When he learned in May 1804, however, that Napoleon had crowned himself Emperor, his disillusionment was volcanic; within moments of receiving the news he reached for the score of his new symphony, literally tore through the paper in expunging the title *Bonaparte*, and in its place inscribed: "*Sinfonia eroica, composta per festeggiare il sovvenire d'un gran uomo*" — "Heroic Symphony, composed to celebrate the memory of a great man." The music itself, of course, remained unchanged, its real impetus having been Beethoven's own idealism, the concept of heroism as he perceived it.

Beethoven's original intention was to open the Symphony with the statement of the principal theme (which happens to have turned up in the tiny overture the 12-year-old Mozart wrote for his opera *Bastien und Bastienne*, two years before Beethoven was born); he added the two crashing chords as a prefatory gesture in an inspired afterthought once the movement was completed. There are no fewer than five additional themes in this movement, all of them similarly simple and spare, all similarly effective in evoking an impression of vigor and breadth combined. The elaborate embellishments with which the principal theme is adorned in some of its reappearances may be a sort of throwback to Beethoven the brilliant keyboard improviser; the variation principle, in any event, is at least hinted at, if not directly approached, even this early in the work. The jarring discords at pivotal points and the so-called "false entry" of the horn initiating the recapitulation were unimaginably novel and, in fact, rather daring when this work was first heard; the latter touch was regarded as a "mistake" by conservative musicians, and as late as the 1890s some conductors were moved to "correct" this "misjudgment" on Beethoven's part.

Whether or not Beethoven was originally moved to compose a funeral march by the death of General Abercrombie, he found a ready model in the form of the funeral march in the opera *Achilles* by Ferdinando Paer (whose *Leonora* preceded Beethoven's own operatic treatment of the same story by a year or so). The great double fugue, whose climactic threnody for the horns turns lament into exaltation, grandly rejects any attempt to affix any individual's name, but it must be acknowledged that when Beethoven received the news of Napoleon's death in 1821, he remarked: "I composed the music for that sad event some 17 years ago."

After the sustained tension of the huge first and second movements, respite is afforded in the scherzo, described by Tovey as "the first in which Beethoven fully attained Haydn's desire to replace the minuet by something on a scale comparable to the rest of a great symphony." While the tension is reduced here, the sheer vigor of the music's drive is unremitting and occasionally explosive. The three horns make a stunning effect in the trio, with a few deft strokes raising the level from one of bucolic bustle to one

consonant with the work's title. Both sections are said to have roots in Austrian folk music.

A symphonic finale in variation form was rather a novelty in Beethoven's time (and continued to be much later, for that matter), but here that form seems an inspired choice for a grand summing-up, and the theme chosen for the occasion is one not merely "recycled" from Beethoven's own earlier music, but especially appropriate for its personal significance. He used it originally as the seventh in a set of 12 *Contredanses*, composed in 1801, and in the same year used it again in the finale of his ballet *The Creatures of Prometheus*. By the time he made his third use of this theme, in the Piano Variations in E-flat, Op. 35, he had already sketched the final movement of the *Eroica*, which, following grandly dramatic opening gesture, begins just as the piano work does, with the theme at first only hinted at with a playful statement of its bass pattern alone. Once the theme itself enters, however, the treatment is utterly different, commencing with fugue and concluding with a magnificent coda that manages to incorporate both intimacy and proclamative grandeur.

While Napoleon changed the face of Europe, Beethoven, in this work brought about because of Napoleon, thoroughly revised all earlier notions of what a symphony ought to be. It is fitting that his personal signature, in the form of his agreeable little dance tune with its "Promethean" connotation, survived the change of title.

— Program Notes by Richard Freed

UMSCard

The Musical Society wishes to thank these Ann Arbor restaurants and stores for offering special savings to subscribers whose UMS ticket purchases total \$200 or more. UMSCard participants for the 1991-92 season are:

Amadeus Restaurant, 122 E. Washington
Kerrytown Bistro, 415 N. Fifth Ave.

Washington Street Station,
116 E. Washington

Gandy Dancer, 401 Depot Street
(one-time discount only)

L & S Music, 715 N. University
SKR Classical, 539 E. Liberty



The National Symphony Orchestra is now in its 61st season, and its 15th season under music director Mstislav Rostropovich. The Orchestra's reputation has risen steadily throughout his leadership and now is generally acknowledged to be one of America's finest orchestras. Highlights of recent seasons include the Orchestra's first trip to the U.S.S.R., marking Rostropovich's return after 16 years of exile. The National Symphony has earned praise across the country and around the world for its numerous other tours, as well as for its seasons at home. As the orchestra of the capital of the United States, it regularly participates in events of national and international importance.

The National Symphony Orchestra is the artistic affiliate of the nation's center for the performing arts, the John F. Kennedy Center for the Performing Arts, James D. Wolfensohn, chairman. The Center is a living presidential memorial mandated by

Congress to present and produce the finest performing arts from this country and abroad while encouraging an audience from the widest possible population. The National Symphony Orchestra is a key element in the fulfillment of that mandate, through both its Washington area concerts and projects — including classical and pops concerts, an extensive educational program, regular broadcasts and recordings, and a commissioning program for the creation of American orchestral works — and its 20 tours on four continents under Rostropovich's direction. Through its ongoing relationship with the Orchestra, the Center supports all National Symphony Orchestra activities at home and abroad.

The National Symphony Orchestra returns this evening for its third Ann Arbor concert. Previous appearances were in March 1959 under the baton of Howard Mitchell and in 1985 with Maestro Rostropovich.

Three Days in August 1991 . . .

A year and a half after his triumphant return to Russia with the National Symphony Orchestra, Mstislav Rostropovich recently made another trip to Moscow, this one precipitated by the monumental political crisis in his homeland. In Paris when the news of the coup broke, Rostropovich joined his compatriots at the first available moment. He shares those three days in the following account.

On August 20th, I arrived in Moscow on Aeroflot in order to join my people in their opposition to the junta, which had come to power in order to plunge the country into a nightmare of communist dictatorship. I went straight from the airport to the Building of the Russian Supreme Soviet, where I spent the first twenty-three and a half hours. Then, after a three-hour break, I went back and spent the next night and day there. Upon my arrival at the Supreme Soviet Building, I realized that our belief in victory was not unconditional, since we all understood that the enormous military machine of the army, the KGB, and the militia could wipe from the face of the earth more than just this building, surrounded as it was by several tens of thousands of defenders. I can attest to the fact that everyone I met was ready to go to his death rather than surrender. This is true both of the people who were guarding the building outside as well as those who were inside, where we received non-stop information about the movements and numbers of military vehicles that were moving towards the White House. By intercepting radio communications from the other side, we also learned the exact time of the attack. Our contact with the outside world was cut. Our only contact with the defenders of the building was by means of loudspeakers. A medium wave radio transmitter sent a signal that could be heard by Muscovites. We were cut off from TV and central radio, which broadcast only instructions of the junta.

Immediately upon my arrival, I was assigned an armed bodyguard, who was instructed not to shoot in the event that soldiers attacked the building, so as not to draw their fire. For the rest of my life I will never forget the atmosphere both inside and outside the building. In the Russian White House, we also received information about those who had voluntarily come over to our side. There were many cases of whole units refusing to attack us. That is why the time of the attack kept changing. Inside the building, we heard shooting and the noise of approaching tanks. We were given information from various sources about cities, regions, and whole republics that supported us unconditionally. That gave us more and more confidence, and on August 22 that confidence became unshakeable. In the crowd, even at the most difficult moments, a few minutes before an expected attack, you could feel the decisiveness and discipline. Yeltsin's group was firmly in charge of the opposition. With his confidence, energy, and oratorical talent, Yeltsin took over the leadership of the vast majority of the entire country and is now the undeniable leader of the Soviet Union.

For me, those three days spent in my country with my people at that most critical time were the best days of my life. I got to know the people from whom I was separated 17 years ago, and especially, I got to know the younger generation, which I had not known until now. I spent time with them, inside the building and out, and talked with groups of people who were expecting an attack, or, more accurately, death. The vast majority were young people, young people who did not want to give away the first gains of democracy. They were filled with determination and hope for the future, and I am certain that in their drive towards freedom they are unconquerable.

I returned to Paris on August 23 with great pride in my countrymen.

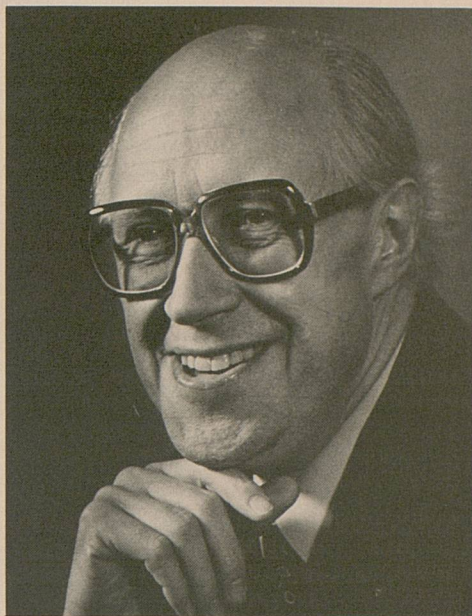
— M. Rostropovich, August 26, 1991
Translated from the Russian by Mary Patzer

The current season marks Mstislav Rostropovich's 15th season with the National Symphony Orchestra, making his leadership among the longest and most impressive of current music directors of major American orchestras. During his tenure, the Orchestra has been distinguished by constant growth in both artistry and reputation.

Major achievements during his tenure with the National Symphony Orchestra include: extensive touring of the United States and abroad, several critically acclaimed recordings, seven years of nationally broadcast concerts (the first in the Orchestra's history), and several televised concerts, all leading to greatly enhanced national and international recognition of the National Symphony Orchestra's artistry. Under Maestro Rostropovich's guidance, the Orchestra has commissioned works by some of the world's most distinguished composers and has begun, with the Sidney L. Hechinger Foundation, a commissioning project designed to create new orchestral works, with special encouragement given to American composers. The first of the Hechinger commissions, Stephen Albert's symphony *RiverRun*, won the 1985 Pulitzer Prize for Music. For his many achievements, but particularly for accomplishments with the National Symphony, Maestro Rostropovich was named *Musical America's* 1987 Musician of the Year.

The year 1990 saw a burgeoning of the National Symphony's international reputation under Rostropovich's direction. Highlights included the National Symphony's first tour to the U.S.S.R., a triumphant vindication for Rostropovich. It was his efforts on behalf of humanitarian causes (particularly his defense of dissident author Alexander Solzhenitsyn) that caused Maestro Rostropovich to be exiled from the U.S.S.R. in 1974. His return to his native land was covered by the world's media. The same year also marked the Orchestra's third tour of Japan, as well as four recording releases. One, the complete *Boris Godunov*, was nominated for a Grammy for Best Opera Recording.

Maestro Rostropovich's personal career is extraordinary and has been distinguished by an enviable diversity, bringing him recognition as conductor, cellist, and pianist; as one of today's most important catalysts for the creation of contemporary music; and as one of the world's most outspoken defenders of



human rights. His 60th birthday was celebrated with gala concerts and festivals in Washington, New York, Boston, Paris, London, and Tokyo, as well as a musical cruise in the Mediterranean. Among the recent accolades that have been showered upon him are Knight Commander of the Most Excellent Order of the British Empire, Officer's Cross of the Order of Merit of West Germany, Commander of France's Legion of Honor, membership in the Academy of Arts of the French Institute, often called "the Forty Immortals," and, from the United States, the Presidential Medal of Freedom.

Maestro Rostropovich's career as a conductor began in the Soviet Union in 1961. He was active in this capacity throughout the U.S.S.R. and Eastern Europe for many years before making his United States conducting debut in 1975. On October 4, 1977, he became music director of the National Symphony Orchestra, which today has taken a place among America's finest orchestras, a fact largely attributed to his leadership. Critics on four continents have praised the "transformation" of the National Symphony during his tenure.

As cellist, Maestro Rostropovich's artistry has been recognized for five decades. Considered by many to be the world's greatest living cellist, he has recorded virtually the entire cello repertoire and has inspired some

of this era's finest composers to create works especially for him.

As pianist, Maestro Rostropovich has often accompanied his wife, the acclaimed soprano Galina Vishnevskaya, in recital. His extensive discography also includes many performances in that role, and together they have toured the globe.

In all his performing areas, Maestro Rostropovich has been one of today's most positive forces for the creation of contemporary music. The list of those who have written for him is enormous, including Shostakovich, Prokofiev, Britten, and Bernstein. Through his inspiration, the existing solo cello repertoire has been vastly increased. As conductor and as cellist, he is viewed as a leading interpreter of the works of Shostakovich and Prokofiev, with whom he shared personal as well as professional relationships. He also had a close association with Benjamin Britten, and was for many years an artistic director of the Aldeburgh Festival. Currently he is president of the Evian Festival in France.

Maestro Rostropovich's musicianship has earned him numerous awards. His recordings have brought him the world's most coveted recording prizes, including the Grammy Award and the Grand Prix du Disque. He holds more than 30 honorary degrees, and 18 different nations have lavished more than 60 major awards upon him. Prior to leaving the U.S.S.R. in 1974 on an exit visa, he had received the Stalin Prize, had been named a People's Artist of the U.S.S.R., and was a recipient of the Lenin Prize, the nation's highest prize. At the Moscow Conservatory he taught for 26 years, and at the Leningrad Conservatory for seven. At the latter institution he was made Honorary Professor.

Maestro Rostropovich has given many performances in support of humanitarian efforts around the world. Among his many recent benefit concerts were five performances in Europe and the United States to aid the Armenian earthquake relief efforts. In recognition of his services to human rights, Maestro Rostropovich received the 1974 Annual Award of the International League of Human Rights and the 1985 Albert Schweitzer Award.



In Ann Arbor, Mstislav Rostropovich has shared his artistry with concertgoers on numerous occasions. He first appeared in 1965 as cello soloist with the Moscow Philharmonic, followed by a 1967 May Festival performance with The Philadelphia Orchestra. Cello recitals followed in 1972, 1975, 1980, and 1983. In 1975, he was both conductor and soloist in a benefit concert for the Musical Society and the School of Music, and his most recent appearance was in 1985, conducting the National Symphony Orchestra.



Wendy Warner made her professional debut with the National Symphony Orchestra a year ago and was shortly thereafter re-engaged for this North American tour. She had previously attracted regional and national attention with her astonishing record of competition successes, usually in fields of older contestants. Among these contests were the Chicago Symphony Orchestra's Illinois Young Performers Competition, leading to television appearances with that orchestra at age 14 and again at 16, and first prizes in the national competitions sponsored by the Chicago Violoncello Society, General Motors/Seventeen Magazine, the American String Teachers Association, and the Julius Stulberg Foundation.

The climax of Ms. Warner's competition achievements came in November 1990, when she won first prize in the Fourth International Rostropovich Competition in Paris, where she was one of the youngest contestants in a field ranging up to age 33. In May of this year, Warner was awarded a prestigious Avery Fisher Career Grant.

Now 19 years old, Wendy Warner began playing the cello at the age of six. She studied with Nell Novak at the Music Center of the North Shore in Winnetka, Illinois, from age seven through her high school years. Currently in her second year at the Curtis Institute of Music, she is a student of National Symphony Orchestra music director Mstislav Rostropovich, assisted by Glenn Garlick, a member of the Orchestra's cello section.



Her current season engagements include appearances with the Chicago Symphony, Bamberg Symphony (a ten-concert tour of Germany, led by Rostropovich), French Radio Philharmonic Orchestra, and other orchestras in Illinois, Arizona, and Montana.

Wendy Warner now makes her Ann Arbor debut with Maestro Rostropovich and the National Symphony.

The William R. Kinney Endowment

The University Musical Society has established an endowment in the name of the late William R. Kinney through the generous bequest in excess of a quarter of a million dollars from the longtime Ann Arbor resident and concertgoer. Reflecting Mr. Kinney's keen interest in and enjoyment of UMS presentations through the years, a concert will be funded annually in his name, beginning this evening with the National Symphony Orchestra conducted by Mstislav Rostropovich.

Mr. Kinney will also be honored posthumously by the Burton Tower Society, an organization created by the Musical Society to recognize those who provide future support for the Musical Society through their trusts, wills, estates, and insurance plans. Such an expression assures future audiences the same musical experiences that have enriched the lives of Ann Arbor area concertgoers for 112 years.



National Symphony Orchestra

MSTISLAV ROSTROPOVICH, *Music Director*

RANDALL CRAIG FLEISCHER, *Affiliate Artist/National Endowment for the Arts Conductor*

Violins

William Steck,
*Concertmaster,
David Lloyd Kreeger
Chair*

Elisabeth Adkins,
*Assoc. Concertmaster,
Cissy Patterson Chair*

Ricardo Cyncynates,
Asst. Concertmaster

Samuel Levy

Ralph Pfister

William Haroutounian

Edwin Johonnott

Luis Haza

Vernon Summers

Holly Hamilton

Hyun-Woo Kim

Linda Schroeder

George Marsh

Jane Bowyer Stewart

Dennis Piwowarski

Teri C. Lee

Charles Wetherbee,
Principal

William Bruni

Janet Perry

Jacqueline Anderson

Sheldon Lampert

Kathleen

Hinton-Braaten***

Charlotte Davis Paramore

James Carter

Desimont Alston

Perry Holley

Bryan Johnson

Lev Pekarsky

Peter P. Haase

Pavel Pekarsky

Violas

Roberto Díaz,
*Principal,
Mrs. John Dimick Chair*

William Foster
Asst. Principal

Ramon Scavelli

Carlos Quian

Murray Labman

Cynthia Jane Kitt

Lynne Edelson Levine

Denise Wilkinson

James Francis

Eric deWaardt

Nancy Bittner

Yun-Jie Liu

Cellos

John Martin,
*Principal,
Hans Kindler Chair,
The Strong Family and
the Hattie M. Strong
Foundation*

David Hardy,
Assoc. Principal

Robert Blatt

Janet Frank

Frederick Zenone

David Howard

Loran D. Stephenson

Yvonne Caruthers

Glenn Garlick

Steven A. Honigberg

David Teie

James Lee

Basses

Harold H. Robinson,
*Principal,
The Mars Family and
Mars Foundation Chair*

Robert J. Oppelt,
Asst. Principal

Donald Havas

Edward Skidmore

Richard Webster

Albert Webster

William Vaughan

Curtis Burris

Dennis C. Roy

T. Alan Stewart**

Harp

Dotian Levalier,
*Principal,
Frank R. & Margaret G.
Jelleff Chair*

Caroline Gregg*

Flutes

Toshiko Kohno,
*Principal,
Mrs. Demarest Lloyd
Chair*

Thomas Perazzoli,
Asst. Principal

Alice Kogan Weinreb

Carol Bean,
Piccolo

Oboes

Rudolph Vrbsky,
*Principal,
The Women's
Committee Chair*

Carol Stephenson,
Asst. Principal

William Wielgus

Richard White
English Horn

Clarinets

Loren Kitt,
Principal

Michael Rusinek

William R. Wright

E-flat Clarinet

Lawrence Bocaner
Bass Clarinet

Bassoons

Kenneth Pasmanick,
Principal

Linda Harwell,
Asst. Principal

Truman Harris

Lewis Lipnick,
Contrabassoon

Horns

Edwin Thayer,
*Principal,
National Trustees' Chair*

Laurel Bennert Ohlson,
Associate Principal

Sylvia Alimena

David Whaley

Daniel Carter

Scott Fearing

Trumpets

Steven Hendrickson,
*Principal,
Howard Mitchell Chair,
The Strong Family and
the Hattie M. Strong
Foundation*

Adel Sanchez,
Asst. Principal

David Flowers

Keith Jones

Trombones

Milton Stevens,
Principal

John R. Huling,
Asst. Principal
James Kraft
Matthew Guilford
Bass Trombone

Tuba

David L. Bragunier,
Principal

Timpani

Fred Begun,
*Principal,
Marion E. Glover Chair*

Charles Wilkinson,
*Asst. Principal,
Percussion*

Percussion

F. Anthony Ames,
*Principal,
The Hechinger
Foundation Chair*
Kenneth Harbison,
Asst. Principal
Albert Merz*

Keyboard

Lambert Orkis,
Principal

Organ

William Neil*

Personnel Manager

David L. Bragunier

Assistant Personnel Manager

Janet Perry

Assistant to the Personnel Manager

Laura Bligh

Stage Manager

B. Joel King

Librarians

Marcia Gittinger,
Librarian
Kristi Sloniger,
Assistant Librarian

The National Symphony Orchestra uses a system of revolving strings. In each string section, untitled members are listed in order of length of service.

*Regularly Engaged Extra Musician

**Orchestra Fellow, Music Assistance Fund

***Leave of Absence



Northern Telecom is proud of the part
we've played in tonight's performance.

Northern Telecom is honored to sponsor the Kennedy Center's National Symphony Orchestra 1991 North American Tour. As one of the world's largest manufacturers of telecommunications equipment, we're proud to support communication in one of its most beautiful forms—music.



TECHNOLOGY THE WORLD CALLS ON.™

National Symphony Orchestra Association Board of Directors

OFFICERS

Mr. Albert J. Beveridge III, *President*
Mr. Daniel K. Mayers, *Immediate Past President*
Mr. F. David Fowler, *Vice President/Treasurer*
Mrs. John E. Chapoton, *Vice President/Chairman of the Executive Committee*
Mrs. Vernon E. Jordan, Jr., *Secretary*
Mr. C. Victor Raiser II, *General Counsel*
Mrs. Mary P. Marsh, *Assistant Secretary*

HONORARY VICE PRESIDENTS

Mrs. Raymond E. Cox
Mrs. Jouett Shouse

DIRECTORS EMERITUS

Mrs. Cyrus S. Ching
Mrs. C. Leslie Glenn
Mrs. Eugene H. Rietzke

EXECUTIVE COMMITTEE

Composed of the officers of the Association, honorary vice presidents, members-at-large and the following:

Mr. Henry Strong/Mr. Christopher Wolf

Cochairmen, Development Committee

Mr. Mandell J. Ourisman, *Chairman, Endowment Committee*
Mr. Austin H. Kiplinger, *Chairman, Nominating Committee*
Mrs. Leonard L. Silverstein, *Chairman, Special Events*
Mrs. Harold W. Roher, *President, Women's Committee*

DIRECTORS

(in addition to officers, members of executive committee, and directors emeritus)

Mrs. John R. Alison
Mr. Robert W. Alvord*
Mrs. Calvin B. Andringa
Mrs. Robert Muse Bass
Mrs. Theodore C. Bedwell, Jr.
Mrs. Howard M. Bender
Mrs. Caryl S. Bernstein
Mr. Norman Bernstein
Mrs. Christopher T. Bever
The Honorable Livingston L. Biddle, Jr.
Mrs. Donald A. Brown
The Honorable Harold Brown
Mrs. Charles A. Camalier, Jr.
Mrs. A. James Clark
Mrs. Jeannine Smith Clark
Mr. Melvin S. Cohen
The Honorable William T. Coleman, Jr.
Mrs. Thomas L. Craven
Mr. Sheldon W. Fantle
Mr. Thomas H. Ferguson
Mrs. Robert T. Foley

Mrs. Nancy M. Folger
Mr. J. Edward Fowler
Mr. John G. Fox
Mrs. Melvin Gelman
Mr. Elliott S. Hall
The Honorable Sidney Harman
Dr. Anne Renouf Headley
Mrs. John W. Hechinger*
Mrs. Sophocles A. Hero
Mrs. Leamon G. Holliman
Mrs. Hadlai A. Hull
The Honorable Paul R. Ignatius*
Mr. Peter E. Kaplan
Mrs. Hans A. Klagsbrunn
Mr. Samuel Lehrman*
Mrs. John A. Logan
Mr. Charles T. Manatt
Mrs. Richard E. Marriott
Mrs. Virginia C. Mars*
Mrs. George C. McGhee
Mrs. Dorothy Pierce McSweeney*
Mrs. Pat Munroe
Evelyn Stefansson Nef

Mrs. Roger A. Neuhoff
Mr. William A. Nitze
Mr. Gerson Nordlinger, Jr.
Mr. Peter F. Nostrand*
Ms. Stephanie M. Phillipps
Mrs. Charles E. Phillipps
Mrs. Stephen W. Porter
Mr. Walter I. Pozen
Mr. Thomas J. Quigley*
Mrs. Henry Reich
Mrs. Robert M. Rosenthal
The Honorable Leonard L. Silverstein
Mr. Albert H. Small
The Honorable Roger L. Stevens
Mr. W. Reid Thompson
Mrs. Wynant D. Vanderpool, Jr.
Mr. Henry J. Werronen
Mr. John R. Worthington
Mr. Sidney S. Zlotnick

**Executive Committee member-at-large*

National Symphony Orchestra Association National Trustees

The National Trustees are an important resource for the National Symphony Orchestra. They offer counsel and guidance to the Board of Directors of the Association in matters regarding the national and international scope of the Orchestra's activities. Additionally, their financial participation assists the Orchestra's education program, projects, and national and international touring programs.

OFFICERS

Chairman: Mr. Noel Levine, *New York*
 Vice Chairman: Mr. Charles Wohlstetter, *New York*
 President: Mrs. Arnold Schwartz, *Connecticut*
 Vice President: Mrs. Bertram W. Klein, *Kentucky*
 Secretary: Mr. Gene A. Burns, *New Jersey*
 Treasurer: Mr. William A. Penner, *Illinois*
 Board of Directors Liaisons with Trustees: Mrs. Dorothy Pierce McSweeney
 Mrs. Stephen W. Porter

TRUSTEES

Mrs. Mary K. Abercrombie, <i>Idaho</i>	Mr. Richard N. Goldman, <i>California</i>	Mr. William J. Poorvu,
Mrs. William O. Bailey, <i>Connecticut</i>	Mr. Harry E. Gould, Jr., <i>New York*</i>	<i>Massachusetts</i>
Mr. George L. Ball, <i>New York*</i>	Mr. Christopher B. Hemmeter,	Mrs. Chesley Pruet, <i>Arkansas</i>
Mr. Gerald T. Ball, <i>Georgia</i>	<i>California</i>	Miss Marilyn J. Robinson, <i>Arizona</i>
Mr. Robert Muse Bass, <i>Texas</i>	Ms. Marifé Hernández, <i>New York*</i>	Mr. Philip E. Rollhaus, <i>Illinois</i>
Mrs. Thomas M. Beck, <i>Idaho</i>	Mrs. Charles W. Hoppe, <i>New York</i>	Lady Blanka Rosenstiel, <i>Virginia</i>
The Honorable William E. Brock	Mrs. Fitzgerald S. Hudson, <i>North</i>	Mr. Paul C. Schorr III, <i>Nebraska</i>
III, <i>Washington, DC</i>	<i>Carolina*</i>	Mr. S. Joel Schur, <i>New Jersey</i>
Mrs. John H. Bryan, Jr., <i>Illinois</i>	Mrs. Henri Keyzer-Andre, <i>Florida*</i>	Mrs. Frank E. Scott, <i>Nevada*</i>
Mrs. James H. Clement, <i>Texas</i>	Mrs. Henry L. Kimelman, <i>Virgin</i>	Mr. Victor N. Shafferman, <i>New York</i>
Mrs. Tatiana B. Copeland, <i>Delaware</i>	<i>Islands</i>	Mr. R. L. Sias, <i>Oklahoma</i>
The Honorable Shelby Cullom	Mrs. Norman V. Kinsey, <i>Louisiana*</i>	Mrs. Lewis L. Strauss, <i>Virginia</i>
Davis, <i>New York</i>	Mr. Allen D. Kohl, <i>California</i>	Mrs. Caspar W. Weinberger, <i>Maine</i>
Mr. Marvin R. Engel, <i>Alabama</i>	Ms. Isabelle Leeds, <i>New York</i>	Mr. Von H. Whitby, <i>Utah</i>
Mrs. George R. Farrell, <i>Florida</i>	Mrs. Herbert D. Mendel, <i>Michigan</i>	Mrs. Lynn Wolfson, <i>Florida</i>
Mrs. Robert W. Galvin, <i>Illinois</i>	Mr. Russell R. Miller	Dr. Omar Zawawi, <i>Oman</i>
Mr. Jerry D. Geist, <i>New Mexico</i>	Mrs. Robert A. G. Monks, <i>Maine</i>	
Mrs. Patti H. Gerber, <i>Illinois</i>	The Honorable Lillian Nicolosi	
Mrs. Kenneth R. Giddens, <i>Alabama</i>	Nall, <i>Nevada</i>	<i>*Executive committee member-at-large</i>

National Symphony Orchestra Tour Staff

Stephen Klein, Executive Director
 Richard B. Hancock, General Manager

Steven Aberg, Director of Operations
 Marc Breslaw, Director of Development
 Nadya Efremov, Executive Assistant to the Music Director
 Patricia O'Kelly, Managing Director of Media Relations

Thank You Encore!

The much needed and greatly appreciated gifts of our Encore members make great music happen.

The list below includes individuals who have donated to the University Musical Society from July, 1990 through September 3, 1991. If you should notice an error or omission, we sincerely apologize, and would appreciate a call at your earliest convenience (747-1178).

The University Musical Society would also like to thank those generous donors who wish to remain anonymous.

Individuals

BRAVO SOCIETY

Anonymous
Estate of William R. Kinney
Herbert Sloan

CONCERT MASTER

Dr. and Mrs. Robert Aldrich
Herb and Carol Amster
Wilma Steketee-Bean
Dr. and Mrs. James H. Botsford
Mr. and Mrs. Carl A. Brauer, Jr.
Carol and Irving Smokler
Dr. and Mrs. Harry A. Towsley
Ron and Eileen Weiser

LEADER

Catherine S. Arcure
Mary Steffek Blaske and Thomas H. Blaske
Margaret and Douglas Crary
Mr. and Mrs. Thomas C. Evans
Ken, Penny and Matt Fischer
John and Esther Floyd
Dale and Marilyn Fosdick
Mr. and Mrs. Edward P. Frohlich
Mr. and Mrs. Howard S. Holmes
Pat and Kathy Long
Sally and William C. Martin
Mr. and Mrs. Roger Maugh
Paul and Ruth McCracken
Dr. and Mrs. Joe D. Morris
John and Dorothy Reed
David T. Simmons
Michael B. Staebler and Rebecca McGowan

Mr. and Mrs. John C. Stegeman
Mary and Ron Vandenbelt
Marina and Robert Whitman
Paul and Elizabeth Yhouse

GUARANTOR

Mr. and Mrs. Johnny W. Barfield
P.E. Bennett
Richard S. Berger
Maurice and Linda Binkow
Mr. and Mrs. E. Robert Blaske
Daniel T. Carroll and Julie A.C. Virgo
Mr. and Mrs. John Alden Clark
Mr. and Mrs. David S. Clyde
Mr. and Mrs. Roland J. Cole
H. Richard and Florence Crane
Dennis Dahlmann
Jack and Alice Dobson
William T. Dobson and Mary Hunter
Dobson
Martin and Rosalie Edwards
Mrs. George H. Forsyth
Mr and Mrs. Edward O. Gilbert
Mr. and Mrs. Britton L. Gordon
Mr. and Mrs. Robert C. Graham
Miss Dorothy Greenwald
Judith A. Heekin
Robert and Joan Howe
James R. and Millie Irwin
Richard and Nancy Judge
Thomas E. and Shirley Y. Kauper
Elizabeth E. Kennedy
Alexander Krezel
Richard C. and Jacqueline Lewis
Mr. and Mrs. Carl J. Lutkehaus, Jr.
David W. McComb
Ted McOmber
Mr. and Mrs. Cruse W. Moss
William R. and Joan J. Olsen
Mr. and Mrs. Charles Overberger
William and Mary Palmer
Mr. Randolph Paschke
Dory and John Paul
Maxine and Wilbur K. Pierpont
Tom and Mary Prancing
Mr. and Mrs. Gail W. Rector
Ginny and Ray Reilly
Mary Caroline Rottschafer
Mr. and Mrs. Harold Y. Sakoda
Gary and Caren Sandall
Richard and Norma Sams
Paul and Betty Snearline
Gerard H. and Colleen Spencer
Dr. Hildreth H. Spencer
Dr. and Mrs. Jeffrey K. Stross
Maya Savarino and Raymond Tanter
Mr. and Mrs. Robert R. Tisch
Jerold G. Utsler, M.D.
Dr. and Mrs. Francis V. Viola III
Mr. and Mrs. Theodor R. Von Voightlander

Mr. and Mrs. Marc von Wyss
Martha Wallace and Dennis White
Dr. and Mrs. Andrew S. Watson
Jerry and Elise Weisbach
Shelly F. Williams
Len and Maggie Wolin

SPONSOR

Dr. and Mrs. Gerald D. Abrams
Gardner and Bonnie Ackley
William J. Adams
Gigi and Tim Andresen
Bob and Martha Ause
Bradford and Lydia Bates
Mr. Hilbert Beyer
Howard and Margaret Bond
Charles and Linda Borgsdorf
Allen and Veronica Britton
David and Sharon Brooks
Mrs. Susan S. and Wesley M. Brown
Mrs. Wellington R. Burt
Jean M. and Kenneth L. Casey
Leon and Heidi Cohan
Mr. and Mrs. R. G. Conger
Katharine and Jon Cosovich
Dr. and Mrs. Ronald Cresswell
Ray and Eleanor Cross
Dr. and Mrs. Preston V. Diits, Jr.
Colby and John C. Duffendack
Mr. Greg Fenerli
Anne and James Ford
Dr. and Mrs. William L. Fox
Judy and Richard Fry
Harriet and Daniel Fusfeld
Henry and Beverly Gershowitz
Elmer G. Gilbert and Lois M. Verbrugge
William and Ruth Gilkey
Drs. Sid Gilman and Carol G. Barbour
Fred and Joyce Ginsberg
Jerry and Mary K. Gray
Seymour D. Greenstone
Carl E. and Julia H. Guldberg
Marcia and John Hall
Mr. and Mrs. Elmer F. Hamel
Harlan and Anne Hatcher
Debbie and Norman Herbert
Mr. and Mrs. William B. Holmes
Dr. and Mrs. Verne L. Hoshal, Jr.
Mrs. Linda Samuelson and Joel Howell
Ralph and Del Hulett
Keki and Alice Irani
Gretchen and John Jackson
Keith and Kay Jensen
David and Sally Kennedy
Mrs. Edith Staebler Kempf
Howard King and Elizabeth Sayre-King
Barbara and Charles Krause
Mr. and Mrs. Lee E. Landes
Professor and Mrs. John C. Lee
Carolyn and Paul Lichter
Dean S. Louis, M.D.
Dr. and Mrs. Edwin L. Marcus
Jack and Joanne Martin
Larry and Rowena Matthews
Mr. and Mrs. John M. McCollum
Charlotte McGeoch
Richard and Elizabeth McLeary

Robert and Doris Melling
Dr. Barry Miller
M. Haskell and Jan Barney Newman
Marylen and Harold Oberman
Dr. and Mrs. T. N. T. Olson
Mr. R.V. Palmer
Lorraine B. Phillips
Maj. Gen. and Mrs. Robert R. Ploger
USA (ret.)
P.M. and E.W. Pollack
William and Christine Price
Elisabeth J. Rees
Dr. and Mrs. Rudolph E. Reichert
Glenda Renwick
Mr. H. Robert Reynolds
William and Katherine Ribbens
Mr. and Mrs. Stephen J. Rogers
Amnon and Prudence Rosenthal
Mrs. Bernard J. Rowan
Mrs. Richard C. Schneider
Julianne and Michael Shea
Constance Sherman
Mrs. Charles A. Sink
Mr. and Mrs. Michael J. Sprecher
Neil and Burnette Staebler
Mr. Thomas D. Steiger
Victor and Marlene Stoeffler
Mrs. John D. Stoner
Elizabeth L. Stranahan
Edward Surovell and Natalie Lacy
Dr. and Mrs. E. Thurston Thieme
Mrs. Mischa Titiev
Jonathan Trobe and Joan Lowenstein
Mr. and Mrs. Herbert H. Upton, Jr.
Joyce A. Wahr
Dr. and Mrs. Philip C. Warren
Robert O. and Darragh H. Weisman
Brymer and Ruth Williams
Thomas and Iva Wilson
Dr. and Mrs. S. B. Winslow
Mr. R. Roger and Bette F. Zauel
Martin and Nancy Zimmerman
Mr. and Mrs. Ronald G. Zollars
Pinchas Zukerman

BENEFACTOR

Armand and Marilyn Abramson
Bernard and Raquel Agranoff
Mr. and Mrs. Roy I. Albert
Judith Dow and Robert Alexander
Anne and George Amendt
Joan and David Anderson
David Andrea
Bert and Pat Armstrong
Mr and Mrs. Max K. Aupperle
Jean and Gaylord Baker
M. A. Baranowski
Mr. and Mrs. Cyril H. Barnes, Jr.
Donald C. Barmette, Jr.
Dr. and Mrs. Mason Barr, Jr.
Dr. and Mrs. Robert Bartlett
Mr. and Mrs. Raymond O. Bassler
Hermann and Hella Baumann
Neal Bedford and Gerinda Melchior
Henry J. Bednarz
Mary-Martha and William Beierwaltes
Dr. and Mrs. Rodney R. Bentz
Ruth Ann and Stuart J. Bergstein

Raymond and Janet Bemreuter
Mr. and Mrs. Philip C. Berry
Suzanne A. and Frederick J. Beutler
Carl and Pauline Binder
Steve Binder
James and Virginia Birchler
Elizabeth S. Bishop
Visvaldis Biss
Bob and Liz Bitterman
C. John Blankley and Maureen F. Foley
Professor H. Harlan Bloomer
Mr. and Mrs. Milford Boersma
Ruth and Jay Bolt
Sue and Bob Bonfield
Edward and Ruth Bordin
William Brashear
Ruth and Jay Bolt
Ernie and Betsy Brater
Mr. and Mrs. Lloyd Bridges
Norman and Doreen Bristol
Helen L. Brokaw
Hugh C. and Ella M. Brown
Jeannine and Robert Buchanan
Steve Buchbinder
Laurence and Valerie Bullen
Arthur and Alice Burks
Helen S. Butz
Jean W. Campbell
Charles and Martha Cannell
Mr. and Mrs. David Caplan
Bruce and Jean Carlson
Professor Brice Camahan
Mr. and Mrs. Roy A. Carpenter
Mr. and Mrs. Tsun Chang
Mr. and Mrs. Raymond S. Chase
Joan and Mark Chesler
David Chivas
Maurice and Margo Cohen
John and Penelope Collins
Kenneth Collinson
Wayne and Melinda Colquitt
Mr. William V. Coltre
Anne M. and Edward J. Comeau
Gordon and Marjorie Comfort
Alfred and Georgia Conard
M.C. Conroy
James and Constance Cook
Lolagene C. Coombs
Gage R. Cooper
Alan and Bette Cotzin
Clifford and Laura Craig
Richard and Penny Crawford
Pedro and Carol Cuatrecasas
Dean and Mrs. John D'Arms
Peter and Susan Darrow
Jane and Gawaine Dart
Dr. and Mrs. Charles Davenport
Mr. and Mrs. H. W. Davenport
Roy C. and Donna B. Davis
Ronald and Dolores Dawson
James M. Deimen
Elena and Nicholas Delbanco
Ellwood and Michele Derr
Judy and Steve Dobson
Mrs. Carl T. Doman
Dr. and Mrs. Edward F. Domino
William Gould and Katherine Keene Dow

Mr. and Mrs. Robert S. Dunham
Charles and Dorothy Dybvig
Evelyn Eccles, M.D.
Kenneth C. and Kathryn E. Eckerd
Charles and Julia Eisendrath
Emil and Joan Engel
David and Lynn Engelbert
Bary and Joyce Eisenstein
Mark and Patricia Enns
Dr. Stewart Epstein
Adele Ewell
Daniel and Judith Fall
Claudine Farrand and Daniel Moerman
Dr. and Mrs. Stefan S. Fasans
Dr. and Mrs. John A. Faulkner
Inka and David Felbeck
Dr. and Mrs. Irving Feller
Dr. James F. Filgas
Sidney and Jean Fine
Sally Fink and Stephen Josephson
Mrs. Gerald J. Fischer
Ray and Patricia Fitzgerald
Mr. and Mrs. Robben Fleming
Dr. and Mrs. George W. Ford
Phyllis Foster
Ronald and Deborah Freedman
Mr. and Mrs. Douglas D. Freeth
Victor and Marilyn G. Gallatin
Mr. and Mrs. Garnet R. Garrison
Rosemary and Wood Geist
Dr. and Mrs. Thomas Gelner
Beverly and George Gehrter
Mr. and Mrs. Clement Gill
James and Janet Gilsdorf
Paul and Anne Glendon
Melvyn and Muriel Gluckman
Dr. Alexander Gotz
Mrs. William Grabb
Ruth B. and Edward M. Gramlich
Whit and Svea Gray
Dr. and Mrs. John F. Greden
Mr. and Mrs. J. D. Green
Sharon and Lazar Greenfield
Louise and Bill Gregory
Donald and Elizabeth Gresch
John R. and Helen K. Griffith
Werner H. Grilk
Don P. Haefner and Cynthia J. Stewart
Harry L. and Mary L. Hallock
Mrs. Robert Hamilton
Mr. and Mrs. Walter F. Hamilton, Jr.
Mr. and Mrs. Charles Harris
Hugh L. Harsha
Clifford and Alice Hart
Harold and Anne L. Haugh
Douglas A. and Anne M. Hayes
Kenneth and Jeanne Heiningner
Fred and Joyce Hershenson
Dr. Bertram Herzog
Herb and Dee Hildebrandt
Ms. Barbara Hill
Charles and Virginia Hills
Maurice B. Hodges
Louise Hodgson
Robert and Frances Hoffman
John and Maurita Holland
Mrs. Janet Woods Hoobler

Mr. and Mrs. Zoltan L. Horvath
Mrs. Teresa Huang
Mrs. V. C. Hubbs
Edward E. Hucke
Ray and Jude Huetteman
Frederick G. L. Huetwell
Mrs. George R. Hunsche
Mr. and Mrs. David D. Hunting, Jr.
Patricia and John Huntington
Ann K. Irish
Mr. and Mrs. Alan Israel
John and Joan Jackson
Donald E. Jahncke
Mr. and Mrs. Emil H. Jebe
Wallie and Janet Jeffries
Paul D. Johnson
Mr. and Mrs. Richard A. Jones
James J. Judson
Cynthia Kabza and Robert Vecruey
Robert L. and Beatrice H. Kahn
Mr. and Mrs. Thomas Kallewaard
Dr. and Mrs. Mark S. Kaminski
Elizabeth Harwood Katz
Mr. Herbert Katz
Mr. and Mrs. Robert Katz
Anna M. Kauper
Mr. and Mrs. Jacob Kellman
Mary L. Kemme
John B. Kennard, Jr.
Richard and Ann Kennedy
Emily and Ted Kennedy
Mr. Richard E. King
Dr. and Mrs. Costas Kleanthous
Dr. David E. and Heidi Castleman Klein
Mrs. Karl S. Klicka
Hermine R. Klingler
Mr. and Mrs. A. William Klinke II
Carolyn and Jim Knake
Masato and Koko Koreeda
Dimitri and Suzanne Kosacheff
Mr. and Mrs. Edward Kowaleski
Christopher J. Kresge
Alan and Jean Krusch
John A. and Justine Krsul
Mr. and Mrs. Leo Kulka
Barbara and Michael Kusisto
Mae and Arthur Lanski
Mr. and Mrs. Henry M. Lapeza
Dorothy and John Lapp
George A. Lavoie
John K. Lawrence
Fred and Ethel Lee
Prof. and Mrs. John C. Lee
John and Ann Leidy
Mr. and Mrs. Fernando S. Leon
Professor and Mrs. Harold M. Levinson
Allen Lichter and Karen Eve Simon
Jody and Leo Lighthammer
Vi-Cheng and Hsi-Yen Liu
Harold J. Lockett, M.D.
Mr. and Mrs. David G. Loesel
Leslie and Susan Loomans
Dr. Robert G. Lovell
Robert and Pamela Ludolph
Lawrence N. Lup
Edward and Barbara Lynn
Brigitte and Paul J. Maassen

Mr. and Mrs. Stephen G. Maggio
Virginia Mahle
Alan and Carla Mandel
James and Ingrid Martin
Marilyn Mason
Margaret Massialas
Mr. Don Mathison
Mrs. Lawrence Maugh
Mr. and Mrs. Donald C. May, Jr.
Martha Mayo and Irwin J. Goldstein
Margaret and Harris McClamroch
Mrs. Lester McCoy
W. Bruce and Mary McCuaig
Griff and Pat McDonald
Mr. F. N. McOmber
Martha and Dady Mehta
Robert and Doris Melling
Ann and Robert Meredith
Herman and Bernice Merte, Jr.
Mr. and Mrs. Walter Metzger
Mr. and Mrs. Francis L. Michaels
Dr. and Mrs. Leo J. Miedler
Mrs. Vaden W. Miles
H. Dean and Dolores H. Millard
George Miller
Jack and Carmen Miller
James M. Miller
Dr. and Mrs. James C. Mitchiner
C. Richard and Sharon Molenaar
Mr. and Mrs. Thomas Monaghan
Dr. and Mrs. Richard A. Morin
Dr. Eva L. Mueller
Frederick C. Neidhardt and Germaine
Chipault
Ms. Lois Nelson
Sarah Winans Newman
Virginia and Gordon Nordby
Frederick Odell, Jr., M.D.
Lois and Michel Oksenberg
Nels and Mary Olson
Dr. and Mrs. Mark B. Orringer
Mr. and Mrs. David W. Osler
John and Penny Owen
Richard and Miranda Pao
Colonel and Mrs. Clare Passink
Elizabeth and Beverly Payne
Professor and Mrs. J. Raymond Pearson
Mr. and Mrs. Frederick R. Pickard
Mr. and Mrs. William Pierce
Stephen and Tina Pollock
Mr. and Mrs. L. Norris Post
Cynthia and Roger Postmus
Philip and Kathleen Power
Lawrence and Ann Preuss
Jerry Pryor
Hugo and Sharon L. Quiroz
Katherine R. Reebel
Jim and Bonnie Reece
La Vonne and Gary Reed
Donald H. Regan and Ms. Elizabeth
R. Axelson
Dr. and Mrs. Richard D. Remington
Duane and Katie Renken
William and Mary Revelli
Paul Rice
Jack and Margaret Ricketts
Tom and Sally Roach

Stephen and Sara Rogers
Mary R. Romig-de Young
Robert and Joan Rosenblum
Gay and George C. Rosenwald
Daria A. Rothe
Dr. Nathaniel H. Rowe
Theodore and Joan Sachs
Jerome and Lee Ann Salle
Dr. and Mrs. Albert J. Sayed
Mr. and Mrs. Allan Schenck
Dr. and Mrs. John E. Schenk
Andy Achenbaum and Mary Schieve
Dr. and Mrs. David W. Schmidt
Mr. and Mrs. Mark Schmidt
G. M. and M.F. Schmit
Charles and Meeyung Schmitter
Charlene and Carl Schmult
Dr. and Mrs. David Schottenfeld
Hollis and Martha Showalter
Drs. David and Monica Scheingart
Mr. and Mrs. Edwin Schultz
John J. H. Schwarz, M.D.
Harriet and Marvin Selin
Janet C. Sell
Richard and Susan Shackson
Michael and Janet Shatusky
Victoria Sheagren
George and Gladys Shirley
Hollis and Martha Showalter
Edward and Marilyn Sichler
George and Helen Siedel
Irma J. Sklenar and Robert John Sklenar
Mr. and Mrs. Carl R. Smith
Mr. and Mrs. Robert W. Smith
Dr. and Mrs. William R. Solomon
Renate and Richard Soulen
Neil and Burnette Staebler
E. Lloyd and Theodore J. St. Antoine
Betty M. Stark
Mrs. Ralph Steffek
Kenneth and Edith Stephanz
Dr. and Mrs. Stanley Stradius
James R. and Jeraldine M. Suits
Mr. and Mrs. J. Wilner Sundelson
Steven and Mary Swanson
Dr. Jean K. Takeuchi
Gerald W. and Susan J. Tarpley
Mr. and Mrs. Robert M. Teeter
James L. and Ann Telfer
Scott Bennett Terrill
Richard and Yvonne Teske
George and Mary Tewksbury
Mary H. Thieme
John and Ann Treat
Paul and Barbara Trudgen
Mr. and Mrs. Stanley Turner
Mr. and Mrs. Alvan Uhle
Dr. and Mrs. John F. Ullrich
Donald and Wendy Urquhart
Madeleine Vallier
Jack and Marilyn van der Velde
Bram and Lia Van Leer
Fred and Carole van Reesema
Dr. Detlof von Berg
Warren H. and Florence S. Wagner
Bruce and Raven Wallace
Karl and Karen Weick

Lawrence A. Weis and Sheila Johnson
Angela and Lyndon Welch
Mr. and Mrs. B. Joseph White
Janet F. White
Dr. and Mrs. Max Wicha
Marion T. Wirick
Dr. Grant J. Withey
Noreen Ferris and Mark Wolcott
Dr. and Mrs. Ira S. Wollner
Colonel and Mrs. Ernest A.H. Woodman
Richard and Dixie Woods
Patricia A. Woodworth
Mr. and Mrs. A. C. Wooll
Stan and Pris Woollams
Charles R. and Jean L. Wright
Phyllis Wright
Dr. and Mrs. Clyde Wu
Mr. Donald W. Wyche
Leslie and Tadataka Yamada
Mr. and Mrs. A. Michael Young
Mr. and Mrs. Edwin H. Young

PATRON

Victor Adamo
Barbara and Jim Adams
Tim and Leah Adams
Mr. and Mrs. Gordon E. Allardyce
Forrest Alter
Mr. and Mrs. David Aminoff
Harlene and Henry Appelman
Dr. and Mrs. Allan A. Ash
Nancy and Eric M. Aupperle
Dr. and Mrs. Noyes L. Avery
Shirley and Donald Axon
Jerald and Virginia Bachman
Robert L. Baird
James R. and Lisa Baker
Barbara and Daniel Balbach
Ms. Gwendolyn L. Ball
Andrea and Simon Bare
Gail Davis Barnes
Dr. Ruth M. Barnard
Mr. and Mrs. Mark Bartholomy
Gail Bauer
Dr. and Mrs. Jere M. Bauer
Susan Bay
Mr. Ralph Beebe
Robert B. Beers
Soly S. Bencuya
Harry and Betty Benford
Ronald and Linda Benson
Helen V. Berg
Reuben and Barbara Levin Bergman
Mr. and Mrs. S.E. Berki
Dr. and Mrs. Gerald Berlin
Mr. and Mrs. Mark A. Bernhardt
Dr. and Mrs. John C. Bilello
Mr. and Mrs. Guido A. Binda
Joan and Howard Binkow
John E. Bloom
Dr. and Mrs. Lynn W. Blunt
Beverly J. Bole
Robert and Sharon Bordeau
Gil and Mona Borlaza
Thomas Brewer
Caesar and Luan Briefer
Mr. and Mrs. Robert P. Briggs

Dr. and Mrs. William D. Briggs
Judge Kenneth Bronson
Dr. and Mrs. Arch Brown
Donald R. and June C. Brown
Ms. Michelle A. Brown
Morton B. and Raya Brown
Sylvia C. Brown
Dr. Joachim Bruhn
Mrs. Webster Brumbaugh
John H. and Barbara Everitt Bryant
Mrs. Hempstead S. Bull
Sibyl Burling
Marjorie H. Burnell
Mr. and Mrs. Richard J. Burstein
Marilyn Buss
Letitia J. Byrd
Mrs. Theodore Cage
Dr. and Mrs. Darrell A. Campbell
Ms. Margot Campos
Brad Canale
Isabelle Carduner
Jim and Priscilla Carlson
Jeannette and Robert I. Carr
Dr. and Mrs. James T. Cassidy
Mary and David Chambers
Ms. Kathran Chan
Mr. and Mrs. Nicholas G. Chapekis, Sr.
J. Wehrley and Patricia Chapman
Ms. Linda Chatters
Jean Chenoweth
Dr. Kyung and Young Cho
Prof. and Mrs. Donald Cleveland
Eric Coates
Mrs. Bennett J. Cohen
Blanche Cohen
Howard and Vivian Cole
Mr. Donald A. Collins
Jeffrey and Cynthia Colton
Mr. and Mrs. L. Thomas Conlin
Sandra S. Connellan
Bill and Bonnie Coombe
Robert and Charlotte Copp
Dr. and Mrs. Arnold G. Coran
Marjorie A. Cramer
Dr. Mary C. Crichton
Mr. and Mrs. Harry Cross
Jean and James I. Crump
Roger A. and Elizabeth E. Cunningham
Audrey and Edward Curtis
Mr. Orien Dalley
Mr. and Mrs. Robert Damschroder
Paul and Mary Ellen Danos
Mr. and Mrs. Arthur W. Davidge
James A. Davies
Dr. and Mrs. James H. Davis
Philip C. Davis
Ms. Pamela M. Day
Jean and John Debbink
Ferol and H.T. Decker
Dr. and Mrs. Raymond F. Decker
Mildred F. Denecke
Robert K. and Annie C. Denison
Benning and Elizabeth Dexter
Robert and Linda Diebold, Jr.
Nelson and Eleanor Dingle
Ms. Della DiPietro
Douglas and Ruth Doane

Dr. and Mrs. Edward R. Doezema
Thomas and Esther Donahue
Dr. and Mrs. Steven Donn
Dick and Jane Dorr
Eugene and Elizabeth Douvan
Roland and Diane Drayson
Allan and Cecilia Dreyfuss
Dr. and Mrs. Howard V. Dubin
Nancy Griffin DuBois
Ivan and Betty Anne Duff
Rhetaugh G. Dumas
Richard F. Dunn
Morgan and Sally Edwards
Dr. Alan S. Eiser
Judge and Mrs. S.J. Elden
Mrs. Genevieve Ely
Mackenzie and Marcia Endo
Mr. William Ensminger
Dr. and Mrs. J.L. Epstein
Mr. and Mrs. Fred Erb
Mr. and Mrs. Donald Eschman
Joel L. Evilsizer
Karen and Mark Falahee
Dr. and Mrs. Harvey Falit
Michael and Ann Feeney
Dr. and Mrs. George J. Feldman
Phil and Phyllis Fellin
Mrs. Carl H. Fischer
Charles and Mary Jane Fisher
Mr. and Mrs. Melvin J. Flamenbaum
Stephen and Suzanne Fleming
Jennifer and Guillermo Flores
Mr. and Mrs. Ernest Fontheim
David A. Fox and Paula L. Bockenstedt
Mr. and Mrs. Howard P. Fox
Joanna and Richard Friedman
Gail Fromes
Philip and Renee Frost
Bart and Fran Frueh
Mr. Mack Fuhrer
Rebecca and Bruce Gaffney
Lourdes and Otto Gago
Frances M. Gardner
Mrs. Don Gargaro
Stanley and Priscilla Gam
Professor and Mrs. David M. Gates
Mr. and Mrs. Robert C. Gatzke
Helen Gay
James and Jane M. Gay
Michael Gerstenberger
Ronald Gibala and Janice Grichor
Allan Gibbard and Beth Genne
Dr. and Mrs. Paul W. Gikas
Mr. and Mrs. Robert Gilbert
Robert and Barbara Gockel
Mrs. Eszter Gombosi
Jesse E. and Anitra Gordon
Keiko Goto
Adon A. Gordus
Vivian Sosna Gottlieb and Norm Gottlieb
Elizabeth Needham Graham
Bob and Lisa Green
Dr. and Mrs. Leslie M. Green
Shirley Green
Daphne and Raymond Grew
Susan and Mark Griffin
Mr. and Mrs. James R. Griffith

Dr. Howard B. Gutstein
James and Veronica Haines
George N. and Katherine C. Hall
Mrs. William Halstead
Margo Halsted
Stephen G. and Mary Anna Harper
Susan R. Harris
Walter and Dianne Harrison
Robert and Sherry Hatcher
Larry and Jean Hauptman
Kathleen L. Hawkins
William F. Hayden
Mr. and Mrs. Robert L. Hayes
Prof. Lorna Haywood
John Henkel and Jacqueline Stearns
Margaret Martin Hermel
Mr. and Mrs. E.A. Hershey
Ms. Sandra L. Higgins
Mr. and Mrs. Thomas Hilbish
Dr. and Mrs. W. A. Hiltner
John and Florence Hinman
Lynn L. Hobbs
Julian and Diane Hoff
Mr. Matthew C. Hoffmann
Frederic and Elizabeth House
Margaret Houser
Graham and Mary Jean Hovey
Sally Howe
Harry and Ruth Huff
Dr. and Mrs. James F. Huffman
Ronald and Gaye Humphrey
Ann D. Hungerman
Donald and Lynn Hupe
Mr. and Mrs. Russell L. Hurst
Dr. Dorothy A. Huskey
Robert B. and Virginia A. Ingling
Perry Elizabeth Irish
Mitzi and Sam Irwin
Esther Ann Jackson
Mr. and Mrs. Z. J. Jania
John M. Jenks
Jean and Kenneth Jochim
Mr. and Mrs. Donald L. Johnson
Mr. and Mrs. Paul G. Johnson
John and Linda K. Jonides
Mr. and Mrs. Joseph Juett
Dr. Stevo and Mrs. Susan Julius
Mr. and Mrs. Wilfred Kaplan
Alex and Phyllis Kato
Suzanne Kaufman
Mr. Hiroki Kawata
Mr. John B. Kennard, Sr.
Thomas E. Kenney
Robert L. Keyes
Dr. and Mrs. Paul Kileny
Mr. and Mrs. Charles E. Kimmel
John R. Alexander and Ms. Carolyn King
Rhea and Leslie Kish
Mr. and Mrs. Arthur W. Klinke
Mr. John Koening
Mr. and Mrs. Joseph J. Kokoszka
Jerome and Geraldine Koupal
Alexander Krezel
Mr. and Mrs. Samuel Krimm
Mr. and Mrs. Arnold H. Kuethe
Mr. and Mrs. George H. Kuper

Rayburn L. Howland and Katherine E. Kurtz
Dr. and Mrs. Richard A. Kutcipal
Dr. and Mrs. Bert La Du, Jr.
Dr. Barbara J. LaHood and Archie Cameron Brown
Mr. and Mrs. Seymour R. Lampert
LaVonne Lang
Dr. Donald and Lois Largo
Mr. and Mrs. Philip Lawler
Robert and Leslie Lazerin
Chuck and Linda Leahy
Mr. and Mrs. C. F. Lehmann
Mr. and Mrs. William C. Lighthall
Lawrence B. Lindemer
Dr. and Mrs. Stephen Loftus
Mr. and Mrs. E. Daniel Long
Peter A. Long
Luisa Lopez-Grigera
Florian A. Lux
Ms. Marcy MacMahan
Mark Mahlberg
Suzanne S. and Jay J. Mahler
Claire and Richard Malvin
Melvin and Jean Manis
George J. Marketos
Rhoda and William Martel
Robert S. and Margaret R. Martin
Dr. and Mrs. Josip Matovinovic
Elaine J. McFadden
John McGowan
Mr. and Mrs. W. J. McKeachie
Professor and Mrs. Gustav Meier
Jerry and Rhona Meislik
Mr. and Mrs. Warren A. Merchant
Eva and Alfred Meyer
Don and Lee Meyer
Mr. Gordon R. Metzger
Mr. and Mrs. A.S. Mignery, Jr.
Myrna and Newell Miller
Timothy and Patricia Miller
Kristine Miller-Pinti
John and Dorothy Mohler
Arnold and Gail Morawa
Mr. James N. Morgan
Dr. and Mrs. George W. Morley
Miss Anne Moroun
Rona and Cyril Moscow
Mary Moss
Trevor Mudge and Janet Van Valkenburg
Ms. Anna Hillenius Muller
Dr. Dorothy V. Mummery
John W. and Ruth A. Munger
Gavin Eadie and Barbara Murphy
Dr. and Mrs. Gunder A. Myran
Rosemarie Nagel
Dr. and Mrs. James V. Neel
Wallace E. Newcomb
George J. Nichols
Mr. and Mrs. Marvin Niehuss
Mrs. A. Geoffrey Norman
Mr. and Mrs. Richard S. Nottingham
Garrick Ohlsson
Bill and Marguerite Oliver
Mr. and Mrs. J. L. Oncley
Helen L. Osterlin
Fred and Barbara Outwater

William and Janet Paige
Mrs. George L. Palmer
Dr. and Mrs. Sujit K. Pandit
Donna D. Park
David and Linda Parr
Mr. and Mrs. Brian P. Patchen
Ara and Shirley Paul
Ruth and Joe Payne
Mr. Sumer Pek
Roy Penchansky and Elizabeth W. Bates
Thomas V. and Stephanie Peterson
Mr. and Mrs. Albert F. Petrosky
Mr. and Mrs. Leo Petrosky
Mr. and Mrs. D. Maynard Phelps
Jim and Julie Phelps
Mr. and Mrs. Robert C. Pierce
Sharon Pignanelli
Dr. and Mrs. Bertram Pitt
Donald and Evonne Plantinga
Mr. and Mrs. Robert H. Plummer
Senator Lana and Professor Henry Pollack
Susan Pollay and Bruce Watkins
Norman and Anna Mary Postma
Mary and Robert Pratt
Bill and Diana Pratt
Margaret Prendergast
Mrs. Dorothy M. Price
Ernst Pulgram
Mrs. Tad Rae
Laurie A. and Haran Craig Rashes
Susan L. Rasmussen
William and Mary Rave
Dr. and Mrs. Robert Rawitscher
Russell and Nancy Reed
Dr. and Mrs. James W. Reese
Dorothy R. and Stanislaw Rehak
Caroline Rehberg
Mr. and Mrs. G. Robert Richards
Mr. and Mrs. F. E. Richart
Frances Greer Riley
M. A. Ritter
Peter Roberts and Shirley Casebolt
James and Marietta Robinson
Willard and Mary Ann Rodgers
Mary K. Roeser
Dr. and Mrs. Raymond Rose
Dr. and Mrs. John Rosella
Gustave and Jacqueline Rosseels
Charles and Anne Rubin
George and Matilda Rubin
Jonathan Rubin and Gretta Spier
Dolores and Thomas E. Ryan
Mitchell and Carole Rycus
John and Reda Santinga
Herbert E. and Patricia Sawin, II
Mr. Donald Schmaltz
Courtland and Inga Schmidt
Drs. Robert J. and Franziska I. Schoenfeld
Gerald and Sharon Schreiber
Professor Thomas J. and Ann Sneed Schriber
Marshall S. Schuster, D.O.
Ms. Patricia H. Schwartz
Mary and John Sedlander
Sandro Segalini
Leonard and Sylvia Segel
Suzanne M. Selig

Dr. and Mrs. J.N. Shanberge
Stuart E. Sheill
Howard and Aliza Shevrin
Thomas and Jean Shope
Dr. Douglas and Barbara Siders
James Sidor, C.P.A.
Bruce M. Siegan
Ms. Ruth Siegel
Kenneth and Margaret Buttenheim Silk
Terry and Dorit Silver
Gene and Alida Silverman
Stephen Skelley
Allan and Alene Smith
George and Mary Elizabeth Smith
Dr. and Mrs. M. W. Smith
Cynthia J. Sorensen
Mrs. Jay Spaulding
Mr. and Mrs. H.W. Spendlove
Mrs. Alfred F. Staeb
Ed Stein and Pat McCune
Eric and Virginia E. Stein
Joanne Stein
Dr. and Mrs. Alan Steiss
Diane Stevens
James L. Stoddard
Ellen M. Strand and Dennis C. Regan
Mrs. William H. Stubbins
DeVere and Zita Sturm
Alfred S. and Selma Sussman
Brian and Lee Talbot
Frank and Carolyn Tarzia
Eva and Sam Taylor
Edgar and Mary Lou Thibodeau
Catherine and Norman Thoburn
Edwin J. Thomas
Joseph Thompson
J. Mills Thornton III
Dr. and Mrs. Robert F. Todd
Dr. and Mrs. Merlin C. Townley
Sarah Trinkaus
Penny and John Tropman
Irene Truesdell
Dr. and Mrs. Vincent J. Turcotte
Janet L. Turner
Andrew T. Turrisi III
Mr. George Unterburger
Rebecca W. Van Dyke
Barbara and Henry Vanderploeg
Edie and Paul Vegoda
Mrs. Durwell Vetter
Isabel M. Vitale
Mr. and Mrs. Theodore R. Vogt
Joe and Eleanor Voldrich
Cindy and Christopher Wackerman
Richard Walinski
Gregory A. Walker
Eric and Sherry Warden
Dr. and Mrs. J. Wardner
Charles and Ruth Watts
Robin and Harvey Wax
Christine Webb
Ju Lin Wei
Mr. and Mrs. Stanfield Wells, Jr.
Dr. Steven Werns
P.,M.,J.,C., and A. Westen
Mrs. L.K. White
Clara G. Whiting

Carroll and Dorothy Williams
Father Francis E. Williams
Dr. and Mrs. Francis S. Williams
John Troy Williams
Ms. Diane Willis
Mrs. Elizabeth Wilson
Mr. and Mrs. E. Winter
Professor and Mrs. Charles Witke
Charlotte Wolfe
Israel and Fay Woronoff
Miss Linda L. Wotring
David M.H. Wu
Mary Grace and Tom York
Christine Young and Alex Halliday
Martin and Gertrude Zeile
Gail and David Zuk

DONOR

Richard and Marie Abbott
Judge and Mrs. William F. Ager
Michihiko and Hiroko Akiyama
Ms. Karen Svendsen Al-Saadi
Mrs. John Alexander
Mr. and Mrs. Harold F. Allen
James and Catherine Allen
Pamela Amidon
Mr. and Mrs. Charles T. Anderson
Mr. Edwin Anderson
James and Kathleen Andonian
Dr. Lyle and Shirley Andress
Ms. Lynn Anslow
Ms. Carolyne Anthony
Tammy K. Antonucci
Donna and Todd Anuskiewicz
Mary C. Arbour
Jill B. and Thomas J. Archambeau, M.D.
Thomas J. and Mary E. Armstrong
Mr. and Mrs. Lawrence E. Arnett
Eleanore M. Amison
Mr. and Mrs. Arthur J. Ashe
Mr. and Mrs. Dan E. Atkins III
Doris E. Attaway
Mr. David August
John and Rosemary Austgen
Michael Avsharian
Charlene and Eugene Axelrod
Jonathan and Marlene Ayers
Professor and Mrs. Reeve Bailey
Peter and Paulett Banks
Gary N. Barber
Ms. Karla Barber
Norman E. and Mary E. Bamett
Gary W. Baron
Marjorie and Loren Barnitt
John W. H. Bartholomew
Leslie Bassett
Harold F. Baut
Gilbert and Mary Ellen Bazil
Florence N. Beach
Billie and Bill Bell
Mrs. Walter Benenson
Alice Benson
Mr. and Mrs. Ib Bentzen-Bilkvist
Dr. Rosemary R. Berardi
Mr. Abraham Berman
Gene and Kay Berrodin
Ms. Margaret C. Bignall

Claire Billingham
William and Ilene Birge
Ronald and Nancy Bishop
Kathleen Crispell Blackmer
Art and Berry Blair
Marshall and Linda Blondy
Greta L. Bocciaardi
Dr. and Mrs. David Bohr
C. Richard and Patricia S. Boland
Lee Bollinger and Jean Magnano Bollinger
Mark D. Bomia
Robert and Shirley Boone
Dr. and Mrs. Morris Bornstein
David W. Bostian
John D. and M. Leora Bowden
Robert and Jan Bower
Mr. and Mrs. Bruce M. Bowman
Ken and Mary Bowman
Drs. Laurence and Grace Boxer
Dr. Robert R. Brewster
Mr. and Mrs. Dale E. Briggs
Dr. Paulette Bromberg
Razelle and George Brooks
William M. and Sandra Broucek
Mr. and Mrs. Olin L. Browder
Fred and Julia Buesser
Sarah M. Burns
Ruth Busch
Lucile C. Buta
Dan and Virginia Butler
Dr. and Mrs. Robert S. Butsch
Helen S. Butz
Susan and Oliver Cameron
Dr. Ruth Cantieny
Ms. Susan Cares
Philip C. Carpenter
Mr. Douglass L. Carson
Maggie Cavallaro
Jack Cederquist
Joanne C. Ceru
Mr. and Mrs. J.P. Chandler
Bill and Susan Chandler
Daniel and Linda Chapman
Cecelia Chemick
Mr. Chi Cheung
Dr. and Mrs. Alfred Ching
Soon and Kwang Cho
Mr. and Mrs. R. A. Choate
Mr. Jong-Wang Chow
Edward and Rebecca Chudacoff
Patty Clare
John and Carole Clark
Joseph F. Clayton
Earl Clemens
Irene Cleveland
Mr. and Mrs. R. N. Coe
Shirley A. Coe
Dorothy Burke Coffey
Jan and Carl Cohen
Hilary and Michael Cohen
Catherine M. Collins
Peter and Katherine Cooley
Dr. and Mrs. William W. Coon
David and Myrtle Cox
Mary Sue Cox
Ms. Shelley Winters Cranmer
Mary Crawford

Geoffrey L. Crosbie
 Ms. Julia K. Cucuro
 Sally A. Cushing
 Mr. and Mrs. David G. Cylkowski
 Marylee Dalton
 David C. Darr
 Robert M. Dascola
 Ed and Ellie Davidson
 Laning R. Davidson, M.D.
 Ruth and Bruce Davis
 Dr. and Mrs. Leonard E. Davis
 Roger E. Davis
 David and Kay Dawson
 Dean and Cindy Degalan
 Ms. Carol DeJong
 Raymond A. Detter
 Kenneth and Judith DeWoskin
 Norma Diamond
 Carolin and Macdonald Dick
 Dr. Michael DiPietro and Alice Fishman
 Heather and Stuart Dombey
 Father Timothy J. Dombrowski
 Ruth P. Dorr
 Mr. and Mrs. Harry Dreffs
 Ms. Jane Dutton
 Frances E. Dyer
 Mr. and Mrs. William G. Earle
 Dwight and Mary Ellen Eckler
 Ruth Eckstein
 Dr. and Mrs. Irwin Eisenfeld
 Mr. Barry Eisenstein
 David A. Eklund
 Sol and Judith Elkin
 Dr. and Mrs. Charles Ellis
 Ethel and Sheldon Ellis
 James H. Ellis and Jean A. Lawton
 Jack and Wilma Elzay
 Mr. and Mrs. H. Michael Endres
 Mr. Paul Epstein
 Mr. and Mrs. Glen Erickson
 Mr. and Mrs. Ronald Erlich
 Adeline S. Everhardus
 Ms. Joyce Ewing
 Mary K. Fancher
 Pierce H. Farrar
 Mr. and Mrs. John Feikens
 Barbara L. Ferguson
 Mr. Dennis Fernly
 Kathryn Ferriell
 Mr. and Mrs. Melvin Fiegel
 Carol and Aaron Finerman
 Clarisse Finkbeiner
 Mr. and Mrs. Charles R. Fisher
 Mr. and Mrs. M. Scott Fisher
 Mrs. Selma Fisher
 Susan R. Fisher and John W. Waidley
 Winifred Fisher
 Linda and Thomas Fitzgerald
 Mr. James H. Flinn, Jr.
 Peter and Carol Flintoft
 George and Kathryn Foltz
 Ms. Andrea Foote
 Ms. Kay Ford
 Mrs. Violet M. Ford
 Mr. and Mrs. William C. Forgacs
 Mr. and Mrs. Leo Fox
 Mr. and Mrs. Larry Frank

Mr. and Mrs. Jarvis Franzblau
 Selma and Newton L. Freedman
 Julia M. Freer
 Richard and Joann Freethy
 Otto W. and Helga B. Freitag
 Vivian H. French
 Elizabeth and Keith Gadway
 Jane Galantowicz
 Marjorie and Arthur Gallagher
 Mr. and Mrs. George J. Gallas
 Mr. and Mrs. Bernard A. Galler
 Elisabeth Garay
 Mrs. Shirley H. Garland
 Ms. Marie Garlick
 Mr. and Mrs. Garnet R. Garrison
 Janet and Charles Garvin
 Ms. Myrtle Gasilo
 Drs. Steve Geiringer and Karen Bantel
 Nick and Sharon Genova
 Mr. and Mrs. Matthew J. Germane
 Mr. Mark Gersovitz
 W. Scott Gerstenberger and Elizabeth A. Sweet
 David and Helene Gidley
 Elida F. Giles
 Mrs. Sidney F. Giles
 John Gilstorf
 Dr. and Mrs. F.B. Glaser
 Dr. David W. Gnegy
 Mr. Albert L. Goldberg
 Ed and Mona Goldman
 Howard Goldman
 Anita and Al Goldstein
 Steve and Nancy Goldstein
 Audrey Goman
 Mr. and Mrs. Mitchell A. Goodkin
 Lana Gore
 William A. and Jean Gosling
 Naomi Gottlieb
 Sheryl T. and Todd W. Grant
 Dr. and Mrs. Serge Gratch
 Robert H. and Judith K. Gray
 Bertha M. Green
 Suzanne and Frank Grefsheim
 G. Robinson and Ann Gregory
 Mr. and Mrs. James J. Gribble
 David and June Griffenhagen
 Laurie Gross
 Lawrence and Esta Grossman
 Mary and Bob Grover
 Paul L. Gruchala
 Frederick and Iris Gruhl
 Cyril Grum and Cathy Strachan
 Doris and Harvey Guthrie
 Ms. Mary Haab
 Dorothy S. Haake
 Mr. Amiya K. Hajra
 Barbara J. Hall
 Marc and Leslie Halman
 Mr. and Mrs. Kirk Hamilton
 Frances Hamman
 Mrs. Frederick G. Hammitt
 Dora E. Hampel
 David and Patricia Hanna
 Mrs. Olive Hansen
 Mr. and Mrs. L. T. Harbeck
 Ken Harbour

Laurelynn and George Harris
 Mr. and Mrs. Robert Harris
 Ms. Dorothy J. Hart
 M. Jean Harter
 Mr. William G. Harter
 David and Pat Haskell
 Elizabeth C. Hassinen
 Carolyn M. Carty and Thomas H. Haug
 Mr. and Mrs. Robert F. Haugh
 Professor Jeffrey Heath
 Albert E. Heins
 Mr. and Mrs. Jeffrey J. Helmick
 Norma and Richard Hendersson
 Karl P. Henkel
 Ralph and Ada Herbert
 Jolene and Albert Hermalin
 Mr. and Mrs. Ramon R. Hernandez
 Ms. Mallory Hiatt
 David and Barbara Hill
 Peter Hinman and Elizabeth Young
 Drs. John E. Billi and Sheryl Hirsch
 Jane and Dick Hoerner
 Mr. Timothy Hofer
 Carol Hohnke
 Ken and Joyce Holmes
 Jeanette Holtman
 Eugene and Joan Homeister
 Penelope Hommel and Steven Pepe
 Mr. and Mrs. Harry H. Hopkins
 Bert G. Hornback
 Dr. Nancy Houk
 James S. House and Wendy Fisher House
 Kenneth Hulsing
 Ms. Jean Huneke
 Raymon and Sylvia Hunt
 Eileen and Saul Hymans
 Ilyas Iliya
 Ms. Juko Imai
 Mr. and Mrs. S. A. Imreedy
 Mrs. Jeane Van Deest Irwin
 Mr. Hiroshi Kan Itoh
 Mr. and Mrs. Jeff Jackson
 Mr. and Mrs. Roger E. Jacobi
 Richard Jaeger
 Ms. Jerri M. James
 Mr. and Mrs. Jerome Jelinek
 Mrs. Shwujiing Jeng
 James C. and Baiba G. Jensen
 Russell E. Jenter
 Mr. Kurt Jeppesen
 Herbert and Susan Johe
 Elizabeth Johnson
 James S. Johnson
 Mr. James Johnston
 Anne Hough Jones
 Elizabeth M. Jones
 Mr. and Mrs. Ernest A. Jones
 Ms. Susan Jordan
 Glenna M. Joyce
 Dominic M. Justewicz
 Ms. Mary B. Kahn
 Lois and Gordon Kane
 Naomi M. Kane
 Mr. and Mrs. Irving Kao
 Julian M. Kaplin
 Mr. and Mrs. Richard L. Kaplin
 Mr. and Mrs. Franklin H. Kasle

Ralph and Deborah Katz
 Samuel H. Katz
 Ms. Elizabeth Kaufman
 Dr. J. Kaufman
 Mr. Richard Keep
 Dr. and Mrs. Robert C. Kelsch
 Roberta Keniston
 Ms. Carol Kennedy
 Frank and Patricia Kennedy
 David J. and JoAnn Z. Keosaian
 Esther G. Kerr
 Mr. and Mrs. Donald Kiel
 Mr. Tim Killackey
 Jeanne M. Kin
 Mr and Mrs. William H. Kincaid
 Donald R. Kinder
 Ms. John R. Alexander and Ms. Carolyn King
 V. King
 Tom and Connie Kinnear
 Klair H. Kissel
 Steve T. Koeff, M.D.
 Seymour Koenigsberg
 Mr. Alan L. Knaus
 Glenn and Shirley Knudsvig
 Fumio Komatsu
 Sylvan and Elizabeth Humes Kornblum
 Mr. Chris Korow
 William and Michele Kotowicz
 Jean and Dick Kraft
 Ms. Sale Kuusik
 James and Karen Lahey
 Mrs. Jane F. Laird
 Alice and Henry Landau
 Dr. Stephen G. Landau
 Dr. Raymond Landes
 Mr. and Mrs. Charles Lane
 Myroslav Lapchak
 Joan and Charles Larson
 Richard and Neva Larson
 Carl F. and Ann L. LaRue
 Edward W. Lauer
 Ted and Wendy Lawrence
 David Lebenbom
 Ms. Kathy Lee
 Paul and Ruth Lehman
 Ms. Sue Leong
 Dr. David J. Lieberman
 Mr. John H. Lillie
 Dr. and Mrs. Frederick S. Lim
 Dr. and Mrs. Richard Lineback
 Nathan and Eleanor Lipson
 Mikhail Livshits
 Naomi E. Lohr
 Jane Lombard
 Mr. and Mrs. Richard S. Lord
 Mr. Jack Losee
 Lawrence and Susan Loucka
 Mr. Jack Losee
 Mr. and Mrs. Bruce Loughry
 Charles and Elsie Lovelace
 Paul and Donna Lowry
 Lynn Bennett Luckenbach
 John and Jane Lumm
 Fran Lyman
 John J. Lynch
 William and Judith Lynn

Dr. and Mrs. James C. MacBain
 Mary Egan MacDowell
 Susan E. Macias
 Mr. and Mrs. Alan B. Macnee
 Ruth MacRae
 Rev. and Mrs. Philip Rodgers Magee
 Gertrude Maglott
 Nancy Magnani and Kenneth C. Hass
 Ella A. Mahnken
 Dr. Karl Malcolm
 Mikhail Malkin
 Mr. and Mrs. D. H. Malloure
 Kathleen Beck and Frank Maly
 Ms. Patricia H. Mansfield
 Nancy and Philip Margolis
 Geraldine and Sheldon Markel
 Mrs. Ruth Sizer Marshall
 Ken Marushige
 Cmdr. and Mrs. Timothy H. Marvin
 Marion T. Marzolf
 H.L. Mason
 Larry and Rowena Matthews
 Mary and Chandler Matthews
 E. Mayer
 Josephine C. Mazzolini
 Ms. Marcia McBrien
 Margaret McCarthy
 Ernest and Adele McCarus
 David G. McConnell
 David and Claire McCubbrey
 Norman E. and Mary McIver
 Donald and Elizabeth McNair
 Mr. Edward A. Mehler
 Helen F. Meranda
 Rev. Harold L. Merchant, D.D.
 James and Kristy Meretta
 Alan G. and Sally Merten
 Dr. Henry D. Messer and Mr. Carl A. House
 Valerie D. Meyer
 Mr. and Mrs. Herbert M. Meyers
 Mr. Victor L. Meyers
 Dr. William P. Mies
 William M. and Joan E. Mikkelsen
 Dr. and Mrs. Josef M. Miller
 Prof. Murray and Yetta R. Miller
 Madolia E. Mills
 Ms. Eileen Moloney
 Van C. Momon, Jr. M.D.
 Ms. Mary K. Monteith
 Mr. and Mrs. Milton E. Moore
 Rosalie E. Moore
 Kittie Berger Morelock
 Robert Mrozinski
 Mrs. Erwin Muehlig
 Dr. and Mrs. Bernhard Muller
 Lora G. Myers
 Linda M. Nadeau
 Yoshiko Nagamatsu
 Louis and Julie Nagel
 Ruth Nagler
 Mr. M. P. Narayanan
 Carolyn E. Navarre
 Mrs. Elizabeth R. Neidhardt
 Mr. and Mrs. James K. Newton
 Richard and Susan Nisbett
 Ms. Laura Nitzberg

Bonnie and Andrew Nolan
 James A. Kelly and Mariam C. Noland
 Ms. Judith A. Nowack
 Mr. Frank Okoh
 Maury Okun
 Zibby and Robert Oneal
 Lillian G. Ostrand
 Mr. and Mrs. James R. Packard
 Viola Goin Palmer
 Mr. and Mrs. George Palty
 Janet Parkes
 Mr. Michael S. Parmacek
 Evans and Charlene Parrott
 Mr. and Mrs. William A. Paton, Jr.
 Sally S. Patten
 Richard C. Patterson
 Mr. William R. Paulson
 P. D. Pawelski
 Anita H. Payne
 Dr. and Mrs. M. Joseph Pearson
 Ms. Katie Pelz-Davis
 Solti Peng
 Susan A. Perry
 Mr. Ellsworth M. Peterson
 David and Marilyn Pettigrove
 Drs. Joseph and Sharon Petty
 Dr. and Mrs. James F. Pikulski
 Mrs. Patricia Pitts
 Martin A. Podolsky
 Mr. Albert M. Pollmar
 Mr. and Mrs. Gerald Powrozek
 Mrs. Anthony Preketes
 Jacob M. Price
 John and Nancy Prince
 Julian and Evelyn Prince
 Mr. Bradley Pritts
 G. Robina Quale
 Marijean Quigley
 Marshall E. Quinn
 Steve and Ellen Ramsburgh
 Alfred and Jacqueline Raphelson
 Dr. and Mrs. Robert Rapp
 Ethel Rathbun
 David William Rau
 Keith and Beth Reed
 Anthony Reffells
 Walter A. Reichart
 Jim and Linda Reinhardt
 Stephen P. Reinhart
 Alice Rhodes
 Mary K. Riley
 Constance Rinehart
 Bill Roberts
 Doug and Kathy Roberts
 Dave and Joan Robinson
 Jay and Machree Robinson
 Jonathan Rodgers
 Tom and Junko Roehl
 Richard and Susan Rogel
 Dr. and Mrs. Leslie W. Rogers
 Minnie and M. Minette Rollins
 John H. Romani
 Harry A. Rommel
 Ms. Jane A. Ronca-Washburn
 Bob and Jean Rorke
 Milton and Marlene Rosenbaum
 William and Elinor Rosenberg

Dr. and Mrs. David W. Roush
Christopher Rothko
Mr. and Mrs. Roger Rudd
Mabel E. Rugen
Mr. and Mrs. Edward Rupke
John Paul Rutherford
James and Ellen Saalberg
Mr. Chris Sackellares
Mr. Kiyonori Sakakibara
Dr. Don and Marlene Salberg
Sandra and Doyle Samons
Mirian and Fred Samson
Marjorie and William Sandy
Ms. Elizabeth M. Savage
Dr. and Mrs. George Sayre
Mr. and Mrs. Alan Schall
Mr. Kurt Schmidt
Lara Schmidt
Mr. Michael Schrock
Sue Schroeder
Mary L. Schuette
Albert and Susan Schultz
Annette Schultz
Geraldine Seebach
Mr. Richard Seid
Handan Selamoglu
Gerda Seligson
Mr. and Mrs. Kirtikant Shah
Matthew D. Shapiro and Susan L. Garetz
David and Elvera Shappirio
Robert S. Sher
Joan L. Shillis
Ms. Laurie C. Shulman
Ray and Marilyn Shuster
Milton and Gloria Siegel
Paul and Pamela Sieving
Sandy and Dick Simon
Frances and Scott Simonds
Nora G. Singer
Donald and Susan Sinta
Mrs. Beverly N. Slater
Thomas and Cora Slavens
Mr. and Mrs. David Boyd Smith
Donald C. and Jean M. Smith
Floyd and Fay Smith
Dr. and Mrs. Gregory Smith
Mr. and Mrs. Paul L. Smith
Virginia B. Smith
Richard and Jo-Ann Socha
Mr. and Mrs. Alan Solvay
Dr. and Mrs. Rodolfo Son
Mina Diver Sonda
Mr. Garnet B. Sparks
Dr. and Mrs. Robert Speer
Ms. Barbara Spencer
Jeff Spindler
Ward H. Squires
Mary Stadel
Mr. and Mrs. Gus Stager
Mr. and Mrs. Ralph Stahman
David and Ann Staiger
Ms. Constance Stankrauff
Charles and Julie Steedman
Dr. Michael and Helene Steinberg
Mr. J. Robert Sterling
William and Georgine Steude
Harold M. and Nancy G. Stevenson

M. Virginia Stevenson
Ms. Lynette Stindt and Mr. Craig S. Ross
Sue Stindt
Sally Stoehr
Dennis and Barbara Stoffer
Mr. and Mrs. Willis Stoick
Mr. and Mrs. James Stokoe
Aileen and Clinton E. Stroebel
Joe Stroud and Kathleen Fojtik
Drs. Eugene Su and Christin Carter-Su
Mr. and Mrs. Patrick Suchy
Mr. and Mrs. Robert H. Super
Joan C. Susskind
Earl and Phyllis Swain
Waldo and Betty Sweet
John and Carol Swienckowski
Peg Talburtt and Jim Peggs
Dr. and Mrs. William B. Taylor
Toby J. and Juliette S. Teorey
Vern and Bonnie Terpstra
Bev Teuscher
Carol and Jim Thiry
Catherine and Norman Thoburn
Charles and Peggy Tieman
Mr. and Mrs. Franz Topol
Mrs. Richard E. Townsend
James Toy
Irving and Barbara Tukul
Lisa and Jeffrey Tulin-Silver
James Turner
Jan and Nub Turner
William H. and Gerilyn K. Turner
Marilyn Twining
Mr. Koichi Uchida
Michael Udow
Barbara and Joseph L. Ullman
Ms. Elaine Umholtz
Paul and Fredda Unangst
Joyce A. Urba and David J. Kinsella
Brian A. and Susan R. Urquhart
Emmanuel-George Vakalo
Mr. and Mrs. Paul Valenstein
Jan Valentine
The Van Appledoms
Robert P. and Barbara Van Ess
Mr. Reynold Van-Til
Linda Vanek
Barbara and James Varani
Mr. Gary W. Vartanian
William C. Vassell
Joseph and Alice Vining
Terre Voegeli
Carolyn and Jerry S. Voight
Norman C. Wait
Mr. and Mrs. David C. Walker
Robert D. and Liina M. Wallin
Patricia Walsh
Ann E. Walton
Joseph C. Walters
Ann E. Walton
Ms. Graceann Warn
Kristine and Donald Warren
Margaret Warrick
Alice and Marty Warshaw
Dr. and Mrs. Alan Weamer
Christine L. Webb
Edward C. Weber

Joan M. Weber
Mrs. Joan D. Weber
Kathleen and William Weber
Deborah Webster
Mr. and Mrs. Gerald Weisman
Dr. Bernard Weiss
Mary E. Welch
Thelma L. Wells
Mr. and Mrs. Byron L. West
Scott and Marcie Westerman
Michael N. Whitcombe
James Boyd and Mary F. White
Nicholas and Patricia White
William W. White
Rebecca S. Whitehouse
Mr. and Mrs. Nathaniel Whiteside
Mr. and Mrs. Alexander Wiener, Jr.
Mr. and Mrs. Peter H. Wilcox
Mr. and Mrs. Michael S. Wilhelm
Raymond C. Williams
Mr. Dean Willmer
Dr. Magnus Wilson
Stephen B. and Danette Wineberg
Donna Winkelman and Thomas Easthope
Mr. Jim Winter
Dr. and Mrs. Lawrence D. Wise
David and Lia Wiss
Kristine and Donald Warren
Leonard and Sharon Woodcock
Barbara H. Wooding
Ms. Susan Wooding
Mr. and Mrs. David Wright
Ernst Wuckert
Mrs. Antonette Zadrozny
Ms. Mary J. Zako
Robert and Charlene R. Zand
Mr. and Mrs. F. L. Zeisler
Dr. and Mrs. George Zissis

SUSTAINING MEMBER

Akira Abe
Mr. and Mrs. Jerroll Adams
Jo Ann Aebersold
Ms. Mary Agnello
Rev. and Mrs. Charles Akre
Dr. Roger Albin
Miss Sarah K. Albright
Ms. Lois Lynne Alexander
Mark and Suzan Alexander
Ms. Kelly Allen
Mrs. Barbara Anderson
James David Anderson
Ms. Judith L. Anderson
David Andrea
Ms. Ann Andrew
Vivienne N. Armentrout
Mrs. Barbara Armstrong
Dr. and Mrs. Wallace A. Arneson, Jr.
Rudolf and Mary Amheim
Dr. and Mrs. Peter Ash
Leslie and Michael Atzmon
Ronald E. and Anna Marie Austin
Kathy Babcock
Henry and Grace Bachofer
Wayne and Rachel Baer
Mr. and Mrs. J. Albert Bailey
Ms. Maureen A. Balke

Dr. and Mrs. Fleming Barbour
Mr. and Mrs. David Barera
Maria K. Barna
Ms. Toni Lee Owen Barstis
Joan W. Barth
Alan R. Bass
Mr. and Mrs. Percy Bates
Mrs. Gerhard Bauer
Ms. Patricia Lynn Bauer
Mr. Tom Hay Bauer
Margarete Baum
Ms. Evelyn R. Beals
Ms. Carol A. Beardmore
Jim Beck and Katie Home
Mary T. Beckerman
Tamar and Harel Beit-On
David and Mary Anne Beltzman
Mr. John W. Bennett Jr.
Dr. Rosemary R. Berardi
Ruth Berean
Eric Berg
Dr. and Mrs. Eli V. Berger
Ms. Sara Berkovitch
Mr. and Mrs. Lawrence S. Berlin
Andrew H. Berry, D.O.
Robert Hunt Berry
Ralph and Mary Beuhler
Irene Biber
Eric and Doris Billes
Sherry Hirsch and John E. Billi
Ms. Anne Birchfield
Dr. Stacy G. Birmingham
Mr. Bruce P. Block
Mr. Heinrich Bloemeke
Mr. Joseph Blotner
Mr. and Mrs. Francis X. Blouin, Jr.
Mr. and Mrs. Alexander Blumenberg
Martha M. Bohn
Mrs. Wallace J. Bonk
Thomas R. Boothby
Lola J. Borchardt
Dr. and Mrs. Ralph Bozell
Mr. Stephen Brabbs
Mr. Bruce Bradley
Kathryn Linder Bradley
Paul and Anna Bradley
Mr. Duane and Mrs. Barbara Branch
Debra and Gregory Brandell
Richard B. Brandt
Anne Meyendorff and Hugo Braun
Mr. Joel Bregman and Ms. Elaine Pomeranz
Ruth M. Brend
Virginia A. Bridge
Jim and Elizabeth Brien
Mr. and Mrs. Steven Brouwer
Mr. Charles C. Brown
Kay Brown
Martha L. Brown
Robert W. Brown
Mrs. Ruth A. Brown
Mr. and Mrs. Edward W. Browning
Mr. and Mrs. Donald K. Brundage
Donald R. and Ann D. Brundage
Robert and Carolyn Burack
Ms. Ann Burke
Mr. Joseph Burke

Mr. and Mrs. William Burmeister
William and Rosalie Burns
Senator and Mrs. Gilbert E. Bursley
Ms. Jody Burton
Michele Bushaw
Mrs. (Betty) Thomas Bust
Thomas E. Butts
Mary C. Caggegi
John and Pat Calhoun
Mr. John T. Campbell
Ross and Bev Campbell
Dr. and Mrs. Brent Carey
Mr. Leo E. Carey
Daniel and Mary Carlson
Marc and Janet Carlson
Carolyn Longacre and Michael Wilens
Sally Carpenter
Mr. and Mrs. Ezra Cassel
Robert A. Castillo
Linda F. Chaikin
Mr. Hei-Ping Chang
Mr. and Mrs. Kee Man Chang
Ann Chapman
Evelyn M. Chase
Ms. Lori Cheek
Doris Chelune
Ms. Hisae Chen
Mignonette and Richard Cheng
Beverly and Morton Chethik
Ms. Janine Chey
Ms. Dianne J. Christopherson
Mr. Donald L. Christopherson
Mr. T. Michael Church
Charles and Beth Clark
Dr. and Mrs. Charles Clayman
Ms. Julie Clifford
Ms. Elizabeth Cobbs
Hubert and Ellen Cohen
Ms. Joan Colladay
Michael Collins
Mr. Joseph Conlon
Maria Constant
Ms. Maria L. Constant
Ms. Cassandra X. Constantino
Cindy Cooke
Jeff Cooper and Peggy Daub
Ms. Nancy O. Cooper
Richard and Betty Jane Cooper
Mr. Karol J. Corson
Marjorie and Jack Craven
Dr. and Mrs. Orlo L. Crissey
Lora Crombez
Ms. Carolyn R. Culotta
Mr. and Mrs. Robert L. Culver
Richard J. Cunningham
Ms. Marcia Dalbey
Dr. Jamie Dananberg
Mr. and Mrs. Lee Danielson
Judi and Ed Davidson
Mr. Dale De Vene
Mr. and Mrs. John S. Delos
Miss Judith Demick
Ms. Cindy Dempsey
Mr. and Mrs. William Dergis
Don and Pam Devine
Dr. Jack Distler
Mr. and Mrs. Mark R. Dixon

Ms. Nesrin Dogan
Mr. Michael Dolan
Ms. Sharon Dolega
Thomas and Patricia Dooley
Ms. Margaret Douglass
Ms. Karen E. Downing
Mr. Leonard Drake
Ms. Gretchen D. Driskell
Joanne Drow
Ms. Grace Drown
Bruce Duffy
Mr. and Mrs. Harold Dunn
G. Jean Dykhouse
Herbert and Hildegard Ebell
Mr. and Mrs. Ralph E. Edwards
Mr. and Mrs. William H. Ehlhardt
Mr. and Mrs. Harry Elkins
Beulah Elving
Mr. and Mrs. Neal H. Elyakin
Ms. Suzy M. Engleberg
Ms. Anne Epstein
Ellen Wagner and Richard Epstein
Ms. Judy Erickson
Ms. Laurie Erickson
Lawrence J. Emst
The Rev. and Mrs. Douglas Evett
Mr. Aren Fairchild
Barbara and Garry C. Faja
Mrs. George and Susan Fee
Alyssa Fein
Sheila Feld
Dorothy G. Feldman
John and Karen Ferguson
Yi-tsi Feuerwerker
Sharon Fike
Mrs. John V. A. Fine
Ms. Clare M. Fingerle
Mr. and Mrs. Leland Finkbeiner
Mr. and Mrs. James Finn
Ms. Laurel Firant
Linda J. Firmhaber
Lydia Fischer
Eileen Callam Fisher
Ira Fisher and Beth Eisler
Ms. Cheryll Forgue
Mr. Dan Foster
Mr. Michael Fotiadis
Joan and Tom Fournier
Mr. Ronald Fracker
Ms. Judith Francis
Tom S. Frank
Ms. Suzanne Frederick
Paul and Judy Freedman
Jonathan and Lynn Friendly
Eleanor J. Froehlich
Hamao Fujiwara
Mr. Louis Fulgoni
Mr. and Mrs. John B. Fyfe, Jr.
Lois W. Gage
Janet and Al Gallup
Mr. and Mrs. Robert R. Gamble
Ms. Mary P. Garske-Bilyeu
Mr. Clifton Gault
Hilma and Larry Geffen
Mr. Michael J. Geha
Ruth B. Gerler
Leonore Gerstein

Ms. Ruth Gewanter
 Janet Giebel-Hoover
 Mr. David M. Gilbertson
 Dr. and Mrs. Gary Gillespie
 Ms. Lydia Gilmour
 John and Marcia Gilroy
 Beverly Jeanne Giltrow
 Ms. Zaida Giraldo
 Mr. Jack Goldberg
 Edie N. Goldenberg
 David and Beryl Goldsweig
 Dr. and Mrs. Luis A. Gonzalez
 Mary M. Gooch
 Mr. John Gorman
 Michael L. Gowing
 Mr. and Mrs. Gordon J. Graham
 Miss Pearl Graves
 Mr. Tim Grech
 Lewis R. and Mary A. Green
 Dr. Robert and Mrs. Eileen Greenberger
 Margaret and Atee Grillot
 Dr. and Mrs. Alexander Grinstein
 Henry M. Grix
 Dr. and Mrs. Milton Gross
 Mr. and Mrs. Harvey Grotrian
 Cathy Grovenburg
 Mrs. Elizabeth S. Groves
 Leora Grunhaus
 Mr. Paul Gustafson
 Jerfaas A. and Maria A. Haas
 Stella and Karl Hackbarth
 Roger F. and Caroline Hackett
 Mr. and Mrs. Raymond R. Haggerty
 Mr. and Mrs. John Hall
 Mr. Matthew Hall
 Tamara Halle
 Mr. Douglas Halliday
 Chaplain and Mrs. Louis Halsey
 Dr. and Mrs. James C. Hamilton
 Marjorie H. Hammes
 Mrs. Oliver Hanninen
 Mr. and Mrs. George W. Harms
 Rena Harold
 Katherine and Terry Harris
 Tim and Nancy Harrison
 Kathleen A. Hart
 John and Anita Hartmus
 Marie D. Hartwig
 Paul and Annabelle Harvey
 Miss Margaret A. Harwick
 Kenneth Hass and Nancy Magnani
 Mr. Rex E. and Dr. Mary J. Hatt
 Mr. Richard G. Hawkins
 Mr. and Mrs. William Hawkins
 Mr. and Mrs. E. J. Hayes
 Mr. and Mrs. W. J. Heider
 Glenda Heinz/Dance Arts Academy
 James and Esther Heitler
 Mrs. William Heldreth
 William Helfer
 Paula B. Hencken
 Evva and Michael Hepner
 Dr. and Mrs. Clark Herrington
 Ms. Thayer Herrmann
 John and Merrill Herzenberg
 Mrs. Emily F. Hicks
 Robert and Cathy Hightower
 Dr. H. M. Hildebrandt
 Mr. Lawrence Hill
 Ms. Paula Hiller and Dr. Ned Kirsch
 Mavis Hines
 Mrs. Carolyn Hiss
 Mr. and Mrs. James Hoch
 Ms. Dalia Hoffman
 Mr. and Mrs. Alan Hoffmann
 Mr. and Mrs. James F. Hoffmeyer
 Mr. and Mrs. Timothy Hogan
 Suzanne Hogg
 Dr. Carol E. Holden
 Ms. Mary Martin Holliday
 Mr. and Mrs. Lee Hollmann
 Mr. Craig Holmes
 Gerry Holowicki
 Rose Marie Hooper
 Jack and Davetta Horner
 Eunice Hong
 Mr. and Mrs. Phillip Horwitz
 Helga Hover
 Kenneth and Carol Hovey
 Helen and Hubert Huebl
 Ms. Carol Hulbert
 Dana Hull
 Dolores Humes
 Roger and Audrey Hunt
 Ruth J. Husung
 Robert A. and Lisa Huth
 Mr. Alexander Izzo
 Mr. Luther P. Jackson III
 Mr. and Mrs. Edgar F. Jacobi, Jr.
 Nicolette Jakobowicz
 Mr. and Mrs. William Janke
 Lily Jamman-Rohde
 Ms. Susan C. Jarvis-Noetzel
 Marilyn and J. Dale Jeffs
 Mr. Jay Jernigan
 Mr. and Mrs. Peter T. Jessup
 Mr. Hun-Yong Jo
 Carolyn T. Johnson
 Mrs. Rita Johnson
 Mr. Marshall W. Jorgensen
 Ms. Barbara L. Joyce
 Professor Fritz Kaenzig
 Mr. Paul Kalas
 Mr. Robert D. Kallay
 Nancy S. Karp
 Mrs. Barbara R. Kasle
 Judith Katch
 Ms. Geraldine Kaylor
 Ruth Keirl
 Charles and Jean Kelsey
 Walter R. Kemnitz Sr.
 Ruth and Norman Kemp
 Mr. and Mrs. Robert Ketrow
 Mr. and Mrs. Robert N. Kienle
 Mrs. Grace F. Kikuchi
 Raymond Kilmanas
 William and JoAnn Kimbrough
 John S. King
 Mr. William Kinley
 Elvina A. Kish
 Peter and Susan Klaas
 Shira and Steven Klein
 William L. Knapp, M.D.
 Ms. Julie Knight
 Mrs. R. J. Knight
 Peter and Margaret Knoess
 Kay Delle Koch
 Laura E. Kodres and Daniel O'Brien
 Mr. Nicholas Kokkales
 Mr. Donald Kootsillas
 Alan and Sandra Kortesoja
 Lisa A. Kozak
 Ms. Brenda Krachenberg
 Mr. and Mrs. L. Seelbach Kraft
 Ms. Stephanie Krasnow
 Darlene Rae Krato
 Mr. and Mrs. Ted Krauss
 Edward and Lois Kraynak
 Ms. Janet Kreiling
 John Krol and Debra M. Kirby
 Ms. Beverly Krueger
 Margaret Labadie
 Susana Labastida
 Anne-Marie and Anthony La Rocca
 Janet Landsberg
 Mr. and Mrs. Maurice I. Laney
 Patricia M. Lang
 Mr. and Mrs. Thomas R. Larson
 Mr. David Lau
 Mrs. Kent W. Leach
 Dr. and Mrs. Daniel E. Leb
 Mrs. Elaine Lebenbom
 Ms. Patricia Lee
 Mr. and Mrs. Daniel Legault
 Paul H. and Genevieve Lemon
 Dorothy R. Lenghart
 Mr. Peter J. Lenk
 Ms. Marci Lesperance
 Dr. and Mrs. Morton B. Lesser
 Robert Leuthner
 Phyllis S. Levin
 Sheldon G. and Mary Lois Levy
 Ralph and Gloria Lewis
 John and Sylvia Lewis
 Ms. Annette Lilly
 Chyi-ing Lin
 Yi-Guang Lin and Sophia P. Lin
 Arthur and Karen Lindenberg
 Ms. Evelyn M. Lipphart
 Mr. James Lorenz
 Dr. and Mrs. Robert E. Lorey
 Merrill Lougheed Poliner and Robert M. Lougheed
 Ms. Pamela L. Lovell
 Jonathan and Beth Denenberg Lowe
 Dr. and Mrs. B. Lucchesi
 Mr. and Mrs. Daniel F. Lyons III
 Mr. and Mrs. H. F. Maasab
 Donald and Barbara MacCallum
 Mr. Robert MacGregor
 Ian and Jean MacPherson
 Mr. and Mrs. Gregg E. Magmuson
 Mr. Walter Mahoney
 Mr. Bruce W. Main
 Marsha Main
 Ronald Majewski and Mary Wolf
 Allen Malinoff
 Mr. Francis Manning
 Armena Marderosian and Ronald Suny
 Mr. Michael Marinetti
 Helen M. Marks

Bob and Alice Marks
Mr. and Mrs. Michael Marletta
Todd and Margeret Marsh
W. Harry Marsden
Ms. Jeanette M. Martel
Mr. and Mrs. Robert Martelli
Ms. Anna Martens
Yasuo and Motoko Maruta
Renate Klass and Matthew J. Mason
Mr. and Mrs. Bradley Massey
Donald J. Mathison
Mr. Joseph P. Mattimoe
Ms. Katherine N Maxey
Ms. Therease Maxwell
Mrs. Donald C. May
Ms. Kathryn M. May
Michael Maylen
Ms. Nancy W. McAllister
Mr. William C. McCaughrin
Kenneth and Martha McClatchey
Mr. Michael McClelland
Mr. and Mrs. Robert McCollum
Ms. Mary J. McCully
Doris King McCurdy
Pat and Stewart McFadden
John and Bridit McGillcuddy
Stephen McKenny
Mr. and Mrs. Ed G. McKinley
Ms. Joan McMullan
Alice McRae
Ms. Mei-Ling Lin
Ms. Marion Meilaender
Norman Meluch and Laura Fisher
Ms. Martha Mesa
Anna Meyendorff and Hugo Braun
Henry and Suzanne Meyer
James R. and Gloria S. Meyer
Mr. A. Rees Midgley
Saunders and Shirley Midyette
Mr. and Mrs. A.S. Mignery, Jr.
Jerry and Emily Miller
Mr. and Mrs. Charles R. Mitchell
William G. Moller, Jr.
Ruth M. Monahan
Rafael Montalvolugo
Patricia A. Montgomery
Mrs. Claudia Moore
Ms. Pauline T. Moore
Mrs. Rosemarie Morgan
Mr. Jeff Morton
Janet Muhleman,
Thomas P. Murtha
Elizabeth B. Mustard
Carroll and Sandra Nadig
Geneva Nelson
Mrs. Kathleen Nesbitt
Mr. Alex Neshkes
Sharon and Chuck Newman
Chris Nordhoff
Cheryl Norey
Penelope and Theodore Norris
Ms. Marcy North
Mr. John O'Brien
Ms. Patricia O'Connor
Jon and Diana Oatley
Ms. Mary Jane Olsen
Paul L. and Shirley M. Olson

Ms. Arline Olvitt
Martin and Lucy Overhiser
Anneke de Bruyn Overseth
Mrs. Charlotte Owen
Mr. David H. Owens
Mr. Dotun Oyedijo
Marianne E. Page
Dr. and Mrs. Robert Paine III
John Palmer
Gerard Pape
Mark and Susan Paris
Patricia Paris
Mr. and Mrs. James W. Parker
Dr. Mary Parks
Mr. and Mrs. Timothy Parrott
Virginia B. Passon
Ms. Susan Patterson
Dimitris and Vassiliki Pavlidis
Douglas and Mariel Peck
Mr. Jack Pelton
Nancy and Bradford Perkins
Ms. Harriet A. Perry
Ms. Sandra Perry
Doris I. Persyn
Mrs. George Peruski
Patsy C. Peterson
Carol Phillips
Honorable Harry E. and Jeanne M.
PICKERING
Ms. Jeanne M. Pietig
Mr. Joseph A. Placek
Joan Pollard
Ms. Mary Catherine Pollock
Richard E. Popov
Ruth S. Putnam
Mr. and Mrs. S. Rabinovitz
Norman and Norma Radin
Dr. Dwarakanath G. Rao
Mr. Kenneth Rapp
William and Mary H. Rave
Dr. and Mrs. Mark Rayport
Maxwell and Marjorie Reade
Gerald and Carol Rees
Adrienne Reisner
Rachel Resnick
Ms. Maria Restuccia
Ms. Ruth Reynolds
Todd Rhodes
Ms. Janis Richards
Dr. Rebecca Ricoy
Mr. F.L. Riddings
Ms. Judy Ripple
Ms. Grace Rising
Mrs. Lita Ristine
Renee A.C. Robbins
Mr. Bill Roberts
Marge and Don Robinson
Byron and Alice Roe
Janis M. Roese
Terrie Rogers
Drs. Dietrich and MaryAnn Roloff
Bernard and Barbara Rosen
Mr. David Rosenbaum
Edie W. and Richard Z. Rosenfeld
Lawrence and Abby Rosenthal
Ms. Joan Roth
Elizabeth Rother

Mr. Christopher H. Rothko
Robert M. Rubin
Michael and Margie Rudd
James and Adrienne Rudolph
Mr. Peter N. Ruma
Mr. and Mrs. Robert J. Rups
Ms. Carolyn Russell
Ms. Joan Russell
Mr. and Mrs. Gary Rutledge
Jane Rutzky
Michael and Joy Ryan
Laura and Robert Sabol
Ms. Doris Salley
Julia E. Salo
Mr. and Mrs. John Salvette
Leonard and Mae Sander
Mr. Lewis J. Sappington
Frances Sawyer
Craig R. Saxton
Jochen and Helga Schacht
Bonnie R. Schafer
Mr. and Mrs. Raymond Schankin
Mr. Peter Schappach
Mr. and Mrs. Ray Schieb
Erich S. Schifter
Ms. Helena Schlorff
Ms. Catherine M. Schmidt
Ms. Margaret Schmidt
Ms. Gwen Ellyn Schneider
James and Alice Schneider
Mr. and Mrs. Anthony Schork
Yizhak Schotten and Katherine Collier
Schotten
Shirley Schreidell
Janice Schuette
Mr. and Mrs. Donald Schulz
Aileen and Earl Schulze
Art and Mary Schuman
Mrs. Ralph E. Schweitzer
Ms. Mary Ann Scott
Ms. Shirley Seals
Hugh Sebastian
Ms. Eithel Partlow Sech
Ms. Bridgit Seeger
Dr. and Mrs. John Segall
Mary Ann Sellers
Mr. Donald D. Sepanski
Mr. John Sepp
Ms. Suzanne Roth Settle
Brahm and Lorraine Shapiro
Kathleen A. Sheehy
Ms. Dorothy Sherba
Mr. and Mrs. John Shilcuskyy
Mr. and Mrs. Thomas Shuler
Mr. and Mrs. Lawrence Siden
Mr. and Mrs. Robert Silva
Ron and Sheila Silver
Mr. and Mrs. Robert Sims
Scott and Joan Singer
Ms. Teresa Singh
Donald and Sharyn Sivyer
William R. and Judy B. Sloan
Ms. Kathy K. Smiley
Mr. Gerald R. Smith
Kristin and Gerald Smith
Ms. Helen Y. Smith
Mr. and Mrs. J. E. Keith Smith

Michelle Smith
Ms. Barb Snyder
Mr. C. Robert Snyder
Mrs. Milton Snyder
John and Ellen Soave
Mr. and Mrs. Alan Solvay
Ms. Tamara Lynn Sorelli
Mr. Hani Soudah
Ms. Hazel Spangler
Martha E. Spencer
John and Karen Spittler
Mr. Tom Spollen
Mr. Jeff Squire
Irving Stahl
Ms. Meroe Stanley
Mary Decker Staples
William C. and Kathryn Stebbins
Erich and Dotty Steiner
Sarah and Fred Steingold
Mr. Robert S. Stephenson
Joan Stern
Mr. and Mrs. Michael Stevenson
Mr. and Mrs. Gilbert Stiefel
Dr. and Mrs. Robert Stoler
Mrs. Ruth B. Stone
Mr. and Mrs. Albert M. Straub
Aileen and Clinton E. Stroebel
Vera L. Strongman
Mr. Robert D. Strozier
Manfred Stryk
Laura A. Stuckey
Dr. and Mrs. Samuel Stulberg
Ms. Terri L. Stull
Charles and Barbara Sturm
Mr. and Mrs. John E. Swigart
Dr. and Mrs. Michael Szymanski
Suzanne Tainter and Ken Boyer
Karen I. Tank
Ms. Denise Taylor-Moon
Mr. Stephan Taylor and Ms. Elizabeth Stumbo
Thomas and Leslie Tentler
Mr. and Mrs. James B. Terrill
Ms. Georgia Theodore
Mr. and Mrs. Marcel Thirman
Dr. and Mrs. Gerd Till
George and Helen Timmons
Connie and John Toigo
Richard Topping and Shauna Tindall
Kathleen Treciak and Timothy Hill
Ms. Roni Tripodi
Mr. George Trumbull
Mr. and Mrs. Warren Turski
Mr. Lyle Uhlmann
Mr. Alejandro Uribe-Ahumada
Jeffrey and Rachele Urist
Chris and Deborah VandenBroek
Virginia O. Vass
Al and Dorothy Vegter
Ms. Connie Velin
Peter Ventzek
Ms. Patricia S. Verlee
Carl T. Vial
John and Eunice Wagner
Leigh and Robert Waldman
Mr. and Mrs. David C. Walker
Dr. Donna Wessel Walker

Ms. Ellen Marie Walker
Arlene and Alan Walt
Dr. Christina Wang
Marguerite E. Ward
Lorraine Nadelman and Sidney Warschausky
Christine Weatherford
Richard and Madelon Weber
Wendell and LaDonna Weber
Dr. and Mrs. Myron E. Wegman
Carol and Jack Weigel
Ms. Elaine Weingart
Peri Weingrad
Joanne Weintraub
Donna G. Weisman
Lisa and Steve Weiss
Ms. Judith Wenzel
Carol Westerman
Mildred M. Wheeler
Barbara Tate Whipple
Cindy White
Nancy C. and James J. White
Mr. and Mrs. Leonard A. Wilcox Jr.
Mrs. Carolyn Wilde
Ms. Joan Wilde
Carolyn Longacre and Michael Wilens
Lindsey Wilhite
Mr. and Mrs. Charles Wilkins
Helen M. Wilkinson
Edwyn-Williams
Mr. Mark Williams
Ray and Twyla Williams
Mr. and Mrs. L. R. Windecker
Robert Winfield
Inez Winslow
Dr. and Mrs. John R. Wiseman
Mr. Stephen Wolpert
J. Reimer Wolter, M.D.
Julia Woodbury
Mr. Allan D. Woodell
Stewart and Carolyn Work
George and Elsie Yellin
Ms. Sandra Yobbagy
Mr. Frank Youkstetter
Frances L. Young
Ms. Pamela Young
Brian Yurewicz
Paul and Yvonne Zenian
William Zolkowski
Julia M. Zielke

Business, Corporation & Foundation Support

BRAVO SOCIETY

Arts Midwest
Ford Audio
Ford Motor Company Fund
Great Lakes Bancorp
Manufacturers Bank of Detroit
Michigan Council for the Arts
Wamer Lambert/Parke Davis

CONCERT MASTER

Brauer Investment Company
Chelsea Milling Company
Comerica and Comerica Capital Management
Ford Motor Credit Company
Jacobson's
KMS Industries
Benard L. Maas Foundation
McKinley Associates, Inc.
O'Neal Construction
Philips Display Components Company
Regency Travel
Society Bank Michigan

LEADER

Aristoplay Ltd.
Association of Performing Arts Presenters
Creditanstalt-Bankverein
General Motors Corporation
The Irwin Group of Companies
Michigan National Bank
The Mosaic Foundation
Estate of Marie Schlesinger
NBD Ann Arbor
Spear & Associates, Inc.
The Edward Surovell Company
Washington Street Station

GUARANTOR

Ann Arbor Area Community Foundation
Bodman, Longley & Dahling
Chelsea Community Hospital
Dobson McOmber Insurance Agency, Inc.
Michigan Trenching Service
The Power Foundation
Riverview Lumber & Building Supply Co., Inc.
Shar Music Products
T & T Sports Management Inc.

SPONSOR

The Old German Restaurant
 The Eugene and Margaret Ormandy
 Foundation
 The Radom Fund
 Charles Reinhart Company
 SCP Enterprises, Inc.
 Vlastic & Company

BENEFACTOR

Clark Professional Pharmacy
 Econo-Pak / Quality Container
 Edwards Brothers, Inc.
 Garris, Garris, Garris & Garris, P.C.
 John E. Green Company
 Light Action Foundation
 Thomas S. Monaghan, Inc.
 Seva Restaurant and Market
 Washtenaw Urology Clinic, P.C.

PATRON

Catherine McAuley Health Center
 Culbertson Jacobs & Milling Architects
 Chelsea Flower Shop
 Johnson, Johnson and Roy, Inc.
 King's Keyboard House
 David Lindemer Associates, Inc.
 L & S Music
 Milliken Interiors, Inc.
 Rollform, Inc.
 SKR Classical
 University Microfilms International

DONOR

Ann Arbor Convention & Visitors Bureau
 Adistra Corporation
 Conlin Faber Travel
 Progressive Building Materials

SUSTAINING MEMBER

Louis G. Redstone Architects

GAIL RECTOR PORTRAIT FUND

Dr. and Mrs. Robert G. Aldrich
 Joan and David Anderson
 Harry and Betty Benford
 Richard S. Berger
 Mr. and Mrs. Carl A. Brauer, Jr.
 Mr. and Mrs. Allen P. Britton
 Mr. and Mrs. John Alden Clark
 Gage R. Cooper
 Margaret and Douglas Crary
 Sally A. Cushing
 Jack and Alice Dobson
 Barbara L. Ferguson
 Ken, Penny and Matt Fischer
 Mary Jane and Charles Fisher
 Mr. and Mrs. Robben Fleming
 Mr. and Mrs. Garnet R. Garrison
 Fred and Joyce Ginsberg
 Anita and Al Goldstein
 Michael L. Gowing
 Mr. and Mrs. Elmer F. Hamel
 Mrs. Robert Hamilton
 Harlan and Anne Hatcher
 Harold and Anne Haugh
 Debbie and Norman Herbert
 Mr. and Mrs. Howard S. Holmes

Ray and Jude Huetteman, Jr.
 Alice and Keki Irani
 Mr. and Mrs. Roger E. Jacobi
 Keith and Kay Jensen
 Herbert and Susan Johe
 Dr. and Mrs. Richard D. Judge
 David and Sally Kennedy
 Richard and Ann Kennedy
 King's Keyboard House
 Mr. and Mrs. Carl J. Lutkehaus, Jr.
 Mr. and Mrs. John M. McCollum
 Paul and Ruth McCracken
 Charlotte McGeoch
 Mr. and Mrs. Roger E. Maugh
 Mrs. Donald C. May
 Professor and Mrs. Gustav Meier
 Alan G. and Sally Merten
 Mrs. Eugene Ormandy
 Mr. and Mrs. William B. Palmer
 Mr. and Mrs. John D. Paul
 Elizabeth and Beverly Payne
 J. Raymond and Agnes I. Pearson
 Maxine and Wilbur K. Pierpont
 Eugene and Sadye Power
 Mr. and Mrs. Phillip H. Power
 Mary and Robert Pratt
 Michael and Helen Radock
 Tad Rae
 John and Dorothy Reed
 William and Mary Revelli
 Frances Greer Riley
 Mr. and Mrs. Stephen J. Rogers
 Mary R. Romig-de Young
 Professor Thomas J. and Ann Sneed
 Schriber
 Stephen Skelley
 Mr. and Mrs. John C. Stegeman
 Elizabeth L. Stranahan
 Dr. and Mr. E. Thurston Thieme
 Mary H. Thieme
 University of Michigan School of Music
 Mr. and Mrs. Marc R. von Wyss
 Jerry and Elise Weisbach
 Mr. and Mrs. Stanfield Wells, Jr.
 Dr. and Mrs. S.B. Winslow
 Phyllis B. Wright

MEMORIALS

Marion L. Beam
 John W. Bean
 Mrs. Hedy B. Berger
 Leonard Bernstein
 Roscoe and Lillian Bonisteel
 Hope H. Bloomer
 Dr. Gordon C. Brown
 Marion W. Brown
 Alice Kelsey Dunn
 Robert S. Feldman
 Carl Fischer
 Gerald J. Fischer
 Florence Fuller
 Letitia Gamer
 Dr. Paul Hogg
 George Hunsche
 Hazel Hill Hunt
 Donald Katz
 Jean Kennedy

George Michael Landes
 Alfred and Grace Lovell
 Alfred H. Lovell, Jr.
 Betty S. Lovell
 Doris L. Lueke
 Frederick C. Matthaei, Sr.
 Glenn McGeoch
 Vaden W. Miles
 Margaret Peterson
 Carl and Loretta Pollmar
 Sara Power
 Gwen and Emerson Powrie
 Dr. Joseph Preston
 George Quick
 Steffi Reiss
 Percy and Elisabeth Richardson
 Denis Rigan
 Ruth Rogne
 Bernard J. Rowan
 Dr. Richard G. Schneider
 Mrs. Ethel Sharklin
 Charles A. Sink
 Mrs. Arthur W. Smith
 Mrs. James H. Spencer
 (Comelia Miller Spencer)
 Robert Spicer
 Ralph L. Steffek
 Mark C. Stevens
 Mischa Titiev
 Mrs. Flora A. Tomion
 Dur Vetter
 Mrs. Elena Vlissiders
 Ione Wagner
 Peter Holderness Woods

MATCHING GIFT COMPANIES

ADP Network
 Allied Signal Foundation
 Allstate Insurance Company
 AT&T Foundation
 Bechtel Foundation
 Chrysler Corporation
 Consumers Power Foundation
 Detroit Edison Foundation
 Dow Chemical U.S.A.
 Eli Lilly and Company Foundation
 Federal Mogul Corporation
 Ford Fund
 Gannett Foundation
 General Electric Foundation
 General Motors Corporation
 Honeywell Foundation
 J.C. Penney Company, Inc.
 Johnson Controls Foundation
 Libbey Owens-Ford Company
 Maccabees Mutual Life Insurance Co.
 Manufacturers Hanover Foundation
 The Manufacturers Life Insurance Co.
 McGraw-Hill Foundation, Inc.
 Merrill, Lynch, Pierce, Fenner & Smith, Inc.
 Metropolitan Life Foundation
 Michigan Bell Telephone
 3-M Foundation
 Northern Telecom, Inc.
 Northwestern Mutual Life Insurance
 Paramount Communications Inc.

The Proctor & Gamble Fund
Rohm and Haas Company
Scientific Brake and Equipment
Society Bank
UNISYS Corporation
Warner Lambert Company

IN-KIND CONTRIBUTIONS

Acoustical Ceiling & Partition/Ralph Wickham
Alice Simsar Gallery
Peter Allen
American Airlines
Ann Arbor Ceiling & Partition/Ron Dunn
Catherine Arcure
Michael and Charles Avsharian
Johnny and Betty Barfield
Gail Davis Barnes
Richard Bartlet
Wills Battles
B/C Contractors, Inc./Wayne Bryant
J.C. Beal Construction Co./Fred Beal
Bill Beck
David Belmore
Benson House Bed and Breakfast
Dave Bianco
Charles Borgsdorf
Dean Paul C. Boylan
Carroll Bradley
Mike Brady
Carl Brauer Investment Co./Carl Brauer
Bricklayers & Allied Craftsman/Sam Palazzolo
Brinker Mechanical Insulation/Gene Brinker
James F. Brinker
Allen and Veronica Britton
David O. Brown
Earl Brown
Jim Brunker
Bryant Air Conditioning/Joe Sera
Builders Heating Supply/Doug Beerens
Brenda Briest Casher
Conrad Cannon
Carpenters Local #512/Edwin Nyhus
Celotex Corp./Gary M. Draisin
Certainteed Corporation/Mike Witt
Anne Charles, Canadian Consul General
Mike Cisman
Cheers!
Chelsea Community Hospital
Chelsea Flower Shop
Don and Betts Chisholm
Clinch-On Products/Tom Sernett
Scott Cogan
Phil Cole
F.G. Crampton
Shannon Culver
Curtin and Alf, Luthiers
Scott Dault
R. Day
Roger Day
Doug Defavero
Detroit Area Bulgarian Community
Detroit Armenian Women's Club
I. Domenech
Jim Doneth

Trudy Dophosoh
Dow Chemical U.S.A./Mike Appicelli
Mike Eadie
Rosalie and Martin Edwards
Greg Eggleston
Electrical Workers Local #252/John Briston
Paul Everett
John Field
Andy Fletcher
Fine Flowers
Fingerle Lumber Co./John Fingerle
Ken, Penny and Matt Fischer
Fontanessi & Kaan Co./Jim Marzolf
Herb For
Ford Division, Ford Motor Company
Judy and Richard Fry
Richard E. Fry/Richard E. Fry A.I.A.,Ltd.
Gandy Dancer
Gasser & Bush, Inc./Randy Stowers
Kerry Gauss
Phil Gerwick
Glidden Paint Co./David Smith
J. Grey
Bob Grimston
Margo Halsted
Gregg Hamm
Jim Hanson
Hardware Agents/Richard Suminski
Mark Harper
Paul Harrison
Rob Henning
Matthew Hoffmann
JoAnne Hulce
L. Hummel
Huron Valley Glass/Rich Sayles
Alice Davis Irani
Perry Irish
Ironstone Welding/Dan Parrotte
Stuart Isaac
Sue Jantschak
Jewish Community Center
Timothy Julet
Carol Kahn
Rex Kanitz
Russ Kanitz
Drs. Gloria and Bob Kerry
Chris King
Howard King
King's Keyboard House
Dennis Kittel
Charles Klein
David Kwan
Tom Lancaster
H.S. Landau, Inc./Henry Landau
Landis & GYR Powers, Inc./Keith A. Walker
Wilson Little
Gary Loy
Martha Cooke Residence Hall
Madison Electric Supply/Gary Matthews
John Martin
Jamie Mayband
Michael Merrell
Metzger's Black Forest Restaurant
Michigan Trenching Service/Bob Lyons

Doug Miller
Sandra L. Miller/Plumbing & Mech. Contractors
Robert Millheim
John Minud
Mister Rubbish/Rod Kitchen
A. Mitchell
MKK Technologies, Inc./Sadaharu Honda
Gary and Ann Moeller
Mark Mohr
Dean Morrow
MSI/Jack Moorhead
Netherlands-American University League
New York City Opera Company
Jon Nyhus
Joe O'Neal
Oxford Conference Center, Scott Terrill, Mgr.
Paholak Group/Charles Phibbs
Philip Paskan
William Payne
Plumbers & Pipefitters #190/Don House
Jeff Porter
Don Pruneall
Public Relations Society of Detroit
Regency Travel
Rob Reilly
Harry Richardson
Alyce Riemenschneider/Riemenschneider Design Assoc.
Robertson-Morrison, Inc./Frank Johnson
Ann and Tom Schriber
Schlage Lock Co. Riggs Miller
Ronald Seeley
Kermit Sharp
Aliza and Howard Shevrin
Siemens, I.T.E./Scott Pemberton
Jeff Simkiss
A.F. Smith & Son, Inc./Bill Koeppe
David Smith
Julius S. Smith
Kathy Smith
Dave Spicer
Lois and Jack Stegeman
Greg Stephans
Helmut and Candy Stern
T.J. Stillman
Tony Swartz
Pete Swope
Garold A. Taylor
The Trane Company/Jim Baker
Detlof von Berg, German Consul General
Chuck Visel
United Mill & Cabinet Co./Dennis Ruppert
University of Michigan Construction Rep./Jim Tripp
University of Michigan Armenian Studies Program
University Musical Society Advisory Group
Washington Street Station
Washtenaw Community College/Les Pierce
Jack Weidenbach
Shelly F. Williams
Wyandotte Electric Supply/Richard Beck