

PROGRAM

Friday, October 26

“An Homage to Nijinsky and Balanchine”

VASLAW

Music: Johann Sebastian Bach

Choreography, Costumes, Lighting: John Neumeier

Prelude and Fugue

Fabrice Lemire

Sarabande

Fabrice Lemire

and

Nadia Dumas and Marc Krause

Menuet

Fabrice Lemire

and

Céline Marq and Massimiliano Mariani

Gavotte

Fabrice Lemire

and

Françoise Maillard and Jacques Cardoze

Allemande

Alexandra Wells

Sarabande and Rondeau

Fabrice Lemire

and

Isabelle Horovitz and Thomas Klein

Gigue

Fabrice Lemire

Final

The Company

John Neumeier of the Hamburg Ballet created this work as a tribute to Nijinsky. The choreographer writes: “This ballet, which requires no costumes or set, leaves the dancer with only his own body. He cannot rely on a plot description. It means that one has to have an instinctive reaction to dance and movement, not an intellectual reaction. It is not a matter of thinking — it is a matter of feeling.”



Vaslav

L'APRÈS-MIDI D'UN FAUNE

Choreography: Vaslav Nijinsky

Music: Claude Debussy

Scenery: Léon Bakst

Lionel Tardieu and Nancy Raffa

Béatrice Garnier Aurélia Schaefer

Nadine Forment, Isabelle Roche, Lydia Tendon, Corinne Blondel

On May 29, 1912, during the fourth season of the Ballet Russes in Paris, Nijinsky danced *L'Après-Midi d'un Faune*, which he created to the music of Debussy who had been inspired by the famous poem of Mallarmé. The first performance created a true scandal, and certain people did not hesitate to denounce the "erotic bestiality" of the dancing. The sculptor Rodin replied to this: "The human body as a whole conveys what the mind wants it to express, it attains individuality by rendering with great force the feelings lending life to it, it has the beauty of the frescoes and sculptures of Antiquity."

In spite of the backlash, the work has been kept in the repertoire. In addition to the Nijinsky version, which is presented here with original sets and costumes by Léon Bakst, the ballet has known several other versions, including the one by Serge Lifar in 1935, and another by Jerome Robbins in 1953.

PAS DE DEUX DE TCHAIKOVSKY

Choreography: George Balanchine

Music: Piotr Ilyich Tchaikovsky

Reconstruction: Patricia Neary

Isabelle Bourgeais and Thomas Klein

The music for this duo is the original Pas de Deux from the third act of *Lac des Cygnes*, discovered by George Balanchine at the musical library of the Bolshoi Theater when Vladimir Bourmeister staged a new version of this work. Mr. Balanchine choreographed this Pas de Deux for Violette Verdy and Conrad Ludiow, and the first performance took place on March 29, 1960, at New York City Center. It is a work of bravery performed by the greatest of international dancers, one that allows them to display virtuosity and elegance.

INTERMISSION

LE CORSAIRE PAS DE DEUX

Choreography: Marius Petipa

Music: Ricardo Drigo

Costumes: Jorge Gallardo

Jean-Philippe Alonso and Valentina Spadoni

Inspired by Byron's poem "Le Corsaire," this ballet theme was very much in fashion during the Romantic period. Conrad, the pirate, kidnapped Medora to save her from the horrible pasha who wanted to lock her in his harem. Both escaped on a ship that inevitably sank during a storm, but the beauty and her corsaire were saved from the wreck.

Joseph Mazilier, with music by Adolphe Adam (composer of *Giselle*), produced his *Corsaire* in 1856 at the Opéra de Paris in the presence of an enthusiastic Empress Eugénie. Jules Perrot staged his own version in 1858 at the Bolshoi of Moscow. Finally, Marius Petipa arranged his own version at the Théâtre Marie de Saint-Petersbourg in 1868 and revised it in 1899. This Pas de Deux, part of that revision, is today still part of the standard repertoire.

LA SOMNAMBULE

Choreography: George Balanchine

Music: Vincenzo Bellini,

Scenery: George Boitard

Arr. Vittorio Rieti

Reconstruction: John Tarras

The Company

George Balanchine created this choreography for the Russian Ballet of Monte Carlo, which he had just revived. Under the title of *The Night Shadow*, it was premièred in New York on February 27, 1946. For that occasion, Vittorio Rieti orchestrated music borrowed from two of Bellini's operas: *La Sonnambule* and *I Puritani*.

The Ballet Théâtre Français de Nancy asked George Boitard, designer of many sets for the opera and theater, to reconstruct the scenery. At a ball in a mysterious castle, an enigmatic baron entertains his guests: a shepherdess, a harlequin, and an acrobat. A poet puts up with a coquette's assault, then falls under the spell of a diaphanous shape — the sleepwalker, the baron's wife . . .



L'après-midi d'un faune

PROGRAM

Saturday, October 27

“Contemporary Classics”

SYMPHONY IN D

Choreography: Jiri Kylian

Music: Franz Joseph Haydn

Scenic Design: Tom Schenk

Valentina Spadoni, Annick Petit, Nadia Dumas, Nadine Froment
Béatrice Garnier, Françoise Maillard, Célin Marq
Aurélia Schafer

Anthony Basile, Thomas Klein, Lionel Tardieu, Fabrice Lemire
Jean-Philippe Alonso, Jacques Cardoze, Marc Krause
Massimiliano Mariani

Jiri Kylian, born in Czechoslovakia, has now attained international fame as a creator. His company, the Nederlands Dans Theater, has its home in the Netherlands. *Symphony in D* was created in 1976 in The Hague on a score by Haydn. It is a modern piece humorously sprinkled with allusions to classical ballet.

SHOSTAKOVICH PAS DE DEUX

Choreography: Kenneth MacMillan

Music: Dmitri Shostakovich

Costumes: Jürgen Rose

Isabelle Horovitz and Stéphane Cauchy

Born in 1929, Kenneth MacMillan left the Royal Ballet, Covent Garden, in 1966 for three years to become director of the Berlin Opera. He was director of the Royal Ballet from 1970 to 1977 and is now the principal choreographer for the company. Lynn Seymour joined him in Germany in 1966 and was to remain one of his principal performers — it was she who inspired the central movement of MacMillan's *Shostakovich Concerto* ballet. The ballet was choreographed to the brilliant Concerto for Piano that Shostakovich wrote for his young son Maxim and the Moscow Youth Orchestra. The ballet was premièred in 1963 at the Royal Ballet.

FAITS ET GESTES

Choreography: Ulysses Dove

Music: Robert Ruggiéri

Costumes: Jorge Gallardo

Lighting: John B. Read

Première: Paris 1988

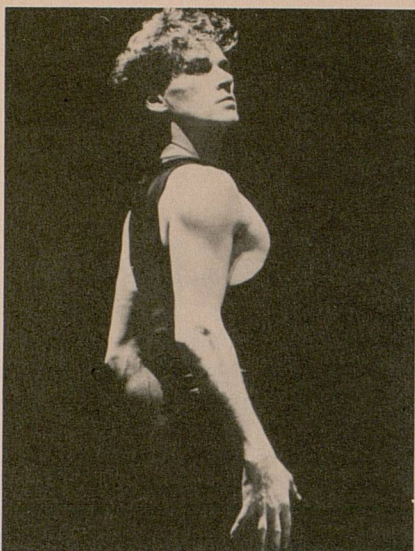
Alexandra Wells

Nancy Raffa

Isabelle Bourgeais

Françoise Baffioni

Thomas Klein and Lionel Tardieu or Stéphane Cauchy
Fabrice Lemire, Jean-Philippe Alonso, Anthony Basile



Faits et Gestes

Faits et Gestes (Deeds and Gestures) is an encapsulation of life. In less than a half hour, it aims at summarizing life's circumstances through their completion until all that has to be done is done. Nothing is missing, neither unity of time, nor place or space, in order to create with this piece some kind of classical tragedy — all of the soul's resources are expressed up to the final stamping that uses up the final energies.

Classicism is also the choreographer's concern for not saying more than what must be said and at the exact moment required. *Faits de Gestes* is a series of snapshots whose terseness underlines its intensity and violence. At the end, as stage lights fade, time stands still for a moment before returning to its rhythm, the rhythm of daily life that is slower, more dissipated.

INTERMISSION

VESPERS

Choreography, Scenery, and Costumes: Ulysses Dove

Music: "Quorum" by Mikel Rouse

Lighting: John B. Reed

Alexandra Wells

Nancy Raffa

Isabelle Bourgeois

Françoise Baffioni

Isabelle Horovitz

Nadia Dumas

In the Baptist communities of South Carolina, men and women gather for vespers on Wednesday at sunset, the prayer hour of the truly faithful. Ulysses Dove remembers the vespers of his childhood, his father, his grandmother, and their affectionate intimacy with the Holy Spirit, the only one of the Trinity who visits the faithful and comforts them. *Vespers* conveys the spirituality of meditation, ardor, exaltation, and enthusiasm of the older men and women known to Ulysses Dove in his childhood.

WHITE SILENCE

Choreography: Ulysses Dove

Music: The Art of Noise

Sets and Costumes: Jorge Gallardo

Lighting: Daniel Brochier

Fabrice Lemire and The Company

White points, black points, on the screen of a television, illuminated too late. What is this sound, this image that leaves nothing to imply its intensity? A "white" sound is that moment when the sound does not exist anymore, when all is nothingness, as when one falls asleep in front of a television and later in the night, wakes up in front of a "white" screen. For Ulysses Dove, not accepting this nothingness, whiteness, either sound or image, is full of multiple echoes, like a recital of images, colors, sounds that resound in our spirits, images of violence, happiness, short-lived yet strong lights that mark our unconscious and, no matter what, have their full existence.

Ballet Français de Nancy

Founded in 1978, the Ballet Français de Nancy has already risen to the upper echelons of dance. Under the leadership of Patrick Dupond, who was named artistic director in 1988, the company has experienced a technical and stylistic renaissance, one that has astounded critics and audiences alike. Dupond succeeded Jean-Albert Cartier, who has since become general director of the Festival International de la Ville de Paris, at the Palais Garnier. Earlier this year, Patrick Dupond was named successor to Rudolf Nureyev as artistic director of the Paris Opera Ballet, where he had been principal dancer since the age of 20.

Originally known as the Ballet Théâtre Français de Nancy, the company was established by the City of Nancy and the French Ministry of Culture and Communication, as part of a governmental policy to encourage the development of the arts outside Paris. The new company was to fill the void left by the Ballet Théâtre Contemporain, which had moved from Amiens to Angers. In 1987, the Board of Trustees voted to change the company's name to the Ballet Français de Nancy.

The Ballet's role is to promote dance not only throughout France, but also abroad. The company stages approximately 120 performances each year and has made numerous international tours under the aegis of the Association Française d'Action Artistique. Following their current six weeks of performances in the United States — beginning in the Midwest, continuing through Florida, then north along the East Coast — the company will embark on a tour of Japan.

The Ballet Français de Nancy is currently composed of thirty dancers, well trained in all aspects of their craft and from a predominantly classical background. The company presents twentieth-century repertoire, ranging from Diaghilev to contemporary choreographers. While it regularly performs the best-known pieces from dance history, this versatile troupe can also adapt to the aesthetic of contemporary works, such as *Pulchinelia* by Moses Pendleton, *Elemens* by Bertrand d'At, and *Faits et Gestes* by Ulysses Dove. The Ballet Français de Nancy follows the example set by Diaghilev in costume and scenic design, fostering a close relationship between painters and sculptors, on one hand, and musicians and dancers, on the other.

Company Soloists

Alexandra Wells, principal soloist, was born in Concord, Massachusetts. Her mother, also a soloist, first introduced Alexandra to dance. Ms. Wells continued her studies at the Joffrey Ballet, Harkness Ballet, and with Maggie Black. She performed classical and Balanchine repertoire with the Boston Ballet and later danced contemporary repertoire as soloist with Dennis Wayne's Dancers and other renowned companies. In 1981, the Ballet Français de Nancy invited her to perform *Aubade* with Rudy Bryans. Since then, Ms. Wells has been a principal soloist with the company and has performed with Rudolf Nureyev in *Miss Julie*, *Apollon Musagète*, *Le Spectre de la Rose* and *L'Après-Midi d'un Faune*.

Françoise Baffioni, principal soloist, was born in Cannes, France, in 1963. She studied at the Centre de Dance Rosella High-

tower in Cannes from 1974-1980 and then worked with the Jeunesses Musicales de France. In 1981, she joined the Ballet Français de Nancy. She was appointed soloist in 1986, and principal soloist in 1989. Ms. Baffioni has performed with Patrick Amand and Patrick Dupond.

Isabelle Bourgeois, principal soloist, studied ballet at the Académie de Monte Carlo with Madame Berbrasova until 1978, when she joined the Ballet Français de Nancy. She was appointed soloist in 1981, then principal soloist in 1984, and has performed with Rudolf Nureyev, Gilles Reichert, Rafaelle Paganini, and Patrick Dupond in *Apollon Musagète*, *Four Schumann Pieces*, *Othello*, *Vaslav*, *Tchaikovsky Pas de Deux Sonatine*, *Don Quichotte*, and Ulysses Dove's ballets.

Thomas Klein, principal soloist, was born in Stuttgart, Germany. His training as a dancer at the John Cranko Ballet Académie included ballet, jazz, modern dance, and tap dance. In 1986, he performed at the State Theater of Weisbaden, Germany, as soloist, and worked with choreographers Oscar Araiz and Louis Arietta in contemporary repertoire. In 1988, the Ballet Français de Nancy appointed him as soloist. Since then, Mr. Klein has performed *L'Après-Midi d'un Faune*, *Apollon Musagète* by Balanchine, *Othello* by John Butler, *Faits et Gestes*, *Bad Blood*, and *Vespers* by Ulysses Dove, *Strings* by Nils Christie, and *Petrouchka* by Michel Fokine. In 1990, he became a principal soloist.

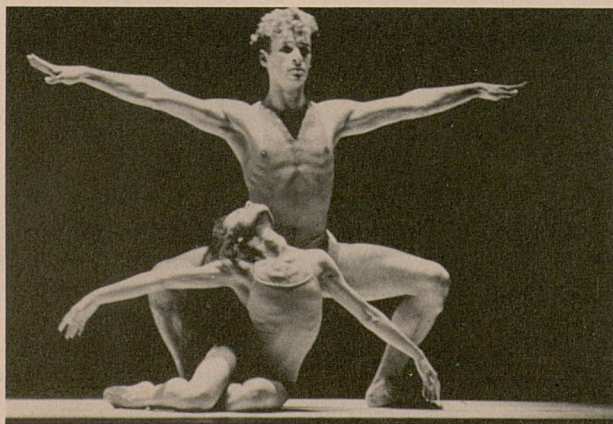
Nancy Raffa, principal soloist, a native of Brooklyn, New York, made her debut with the renowned teacher Gabriella Taub-Darvash. In 1980, at the age of 15, she was the first and the youngest American to win the Gold Medal *Prix de Lausanne Competition*. At the end of the same year, Natalia Makarova appointed her as soloist in her Broadway season at the Minskoff Theatre. When Ms. Raffa replaced the injured Makarova in the ballerina role Paquita, she received enthusiastic praise. In 1981, Ms. Raffa joined the American Ballet Theatre under the direction of Mikhail Baryshnikov. During her four years with that company, she performed the entire repertoire, as soloist, and as leading dancer. In 1985, she was invited by Ivan Nagy to perform leading roles in repertoire of the Ballet of Santiago. In 1987, Ms. Raffa joined the Ballet Français de Nancy as principal dancer.

Jean-Philippe Alonso, soloist, studied at the Conservatoire National and then performed with the Jeune Ballet de France. He joined the Ballet Français de Nancy in 1987 and became a soloist in 1989.

Fabrice Lemire, soloist, born in Paris in 1970, studied at L'Ecole de Danse de L'Opéra de Paris and at the Conservatoire National Supérieur de Musique de Paris. He then spent a year with the Jeune Ballet de France and subsequently joined the Ballet Français de Nancy in 1987. During his association with the Ballet Français de Nancy, Mr. Lemire has worked with Geneviève Kergrist and Lucienne Mairel.

Isabelle Horovitz, soloist, was born in Paris in 1961 and studied at L'Ecole de Danse de L'Opéra de Paris. In 1981, she joined the corps de ballet of the Ballet Royal de Wallonie in Belgium, under the direction of Jorge Lefebvre. She performed key roles with the company and, in 1983, was appointed principal soloist. In 1988, she became a soloist for the Ballet Français de Nancy under the direction of Patrick Dupond.

Anthony Basile, soloist, made his debut in New York with Gabriella Taub-Darvash. In 1983, he joined the Connecticut Ballet, where he performed as soloist and principal dancer. In 1984, Mr. Basile joined Ivan Nagy's Ballet of Santiago, where he performed the lead role in *Les Sylphides*, *Casse Noisette*, *La Sybride*, *Danza Japonaise*, *The Lady and the Fool*, *The Shrew*, and *Raymonda*.



White Silence

Diaghilev and the Ballets Russes

Diaghilev and his Ballets Russes — which Paris discovered in 1909 at the Théâtre du Châtelet — could be considered as not only causing a revolution in the art of dancing, but also setting an example for modern developments and offering a source of inspiration. The effects of this renewal are still to be felt now, thus the Ballet Français de Nancy pays homage to the impresario who found ways to discover and guide so many talented young people and turn them into masters of music, choreography, sculpture, and painting.

Sergei Diaghilev was born in the Novgorod district of Russia in 1872. He began studying law at St. Petersburg in 1890, but gravitated into journalism and art criticism. In 1907, he organized Paris concerts of Russian music as well as a production of Mussorgsky's *Boris Godunov*, which led to a whole season of Russian opera and ballet in Paris. Diaghilev scored a major triumph by engaging the dancer Nijinsky, the choreographer Fokine, and painters Bakst and Benois; the sensational Ballets Russes developed from that season and transformed the world of ballet.

Diaghilev directed the company until his death in 1929. Over the years, he called upon an astonishing range of talents: dancers — Nijinsky, Karsavina, Massine, Sokolova, Dolin; choreographers — Fokine, Nijinsky, Massine, Nijinskaya (Nijinsky's sister), Balanchine; designers — Bakst, Benois, Matisse, Picasso, Utrillo; and composers — Ravel, Stravinsky, Falla, Debussy, Prokofiev, Milhaud, Satie, Strauss, Poulenc, and Auric.

In addition to *L'après-midi d'un faune*, the Ballet Français de Nancy also carries these works from Diaghilev and the Ballets Russes in its repertoire: *Petrouchka* (Fokine), *La boutique fantasque* (Massine), and *Les Biches* (Nijinskaya).

George Balanchine

George Balanchine is indeed a milestone in the path of twentieth-century choreography. Each ballet that he staged was an occasion to invent new steps and new sequences; especially when he worked for the New York City Ballet, Balanchine's art attained a mastery that was to serve as a model for future generations.

The celebrated Russian-American choreographer was born in St. Petersburg in 1904. He attended the Imperial Theater School in St. Petersburg, where he received a thorough training in music and classical dance. In 1924, Balanchine left Russia for a tour through Germany and England and was then invited to join Diaghilev's Ballets Russes in Paris, where he created a number of works. In 1933, he went to New York and co-founded what would later be known as the New York City Ballet. This period — 1948 until his death in 1983 — dates his great and influential work for modern dance. In his long life as a choreographer, George Balanchine created nearly 200 ballets to music scores ranging from the Baroque to Broadway, and from opera to Hollywood films. In 1983, he received the Presidential Medal of Freedom and was named director emeritus of the New York City Ballet.

Contemporary Classics and Creations

A company's repertoire cannot be composed only of such works that are highlights of the past that are now milestones in the history of ballet. Several choreographers of immense talent are recognized as masters of the twentieth century. The Ballet Français de Nancy includes in its repertoire the works of Agnes de Mille, Birgit Cullberg, John Butler, Maurice Béjart and Hans Van Manen. Among the younger generation of choreographers in the repertoire are Moses Pendleton, Nils Christie, and Bertrand d'At.

Represented in this weekend's programs are John Neumeier of the Hamburg Ballet; Kenneth MacMillan of the Royal Ballet; Jiri Kylian, Czech-born creator; and three new works by Ulysses Dove, remembered in Ann Arbor from his work with the Alvin Ailey Dance Theater.

Creativity
is powered by strong ideas.
Lorraine
has the power to generate them.



At the cultural heart of Europe, Lorraine is a vast breeding ground for ideas. All of them powerful. All of them charged with creative force. From old-time color illustrations to synthesized images, contemporary architecture to sophisticated jazz, fine glassware to Metz 2000 computer software, the Lorraine Philharmonic

to advanced medicine, stringed instruments to research labs, Patrick Dupond's outstanding ballet company to the latest communication systems developed by Jean-Marie Rausch. Lorraine's inventiveness flourishes in every field. In keeping with a powerfully simple concept – creativity is life. **Lorraine. Catch a rising star.**

LORRAINE DEVELOPMENT OFFICE

Contact: B. Comet-Barthe • Healey Building • 57 Forsyth Street N.W. • Suite 1100 • Atlanta, (GA) 30303 • Phone: (404) 659 23 53



Thank You Encore!

Great music happens through the University Musical Society because of the much needed and greatly appreciated gifts of Encore Members.

The list below represents names of current donors through September 1, 1990. If an error or omission is noted, we sincerely apologize and would appreciate a call at your earliest convenience (747-1178).

Individuals

Bravo

Herbert Sloan

Concertmasters

Mr. and Mrs. Carl A. Brauer, Jr.
Mr. and Mrs. Howard Holmes
Elizabeth E. Kennedy
Mr. and Mrs. Patrick B. Long
John Psarouthakis
Dr. and Mrs. Harry A. Towsley
Ron and Eileen Weiser

Leaders

Dr. and Mrs. Robert G. Aldrich
Richard S. Berger and E.
Margaret Eich
Dr. and Mrs. James H. Botsford
Margaret and Douglas Cray
Mr. and Mrs. Thomas C. Evans
Ken, Penny and Matt Fischer
Marilyn and Dale Fosdick
Carl and Sue Gingles
Mr. and Mrs. Roger E. Maugh
Mr. and Mrs. John D. Paul
Mr. and Mrs. Gail W. Rector
Mr. and Mrs. John C. Stegeman
Edward D. Surovell

Guarantors

Jerry Albrecht
Judith Dow and Robert Alexander
Catherine S. Arcure

Mr. P.E. Bennett
Joan and Will Boddie
Mr. and Mrs. John Alden Clark
Jack and Alice Dobson
President and Mrs. James
Duderstadt
John and Esther Floyd
Mr. and Mrs. Edward P. Frohlich
Lourdes and Otto Gago
Charles and Rita Gelman
Edward O. and Margaret G. Gilbert
Mr. and Mrs. Britton L. Gordon
Mr. and Mrs. Robert C. Graham
Harold and Anne Haugh
Edward F. and Judith Heekin
Mr. and Mrs. Peter N. Heydon
Mr. and Mrs. Robert M. Howe
Dr. and Mrs. Richard David Judge
Shirley Y. and Thomas E. Kauper
Sally and David Kennedy
Richard C. and Jacqueline H. Lewis
Mr. and Mrs. Carl J. Lutkehaus, Jr.
Paul W. and Ruth S. McCracken
Rebecca McGowan and Michael
Staebler
Mr. and Mrs. William Palmer
Dr. and Mrs. Michael Papo
Maxine and Wilbur K. Pierpont
John and Dorothy Reed
Mary Caroline Rottschafer
Mr. and Mrs. Charles L. Sargent
Dick and Norma Sarns
Professor Thomas J. and Ann Sneed
Schriber
Carol and Irving Smokler
Maya Savarino and Raymond
Tanter
Robert R. Tisch
Jerrold G. Utsler
Mary and Ron Vanden Belt
Dr. and Mrs. Francis V. Viola, III
Mr. and Mrs. Theodor R. Von
Voigtlander
Mr. and Mrs. Marc R. von Wyss
Jerry and Elise Weisbach
Ruth and Gilbert Whitaker
Paul and Elizabeth Yhouse
R. Roger and Bette F. Zauel

Sponsors

Dr. and Mrs. Gerald D. Abrams
Bonnie and Gardner Ackley
Robert and Martha Ause
Bradford and Lydia Bates
Mr. Hilbert Beyer
Mary Steffek Blaske and Thomas
Blaske
Mr. and Mrs. W. Michael
Blumenthal
Charles and Linda Borgsdorf
Mr. and Mrs. Allen P. Britton
John H. and Barbara Everitt Bryant
Daniel T. Carroll and Julie A.C.
Virgo
Jean M. and Kenneth L. Casey
Dr. and Mrs. George Chatas
Don and Betts Chisholm
Mr. and Mrs. David S. Clyde
Mr. and Mrs. Roland J. Cole
Jeffrey and Cynthia Colton
Katharine and Jon Cosovich
Ray and Eleanor Cross
Mr. and Mrs. Arthur W. Ehrlicher
Mr. John W. Etsweiler, III
Dr. and Mrs. William L. Fox
Woody and Rosemary Geist
Henry and Beverly Gershowitz
Ruth and William Gilkey
Drs. Sid Gilman and Carol Barbour
Fred and Joyce Ginsberg
Vivian Sosna Gottlieb and Norm
Gottlieb
Dorothy Greenwald
Carl E. and Julia H. Guldberg
Marcia and Jack Hall
Mr. and Mrs. Elmer F. Hamel
Mrs. Robert Hamilton
Mr. and Mrs. William B. Holmes
Dr. and Mrs. Verne L. Hoshal, Jr.
Ralph and Del Hulett
James R. and Millie Irwin
Gretchen and John Jackson
Edith Staebler Kempf
Howard King and Elizabeth Sayre-
King
A. William and Bethany L. Klinke
Jerome and Geraldine Koupal
Barbara and Charles Krause
Jack and Roberta Lapidés
Edwin S. and Edwin J. Lindberg
Dr. Dean S. Louis

John and Cheryl MacKrell
Jack and Joanne Martin
Charlotte McGeoch
Richard and Elizabeth McLeary
Dr. Barry Miller
Dr. and Mrs. Joe D. Morris
Mr. and Mrs. Cruse W. Moss
William and Joan Olsen
Dr. and Mrs. Travis Olson
Joe and Karen O'Neal
Mr. and Mrs. Charles Overberger
William and Christine Price
Tom and Mary Prancing
Elisabeth J. Rees
Dr. and Mrs. Rudolph E. Reichert
William and Katherine Ribbens
Dr. and Mrs. Amnon Rosenthal
Mrs. Bernard J. Rowan
Mr. and Mrs. F. Allan Schenck
Mrs. Charles A. Sink
Mrs. James H. Spencer
Miriam Stephan
Dr. and Mrs. Jeffrey K. Stross
Mr. and Mrs. Herbert H. Upton, Jr.
Elmer Gilbert and Lois Verbrugge
Chuck and Becky Vest
Dennis and Joyce Wahr
Marina and Robert Whitman
Len and Maggie Wolin

Benefactors

Armand and Marilyn Abramson
Kenneth and Carol Adam
Peter and Carlene Aliferis
Mr. and Mrs. George E. Amendt
Andrew L. Amort
Herb and Carol Amster
Joan and David Anderson
David Andrea
Gigi and Tim Andresen
Mr. and Mrs. Max K. Aupperle
Dr. Robert W. and Laurie Baker
M.A. Baranowski
Karen and Karl Bartscht
Mr. and Mrs. Raymond O. Bassler
Hermann and Hella Baumann
Neal T. Bedford
Henry J. Bednarz
Dr. and Mrs. Rodney R. Bentz
Dr. and Mrs. Gerald Berlin
Raymond and Janet Bernreuter
Mr. and Mrs. Philip Berry
Suzanne A. and Frederick J. Beutler

Dr. and Mrs. John C. Bilello
Visvaldis Biss
Bob and Liz Bitterman
Professor H. Harlan Bloomer
Sue and Bob Bonfield
Mr. William R. Brashear
Ernie and Betsy Brater
Mr. and Mrs. Robert P. Briggs
Helen L. Brokaw
David and Sharon Brooks
Gary K. Brown
Hugh C. and Ella M. Brown
Susan S. and Wesley M. Brown
Dr. and Mrs. Robert Buchanan
Lawrence and Valerie Bullen
Arthur and Alice Burks
Marjorie H. Burnell
Mr. and Mrs. Richard J. Burstein
Mrs. Wellington R. Burt
Jean W. Campbell
Mr. and Mrs. Charles Cannell
Mr. and Mrs. David Caplan
Bruce and Jean Carlson
Dr. Michael Casher
Mr. and Mrs. Tsun Chang
Mr. and Mrs. Raymond S. Chase
Mr. Robert Choate
Pat Clapper
Leon and Heidi Cohan
Maurice and Margo Cohen
Mr. Kenneth Collinson
Wayne and Melinda Colquitt
Mr. William V. Coltre
Anne M. and Edward J. Comeau
Mr. and Mrs. R.G. Conger
Lolagene C. Coombs
Clifford and Laura Craig
H. Richard and Florence Crane
Merle and Mary Ann Crawford
Richard and Penny Crawford
Dr. and Mrs. Ronald Cresswell
Mr. and Mrs. Horace W. Davenport
Ronald and Dolores Dawson
Robert and Barbara Ream Debrodt
Ellwood and Michele Derr
Dr. and Mrs. Preston V. Dilts, Jr.
Mary H. and William T. Dobson
Carol and Dixon Doll
Dr. and Mrs. Edward F. Domino
Colby and John C. Duffendack
Mr. and Mrs. Robert S. Dunham
Charles and Dorothy Dybvig
Morgan and Sally Edwards
Mrs. Robert C. Elderfield
Joan and Emil Engel
David and Lynn Engelbert

Mark and Patricia Enns
Dr. and Mrs. Stefan S. Fajans
Daniel and Judith Fall
Dr. and Mrs. John A. Faulkner
Inka and David Felbeck
Dr. James F. Filgas
Sidney and Jean Fine
Mrs. Gerald J. Fischer
Mr. and Mrs. R.W. Fleming
Dr. and Mrs. George W. Ford
Anne and James Ford
Mr. and Mrs. George H. Forsyth
Doris and Hal Foss
Phyllis Foster
Dr. and Mrs. David Noel Freedman
Deborah and Ronald Freedman
Judy and Richard Fry
Mr. and Mrs. Victor Gallatin
Mrs. Don Gargaro
Helen Gay
Beverly and Gerson Geltner
Donald and Elizabeth Gresch
Ronald Gibala and Janice Grichor
Mr. and Mrs. Clement Gill
Robert Glasgow
Paul and Anne Glendon
Melvyn and Muriel Gluckman
Dr. Alexander Gotz
Mrs. William C. Grabb
Ruth B. and Edward M. Gramlich
Jerry and Mary K. Gray
Professor and Mrs. Whitmore Gray
Mr. Seymour D. Greenstone
Mr. and Mrs. Donald Griffith
John R. and Helen K. Griffith
Marsha and Robert Gross
Mrs. William Halstead
Mr. Lawrence T. Harbeck
Hugh L. Harsha
Clifford and Alice Hart
Harlan and Anne Hatcher
Douglas A. and Anne M. Hayes
Debbie and Norman Herbert
Bertram Herzog
Charles and Virginia Hills
Mr. and Mrs. Maurice B. Hodges
Robert and Frances Hoffman
John F. and Mary Helen Holt
Mrs. Janet Woods Hoobler
Kristin and Wolfgang Hoppe
Mr. Arthur G. Horner
Dr. and Mrs. W.N. Hubbard, Jr.
Mrs. V.C. Hubbs
Edward E. Hucke
Mr. and Mrs. George Huebner
Ralph and Del Hulett

Mrs. George R. Hunsche
Ruth Hunter
John and Pat Huntington
Mr. and Mrs. E. Richard Hurst
Paul Hysen and Jeanne Harrison
Alice and Keki Irani
Ms. Nancy Bird-Jacobson
Donald E. Jahncke
Mr. and Mrs. Emil H. Jebe
Wallie and Janet Jeffries
Keith and Kay Jensen
Paul D. Johnson
Mr. and Mrs. Judson Johnson
Mr. and Mrs. Richard A. Jones
John and Linda Jonides
Stephen G. Josephson and Sally C. Fink
Beatrice H. and Robert L. Kahn
Allyn and Sherri Kantor
Mr. and Mrs. Jacob Kellman
Richard and Ann Kennedy
Emily and Ted Kennedy
Charles E. Kimmel
David Klein and Heidi Castleman
Hermine R. Klingler
Mr. and Mrs. Arthur W. Klinke
Masato and Koko Koreeda
Dimitri and Suzanne Kosacheff
Alan and Jean Krisch
Mr. and Mrs. Leo Kulka
Barbara and Michael Kusisto
Dr. and Mrs. James Labes
Mr. and Mrs. Lee E. Landes
Ms. LaVonne Lang
Mae and Arthur Lanski
Mr. and Mrs. Henry M. Lapeza
Dorothy and John Lapp
Dr. Donald and Lois Largo
Ms. Olya K. Lash
Neal and Anne Laurance
John K. Lawrence
Professor and Mrs. John C. Lee
Leo A. Legatski
John and Ann Leidy
Mr. and Mrs. Fernando S. Leon
Professor and Mrs. Harold M. Levinson
Dr. and Mrs. Allen Lichter
Carolyn and Paul Lichter
Jody and Leo Lighthammer
Daniel E. and Susan S. Lipschutz
Vi-Cheng and Hsi-Yen Liu
Harold J. Lockett, M.D.
Rebecca and Lawrence Lohr
Ronald Longhofer
Leslie and Susan Loomans
Dr. and Mrs. Charles P. Lucas
Pamela and Robert Ludolph

Lawrence N. Lup
Edward and Barbara Lynn
Paul and Brigitte Maassen
Steve and Ginger Maggio
Virginia Mahle
Mr. and Mrs. John H. Mahler
Carla and Alan Mandel
Dr. and Mrs. Edwin L. Marcus
James and Ingrid Martin
Margaret and Harris McClamroch
Mr. and Mrs. John McCollum
Donald A. McCrate
Mary and W. Bruce McCuaig
Robert and Doris Melling
Ann and Robert Meredith
Herman and Bernice Merte, Jr.
Mrs. Vaden W. Miles
Dean and Dolores Millard
Mr. and Mrs. Evan F. Miller
George and Jacquelyn Miller
James M. Miller
Ronald G. Miller
Dr. and Mrs. James V. Neel
Dr. and Mrs. Haskell Newman
Virginia and Gordon Nordby
Dr. and Mrs. Frederick C. O'Dell
Mr. and Mrs. Israel A. Oksenberg
Mr. and Mrs. David W. Osler
Dr. and Mrs. Sujit K. Pandit
Helen and George Papageorgiou
Colonel and Mrs. Clare Passink
Mrs. Charles W. Phillips
Mr. and Mrs. William J. Pierce
Meryl D. and Richard A. Place
Major General and Mrs. Robert R. Ploger
Mr. and Mrs. Robert L. Plummer
Eleanor and Peter Pollack
Roger and Cynthia Postmus
Mrs. J.D. Prendergast
Lawrence and Ann Preuss
Mr. and Mrs. Millard Pryor
Leland and Elizabeth Quackenbush
Mrs. Gardner C. Quarton
Michael and Helen Radock
Katherine R. Reebe
Jim and Bonnie Reece
Stanislav and Dorothy R. Rehak
Dr. and Mrs. Richard D. Remington
Katie and Duane Renken
Glenda Renwick
Mr. and Mrs. William D. Revelli
Mr. H. Robert Reynolds
Paul Rice
Jack and Margaret Ricketts
Mr. and Mrs. Stephen J. Rogers
Daria A. Rothe

Dr. Nathaniel H. Rowe
Samuel and Irene Rupert
Mr. and Mrs. William F. Ruzicka
Mr. and Mrs. Harold Y. Sakoda
Jerome M. and Lee Ann Salle
Dr. and Mrs. David W. Schmidt
Mr. and Mrs. Mark Schmidt
G.M. and M.F. Schmit
Dr. and Mrs. Charles R. Schmitter, Jr.
Carl and Charlene Schmult
Mrs. Richard C. Schneider
Dr. and Mrs. David Schottenfeld
Michael and Janet Shatusky
Julianne and Michael Shea
Victoria Sheagren
George and Helen Siedel
Carl and Jari Smith
Pamela M. Smith
Mr. and Mrs. Robert W. Smith
Mr. and Mrs. Paul A. Snearline
Mr. and Mrs. Michael J. Sprecher
E. Lloyd and Theodore J. St. Antoine
Neil and Burnette Staebler
Mrs. Ralph Steffek
Kenneth and Edith Stephanz
Victor and Marlene Stoeffler
Dr. and Mrs. Stanley Strasius
James R. and Jeraldine M. Suits
Mr. and Mrs. J. Wilner Sundelson
Mr. J. Phillip and Ann F. Surratt
Steven and Mary Swanson
Jean Kumiko Takeuchi
Frank and Carolyn Tarzia
Mary D. Teal
Mr. and Mrs. Robert M. Teeter
Scott B. Terrill
Richard G. and Yvonne R. Teske
Dr. and Mrs. E. Thurston Thieme
Mr. and Mrs. Robert H. Thornton
Estelle Titiev
Mr. and Mrs. Terril O. Tompkins
John and Mary Treat
Jonathan Trobe and Joan Lowenstein
Alvan and Katherine Uhle
Dr. and Mrs. John F. Ullrich
Madeleine Vallier
Jack and Marilyn van der Velde
Lia and Bram Van Leer
Warren H. and Florence S. Wagner
Mr. and Mrs. Fred R. Waidelich
Bruce and Raven Wallace
Dr. and Mrs. Philip C. Warren
Dr. and Mrs. Andrew S. Watson
Karl and Karen Weick
Lawrence A. Weis and Sheila Johnson
Robert O. and Darragh H. Weisman

Angela and Lyndon Welch
Alice and Ira Wheatley
B. Joseph and Mary White
Mrs. Charles K. White
Timothy and Sally White
Dr. and Mrs. Max Wicha
The Kenneth G. Wilhelm Family
Brymer and Ruth Williams
Shelly F. Williams
Thomas and Iva Wilson
Dr. and Mrs. S.B. Winslow
Marion T. Wirick
Mr. and Mrs. Mark Wolcott
Dr. and Mrs. Ira S. Wollner
Colonel and Mrs. Ernest A.H.
Woodman
Mr. and Mrs. A.C. Wooll
Stan and Pris Woollams
Laura and T. Wallace Wrathall
Donald W. Wyche
Mr. and Mrs. Edwin H. Young
Nancy and Martin Zimmerman
Mr. and Mrs. Ronald G. Zollars

Patrons

Victor Adamo and Michelle Smith
Tim and Leah Adams
Bernard and Raquel Agranoff
Jody Alexander
Mr. Augustine Amaru
Mr. and Mrs. David Aminoff
Andrew L. Amort
Casimer Andary
James and Cathleen Andonian
Toichi Aoyagi
Bert and Pat Armstrong
Eric and Nancy Aupperle
Mr. and Mrs. William E. Austin, Jr.
Dr. and Mrs. Noyes L. Avery
Jerald and Virginia Bachman
Dean and Virginia Baker
Barbara and Daniel Balbach
Andrea and Simon Bare
Mr. and Mrs. Cyril H. Barnes, Jr.
Donald C. Barnette, Jr.
Dr. and Mrs. Robert Bartlett
Leslie and Anita Bassett
Dr. and Mrs. Jere M. Bauer
Dr. and Mrs. Gregory W. Baumann
Florence N. Beach
Robert B. Beers
Mary-Martha and William Beierwaltes
William and Marie N. Bell
Betty and Harry Benford
Helen V. Berg
Ruth Ann and Stuart J. Bergstein

Bharat C. and Patsy A. Bhusman
Mr. and Mrs. Carl F. Binder
Elizabeth S. Bishop
Ronald and Nancy Bishop
George Blum, M.D.
Dr. and Mrs. Lynn W. Blunt
Mr. and Mrs. Milford Boersma
Beverly J. Bole
Mr. and Mrs. Howard Bond
Robert and Sharon Bordeau
Edward and Ruth Bordin
Gil and Mona Borlaza
Paul D. Borman
Drs. Robert Bradley and Charlotte
Mistretta
Roger M. Bradshaw
Mr. Thomas Brewer
Dr. and Mrs. William D. Briggs
Mr. Alan Brown
Dr. and Mrs. C. Arch Brown
Mr. and Mrs. Donald R. Brown
Morton B. and Raya Brown
Mr. John M. Brueger
Mrs. Webster Brumbaugh
Steve Buchbinder
Ms. Marilyn Buss
Helen S. Butz
Alexander Buzas
Letitia J. Byrd
Mr. and Mrs. Edwin F. Carlson
James and Priscilla Carlson
Roy A. and Constance R. Carpenter
Dr. and Mrs. James T. Cassidy
Maggie Cavallaro
Mary and David Chambers
Mr. and Mrs. Nicholas G. Chapekis, Sr.
J. Wehrley and Patricia Busch Chapman
Jean Chenoweth
Dr. Kyung and Young Cho
Nancy Cilley
Mrs. Irene W. Cleveland
Dr. Bennett J. and Alice S. Cohen
Howard and Vivian Cole
Mr. and Mrs. L. Thomas Conlin
Bill and Bonnie Coombe
Mr. and Mrs. Gage R. Cooper
Dr. and Mrs. Arnold G. Coran
Alan and Bette Cotzin
Marjorie A. Cramer
Mr. and Mrs. James I. Crump
Roger A. and Elizabeth E. Cunningham
Blaine L. Curtis
Audrey and Edward Curtis
Mr. and Mrs. Robert Damschroder
Paul and Mary Ellen Danos
Sandra and Sheldon Danziger

Peter P. and Susan T. Darrow
Jane and Gawaine Dart
Dr. and Mrs. Charles Davenport
Mr. and Mrs. Arthur W. Davidge
Edwina Davis and Saul Nosanchuk
Ferol and H.T. Decker
James M. Deimen
Nicholas and Elena Delbanco
Mildred F. Denecke
Benning and Elizabeth Dexter
Mr. and Mrs. Joseph A. Diana
Dr. Macdonald and Carolin Dick
Bob and Linda Diebold, Jr.
Nelson and Eleanor Dingle
Helene Dobryden
Dr. and Mrs. Edward R. Doezema
Mrs. Carl T. Doman
Thomas and Esther Donahue
Dr. and Mrs. Steven Donn
Thomas Doran
Dick and Jane Dorr
Mr. and Mrs. Bruce Douglas
Mr. and Mrs. William Gould Dow
Louis Doyle
Roland and Diane Drayson
Allan and Cecilia Dreyfuss
Dr. and Mrs. Howard V. Dubin
Nancy Griffin DuBois
Ivan and Betty Anne Duff
Duane F. Dunlap and Laura M.
Merrihew
Mr. and Mrs. Peter L. Duren
George C. and Roberta R. Earle
Mr. and Mrs. William G. Earle
Martin and Rosalie Edwards
Mrs. Thomas C. Edwards
Charles and Julia Eisendrath
Marilyn and Bob Eisenhardt
Dr. Alan S. Eiser
Judge and Mrs. S.J. Elden
Dr. and Mrs. J.L. Epstein
Mr. and Mrs. Donald F. Eschman
Joel L. Evilsizer
Mr. and Mrs. Robert B. Fair, Jr.
Barbara and Garry Faja
Dr. and Mrs. Harvey Falit
Claudine Farrand and Daniel Moerman
Phil and Phyllis Fellin
Norman and Jeanne Kierman Fischer
and Family
Mary Jane and Charles Fisher
Ernest and Margot Fontheim
David A. Fox and Paula L. Bockenstedt
Howard P. and Margaret W. Fox
Dr. Irving H. and Gloria Fox
Randall L. Frank
Mr. and Mrs. Douglas D. Freeth

Harriet and Daniel Fusfeld
 Miss Frances Gardner
 Mrs. Shirley H. Garland
 Dr. and Mrs. Stanley M. Garn
 Mr. and Mrs. Garnet R. Garrison
 Dr. and Mrs. Thomas Gelehrter
 Michael Gerstenberger
 W. Scott Gerstenberger and Elizabeth A. Sweet
 Allan Gibbard
 Dr. and Mrs. Paul W. Gikas
 Dr. and Mrs. Albert O. Girz
 Mona and Edward Goldman
 Irwin Goldstein and Marty Mayo
 Adon A. Gordus
 Ms. Naomi Gottlieb
 Elizabeth Needham Graham
 Ruth B. and Edward M. Gramlich
 Susan and Mark Griffin
 The Griffith Family
 Werner H. Grilk
 Hedi Groenewold
 Mary and Bob Grover
 Mr. Fred Haddock
 Don P. Haefner and Cynthia J. Stewart
 George and Kay Hall
 Harry L. and Mary L. Hallock
 Stephen G. and Mary Anna Harper
 Susan R. Harris
 Walter and Dianne Harrison
 Roger and Lou Haskett
 Rhoda and Firman Hass
 Michael and Cynthia Hathaway
 Larry and Jean Hauptman
 Kathleen L. Hawkins
 William F. Hayden
 Mr. and Mrs. Robert L. Hayes
 Mr. and Mrs. Albert Heinrich
 Dr. and Mrs. Albert E. Heins
 Dr. and Mrs. John A. Henke
 Larry Henkel and Jacqueline Sterns
 Kathy and Rudi Hentschel
 Mrs. Margaret Martin Hermel
 Fred and Joyce Hershenson
 Herb and Dee Hildebrandt
 Dr. and Mrs. W.A. Hiltner
 Lynn J. Hobbs
 Raymond Donald Hobbs, M.D.
 Joanne and Charles Hocking
 Louise Hodgson
 Suzanne Hogg
 John and Maurita Holland
 Howdy and Carol Holmes
 Dr. and Mrs. F.B. House
 Graham and Mary Jean Hovey
 Dr. Joel D. Howell and Dr. Linda Samuelson
 Sun-Chien and Betty Hsiao
 Mr. and Mrs. Raymond Huetteman
 JoAnne W. Hulce
 Dr. Ann D. Hungerman
 Mrs. Laurin R. Hunter
 Mr. and Mrs. Russell L. Hurst
 Ms. Dorothy A. Huskey
 Diane and Steve Imredy
 Ann K. Irish
 Perry Elizabeth Irish
 Mitzi and Sam Irwin
 Mr. Stuart A. Isaac
 Mr. Alan Israel
 Esther Ann Jackson
 Professor and Mrs. John H. Jackson
 Jean and Harold Jacobson
 John M. Jenks
 Jean and Kenneth Jochim
 Mr. and Mrs. Donald L. Johnson
 Paul and Olga Johnson
 Anne Hough Jones
 James J. Judson
 Dr. Stevo and Mrs. Susan Julius
 Cynthia Kabza
 Dr. and Mrs. Mark S. Kaminski
 Alex and Phyllis Kato
 Elizabeth Harwood Katz
 Suzanne Kaufman
 Mrs. Anna Kauper
 Roberta C. Keniston
 John B. Kennard
 Richard and Ann Kennedy
 Robert and Gloria Kerry
 Paul and Leah Kileny
 Mr. and Mrs. Jaejong Kim
 Rhea and Leslie Kish
 Drs. Paul and Dana Kissner
 Shira and Steven Klein
 Mrs. Karl S. Klicka
 Mr. and Mrs. Henry J. Klose
 Dr. and Mrs. James Knake
 Mr. and Mrs. Joseph J. Kokoszka
 Elizabeth Humes and Sylvan Kornblum
 Ed and Marguerite Kowaleski
 Jean and Dick Kraft
 Christopher J. Kresge
 Alexander Krezel
 Mr. and Mrs. Samuel Krimm
 Dr. and Mrs. Richard A. Kucipal
 Mr. and Mrs. D.G. Labella
 Mr. and Mrs. Seymour R. Lampert
 Mr. and Mrs. C.E. Landes
 Robert and Leslie Lazzerin
 Robert F. Lewis and Barbara A. Petersen
 Mr. and Mrs. William C. Lighthall
 Ms. Deborah A. Lloyd
 Naomi E. Lohr
 Peter A. Long
 Mr. and Mrs. Richard S. Lord
 Dr. Robert G. Lovell
 Marilyn and Frode Maaseidvaag
 Susan E. Macias
 Mark T. Mahlberg
 Claire and Richard Malvin
 Melvin and Jean Manis
 Dr. and Mrs. J.E. Martin
 Mr. and Mrs. William C. Martin
 Dr. and Mrs. Josip Matovinovic
 Jeanne L. McClaran
 Mrs. Lester McCoy
 W. Joseph McCune and Georgiana M. Sanders
 Griff and Pat McDonald
 Elaine J. McFadden
 Mr. and Mrs. F.N. McOmber
 Robert E. and Nancy A. Meader
 Martha and Dady Mehta
 Jerry and Rhona Meislik
 Robert and Doris Melling
 John and Sharene Menson
 Mr. and Mrs. Walter Metzger
 Charles and Helen Metzner
 Dr. and Mrs. Leo J. Miedler
 Jack and Carmen Miller
 Myrna and Newell Miller
 Robert R. and Frances H. Miller
 John and Dorothy Mohler
 Arnold and Gail Morawa
 Dr. and Mrs. George Morley
 Mary K. Moss
 Dr. Eva L. Mueller
 Dorothy V. Mummery
 Frederick C. Neidhardt and Germaine Chipault
 George J. Nichols
 Mr. and Mrs. Marvin Niehuss
 Richard and Susan Nisbett
 Mrs. A. Geoffrey Norman
 Mr. and Mrs. Richard S. Nottingham
 Marylen S. and Harold A. Oberman
 Dr. Leon T. Ofchus
 Garrick Ohlsson
 Gary and Judy Olson
 Dr. and Mrs. Mark Orringer
 Mr. and Mrs. M.F. Outwater
 Mrs. George L. Palmer
 Richard and Miranda Pao
 Donna D. Park
 Mr. and Mrs. Brian P. Patchen
 O.M. Pearl and Patricia M. Cobb
 Professor and Mrs. J. Raymond Pearson

Roy Penchansky
Mr. and Mrs. D. Maynard Phelps
Ms. Sharon Pignanelli
Dr. and Mrs. Bertram Pitt
Donald and Evonne Plantinga
Stephen and Tina Pollock
Norman and Anna Mary Postma
Drs. Edward and Rhoda Powsner
Robert and Mary Pratt
Bill and Diana Pratt
Ernst Pulgram
Catherine and George Stern Quick
Mr. and Mrs. Haran C. Rashes
Mr. and Mrs. Robert H. Rasmussen
Susan L. Rasmussen
Mr. and Mrs. Stephen Reading
Mr. and Mrs. Gareth Reed
Keith and Beth Reed
Mr. and Mrs. F.E. Richart, Jr.
Frances Greer Riley
Nicholas and Michelle Rion
M.A. Ritter
Thelma Gies Rivette
Peter Roberts and Shirley Casebolt
James and Marietta Robinson
Willard L. and Mary Ann Rodgers
Mr. and Mrs. Stephen J. Rogers
Robert and Joan Rosenblum
Dr. and Mrs. George C. Rosenwald
Gustave and Jacqueline Rosseels
Dr. Nathaniel H. Rowe
Jonathan Rubin and Gretta Spier
Dr. and Mrs. Raymond W. Ruddon
Mr. and Mrs. James D. Ryan
Dr. and Mrs. Thomas E. Ryan
Mitchell and Carole Rycus
Dr. and Mrs. Albert J. Sayer
Dr. and Mrs. John E. Schenck
William A. Schlecte and Laura Austin
Drs. Monica and David E. Schteingart
Steven and Elizabeth Schubiner
Mary and John Sedlander
Suzanne Selig
Harriet and Marvin Seini
Janet C. Sell
George H. and Mary M. Sexton
Howard and Aliza Shevrin
Thomas C. and Jean T. Shope
Hollis and Martha Showalter
Dr. Douglas and Barbara Siders
Mr. James Sidor
Kenneth and Margaret Silk
Drs. Terry and Dorit Silver
Dr. Albert and Mrs. Halina Silverman
Gene and Alida Silverman
Allan and Alene Smith

George and Mary Elizabeth Smith
Ernest and Sandra Sorini
Mr. and Mrs. Herbert W. Spendlove
Betty M. Stark
Ed Stein and Pat McCune
Professor and Mrs. Eric Stein
Robin Stephenson and Terry Drent
Professor and Mrs. Wolfgang F. Stolper
Mr. and Mrs. Louis J. Stout
Elizabeth L. Stranahan
Dr. Ruth H. Strang
Mrs. William H. Stubbins
Devere and Zita Sturm
Dr. Russell and Marie Swanson
Steven and Mary Swanson
Dr. Richard and June Swartz
Brian and Lee Talbot
Gerald and Susan Tarpley
Eva and Sam Taylor
George and Mary Tewksbury
Edgar and Mary Lou Thibodeau
Mary H. Thieme
Joseph Thompson
Dr. and Mrs. Merlin C. Townley
Penny and John Tropman
Dr. and Mrs. Vincent Turcotte
Mr. and Mrs. Warren C. Tyner
Mr. and Mrs. Robert Ullman
Hugo and Karla Vandersypen
William C. Vassell
Mrs. Olga Vedder
Sy and Florence Veniar
Mrs. Durwell Vetter
Isabel M. Vitale
Joe and Eleanor Voldrich
John and Maureen Voorhees
Mr. Gregory Walker
Eric and Sherry Warden
Harvey and Robin Wax
Mr. and Mrs. Stanfield M. Wells, Jr.
Mrs. Clara Whiting
Father Francis E. Williams
Mrs. Elizabeth Wilson
Professor and Mrs. Charles Witke
Charlotte Wolfe
John B. and Ann F. Woodward
Israel and Fay Woronoff
Charles R. and Jean L. Wright
Phyllis Wright
Dr. and Mrs. Clyde Wu
Mary Grace and Tom York
Carl and Mary Ida Yost
Mr. and Mrs. A. Michael Young
Mr. and Mrs. Martin Zeile
Dr. Charles Zill

Donors

A.M. Abbatiello
Judge and Mrs. William F. Ager
Michihiko and Hiroko Akiyama
Mr. and Mrs. Gordon E. Allardyce
Phyllis and Harold Allen
Mr. and Mrs. Wickham Allen
Forrest Alter
Mr. and Mrs. Charles T. Anderson
Catherine M. Andrea
Ernest and Suzanne Andrews
Donna and Todd Anuskiewicz
Harlene and Henry Appelman
Everett Armstrong and Jean Arnold
Thomas J. and Mary E. Armstrong
Penelope and Arthur J. Ashe III
Monica and Dan Atkins
John and Rosemary Austgen
Dr. and Mrs. J. David Ausum
Michael Avsharian
Charlene and Eugene Axelrod
Donald and Shirley Axon
Jonathan and Marlene Ayers
Linda Bennett and Dr. Robert Bagramian
Robert L. Baird
Hugh E. Baker
Mr. and Mrs. Richard P. Baks
Mr. and Mrs. John W. Barfield
Dr. Ruth M. Barnard
Norman and Mary Barnett
Dr. and Mrs. Mason Barr, Jr.
Joan W. Barth
John W.H. Bartholomew
Mrs. Beverley M. Baskins
Harold F. Baut
William D. and Marie N. Bell
Eva Benjamin
Dr. and Mrs. Ronald M. Benson
Mr. and Mrs. Ib Bentzen-Bilkvist
Mr. Al Berman
Mr. and Mrs. Mark A. Bernhard
Robert Hunt Berry
Sheldon and Barbara Berry
Roderick Bieber and Catherine McMichael
Mr. and Mrs. Guida A. Binda
Joan and Howard Binkow
William and Ilene Birge
Art and Betty J. Blair
Linda and Marshall Blondy
John E. Bloom
Bradley and Wendy Bloom
C. Richard and Patricia S. Boland
Mark D. Bomia
Lola J. Borchardt
Paul D. Borman

Mr. and Mrs. Morris Bornstein
 Judge and Mrs. Earl E. Borradaile
 Jeanne and David Bostian
 John and Leora Bowden
 Mr. and Mrs. Bruce M. Bowman
 Paul and Anna Bradley
 Roger Bradshaw
 George and Lucia Brewer
 Cy and Luan Briefer
 Dale and Nancy Briggs
 Norman and Doreen Bristol
 Mark and Judith Bromberg
 Dr. Paulette Bromberg
 Razelle and George Brooks
 Mr. and Mrs. Olin L. Browder
 Linda Brown and Joel Goldberg
 Sylvia C. Brown
 Dr. Joachim Bruhn
 Mrs. Hempstead S. Bull
 Mrs. Sally Burden
 Sibyl Burling
 Mr. and Mrs. William Burmeister
 Mr. Daniel Burns
 Ms. Sarah M. Burns
 Lucile C. Buta
 Mr. and Mrs. Robert S. Butsch
 Mrs. Theodore Cage
 Dr. and Mrs. Darrell A. Campbell
 Dr. Ruth Cantieny
 Michael E. Carlson
 Philip C. Carpenter
 Jeannette and Robert I. Carr
 Carolyn M. Carty and Thomas H. Haug
 Joanne C. Ceru
 Mr. and Mrs. J.P. Chandler
 Bill and Susan Chandler
 Daniel and Linda Chapman
 Cecelia Chernick
 Mark and Joan Chesler
 Dr. and Mrs. Alfred Ching
 Jong-Wang Chow
 Edward and Rebecca Chudacoff
 Maggie and Toby Citrin
 Mr. Joseph F. Clayton
 Mrs. Irene W. Cleveland
 Roger N. and Mary W. Coe
 Dorothy B. Coffey
 Jan and Carl Cohen
 Hubert and Ellen Cohen
 Hilary and Michael Cohen
 Willis and Linda Colburn
 Dr. and Mrs. John Collins, Jr.
 Alfred and Georgia Conard
 Mr. David E Congdon
 Graham H. Conger
 Dr. Thomas Conner
 Stanley S. Cook
 Peter and Katherine Cooley
 Dr. and Mrs. William W. Coon
 Charlotte and Robert Copp
 Ms. Elaine Cousins
 David and Myrtle Cox
 Mary Crawford
 Dr. Mary C. Crichton
 Marylee Dalton
 Dr. Francis M. and Shirley H. Daly
 Sunil and Merial Das
 Ed and Ellie Davidson
 Mr. and Mrs. David Dawson
 Mr. and Mrs. Robert K. Denison
 Lorenzo and Bernadette DiCarlo
 Tom and Jean Dickinson
 Dr. Michael DiPietro and Alice Fishman
 Douglas and Ruth Doane
 Father Timothy J. Dombrowski
 Dorothy and Avedis Donabedian
 Wally and Marlene Donoghue
 Mr. and Mrs. Robert C. Douglas
 Mr. and Mrs. Harry Dreffs
 Mr. and Mrs. Allan Dreyfuss
 John J. Dryden and Diana Raimi
 George C. and Roberta R. Earl
 Dwight and Mary Ellen Eckler
 The Rev. and Mrs. Ralph A. Edwards
 Dr. and Mrs. Andrew C. Eisenberg
 Dr. and Mrs. Irwin Eisenfeld
 Barry and Joyce Eisenstein
 David A. Eklund
 Sol and Judith Elkin
 Dr. and Mrs. Charles N. Ellis
 Beulah Elving
 Mrs. Genevieve Ely
 Jack and Wilma Elzay
 Mack and Marcia Endo
 Ellen C. Wagner and Richard Epstein
 Robert and Sandra Erickson
 Stephen and Pamela Ernst
 Mrs. Chris Everhardus
 Adele Ewell
 Dr. and Mrs. David N. Ewing
 Faculty Wives Club-Ann Arbor Public School
 Mary K. Fancher
 Pierce H. Farrar
 Barbara L. Ferguson
 Erika and Dennis Ferguson
 Mr. and Mrs. Melvin G. Fiegel
 Sharon Fike
 Carol and Aaron Finerman
 L. Alan and Nancy Finlayson
 Mrs. Carl H. Fischer
 Mr. and Mrs. John E. Fisher
 Mrs. Selma Fisher
 Susan R. Fisher and John W. Waidley
 Joe Stroud and Kathy Fojtik
 Violet M. Ford
 Mr. and Mrs. Jarvis Franzblau
 Richard and Joann Freethy
 Otto W. and Helga B. Freitag
 Linda and Larry French
 Bart and Fran Frueh
 Mr. Mack Fuhrer
 Ms. Rebecca Gaffney
 Mr. and Mrs. Arthur Gallagher
 Helen and Jack Garris
 Janet and Charles Garvin
 Ms. Myrtle Gasilo
 Professor and Mrs. David M. Gates
 Sheri L. Germane
 Mr. and Mrs. David W. Gidley
 Mr. and Mrs. Larry Gilbert
 Elida F. Giles
 Mrs. Sidney F. Giles
 Mr. John Gilstorf
 Mr. David W. Gnegy
 Dr. and Mrs. William C. Godwin
 Deborah C. Goebel
 Mr. and Mrs. Albert Goldberg
 Edith and Henry Gomberg
 Eszter Gombosi
 Audrey Gomon
 Ellen Gonter
 Jesse E. and Anitra Gordon
 Sheryl T. and Todd W. Grant
 Mr. and Mrs. Serge Gratch
 Lewis and Mary Green
 Lila and Bob Green
 Dr. and Mrs. Lazar J. Greenfield
 G. Robinson and Ann Gregory
 Louise and Bill Gregory
 Daphne and Raymond Grew
 Mr. and Mrs. James J. Gribble
 David and June Griffinhagen
 Charles D. and Carol C. Groves
 Paul L. Gruchala
 Cyril Grum and Cathy Strachan
 Doris and Harvey Guthrie
 Elliott and Carol Guttman
 Dorothy S. Haake
 James and Veronica Haines
 Margo Halsted
 Frances Hamman
 Barbara H. Hammitt
 Dora E. Hampel
 David and Patricia Hanna
 Carlos D. Hansen
 Ken Harbour
 Mr. and Mrs. Glenn A. Harder
 Stephen G. and Mary Anne Harper

Dr. and Mrs. George Harris
 Mr. and Mrs. Robert Harris
 Walter and Dianne Harrison
 Kathleen A. Hart
 M. Jean Harter
 Elizabeth C. Hassinen
 Mr. and Mrs. Robert F. Haugh
 Candy Hawley
 Professor Jeffrey Heath
 Mr. and Mrs. Jeffrey J. Helmick
 Margaret and Walter Helmreich
 Norma and Richard Henderson
 Karl P. Henkel
 Dr. and Mrs. Keith S. Henley
 Virginia R. Henry
 Carol and Gary Herion
 Mr. and Mrs. Albert Hermalin
 Mr. and Mrs. Ramon R. Hernandez
 Ms. Sandra L. Higgins
 Mrs. Leonard E. Himler
 Mr. Nigel Hinds
 John and Florence Hinman
 Peter Hinman and Elizabeth Young
 Lynn L. Hobbs
 Mr. and Mrs. George W. Hoddy
 Jane and Dick Hoerner
 Julian and Diane Hoff
 Dr. Theodore G. Hoffman
 Mimi and Helmut Holland-Moritz
 Mr. and Mrs. Lee Hollmann
 Dr. Ronald and Ann Holz
 Dr. and Mrs. E.A. Homeister
 Mr. and Mrs. Harry Hopkins
 Ms. Monica T. Houghton
 Nancy Houk
 James S. House and Wendy Fisher
 House
 Oscar C. Huang
 Harry and Ruth Huff
 Ms. Jane H. Hughes
 Mr. and Mrs. David D. Hunting, Jr.
 Eileen and Saul Hymans
 Bailie, Brenda and Jason Imber
 Robert B. Ingling
 Mr. and Mrs. Sid Israel
 Harriet C. Jameson
 Mr. and Mrs. Z.J. Jania
 John D. Janicek
 Mr. and Mrs. Zoltan J. Janosi
 Dan and Sandy Janusis
 Mr. and Mrs. Jerome Jelinek
 Mr. and Mrs. Peter T. Jessup
 Jane Durfee Johns
 James S. Johnson
 Dr. and Mrs. Joseph E. Johnson
 Wilma Johnson
 Elizabeth and Lawrence Jordan
 Dominic M. Justewicz
 Mr. and Mrs. Norbert Kaczmarek
 Mr. Yasuhiro Kamio
 Lois and Gordon Kane
 Mr. and Mrs. Irving Kao
 Mr. and Mrs. Wilfred Kaplan
 Samuel H. Katz
 Mary L. Kemme
 Frank and Patricia Kennedy
 Mr. Thomas Kenney
 David and JoAnn Keosaian
 Shake Ketejian
 Donald F. and Mary A. Kiel
 Jeanne M. Kin
 Clair H. Kissel
 James and Jane Kister
 Emery and Diane Klein
 Kay Delle Koch
 Dr. Steve T. Koeff
 Seymour Koenigsberg
 Fumio Komatsu
 Ann Marie Kotre
 Mr. and Mrs. L. Seelbach Kraft
 Kenneth C. Kreger
 Ms. Lillian Krezel
 John A. and Justine Krsul
 Nancy Kushigian
 Dr. and Mrs. Bert N. La Du, Jr.
 James and Karen Lahey
 Dr. Jeffery Lampert
 Alice and Henry Landau
 Dr. Stephen G. Landau
 Richard and Neva Larson
 Ardith and John Laskowski
 Edward W. Lauer
 Ted and Wendy Lawrence
 Judith and Jerold Lax
 Mr. and Mrs. Charles E. Leahy
 David Lebenbom
 Mr. and Mrs. Charles F. Lehmann
 Mrs. Paul Allen Leidy
 Sue Leong
 Dr. David J. Lieberman
 George and Mary Lindquist
 Nathan and Eleanor Lipson
 Jane Lombard
 Mr. and Mrs. E. Daniel Long
 Art and Pearl Longmate
 Luisa Lopez-Grigera
 Lawrence and Susan Loucka
 Merrill Lougheed Poliner and Robert M.
 Lougheed
 Lynn Bennett Luckenbach
 John and Jane Lumm
 John J. Lynch, III
 William and Judith Lynn
 Donald and Doni Lystra
 Dr. and Mrs. James C. MacBain
 Alan B. Macnee
 Reverend and Mrs. Philip Rodgers
 Magee
 Gertrude Maglott
 Ella A. Mahnken
 Mikhail I. Malkin
 Mr. and Mrs. D.H. Malloure
 Dr. John H. Malone
 Frank Maly and Kathleen Beck
 Helga S. Mann
 Nancy and Philip Margolis
 Geraldine and Sheldon Markel
 Robert and Alice Marks
 Cmdr. and Mrs. Timothy H. Marvin
 Marion Marzolf
 Larry and Rowena Matthews
 Mrs. Lawrence Maugh
 Mr. William J. and Mrs. Jan de Vries
 Maxbauer
 Josephine C. Mazzolini
 David G. McConnell
 Ronald G. and Cathryn S. McCready
 David and Claire McCubrey
 Mr. Ron McCullough
 Mr. and Mrs. Stewart E. McFadden
 Norman E. and Mary McIver
 Mr. and Mrs. W.J. McKeachie
 Mr. Stephen McKenny
 Daniel and Madelyn McMurtrie
 Helen F. Meranda
 Gordon Merna and Sarah Freeman
 Dr. Henry D. Messer and Mr. Carl A.
 House
 Ms. Lisa A. Mets
 Mr. and Mrs. Walter Metzger
 Eva and Alfred Meyer
 Professor and Mrs. Donald Meyer
 Mr. and Mrs. Herbert M. Meyers
 Dr. William P. Mies
 William and Joan Mikkelsen
 Dr. and Mrs. Josef M. Miller
 Rhea E. Miller
 Kristine Miller-Pinti
 Madolia Massey Mills
 William H. Mills, III
 Ms. Doris Milton
 Kittie Berger Morelock
 Mr. and Mrs. James N. Morgan
 Richard A. Morin, M.D.
 Rona and Cyril Moscow
 Mrs. Erwin Muehlig
 Dr. and Mrs. Bernhard Muller

Dr. and Mrs. Gunder A. Myran	Dr. and Mrs. Robert Rapp	Donald E. and Marjorie K. Shelton
Yoshiko Nagamatsu	A.M. Raschbaum	Mmgr. William J. Sherzer
Louis and Julie Nagel	Ethel Rathbun	Patricia Shipman
Rosemarie Nagel	David William Rau	Ned Shure and Jan Onder
Mr. Dennis P. Nagle	Mr. and Mrs. Russell Reed	Dr. Bruce M. Siegan
Ms. Ruth Nagler	Anthony L. Reffells	Dr. and Mrs. Milton Siegel
Mr. and Mrs. Richard Needleman	Caroline Rehberg	Sandy and Dick Simon
Mrs. Elizabeth R. Neidhardt	Walter A. Reichart	Frances and Scott Simonds
Mr. and Mrs. Lyle Nelson	Professor and Mrs. Raymond Reilly	Donald and Susan Sinta
Mr. Wallace E. Newcomb	Jim and Linda Reinhardt	Mr. Stephen Skelley
Don and Virginia Newell	Alice Rhodes	Irma and Robert Sklenar
James A. Kelly and Mariam C. Noland	Mr. and Mrs. G. Robert Richards	Mrs. Beverly N. Slater
Mr. Saul Nosanchuk	Fareed B. and Maria Rifat	Richard and Clara Lee Smith
Dr. and Mrs. Jack Novick	Paul T. and Kathleen Robertson	Richard and Jo Ann Socha
Maury Okun	Alma D. Robinson	Dr. and Mrs. Rodolfo Son
Keith T. Oldham and Karen S. Guice	Mary K. Roeser	Mina Diver Sonda
Bill and Marguerite Oliver	Dr. and Mrs. Leslie W. Rogers	Dr. and Mrs. Robert E. Speer
Dr. Leslie A. Olsen	Minnie and M. Minette Rollins	Bob and Joyce Squires
Mr. and Mrs. J.L. Oncley	John H. Romani	Mary Polasky Stadel
Zibby and Robert Oneal	Harry A. Rommel	Mrs. Alfred F. Staeb
Helen L. Osterlin	Edith and Raymond Rose	Ms. Ann Staiger
Lillian G. Ostrand	Milton and Marlene Rosenbaum	Julie and Charles Steedman
Dr. F.D. Ostrander	William and Elinor Rosenberg	Joanne Stein
Mr. and Mrs. Roland Owens	Mr. and Mrs. Lawrence Rosenthal	Dr. and Mrs. Alan W. Steiss
Mr. and Mrs. James R. Packard	Elva Rosenzweig	Wilma Steketee-Bean
William and Janet Paige	Dr. and Mrs. David W. Roush	William and Georgine Steude
Viola Goin Palmer	Dianne Rubin	M. Virginia Stevenson
Mr. and Mrs. George Palty	Matilda and George Rubin	Ms. Sue Stindt
Mrs. John Panchuk	Ms. Mabel E. Rugen	Mr. James L. Stoddard
John and Julie Panek	John Paul Rutherford	Mr. and Mrs. James Stokoe
Patricia Paris	Theodore and Joan Sachs	Mr. Bernard Stollman
Ronald and Sarah Park	Mr. Chris Sackellares	Mrs. A.F. Strom
Mrs. Virginia B. Passon	Miriam and Fred Samson	Drs. Eugene Su and Christin Carter-Su
Mr. and Mrs. William A. Paton, Jr.	Ina and Terry Sandalow	Selma and Alfred Sussman
Ara and Shirley Paul	John and Reda Santinga	Mr. and Mrs. Earl G. Swain
P.D. Pawelski	Lillian and Ray Sauder	John and Carol Sweinkowski
Anita H. Payne	Gary and Arlene Saxonhouse	Vern and Bonnie Terpstra
Dr. and Mrs. M. Joseph Pearson	Dr. and Mrs. George S. Sayre	Mary H. Thieme
Ruth and James Persons	Jochen and Helga Schacht	Norman and Catherine Thoburn
Mrs. Donald W. Peterson	Mr. and Mrs. Alan Schall	Mr. Gregory Thomas
Mr. and Mrs. Albert F. Petrosky	Virginia Wise and Frederick Schauer	Mr. and Mrs. Robert J. Thomas
Jim and Julie Phelps	Dr. and Mrs. John E. Schenk	Mr. and Mrs. Ned Thomson
Roy and Winnifred Pierce	Suzanne Schluederberg	Mrs. Dolph L. Thorne
Mr. and Mrs. Robert H. Plummer	Mr. and Mrs. Frederick Schmid	Mr. and Mrs. Robert J. Thomas
Martin A. Podolsky	Courtland and Inga Schmidt	Mr. and Mrs. Theodore Thrasher
Mr. Albert M. Pollmar	Lara J. Schmidt	Charles and Peggy Tieman
Mr. and Mrs. Gerald Powrozek	Drs. Robert J. and Franziska I.	Mr. and Mrs. Franz Topol
Bessie A. Preketes	Schoenfeld	Mrs. Richard E. Townsend
Jacob M. Price	Gerald and Sharon Schreiber	Santa and Michael Traugott
John and Nancy Prince	Sue Schroeder	Sarah Trinkaus
Julian and Evelyn Prince	Steven and Elizabeth Schubiner	Robert J. Trombley, Jr.
Marjjean Quigley	Mr. and Mrs. Brett A. Seabury	Marion and Louis Trubshaw
Marshall E. Quinn	Leonard and Sylvia Segel	Paul and Barbara Trudgen
Mrs. Joseph S. Radom	Carol and Erik Serr	James and Julianne Turner
Mrs. Tad Rae	Mr. and Mrs. Laurence Shalit	Andrew T. Turrisi
Alfred and Jacqueline Raphelson	David and Elvera Shappirio	Marilyn and John Twining

Paul and Fredda Unangst
Mr. and Mrs. William L. Upton
Brian A. and Susan R. Urquhart
Jan Valentine
Robert P. and Barbara F. Van Ess
Fred and Carole van Reesema
Mr. Reynold Van-Til
Barbara and Henry Vanderploeg
Linda Vanek
Barbara and James Varani
Chris and Kate Vaughan
Edie and Paul Vegoda
Joseph and Alice Vining
Weston E. Vivian
Carolyn and Jerry Voight
Richard S. Walinski
Patricia Walsh
Joseph C. Walters
Monique and Jon Wardner
Lorraine and Sidney Warschawsky
Alice and Martin Warshaw
Christine Webb
Mrs. Charles F. Weber
Edward C. Weber
Deborah Webster
Ju Lin Wei
Mr. and Mrs. Gerald Weisman
Steven Werns, M.D.
Mr. and Mrs. Scott Westerman
Michael Whitcombe
Ms. Janet F. White
Rebecca S. Whitehouse
Mr. and Mrs. Nathaniel H.
Whiteside, III
Mr. and Mrs. Peter H. Wilcox
William and Cristina Wilcox
Mr. and Mrs. Michael S. Wilhelm
Carroll and Dorothy Williams
John Troy Williams
Raymond C. Williams
Stephen B. and Danette Wineberg
Dr. Grant Judson Withey
Joyce Guior Wolf, M.D.
Dr. and Mrs. Victor K. Wong
Sharon and Leonard Woodcock
Ernst Wuckert
Patricia Wulp
Theophile and Barbara M. Wybrecht
Dr. and Mrs. C.M. Wylie
John G. and Elizabeth F. Young
Mrs. Antonette Zadrozny
Mr. and Mrs. F.L. Zeisler
Mr. and Mrs. George Zissis
Gail and David Zuk

Sustaining Members

Lynn and Richard Adelman
Judith and Ronald Adler
Mike and Suzan Alexander
Mr. and Mrs. Henry Amble
Richard Amdur and Daniela Whittman
Mr. and Mrs. H.K. Anders
Mr. Austin Anderson
Carl and Judy Anderson
Neil P. Anderson
Dr. and Mrs. Lyle Andress
Ted and Ruth Aprill
Mary C. Arbour
Jill B. and Thomas J. Archambeau, M.D.
Mr. and Mrs. Lawrence E. Arnett
Drs. Peter and Margaret Ash
Ronald E. and Anna Marie Austin
Kathy Babcock
Mr. and Mrs. Henry A. Bachofer, Jr.
Drs. John and Lillian Back
Mrs. Reeve Bailey
Mr. and Mrs. James R. Baker, Jr.
Judith Banker and John Saylor
Fleming Barbour
Gail Davis Barnes
Kay and Martin Barrett
Mrs. T. Howe Bartholomew
Alan R. Bass
Margarete Baum
James and Margaret Bean
Mrs. Sara Becker
Mary T. Beckerman
Tamar and Harel Beit-On
Dale and Joan Bell
Leslie Benecki
Ms. Alice R. Bensen
Daniel and Christine Benson
Dr. Rosemary R. Berardi
Esther W. Berger
Mr. and Mrs. Lawrence S. Berlin
Andrew H. Berry, D.O.
Ralph and Mary Beuhler
Don and Sue Bialostosky
Janet and Lloyd Bloom
Mr. and Mrs. Francis X. Blouin, Jr.
Lowell Blumberg
Ms. Sophie Bogdan and Mr. Gary Shrum
Ronald and Mimi Bogdasarian
Jean Magnano and Lee C. Bolinger
Mrs. Wallace J. Bonk
Mr. James B. Bonner
The Rev. Leland and Bertha Booker
Mr. Thomas R. Boothby
Robert and Holde Borcherts
Dr. and Mrs. Morris Bornstein
Mimi and William M. Borowy
Ms. Audrey T. Boseman
Mr. and Mrs. K.L. Bowman
Drs. Laurence and Grace Boxer
Dr. and Mrs. Ralph Bozell
Dr. Phyllis J. Brannan

Dr. Ruth M. Brand
Robert R. Brewster
Mary R. Brooks
William M. and Sandra Broucek
Mr. and Mrs. James L. Brown
Ms. Martha L. Brown
Ruth A. Brown
Mr. and Mrs. Edward W. Browning
Mr. and Mrs. Donald R. Brundage
Mr. and Mrs. James R. Buckley
Kathleen Bugaski
Robert and Carolyn Burack
Elizabeth P. Burnside
Senator and Mrs. Gilbert E. Bursley
Ms. Joan Bush
Thomas E. Butts
Mary C. Caggegi
Bev and Ross Campbell
Mr. and Mrs. F.B. Capalbo
Ms. Isabelle Carduner
Marc and Janet Carlson
Allen W. Carpenter
Josephine D. Casgrain
Ezra and Lucille Cassel
Robert A. Castillo
Jack Cederquist
Steve and Linda Chaikin
Elizabeth Chapleski
Ann Chapman
Richard and Mignonette Cheng
Mr. and Mrs. Ernest H.Y. Chu
Patty Clare
Beth and Charles Clark
Ms. Janice A. Clark
Dr. and Mrs. Charles B. Clayman
Mr. and Mrs. Allen Cleveland
Daniel P. Cohen
Phil Cole
Mrs. Alene Collins
Eleanor S. Collins
Fernando and Lois Cione
Richard and Betty Jane Cooper
Grace M. Cornelius
Diane Cottrell
Henry R. Couke
Mr. and Mrs. George H. Cress
Dr. and Mrs. Orlo L. Crissey
Richard J. Cunningham
Mr. and Mrs. David Cylkowski
Dr. and Mrs. Harold Daitch
Robert M. Dascola
Mrs. Janet E. Davis
Dr. Roger E. Davis
Roy C. and Donna B. Davis
Mia De Sa
Joyce E. Delamarter
Elizabeth Delaney
Ms. India Dennis
Mr. and Mrs. Darko Desaty
Raymond A. Detter
Don and Pam Devine
Norma Diamond

Paul and Constance Dimond
Dr. Jack Distler
Helen M. Dobson
Dorothy K. Donahue
Thomas and Patricia Dooley
Ruth P. Dorr
James L. and Cathie L. Dries
Ms. Dianne Dunchock
Frances E. Dyer
Elsie J. Dyke
Ms. Patricia Eames
Herb and Hildegard Ebell
Ms. Ruth Eckstein
Mr. & Mrs. Ralph E. Edwards
Mr. and Mrs. H. Michael Endres
Lizabeth England
Lawrence J. Ernst
Dr. and Mrs. Paul Y. Ertel
Randy and Gladys Eshenroder
Magdalena Ezoe
Mrs. Susan and George Fee
Mr. and Mrs. John Feikens
Alyssa Fein
Ms. Sheila Feld
Nancy Feldkamp
Mrs. Robert S. Feldman
John and Karen Ferguson
Ms. Yi-tsi M. Feuerwerker
James and Patricia Fienup
Mr. and Mrs. Leland Finkbiner
Ira Fisher and Beth Eisler
John W. and Mary E. Fisher
Winifred Fisher
Jim and Barb Fitzgerald
Patricia Fitzgerald
Linda and Tom Fitzgerald
Mr. and Mrs. George E. Foltz
Joan and Tom Fournier
Tom S. Frank
Selma and Newton L. Freedman
Jane M. Friedman
Howard Frisinger
Eleanor J. Froehlich
Gail Fromes
Lois W. Gage
Jane Galantowicz
Bernard and Enid Galler
Elkan and Zelda Gamzu
Mr. and Mrs. Robert C. Gatzke
Larry and Hilma Geffen
Mark and Sonia Geoffrey
Robert M. and Margorie German
Irwin and Eeta Gershow
Mr. and Mrs. Paul L. Giles
Dr. and Mrs. Gary Gillespie
Beverly Jeanne Giltrow
Dr. and Mrs. F.B. Glaser
Edward and Judith Glass
Dr. and Mrs. Howard S. Goldberg
Edie N. Goldenberg
Anita and Albert Goldstein
Steve and Nancy Goldstein

David and Beryl Goldsweig
Mr. and Mrs. R. Eugene Goodson
Enid M. Gosling
William A. and Jean Gosling
Barbara and Alec Gough
Mr. and Mrs. Gordon J. Graham
Robert and Judy Gray
Elizabeth A.H. Green
Lila and Bob Green
Dr. Robert and Mrs. Eileen Greenberger
Penelope Greilling
Atlee and Margaret Grillot
Mr. and Mrs. Felipe A. Grimard
Dr. and Mrs. Alexander Grinstein
Mr. Henry Morgan Grix
Mrs. Rose Groak
Dr. and Mrs. Milton Gross
Ron and Bea Gross
Lawrence and Esta Grossman
Mrs. Elizabeth S. Groves
Mr. Robert Grunawalt
Leora Grunhaus
Jerfaas A. and Maria A. Haas
Roger and Caroline Hackett
Raymond R. Haggerty
Chaplain and Mrs. Louis Halsey
Mr. and Mrs. Walter F. Hamilton, Jr.
Marjorie H. Hammes
Mr. William Hand
Becky and Fred Hankin
Mrs. Oliver Hanninen
Mr. and Mrs. George W. Harms
Rena Harold
Kathleen Harrigan
Tim and Nancy Harrison
Mr. and Mrs. Paul Harvey
Margaret A. Harwick
Kenneth Hass and Nancy Magnani
Dr. and Mrs. Gregory Hatfield
Mr. and Mrs. E.J. Hayes
Professor Lorna M. Haywood
Kenneth H. Hebenstreit
Ms. Gilda M. Heider
Drs. John Heidke and Cynthia Straub
Kenneth and Jeanne Heininger
James and Esther Heitler
Helen Heitz
Mrs. William Heldreth
William C. Helfer
Merry Carol Hendel
Evva and Michael Hepner
Dr. and Mrs. Ralph Herbert
Dr. and Mrs. Clark Herrington
John and Merrill Herzenberg
Mrs. Emily F. Hicks
Robert and Cathy Hightower
John A. and Patricia A. Hill
Lynn M. Hill
Phyllis H. Hinterman
Sheryl Hirsch and John E. Billi
Chiung-Yao Ho
Mr. and Mrs. Donald E. Hoff
Helen B. Hoff

Mr. and Mrs. James F. Hoffmeyer
Mr. and Mrs. Timothy Hogan
Carol and Dieter Hohnke
Jeanette Holtman
Rose Marie Hooper
Mr. and Mrs. Phillip Horwitz
Dr. Nancy Houk
Kenneth and Carol Hovey
Mrs. B.A. Howarth
Sally Howe
Kenneth Hulsing
Mr. and Mrs. Roger E. Hunt
Ruth J. Husung
Mr. and Mrs. William Ingram
Shelly and Larry Jackier
Richard Jaeger
Marilyn and J. Dale Jeffs
Carole A. Jenkins
James C. and Baiba G. Jensen
Russell Jenter
Kathryn Telfer Johnson
Randall H. Johnson
Dr. and Mrs. James E. Jones
Mr. and Mrs. Phillip S. Jones
Martin C. Josso
Barbara Lynn Joyce
Ms. Mary Kahn
Adrienne Kaplan
Julian M. Kaplin
Ms. Janet Karpus
Adelaide H. Karsian
Franklin and Judith Kasle
Barbara Rosenzweig Kasle
Maxine and David Katz
Mr. and Mrs. Philip Katz
Ms. Elizabeth Kaufman
Marilee Kaufman
Matt and Marti Keefe
Grace E. Kehl
Charles and Jean Kelsey
Ruth and Norman Kemp
Earl W. Kennedy
Horst and Lottie Kesner
Ms. Edna Kilgore
John S. King
Thomas and Constance Kinnear
Joyce Urba and David Kinsella
Dr. and Mrs. Marvin M. Kirsh
Mr. Mark Kiuchi
Peter and Susan Klaas
Ms. Katherine Klykylo
Peter and Margaret Knoess
Mrs. R.J. Knight
Glenn and Shirley Knudsvig
Mr. and Mrs. Dirk F. Kooiman
Alan and Sandra Kortesoja
Daniel and Charlotte Kovats
Lisa A. Kozak
Darlene R. Krato
Edward and Lois Kraynak
Kenneth C. Kreger
Debra M. Kirby and John Krol

Dr. Max J. and Ivah A. Kukler
Hilda Kurtz
Mr. and Mrs. Sol G. Kurtzman
Mr. David C. Kwan
Janet Landsberg
David Langer
Anne-Marie and Anthony La Rocca
Edward W. Lauer
Leo F. and Eileen R. Leary
Dr. and Mrs. Daniel E. Leb
Paul and Ruth Lehman
Dr. Robert M. Leitch
Ms. Lisa Lemble
Dr. and Mrs. Morton B. Lesser
Sheldon and Mary Lois Levy
Yi-Guang and Sophia P. Li
Dr. and Mrs. Richard Lineback
Dr. and Mrs. Francis A. Locke
Bruce and Pat Loughry
Jonathan D. Lowe
Mr. and Mrs. Raymond G. Luce
Donald and Barbara MacCallum
Mary Egan MacDowell
John and Fe A. Maclean
Mr. Arthur Maday, Jr.
Mr. and Mrs. Gregg Magnuson
Suzanne and Jay Mahler
Mr. Michael D. Mainguth
Christina J. Maley
Jack and Betsy Mall
Armena Marderosian and Ronald Suny
Sandra Stukan Marks
Jeanette M. Martel
Dr. and Mrs. William Martel
Robert S. and Margaret R. Martin
Yasuo Maruta
John and Nancy Mason
Matthew J. Mason and Renate Klass
Vincent and Margot Massey
Dr. and Mrs. Fred Maynard
Linda McCall
Kenneth and Martha McClatchey
Ms. Patricia Kaiser McCloud
Dores M. McCree
Paul D. and Susan McEwen
Mr. and Mrs. Ed W.G. McKinley
Mr. and Mrs. Keith S. McMullan
Donald and Elizabeth McNair
Samuel and Alice Meisels
Marquerite L. Melander
Mr. Norman Meluch and Laura Fisher
John and Doris Melvin
Rev. Harold L. Merchant, D.D.
Mr. and Mrs. R. Merlin
Henry J. and Suzanne M. Meyer
Valerie D. Meyer
Mr. Victor L. Meyers
Delores and Gerald Michael
Ms. Florence Miller
Akio Mimori
Mr. and Mrs. Jay H. Mirrow
Professor and Mrs. William Mirsky

Elaine and Karl Mono
Patricia A. Montgomery
Rosalie E. Moore
Helen and Donald Moray
Morrish Elementary School
Mr. and Mrs. Robert Mrozinski
Patricia Runyon and J. Herbert Mueller
Thomas P. Murtha
Reverend Stephen E. Naas
Carroll and Sandra Nadig
Martha Narveson
Morry and Kathy Nathan
Marcella A. Nautsch
Sharon and Chuck Newman
Mr. and Mrs. James K. Newton
Laura Nitzberg
Ms. Catherine Noel
Mr. and Mrs. David Norton
Mr. Majd Nuri Shafiq
Ms. Patricia O'Connor
Mr. Terry P. Oburn
Mrs. Anne Okey
Lois and Michel Oksenberg
Paul L. and Shirley H. Olson
Sherry B. Ortner
Satoshi Oyamada
Marianne E. Page
Ms. Ki-Nam Park
Janet Parkes
Dr. and Mrs. Beverly C. Payne
Mr. and Mrs. Douglas E. Peck
Mr. Gamaliel R. Perez-Santaella
Nancy and Bradford Perkins
Charles C. and Gloria Perry
Patsy C. Peterson
Frank and Nelly Petrock
Dr. Joseph and Sharon Petty
Judge and Mrs. Harry E. Pickering
Jeffery A. Pike
Mary Catherine Pollock
Richard E. Popov
Mr. and Mrs. Clarence L. Pozza, Jr.
Dr. Allen D. and Vivian Price
Ruth S. Putnam
Dr. G. Robina Quale
Mr. and Mrs. S. Rabinovitz
Ms. Elisabeth Radcliff
John D. Radford
Drs. Norman and Norma Radin
Steve and Ellen Ramsburgh
Rhoda Rankin
Maxwell and Marjorie Reade
Carol and Gerald Rees
Carolyn B. Rehms
Rachel Resnick
Constance O. Rinehart
Tom and Junko Roehl
Mary F. Loeffler and Richard K. Rohrer
Drs. Dietrich and MaryAnn Roloff
Mr. and Mrs. Richard Root
Bernard and Barbara Rosen
Drs. Janet and Seymour R. Rosen

Edie W. and Richard Z. Rosenfeld
Charles W. Ross
Mr. Christopher Rothko
Mr. Robert M. Rubin
James and Adrienne Rudolph
Mr. Peter N. Ruma
Mr. and Mrs. Robert Sabol
Dr. Don and Marlene Salberg
Amy Saldinger
Marjorie and William Sandy
Mr. Lewis J. Sappington
Bonnie R. Schafer
Erich S. Schifter
Yizhak Schotten and Katherine Collier
Shirley Schreidell
Mary L. Schuette
Albert and Susan Schultz
Aileen and Earl Schulze
Alice and Heinz Schwarz
Stephen W. Schweer and Christine A. Trautwein
Mrs. Ralph E. Schweitzer
N. David and Joan Scott
Hugh Sebastian
Eithel Partlow Sech
Geraldine Seeback
John and Carole Segall
Mary Ann Sellers
Dr. and Mrs. Earl W. Shaffer
Lorraine and Brahm Shapiro
Eleanor A. Shaw
Kathleen A. Sheehy
Fumio Shinoda
Kyoichi Shirai
Janet E. Shultz
Ray and Marilyn Shuster
Robert and Evelyn Silva
Scott and Joan Singer
Mr. Juergen Skoppek
Dr. and Mrs. J. Bernard Sloan
Mr. and Mrs. David Boyd Smith
Mr. and Mrs. J.E. Keith Smith
Peter Smith and Diane Czuk Smith
Robert L. Smith and Karen Sayer
Judith R. Smutek
Mr. C. Robert Snyder
John and Ellen Soave
Evangeline M. Sparling
Mr. Jeff Spindler
Mr. and Mrs. Gus Stager
Irving M. Stahl
Joann and Ralph Stahman
Mary Decker Staples
Dr. and Mrs. William C. Stebbins
Thomas O. and Jeanne D. Stock
Mrs. Alfred H. Stockard
Mrs. Ruth Stone
Ellen Strand
Mr. and Mrs. Daniel K. Struble
Manfred Stryk
Laura Stuckey
Dr. and Mrs. Samuel Stulberg

Mr. and Mrs. Michael Suliman
Deborah K. Swanberg
Waldo and Betty Sweet
John and Carol Swienckowski
Suzanne Tainter and Ken Boyer
Bradley L. and Simone Himbeault Taylor
Thomas and Leslie Tentler
Toby J. and Juliette S. Teorey
Robert J. and Vicki W. Terry
James and Carol Thiry
Frances Thoma
Dr. Edwin J. Thomas
Bonnie and Bradley M. Thompson
Norman and Marcia Thompson
Mrs. Dolph L. Thorne
George and Helen Timmons
Ms. Susan Topol
James W. Toy
Ms. Roni Tripodi
Roger Samuel Trunsky
Irving and Barbara Tukel
Jeff and Lisa Tulin-Silver
Mr. and Mrs. Warren Turski
Lyle Uhlmann
Barbara and Joseph L. Ullman
Jeffrey and Rachelle Urist
Joaquin and Mei Mei Uy
Mr. and Mrs. Roger Van Bolt
Deborah and Chris VandenBroek
Rebecca W. Van Dyke
Arthur and Florence Vartanian
Mark and Marsha Vartanian
Virginia O. Vass
Leonard L. Veatch
Dr. and Mrs. Aaron Vinik
Vincent A. Vis
Judith R. Voisine
Lynne and Lawrence Waggoner
Michael and Patricia Wagner
Leigh and Robert Waldman
Mr. and Mrs. David C. Walker
Ms. Diana M. Walker
Robert D. Wallin
Nelda L. Wallis
Dr. and Mrs. Julius Wallner
Mr. and Mrs. Alan Walt
Ms. Martha Walter
Mr. and Mrs. Harold A. Ward
Marguerite E. Ward
Dr. and Mrs. Alan Weamer
William and Patricia J. Webb
Joan M. Weber
Richard and Madelon Weber
Dr. and Mrs. Wendell W. Weber
Dr. and Mrs. Myron E. Wegman
Dr. and Mrs. Jerrold Weinberg
Donna G. Weisman
Lisa and Steve Weiss
Mary E. Welch
Mrs. Frances West
Mabel C. Wheeler
Barbara Tate Whipple

Ted and Becky White
Nancy Whitmire
Mr. and Mrs. Leonard A. Wilcox, Jr.
John W. Wiley
Dr. and Mrs. Francis S. Williams
Mr. and Mrs. Ralph G. Williams
Ray and Twyla Williams
Mr. and Mrs. L.R. Windecker
Laurence D. and Mary L. Wise
Dr. and Mrs. John Wiseman
David and Lia Wiss
G. Wollschlaeger, M.D.
Julia Woodbury
Ms. Barbara H. Wooding
Ms. Joy Wooten
Stewart and Carolyn Work
Frances A. Wright
E. Benjamin and Frances E. Wylie
Ms. Hiroko Yamada
Donald and Elizabeth Yenni
David and Sarah Yentz
Frances L. Young
Peter T. and Alike Zachary
Robert and Charlene R. Zand
Miles Zeman
Gary and Joan Zembala
Mr. and Mrs. Paul D. Zenian
Dr. and Mrs. George D. Zuidema

Memorials

Marion L. Beam
John W. Beam
Mrs. Hedy B. Berger
Hope H. Bloomer
Roscoe and Lillian Bonisteel
Dr. Gordon C. Brown
Marion W. Brown
Alice Kelsey Dunn
Hedi Eckstein
Robert S. Feldman
Carl Fischer
Gerald J. Fischer
Florence Fuller
Letitia Garner
Dr. Paul Hogg
George R. Hunsche
Hazel Hill Hunt
Donald Katz
Jean Kennedy
George Michael Landes
Mr. and Mrs. Alfred Lovell
Doris L. Lueke
Frederick C. Matthaei, Sr.
Glenn McGeoch
Vaden W. Miles
Margaret Peterson

Carl and Loretta Pollmar
Sarah Power
Gwen and Emerson Powrie
Dr. Joseph Preston
George S. Quick, Jr.
Steffi Reiss
Percy and Elisabeth Richardson
Dennis Rigan
Jindrich Rohan
Bernard J. Rowan
Dr. Richard C. Schneider
Mrs. Ethel Shanklin
Charles A. Sink
Mrs. Arthur W. Smith
Robert Spicer
Ralph L. Steffek
Mark C. Stevens
Mischa Titiev
Dur Vetter
Ione Wagner

Matching Gift Companies

3M Foundation
ADP Network
Allied-Signal Foundation
American Telephone and Telegraph
Bechtel Eastern Power Corporation
Chrysler Corporation Fund
Consumers Power Company
Cummins Engine Foundation
Dana Corporation Foundation
Detroit Edison Foundation
Detroit News
Dow Chemical
Eli Lilly
Equitable Life Assurance Society
First Bank System Foundation
Federal-Mogul Corporation
Ford Motor Company Fund
Gannett Foundation
General Motors Corporation
Honeywell Foundation
IBM Corporation
Johnson Controls, Inc.
JSJ Corporation
Kellogg Company
Lord and Taylor
Manufacturers Life Insurance Company
Massachusetts Mutual Life Insurance Company
May Stores Foundation, Inc.
Merrill Lynch Pierce Fenner & Smith

Metropolitan Life Foundation
Michigan Bell Telephone Company
Mobil Foundation, Inc.
Northern Telecom
Northwestern Mutual Life
Insurance Company
Paramount Communications
Foundation
Proctor and Gamble Fund
Rohm and Haas Company
UNISYS
Warner-Lambert Company

In-Kind Contributions

Amadeus Restaurant
Benson House Bed and Breakfast
Tom and Mary Steffek Blaske
Brookwood Studio
Natalie and Michael Challis
Cheers! Executive Committee
Don and Betts Chisholm
Martha Cook Residence Hall
Jim and Penny Craig
Curtin and Alf, Luthiers
Deloitte & Touche
Dough Boys Bakery
Kathy Faber
Fine Flowers
Ford Division of Ford Motor
Company
Kenneth Fischer
Woody Geist
Naomi Gottlieb
The Grunyons
Larry Henkel
Interlochen Arts Camp
Katherine's Catering, Inc.
King's Keyboard House
John MacKrell
Charlotte McGeoch
Marilyn Meeker
Ron Miller
Marguerite Oliver
Oxford Conference Center, Scott
Terrill, Mgr.
Sharron Pignanelli
Carolyn Rykus
Howard and Aliza Shevrin
Alice Simsar Gallery
David Smith
The Stearns Collection
Steinway Society
Jackie Stearns

Ed Surovell
University of Michigan Men's Glee
Club
The Advisory Group of the
University Musical Society
Mr. and Mrs. George Wahr Sallade
Pharmaceutical Research Div.,
Warner Lambert Co.
Larry Weis

Business, Corporation and Foundation Support

Bravo

Arts Midwest
Ford Motor Audio Systems
Ford Motor Company Fund
Ford Motor Company
Elizabeth E. Kennedy Fund
Manufacturers National
Michigan Council for the Arts
Pharmaceutical Research Division,
Warner Lambert Company

Concertmasters

Chelsea Milling Company
Great Lakes Bancorp
JP Industries, Inc.
KMS Industries, Inc.
Benard L. Maas Foundation
McKinley Associates, Inc.
Philips Display Components Co.
Regency Travel, Inc.
Society Bank

Leaders

Creditanstalt-Bankverein
Liberty Music Shop
NBD-Ann Arbor, N.A.
The Power Foundation
Spear and Associates Realtors, Inc.
The Edward Surovell Company
Washington Street Station

Guarantors

Canton Community Foundation
First of America-Ann Arbor
Gelman Sciences, Inc.

Jacobson Stores, Inc.
Christopher H. Montagna
Photography
Riverview Lumber and Building
Supply Co., Inc.
Shar Music Products
Ulrich's

Sponsors

Comerica Bank-Ann Arbor
Imtech Printing, Inc.
Mardigian Foundation
Michigan National Bank
The Old German Restaurant
Pepper, Hamilton & Scheetz
Plymouth Community Arts Council
Charles Reinhart Company
Scientific Brake and Equipment
Company
Sneed Foundation, Inc.
TT Sports Management, Inc.

Benefactors

Adistra Corporation
Campus Inn
Edwards Brothers, Inc.
King's Keyboard House

Patrons

Bank One, Ypsilanti
Herbert Barrett Management
General Systems Consulting Group
Johnson, Johnson, and Roy, Inc.
L & S Music
Seva Restaurant and Market
SKR Classical
University Microfilms International

Donors

Ann Arbor Convention & Visitors Bureau

Sustaining Members

Faber Travel!

Encore Gift Levels

Bravo \$10,000 or more
Concertmasters \$5,000 or more
Leaders \$2,000 or more
Guarantors \$1,000 or more
Sponsors \$500 or more
Benefactors \$200 or more
Patrons \$100 or more
Donors \$50 or more
Sustaining Members \$25 or more